

# 2020 Parke Ranch

## Maternal Power Production Sale

**Silent Auction Format**

**Dec. 7th thru 15th, 2020**

**At the Ranch**

**Drummond, Montana**



**90 Head Sell**  
**60 Bulls**  
**30 Bred Heifers**



[parkeranch@gmail.com](mailto:parkeranch@gmail.com)

[www.parkeranch.com](http://www.parkeranch.com)

406-288-3573 or 406-240-4167



# 2020

## Maternal Power Production Sale

### Silent Auction Format

December 7th thru 15th  
At the Ranch - Drummond, Mt

90 Head Sell  
60 Bulls  
30 Bred Heifers



We want to welcome you to our 5th Annual Maternal Power Production Sale. This years sale includes 60 bulls (which are from the top 40% of our male calf crop) and 30 head of commercial bred heifers from our replacement heifers. These cattle are bred with a focus on maternal strength and profit driven traits for the commercial cow/calf operation. Our cow herd is continually sorted and strictly culled on performance, efficiency, fertility, structure, udder quality, disposition, and phenotype. We have been selling seed stock for over 20 years now and are excited about our direction and progress. We are grateful for you taking time to look at our sale offering and feel confident that you will find genetics that can help you move your operation in a positive direction.

The cattle will again be offered in a silent auction format running over a 9 day sale period. We are aware this is a unique sale structure, but feel it is a low pressure and flexible way for you to purchase the genetics that will fit your selection and budget criteria. We continue to receive positive feedback on the sale format from past customers. We are happy to answer any questions you might have regarding the sale procedure. We hope the timing and length of the sale will allow you to come and view the sale offering and cow herd at your convenience. This will allow us to visit about your needs and answer any questions you might have. If you are unable to come to the ranch we will have a video of the individual bulls and the heifer groups available for viewing through a link on our website prior to Dec. 1st.

2020 has certainly been an interesting year full of both old and unexpected new challenges. We are ever more grateful to be living in rural America! What a tremendous blessing to be surrounded by and working with family and good people! Melanie has spent the last year, since graduation, working at World West Sire Services near Billings, Mt. We are excited for her as she will soon be starting a new chapter in her life. She will be marrying Monson Wadsworth the day after the sale and moving to Idaho. Joseph, Aubrey, and Jaycie are now living next door to us which is lots of fun. Joseph is working on the ranch full time and Aubrey is finishing up schooling online. Spencer returned from his mission in April and spent the summer at home working. He has now started college in Rexburg, ID



# Parke Ranch

## **Sale Procedure:**

- \* Cattle will sell in a silent auction format with bidding opening at noon on Monday Dec. 7th, 2020.
- \* Bulls have a starting base price which is listed in the catalog (\$2,500, \$3,000, & \$3,500). Bred Heifers will sell in small groups with a starting base price on a per head basis.
- \* Bidders may place a bid at base price on any lot without a bid or raise the bid by a minimum of \$100 on any bull or \$25 on any heifer lots with a current bid. Bidding will be open until the sale closes on Tuesday Dec. 15th at 2 pm (Mountain Time).
- \* Bids may be placed with Eaf or Joseph via phone, text, email, or in person at any time during the sale period.
- \* Any lots receiving an increasing bid on Tuesday Dec. 15th may have an oral bid off at the sales close. This would involve the last bidder prior to the 15th and any bidders on the 15th. Bid offs will be handled in order of price and as quickly as the contending bidders can be reached after 2 pm.
- \* Any lots without a bid during the 15th are considered sold to the leading bidder when the sale closes at 2 pm on the 15th.
- \* Any lots without a base bid will be available for sale at the base price at the conclusion of the sale on a first come basis.
- \* We would encourage bidding early in the sale period to reduce the number of bid offs and to allow you to move to other lots.
- \* A spreadsheet will be updated frequently with current bids on our website at [www.parkeranch.com](http://www.parkeranch.com) or you may request update notifications if your bidding status changes.

## **Sale Terms and Details:**

- \* Females need to be picked up by the buyers before Dec. 31st.
- \* 1/2 of purchase price is due at sales conclusion with the balance due at delivery.
- \* Bulls will be fed free of charge and at our risk until delivery beginning around March 20th.
- \* Bulls will be delivered free of charge up to 500 miles with any additional mileage at cost.
- \* All bulls are fully guaranteed for the first breeding season for disposition, structural soundness, and fertility.
- \* We will notify you as soon as possible if any bulls are injured in our care or do not pass the semen test. You may select a replacement bull if one is available, future credit, or receive a refund of your initial payment.
- \* Parke Ranch is retaining 1/3 semen interest on all sale bulls and will collect semen before delivery, at our cost, on any we desire to use in our AI program. You have full salvage value.
- \* A volume discount of 5% will be given on any purchase of 5 or more bulls.

## **Bull History & Development:**

- \* Bulls had actual birthweights taken with a scale at birth.
- \* They have been raised without creep. Just milk and grass.
- \* Sale bulls are from the top 40% of our male calves. They were sorted many times based on dam quality, birthweight, disposition, confirmation, performance, and soundness.
- \* Bulls were weaned on October 5th and are being fed free choice long stem mixed hay and 6 lbs of bull challenger pellets.
- \* They will be fed for a 2.8 lbs/day gain to grow them out sufficiently while ensuring their soundness and longevity.
- \* Bulls will be semen tested and vaccinated in March and be ready for turn out when delivered.
- \* Fall vaccinations included: Vision 8, Pyramid 5, Autogenous Type A, Autogenous Respiratory, Multi-Min, and Footrot. Spring vaccinations: Vision 8, Pyramid 5, Reprostar VL5 HB, & Footrot.

## **Catalog Details:**

- \* All double black bulls were DNA tested for coat color and those found to be homozygous black are designated in catalog .
- \* Lot base prices are found in the upper right hand corner.
- \* Dams average on calves birthweights and weaning indexes are listed along with her udder score (the first digit represents her udder suspension and the second digit is teat size, with 9 being the best and 1 the worst).
- \* The listed EPD's are from the American Salers Association.

## **Cattle Inspection:**

- \* Cattle are available for inspection at any time now or during the sale period. If you desire to call ahead we can make accommodations to improve your viewing experience.
- \* Have lunch on us. Plan a little extra time when you come to look at cattle and have a famous Parkers Hamburger on us at the restaurant in Drummond (they are closed Sun. & Mon.).
- \* Exit interstate 90 at Drummond and head south on Hwy #1. After 2.6 miles turn east on Mullan Road and then travel 1.5 miles and our ranch is on the left.

## **Additional Information:**

- \* A video of the individual bulls and heifer groups will be up on our website before Dec. 1st.
- \* We will have updated weights and scrotal measurements on all sale bulls at the start of the sale. These will be available on our website or when you come to view the cattle.

## **New at Parke Ranch:**

- \* We have a few bulls available again this year that are a 3 way cross of Salers X Angus X Simmental. Please see page 21 for more details and a further explanation.

**Eaf's Cell: 406-240-4167**

**Home: 406-288-3573**

**Joseph's Cell: 406-396-0369**

**Email: [parkeranch@gmail.com](mailto:parkeranch@gmail.com)**

**Web page: [www.parkeranch.com](http://www.parkeranch.com)**

**We Believe In.... Will Represent Honestly.... And Stand Behind our Cattle!**



# Reference Sires

**Black**      **SRS El Dorado 4147E**      2/27/17

**Polled**                      **50% Salers**                      **#717808**

SOO Line Motive 9016      HK Kodiak 5R  
TLA Beauty 5R

**SRS Bottom Line 978B**

SRS Juliet 0584R      MAC Lansing 302L  
SRS Juliet 9609F

SRS Zeus 0509Z      SITZ Uncommon  
PRK Miss Montana 503R

**SRS Pony Tail 4147B**

SRS Pony Tail 0778T      S T S Rembrandt 8300R  
SRS Pony Tail 0302N



CED	BW	WW	YW	MWW	Milk	Fat	REA	Marb.	Doc.	Stay.
+14.3	-1.9	+53	+81	+47	+21	-0.03	+0.51	+0.4	+5	+14

**Hom Black**      **SRS Entity 4108E**      2/27/17

**Polled**                      **50% Salers**                      **#717910**

Connealy Consensus      KMK Alliance 6595 I87  
Blinda of Conanga 004

**Connealy Big Time 1251 7743**

Breeta of Conanga 525      Connealy Freight 232  
Britta of Conanga 5527

LYZS Rowdy 28R      JSR Cummings 169  
LYZS Melody 54M

**SRS Columbia 4108B**

SRS Columbia 0530R      MAC Lansing 302L  
SRS Columbia 0324N



CED	BW	WW	YW	MWW	Milk	Fat	REA	Marb.	Doc.	Stay.
+10.2	+0.3	+66	+101	+50	17	-0.03	+0.43	+0.5	+8	+14

**Hom Black**      **MJB Gladiator 305B**      2/2/14

**Polled/SC**                      **50% Salers**                      **#694609**

SRS Xtra 0347X      SRS Uprising 0059U  
SRS Norah 0347N

**SRS Spartacus 0670Z**

SRS Seiko 0670S      SRS Nevada 9378N  
SRS Priceless 0447P

MJB Barbwire 260S      W Power Boss 203P  
MS W Independence

**MJB Barbie 126Z**

MJB Morgiana 102S      Morgans Direction 111 9901  
MJB Puma 103P



CED	BW	WW	YW	MWW	Milk	Fat	REA	Marb.	Doc.	Stay.
+13.6	+1.4	+72	+97	+53	+17	-0.04	+0.72	+0.3	+8	+20

**Hom Black**      **MAC Enduro 43E**      2/4/17

**Hom. Polled**                      **50% Salers**                      **#720903**

Connealy Consensus 7229      Connealy Consensus  
Blue Lilly of Conanga 16

**Connealy Comrade 1385**

Happy Gee of Conanga      G A R New Design 5050  
HAP Gina of Conanga 260

S Nebraska 330N      D Limited Edition 179L  
S Black Lady 50K

**MAC Carina 176C**

MAC Willow 134W      MAC Lennox 314L  
MAC Kesia 322K

CED	BW	WW	YW	MWW	Milk	Fat	REA	Marb.	Doc.	Stay.
+16.9	-1.3	+62	+97	+54	+23	-0.03	+0.55	+0.6	+12	+16

**Hom Black**      **GGT Final Choice 119B**      1/7/14

**Hom. Polled**                      **62.5% Salers**                      **#695914**

GGT P Heavy Duty 100J      GGT P BLK Design 51D  
GGT MS P BLK Dusty 105E

**GGT P BLK Heavy Hitter**

GGT P Harrah 195K      MAC Gunsmoke 118G  
GGT Jewel 285S

S A V Final Answer 0035      SITZ Traveler 8180  
S A V Emulous 8145

**GGT MS Finality 139Y**

GGT Designer 222W      GRNO New Design 260P  
GGT P Charisma 315K

CED	BW	WW	YW	MWW	Milk	Fat	REA	Marb.	Doc.	Stay.
+16.4	-4.7	+69	+92	+48	+13	-0.07	+0.62	+0.3	+14	+19

# Reference Sires

**Black**                      **PRK Flint 198F**                      **3/15/18**

**Polled**                      **50% Salers**                      **#724634**

SOO Line Motive 9016                      HF Kidiak 5R  
TLA Beauty 5R

**SRS Bullseye 592B**

SRS Juliet 0584R                      MAC Lansing 302L  
SRS Juliet 9609F

SRS Wanted 0218W                      SAV 004 Density 4336  
SRS Juliet 0218M

**PRK Virginia 198Y**

PRK Virginia 898U                      SRS Nokia 9722N  
PRK Virginia 298M



CED	BW	WW	YW	MWW	Milk	Fat	REA	Marb.	Doc.	Stay.
+15.3	-3.0	+48	+64	+39	+15	-0.04	+0.49	+0.3	+22	+12

**Hom Black**                      **MAC Earthquake 158E**                      **2/21/17**

**Hom Polled**                      **PB Salers**                      **#720946**

That's Zepplin 134Z                      JCGC Wide Load 1948W  
JCGC Utterly Gorgeous

**MAC Centennial 167C**

MAC Wynne 258W                      MAC Navigator 281N  
MAC Swan 161S

WHR Wyo Diamond                      JCG Diamond  
TSB PLD Tess 111T

**MAC Zinnia 207Z**

MAC Von 383X                      MAC Thunder 15T  
MAC Taffie 349T



CED	BW	WW	YW	MWW	Milk	Fat	REA	Marb.	Doc.	Stay.
+10.3	+2.8	+67	+90	+54	+20	-0.11	+0.75	+0.3	0	+16

**Red**                      **PRK Fenway 384F**                      **2/25/18**

**Polled**                      **50% Salers**                      **#724583**

C-Bar Evolution 107Y                      TR Colt 45 UT806  
LGS Abby 689S

**DJF Border Line 815A**

STCY Unity 815U                      S Nebraska 330N  
STCY Natalie 315N

SRS WDA 270W                      S A V 004 Density 4336  
SRS Footloose 9927J

**PRK Lass 384A**

PRK Lass 184Y                      SRS United 0653U  
PRK Lass 864U



CED	BW	WW	YW	MWW	Milk	Fat	REA	Marb.	Doc.	Stay.
+13.5	+0.5	+63	+100	+48	+17	-0.03	+0.51	+0.4	+19	+10

**Hom Black**                      **SRS Forward 0984F**                      **2/1/18**

**Polled**                      **50% Salers**                      **#725573**

SRS Bullseye 592B                      SOO Line Motive 9016  
SRS Juliet 0584R

**SRS Dialed In 3160D**

SRS Suzette 3160                      SRS Uprising 0059U  
SRS Suzette 0675S

SRS Recruit 0122R                      BT Right Time 24J  
SRS Aura 0122L

**SRS Seiko 0984W**

SRS Seiko 0670S                      SRS Nevada 9378N  
SRS Priceless 0447P

CED	BW	WW	YW	MWW	Milk	Fat	REA	Marb.	Doc.	Stay.
+12.8	-3.1	+56	+78	+50	+22	-0.04	+0.62	+0.3	+14	+16

**Hom Black**                      **PRK Fullback 280F**                      **3/2/18**

**Polled**                      **50% Salers**                      **#724622**

MAC Quarterback 58Y                      MAC F1 Sundance 4S  
WJM Wilma 120W

**MJB Elway 322C**

MJB Yellow Rose 156Z                      TSB Tulsa 82W  
Mis 92F Masterpiece

SRS Xpert 0881X                      SRS Patent 0221P  
SRS Priceless 0881U

**PRK Rosebud 280Z**

PRK Rosebud 070X                      PRK Tonka 298T  
PRK Rosebud 870U

CED	BW	WW	YW	MWW	Milk	Fat	REA	Marb.	Doc.	Stay.
+10.9	+0.8	+72	+101	+54	+18	-0.05	+0.60	+0.4	+21	+17

## Reference Sires

Hom Black      **Hook's Eagle 6E**      1/22/17  
 Hom Polled      75% Simm      25% AN      #730666

Hook's Xavier 14x  
 Hook's Black Hawk 50B  
 Hook's Yvette 100Y  
 GW-WBF Substance 820Y  
 Hook's Crystal 1C  
 Hook's Underestimated 6U



CED	BW	WW	YW	MWW	Milk	Fat	REA	Marb.	Doc.	Stay.
+15.0	-1.8	+104	+166	+72	+20	-0.07	+1.19	+0.5	+20	+16

Hom Black      **S D S Graduate 006X**      2/4/10  
 Hom Polled      62.5% Simm      37.5% AN      #737322

Nichols Legacy G151      Nichols BLK Destiny D12  
 Nichols Debra D81  
 Hook's Shear Force 38K  
 C&D Tracy      Circle S Leachman 600U  
 Betsy  
 ALC Big Eye D09N      CA Future Direction 5321  
 ALC Hazel L12L  
 S D S Queen 814U  
 S D S Queen 443P



CED	BW	WW	YW	MWW	Milk	Fat	REA	Marb.	Doc.	Stay.
+16.8	-3.8	+77	+117	+63	+25	-0.07	+1.11	-0.1	+12	+20

### **EPD's - Expected Progeny Differences**

Over the past couple of decades EPD's have become a leading industry tool for comparing performance, maternal, and carcass traits of different animals within a breed. They have continued to become more accurate at predicting the level of anticipated performance of an animals offspring. This allows producers to select animals that will maintain or help make progress towards breeding program goals. This past year the Salers Association became part of International Genetics Solutions (IGS). IGS is a multi-breed genetic evaluation that is the world's largest beef cattle database with nearly 20 million animals. It is made up of 17 different breed associations in the USA or Canada. This provides more accurate EPD's, the ability to incorporate genomic DNA, and the ability to directly compare individual animals from the different breeds involved in IGS (Salers, Simmental, Red Angus, Gelbvieh, Limousin, South Devon, Shorthorn, and Chianina). With the movement to IGS there are some adjustments needed in comparing this years EPD's to past years. Below is a chart showing where the main list sires averages were in 2019 compared to the new 2020 EPD's.

Main List Sires	CED	BW	WW	YW	MWW	Milk	Marb	REA	Doc	Stay
2019 EPD's	+0.3	+1.6	+42.7	+80	+41.5	+20.2	-0.4	+0.08	+9.8	+23.9
2020 IGS EPD's	+12.2	+0.2	+53	+75	+42.5	+16	0.0	+0.61	+8	+15

For example if in past years you were looking for bulls with EPD's under +2.0 BW that will now correlate to +0.6. If desired WW was over +40 it would now be +50.3. If you were looking for Milk above +15 you would now want over +10.8. Please ask if you have any questions as we recalculate our targets. Note that all bulls in the sale, no matter their breed make up, have directly comparable EPD's.

# Optimizers

## 466H PRK Homestead 466H \$3500

Hom Black		Polled		50.0% SA		#738200	
Born	Adj BW	205 Wt	Index	11/12 Wt	WDA	Frame	
3/8/20	86 lbs	741 lbs	105	880 bs	3.53 lbs	5.6	

SRS Bottom Line 978B	SOO Line Motive 9016	<b>Dam's Production</b>
SRS El Dorado 4147E	SRS Juliet 0584R	BW 5 @ 82
SRS Pony Tail 4147B	SRS Zeus 0509Z	WW 5 @ 99
	SRS Pony Tail 0778T	Udder 77
SRS Zeus 0509Z	Sitz Uncommon	
PRK Lady 466B	PRK Miss Montana 503R	
PRK Lady 466P	SRS Marksman 0059M	
	PRK Lady 146L	

CED	BW	WW	YW	MWW	Milk	Marb.	REA	Doc.	Stay.
+14.0	-2.3	+50	+71	+46	+21	+0.4	+0.41	0	+15

\* **Potential Heifer Bull** - Quad Polled  
 \* A balanced, attractive made, complete bull, whose dam would suggest he could be used affectively on heifers.  
 \* This bull comes from a cow family that has demonstrated great longevity in our cow herd.



## 499H PRK Hinze 499H \$3500

Black		Polled		50.0% SA		#738201	
Born	Adj BW	205 Wt	Index	11/12 Wt	WDA	Frame	
3/4/20	100 lbs	799 lbs	113	956 lbs	3.78 lbs	6.7	

SRS Bottom Line 978B	SOO Line Motive 9016	<b>Dam's Production</b>
SRS El Dorado 4147E	SRS Juliet 0584R	BW 5 @ 88
SRS Pony Tail 4147B	SRS Zeus 0509Z	WW 5 @ 107
	SRS Pony Tail 0778T	Udder 99
SRS United 0653U	SRS Saint 0218S	
PRK Kit 499B	SRS Starr 0653S	
PRK Kit 999W	SRS Marksman 0059M	
	PRK Kit 245M	

CED	BW	WW	YW	MWW	Milk	Marb.	REA	Doc.	Stay.
+14.2	-1.1	+54	+80	+50	+23	+0.4	+0.46	+15	+17

\* **Quad Polled**  
 \* This is a powerful bull with a lot of eye appeal, and is tied for second highest WDA in the optimizer bulls.  
 \* The dam is a deep bodied high performance female, whose three daughters have all been retained as replacements.



## 899H PRK Hero 899H \$3500

Black		Polled		50.0% SA		#738204	
Born	Adj BW	205 Wt	Index	11/12 Wt	WDA	Frame	
2/18/20	88 lbs	768 lbs	108	914 lbs	3.41 lbs	6.3	

SRS Bottom Line 978B	SOO Line Motive 9016	<b>Dam's Production</b>
SRS El Dorado 4147E	SRS Juliet 0584R	BW 1 @ 88
SRS Pony Tail 4147B	SRS Zeus 0509Z	WW 1 @ 108
	SRS Pony Tail 0778T	Udder 88
DJF Border Line 815A	C-Bar Evolution 107Y	
PRK Kit 899F	STCY Unity 815U	
PRK Kit 599C	SRS Zeus 0509Z	
	PRK Kit 999W	

CED	BW	WW	YW	MWW	Milk	Marb.	REA	Doc.	Stay.
+14.6	-1.8	+57	+86	+50	+21	+0.4	+0.48	+12	+11

\* **Quad Polled**  
 \* Hero has been catching our eye since a young calf. He has great length and thickness out of an impressive young cow.  
 \* This bulls dam is a long bodied, deep made, young female from a great cow family in our herd that has several bulls in this sale.



# Optimizers

**372H**

## PRK Hunk 372H

**\$3500**

Hom Black		Polled		50.0% SA		#738205	
Born	Adj BW	205 Wt	Index	11/12 Wt	WDA	Frame	
2/26/20	81 lbs	728 lbs	103	906 lbs	3.48 lbs	5.8	

Connealy Big Time <b>SRS Entity 4108E</b> SRS Columbia 4108B SRS United 0653U <b>PRK Susannah 372A</b> PRK Susannah 172Y	Connealy Consensus Breeta of Conanga 525 LYZS Rowdy 28R SRS Columbia 0530R SRS Saint 0218M SRS Starr 0653S SRS Unreal 0151U PRK Susannah 887U	<b>Dam's Production</b> BW 6 @ 81 WW 5 @ 98 Udder 78
---	--	---

CED	BW	WW	YW	MWW	Milk	Marb.	REA	Doc.	Stay.
+14.5	-1.7	+57	+83	+46	+18	+0.4	+0.39	+12	+17

- \* **Potential Heifer Bull** - Quad Polled
- \* This bull is a light birthweight calf, that still possesses good thickness, dimension and performance in a very stylish package.
- \* Hunk has the look of a herd sire and is backed by 3 Gold Dams in his pedigree.
- \* The dam is good milking, deep bodied and thick made.



**372H**

**480H**

## PRK Haymaker 480H

**\$3500**

Hom Black		Scurred		50.0% SA		#738206	
Born	Adj BW	205 Wt	Index	11/12 Wt	WDA	Frame	
2/27/20	100 lbs	759 lbs	107	972 lbs	3.75 lbs	6.3	

SRS Entity 4108E SRS Columbia 4108B SRS Spartacus 0670Z <b>PRK Rosebud 480B</b> PRK Rosebud 280Z	Connealy Consensus Breeta of Conanga 525 LYZS Rowdy 28R SRS Columbia 0530R SRS Xtra 0347X SRS Seiko 0670S SRS Xpert 0881X PRK Rosebud 070X	<b>Dam's Production</b> BW 5 @ 93 WW 5 @ 102 Udder 89
--	---	--

CED	BW	WW	YW	MWW	Milk	Marb.	REA	Doc.	Stay.
+12.9	-0.1	+63	+93	+51	+19	+0.4	+0.43	+13	+19

- \* Quad Polled
- \* Powerful, deep made bull, with the fourth highest WDA among the optimizer bulls.
- \* His dam is a heavy milking, good uddered, long made, balanced female. She has had 2 top bulls in previous sales.
- \* She is also a maternal sister to PRK Fullback.



**480H**

**081H**

## PRK Houston 081H

**\$3500**

Black		Polled		50.0% SA		#737446	
Born	Adj BW	205 Wt	Index	11/12 Wt	WDA	Frame	
3/18/20	95 lbs	745 lbs	105	876 lbs	3.67 lbs	6.3	

MAC F1 Enduro 43E MAC Carina 176C SRS Unreal 0151U <b>PRK Gina 081X</b> PRK Gina 9713G	Connealy Comrade 1385 Connealy Consensus 7229 Happy Gee of Conanga 919 S Nebraska 330N MAC Willow 134W SRS Marksman 0059M SRS Lynn 0151L SRS Outlook 9329E 9551 AN Dam	<b>Dam's Production</b> BW 9 @ 89 WW 9 @ 103 Udder 78
--	--	--

CED	BW	WW	YW	MWW	Milk	Marb.	REA	Doc.	Stay.
+14.5	-0.7	+54	+77	+50	+23	+0.5	+0.47	+9	+16

- \* Quad Polled
- \* A young, solid made and attractive bull, with good performance
- \* His dam is a well proven top cow in our herd. She is a moderate framed, good milking, and consistent female.



# Optimizers

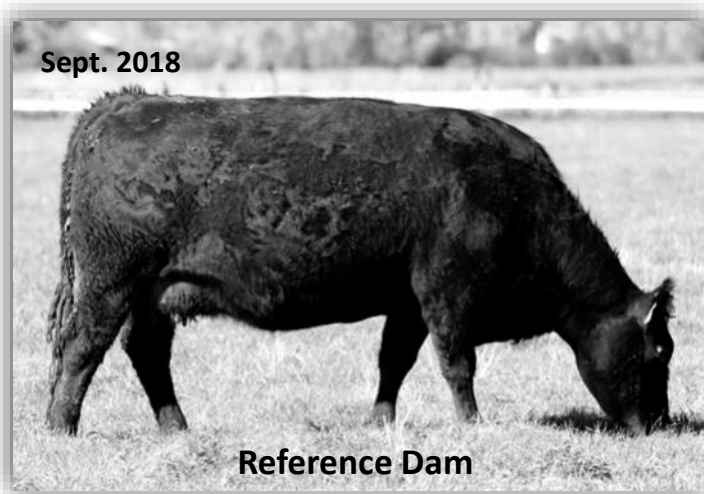
## 384H PRK Heritage 384H \$3000

Black		Polled		50.0% SA		#737450	
Born	Adj BW	205 Wt	Index	11/12 Wt	WDA	Frame	
3/22/20	93 lbs	766 lbs	108	866 lbs	3.69 lbs	6.1	

Connealy Comrade 1385	Connnealy Consensus 7229	<b>Dam's Production</b>
MAC F1 Enduro 43E	Happy Gee of Conanga 919	BW 6 @ 91
MAC Carina 176C	S Nebraska 330N	WW 6 @ 105
	MAC Willow 134W	Udder 99
SRS WDA 270W	SAV 004 Density 4336	
PRK Lass 384A	SRS Footloose 9927J	
PRK Lass 184Y	SRS United 0653U	
	PRK Lass 864U	

CED	BW	WW	YW	MWW	Milk	Marb.	REA	Doc.	Stay.
+14.9	0.0	+62	+94	+50	+19	+0.5	+0.54	+13	+17

- \* Quad Polled
- \* A young calf with good performance and super length.
- \* His dam is a Gold Dam, with ideal body type, great milk and a perfect udder. Her pervious two bulls were top sellers, and her son PRK Fenway has several AI sons in the sale.



Reference Dam

PRK Lass 384A

## 657H PRK Hookshot 657H \$3000

Hom Black		Polled		50.0% SA		#737454	
Born	Adj BW	205 Wt	Index	11/12 Wt	WDA	Frame	
3/5/20	85 lbs	695 lbs	98	888 lbs	3.52 lbs	5.5	

Connealy Comrade 1385	Connnealy Consensus 7229	<b>Dam's Production</b>
MAC F1 Enduro 43E	Happy Gee of Conanga 919	BW 3 @ 83
MAC Carina 176C	S Nebraska 330N	WW 3 @ 95
	MAC Willow 134W	Udder 99
SRS Bullseye 592B	SOO Line Motive 9016	
PRK Gina 657D	SRS Juliet 0584R	
PRK Gina 857U	JBS Lancelot JR 81L	
	PRK Gina 9713G	

CED	BW	WW	YW	MWW	Milk	Marb.	REA	Doc.	Stay.
+13.6	-1.4	+54	+80	+46	+19	+0.5	+0.55	+15	+14

- \* Quad Polled
- \* He is a long bodied bull with a thick quarter and a wide top.
- \* His dam is a moderate, very feminine female, with a great udder structure.

## 729H PRK Harvester 729H \$3500

Black		Polled		62.5% SA		#737456	
Born	Adj BW	205 Wt	Index	11/12 Wt	WDA	Frame	
3/5/20	103 lbs	726 lbs	102	878 lbs	3.48 lbs	5.6	

Connealy Comrade 1385	Connnealy Consensus 7229	<b>Dam's Production</b>
MAC F1 Enduro 43E	Happy Gee of Conanga 919	BW 2 @ 91
MAC Carina 176C	S Nebraska 330N	WW 2 @ 100
	MAC Willow 134W	Udder 88
DJF Border Line 815A	C-Bar Evolution 107Y	
PRK Hannah 729E	STCY Unity 815U	
PRK Hannah 419B	SRS United 0653U	
	PRK Hannah 219Z	

CED	BW	WW	YW	MWW	Milk	Marb.	REA	Doc.	Stay.
+12.0	+1.9	+66	+102	+53	+20	+0.5	+0.57	+23	+14

- \* Quad Polled
- \* This is a moderate framed, thick made and long bodied bull with a very attractive profile.
- \* His dam is a very balanced, attractive, high quality young cow. A maternal sister to PRK Hollywood 419H in the sale.

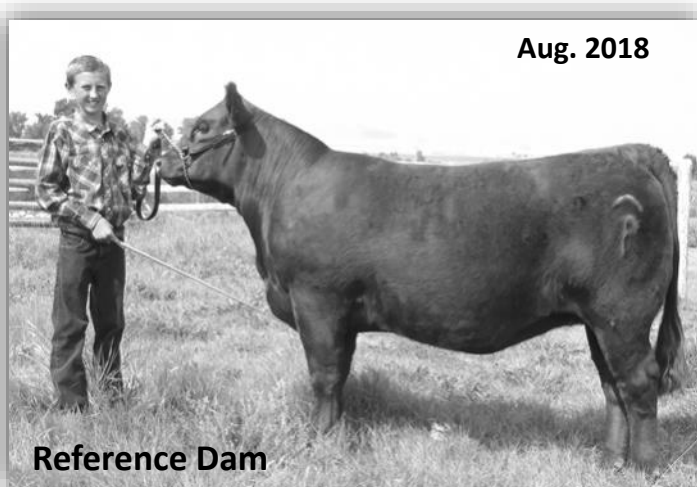
## 763H PRK Hank 763H \$2500

Hom Black		Polled		50.0% SA		#737458	
Born	Adj BW	205 Wt	Index	11/12 Wt	WDA	Frame	
2/28/20	80 lbs	679 lbs	96	818 lbs	3.17 lbs	5.3	

Connealy Comrade 1385	Connnealy Consensus 7229	<b>Dam's Production</b>
MAC F1 Enduro 43E	Happy Gee of Conanga 919	BW 2 @ 84
MAC Carina 176C	S Nebraska 330N	WW 2 @ 94
	MAC Willow 134W	Udder 99
MJB Elway 322C	MAC Quarterback 58Y	
PRK Pigeon 763E	MJB Yellow Rose 156Z	
PRK Pigeon 593C	SRS Spartacus 0670Z	
	PRK Pigeon 393A	

CED	BW	WW	YW	MWW	Milk	Marb.	REA	Doc.	Stay.
+15.9	-1.7	+58	+85	+46	+18	+0.6	+0.52	+14	+17

- \* Potential Heifer Bull- Quad Polled
- \* His dam is a good uddered young cow.
- \* Enduro is a bull we purchased with MJB Salers from Mac-Donalds in their 2018 sale. His first calves have good depth and length with an average 103 weaning index.



Reference Dam

PRK Hannah 729E - As a Bred Heifer

# Optimizers

**766H**

## PRK Hefty 766H

**\$3000**

Black		Polled		50.0% SA		#737460	
Born	Adj BW	205 Wt	Index	11/12 Wt	WDA	Frame	
3/15/20	97 lbs	738 lbs	104	852 lbs	3.52 lbs	5.7	

Connealy Comrade 1385	Connnealy Consensus 7229	<b>Dam's Production</b>
<b>MAC F1 Enduro 43E</b>	Happy Gee of Conanga 919	<b>BW</b> 2 @ 86
MAC Carina 176C	S Nebraska 330N	<b>WW</b> 2 @ 103
MJB Elway 322C	MAC Willow 134W	<b>Udder</b> 99
<b>PRK Lady 766E</b>	MAC Quarterback 58Y	
PRK Lady 466P	MJB Yellow Rose 156Z	
	SRS Marksman 0059M	
	PRK Lady 146L	

CED	BW	WW	YW	MWW	Milk	Marb.	REA	Doc.	Stay.
+12.9	-0.1	+59	+85	+50	+21	+0.5	+0.49	+14	+16

- \* Quad Polled
- \* A moderate, square made, thick ended bull.
- \* His dam is a good young female, and is the maternal sister to the dam of 466H.

Sept. 2020



**287H**

## PRK Heavy Duty 287H

**\$3500**

Hom Black		Polled		50.0% SA		#737480	
Born	Adj BW	205 Wt	Index	11/12 Wt	WDA	Frame	
3/6/20	102 lbs	803 lbs	113	978 lbs	3.90 lbs	6.0	

MJB Elway 322C	MAC Quarterback 58Y	<b>Dam's Production</b>
<b>PRK Fullback 280F</b>	MJB Yellow Rose 156Z	<b>BW</b> 7 @ 89
PRK Rosebud 280Z	SRS Xpert 0881X	<b>WW</b> 6 @ 106
SRS WDA 270W	PRK Rosebud 070X	<b>Udder</b> 79
<b>PRK Gina 287Z</b>	SAV 004 Density 4336	
PRK Gina 087X	SRS Footloose 9927J	
	SRS Uprising 0059U	
	PRK Gina 857U	

CED	BW	WW	YW	MWW	Milk	Marb.	REA	Doc.	Stay.
+10.1	+1.2	+71	+103	+53	+17	+0.4	+0.64	+18	+18

- \* Quad Polled
- \* This is a bull that is loaded with performance and has the highest WDA among the optimizer bulls. He has tons of power with lots of muscle, a thick top and great length.
- \* His dam is a good dispositioned, moderate framed, deep and thick bodied female. She is a heavy milking female with great teat size. All of her calves have been keepers, with her only other bull being a top seller in our 2017 bull sale.

**389H**

## PRK Headway 389H

**\$2500**

Black		Polled		50.0% SA		#737481	
Born	Adj BW	205 Wt	Index	11/12 Wt	WDA	Frame	
3/4/20	97 lbs	705 lbs	99	882 lbs	3.49 lbs	5.8	

MJB Elway 322C	MAC Quarterback 58Y	<b>Dam's Production</b>
<b>PRK Fullback 280F</b>	MJB Yellow Rose 156Z	<b>BW</b> 6 @ 82
PRK Rosebud 280Z	SRS Xpert 0881X	<b>WW</b> 6 @ 100
PRK Yellowstone 966Y	PRK Rosebud 070X	<b>Udder</b> 87
<b>PRK Lori 389A</b>	SRS Uprising 0059	
PRK Lori 789T	PRK Recipe 966W	
	SRS Recruit 0122R	
	PRK Lori 542R	

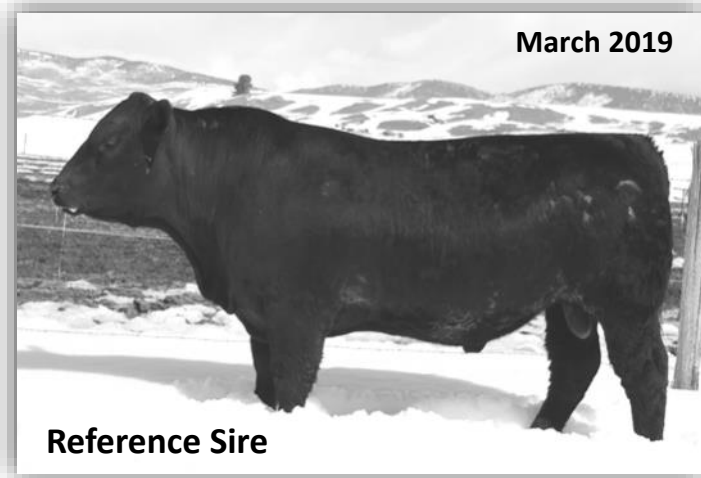
CED	BW	WW	YW	MWW	Milk	Marb.	REA	Doc.	Stay.
+11.8	+0.6	+62	+90	+49	+18	+0.4	+0.59	+18	+17

- \* Quad Polled
- \* A long spined bull with lots of muscle dimension. He has 3 Gold Dams in his pedigree.
- \* His dam is a good milking, deep bodied female.

Sept. 2020



# Optimizers



Reference Sire

## PRK Fullback 280F - As a Yearling

### 853H PRK Holster 853H \$3500

Black		Polled		50.0% SA		#737487	
Born	Adj BW	205 Wt	Index	11/12 Wt	WDA	Frame	
2/22/20	91 lbs	767 lbs	108	916 lbs	3.47 lbs	5.8	

MJB Elway 322C <b>PRK Fullback 280F</b> PRK Rosebud 280Z	MAC Quarterback 58Y MJB Yellow Rose 156Z SRS Xpert 0881X PRK Rosebud 070X	<b>Dam's Production</b> BW 1 @ 91 WW 1 @ 108 Udder 99
SRS Duracell 252D <b>PRK Ginger 853F</b> PRK Ginger 653D	DJF Border Line 815A PRK Robbie 252Z SRS Ariat 270A PRK Ginger 333A	

CED	BW	WW	YW	MWW	Milk	Marb.	REA	Doc.	Stay.
+13.8	-0.1	+66	+98	+52	+19	+0.4	+0.56	+18	+14

- \* Quad Polled
- \* He is an easy going bull with lots of length and a thick top.
- \* His dam is an extremely well made young female with good milk and an excellent disposition.

### 461H PRK Headstart 461H \$3500

Hom Black		Polled		50.0% SA		#738216	
Born	Adj BW	205 Wt	Index	11/12 Wt	WDA	Frame	
3/6/20	91 lbs	721 lbs	102	870 lbs	3.47 lbs	5.7	

Connealy Greeley <b>SRS Dundee 270D</b> SRS Finicky 0838U	Connealy Confidence 0100 Precious of Conanga 0484 Cro Survey 615S SRS Finicky 9809H	<b>Dam's Production</b> BW 4 @ 79 WW 4 @ 98 Udder 77
SRS United 0653U <b>PRK Rhonda 461B</b> PRK Rhonda 541R	SRS Saint 0218S SRS Starr 0653S SRS Nokia 9722N PRK Nancy 347N	

CED	BW	WW	YW	MWW	Milk	Marb.	REA	Doc.	Stay.
+13.7	+0.8	+55	+78	+47	+20	+0.4	+0.51	+3	+17

- \* Quad Polled
- \* This is a thick made, deep bodied bull. He has four Gold Dams in his pedigree and a dam who milks well.
- \* SRS Dundee has consistently sired calves with tremendous depth and thickness.

### 456H PRK Helix 456H \$3000

Hom Black		Polled		50.0% SA		#737483	
Born	Adj BW	205 Wt	Index	11/12 Wt	WDA	Frame	
3/4/20	85 lbs	699 lbs	99	838 lbs	3.31 lbs	5.9	

MJB Elway 322C <b>PRK Fullback 280F</b> PRK Rosebud 280Z	MAC Quarterback 58Y MJB Yellow Rose 156Z SRS Xpert 0881X PRK Rosebud 070X	<b>Dam's Production</b> BW 5 @ 81 WW 5 @ 101 Udder 88
MAC F1 Humboldt 312Z <b>PRK 456B</b> PRK 266Z	Werner War Party 2417 MAC BLK Melody 243M SRS Xtra 0347X PRK Savanna 646S	

CED	BW	WW	YW	MWW	Milk	Marb.	REA	Doc.	Stay.
+13.3	-0.9	+60	+84	+49	+19	+0.4	+0.56	+16	+16

- \* This is a wide topped, long bodied bull.
- \* His dam is an excellent dispositioned, good milking female with a very good udder.
- \* Fullback was the top selling bull in our 2018 sale to Bruce Thurgood. His first calves are very long and wide topped.

### 272H PRK Herdsman 272H \$3500

Hom Black		Polled		50.0% SA		#737432	
Born	Adj BW	205 Wt	Index	11/12 Wt	WDA	Frame	
3/25/20	93 lbs	783 lbs	111	884 lbs	3.81 lbs	6.2	

Connealy Greeley <b>SRS Dundee 270D</b> SRS Finicky 0838U	Connealy Confidence 0100 Precious of Conanga 0484 Cro Survey 615S SRS Finicky 9809H	<b>Dam's Production</b> BW 7 @ 90 WW 6 @ 104 Udder 88
SRS Xtra 0347X <b>PRK Unity 272Z</b> PRK Unity 892U	SRS Uprising 0059U SRS Norah 0347N SRS Nokia 9722N 9792 SA/AN	

CED	BW	WW	YW	MWW	Milk	Marb.	REA	Doc.	Stay.
+11.5	+1.8	+63	+88	+52	+21	+0.4	+0.58	-2	+13

- \* Quad Polled
- \* This is a younger calf with tremendous performance. He has the second highest WDA for the optimizer bulls. He is a balanced and thick made bull.
- \* His dam is a proven, consistent performing cow with great length and thickness. She is also a good milking female who has a nice udder.



461H



# Optimizers

070H

**PRK Hogan 070H \$3000**

Hom Black		Scurred		62.5% SA		#737489
Born	Adj BW	205 Wt	Index	11/12 Wt	WDA	Frame
2/29/20	85 lbs	752 lbs	106	878 lbs	3.42 lbs	6.0

GGT P BLK Heavy Hitter <b>GGT Final Choice 119B</b> GGT MS Finality 139Y	GGT P Heavy Duty 100J GGT P Harrah 195K SAV Final Answer 0035 GGT Designer 222W	<b>Dam's Production</b> BW 10 @ 89 WW 9 @ 106 Udder 67
PRK Tonka 298T <b>PRK Rosebud 070X</b> PRK Rosebud 870U	SRS Nokia 9722N PRK Virginia 298M SRS Marksman 0059 PRK Rosebud 570R	

CED	BW	WW	YW	MWW	Milk	Marb.	REA	Doc.	Stay.
+13.3	-1.9	+67	+94	+54	+20	+0.3	+0.51	+25	+18

- \* Triple Polled
- \* He is an easy going bull with good weaning performance.
- \* His dam is a deep bodied, heavy milking female with a great personality. Nine of her offspring are in this years bull sale.

428H

**PRK Hitchcock 428H \$3000**

Black		Polled		62.5% SA		#737556
Born	Adj BW	205 Wt	Index	11/12 Wt	WDA	Frame
3/2/20	94 lbs	767 lbs	108	940 lbs	3.69 lbs	6.2

GGT P BLK Heavy Hitter <b>GGT Final Choice 119B</b> GGT MS Finality 139Y	GGT P Heavy Duty 100J GGT P Harrah 195K SAV Final Answer 0035 GGT Designer 222W	<b>Dam's Production</b> BW 5 @ 93 WW 5 @ 109 Udder 87
SRS Zeus 0509Z <b>PRK Bonnie 428B</b> PRK Molly 828U	SITZ Uncommon PRK Miss Montana 503R DJF Rolen 5002R PRK Molly 254M	

CED	BW	WW	YW	MWW	Milk	Marb.	REA	Doc.	Stay.
+12.0	-0.4	+70	+98	+52	+17	+0.4	+0.61	+13	+18

- \* Quad Polled
- \* He is a big topped, thick made, powerful bull.
- \* His dam is a long bodied, powerful female that has put some top bulls in past sales. Her son in the 2017 sale was a top seller to Paul Tyler.

465H

**PRK Headliner 465H \$3500**

Black		Polled		62.5% SA		#737491
Born	BW	205 Wt	Index	11/12 Wt	WDA	Frame
3/5/20	95 lbs	741 lbs	105	880 lbs	3.49 lbs	5.8

GGT P BLK Heavy Hitter <b>GGT Final Choice 119B</b> GGT MS Finality 139Y	GGT P Heavy Duty 100J GGT P Harrah 195K SAV Final Answer 0035 GGT Designer 222W	<b>Dam's Production</b> BW 5 @ 97 WW 5 @ 99 Udder 99
SRS Spartacus 0670Z <b>PRK Roberta 465B</b> PRK Roberta 271Z	SRS Xtra 0347X SRS Seiko 0670S SRS Xpert 0881X PRK Roberta 071X	

CED	BW	WW	YW	MWW	Milk	Marb.	REA	Doc.	Stay.
+13.8	-0.1	+69	+94	+49	+15	+0.3	+0.52	+20	+21

- \* Quad Polled
- \* A balanced, thick made bull that has caught our eye since birth.
- \* His dam is a very attractive and balanced female with lots of thickness and depth.
- \* Typical of the Spartacus daughters she has a great udder.

Sept. 2020



**465H**

880H

**PRK Hoodeenie 880H \$3000**

Hom Black		Polled		62.5% SA		#737494
Born	Adj BW	205 Wt	Index	11/12 Wt	WDA	Frame
2/17/20	82 lbs	676 lbs	95	834 lbs	3.10 lbs	5.4

GGT P BLK Heavy Hitter <b>GGT Final Choice 119B</b> GGT MS Finality 139Y	GGT P Heavy Duty 100J GGT P Harrah 195K SAV Final Answer 0035 GGT Designer 222W	<b>Dam's Production</b> BW 1 @ 82 WW 1 @ 95 Udder 99
MJB Elway 322C <b>PRK Rosebud 880F</b> PRK Rosebud 680D	MAC Quarterback 58Y MJB Yellow Rose 156Z SRS Zeus 0509Z PRK Rosebud 280Z	

CED	BW	WW	YW	MWW	Milk	Marb.	REA	Doc.	Stay.
+11.7	-2.7	+62	+85	+45	+14	+0.4	+0.54	+14	+18

- \* **Potential Heifer Bull** - Quad Polled
- \* A heifer bull with good balance and decent thickness. He comes from a cow family that has a big influence in our herd.
- \* GGT Final Choice is an outcross light birth weight bull that we used last year. His calves came very easily out of a large group of heifers.

Sept. 2020



**880H**

# Optimizers

## 390H PRK Horizon 390H \$3000

Hom Black		Polled		50.0% SA		#737538	
Born	Adj BW	205 Wt	Index	11/12 Wt	WDA	Frame	
3/21/20	94 lbs	703 lbs	99	802 lbs	3.40 lbs	5.8	

SRS Spartacus 0670Z <b>MJB Gladiator 305B</b> MJB Barbie 126Z	SRS Xtra 0347X SRS Seiko 0670S MJB Barbwire 260S MJB Morgiana 102S	<b>Dam's Production</b> BW 6 @ 85 WW 6 @ 104 Udder 68
SRS United 0653U <b>PRK Kimberly 390A</b> PRK Kimberly 990W	SRS Saint 0218S SRS Starr 0653S SRS Recruit 0122R PRK Kimberly 470P	

CED	BW	WW	YW	MWW	Milk	Marb.	REA	Doc.	Stay.
+14.2	+0.6	+59	+83	+48	+18	+0.4	+0.55	+16	+20

\* Quad Polled

\* This is a young bull that is very clean made and attractive. His full brother sold in the Midland Bull Test Sale last year.

\* His dam is a Gold Dam and a heavy milker. She is a long bodied, deep ribbed female and is the Grand Dam to the 790H bull in the sale.

## 554H PRK Husky 554H \$3500

Black		Polled		50.0% SA		#737540	
Born	Adj BW	205 Wt	Index	11/12 Wt	WDA	Frame	
3/3/20	95 lbs	727 lbs	103	878 lbs	3.46 lbs	6.0	

SRS Spartacus 0670Z <b>MJB Gladiator 305B</b> MJB Barbie 126Z	SRS Xtra 0347X SRS Seiko 0670S MJB Barbwire 260S MJB Morgiana 102S	<b>Dam's Production</b> BW 4 @ 91 WW 4 @ 102 Udder 88
PRK Yellowstone 966Y <b>PRK Susannah 554C</b> PRK Susannah 154Y	SRS Uprising 0059U PRK Recipe 966W SRS United 0653U PRK Susannah 837U	

CED	BW	WW	YW	MWW	Milk	Marb.	REA	Doc.	Stay.
+13.6	+1.1	+67	+96	+50	+16	+0.4	+0.63	+18	+19

\* Quad Polled

\* This bull has an extremely attractive phenotype with great balance and thickness.

\* His dam is a very attractive female with tremendous length and depth of rib.

## 627H PRK Highlight 627H \$3000

Hom Black		Polled		62.5% SA		#737541	
Born	Adj BW	205 Wt	Index	11/12 Wt	WDA	Frame	
3/12/20	85 lbs	686 lbs	97	834 lbs	3.40 lbs	5.6	

SRS Spartacus 0670Z <b>MJB Gladiator 305B</b> MJB Barbie 126Z	SRS Xtra 0347X SRS Seiko 0670S MJB Barbwire 260S MJB Morgiana 102S	<b>Dam's Production</b> BW 3 @ 87 WW 3 @ 98 Udder 77
SRS Benchmark 8105B <b>PRK Hickory 627D</b> PRK Hickory 418B	SRS Zeus 0509Z SRS Shannon 8105U OPP Saber 847U PRK Hickory 823U	

CED	BW	WW	YW	MWW	Milk	Marb.	REA	Doc.	Stay.
+15.1	+0.1	+68	+96	+48	+15	+0.4	+0.68	+11	+19

\* Quad Polled

\* This bull is a younger Gladiator son that demonstrates good length and eye appeal. His full brother last year was a top bull in the sale and indexed 118 on feed.

\* His dam has great length and as much depth as any cow in our herd.

Sept. 2020



**554H**

Sept. 2020



**627H**

March 2020



Full Brother

**PRK Genesis 627F- As a Yearling**

# Optimizers

685H

**PRK Hook 685H**

\$2500

Black		Polled		50.0% SA		#737542	
Born	Adj BW	205 Wt	Index	11/12 Wt	WDA	Frame	
3/19/20	95 lbs	757 lbs	107	848 lbs	3.56 lbs	5.9	

SRS Spartacus 0670Z	SRS Xtra 0347X	<b>Dam's Production</b>
<b>MJB Gladiator 305B</b>	SRS Seiko 0670S	BW 3 @ 105
MJB Barbie 126Z	MJB Barbwire 260S	
	MJB Morgiana 102S	
PRK Bonsai 993B	SRS Zeus 0509Z	WW 3 @ 100
<b>PRK Primrose 685D</b>	PRK Honor 993W	
PRK Primrose 188Y	PRK Tonka 298T	Udder 98
	PRK Primrose 983W	

CED	BW	WW	YW	MWW	Milk	Marb.	REA	Doc.	Stay.
+11.1	+1.9	+67	+93	+49	+16	+0.4	+0.63	+13	+19

- \* Quad Polled
- \* This bull is a typical Gladiator calf with lots of thickness and width of top over his hip.
- \* His dam is a good looking female with super length of body.

799H

**PRK Hampton 799H**

\$2500

Black		Scurred		50.0% SA		#737547	
Born	Adj BW	205 Wt	Index	11/12 Wt	WDA	Frame	
3/16/20	71 lbs	696 lbs	98	774 lbs	3.21 lbs	5.3	

SRS Spartacus 0670Z	SRS Xtra 0347X	<b>Dam's Production</b>
<b>MJB Gladiator 305B</b>	SRS Seiko 0670S	BW 2 @ 71
MJB Barbie 126Z	MJB Barbwire 260S	
	MJB Morgiana 102S	
DJF Border Line 815A	C-Bar Evolution 107Y	WW 2 @ 97
<b>PRK Kit 799E</b>	STCY Unity 815U	
PRK Kit 199Y	SRS United 0653U	Udder 88
	PRK Kit 999W	

CED	BW	WW	YW	MWW	Milk	Marb.	REA	Doc.	Stay.
+17.8	-2.7	+58	+82	+47	+19	+0.3	+0.55	+19	+16

- \* **Potential Heifer Bull** - Quad Polled
- \* A smaller framed bull that is very wide made.
- \* His young dam is an easy fleshing female with tremendous thickness and depth and a great personality.

1810H

**PRK Hashtag 1810H**

\$3000

Hom Black		Scurred		50.0% SA		#737554	
Born	Adj BW	205 Wt	Index	11/12 Wt	WDA	Frame	
2/15/20	82 lbs	704 lbs	99	854 lbs	3.15 lbs	5.0	

SRS Xtra 0347X	SRS Uprising 0059U	<b>Dam's Production</b>
<b>SRS Spartacus 0670Z</b>	SRS Norah 0347N	BW 1 @ 82
SRS Seiko 0670S	SRS Nevada 9378N	
	SRS Priceless 0447P	
SRS Catalyst 0435C	SRS Zeus 0509Z	WW 1 @ 99
<b>PRK Rosebud 1810F</b>	SRS Patchwork 0435P	
PRK Rosebud 570C	SRS Ariat 270A	Udder 99
	PRK Rosebud 070X	

CED	BW	WW	YW	MWW	Milk	Marb.	REA	Doc.	Stay.
+16.1	-1.0	+58	+84	+48	+19	+0.4	+0.42	+18	+20

- \* **Potential Heifer Bull** - Quad Polled
- \* This is a bull that has good shape and thickness for a heifer bull.
- \* His two year old dam is very balanced in her phenotype, with good thickness and length. She also milks well and has a great udder.



**SRS Spartacus 0670Z - Sire & Grandsire**

## EPD and Catalog Explanations

Below is a chart showing the Salers Breed EPD Averages for all 2018 born cattle.

EPD's	CED	BW	WW	YW	MWW	Milk	Marb	REA	Doc	Stay
Breed Av	+12.2	0.0	+56	+78	+44	+16	+0.4	+0.68	+10	+14

**CED (calving ease direct)** - Expressed as a % of unassisted births. A bull with a +17.2 would be expected to produce 5% more unassisted births than the average Salers bull when bred to the same cows.

**Doc (Docility)** - Expressed as a percentage of an animals offspring that would be expected to have mild or restless disposition scores (1 or 2) rather than nervous, flighty, or aggressive(3, 4, or 5). A +20 means an animals offspring would be 10% more likely to have mild disposition scores than the breed average.

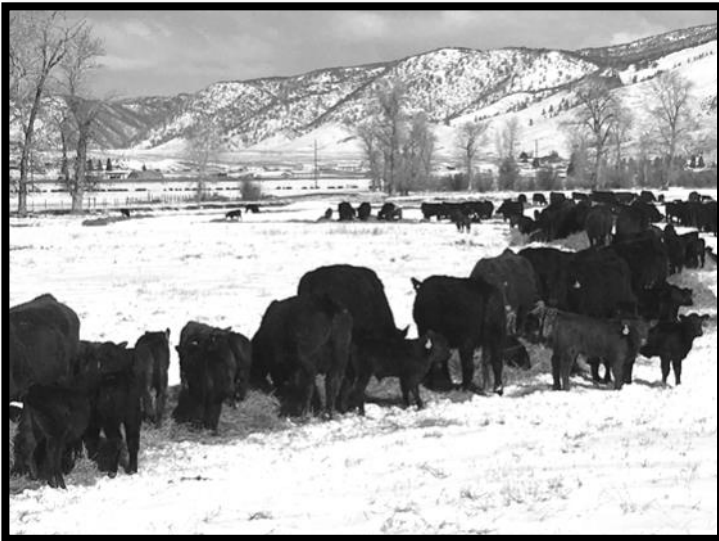
**Stay (Stayability)** - Expressed as a percentage of daughters who will remain in the herd until age 6. Cattle with a stayability of +20 would have 6% more daughters remain in the herd until 6 years old than the average Salers.

**Color - Hom. Black** (Homozygous Black) were DNA tested and will produce all black offspring when bred to red or black cows. **Black** - Black hided animal possessing one black and one red gene. When they are bred to black females they will produce 75% or higher black offspring. When bred to red cows they will produce 50% black calves.

**Adj BW** - Adjusted Birth Weight. We took actual birth weights with a digital scale within 24 hours of being born. These were reported and the Association adjusted them for age of dam. Young cows have weight added to their calves birth weight (2 yr olds add 4-5 lbs, 3 yr olds get 2-3 lbs, and 4 year old cows have 1 pound added).



# Optimizers



## 734H PRK Homegrown 734H \$3000

Black		Scurred		50.0% SA		#737496	
Born	Adj BW	205 Wt	Index	11/12 Wt	WDA	Frame	
2/28/20	94 lbs	708 lbs	100	882 lbs	3.42 lbs	5.9	

SRS Bullseye 592B	SOO Line Motive 9016	<b>Dam's Production</b>
<b>PRK Flint 198F</b>	SRS Juliet 0584R	<b>BW</b> 2 @ 100
PRK Virginia 198Y	SRS Wanted 0218W	<b>WW</b> 2 @ 106
DJF Border Line 815A	PRK Virginia 898U	<b>Udder</b> 98
<b>PRK Replica 734E</b>	C-Bar Evolution 107Y	
PRK Replica 547C	STCY Unity 815U	
	SRS Spartacus 0670Z	
	PRK Replica 365A	

CED	BW	WW	YW	MWW	Milk	Marb.	REA	Doc.	Stay.
+13.8	-0.2	+59	+87	+48	+18	+0.3	+0.51	+17	+12

- \* Quad Polled
- \* This is a PRK Flint son that has a nice pattern and good balance.
- \* His dam is another young DJF Border Line female that is showing good performance in an attractive package.

## 1814H PRK Hightop 1814H \$2500

Black		Polled		50.0% SA		#737497	
Born	Adj BW	205 Wt	Index	11/12 Wt	WDA	Frame	
3/2/20	80 lbs	712 lbs	100	812 lbs	3.18 lbs	5.3	

SRS Bullseye 592B	SOO Line Motive 9016	<b>Dam's Production</b>
<b>PRK Flint 198F</b>	SRS Juliet 0584R	<b>BW</b> 1 @ 80
PRK Virginia 198Y	SRS Wanted 0218W	<b>WW</b> 1 @ 100
PRK Duracell 252D	PRK Virginia 898U	<b>Udder</b> 99
<b>PRK Montana 1814F</b>	DJF Border Line 815A	
PRK Montana 624D	PRK Robbie 252Z	
	MAC F1 Humboldt 312Z	
	PRK Montana 424B	

CED	BW	WW	YW	MWW	Milk	Marb.	REA	Doc.	Stay.
+16.5	-2.5	+54	+79	+45	+18	+0.4	+0.56	+22	+12

- \* **Potential Heifer Bull** - Quad Polled
- \* A heifer bull that should produce some very good females.
- \* His dam is another high quality two year old PRK Duracell daughter that has an excellent disposition. From the same cow family as the 424H bull.

## 854H PRK Honda 854H \$3000

Black		Polled		50.0% SA		#737499	
Born	Adj BW	205 Wt	Index	11/12 Wt	WDA	Frame	
3/1/20	78 lbs	734 lbs	104	868 lbs	3.39 lbs	5.6	

SRS Bullseye 592B	SOO Line Motive 9016	<b>Dam's Production</b>
<b>PRK Flint 198F</b>	SRS Juliet 0584R	<b>BW</b> 1 @ 78
PRK Virginia 198Y	SRS Wanted 0218W	<b>WW</b> 1 @ 104
SRS Dundee 270D	PRK Virginia 898U	<b>Udder</b> 88
<b>PRK Holly 854F</b>	Connealy Greeley	
PRK Holly 454B	SRS Finicky 0838U	
	SRS United 0653U	
	PRK Holly 264Z	

CED	BW	WW	YW	MWW	Milk	Marb.	REA	Doc.	Stay.
+15.6	-1.9	+54	+74	+46	+19	+0.3	+0.51	+22	+14

- \* **Potential Heifer Bull** - Quad Polled
- \* A clean made, attractive heifer bull that still has performance due to his length of body.
- \* His dam is an attractive young female out of our daughter Deana's 4-H cow.

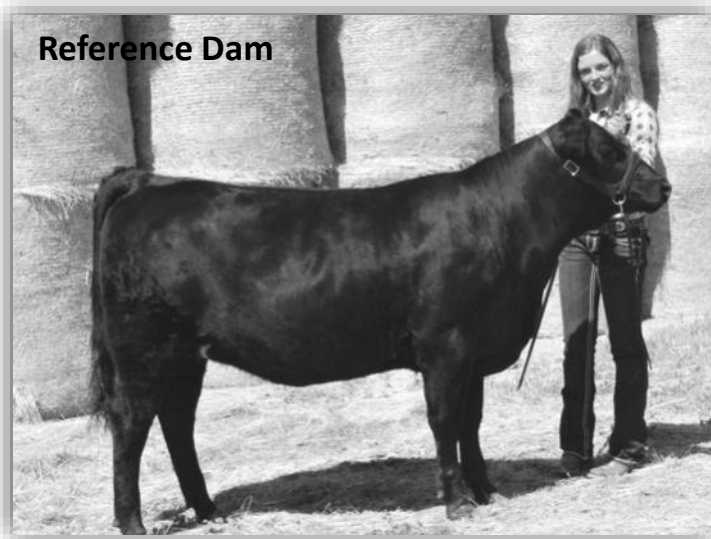
## 841H PRK Highway 841H \$2500

Red		Polled		50.0% SA		#737498	
Born	Adj BW	205 Wt	Index	11/12 Wt	WDA	Frame	
3/10/20	83 lbs	722 lbs	102	820 lbs	3.32 lbs	5.4	

SRS Bullseye 592B	SOO Line Motive 9016	<b>Dam's Production</b>
<b>PRK Flint 198F</b>	SRS Juliet 0584R	<b>BW</b> 1 @ 83
PRK Virginia 198Y	SRS Wanted 0218W	<b>WW</b> 1 @ 102
SRS Ariat 270A	PRK Virginia 898U	<b>Udder</b> 89
<b>PRK Malibu 841F</b>	Tumbstone 050	
PRK Malibu 241Z	SRS Footloose 9927J	
	PRK Poplar 292X	
	PRK Malibu 062X	

CED	BW	WW	YW	MWW	Milk	Marb.	REA	Doc.	Stay.
+14.3	-1.7	+52	+76	+44	+18	+0.3	+0.45	+20	+13

- \* **Potential Heifer Bull** - Quad Polled
- \* His sire, PRK Flint, was used with great success on our heifers. His calves are attractive in their type and have good performance with an average weaning index of 102.
- \* PRK Flint's dam is a Gold Dam and has proven herself as a top female in our herd.



PRK Holly 854F - As a Bred Heifer

# Optimizers

## 886H PRK Hunter 886H \$3000

Black		Polled		50.0% SA		#737503	
Born	Adj BW	205 Wt	Index	11/12 Wt	WDA	Frame	
3/2/20	86 lbs	769 lbs	109	880 lbs	3.45 lbs	6.2	

SRS Bullseye 592B <b>PRK Flint 198F</b> PRK Virginia 198Y MJB Elway 322C <b>PRK Lady 886F</b> PRK Lady 886U	SOO Line Motive 9016 SRS Juliet 0584R SRS Wanted 0218W PRK Virginia 898U MAC Quarterback 58Y MJB Yellow Rose 156Z SRS Policy 9336P PRK Lady 466P	<b>Dam's Production</b> BW 1 @ 86 WW 1 @ 109 Udder 88
--	---	--

CED	BW	WW	YW	MWW	Milk	Marb.	REA	Doc.	Stay.
13.2	-0.8	+57	+75	+47	+18	+0.4	+0.49	+16	+14

\* Quad Polled

\* Hunter is a long bodied calf that has good performance with a weaning index of 109.

\* He descends from the same cow family as the 766H and 466H bulls.

## 680H PRK Hayday 680H \$3500

Hom Black		Polled		50.0% SA		#737525	
Born	Adj BW	205 Wt	Index	11/12 Wt	WDA	Frame	
2/24/20	79 lbs	716 lbs	101	902 lbs	3.44 lbs	5.9	

SRS Dialed In 3160D <b>SRS Forward 0984F</b> SRS Seiko 0984W SRS Zeus 0509Z <b>PRK Rosebud 680D</b> PRK Rosebud 280Z	SRS Bullseye 592B SRS Suzette 3160A SRS Recruit 0122R SRS Seiko 0670S SITZ Uncommon PRK Miss Montana 503R SRS Xpert 0881X PRK Rosebud 070X	<b>Dam's Production</b> BW 3 @ 82 WW 3 @ 103 Udder 88
---	---	--

CED	BW	WW	YW	MWW	Milk	Marb.	REA	Doc.	Stay.
+13.8	-2.9	+59	+83	+51	+22	+0.3	+0.53	+16	+17

\* **Potential Heifer Bull** - Quad Polled

\* This bull possesses good thickness and has good performance for a heifer bull with a balanced EPD profile.

\* His dam is a very long, balanced young female that comes from a great cow family. Related to the 880H, 480H, and 070H bulls as well as PRK Fullback.



## 890H PRK Hondoo 890H \$3000

Hom Black		Polled		50.0% SA		#737504	
Born	Adj BW	205 Wt	Index	11/12 Wt	WDA	Frame	
3/13/20	90 lbs	792 lbs	112	836 lbs	3.43 lbs	5.5	

SRS Bullseye 592B <b>PRK Flint 198F</b> PRK Virginia 198Y SRS Domino 155D <b>PRK Honor 890F</b> PRK Honor 460B	SOO Line Motive 9016 SRS Juliet 0584R SRS Wanted 0218W PRK Virginia 898U SRS Banner 0749B SRS Juliet 0829U SRS Zip Code 0174Z PRK Honor 181Y	<b>Dam's Production</b> BW 1 @ 90 WW 1 @ 112 Udder 99
---	---	--

CED	BW	WW	YW	MWW	Milk	Marb.	REA	Doc.	Stay.
+14.6	-0.9	+61	+86	+49	+18	+0.3	+0.51	+15	+14

\* Quad Polled

\* Hondoo is a younger bull with good balance and thickness in a moderate frame. He also has great weaning numbers and performance.

\* His two year old dam is a very long female with great balance.



## 778H PRK Hershey 778H \$3000

Black		Polled		50.0% SA		#737527	
Born	Adj BW	205 Wt	Index	11/12 Wt	WDA	Frame	
3/10/20	84 lbs	705 lbs	99	830 lbs	3.36 lbs	5.8	

SRS Dialed In 3160D <b>SRS Forward 0984F</b> SRS Seiko 0984W SRS Catalyst 0435C <b>PRK Melanie 778E</b> PRK Melanie 478B	SRS Bullseye 592B SRS Suzette 3160A SRS Recruit 0122R SRS Seiko 0670S SRS Zeus 0509Z SRS Patchwork 0435P SRS Yahtzee 996Y PRK Melanie 278Z	<b>Dam's Production</b> BW 2 @ 90 WW 2 @ 99 Udder 99
---	---	---

CED	BW	WW	YW	MWW	Milk	Marb.	REA	Doc.	Stay.
+11.1	-1.2	+59	+85	+48	+19	+0.3	+0.57	+13	+17

\* Quad Polled

\* His sire, SRS Forward, was our pick of Skinners 2018 bulls for use on our heifers. His first calves came easily and averaged 76 pounds at birth. They have grown well with good depth and thickness and an average weaning index of 102.

# Optimizers



## 793H PRK Highmark 793H \$3000

Hom Black		Polled		50.0% SA		#737528	
Born	Adj BW	205 Wt	Index	11/12 Wt	WDA	Frame	
3/4/20	86 lbs	699 lbs	100	850 lbs	3.36 lbs	5.5	

SRS Dialed In 3160D	SRS Bullseye 592B	<b>Dam's Production</b>
<b>SRS Forward 0984F</b>	SRS Suzette 3160A	<b>BW</b> 3 @ 75
SRS Seiko 0984W	SRS Recruit 0122R	<b>WW</b> 3 @ 99
PRK Captain 098C	SRS Seiko 0670S	<b>Udder</b> 99
<b>PRK Honor 793E</b>	SRS Ariat 270A	
PRK Honor 993W	PRK Virginia 098X	
	SRS Sequel 0122S	
	PRK Honor 345N	

CED	BW	WW	YW	MWW	Milk	Marb.	REA	Doc.	Stay.
+11.1	-1.1	+56	+80	+49	+21	+0.3	+0.59	+13	+16

\* Quad Polled— **Twin**

\* Highmark is a moderate, very thick made, squared hipped bull.

\* His dam is a good uddered, attractive made, and long bodied young female.

## 793bH PRK Highwater 793bH \$2500

Black		Polled		50.0% SA		#737529	
Born	Adj BW	205 Wt	Index	11/12 Wt	WDA	Frame	
3/4/20	73 lbs	685 lbs	100	824 lbs	3.26 lbs	5.4	

SRS Dialed In 3160D	SRS Bullseye 592B	<b>Dam's Production</b>
<b>SRS Forward 0984F</b>	SRS Suzette 3160A	<b>BW</b> 3 @ 75
SRS Seiko 0984W	SRS Recruit 0122R	<b>WW</b> 3 @ 99
PRK Captain 098C	SRS Seiko 0670S	<b>Udder</b> 99
<b>PRK Honor 793E</b>	SRS Ariat 270A	
PRK Honor 993W	PRK Virginia 098X	
	SRS Sequel 0122S	
	PRK Honor 345N	

CED	BW	WW	YW	MWW	Milk	Marb.	REA	Doc.	Stay.
+11.1	-1.1	+56	+80	+49	+21	+0.3	+0.59	+13	+16

\* Quad Polled— **Twin**

\* He was raised on a foster dam. Highwater is a smaller framed bull with lots of shape and thickness across his hip and down his top.

## 847H PRK Hudini 847H \$3500

Hom Black		Polled		50.0% SA		#737530	
Born	Adj BW	205 Wt	Index	11/12 Wt	WDA	Frame	
3/9/20	83 lbs	806 lbs	114	884 lbs	3.56 lbs	6.2	

SRS Dialed In 3160D	SRS Bullseye 592B	<b>Dam's Production</b>
<b>SRS Forward 0984F</b>	SRS Suzette 3160A	<b>BW</b> 1 @ 83
SRS Seiko 0984W	SRS Recruit 0122R	<b>WW</b> 1 @ 114
PRK Duracell 252D	SRS Seiko 0670S	<b>Udder</b> 89
<b>PRK Topaz 847F</b>	DJF Border Line 815A	
PRK Topaz 623D	PRK Robbie 252Z	
	SRS Bullseye 592B	
	PRK Winter 945W	

CED	BW	WW	YW	MWW	Milk	Marb.	REA	Doc.	Stay.
+14.5	-2.1	+61	+90	+52	+22	+0.3	+0.66	+16	+13

\* **Potential Heifer Bull**— Quad Polled

\* There is a lot of growth performance out of this potential heifer bull. He is a deep bodied and thick made calf.

\* His dam is a good milking, long bodied, little larger framed PRK Duracell daughter.

## 879H PRK Holland 879H \$3500

Black		Polled		50.0% SA		#737488	
Born	Adj BW	205 Wt	Index	11/12 Wt	WDA	Frame	
3/13/20	92 lbs	771 lbs	109	872 lbs	3.57 lbs	5.6	

SRS Dialed In 3160D	SRS Bullseye 592B	<b>Dam's Production</b>
<b>SRS Forward 0984F</b>	SRS Suzette 3160A	<b>BW</b> 1 @ 92
SRS Seiko 0984W	SRS Recruit 0122R	<b>WW</b> 1 @ 109
SRS Benchmark 8105B	SRS Seiko 0670S	<b>Udder</b> 99
<b>PRK Kit 879F</b>	SRS Zeus 0509Z	
PRK Kit 699D	SRS Shannon 8105U	
	DJF Border Line 815A	
	PRK Kit 999W	

CED	BW	WW	YW	MWW	Milk	Marb.	REA	Doc.	Stay.
+14.1	-1.7	+62	+88	+49	+18	+0.3	+0.54	+20	+14

\* Quad Polled

\* Holland is a good dispositioned, moderate framed bull, with good thickness and balance.

\* His dam is a top end two year old with a moderate frame and comes from another great cow family. From the same cow family as 899H, 799H, 599H, and 499H.





# Optimizers

## 169H PRK Heatseeker 169H \$3000

Red		Scurred		50.0% SA		#737514	
Born	Adj BW	205 Wt	Index	11/12 Wt	WDA	Frame	
3/6/20	97 lbs	704 lbs	99	844 lbs	3.36 lbs	6.1	

DJF Border Line 815A	C-Bar Evolution 107Y	<b>Dam's Production</b>
<b>PRK Fenway 384F</b>	STCY Unity 815U	<b>BW</b> 8 @ 85
PRK Lass 384F	SRS WDA 270W	
	PRK Lass 184Y	<b>WW</b> 8 @ 99
PRK Tonka 298T	SRS Nokia 9722N	
<b>PRK Rebecca 169Y</b>	PRK Virginia 298M	<b>Udder</b> 78
PRK Rebecca 569R	SRS Legend 9816L	
	PRK 285M	

CED	BW	WW	YW	MWW	Milk	Marb.	REA	Doc.	Stay.
+12.7	+0.6	+55	+82	+46	+18	+0.3	+0.46	+25	+14

\* Quad Polled

\* Heatseeker is an easy going bull with good length of body and thickness.

\* His dam is a very gentle and proven cow, whose last four bulls have all made the sale.

## 574H PRK Hickory 574H \$3500

Red		Polled		50.0% SA		#737518	
Born	Adj BW	205 Wt	Index	11/12 Wt	WDA	Frame	
2/28/20	90 lbs	749 lbs	106	932 lbs	3.61 lbs	6.1	

DJF Border Line 815A	C-Bar Evolution 107Y	<b>Dam's Production</b>
<b>PRK Fenway 384F</b>	STCY Unity 815U	<b>BW</b> 4 @ 88
PRK Lass 384F	SRS WDA 270W	
	PRK Lass 184Y	<b>WW</b> 4 @ 103
SRS Yakima 9118YY	SRS Unreal 0151U	
<b>PRK Jasmine 574C</b>	SRS Lace 9118W	<b>Udder</b> 87
PRK Jasmine 194Y	SRS United 0653U	
	PRK Jasmine 894U	

CED	BW	WW	YW	MWW	Milk	Marb.	REA	Doc.	Stay.
+13.9	-0.3	+60	+91	+47	+17	+0.4	+0.51	+20	+13

\* Quad Polled

\* This is a very clean fronted bull with a lot of thickness in his quarter and good depth of rib.

\* Scott showed him at the fair and received Grand Champion Male beef.

\* His dam is a very balanced, feminine female whose other son was a top selling bull in our 2018 sale to Two Creek Ranch.

## 599H PRK Hawkeye 599H \$3500

Red		Polled		50.0% SA		#737519	
Born	Adj BW	205 Wt	Index	11/12 Wt	WDA	Frame	
2/29/20	78 lbs	716 lbs	101	898 lbs	3.49 lbs	5.5	

DJF Border Line 815A	C-Bar Evolution 107Y	<b>Dam's Production</b>
<b>PRK Fenway 384F</b>	STCY Unity 815U	<b>BW</b> 4 @ 78
PRK Lass 384F	SRS WDA 270W	
	PRK Lass 184Y	<b>WW</b> 4 @ 101
SRS Zeus 0509Z	SITZ Uncommon	
<b>PRK Kit 599C</b>	PRK Miss Montana 503R	<b>Udder</b> 87
PRK Kit 999W	SRS Marksman 0059M	
	PRK Kit 245M	

CED	BW	WW	YW	MWW	Milk	Marb.	REA	Doc.	Stay.
+15.3	-2.2	+56	+82	+47	+19	+0.4	+0.43	+16	+13

\* Potential Heifer Bull - Quad Polled

\* This calf will make a consistent heifer bull, while still possessing good performance and length. He had a closely related brother sell in last years sale.

\* His dam's four calves have all been keepers. She is the grand dam to the 899H bull and is part of a very consistent cow family.

## 194H PRK Homestretch 194H \$2500

Red		Polled		50.0% SA		#737515	
Born	Adj BW	205 Wt	Index	11/12 Wt	WDA	Frame	
3/5/20	80 lbs	681 lbs	96	810 lbs	3.21 lbs	5.4	

DJF Border Line 815A	C-Bar Evolution 107Y	<b>Dam's Production</b>
<b>PRK Fenway 384F</b>	STCY Unity 815U	<b>BW</b> 8 @ 79
PRK Lass 384F	SRS WDA 270W	
	PRK Lass 184Y	<b>WW</b> 8 @ 90
SRS United 0653U	SRS Saint 0218S	
<b>PRK Jasmine 194Y</b>	SRS Starr 0653S	<b>Udder</b> 76
PRK Jasmine 894U	OPP Special Duty 626S	
	PRK 392N	

CED	BW	WW	YW	MWW	Milk	Marb.	REA	Doc.	Stay.
+18.0	-3.0	+50	+75	+39	+15	+0.3	+0.47	+17	+13

\* Potential Heifer Bull - Quad Polled

\* This bull should make a fool proof calving ease heifer bull with lots of length.

\* Homestretch has three Gold Dams in his pedigree.

\* His dam is a good looking SRS United daughter, who is the grand dam to the 574H bull.



# Optimizers

## 790H PRK Huntley 790H \$3000

Red		Polled		50.0% SA		#737523
Born	Adj BW	205 Wt	Index	11/12 Wt	WDA	Frame
2/29/20	78 lbs	678 lbs	96	822 lbs	3.20 lbs	5.5

DJF Border Line 815A <b>PRK Fenway 384F</b> PRK Lass 384F PRK Cash 160C <b>PRK Kimberly 790E</b> PRK Kimberly 390A	C-Bar Evolution 107Y STCY Unity 815U SRS WDA 270W PRK Lass 184Y SRS Zeus 0509Z PRK Flicka 160Y SRS United 0653U PRK Kimberly 990W	<b>Dam's Production</b> BW 2 @ 78 WW 2 @ 99 Udder 99
---	--	---

CED	BW	WW	YW	MWW	Milk	Marb.	REA	Doc.	Stay.
+16.4	-2.0	+55	+84	+46	+18	+0.4	+0.47	+17	+15

- \* **Potential Heifer Bull**– Quad Polled
- \* Huntley is a lighter birthweight bull with good length and muscle expression.
- \* He has four Gold Dams in his pedigree. His dam is a good uddered, long female, and a maternal sister to the 390H bull.

## 876H PRK Howdy 876H \$3000

Red		Polled		50.0% SA		
Born	BW	205 Wt	Index	11/12 Wt	WDA	Frame
2/16/20	88 lbs	718 lbs	101	866 lbs	3.21 lbs	5.8

DJF Border Line 815A <b>PRK Fenway 384F</b> PRK Lass 384F PRK Cash 160C <b>PRK 876F</b> PRK 576C	C-Bar Evolution 107Y STCY Unity 815U SRS WDA 270W PRK Lass 184Y SRS Zeus 0509Z PRK Flicka 160Y SRS Yakima 9118Y PRK 567R	<b>Dam's Production</b> BW 1 @ 84 WW 1 @ 100 Udder 88
---	---	--

CED	BW	WW	YW	MWW	Milk	Marbling	REA

- \* Howdy sells as a commercial bull.
- \* He is a thick made, balanced bull that has stuck out since birth in the first calf heifer group.
- \* PRK Fenway was a top selling bull in our 2018 sale to the White Rock Ranch. He is out of one of our very best cows, and his calves present lots of length and thickness through their quarter.

## 467H PRK Hayward 467H \$3500

Hom Black		Scurred		50.0% SA		#737418
Born	Adj BW	205 Wt	Index	11/12 Wt	WDA	Frame
3/1/20	87 lbs	725 lbs	102	910 lbs	3.55 lbs	5.9

SRS Ariat 270A <b>SRS Cinch 0778C</b> SRS Pony Tail 0778T SRS Zip Code 0174Z <b>PRK Glasgow 467B</b> PRK Glasgow 167Y	Tombstone 050 SRS Footloose 9927J STS Rembrandt 8300R SRS Pony Tail 0302N SRS Uprising 0059U SRS Laurel 0174L PRK Tonka 298T PRK Glasgow 547R	<b>Dam's Production</b> BW 5 @ 93 WW 5 @ 106 Udder 66
--	--	--

CED	BW	WW	YW	MWW	Milk	Marb.	REA	Doc.	Stay.
+14.8	-0.7	+58	+86	+45	+16	+0.4	+0.38	+25	+19

- \* This bull will put a lot of capacity, thickness, and muscle into a set of calves.
- \* His dam is extremely deep bodied and a thick made female that milks very heavy.

## 794H PRK Historic 794H \$3000

Red		Polled		50.0% SA		#737524
Born	Adj BW	205 Wt	Index	11/12 Wt	WDA	Frame
2/14/20	90 lbs	668 lbs	94	842 lbs	3.10 lbs	5.4

DJF Border Line 815A <b>PRK Fenway 384F</b> PRK Lass 384F PRK Cinch 0778C <b>PRK Holly 794E</b> PRK Holly 494B	C-Bar Evolution 107Y STCY Unity 815U SRS WDA 270W PRK Lass 184Y SRS Ariat 270A SRS Pony Tail 0778T SRS Zip Code 0174Z PRK Holly 794T	<b>Dam's Production</b> BW 2 @ 88 WW 2 @ 95 Udder 99
---	---	---

CED	BW	WW	YW	MWW	Milk	Marb.	REA	Doc.	Stay.
+15.1	-0.6	+57	+90	+44	+15	+0.4	+0.45	+16	+14

- \* Quad Polled
- \* This is a very well balanced bull with good eye appeal and thickness.
- \* His young dam is one of our favorites for phenotype, udder and milk. Her first bull sold in last years sale.

## 155H PRK Highlander 155H \$3000

Red		Scurred		50.0% SA		#738214
Born	Adj BW	205 Wt	Index	11/12 Wt	WDA	Frame
3/10/20	95 lbs	756 lbs	107	874 lbs	3.54 lbs	6.4

SRS Ariat 270A <b>SRS Cinch 0778C</b> SRS Pony Tail 0778T SRS Wanted 0218W <b>PRK Replica 155Y</b> PRK Replica 853U	Tombstone 050 SRS Footloose 9927J STS Rembrandt 8300R SRS Pony Tail 0302N S A V 004 Density 4336 SRS Juliet 0218M PRK Sonic 711S PRK Replica 575R	<b>Dam's Production</b> BW 8 @ 93 WW 8 @ 103 Udder 88
--	--	--

CED	BW	WW	YW	MWW	Milk	Marb.	REA	Doc.	Stay.
13.4	+0.2	+61	+91	+46	+16	+0.4	+0.52	+21	+15

- \* Highlander is an attractive made, very long bodied and balanced bull.
- \* His dam is an easy fleshing thick made female.
- \* SRS Cinch daughters are making good females with excellent udders.



**467H Pair**

# Enhancers

## 424H PRK Hawk 424H \$3500

Black		Polled		37.5% SA	37.5% Simm	#737443	
Born	Adj BW	205 Wt	Index	11/12 Wt	WDA	Frame	
3/1/20	79 lbs	751 lbs	106	972 lbs	3.80 lbs	6.0	

Hook's Black Hawk 50B	Hook's Xavier 14X	<b>Dam's Production</b>
<b>Hook's Eagle 6E</b>	Hook's Yvette 100Y	<b>BW</b> 5 @ 79
Hook's Crystal 1C	GW-WBF Substance 820Y	<b>WW</b> 5 @ 101
SRS United 0653U	Hook's Underestimated 6U	<b>Udder</b> 89
<b>PRK Montana 424B</b>	SRS Saint 0218S	
PRK Montana 807U	SRS Starr 0653S	
	DJF Rolen 5002R	
	PRK Montana Lass 507R	

CED	BW	WW	YW	MWW	Milk	Marb.	REA	Doc.	Stay.
+17.2	-2.5	+76	+118	+57	+19	+0.5	+0.92	+25	+18

\* **Potential Heifer Bull**- Quad Polled

\* Hawk is a good natured, very deep bodied bull. He is a lighter birthweight bull that still has a lot of performance.  
 \* He has a full sister in our bred heifer group that we have been impressed with. His dam is a quality female with lots of length, thickness and a good disposition.

## 615H PRK Hercules 615H \$3500

Black		Polled		37.5% SA	37.5% Simm	#737445	
Born	Adj BW	205 Wt	Index	11/12 Wt	WDA	Frame	
2/26/20	83 lbs	834 lbs	118	1060 lbs	4.08 lbs	6.3	

Hook's Black Hawk 50B	Hook's Xavier 14X	<b>Dam's Production</b>
<b>Hook's Eagle 6E</b>	Hook's Yvette 100Y	<b>BW</b> 3 @ 80
Hook's Crystal 1C	GW-WBF Substance 820Y	<b>WW</b> 3 @ 109
MAC F1 Humboldt 312Z	Hook's Underestimated 6U	<b>Udder</b> 78
<b>PRK Highlight 615D</b>	Werner War Party 2417	
PRK Highlight 409B	MAC BLK Melody 243M	
	KEYS Zodiac 20Z	
	PRK Highlight 109Y	

CED	BW	WW	YW	MWW	Milk	Marb.	REA	Doc.	Stay.
+14.7	-2.1	+86	+131	+65	+22	+0.5	+0.98	+24	+17

\* **POWERFUL**. Hercules lives up to his name and has been a standout since birth. Weaned in early October at 930 pounds with no creep. Probably the greatest birth to weaning spread bull we have ever raised. Currently the heaviest bull with the highest WDA in the sale.

\* His dam is a top end female with a great disposition, excellent length and is heavy milking. Her first bull had a 109 Mid-land index and sold for \$4750.

## 419H PRK Hollywood 419H \$3500

Hom Black		Polled		37.5% SA	31.3% Simm	#737549	
Born	Adj BW	205 Wt	Index	11/12 Wt	WDA	Frame	
2/25/20	84 lbs	721 lbs	102	910 lbs	3.49 lbs	6.0	

Hook's Shear Force 38K	Nichols Legacy G151	<b>Dam's Production</b>
<b>SDS Graduate 006X</b>	C&D Tracy	<b>BW</b> 5 @ 90
SDS Queen 814U	ALC Big Eye D09N	<b>WW</b> 5 @ 103
SRS United 0653U	SDS Queen 443P	<b>Udder</b> 68
<b>PRK Hannah 419B</b>	SRS Saint 0218S	
PRK Hannah 219Z	SRS Starr 0653S	
	SRS Ultimate 0730X	
	PRK Hannah 716T	

CED	BW	WW	YW	MWW	Milk	Marb.	REA	Doc.	Stay.
+14.4	-1.4	+66	+98	+55	+22	+0.2	+0.87	+18	+21

\* **Quad Polled**

\* Hollywood is a deep bodied, balanced bull with a lot of style.

\* His dam is a long bodied, balanced female, that our son Spencer showed at the fair for a few years. She is the grand dam to the 729H bull.

## 533H PRK Harrison 533H \$2500

Black		Polled		37.5% SA	37.5% Simm	#737444	
Born	Adj BW	205 Wt	Index	11/12 Wt	WDA	Frame	
3/2/20	83 lbs	643 lbs	91	848 lbs	3.33 lbs	5.5	

Hook's Black Hawk 50B	Hook's Xavier 14X	<b>Dam's Production</b>
<b>Hook's Eagle 6E</b>	Hook's Yvette 100Y	<b>BW</b> 4 @ 84
Hook's Crystal 1C	GW-WBF Substance 820Y	<b>WW</b> 4 @ 96
SRS Ariat 270A	Hook's Underestimated 6U	<b>Udder</b> 87
<b>PRK Montana 533C</b>	Tombstone 050	
PRK Montana 213Z	SRS Footloose 9927J	
	TSB Outback 132U	
	PRK Montana 813U	

CED	BW	WW	YW	MWW	Milk	Marb.	REA	Doc.	Stay.
+15.0	-1.9	+72	+114	+52	+16	+0.4	+0.87	+15	+17

\* **Potential Heifer Bull**- Quad Polled

\* This is a lighter birthweight bull that still has good shape and is gaining well on feed, typical of the Eagle calves.  
 \* His dam is a very well made female with lots of thickness and an excellent disposition. She is the grand dam to 830H, and maternal sister to 213H.



**PRK Hannah 419B - As a 2 Yr. Old**

# Enhancers

## 1816H PRK Hoss 1816H \$3500

Hom Black		Scurred	25% SA	31.3% Simm	#737551	
Born	Adj BW	205 Wt	Index	11/12 Wt	WDA	Frame
2/13/20	80 lbs	776 lbs	110	978 lbs	3.58 lbs	5.6

Hook's Shear Force 38K SDS Graduate 006X SDS Queen 814U MJB Elway 322C PRK Lady 1816F PRK Lady 1516C	Nichols Legacy G151 C&D Tracy ALC Big Eye D09N SDS Queen 443P MAC Quarterback 58Y MJB Yellow Rose 156Z PRK Ace 081A PRK Lady 886U	<b>Dam's Production</b> BW 1 @ 80 WW 1 @ 110 Udder 99
---	--	--

CED	BW	WW	YW	MWW	Milk	Marb.	REA	Doc.	Stay.
+15.4	-2.2	+71	+101	+58	+23	+0.2	+0.85	+13	+17

### \* Potential Heifer Bull

\* Here is an attractive patterned bull that is very deep ribbed. It's hard to find this much performance coupled with a light birth weight especially out of a first calf heifer.  
\* His dam is a good milking, excellent uddered, very feminine female tied together in a balanced package.



## 830H PRK Harley 830H \$3500

Black		Polled	31.3% SA	31.3% Simm	#737553	
Born	Adj BW	205 Wt	Index	11/12 Wt	WDA	Frame
2/20/20	85 lbs	827 lbs	117	1012 lbs	3.80 lbs	6.3

Hook's Shear Force 38K SDS Graduate 006X SDS Queen 814U DJF Border Line 815A PRK Montana 830F PRK Montana 533C	Nichols Legacy G151 C&D Tracy ALC Big Eye D09N SDS Queen 443P C-Bar Evolution 107Y STCY Unity 815U SRS Ariat 270A PRK Montana 213Z	<b>Dam's Production</b> BW 1 @ 85 WW 1 @ 117 Udder 77
---	---	--

CED	BW	WW	YW	MWW	Milk	Marb.	REA	Doc.	Stay.
+15.5	-1.5	+77	+120	+60	+22	+0.1	+0.92	+20	+15

### \* Quad Polled

\* This is a well put together bull that is hard to find fault with. He is a complete package with impressive numbers and a great phenotype. Harley is a very smooth designed bull for how much power and thickness he has. Second heaviest and second highest WDA bull in the sale.  
\* His two year old dam is a heavy milking female backed by some powerful cows.

## 827H PRK Heston 827H \$3000

Hom Black		Scurred	37.5% SA	31.3% Simm	#737552	
Born	Adj BW	205 Wt	Index	11/12 Wt	WDA	Frame
2/23/20	100 lbs	770 lbs	109	896 lbs	3.41 lbs	6.4

Hook's Shear Force 38K SDS Graduate 006X SDS Queen 814U PRK Duracell 252D PRK Heavenly 827F PRK Heavenly 121Y	Nichols Legacy G151 C&D Tracy ALC Big Eye D09N SDS Queen 443P DJF Border Line 815A PRK Robbie 252Z SRS Wyatt Earp 965W PRK Heavenly 011K	<b>Dam's Production</b> BW 1 @ 100 WW 1 @ 109 Udder 99
--	---	---

CED	BW	WW	YW	MWW	Milk	Marb.	REA	Doc.	Stay.
+11.3	0.0	+69	+106	+57	+23	+0.2	+0.86	+6	+16

### \* Quad Polled

\* Heston is a deep bodied, bigger framed bull that should add a lot of performance to his calves.  
\* His dam is a very long bodied great two year old PRK Duracell daughter with an excellent udder.

## Breed Explanations

**Optimizer** - Term used by the Salers Association to refer to cattle that are crossbred between registered Salers and Angus or Red Angus cattle.

**Enhancer** - Name we have given to our 3 way cross cattle which are made up of Salers, Simmental, and Angus or Red Angus. We have been using 1/2 to 3/4 Salers X Angus or Red Angus and breeding them to 1/2 to 3/4 Simmental X Angus or Red Angus. We are more concerned with type of cattle than specific percentages.

We have been breeding Salers cattle for 25 years and prior to that were using Simmental in our commercial herd. We have decided to again incorporate some Simmental genetics into some of our cattle. We feel this can increase the level of hybrid vigor and genetic diversity available to our customers. Simmental can contribute performance, depth, thickness, and rib eye area. Salers adds calving ease, calf vigor, dressing percentage, fertility, hardiness and a cleaner more eye appealing phenotype. All three of the breeds are very strong in maternal traits and that continues to be a big focus of our program! We plan to continue to breed Salers cattle as well as Optimizers as we increase and develop our Enhancers.





# Salers

## 020H PRK Horsepower 020H \$3500

Black		Polled		PB Salers		#737466
Born	Adj BW	205 Wt	Index	11/12 Wt	WDA	Frame
3/10/20	96 lbs	773 lbs	109	898 lbs	3.64 lbs	6.4

MAC Centennial 167C	That's Zeppelin 134Z	<b>Dam's Production</b>
<b>MAC Earthquake 158E</b>	MAC Wynne 258W	BW 10 @ 89
MAC Zinnia 207Z	WHR Wyo Diamond	
SRS Tahoe 0512T	MAC Von 383X	WW 10 @ 102
<b>PRK Birch 020X</b>	TSB PLD Marcus 27N	
PRK Birch 630S	SRS Rapture 0512R	Udder 68
	SRS Nokia 9722N	
	SRS Birch 9846H	

CED	BW	WW	YW	MWW	Milk	Marb.	REA	Doc.	Stay.
+12.7	+1.4	+61	+82	+51	+21	+0.4	+0.73	+8	+15

\* Quad Polled

\* This is a thick made purebred calf, with the highest WDA among the Salers.

\* His dam is a moderate framed, heavy milking purebred cow that has raised several top calves.

Sept. 2020



## 703H PRK High Five 703H \$3000

Black		Scurred		PB Salers		#737476
Born	Adj BW	205 Wt	Index	11/12 Wt	WDA	Frame
3/8/20	91 lbs	700 lbs	99	802 lbs	3.22 lbs	5.9

MAC Centennial 167C	That's Zeppelin 134Z	<b>Dam's Production</b>
<b>MAC Earthquake 158E</b>	MAC Wynne 258W	BW 2 @ 89
MAC Zinnia 207Z	WHR Wyo Diamond	
PRK Casino 020C	MAC Von 383X	WW 2 @ 95
<b>PRK Montana 703E</b>	SRS Outback 0809X	
PRK Montana 203Z	PRK Birch 020X	Udder 88
	SRS Wyoming 9939W	
	PRK Montana 003X	

CED	BW	WW	YW	MWW	Milk	Marb.	REA	Doc.	Stay.
+13.3	+0.8	+58	+78	+46	+17	+0.4	+0.78	-2	+16

\* Quad Polled

\* This calf is an attractive patterned purebred calf.

\* MAC Earthquake sires calves with thickness and muscle expression. He sired a son that topped the Macdonald Ranches Production sale last year.

## 798H PRK Hurricane 798H \$2500

Black		Polled		75.0% SA		#737478
Born	Adj BW	205 Wt	Index	11/12 Wt	WDA	Frame
3/8/20	92 lbs	669 lbs	94	816 lbs	3.28 lbs	5.8

MAC Centennial 167C	That's Zeppelin 134Z	<b>Dam's Production</b>
<b>MAC Earthquake 158E</b>	MAC Wynne 258W	BW 2 @ 84
MAC Zinnia 207Z	WHR Wyo Diamond	
SRS Cinch 0778C	MAC Von 383X	WW 2 @ 97
<b>PRK Ruth 798E</b>	SRS Ariat 270A	
PRK Ruth 440B	SRS Pony Tail 0778T	Udder 99
	SRS United 0653U	
	PRK Ruth 250Z	

CED	BW	WW	YW	MWW	Milk	Marb.	REA	Doc.	Stay.
+13.6	+0.4	+58	+84	+46	+18	+0.3	+0.57	+12	+18

\* Quad Polled

\* Hurricane is a good patterned, attractive and level made bull.

\* His dam is a great uddered, very long bodied, and balanced female.

## 968H PRK Hitachi 968H \$3000

Hom Black		Polled		75.0% SA		#737464
Born	Adj BW	205 Wt	Index	11/12 Wt	WDA	Frame
3/18/20	96 lbs	723 lbs	102	836 lbs	3.50 lbs	6.4

MAC Centennial 167C	That's Zeppelin 134Z	<b>Dam's Production</b>
<b>MAC Earthquake 158E</b>	MAC Wynne 258W	BW 10 @ 86
MAC Zinnia 207Z	WHR Wyo Diamond	
SRS Sequel 0122S	MAC Von 383X	WW 10 @ 99
<b>PRK Pepsi 968W</b>	Connealy Danny Boy	
PRK Pepsi 449P	SRS Aura 0122L	Udder 68
	SRS Legend 9816H	
	9979J AR/SM/XX Dam	

CED	BW	WW	YW	MWW	Milk	Marb.	REA	Doc.	Stay.
+10.8	+1.4	+55	+74	+49	+22	+0.4	+0.68	+4	+16

\* Here is a younger bull with a little more frame that is clean made and long bodied.

\* His dam has stood the test of time and is a good milker and long spined.



# Salers

## 213H PRK Hondo 213H \$3000

Black		Polled		PB Salers		#737505	
Born	Adj BW	205 Wt	Index	11/12 Wt	WDA	Frame	
3/7/20	90 lbs	694 lbs	98	8.32 lbs	3.33 lbs	6.5	

MAC Decade 140D	MAC Union Station 87U	<b>Dam's Production</b>
<b>MAC Frontier 184F</b>	MAC Zoe 503Z	<b>BW</b> 7 @ 88
MAC Yorann 258Y	MAC Torrington 139T	<b>WW</b> 7 @ 99
TSB Outback 132U	MAC Royann 100R	<b>Udder</b> 76
<b>PRK Montana 213Z</b>	PCSL Czar 47S	
PRK Montana 813U	TSB PLD Kari 106S	
	SRS Nokia 9722N	
	PRK Miss Montana 313N	

CED	BW	WW	YW	MWW	Milk	Marb.	REA	Doc.	Stay.
+12.5	+0.7	+58	+78	+47	+18	+0.4	+0.93	+10	+18

- \* Quad Polled
- \* Hondo is a smooth made, long bodied, stylish purebred Salers bull.
- \* His dam is a heavy milking, thick, deep bodied purebred cow. All four of her bulls have made the sale, with last years being a highlight. PRK Goldrush sold to Silver Spur Salers for \$5000 in last years sale and indexed 117 on feed.

## 720H PRK Highpoint 720H \$2500

Red		Polled		87.5% SA		#737513	
Born	Adj BW	205 Wt	Index	11/12 Wt	WDA	Frame	
3/10/20	92 lbs	714 lbs	101	800 lbs	3.24 lbs	6.1	

MAC Decade 140D	MAC Union Station 87U	<b>Dam's Production</b>
<b>MAC Frontier 184F</b>	MAC Zoe 503Z	<b>BW</b> 2 @ 93
MAC Yorann 258Y	MAC Torrington 139T	<b>WW</b> 2 @ 103
SRS Tahoe 0512T	MAC Royann 100R	<b>Udder</b> 99
<b>PRK Ruth 720E</b>	TSB PLD Marcus 27U	
PRK Ruth 850U	SRS Rapture 0512R	
	SRS Sequel 0122S	
	PRK Ruth 550R	

CED	BW	WW	YW	MWW	Milk	Marb.	REA	Doc.	Stay.
+11.2	+1.5	+58	+84	+48	+19	+0.4	+0.84	+17	+16

- \* Quad Polled
- \* This is a deep ribbed bull with a little bigger frame.
- \* The dam is a good uddered, longer and bigger framed female. Her bull sold to White Rock Ranch in last years sale.

March 2020



Maternal Brother

## PRK Gold Rush 213G - As a Yearling

## 506H PRK Hiawatha 506H \$3000

Red		Polled		PB Salers		#737414	
Born	Adj BW	205 Wt	Index	11/12 Wt	WDA	Frame	
3/3/20	91 lbs	709 lbs	100	858 lbs	3.38 lbs	5.8	

MAC Centurion 240X	D Century	<b>Dam's Production</b>
<b>MAC Anders 29A</b>	MAC Rissa 379R	<b>BW</b> 4 @ 92
WJM Uriah 249U	MAC Lennox 314L	<b>WW</b> 4 @ 101
SRS Zerox 1058Z	WJM Petra 117P	<b>Udder</b> 98
<b>PRK Hickory 506C</b>	SRS Wyoming 9939J	
PRK Hickory 116Y	SRS Finicky 1058X	
	DJF Whiskey River 9006W	
	PRK Hickory 603S	

CED	BW	WW	YW	MWW	Milk	Marb.	REA	Doc.	Stay.
+14.1	-1.0	+54	+73	+47	+20	+0.4	+0.78	+14	+18

- \* Quad Polled
- \* This is a deep bodied bull with good thickness in his quarter.
- \* His dam possesses lots of capacity and is a good milking female.



# Bred Heifers

Most of these heifers were bred, born, and raised here on the ranch. Last fall we did hand pick a few heifers from a couple of our long time commercial customers, so 7 of these heifers are from those genetics. They were all developed together through the winter on long stem grass hay. They have not been fed any concentrates or supplements other than mineral. These heifers sell as commercial heifers even though many of them are registered females and siblings to the bulls selling in this and past sales. They were bred to calving ease sires for both AI and clean-up bulls. You can find most of their service sires listed following the heifer lots or in the Reference Sire section before the bull lots. They were ultra sounded for calving dates on Aug. 10th after a 60 day breeding season. We have sorted the heifers into smaller groups by calving dates. They will sell in the silent auction along with the bulls. The heifers have base prices listed with each group on a per head basis. The bidding will proceed with \$25 per head bid increases until the close of the sale at 2 pm on Dec. 15th. We would ask that you make arrangements to pick up your heifers by the end of the year. A video of the heifer lots will be available on our web site or you may come at any time to view the heifers.



## Group A

**\$ 1550**

Number	Sire	Color	% Saler	Bred To	Due Date	Calf %	WT
<b>135G</b>	MJB Gladiator	Black	5/8	GGT Final Choice	2/14	5/8	1085
<b>146Y</b>	PRK Cash	Black	1/2	PRK Flint	2/16	1/2	1125
<b>269G</b>	MJB Gladiator	Black	1/2	MJB Velocity	2/19	1/2	1165
<b>667G</b>	SRS Dundee	Black	1/2	GGT Final Choice	2/17	1/2	1120
<b>680Y</b>	MJB Gladiator	Black	1/2	GGT Final Choice	2/18	5/8	1170
<b>923G</b>	DJF Daybreak	Black	PB	MAC Anders	2/14	PB	1130



## Group B

**\$ 1500**

Number	Sire	Color	% Saler	Bred To	Due Date	Calf %	WT
<b>490o</b>	Commercial	Black	1/2	SRS Guideline	2/24	1/2	1110
<b>12W</b>	Commercial	Black	1/2	PRK Gallant	3/1	1/2	1110
<b>392Y</b>	SRS Dundee	Black	1/2	PRK Flint	3/9	1/2	1150
<b>075G</b>	PRK Diablo	Black	1/2	SRS Forward	3/11	1/2	1155



## Group C

**\$ 1500**

Number	Sire	Color	% Saler	Bred To	Due Date	Calf %	WT
<b>502Y</b>	SRS Bullseye	Red	3/4	PRK Duracell	2/23	5/8	1070
<b>702Y</b>	PRK Casino	Red	PB	PRK Duracell	3/7	3/4	1020
<b>489o</b>	Commercial	Red	1/2	PRK Flint	3/1	1/2	1015
<b>17W</b>	Commercial	Red	1/2	PRK Flint	2/23	1/2	1070

# Bred Heifers



## Group D

**\$ 1500**

Number	Sire	Color	% Saler	Bred To	Due Date	Calf %	WT
<b>184Y</b>	MJB Gladiator	Black	1/2	PRK Flint	3/14	1/2	1090
<b>708G</b>	PRK Casino	Black	PB	SRS Forward	3/15	3/4	1045
<b>329o</b>	Commercial	Black	1/2	SRS Forward	3/16	1/2	1140
<b>468o</b>	Commercial	Black	1/2	SRS Forward	3/16	1/2	1135



## Group E

**\$ 1500**

Number	Sire	Color	% Saler	Bred To	Due Date	Calf %	WT
<b>634G</b>	MJB Gladiator	Black	1/2	SRS Guideline	3/20	1/2	1110
<b>516Y</b>	PRK Casino	Black	PB	PRK Duracell	3/30	3/4	1115
<b>016Y</b>	MAC Earthquake	Black	PB	PRK Duracell	3/31	3/4	1050



## Group F

**\$ 1450**

Number	Sire	Color	% Saler	Bred To	Due Date	Calf %	WT
<b>0886o</b>	Commercial	Red	1/2	PRK Flint	3/22	1/2	1075
<b>330Y</b>	SRS Bullseye	Red	5/8	PRK Duracell	4/1	5/8	1000
<b>506G</b>	PRK Casino	Red	PB	PRK Duracell	4/2	3/4	1030
<b>404Y</b>	SRS Cinch	Red	3/4	SRS Forward	4/9	5/8	1170



## Group G

**\$ 1500**

Number	Sire	Color	% Saler	Bred To	Due Date	Calf %	WT
<b>481G</b>	SRS Dundee	Black	1/2	PRK Flint	4/3	1/2	1090
<b>694Y</b>	SRS Dundee	Black	1/2	SRS Forward	4/3	1/2	1120
<b>540G</b>	PRK Cash	Black	1/2	PRK Flint	4/4	1/2	1140
<b>372Y</b>	PRK Captain	Black	1/2	SRS Forward	4/7	1/2	1170
<b>608G</b>	MAC Earthquake	Black	PB	SRS Forward	4/10	3/4	1060



## Bred Heifer Reference Service Sires

**PRK Duracell 252D**



CED	BW	WW	YW	MWW	Milk	Fat	REA	Marb.	Doc.	Stay.
+17.2	-1.9	+56	+94	+47	+19	-0.03	+0.53	+0.4	+18	+9

**SRS Guideline 7126G**



CED	BW	WW	YW	MWW	Milk	Fat	REA	Marb.	Doc.	Stay.
+17.3	-2.6	+61	+87	+49	+19	-0.04	+0.53	+0.4	+20	+15

## New Parke Ranch Herd Sires

**PRK Gametime 160G**



**Optimizer**

CED	BW	WW	YW	MWW	Milk	Fat	REA	Marb.	Doc.	Stay.
+11.9	-0.1	+58	+86	+49	+20	-0.04	+0.42	+0.4	+14	+17

**SRS General 4180G**



**Optimizer**

CED	BW	WW	YW	MWW	Milk	Fat	REA	Marb.	Doc.	Stay.
+12.2	+1.3	+71	+105	+54	+18	-0.03	+0.60	+0.4	+5	+15

**PRK Gunslinger 538G**



**Optimizer**

CED	BW	WW	YW	MWW	Milk	Fat	REA	Marb.	Doc.	Stay.
+8.2	+1.3	+65	+97	+48	+16	-0.05	+0.68	+0.3	-2	+12

**PRK GPS 728G**



**Enhancer**

CED	BW	WW	YW	MWW	Milk	Fat	REA	Marb.	Doc.	Stay.
+17.1	-1.8	+53	+77	+47	+21	-0.04	+0.59	+0.3	+20	+10









**Parke Ranch**  
**Eaf & Tiffany Parke**  
**7 Peppergrass Lane**  
**Drummond, MT 59832**

**Parke Ranch**

**Maternal Power**

**Production Sale**

**December 7th thru 15th, 2020**

**Drummond, Montana**



**We Believe In....**

**Will Represent Honestly....**

**And Stand Behind Our Cattle!**

*Eaf & Tiffany Parke Family*