

# 2021 Parke Ranch

## Maternal Power Production Sale

**Silent Auction Format**

**Dec. 7th thru 15th, 2021**

**At the Ranch**

**Drummond, Montana**



**90 Head Sell**  
**55 Bulls**  
**35 Bred Heifers**

**Lot #46**



[parkeranch@gmail.com](mailto:parkeranch@gmail.com)

[www.parkeranch.com](http://www.parkeranch.com)

406-288-3573 or 406-240-4167



# 2021

## Maternal Power Production Sale

### Salers, Simmental & Angus Genetics

## Silent Auction Format

December 7th thru 15th

At the Ranch - Drummond, Mt

90 Head Sell

55 Bulls

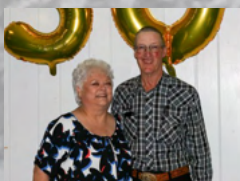
35 Bred Heifers

Our family welcomes you to our 6th annual Maternal Power Production Sale. We will be offering 55 bulls from the top 1/3 of our male calf crop and again have 35 bred heifers from our replacement group in the sale. All of these cattle have been bred for generations with a focus on balanced, maternal, and profitable genetics for the commercial cattleman. We continue to sort our cow herd very strictly for fertility, performance, phenotype, disposition, structure, udder quality, and efficiency. We are very excited about the quality and depth of the sale offering this year and feel that there is tremendous value in the Parke Ranch genetics we have developed over the past 2 plus decades. We are very grateful for you taking time to evaluate the cattle offered in this year's sale. We welcome any questions you might have and will do our best to help you find the genetics that can help you with the specific goals and objectives of your program.

The cattle will be offered in a silent auction format running over a 9 day sale period. We are aware this is a unique sale process, but feel it is a low pressure and flexible way for you to purchase the genetics that will fit your selection and budget criteria. We have received positive feedback on the sale format from past customers. We are happy to answer any questions you might have regarding the sale procedure and how the bid off process will work. We hope the timing and length of the sale will allow you to come and view the sale offering and cow herd at your convenience. This will allow us to visit about your needs and answer any questions you might have. If you are unable to come to the ranch we will have a video of the individual bulls and the heifer groups available for viewing through a link on our website prior to Dec. 1st. We will always do our best to honestly represent the cattle.

It seems like every year we say it has been an interesting and challenging one and 2021 is certainly no different. We hope that if you were in one of the extreme drought areas that you are receiving some needed moisture this fall! We will all certainly hope for better moisture and less expensive feed in 2022! It certainly has increased the importance of fertility and efficiency in our cow herds. We are very grateful for the strength of Salers cattle in these areas and the added benefits gained from crossbreeding.

Our family has had an eventful and blessed year! Last December Melanie & Monson Wadsworth were married. They have been ranching in the Paradise Valley just north of Yellowstone Park since last April. Joseph & Aubrey continue to live next to us and work full time on the ranch. In June they had a new son, Jackson, join their family and older sister, Jaycie. Spencer continues to study Ag at BYU-Idaho. He spent the summer at home helping on the ranch and we are very excited that just after Christmas he will be marrying Alita Monsen! Deana graduated high school in May and is now in Rexburg, ID along with Spencer. She is studying business and makes it home to visit frequently. Scott is a sophomore now and is involved in enough activities to keep us busy following him from the cross country course, to the court, to the track.



*The Parke Family*

# Parke Ranch

## **Sale Procedure:**

- \* Cattle will sell in a silent auction format with bidding opening at noon on Tuesday Dec. 7th, 2021.
- \* Bulls have a starting base price which is listed in the catalog (\$2,500, \$3,000, & \$3,500). Bred Heifers will sell in small groups with a starting base price on a per head basis.
- \* Bidders may place a bid at base price on any lot without a bid or raise the bid by a minimum of \$100 on any bull or \$25 on any heifer lots with a current bid. Bidding will be open until the sale closes on Wednesday Dec. 15th at 2 pm (Mountain Time).
- \* Bids may be placed with Eaf or Joseph via phone, text, email, or in person at any time during the sale period.
- \* Any lots receiving an increasing bid on Wednesday Dec. 15th may have an oral bid off at the close of the sale. This would involve the last bidder prior to the 15th and any bidders on the 15th, if they wish to continue bidding. Bid offs will be handled in order of price and as quickly as the contending bidders can be reached after 2 pm.
- \* Any lots without a bid during the 15th are considered sold to the high bidder when the sale closes at 2 pm on the 15th.
- \* Any lots without a base bid will be available for sale at the base price at the conclusion of the sale on a first come basis.
- \* We would encourage bidding early in the sale period to reduce the number of bid offs and to allow you to move to other lots.
- \* A spreadsheet will be updated frequently with current bids on our website at [www.parkeranch.com](http://www.parkeranch.com) or you may request update notifications if your bidding status changes.

## **Sale Terms and Details:**

- \* Females need to be picked up by the buyers by Dec. 31st.
- \* 1/2 of purchase price is due at sales conclusion with the balance due at delivery.
- \* Bulls will be fed free of charge and at our risk until delivery, beginning around March 20th.
- \* Bulls will be delivered free of charge up to 500 miles with any additional mileage at cost.
- \* All bulls are guaranteed for disposition, structural soundness, and fertility for the first breeding season.
- \* We will notify you as soon as possible if any bulls are injured in our care or do not pass the semen test. You may select a replacement bull if one is available, future credit, or receive a refund of your initial payment.
- \* Parke Ranch is retaining 1/3 semen interest on all sale bulls and will collect semen before delivery, at our cost, on any we desire to use in our AI program. You have full salvage value.
- \* A volume discount of 5% will be given on any purchase of 5 or more bulls.

## **Bull History & Development:**

- \* Bulls had actual birthweights taken with a scale at birth.
- \* They have been raised without creep. Just milk and grass.
- \* Sale bulls are from the top 32% of our male calves. They were sorted many times based on dam quality, birthweight, disposition, confirmation, performance, and soundness.
- \* Bulls were weaned on October 5th and are being fed free choice long stem mixed hay and 6 lbs of bull challenger pellets.
- \* They will be fed for a 2.8 lbs/day gain to grow them out sufficiently while ensuring their soundness and longevity.
- \* Bulls will be semen tested and vaccinated in March and be ready for turn out when delivered.
- \* Fall vaccinations included: Vision 8, Pyramid 5, Autogenous Type A, Autogenous Respiratory, Multi-Min, and Footrot. Spring vaccinations: Vision 8, Pyramid 5, Reprostar VL5 HB, & Footrot.

## **Catalog Details:**

- \* All double black bulls were DNA tested for coat color and those found to be homozygous black are designated in catalog.
- \* Lot base prices are found in the upper right hand corner.
- \* Dams average on calves birthweights and weaning indexes are listed along with her udder score (the first digit represents her udder suspension and the second digit is teat size, with 9 being the best and 1 the worst).
- \* The listed EPD's are from the American Salers Association.
- \* Potential Heifer bulls are ranked.(4\* being the most reliable)

## **Cattle Inspection:**

- \* Cattle are available for inspection at any time now or during the sale period. If you desire to call ahead we can make accommodations to improve your viewing experience.
- \* Have lunch on us. Plan a little extra time when you come to look at cattle and have a famous Parkers Hamburger on us at the restaurant in Drummond (they are closed Sun. & Mon.).
- \* Exit interstate 90 at Drummond and head south on Hwy #1. After 2.6 miles turn east on Mullan Road and then travel 1.5 miles and our ranch is on the left.

## **Additional Information:**

- \* A link to a video of the individual bulls and heifer groups will be up on our website before Dec. 1st.
- \* We will have updated weights and scrotal measurements on all sale bulls at the start of the sale. These will be available on our website or when you come to view the cattle.

## **New at Parke Ranch:**

- \* We have expanded our offering this year of our Enhancer bulls. These are a 3 way cross of Salers X Angus X Simmental. Please see page 21 for more details and a further explanation.

**Eaf's Cell: 406-240-4167**

**Home: 406-288-3573**

**Joseph's Cell: 406-396-0369**

**Email: [parkeranch@gmail.com](mailto:parkeranch@gmail.com)**

**Web page: [www.parkeranch.com](http://www.parkeranch.com)**

**We Believe In.... Will Represent Honestly.... And Stand Behind our Cattle!**

## Reference Sires

**Hom Black**      **SRS General 4180G**      2/4/19  
**Polled**              **50% Salers 50% Angus**      **#732124**

Connealy Greeley (AN)      Connealy Confidence 0100  
 Precious of Conanga  
**SRS Dynasty 667D**  
 SRS Finicky 0838U \*      CRO Survey 615S  
 SRS Finicky 9809H \*  
 SRS Gunslinger 605Z (AN)      Tombstone 050  
 Basin JoyceS474  
**SRS Juliet 4180B**  
 SRS Juliet 0218M      SRS Focus 9403F  
 SRS Juliet 9505E

CED	BW	WW	YW	MWW	Milk	Fat	REA	Marb.	Doc.	Stay.
+12.0	+1.5	+76	+112	+52	+14	-0.03	+0.64	+0.4	+1	+18



**Semen Available**

**Black**              **SRS Guideline 7126G**      2/1/19  
**Polled**              **50% Salers 50% Angus**      **#732117**

SRS Benchmark 8105B      SRS Zues 0509Z  
 SRS Shannon 8105U \*  
**SRS Element 4154E**  
 SRS Morgan 4154B      PRK Yellowstone 966Y  
 SRS Morgan 0938W \*  
 SRS Bottom Line 978B      Soo Line Motive 9016 (AN)  
 SRS Juliet 0584R  
**SRS Lace 7126E**  
 SRS Lace 3179A      SRS Unreal 0151U  
 SRS Lace 8114U \*

CED	BW	WW	YW	MWW	Milk	Fat	REA	Marb.	Doc.	Stay.
+11.3	-4.1	+56	+79	+50	+22	-0.04	+0.48	+0.4	+21	+15



**Semen Available**

**Hom Black**      **MJB Velocity 414E**      2/2/17  
**Hom Polled**      **50% Salers 37.5% AN 12.5% RA**      **#716159**

Keys Direct Fire 18Y      5L Direct Fire 1641-6443 (RA)  
 Miss Key Ruby 133W  
**Keys Retribution 18B**  
 Miss Key Kristin 57Y      Keys Matrix 99T  
 Miss Key Kristin 95U  
 MAC Quarterback 58Y      MAC F1 Sundance 4S  
 WJM Wilma 120W  
**MJB Mary 134C**  
 MJB Yellow Rose 138Z      TSB Tulsa 82W  
 Miss W Masterpiece 122H

CED	BW	WW	YW	MWW	Milk	Fat	REA	Marb.	Doc.	Stay.
+11.2	-1.1	+55	+85	+37	+10	-0.03	+0.86	+0.6	+16	+20



**MJB Velocity 414E**

**Black**              **MAC Frontier 184F**      2/20/18  
**Hom. Polled**      **Purebred Salers**      **#727882**

MAC Union Station 87U      Big Sky Triton 40R  
 MAC Sheila 208S \*  
**MAC Decade 140D**  
 MAC Zoe 503Z      MAC Centurion 240X  
 MAC Valene 236X  
 MAC Torrington 139T      MAC Navigator 281N  
 JMAC Lolita 2L  
**MAC Yorann 258Y**  
 MAC Royann 100R      JMAC Granite 5G  
 MAC Miss Fosston 240F

CED	BW	WW	YW	MWW	Milk	Fat	REA	Marb.	Doc.	Stay.
+12	-0.2	+55	+76	+46	+19	-0.11	+0.89	+0.4	+12	+17

**Hom Black**      **GGT Final Choice 119B**      1/7/14  
**Hom. Polled**      **62.5% Salers 37.5% Angus**      **#695914**

GGT P Heavy Duty 100J      GGT P BLK Design 51D  
 GGT MS P BLK Dusty 105E  
**GGT P BLK Heavy Hitter**  
 GGT P Harrah 195K      MAC Gunsmoke 118G  
 GGT Jewel 285S  
 S A V Final Answer 0035(AN)      SITZ Traveler 8180  
 S A V Emulous 8145  
**GGT MS Finality 139Y \***  
 GRNO New Design 260P  
 GGT Designer 222W      GGT P Charisma 315K

CED	BW	WW	YW	MWW	Milk	Fat	REA	Marb.	Doc.	Stay.
+18.1	-5.0	+65	+88	+45	+13	-0.07	+0.75	+0.2	+12	+19



# Reference Sires

**Black**      **PRK Gametime 160G**      2/23/19

**Polled**      **50% Salers 37.5% AN 12.5% RA**      #730912

Connealy Big Time 1251 (AN)      Connealy Consensus  
Breeta of Conanga

**SRS Entity 4108E**

SRS Columbia 4108B      LYZS Rowdy 28R  
SRS Columbia 0530R \*

PRK Tonka 298T      SRS Nokia 9722N  
PRK Virginia 298M (RA)

**PRK Flicka 160Y \***

PRK Flicka 959W      SRS Sequel 0122S  
PRK Flicka 649S

CED	BW	WW	YW	MWW	Milk	Fat	REA	Marb.	Doc.	Stay.
+11.8	+0.6	+66	+97	+53	+20	-0.04	+0.47	+0.4	+11	+18

## PRK Gametime 160G



**Hom Black**      **MAC F1 Enduro 43E**      2/4/17

**Hom Polled**      **50% Salers 50% Angus**      #720903

Connealy Consensus 7229      Connealy Consensus  
Blue Lilly of Conanga 16

**Connealy Comrade 1385 (AN)**

Happy Gee of Conanga      GAR New Design 5050  
Hap Gina of Conanga 260

S Nebraska 330N      D Limited Edition 179L  
S Black Lady 50K

**MAC Carina 176C**

MAC Willow 134W      MAC Lennox 314L  
MAC Kesia 322K

CED	BW	WW	YW	MWW	Milk	Fat	REA	Marb.	Doc.	Stay.
+15.6	-0.1	+72	+113	+58	+22	-0.02	+0.67	+0.6	+9	+16

## MAC F1 Enduro 43E



**Red**      **PRK Fenway 384F**      2/25/18

**Hom Polled**      **50% Salers 25% RA 25% AN**      #724583

C-Bar Evolution 107Y (RA)      TR Colt 45 UT806  
LGS Abby 689S

**DJF Border Line 815A**

STCY Unity 815U \*      S Nebraska 330N  
STCY Natalie 315N

SRS WDA 270W      S A V 004 Density 4336 (AN)  
SRS Footloose 9927J

**PRK Lass 384A \***

PRK Lass 184Y      SRS United 0653U  
PRK Lass 864U

CED	BW	WW	YW	MWW	Milk	Fat	REA	Marb.	Doc.	Stay.
+13.7	+0.0	+65	+102	+47	+14	-0.03	+0.55	+0.3	+21	+16

## PRK Fenway 384F



**Hom Black**      **MJB Gladiator 305B**      2/2/14

**Polled/SC**      **50% Salers**      #694609

SRS Xtra 0347X      SRS Uprising 0059U  
SRS Norah 0347N \*

**SRS Spartacus 0670Z**

SRS Seiko 0670S      SRS Nevada 9378N  
SRS Priceless 0447P

MJB Barbwire 260S      W Power Boss 203P  
MS W Independence

**MJB Barbie 126Z \***

MJB Morgiana 102S      Morgans Direction 111 9901  
MJB Puma 103P

CED	BW	WW	YW	MWW	Milk	Fat	REA	Marb.	Doc.	Stay.
+12.9	+1.1	+72	+96	+50	+14	-0.04	+0.72	+0.3	+8	+19

**Hom Black**      **PRK Fullback 280F**      3/2/18

**Hom Polled**      **50% Salers 37.5% AN 12.5% RA**      #724622

MAC Quarterback 58Y      MAC F1 Sundance 4S  
WJM Wilma 120W

**MJB Elway 322C**

MJB Yellow Rose 156Z \*      TSB Tulsa 82W  
Mis 92F Masterpiece

SRS Xpert 0881X      SRS Patent 0221P  
SRS Priceless 0881U \*

**PRK Rosebud 280Z**

PRK Rosebud 070X      PRK Tonka 298T  
PRK Rosebud 870U

CED	BW	WW	YW	MWW	Milk	Fat	REA	Marb.	Doc.	Stay.
+11.4	+0.6	+70	+100	+53	+18	-0.05	+0.62	+0.5	+20	+20



## Reference Sires

**Hom Black**      **TFS Due North 2659Z**      1/19/12

**Hom Polled**      **62.5% Simm      37.5% AN      #744049**

Nichols Legacy G151      Nichols BLK Destiny D12  
Nichols Debra D81

**Hook's Shear Force 38K**

C&D Tracy      Circle S Leachman 600U  
Betsy

Mytty In Focus      S A F Focus of E R  
Mytty Countess 906

**TFS 1/4 SM 3/4 AN 8419T**

TFS Good As Gold 0056K      Boyd Beef Maker 3069  
Bonina Goldenglow 0056K

CED	BW	WW	YW	MWW	Milk	Fat	REA	Marb.	Doc.	Stay.
+15.0	-1.4	+74	+117	+57	+20	+0.01	+0.63	+0.5	+16	+18

**TFS Due North 2659Z**



**Hom Black**      **PRK GPS 728G**      2/11/19

**Polled      50% An 37.5% Salers 12.5% Simm      #730893**

Connealy Confidence 0100      Connealy Tobin  
Becka Gala of Conanga 8281

**MSR Tenacity 3733A**

MSR 1206Y of 9325W SBET      Dikemans Sure Bet  
MSR 9325W of 2094 VOY

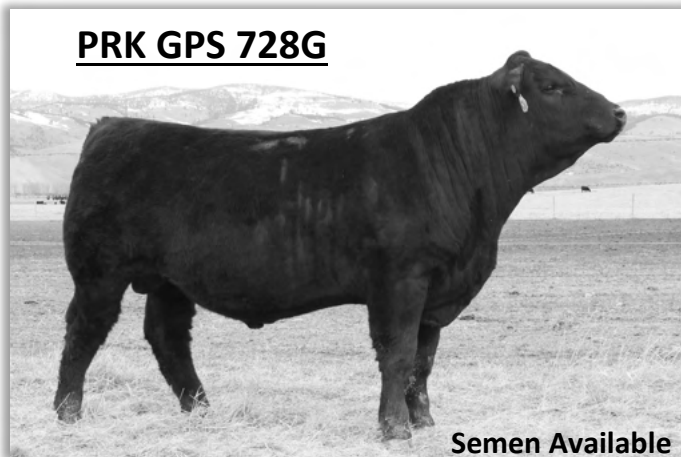
SRS Bullseye 592B      SOO Line Motive 9016  
SRS Juliet 0584R

**PRK Hickory 728E**

PRK Hickory 418B      OPP Saber 847U  
PRK Hickory 823U

CED	BW	WW	YW	MWW	Milk	Fat	REA	Marb.	Doc.	Stay.
+13.6	+0.1	+62	+89	+52	+21	-0.01	+0.66	+0.3	+14	+12

**PRK GPS 728G**



**Hom Black**      **Hook's Eagle 6E**      1/22/17

**Hom Polled      75% Simm      25% AN      #730666**

Hook's Xavier 14X      MCC Daybreak  
Hook's Patti 3P

**Hook's Black Hawk 50B**

Hook's Yvette 100Y      Hook's Quest 86U  
Hook's Savannah 14S

GW-WBF Substance 820Y      GW Premium Beef 021TS  
GW Miss Maternal 558P

**Hook's Crystal 1C**

Hook's Underestimated 6U      Triple C Invasion R47K  
Hook's Promenade 14-P

CED	BW	WW	YW	MWW	Milk	Fat	REA	Marb.	Doc.	Stay.
+13.9	-1.9	+103	+163	+76	+25	-0.04	+1.30	+0.6	+21	+18

**Hook's Eagle 6E**



**Black**      **Hook's Full Figures 11F**      1/21/18

**Hom Polled      75.0% Simm      25.0% AN      #744052**

MAR Innovation 251      Connealy Impression  
MAR Final Kahuna 856

**TJ Diplomat 294D**

TJ 33Y      RCR Stetson T17  
MS Miss 306R

Hook's Shear Force 38K      Nichols Legacy G151  
C&D Tracy

**Hook's Docila 23D**

Hook's Yonkers 21Y      Hook's Infiniti 10U  
Hook's Unity 2U

CED	BW	WW	YW	MWW	Milk	Fat	REA	Marb.	Doc.	Stay.
+14.2	-1.9	+84	+138	+71	+29	-0.03	+1.28	+0.6	+15	+18

**Hook's Full Figures 11F**





# Optimizers



## PRK Jabari 272J \$3500

Hom Black		Polled		50.0% SA		#744299	
Born	BW	205 Wt	Index	11/12 Wt	WDA	Frame	
3/10/21	100 lbs	828 lbs	118	954 lbs	3.86 lbs	6.5	

SRS Dynasty 667D	Connealy Greeley	<b>Dam's Production</b>	
<b>SRS General 4180G</b>	SRS Finicky 0838U *	BW	8 @ 91
SRS Juliet 4180B	SRS Gunslinger 605Z	WW	7 @ 106
SRS Xtra 0347X	SRS Juliet 0218M	Udder	8 - 8
<b>PRK Unity 272Z</b>	SRS Uprising 0059U		
PRK Unity 892U	SRS Norah 0347N *		
	SRS Nokia 9722N		
	9792 SA/AN		

CED	BW	WW	YW	MWW	Milk	Marb.	REA	Doc.	Stay.
+12.3	+1.6	+74	+105	+56	+19	+0.4	+0.67	+3	+16

\* Jabari is a big, powerful, well made bull that will add a lot of performance to his black calves.  
 \* He is a great option for use on cows in either a terminal cross situation or for producing great females.  
 \* His dam is a proven female with no holes who raises a top calf every year. Very long bodied and good uddered cow.



## PRK Jump 481J \$3500

Hom Black		Polled		50.0% SA		#744316	
Born	BW	205 Wt	Index	11/12 Wt	WDA	Frame	
3/8/21	92 lbs	685 lbs	98	856 lbs	3.44 lbs	5.8	

SRS Dynasty 667D	Connealy Greeley	<b>Dam's Production</b>	
<b>SRS General 4180G</b>	SRS Finicky 0838U *	BW	6 @ 86
SRS Juliet 4180B	SRS Gunslinger 605Z	WW	6 @ 97
SRS Zeus 0509Z	SRS Juliet 0218M	Udder	8 - 7
<b>PRK Gina 481B</b>	Sitz Uncommon		
PRK Gina 081X	PRK Miss Montana 503R *		
	PRK Unreal 0151U		
	PRK Gina 9713G		

CED	BW	WW	YW	MWW	Milk	Marb.	REA	Doc.	Stay.
+13.4	-0.5	+59	+84	+45	+16	+0.4	+0.51	+2	+18

\* Quad Polled  
 \* This bull is a very stylish and clean made bull with great thickness and length.  
 \* The dam of Jump is a moderate framed female with lots of depth of body.  
 \* We are really liking our first set of SRS General calves.



### Value to be Found

We would encourage you to look through all of the bulls in the sale as often there is great quality to be found in the lower price groups. This year we feel that the bulls are even more closely grouped in quality from the top to bottom. We had to make these price group decisions more than a month before the sale begins and some of these bulls change pretty rapidly after starting on feed. Your priorities and preferences may also differ from our opinion and judgement.



## PRK Journey 557J \$3500

Black		Polled		50.0% SA		#744325	
Born	BW	205 Wt	Index	11/12 Wt	WDA	Frame	
3/7/21	95 lbs	722 lbs	103	838 lbs	3.35 lbs	5.5	

SRS Dynasty 667D	Connealy Greeley	<b>Dam's Production</b>	
<b>SRS General 4180G</b>	SRS Finicky 0838U *	BW	5 @ 87
SRS Juliet 4180B	SRS Gunslinger 605Z (AN)	WW	5 @ 105
SRS Xtra 0347X	SRS Juliet 0218M	Udder	8 - 8
<b>PRK Annie 557C *</b>	SRS Uprising 0059U		
PRK Annie 557R	SRS Norah 0347N *		
	Legend's Free Enterprise		
	PRK Annie 395N (RA)		

CED	BW	WW	YW	MWW	Milk	Marb.	REA	Doc.	Stay.
+13.4	+0.1	+64	+95	+47	+15	+0.4	+0.49	+18	+19

\* Quad Polled  
 \* Journey is another long bodied General son who demonstrates some of his sires massive volume and rib shape.  
 \* His mother has earned Gold Dam recognition and is a good milking and thick made female. All of her calves have been kept as replacements or made the bull sale.





# Optimizers

## 4 PRK Jubilee 615J \$3500

Hom Black		Polled		62.5% SA		#744334
Born	BW	205 Wt	Index	11/12 Wt	WDA	Frame
3/21/21	80 lbs	782 lbs	112	860 lbs	3.64 lbs	6.2

SRS Dynasty 667D <b>SRS General 4180G</b> SRS Juliet 4180B	Connealy Greeley SRS Finicky 0838U * SRS Gunslinger 605Z SRS Juliet 0218M	<b>Dam's Production</b>
MAC F1 Humboldt 312Z <b>PRK Highlight 615D</b> PRK Highlight 409B	Werner War Party 2417 Mac BLK Melody 243M Keys Zodiac 20Z PRK Highlight 109Y	BW 4 @ 79 WW 4 @ 110 Udder 6 - 8

CED	BW	WW	YW	MWW	Milk	Marb.	REA	Doc.	Stay.
+14.9	-2.0	+66	+95	+53	+20	+0.5	+0.67	+11	+18

### \* \* \* Potential Heifer Bull

\* Jubilee has tremendous spread from birth to weaning with an impressive set of balanced EPD's.

\* His maternal brother was a top seller in our 2020 Sale to Bruce Thurgood and a bull we are using AI in our program.

\* His long, deep bodied and heavy milking dam has tremendous performance. Her 4 calves have all been keepers.

## 5 PRK Juke Box 895J \$3000

Hom Black		Polled		50.0% SA		#744392
Born	BW	205 Wt	Index	11/12 Wt	WDA	Frame
2/28/21	96 lbs	721 lbs	103	862 lbs	3.35 lbs	6.4

SRS Dynasty 667D <b>SRS General 4180G</b> SRS Juliet 4180B SRS Ariat 270A	Connealy Greeley SRS Finicky 0838U * SRS Gunslinger 605Z SRS Juliet 0218M	<b>Dam's Production</b>
<b>PRK Gina 895F</b> PRK Cinderella 595C	Tombstone 050 SRS Footloose 9927J SRS Yahtzee 996Y PRK Gina 423P	BW 2 @ 87 WW 2 @ 103 Udder 9 - 8

CED	BW	WW	YW	MWW	Milk	Marb.	REA	Doc.	Stay.
+11.1	+1.3	+69	+103	+50	+16	+0.3	+0.59	+1	+16

### \* Quad Polled

\* Here is another General son who possesses great length of body coupled with very good performance.

\* This bulls dam is a very attractive young female whose first calf is a top heifer in our replacement group. She has a very nicely designed udder with good milk.



March 2021



Lot 4's Maternal Brother - PRK Hercules

## 6 PRK Jet Pack 1516J \$3500

Hom Black		Scurred		50.0% SA		#744319
Born	BW	205 Wt	Index	11/12 Wt	WDA	Frame
3/5/21	104 lbs	760 lbs	109	914 lbs	3.63 lbs	6.4

SRS Dynasty 667D <b>SRS General 4180G</b> SRS Juliet 4180B	Connealy Greeley SRS Finicky 0838U * SRS Gunslinger 605Z SRS Juliet 0218M	<b>Dam's Production</b>
PRK Ace 081A <b>PRK Lady 1516C *</b> PRK Lady 886U	PRK Yellowstone 966Y PRK Gina 081X SRS Policy 9336P PRK Lady 466P	BW 5 @ 89 WW 5 @ 107 Udder 9 - 9

CED	BW	WW	YW	MWW	Milk	Marb.	REA	Doc.	Stay.
+11.6	+1.3	+67	+94	+53	+20	+0.4	+0.55	+15	+18

### \* Quad Polled

\* A bigger framed bull that is very clean in his design and would work great on a smaller set of English cows. I am not concerned about any calving issues if used on cows.

\* His gold dam's 5 calves have all been retained. She is a very feminine, long made female who has an excellent udder. Her other bull calf was a top bull in our 2017 Production Sale.



Lot 6's Dam and Maternal Brother

Sept. 2017

# Optimizers



## PRK Jabba 264J \$3500

Black		Polled		50.0% SA		#744297	
Born	BW	205 Wt	Index	11/12 Wt	WDA	Frame	
3/6/21	103 lbs	727 lbs	104	900 lbs	3.59 lbs	6.1	

Keys Retribution 18B  
**MJB Velocity 414E**  
 MJB Mary 134C  
 SRS Xtra 0347X  
**PRK Holly 264Z**  
 PRK Holly 464P \*

Keys Direct Fire 18Y  
 Miss Key Kristin 57Y  
 MAC Quarterback 58Y  
 MJB Yellow Rose 138Z  
 SRS Uprising 0059U  
 SRS Norah 0347N \*  
 SRS Marksman 0059M  
 PRK Holly

Dam's Production	
BW	8 @ 92
WW	8 @ 103
Udder	6 - 7

CED	BW	WW	YW	MWW	Milk	Marb.	REA	Doc.	Stay.
+11.5	+0.1	+59	+88	+45	+16	+0.5	+0.64	+8	+20

\* Quad Polled  
 \* Jabba is a bull possessing a great deal of thickness across his top and through his rear quarter.  
 \* His dam is a very thick made female with lots of volume and depth of rib.  
 \* We used Velocity in our AI program to add some outcross genetics. His calves are deep bodied and thick.



**Lot #7**



## PRK Jaguar 378J \$3500

Hom Black		Scurred		50.0% SA		#744309	
Born	BW	205 Wt	Index	11/12 Wt	WDA	Frame	
2/27/21	95 lbs	736 lbs	105	908 lbs	3.52 lbs	6.0	

Keys Retribution 18B  
**MJB Velocity 414E**  
 MJB Mary 134C  
 SRS Unreal 0151U  
**PRK Suzanne 378A**  
 PRK Suzanne 182Y

Keys Direct Fire 18Y  
 Miss Key Kristin 57Y  
 MAC Quarterback 58Y  
 MJB Yellow Rose 138Z  
 SRS Marksman 0059M  
 SRS Lynn 0151L  
 SRS Uprising 0059U  
 PRK Suzanne 782T

Dam's Production	
BW	7 @ 93
WW	7 @ 100
Udder	6 - 7

CED	BW	WW	YW	MWW	Milk	Marb.	REA	Doc.	Stay.
+9.7	+0.2	+58	+84	+42	+13	+0.5	+0.67	+14	+17

\* Jaguar is a bull that has been a stand out all summer. A Nice patterned bull who carries a lot of thickness down his top and into his rear quarter with a powerful hip.  
 \* His dam is extremely long bodied and yet is a very deep and big volumed female.



**Lot #8**



## PRK Justice 950J \$3500

Hom Black		Polled		50.0% SA		#744415	
Born	BW	205 Wt	Index	11/12 Wt	WDA	Frame	
2/22/21	98 lbs	747 lbs	107	862 lbs	3.28 lbs	6.0	

Keys Retribution 18B  
**MJB Velocity 414E**  
 MJB Mary 134C  
 MJB Gladiator 305B  
**PRK Rosebud 950G**  
 PRK Rosebud 650D

Keys Direct Fire 18Y  
 Miss Key Kristin 57Y  
 MAC Quarterback 58Y  
 MJB Yellow Rose 138Z  
 SRS Spartacus 0670Z  
 MJB Barbie 126Z \*  
 SRS United 0653U  
 PRK Rosebud 480B

Dam's Production	
BW	1 @ 98
WW	1 @ 107
Udder	8 - 8

CED	BW	WW	YW	MWW	Milk	Marb.	REA	Doc.	Stay.
+13.0	-0.3	+59	+86	+43	+13	+0.5	+0.72	+16	+21

\* Quad Polled  
 \* Justice is a very balanced and attractively made Velocity son. He offers an outcross pedigree to our long time customers.  
 \* His 2 year old dam is a feminine female with great length who did a super job with her first calf.



**Lot #9**



# Apples & Oranges – Food for Thought

Here at Parke Ranch we believe in honest, accurate, objective, and complete data collection and reporting. This is the beginning point of any valuable analysis or decision making which uses weights, indexes, or EPD. One of these times of data collection is at an animal's birth. We weigh each calf with a digital scale within 24 hours of their birth. Several years back I conducted my own experiment by both weighing and using a tape to measure and estimate birth weight for every calf born that year. I found the tape measuring method to be very subjective depending on who was measuring, where the tape was placed, how tight it was pulled, or the composition of the calf. We found a correlation between the two methods of measuring birth weight, but definitely found that the heavier calves were several pounds lighter using the taping method when compared to the actual scale weight. Because of this experience we have decided to weigh each calf with a scale. We recognize that many producers for various reasons use other methods. If comparing birth weights between animals from different producers, it might be of value to make sure you are comparing apples to apples.

Birth weights are also significantly impacted by several factors other than just genetics. Environment and producer practices also have a large effect on a calf's actual birth weight. The weather conditions (temperature) play a role in the size of the developing fetus. Calves with the same genetic make-up will weigh more at birth in the colder climates of the North when compared to those born in the Mid-West or the South. Birth weights are also lower in those calves born in the Fall compared to late Winter or Spring. The body condition, size and age of the dam during fetal growth will impact the birth weight as well. The length of gestation can be impacted by several variables and play's a role in a calf's weight at birth. These factors and others are important to consider if we are comparing weights between different herds and environments. Make sure you aren't comparing apples to oranges!



It is true that for many years birth weight was maybe the only performance indicator we had to use in predicting calving difficulty of offspring. Over the last couple of decades however we have developed other indicators that are more reliable when attempting to predict calving ease. The EPD for birth weight uses calculations that remove the variables caused by environment, producer differences, or even methods of weighing. (This is also true of the other EPD figures) Because of these reasons we would encourage you, if birth weight is an area of concern in your selection process, to utilize the BW EPD rather than the actual birth weight when making comparisons between animals

(especially if they are from different herds).

If you are concerned about the calving ease of an animal's offspring, we would encourage you to focus less on the BW EPD and look more to the Calving Ease Direct EPD. Calving Ease Direct takes into account additional factors other than just birth weight which impact dystocia and calving difficulty. This EPD is expressed as a percentage of unassisted births from an animal's offspring. For example: if the CED EPD for bull A is +16.3 and bull B is +11.3 you could expect heifers bred to Bull A to have 5% more unassisted births than if the same heifers were bred to Bull B.

We recognize that the actual birth weights of the cattle at Parke Ranch are quite possibly higher than are listed in other operations. We believe that this is because of some of the reasons we have discussed above. We have used enough proven herd sires in our program that we have confidence in the accuracy and predictability of our Birth Weight EPD numbers. The reports we have received from past customers continue to validate this belief. Each year we analyze our actual birth weights and castrate any bulls who we have concern might not be safe for use on any mature cows. We also sell as feeders any heifer calves who have excessive birth weights. In an effort to share all of the information we have in helping you with your selection, we have listed the average actual birth weights of a dam's offspring. We have also designated in the cata-



log the bulls we feel confident may be suitable for use in breeding heifers. This year we scored these potential heifer bulls with a star system. The 4 star bulls are those that we are the most confident in for use on heifers and the 1 star bulls are those we feel would work on some larger heifers. We are always willing to answer any questions you may have regarding our program or any specific sale animal.



# Optimizers

## 10 PRK Junction 983J \$2500

Hom Black		Polled		50.0% SA		#744426	
Born	BW	205 Wt	Index	11/12 Wt	WDA	Frame	
2/18/21	89 lbs	713 lbs	102	874 lbs	3.27 lbs	5.3	

Keys Retribution 18B	Keys Direct Fire 18Y	<b>Dam's Production</b>	
<b>MJB Velocity 414E</b>	Miss Key Kristin 57Y	BW	1 @ 89
MJB Mary 134C	MAC Quarterback 58Y	WW	1 @ 102
MAC Blackjack 25B	MJB Yellow Rose 138Z	Udder	8 - 8
<b>PRK Pigeon 983G</b>	Coleman Regis 904		
PRK Pigeon 683D	MAC Zarissa 36Z *		
	SRS Bullseye 592B		
	PRK Pigeon 373A *		

CED	BW	WW	YW	MWW	Milk	Marb.	REA	Doc.	Stay.
+14.3	-1.5	+53	+78	+38	+11	+0.5	+0.64	+14	+17

\* Quad Polled

\* A bull that is moderate in his frame with good performance due to his length, tremendous volume and thickness. Another great option for an outcross pedigree.

\* His dam is a beautiful, moderate made 2 year old with lots of depth and tremendous udder volume.



**Lot #10**

## 11 PRK Jet 1513J \$3000

Hom Black		Polled		50.0% SA		#744318	
Born	BW	205 Wt	Index	11/12 Wt	WDA	Frame	
3/3/21	96 lbs	775 lbs	111	948 lbs	3.73 lbs	6.9	

Keys Retribution 18B	Keys Direct Fire 18Y	<b>Dam's Production</b>	
<b>MJB Velocity 414E</b>	Miss Key Kristin 57Y	BW	5 @ 91
MJB Mary 134C	MAC Quarterback 58Y	WW	5 @ 106
SRS Yatzee 996Y	MJB Yellow Rose 138Z	Udder	7 - 7
<b>PRK Honor 1513C *</b>	SRS Uprising 0059U		
PRK Honor 993W	SRS Kristy 0996W *		
	SRS Sequel 0122S		
	PRK Honor 345N		

CED	BW	WW	YW	MWW	Milk	Marb.	REA	Doc.	Stay.
+10.8	-0.1	+56	+84	+44	+16	+0.5	+0.73	+12	+18

\* Quad Polled

\* Jet is a bigger framed and longer made bull that demonstrates lots of power and performance.

\* His gold dam comes from a productive cow family with great longevity.

\* Velocity has been used in several herds and from reports is checking all of the boxes.



**Lot #12**

## 12 PRK Jazz 366J \$3500

Hom Black		Scurred		50.0% SA		#744307	
Born	BW	205 Wt	Index	11/12 Wt	WDA	Frame	
2/28/21	99 lbs	714 lbs	102	908 lbs	3.53 lbs	5.5	

SRS Element 4154E	SRS Benchmark 8105B	<b>Dam's Production</b>	
<b>SRS Guideline 7126G</b>	SRS Morgan 4154B	BW	7 @ 97
SRS Lace 7126E	SRS Bottom Line 978B	WW	7 @ 100
DJF Xclusive 498X	SRS Lace 3179A	Udder	8 - 8
<b>PRK Lady 366A</b>	B C Emblazon 854E		
PRK Lady 066X	DJF Paisley 498P		
	SRS United 0653U		
	PRK Lady 466P		

CED	BW	WW	YW	MWW	Milk	Marb.	REA	Doc.	Stay.
+8.2	+0.2	+60	+85	+49	+19	+0.4	+0.45	+13	+17

\* Quad Polled

\* Here is a bull you will admire for his thickness, balance, and style.

\* His dam possesses a great deal of thickness along with lots of volume and rib shape.

## 13 PRK Joe 845J \$3000

Hom Black		Polled		50.0% SA		#744380	
Born	BW	205 Wt	Index	11/12 Wt	WDA	Frame	
2/22/21	91 lbs	706 lbs	101	882 lbs	3.35 lbs	5.2	

SRS Element 4154E	SRS Benchmark 8105B	<b>Dam's Production</b>	
<b>SRS Guideline 7126G</b>	SRS Morgan 4154B	BW	2 @ 83
SRS Lace 7126E	SRS Bottom Line 978B	WW	2 @ 98
PRK Tonka 298T	SRS Lace 3179A	Udder	9 - 9
<b>PRK Ginger 845F</b>	SRS Nokia 9722N		
PRK Ginger 335A	PRK Virginia 298M		
	SRS WDA 270W		
	PRK Ginger 135Y		

CED	BW	WW	YW	MWW	Milk	Marb.	REA	Doc.	Stay.
10.7	-1.1	56	79	46	19	0.4	0.47	20	19

\* Quad Polled

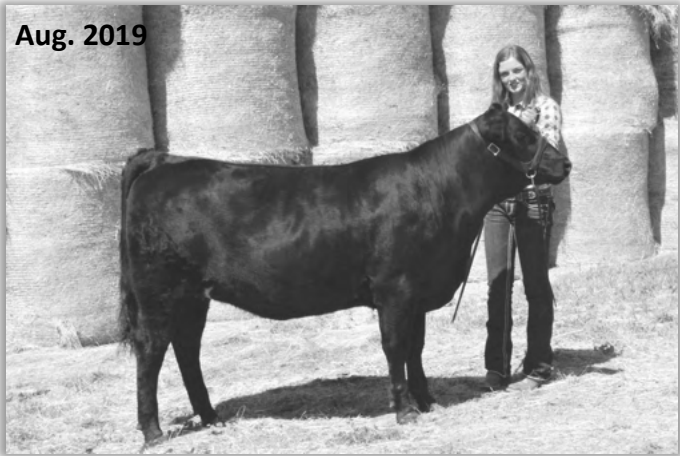
\* Joe is a bull that will add some depth and volume to his calf crop for sure.

\* The Ginger cow had a really nice replacement heifer on her first calf and is a good young female.



# Optimizers

Aug. 2019



**PRK Holly 854F - Dam of Lot #14**

14

**PRK Junior 854J**

**\$3000**

Black		Polled		50.0% SA		#744382	
Born	BW	205 Wt	Index	11/12 Wt	WDA	Frame	
3/12/21	70 lbs	689 lbs	98	800 lbs	3.27 lbs	5.2	

SRS Element 4154E <b>SRS Guideline 7126G</b> SRS Lace 7126E	SRS Benchmark 8105B SRS Morgan 4154B SRS Bottom Line 978B SRS Lace 3179A	<b>Dam's Production</b>
SRS Dundee 270D <b>PRK Holly 854F</b> PRK Holly 454B	Connealy Greeley SRS Finicky 0838U * SRS United 0653U PRK Holly 264Z	BW 2 @ 72 WW 2 @ 101 Udder 8 - 8

CED	BW	WW	YW	MWW	Milk	Marb.	REA	Doc.	Stay.
+15.1	-3.9	+53	+74	+49	+22	+0.4	+0.48	+22	+18

\*\*\* **Potential Heifer Bull - Quad Polled**  
 \* Junior should make a consistent heifer bull, yet he still has some muscle and shape to his phenotype.  
 \* His dam is a well made and attractive female who is part of Deana's 4-H cow family. Last year's bull sold in our sale as a heifer bull. Pedigree goes back to Lot #7's dam.

15

**PRK Jeopardy 949J**

**\$3500**

Black		Polled		50.0% SA		#744414	
Born	BW	205 Wt	Index	11/12 Wt	WDA	Frame	
3/9/21	77 lbs	684 lbs	98	780 lbs	3.15 lbs	5.6	

SRS Element 4154E <b>SRS Guideline 7126G</b> SRS Lace 7126E	SRS Benchmark 8105B SRS Morgan 4154B SRS Bottom Line 978B SRS Lace 3179A	<b>Dam's Production</b>
SRS Entity 4108E <b>PRK Kit 949G</b> PRK Kit 499B *	Connealy Big Time 1251 SRS Columbia 4108B SRS United 0653U PRK Kit 999W *	BW 1 @ 77 WW 1 @ 98 Udder 8 - 8

CED	BW	WW	YW	MWW	Milk	Marb.	REA	Doc.	Stay.
+13.6	-3.0	+55	+80	+48	+21	+0.4	+0.43	+20	+17

\*\*\* **Potential Heifer Bull - Quad Polled**  
 \* Jeopardy shouldn't have any risks as a heifer bull. A bull with a nice design and profile and good length.  
 \* His young dam comes from a very good cow family with 2 gold dams and a big presence in our herd.  
 \* Guideline was our pick for a heifer bull in Skinner's 2020 production sale. His first 42 calves averaged 81 lbs at birth and are demonstrating good thickness and growth.



16

**PRK Juneau 951J**

**\$3500**

Red		Scurred		50.0% SA		#744416	
Born	BW	205 Wt	Index	11/12 Wt	WDA	Frame	
2/17/21	75 lbs	705 lbs	101	848 lbs	3.16 lbs	5.3	

SRS Element 4154E <b>SRS Guideline 7126G</b> SRS Lace 7126E	SRS Benchmark 8105B SRS Morgan 4154B SRS Bottom Line 978B SRS Lace 3179A	<b>Dam's Production</b>
SRS Spartacus 0670Z <b>PRK Gina 951G</b> PRK Gina 781E	SRS Xtra 0347X SRS Seiko 0670S MJB Elway 322C PRK Gina 081X	BW 1 @ 75 WW 1 @ 101 Udder 9 - 9

CED	BW	WW	YW	MWW	Milk	Marb.	REA	Doc.	Stay.
+14.5	-3.1	+56	+79	+49	+21	+0.4	+0.50	+15	+18

\*\*\* **Potential Heifer Bull - Quad Polled**  
 \* A bull that would be great on heifers, but has enough performance to be used on cows. He carries good thickness throughout his long & moderate frame.  
 \* His dam is a gorgeous 2 year old female who milks heavy and has a great udder. Another tremendous cow family behind this bull.

Sept. 2021



**Lot #16 & Dam**

# Optimizers



## PRK Jafar 1711J

\$3500

Red		Polled		50.0% SA		#744348	
Born	BW	205 Wt	Index	11/12 Wt	WDA	Frame	
3/5/21	98 lbs	776 lbs	111	930 lbs	3.69 lbs	6.1	

SRS Element 4154E	SRS Benchmark 8105B	<b>Dam's Production</b>
<b>SRS Guideline 7126G</b>	SRS Morgan 4154B	
SRS Lace 7126E	SRS Bottom Line 978B	
SRS Catalyst 0435C	SRS Lace 3179A	<b>BW</b> 3 @ 94
<b>PRK Annie 1711E</b>	SRS Zeus 0509Z	<b>WW</b> 3 @ 104
PRK Annie 1511C	SRS Patchwork 0435P	<b>Udder</b> 7 - 8
	SRS Yahtzee 996Y	
	PRK Annie 157Y	

CED	BW	WW	YW	MWW	Milk	Marb.	REA	Doc.	Stay.
+10.1	0.0	+65	+93	+53	+20	+0.4	+0.51	+21	+17

\* Quad Polled

\* Jafar is a Guideline with a little more size and performance. He has been an eye catcher since birth. His top and muscle expression will stand out in the red bulls.

\* His dam has a balanced phenotype with good length and great milk.



## PRK Joist 1916J

\$3000

Black		Polled		50.0% SA		#744396	
Born	BW	205 Wt	Index	11/12 Wt	WDA	Frame	
2/14/21	75 lbs	702 lbs	100	834 lbs	3.08 lbs	5.0	

SRS Element 4154E	SRS Benchmark 8105B	<b>Dam's Production</b>
<b>SRS Guideline 7126G</b>	SRS Morgan 4154B	
SRS Lace 7126E	SRS Bottom Line 978B	
SRS Entity 4108E	SRS Lace 3179A	<b>BW</b> 1 @ 75
<b>PRK Holly 1916G</b>	Connealy Big Time 1251	<b>WW</b> 1 @ 100
PRK Holly 594C	SRS Columbia 4108B	<b>Udder</b> 9 - 9
	SRS American 0472A	
	PRK Holly 794T	

CED	BW	WW	YW	MWW	Milk	Marb.	REA	Doc.	Stay.
+14.5	-3.6	+55	+81	+48	+21	+0.4	+0.47	+20	+16

\* \* \* \* **Potential Heifer Bull** - Quad Polled

\* Light birthweight bull who has lots of volume and capacity and a clean made profile.

\* Dam is a nicely designed 2 year old with very good milk and udder structure.



## EPD and Catalog Explanations

Below is a chart showing the Salers Breed EPD Averages for all 2019 born cattle.

EPD's	CED	BW	WW	YW	MWW	Milk	Marb	REA	Doc	Stay
Breed Av	+12.2	+0.1	+57	+80	+45	+16	+0.4	+0.69	+10	+14

The Salers and Simmental breed associations are both part of the new IGS multi-breed genetic evaluation. This means you can directly compare the Salers, Optimizer, and Enhancer EPD's.

All EPD's in the catalog were current as of Nov. 1st. These are now updated weekly so you may find the most current EPD for any animal by using the American Salers Association website and search with the animals registration number.

**CED (calving ease direct)** - Expressed as a % of unassisted births. A bull with a +17.2 would be expected to produce 5% more unassisted births than the average Salers bull when bred to the same cows.

**Doc (Docility)** - Expressed as a percentage of an animals offspring that would be expected to have mild or restless disposition scores (1 or 2) rather than nervous, flighty, or aggressive scores (3, 4, or 5). A +20 means an animals offspring would be 10% more likely to have mild disposition scores than the breed average.

**Stay (Stayability)** - Expressed as a percentage of daughters who will remain in the herd until age 6. Cattle with a stayability of +20 would have 6% more daughters remain in the herd until at least age 6 than the average Salers.

**Color - Hom. Black** (Homozygous Black) bulls were DNA tested and will produce all black offspring when bred to red or black cows. **Black** - Black hided animal possessing one black and one red gene. When they are bred to black females also with a red gene they will produce 75% black offspring. When bred to red cows they will produce 50% black calves.

**Dam's Production - BW** Number of calves born and their average actual birth weight in pounds. **WW** is the number of offspring weaned and their average weaning index. **Udder** is a two digit score representing teat size and suspension with 9 being ideal.



# Optimizers

19

**PRK Jag 280J**

**\$3500**

Black		Polled		50.0% SA		#744301	
Born	BW	205 Wt	Index	11/12 Wt	WDA	Frame	
3/30/21	95 lbs	855 lbs	122	926 lbs	4.08 lbs	6.5	

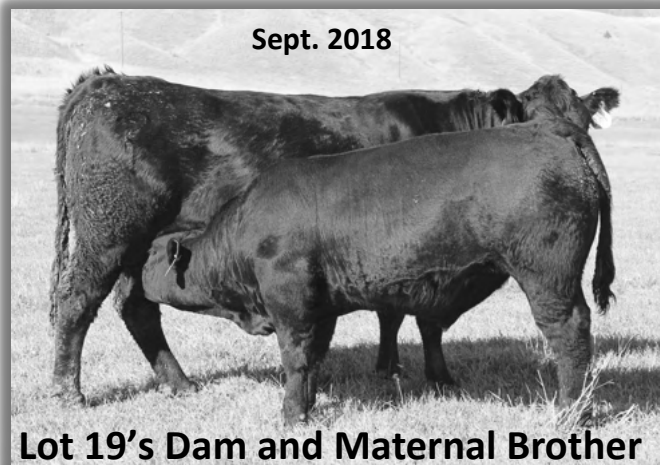
SRS Entity 4108E <b>PRK Gametime 160G</b> PRK Flicka 160Y *		Connealy Big Time SRS Columbia 4108B PRK Tonka 298T PRK Flicka 959W		<b>Dam's Production</b>	
SRS Xpert 0881X <b>PRK Rosebud 280Z</b> PRK Rosebud 070X		SRS Patent 0221P SRS Priceless 0881U * PRK Tonka 298T PRK Rosebud 870U		BW	8 @ 82
				WW	8 @ 105
				Udder	7 - 8

CED	BW	WW	YW	MWW	Milk	Marb.	REA	Doc.	Stay.
+12.7	-0.1	+69	+101	+57	+23	+0.4	+0.52	+14	+19

\* Quad Polled

\* Jag is a younger calf with super performance and a very bright future. A very long bodied bull with lots of muscle dimension and tremendous weight per day of Age!

\* His dam is a tremendous female with 4 daughters in production and a herd sire, PRK Fullback. She is a beautifully designed female with great length, thickness, and milk.



Lot 19's Dam and Maternal Brother

**PRK Fullback 280F**

20

**PRK Julius 627J**

**\$3500**

Hom Black		Polled		50.0% SA		#744338	
Born	BW	205 Wt	Index	11/12 Wt	WDA	Frame	
3/26/21	102 lbs	877 lbs	125	982 lbs	4.25 lbs	6.8	

SRS Entity 4108E <b>PRK Gametime 160G</b> PRK Flicka 160Y *		Connealy Big Time SRS Columbia 4108B PRK Tonka 298T PRK Flicka 959W		<b>Dam's Production</b>	
SRS Benchmark 8105B <b>PRK Hickory 627D</b> PRK Hickory 418B		SRS Zeus 0509Z SRS Shannon 8105U * OPP Saber 847U PRK Hickory 823U *		BW	4 @ 89
				WW	4 @ 105
				Udder	7 - 7

CED	BW	WW	YW	MWW	Milk	Marb.	REA	Doc.	Stay.
+11.7	+1.6	+79	+116	+57	+18	+0.4	+0.68	+11	+18

\* Quad Polled

\* Another young Gametime son with loads of power and performance. If you want to improve your weaning weights here is a great option. Highest WDA of any bull in the sale.

\* Julius's dam combines as much length and depth as any cow we have. Her last 2 sons were impressive yearling bulls.

\* Gametime is doing a great job with his first set of calves averaging 105 for weaning index with 88 lbs birth weight.



Lot #20's Maternal Brother

**PRK Highlight 627H- As a Yearling**

21

**PRK Jumanji 739J**

**\$2500**

Hom Black		Scurred		50.0% SA		#744358	
Born	BW	205 Wt	Index	11/12 Wt	WDA	Frame	
3/21/21	84 lbs	702 lbs	100	800 lbs	3.39 lbs	5.2	

SRS Entity 4108E <b>PRK Gametime 160G</b> PRK Flicka 160Y *		Connealy Big Time SRS Columbia 4108B PRK Tonka 298T PRK Flicka 959W		<b>Dam's Production</b>	
SRS Benchmark 8105B <b>PRK Wendy 739E</b> PRK Wendy 239Z		SRS Zeus 0509Z SRS Shannon 8105U * SRS Umpire 0584U LBR Daytonas Focus S609		BW	3 @ 82
				WW	3 @ 99
				Udder	8 - 8

CED	BW	WW	YW	MWW	Milk	Marb.	REA	Doc.	Stay.
+13.7	-1.5	+60	+87	+46	+16	+0.4	+0.45	+7	+16

\*\* Potential Heifer Bull - Quad Polled

\* A moderate framed bull with very good thickness for his lighter birthweight.

\* His mother is a balanced young female whose 3 calves have all been kept.



# Optimizers

Lot #22's Full Brother



PRK Hawkeye 599H- As a Yearling

Sept. 2021



Lot #23

PRK Fenway 384F Daughter



Aug. 2021

Lot #24 & Dam



Sept. 2021

## 22 PRK Jailor 599J \$3000

Red		Polled		50.0% SA		#744331	
Born	BW	205 Wt	Index	11/12 Wt	WDA	Frame	
3/5/21	85 lbs	695 lbs	99	872 lbs	3.46 lbs	5.9	

DJB Border Line 815A		C-Bar Evolution 107Y		Dam's Production	
PRK Fenway 384F		STCY Unity 815U *		BW	5 @ 78
PRK Lass 384A *		SRS WDA 270W		WW	5 @ 100
SRS Zeus 0509Z		PRK Lass 184Y		Udder	8 - 7
PRK Kit 599C		Sitz Uncommon			
PRK Kit 999W *		PRK Miss Montana 503R *			
		SRS Marksman 0059M			
		PRK Kit 245M			

CED	BW	WW	YW	MWW	Milk	Marb.	REA	Doc.	Stay.
+14.9	-2.1	+55	+81	+47	+19	+0.4	+0.47	+21	+18

**\* \* \* Potential Heifer Bull - Quad Polled**  
 \* This bull is a very balanced and complete bull that will work in about any scenario with a great maternal pedigree.  
 \* His long bodied dam has been a no miss female with 2 daughters in production and 2 past sale bulls. She is the grand dam to Lot #39.

## 23 PRK Jalapeno 861J \$3500

Red		Polled		50.0% SA		#744385	
Born	BW	205 Wt	Index	11/12 Wt	WDA	Frame	
2/24/21	79 lbs	727 lbs	104	880 lbs	3.37 lbs	6.0	

DJB Border Line 815A		C-Bar Evolution 107Y		Dam's Production	
PRK Fenway 384F		STCY Unity 815U *		BW	2 @ 78
PRK Lass 384A *		SRS WDA 270W		WW	2 @ 107
SRS Benchmark 8105B		PRK Lass 184Y		Udder	9 - 9
PRK Glasgow 861F		SRS Zeus 0509Z			
PRK Glasgow 671D		SRS Shannon 8105U *			
		PRK Ace 081A			
		PRK Glasgow 467B			

CED	BW	WW	YW	MWW	Milk	Marb.	REA	Doc.	Stay.
+15.7	-1.7	+64	+95	+48	+16	+0.4	+0.55	+21	+16

**\* \* \* Potential Heifer Bull - Quad Polled**  
 \* Jalapeno has as much thickness and power as any light birth weight bull in the sale. He will offer you great flexibility in his future use.  
 \* His young dam is a great female in our herd. Typical of the Benchmark daughters she is very long and great uddered.

## 24 PRK Jericho 876J \$3000

Red		Polled		50.0%SA		Commercial	
Born	BW	205 Wt	Index	11/12 Wt	WDA	Frame	
2/20/21	79 lbs	709 lbs	101	836 lbs	3.15 lbs	5.9	

DJB Border Line 815A		C-Bar Evolution 107Y		Dam's Production	
PRK Fenway 384F		STCY Unity 815U *		BW	2 @ 82
PRK Lass 384A *		SRS WDA 270W		WW	2 @ 101
PRK Cash 160C		PRK Lass 184Y		Udder	9 - 7
PRK 876F		SRS Zeus 0509Z			
PRK 576C		PRK Flicka 160Y *			
		SRS Yakima 9118Y			
		PRK 567R			

CED	BW	WW	YW	MWW	Milk	Marb.	REA	Doc.	Stay.

**\* \* \* Potential Heifer Bull - Quad Polled**  
**\* Jericho sells as a commercial bull.**  
 \* A well made, balanced, and top red bull. His full brother last year sold to Morgan Batty.  
 \* Fenway has been used for several years with positive results in our herd and his exceptional dam is still doing great things in our program.



# Optimizers

## 25 PRK Jackal 770J \$3000

Hom Black		Scurred		50.0% SA		#744366	
Born	BW	205 Wt	Index	11/12 Wt	WDA	Frame	
3/2/21	90 lbs	699 lbs	100	866 lbs	3.40 lbs	6.3	

Connealy Comrade 1385 <b>MAC F1 Enduro 43E</b> MAC Carina 176C		Connealy Consensus 7229 Happy Gee of Conanga 919 S Nebraska 330N MAC Willow 134W		<b>Dam's Production</b>							
SRS Bullseye 592B <b>PRK Rosebud 770E</b> PRK Rosebud 170Y		SOO Line Motive 9016 SRS Juliet 0584R SRS Wanted 0218W PRK Rosebud 870U		<table border="1"> <tr><td>BW</td><td>3 @ 81</td></tr> <tr><td>WW</td><td>3 @ 95</td></tr> <tr><td>Udder</td><td>9 - 9</td></tr> </table>		BW	3 @ 81	WW	3 @ 95	Udder	9 - 9
BW	3 @ 81										
WW	3 @ 95										
Udder	9 - 9										

CED	BW	WW	YW	MWW	Milk	Marb.	REA	Doc.	Stay.
+14.1	-1.2	+59	+89	+46	+17	+0.5	+0.6	+9	+15

\* A bull with good depth of body and thickness who will sire all black calves that will make a good set of feeding cattle.  
 \* His moderate framed mother is another SRS Bullseye daughter with a very good udder.  
 \* His sire, MAC Enduro, has been doing a solid job in our program and for MJB Salers.

## 26 PRK James Bond 1810J \$3500

Black		Polled		50.0% SA		#744371	
Born	BW	205 Wt	Index	11/12 Wt	WDA	Frame	
2/25/21	87 lbs	740 lbs	106	884 lbs	3.40 lbs	5.9	

Connealy Comrade 1385 <b>MAC F1 Enduro 43E</b> MAC Carina 176C		Connealy Consensus 7229 Happy Gee of Conanga 919 S Nebraska 330N MAC Willow 134W		<b>Dam's Production</b>							
SRS Catalyst 0435C <b>PRK Rosebud 1810F</b> PRK Rosebud 570C		SRS Zeus 0509Z SRS Patchwork 0435P SRS Ariat 270A PRK Rosebud 070X		<table border="1"> <tr><td>BW</td><td>2 @ 83</td></tr> <tr><td>WW</td><td>2 @ 103</td></tr> <tr><td>Udder</td><td>9 - 9</td></tr> </table>		BW	2 @ 83	WW	2 @ 103	Udder	9 - 9
BW	2 @ 83										
WW	2 @ 103										
Udder	9 - 9										

CED	BW	WW	YW	MWW	Milk	Marb.	REA	Doc.	Stay.
+15.0	-0.6	+66	+100	+54	+21	+0.5	+0.55	+14	+17

\* **Potential Heifer Bull** - Quad Polled  
 \* Here is a long spined, balanced bull who has a moderate birth weight and good performance.  
 \* His dam is a deep ribbed, moderate framed female who has a very good udder and raised another very top heifer bull in last years sale.

## 27 PRK Java 465J \$3000

Black		Polled		62.5% SA		#744314	
Born	BW	205 Wt	Index	11/12 Wt	WDA	Frame	
3/9/21	102 lbs	748 lbs	107	934 lbs	3.77 lbs	6.6	

GGT P BLK Heavy Hitter <b>GGT Final Choice 119B</b> GGT Ms Finality 139Y*		GGT P Heavy Duty 100J GGT P Harrah 195K SAV Final Answer 0035 GGT Designer 222W		<b>Dam's Production</b>							
SRS Spartacus 0670Z <b>PRK Roberta 465B</b> PRK Roberta 271Z		SRS Xtra 0347X SRS Seiko 0670S SRS Xpert 0881X PRK Roberta 071X		<table border="1"> <tr><td>BW</td><td>6 @ 97</td></tr> <tr><td>WW</td><td>6 @ 100</td></tr> <tr><td>Udder</td><td>8 - 9</td></tr> </table>		BW	6 @ 97	WW	6 @ 100	Udder	8 - 9
BW	6 @ 97										
WW	6 @ 100										
Udder	8 - 9										

CED	BW	WW	YW	MWW	Milk	Marb.	REA	Doc.	Stay.
+13.6	+0.5	+69	+95	+49	+15	+0.3	+0.6	+13	+20

\* Quad Polled  
 \* Java is a bigger, long bodied bull with eye appeal. His full brother last year was a top seller going to Roger Derks.  
 \* Java's dam is a moderate, very attractively made female who is easy fleshing. She is deep and very thick made with a great udder for an older cow. Ideal in her type and kind.



PRK Headliner 465H- As a Yearling

## 28 PRK Jockey 948J \$3000

Hom Black		Polled		62.5% SA		#744413	
Born	BW	205 Wt	Index	11/12 Wt	WDA	Frame	
2/12/21	75 lbs	690 lbs	99	800 lbs	2.93 lbs	5.0	

GGT P BLK Heavy Hitter <b>GGT Final Choice 119B</b> GGT Ms Finality 139Y*		GGT P Heavy Duty 100J GGT P Harrah 195K SAV Final Answer 0035 GGT Designer 222W		<b>Dam's Production</b>							
SRS Spartacus 0670Z <b>PRK Jewel 948G</b> PRK Jewel 748E		SRS Xtra 0347X SRS Seiko 0670S PRK Ace 081A PRK Jewel 486B		<table border="1"> <tr><td>BW</td><td>1 @ 75</td></tr> <tr><td>WW</td><td>1 @ 99</td></tr> <tr><td>Udder</td><td>9 - 9</td></tr> </table>		BW	1 @ 75	WW	1 @ 99	Udder	9 - 9
BW	1 @ 75										
WW	1 @ 99										
Udder	9 - 9										

CED	BW	WW	YW	MWW	Milk	Marb.	REA	Doc.	Stay.
+16.6	-3.4	+60	+82	+47	+17	+0.4	+0.65	+12	+18

\* \* \* **Potential Heifer Bull** - Quad Polled  
 \* A balanced well made bull who will work great on heifers with several calving ease sires in his pedigree.  
 \* His 2 year old dam has the look of a great female with good thickness and an easy fleshing body type. Like all SRS Spartacus daughters, she has an exceptional udder design.

## 29 PRK Jocko 977J \$2500

Black		Polled		62.5% SA		#744424	
Born	BW	205 Wt	Index	11/12 Wt	WDA	Frame	
2/11/21	76 lbs	670 lbs	96	842 lbs	3.07 lbs	5.8	

GGT P BLK Heavy Hitter <b>GGT Final Choice 119B</b> GGT Ms Finality 139Y*		GGT P Heavy Duty 100J GGT P Harrah 195K SAV Final Answer 0035 GGT Designer 222W		<b>Dam's Production</b>							
SRS Cinch 0778C <b>PRK Robin 977G</b> PRK Robin 377A*		SRS Ariat 270A SRS Pony Tail 0778T SRS Yahtzee 996Y PRK Robin 557R		<table border="1"> <tr><td>BW</td><td>1 @ 76</td></tr> <tr><td>WW</td><td>1 @ 96</td></tr> <tr><td>Udder</td><td>8 - 9</td></tr> </table>		BW	1 @ 76	WW	1 @ 96	Udder	8 - 9
BW	1 @ 76										
WW	1 @ 96										
Udder	8 - 9										

CED	BW	WW	YW	MWW	Milk	Marb.	REA	Doc.	Stay.
+16.8	-3.3	+60	+87	+45	+15	+0.3	+0.63	+16	+18

\* \* \* **Potential Heifer Bull** - Quad Polled  
 \* Another light birth weight bull from a 2 year old dam.  
 \* His mother is a very long made female who milks really well.  
 \* Final Choice has been a consistent calving ease sire for our first calf heifers.

# Optimizers

30

**PRK Jolt 440J**

**\$3000**

Hom Black		Polled		62.5% SA		#744313	
Born	BW	205 Wt	Index	11/12 Wt	WDA	Frame	
3/4/21	90 lbs	698 lbs	100	860 lbs	3.4 lbs	5.9	

MJB Elway 322C <b>PRK Fullback 280F</b> PRK Rosebud 280Z	MAC Quarterback 58Y MJB Yellow Rose 156Z * SRS Xpert 0881X PRK Rosebud 070X	<b>Dam's Production</b>
SRS United 0653U <b>PRK Ruth 440B</b> PRK Ruth 250Z	SRS Saint 0218S SRS Starr 0653S * SRS Xpert 0881X PRK Ruth 850U	BW 6 @ 84
		WW 6 @ 99
		Udder 8 - 7

CED	BW	WW	YW	MWW	Milk	Marb.	REA	Doc.	Stay.
+14.6	-1.0	+59	+87	+47	+18	+0.4	+0.55	+18	+20

\* **Potential Heifer Bull** - Triple polled  
 \* Jolt is a bull with lots of length and shape to his top line. He is a full brother to, PRK Halfback 440H, a bull we kept last year and used clean-up on a large group of heifers.  
 \* Jolt could be used on some larger framed heifers.  
 \* Ruth is a very solid made and performing female who has raised 5 bulls and one replacement female in her 6 calves.



31

**PRK Jigsaw 674J**

**\$3000**

Black		Polled		62.5% SA		#744346	
Born	BW	205 Wt	Index	11/12 Wt	WDA	Frame	
3/4/21	95 lbs	753 lbs	108	902 lbs	3.57 lbs	6.4	

MJB Elway 322C <b>PRK Fullback 280F</b> PRK Rosebud 280Z	MAC Quarterback 58Y MJB Yellow Rose 156Z * SRS Xpert 0881X PRK Rosebud 070X	<b>Dam's Production</b>
SRS Zeus 0509Z <b>PRK Unity 674D</b> PRK Unity 492B	Sitz Uncommon PRK Miss Montana 503R * OPP Saber 847U PRK Unity 092X	BW 4 @ 91
		WW 4 @ 99
		Udder 9 - 8

CED	BW	WW	YW	MWW	Milk	Marb.	REA	Doc.	Stay.
+12.0	0.0	+65	+93	+49	+17	+0.5	+0.60	+10	+18

\* **Quad Polled**  
 \* A good performing bull who demonstrates the length found in most of the PRK Fullback offspring.  
 \* PRK Fullback was the high selling bull in our 2018 sale to Bruce & Heidi Thurgood. He has produced some good calves for us and we are looking forward to his daughters calving.

Sept. 2020



**Dam of Lot #30 & PRK Halfback 440H**

32

**PRK Jesse 751J**

**\$3000**

Hom Black		Scurred		50.0% SA		#744362	
Born	BW	205 Wt	Index	11/12 Wt	WDA	Frame	
3/4/21	79 lbs	689 lbs	98	802 lbs	3.17 lbs	5.4	

MJB Gladiator 305B MJB Barbie 126Z *	SRS Xtra 0347X SRS Seiko 0670S MJB Barbwire 260S MJB Morgiana 102S	<b>Dam's Production</b>
SRS Benchmark 8105B <b>PRK Shannon 751E</b> PRK Shannon 451B	SRS Zeus 0509Z SRS Shannon 8105U* SRS Yakima 9118Y PRK Shannon 251Z	BW 3 @ 80
		WW 3 @ 98
		Udder 9 - 9

CED	BW	WW	YW	MWW	Milk	Marb.	REA	Doc.	Stay.
+13.6	-0.3	+65	+88	+46	+13	+0.4	+0.57	+10	+16

\* **Potential Heifer Bull** - Triple Polled  
 \* A lighter birth weight bull who has a lot of shape and eye appeal in a moderate package.  
 \* His dam is a smaller female who has good length and a very good udder.

**MJB Gladiator 305B - Lot #32's Sire**



**Gladiator son - Lot #32's Pat. Brother**



Aug. 2021

# Enhancers

**33**

**PRK Jurassic 728J \$3000**

Hom Black	Polled	37.5% SA	31.0% Simm	#744354		
Born	BW	205 Wt	Index	11/12 Wt	WDA	Frame
3/7/21	99 lbs	772 lbs	110	912 lbs	3.65 lbs	5.9

Hooks Shear Force 38K TFS Due North 2659Z TFS 1/4 SM 3/4 8419T	Nichols Legacy G151 C&D Tracy Mytty In Focus TFS Good As Gold 0056K	<b>Dam's Production</b>
SRS Bullseye 592B PRK Hickory 728E PRK Hickory 418B	SOO Line Motive 9016 SRS Juliet 0584R OPP Saber 847U PRK Hickory 823U	BW 3 @ 87 WW 3 @ 107 Udder 9 - 9

CED	BW	WW	YW	MWW	Milk	Marb.	REA	Doc.	Stay.
+11.0	+1.1	+72	+109	+55	+19	+0.4	+0.71	+10	+17

\* Quad Polled  
 \* Jurassic is a powerful bull with lots of width and dimension.  
 \* His dam is a tremendous young female in our herd. She has great length, thickness, and balance along with a super udder.  
 \* Her first calf is our herd sire, PRK GPS 728G. His first set of calves are consistently good with several top sale bulls.



**Lot #33's Dam & PRK GPS 728G**

**34**

**PRK Jordan 783J \$3500**

Hom Black	Polled	25.0% SA	31% Simm	#744367		
Born	BW	205 Wt	Index	11/12 Wt	WDA	Frame
2/28/21	84 lbs	680 lbs	97	832 lbs	3.24 lbs	5.3

Hooks Shear Force 38K TFS Due North 2659Z TFS 1/4 SM 3/4 8419T	Nichols Legacy G151 C&D Tracy Mytty In Focus TFS Good As Gold 0056K	<b>Dam's Production</b>
MJB Elway 322C PRK Suzanne 783E PRK Suzanne 483B	MAC Quarterback 58Y MJB Yellow Rose 156Z* SRS Yakima 9118Y PRK Suzanne 182Y	BW 3 @ 83 WW 2 @ 97 Udder 9 - 8

CED	BW	WW	YW	MWW	Milk	Marb.	REA	Doc.	Stay.
+12.5	-1.1	+65	+96	+49	+17	+0.5	+0.58	+11	+18

\* **Potential Heifer Bull**  
 \* A smaller framed bull with good length and a wide top. He will add thickness and dimension to his calves.  
 \* His mother is a nice young female with good thickness and length.

**35**

**PRK Jack 831J \$3000**

Hom Black	Polled	37.5% SA	31% Simm	#744375		
Born	BW	205 Wt	Index	11/12 Wt	WDA	Frame
3/1/21	69 lbs	720 lbs	100(twin)	846 lbs	3.30 lbs	4.6

Hooks Shear Force 38K TFS Due North 2659Z TFS 1/4 SM 3/4 8419T	Nichols Legacy G151 C&D Tracy Mytty In Focus TFS Good As Gold 0056K	<b>Dam's Production</b>
SRS Dundee 270D PRK Gina 831F PRK Gina 528C*	Connealy Greeley SRS Finicky 0838U* SRS Ariat 270A PRK Gina 308A	BW 3 @ 70 WW 3 @ 101 Udder 9 - 8

CED	BW	WW	YW	MWW	Milk	Marb.	REA	Doc.	Stay.
+12.6	+0.1	+70	+105	+55	+19	+0.5	+0.61	+10	+18

\* **Twin** - Quad Polled  
 \* He is a twin to Lot #36 and if you are looking for consistency these two bulls are identical. His calves will be moderate, thick, and early maturing.  
 \* Attractive female with great balance and a super personality.

## Breed Explanations

**Optimizer** - Term used by the Salers Association to refer to cattle that are crossbred between registered Salers and Angus or Red Angus cattle.

**Enhancer** - Name we have given to our 3 way cross cattle which are made up of Salers, Simmental, and Angus or Red Angus. We have been using 1/2 to 3/4 Salers X Angus or Red Angus and breeding them to 1/2 to 3/4 Simmental X Angus or Red Angus. We are more concerned with the type of cattle and their contributions to our program than specific percentages.

We have been breeding Salers cattle for 25 years and prior to that were using Simmental in our commercial herd. We have decided to again incorporate some Simmental genetics into part of our cattle. We feel this can increase the level of hybrid vigor and genetic diversity available to our customers. Simmental can contribute performance, depth, thickness, and rib eye area to their offspring. Salers cattle add calving ease, calf vigor, dressing percentage, fertility, hardiness and a cleaner more eye appealing phenotype. All three of the breeds are very strong in maternal traits and that continues to be a big focus of our breeding program! We plan to continue to breed Salers cattle as well as Optimizers as we increase and develop our Enhancers.



**Lot #35**



# Enhancers

36

**PRK Jackson 831BJ \$3000**

Hom Black		Polled		37.5% SA	31% Simm	#744376	
Born	BW	205 Wt	Index	11/12 Wt	WDA	Frame	
3/1/21	69 lbs	734 lbs	100	832 lbs	3.25 lbs	4.6	

Hooks Shear Force 38K <b>TFS Due North 2659Z</b> TFS 1/4 SM 3/4 8419T		Nichols Legacy G151 C&D Tracy Mytty In Focus TFS Good As Gold 0056K		<b>Dam's Production</b>							
SRS Dundee 270D <b>PRK Gina 831F</b> PRK Gina 528C*		Connealy Greeley SRS Finicky 0838U* SRS Ariat 270A PRK Gina 308A		<table border="1"> <tr><th>BW</th><td>3 @ 70</td></tr> <tr><th>WW</th><td>3 @ 101</td></tr> <tr><th>Udder</th><td>9 - 8</td></tr> </table>		BW	3 @ 70	WW	3 @ 101	Udder	9 - 8
BW	3 @ 70										
WW	3 @ 101										
Udder	9 - 8										

CED	BW	WW	YW	MWW	Milk	Marb.	REA	Doc.	Stay.
+12.6	+0.1	+70	+105	+55	+19	+0.5	+0.61	+10	+18

\* **Twin** - Quad Polled  
 \* Here is the other half of an identical team with Lot #35. I don't think you will find any more thickness in this moderate of a package.  
 \* This bull was raised on a foster dam.

38

**PRK Jester 715J \$2500**

Red		Polled		37.5% SA	37.5% Simm	#744351	
Born	BW	205 Wt	Index	11/12 Wt	WDA	Frame	
2/28/21	92 lbs	685 lbs	98	834 lbs	3.25 lbs	5.7	

TJ Diplomat 294D <b>Hooks Full Figures 11F</b> Hooks Docila 23D		MAR Innovation 251 (AN) TJ 33Y Hooks Shear Force 38K Hooks Yonkers 21Y		<b>Dam's Production</b>							
SRS Bullseye 592B <b>PRK Hickory 715E</b> PRK Hickory 116Y		SOO Line Motive 9016 (AN) SRS Juliet 0584R DJF Whiskey River 9006W PRK Hickory 603S		<table border="1"> <tr><th>BW</th><td>4 @ 75</td></tr> <tr><th>WW</th><td>3 @ 96</td></tr> <tr><th>Udder</th><td>9 - 8</td></tr> </table>		BW	4 @ 75	WW	3 @ 96	Udder	9 - 8
BW	4 @ 75										
WW	3 @ 96										
Udder	9 - 8										

CED	BW	WW	YW	MWW	Milk	Marb.	REA	Doc.	Stay.
+10.5	-0.5	+68	+105	+51	+18	+0.5	+0.95	+21	+18

\* Quad Polled  
 \* The Hickory female is an attractive, moderate framed SRS Bullseye cow with a nice udder.  
 \* She is a twin to the dam of the Lot #47 bull and from a cow family with great longevity.

39

**PRK Jumbo 899J \$3500**

Red		Polled		25.0% SA	37.5% Simm	#744393	
Born	BW	205 Wt	Index	11/12 Wt	WDA	Frame	
2/20/21	94 lbs	819 lbs	117	1030 lbs	3.89 lbs	6.4	

TJ Diplomat 294D <b>Hooks Full Figures 11F</b> Hooks Docila 23D		MAR Innovation 251 (AN) TJ 33Y Hooks Shear Force 38K Hooks Yonkers 21Y		<b>Dam's Production</b>							
DJF Border Line 815A <b>PRK Kit 899F</b> PRK Kit 599C		C-Bar Evolution 107Y (RA) STCY Unity 815U* SRS Zeus 0509Z PRK Kit 999W*		<table border="1"> <tr><th>BW</th><td>2 @ 89</td></tr> <tr><th>WW</th><td>2 @ 113</td></tr> <tr><th>Udder</th><td>8 - 8</td></tr> </table>		BW	2 @ 89	WW	2 @ 113	Udder	8 - 8
BW	2 @ 89										
WW	2 @ 113										
Udder	8 - 8										

CED	BW	WW	YW	MWW	Milk	Marb.	REA	Doc.	Stay.
+14.2	-0.8	+79	+123	+67	+27	+0.5	+0.89	+19	+17

\* Quad Polled  
 \* Jumbo is truly a fitting name for this massive bull. He has been leading the pack all summer for performance and is the heaviest bull in the sale. For all his power he still maintains good balance.  
 \* His young dam has great length and thickness along with a very good disposition. She is doing a great job as her first calf was a top seller in last years sale to Roger Derks.

37

**PRK Jiffy 9119J \$2500**

Hom Black		Polled		18.75% SA	44% Simm	#744400	
Born	BW	205 Wt	Index	11/12 Wt	WDA	Frame	
2/25/21	91 lbs	718 lbs	103	846 lbs	3.25 lbs	5.5	

Hooks Shear Force 38K <b>TFS Due North 2659Z</b> TFS 1/4 SM 3/4 8419T		Nichols Legacy G151 C&D Tracy Mytty In Focus TFS Good As Gold 0056K		<b>Dam's Production</b>							
MSR Tenacity 3733A <b>PRK Hannah 9119G</b> PRK Hannah 419B		Connealy Confidence 0100 MSR 1206Y of 9325W SBET SRS United 0653U PRK Hannah 219Z		<table border="1"> <tr><th>BW</th><td>1 @ 91</td></tr> <tr><th>WW</th><td>1 @ 103</td></tr> <tr><th>Udder</th><td>7 - 9</td></tr> </table>		BW	1 @ 91	WW	1 @ 103	Udder	7 - 9
BW	1 @ 91										
WW	1 @ 103										
Udder	7 - 9										

CED	BW	WW	YW	MWW	Milk	Marb.	REA	Doc.	Stay.
+16.0	-0.9	+66	+101	+53	+20	+0.4	+0.56	+23	+18

\* Quad Polled  
 \* A Simmental influenced bull from both sides of his pedigree that carries a lot of volume and capacity.  
 \* His 2 year old dam is a beautifully designed female with great balance who milks really well.

Sept. 2021

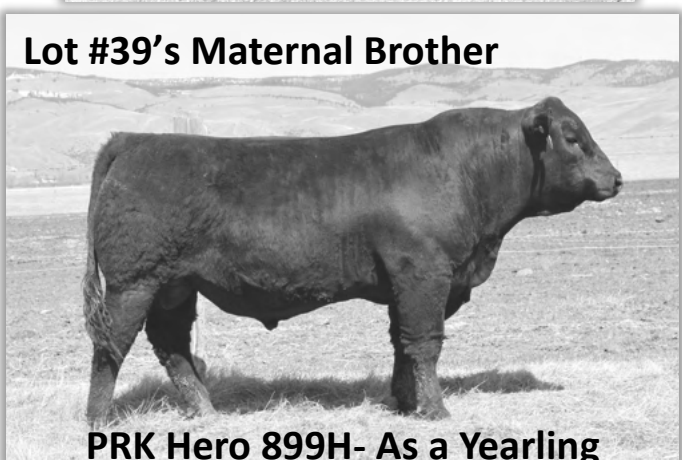


**Lot #37**



**Lot #39 & Dam**

**Lot #39's Maternal Brother**



**PRK Hero 899H- As a Yearling**

# Enhancers

## 40 PRK Jetta 9193J \$2500

Hom Black		Polled		12.5% SA	50.0% Simm	#744405	
Born	BW	205 Wt	Index	11/12 Wt	WDA	Frame	
2/18/21	69 lbs	649 lbs	93	774 lbs	2.90 lbs	4.7	

TJ Diplomat 294D Hooks Full Figures 11F Hooks Docila 23D		MAR Innovation 251(AN) TJ 33Y Hooks Shear Force 38K Hooks Yonkers 21Y		<b>Dam's Production</b>	
MSR Tenacity 3733A PRK Honor 9193G PRK Honor 793E		Connealy Confidence 0100 MSR 1206Y of 9325W SBET PRK Captain 098C PRK Honor 993W		BW	1 @ 69
				WW	1 @ 93
				Udder	9 - 8

CED	BW	WW	YW	MWW	Milk	Marb.	REA	Doc.	Stay.
+17.9	-4.7	+61	+96	+54	+24	+0.4	+0.82	+21	+17

- \* \* \* \* **Potential Heifer Bull - Quad Polled**
- \* Jetta should be a sleep all night heifer bull.
- \* His 2 year old dam is a moderate sized female that is very attractive and balanced in her design. She is a sister to the Lot # 45 bull as well as to the dams of Lot #11 and a bull we sent to Midland this year. A top cow family behind this bull.

## 41 PRK Jasper 137J \$3500

Hom Black		Polled		50.0% SA	12.5% Simm	#744288	
Born	BW	205 Wt	Index	11/12 Wt	WDA	Frame	
3/8/21	89 lbs	727 lbs	104	866 lbs	3.48 lbs	5.9	

MSR Tenacity 3733A PRK GPS 728G PRK Hickory 728E		Connealy Confidence 0100 MSR 1206Y of 9325W SBET SRS Bullseye 592B PRK Hickory 418B		<b>Dam's Production</b>	
SRS United 0653U PRK Topaz 137Y DWB Topaz 3T		SRS Saint 0218S SRS Starr 0653S * DWB Romeo 502R DWB Miss Natasha 02N		BW	9 @ 81
				WW	9 @ 95
				Udder	7 - 8

CED	BW	WW	YW	MWW	Milk	Marb.	REA	Doc.	Stay.
+16.5	-2.0	+55	+80	+44	+17	+0.3	+0.63	+17	+16

- \* \* **Potential Heifer Bull - Quad Polled**
- \* A bull that is multi- purpose, with both calving ease and some performance. Jasper has tremendous length along with some width to his top.
- \* Backed by a quality, good milking, balanced female who has consistently had lighter birth weight calves.

## 42 PRK Jive 391J \$3500

Black		Scurred		37.5% SA	12.5% Simm	#744310	
Born	BW	205 Wt	Index	11/12 Wt	WDA	Frame	
2/27/21	97 lbs	721 lbs	103	912 lbs	3.53 lbs	5.8	

MSR Tenacity 3733A PRK GPS 728G PRK Hickory 728E		Connealy Confidence 0100 MSR 1206Y of 9325W SBET SRS Bullseye 592B PRK Hickory 418B		<b>Dam's Production</b>	
SRS Yakima 9118Y PRK Sonata 391A PRK Sonata 043X		SRS Unreal 0151U SRS Lace 9118W SRS Sequel 0122S PRK Sonata 673S		BW	7 @ 93
				WW	6 @ 104
				Udder	7 - 8

CED	BW	WW	YW	MWW	Milk	Marb.	REA	Doc.	Stay.
+11.3	+0.9	+60	+88	+52	+22	+0.4	+0.58	+11	+13

- \* Quad Polled
- \* A bull with a lot of shape to his design and top line. He is long bodied and has great muscle expression.
- \* His dam is a long, feminine, very clean and correctly made female.

## 43 PRK Jaw Breaker 539J \$3500

Black		Polled		50.0% SA	12.5% Simm	#744631	
Born	BW	205 Wt	Index	11/12 Wt	WDA	Frame	
3/7/21	95 lbs	757 lbs	108	880 lbs	3.52 lbs	6.0	

MSR Tenacity 3733A PRK GPS 728G PRK Hickory 728E		Connealy Confidence 0100 MSR 1206Y of 9325W SBET SRS Bullseye 592B PRK Hickory 418B		<b>Dam's Production</b>	
PRK Ace 081A PRK Peppermint 539C PRK Peppermint 429P		PRK Yellowstone 966Y PRK Gina 081X SRS Legend 9816L PRK Lipstick 139L		BW	5 @ 86
				WW	5 @ 101
				Udder	7 - 8

CED	BW	WW	YW	MWW	Milk	Marb.	REA	Doc.	Stay.
+13.0	0.0	+58	+81	+50	+21	+0.3	+0.66	+15	+15

- \* Quad Polled
- \* Another GPS son with lots of thickness and muscle in a very neatly designed and attractive package.
- \* If you want bulls that will sire wide tops, thick quarters, and a very attractive phenotype take a look at the GPS sons. He is doing a great job for us with his first calves.

Sept. 2021



Sept. 2021



# Enhancers

44

**PRK Judo 624J**

**\$3000**

Hom Black		Polled	50.0% SA	12.5% Simm	#744337	
Born	BW	205 Wt	Index	11/12 Wt	WDA	Frame
3/8/21	91 lbs	759 lbs	108	904 lbs	3.63 lbs	5.4

MSR Tenacity 3733A <b>PRK GPS 728G</b> PRK Hickory 728E	Connealy Confidence 0100 MSR 1206Y of 9325W SBET SRS Bullseye 592B PRK Hickory 418B	<b>Dam's Production</b>
MAC F1 Humboldt 312Z <b>PRK Montana 624D</b> PRK Montana 424B	Werner War Party 2417 MAC BLK Melody 243M SRS United 0653U PRK Montana 807U	BW 4 @ 84 WW 4 @ 107 Udder 7 - 6

CED	BW	WW	YW	MWW	Milk	Marb.	REA	Doc.	Stay.
+14.4	-0.5	+63	+93	+55	+23	+0.4	+0.72	+19	+16

\* Quad Polled  
\* Judo is built like a tank and will catch your eye in the pen for his massive hip and great thickness. Loads of performance in a smaller framed package.  
\* His very long spined mother has had all replacement heifers until this stout made bull.

45

**PRK Jaws 793J**

**\$3500**

Black		Polled	37.5% SA	12.5% Simm	#744369	
Born	BW	205 Wt	Index	11/12 Wt	WDA	Frame
3/14/21	98 lbs	755 lbs	108	848 lbs	3.49 lbs	5.8

MSR Tenacity 3733A <b>PRK GPS 728G</b> PRK Hickory 728E	Connealy Confidence 0100 MSR 1206Y of 9325W SBET SRS Bullseye 592B PRK Hickory 418B	<b>Dam's Production</b>
PRK Captain 098C <b>PRK Honor 793E</b> PRK Honor 993W	SRS Ariat 270A PRK Virginia 098X SRS Sequel 0122S PRK Honor 345N	BW 4 @ 79 WW 4 @ 101 Udder 9 - 9

CED	BW	WW	YW	MWW	Milk	Marb.	REA	Doc.	Stay.
+10.9	+1.0	+62	+91	+50	+19	+0.3	+0.63	+13	+14

\* Quad Polled  
\* Great length in this stylish Enhancer bull. He is backed by some solid quality females.  
\* His dam had a set of twin bulls in last years sale. She is the grand dam to the lot #40 bull.

46

**PRK Jayhawk 561J**

**\$3500**

Hom Black		Polled	31% SA	37.5% Simm	#744327	
Born	BW	205 Wt	Index	11/12 Wt	WDA	Frame
3/4/21	103 lbs	808 lbs	116	1005 lbs	3.97 lbs	6.1

Hooks Black Hawk 50B <b>Hooks Eagle 6E</b> Hooks Crystal 1C	Hooks Xavier 14X Hooks Yvette 100Y GW-WBF Substance 820Y Hooks underestimated 6U	<b>Dam's Production</b>
SRS American 0472A <b>PRK Rhonda 561C</b> PRK Rhonda 541R*	PRK Yellowstone 966Y SRS Pondera 0472P SRS Nokia 9722N PRK Nancy 347N	BW 5 @ 87 WW 5 @ 105 Udder 6 - 8

CED	BW	WW	YW	MWW	Milk	Marb.	REA	Doc.	Stay.
+13.4	-0.2	+82	+125	+65	+24	+0.5	+0.93	+21	+19

\* Quad Polled  
\* Jayhawk has been a standout stud since his birth. He has the eye appeal that is hard to find in a calf with this much power and substance. He is truly a unique combination!  
\* 2nd heaviest and 3rd highest WDA bull in the sale.  
\* Dam has produced 2 other bulls and 2 replacement heifers.



47

**PRK Jet Ski 716J**

**\$3000**

Hom Black		Polled	37.5% SA	37.5% Simm	#744352	
Born	BW	205 Wt	Index	11/12 Wt	WDA	Frame
3/6/21	98 lbs	722 lbs	103	854 lbs	3.40 lbs	5.5

Hooks Black Hawk 50B <b>Hooks Eagle 6E</b> Hooks Crystal 1C	Hooks Xavier 14X Hooks Yvette 100Y GW-WBF Substance 820Y Hooks underestimated 6U	<b>Dam's Production</b>
SRS Bullseye 592B <b>PRK Hickory 716E</b> PRK Hickory 116Y	SOO Line Mottive 9016 SRS Juliet 0584R DJF Whiskey River 9006W PRK Hickory 603S	BW 3 @ 94 WW 3 @ 93 Udder 9 - 9

CED	BW	WW	YW	MWW	Milk	Marb.	REA	Doc.	Stay.
+7.9	+0.5	+79	+121	+54	+14	+0.5	+0.96	+18	+17

\* Quad Polled  
\* These Eagle sons over the last 3 years have been high volume and great performing bulls without excess frame size.  
\* This bulls dam is a twin to the dam of lot #38. She is a moderately made SRS Bullseye daughter with a very good disposition.



# Salers

## 48 PRK Juror 911J \$3000

Hom Black		Polled		PB Salers		#744401	
Born	BW	205 Wt	Index	11/12 Wt	WDA	Frame	
2/21/21	80 lbs	698 lbs	100	806 lbs	3.05 lbs	5.3	

DJF Zodiac 941Z DJF Daybreak 264D DJF Zoey 264Z	Legend's Mojo 321N DJF Whirl 941W* SRS Wyatt Earp 965W DJF Sahara 64S	<b>Dam's Production</b>
MAC Earthquake 158E PRK Heavenly 911G PRK Heavenly 311A	MAC Centennial 167C MAC Zinnia 207Z SRS Yuma 072Y PRK Heavenly 411P	BW 1 @ 80 WW 1 @ 100 Udder 9 - 8

CED	BW	WW	YW	MWW	Milk	Marb.	REA	Doc.	Stay.
+14.1	-1.5	+52	+69	+43	+18	+0.4	+0.64	+5	+13

- \* \* **Potential Heifer Bull** - Quad Polled
- \* Purebred heifer bull with some shape and thickness.
- \* His dam is a well balanced 2 year old with good length, that milks very well with a solid udder.
- \* DJF Daybreak is a proven calving ease sire in our program.



DJF Daybreak 264D- As a Yearling

## 49 PRK Jetty 637J \$3500

Black		Polled		75.0% SA		#744341	
Born	BW	205 Wt	Index	11/12 Wt	WDA	Frame	
3/22/21	87 lbs	734 lbs	105	804 lbs	3.42 lbs	6.6	

MAC Decade 140D MAC Frontier 184F MAC Yorann 258Y	MAC Union Station 87U MAC Zoe 503Z MAC Torrington 139T MAC Royann 100R	<b>Dam's Production</b>
DJF Border Line 815A PRK Cathleen 637D PRK Cathleen 243Z	C-Bar Evolution 107Y(RA) STCY Unity 815U * SRS WDA 270W PRK Cathleen 843U	BW 4 @ 79 WW 4 @ 99 Udder 9 - 8

CED	BW	WW	YW	MWW	Milk	Marb.	REA	Doc.	Stay.
+15.4	-1.9	+54	+79	+45	+18	+0.4	+0.70	+13	+17

- \* \* **Potential Heifer Bull** - Quad Polled
- \* Jetty possesses a great deal of length along with a very good top. His shape would indicate good calving ease.
- \* The Cathleen female is a beautifully designed cow with a great personality. She has produced 3 top females and a full sister to this bull is a top bred heifer in our herd.

## 50 PRK Jerome 656J \$3000

Red		Polled		75.0% SA		#744633	
Born	BW	205 Wt	Index	11/12 Wt	WDA	Frame	
2/25/21	78 lbs	679 lbs	100	862 lbs	3.32 lbs	5.7	

MAC Decade 140D MAC Frontier 184F MAC Yorann 258Y	MAC Union Station 87U MAC Zoe 503Z MAC Torrington 139T MAC Royann 100R	<b>Dam's Production</b>
SRS Bullseye 592B PRK Savanna 656D PRK 266Z	SOO Line Motive 9016(AN) SRS Juliet 0584R SRS Xtra 0347X PRK Savanna 646S	BW 4 @ 89 WW 4 @ 94 Udder 9 - 9

CED	BW	WW	YW	MWW	Milk	Marb.	REA	Doc.	Stay.
+11.2	+0.1	+54	+75	+42	+15	+0.3	+0.73	+11	+15

- \* **Twin**
- \* A Frontier son with good thickness of top and lower quarter.
- \* His mother is an SRS Bullseye female who has very good length and thickness along with an excellent designed udder.

## 51 PRK Joule 737J \$2500

Red		Polled		75.0% SA		#744356	
Born	BW	205 Wt	Index	11/12 Wt	WDA	Frame	
3/12/21	98 lbs	743 lbs	106	824 lbs	3.36 lbs	6.4	

MAC Decade 140D MAC Frontier 184F MAC Yorann 258Y	MAC Union Station 87U MAC Zoe 503Z MAC Torrington 139T MAC Royann 100R	<b>Dam's Production</b>
SRS Cinch 0778C PRK Jasmine 737E PRK Jasmine 967W	SRS Ariat 270A SRS Pony Tail 0778T Big Sky Triton 40R PRK 392N	BW 3 @ 88 WW 3 @ 104 Udder 8 - 7

CED	BW	WW	YW	MWW	Milk	Marb.	REA	Doc.	Stay.
+12.9	-0.3	+57	+82	+46	+18	+0.3	+0.71	+21	+16

- \* Quad Polled
- \* Typical of the MAC Frontier offspring he has a very attractive profile with super length.
- \* His dam has good rib depth and length. She is a good producing young female who has a quality yearling in our bred heifers.



# Salers

## 52 PRK Jet Black 1120J \$3000

Hom Black		Polled		75.0% SA		#744630	
Born	BW	205 Wt	Index	11/12 Wt	WDA	Frame	
3/13/21	94 lbs	796 lbs	114	910 lbs	3.73 lbs	6.7	

Connealy Greeley <b>SRS Dundee 270D</b> SRS Finicky 0838U*		Connealy Confidence 0100 Precious of Conanga 0484 CRO Survey 615S SRS Finicky 9809H *		<b>Dam's Production</b>							
SRS Wyoming 9939W <b>PRK Kyla 120Y</b> PRK Kyla 920W		MAC Torrington 139T SRS Camelot 9939J DJF Rolan 5002R PRK Kyla 520R		<table border="1"> <tr><th>BW</th><td>9 @ 80</td></tr> <tr><th>WW</th><td>9 @ 100</td></tr> <tr><th>Udder</th><td>8 - 8</td></tr> </table>		BW	9 @ 80	WW	9 @ 100	Udder	8 - 8
BW	9 @ 80										
WW	9 @ 100										
Udder	8 - 8										

CED	BW	WW	YW	MWW	Milk	Marb.	REA	Doc.	Stay.
+13.5	0.0	+52	+72	+41	+16	+0.4	+0.57	+4	+15

- \* Quad Polled
- \* A bigger framed bull with performance to add pounds to your calves at weaning.
- \* His Purebred Salers dam is an attractive, feminine female with good milk and a very solid udder.

## Brother to Lot #52 - SRS Dundee son



August 2021

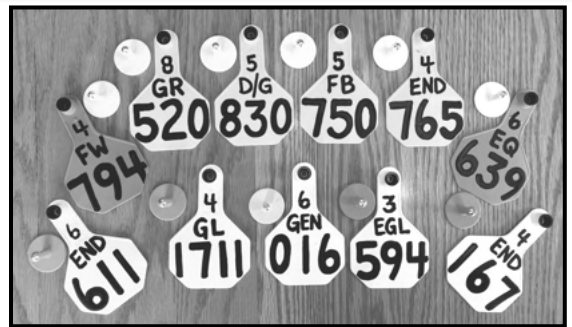
## 53 PRK Juniper 252J \$2500

Red		Scurred		75.0% SA		#744296	
Born	BW	205 Wt	Index	11/12 Wt	WDA	Frame	
3/1/21	92 lbs	668 lbs	95	846 lbs	3.30 lbs	5.7	

MAC Anders 29A <b>PRK Gold Rush 213G</b> PRK Montana 213Z		MAC Centurion 240X WJM Uriah 249U* TSB Outback 132U PRK Montana 813U		<b>Dam's Production</b>							
SRS WDA 270W <b>PRK Robbie 252Z</b> PRK Robbie 852U		S A V 004 Density 4336 SRS Footloose 9927J SRS Sequel 0122S PRK Robbie 562R		<table border="1"> <tr><th>BW</th><td>8 @ 84</td></tr> <tr><th>WW</th><td>7 @ 97</td></tr> <tr><th>Udder</th><td>9 - 9</td></tr> </table>		BW	8 @ 84	WW	7 @ 97	Udder	9 - 9
BW	8 @ 84										
WW	7 @ 97										
Udder	9 - 9										

CED	BW	WW	YW	MWW	Milk	Marb.	REA	Doc.	Stay.
+16.2	-2.0	+49	+72	+41	+17	+0.4	+0.72	+12	+20

- \* **Potential Heifer Bull** - Quad Polled
- \* A square made bull with lots of thickness of top and hip.
- \* Juniper's dam is an ideal looking female with tremendous thickness, depth, and length in a moderate frame. She milks well and has an ideal udder that is holding up with age.
- \* Her son, PRK Duracell 252D, is still walking the breeding pastures here at Parke Ranch.
- \* Juniper's sire, PRK Gold Rush 213G, was a top selling bull in our 2019 Production Sale to Silver Spur Salers & ELS Live-stock.



## 54 PRK Journalist 708J \$3000

Hom Black		Polled		PB Salers		#744350	
Born	BW	205 Wt	Index	11/12 Wt	WDA	Frame	
2/27/21	82 lbs	667 lbs	95	808 lbs	3.13 lbs	5.9	

MAC Centennial 167C <b>MAC Earthquake 158E</b> MAC Zinnia 207Z		Thats Zeplin 134Z MAC Wynne 258W WHR Wyo Diamond MAC Von 383X		<b>Dam's Production</b>							
NJF Boulder 46B <b>PRK Twilight 708E</b> PRK Twilight 108Y		NJF Top Level 41T NJF Miss Mercury 292Z SRS Wyoming 9939W PRK Twilight 928W *		<table border="1"> <tr><th>BW</th><td>3 @ 78</td></tr> <tr><th>WW</th><td>2 @ 96</td></tr> <tr><th>Udder</th><td>9 - 8</td></tr> </table>		BW	3 @ 78	WW	2 @ 96	Udder	9 - 8
BW	3 @ 78										
WW	2 @ 96										
Udder	9 - 8										

CED	BW	WW	YW	MWW	Milk	Marb.	REA	Doc.	Stay.
+15.4	-1.3	+55	+73	+44	+16	+0.3	+0.72	+7	+15

- \* \* \* **Potential Heifer Bull** - Quad Polled
- \* Journalist has a lot of potential as a Purebred heifer bull herd sire. He is a very attractively profiling bull with good thickness and a balanced phenotype.

## PRK Duracell 252D - Lot #53's Brother



Semen Available

## PRK Gold Rush 213G - Lot #53's Sire



# Bred Heifers

## Parke Ranch Bred Sale Heifers

Most of these heifers were bred, born, and raised here on our ranch. Last fall we did pick a few heifers from a long time commercial customer, Dustin & Shannon McCollum. The 10 heifers with a commercial sire came from their program. They were all developed together through the winter on long stem grass hay. They have not been fed any concentrates or supplements other than mineral. These heifers sell as commercial heifers even though several of them are registered females and siblings to the bulls selling in this and past sales. They are bred to calving ease sires for both AI and clean-up bulls. You can find most of their service sires listed following the heifer lots or in the Reference Sire section before the bull lots. They were ultra sounded for calving dates on Aug. 10th after a 60 day breeding season. We have sorted the heifers into smaller groups by calving dates. They will sell in the silent auction along with the bulls. The heifers have base prices listed with each group on a per head basis. The bidding will proceed with \$25 per head bid increases until the close of the sale at 2 pm on Dec. 15th, in the same format as the bulls. We would ask that you make arrangements to pick up your heifers by the end of the year. A video of the heifer lots will be available on our web site or you may come at any time to view the heifers.



### Group A

**\$ 1500**

Number	Sire	Color	% Salers	Bred To	Due Date	Calf %	Ave. WT
<b>120Y</b>	SRS Dundee	Black	3/4	SRS Forward	2/15	5/8	11/3/21
<b>146Y</b>	PRK Duracell	Black	1/2	PRK Flint	2/22	1/2	1065 lbs
<b>445G</b>	MAC Frontier	Black	3/4	PRK Halfback	2/23	5/8	
<b>475W</b>	Commercial	Black	1/2	PRK Flint	2/21	1/2	
<b>565W</b>	Commercial	Black	1/2	PRK Flint	2/12	1/2	
<b>1845W</b>	Commercial	Black	1/2	SRS Guideline	2/16	1/2	



### Group B

**\$ 1500**

Number	Sire	Color	% Salers	Bred To	Due Date	Calf %	Ave. WT
<b>036G</b>	SRS Forward	Black	5/8	SRS Guideline	2/14	5/8	11/3/21
<b>150Y</b>	SRS Dundee	Black	1/2	PRK Flint	2/22	1/2	1215 lbs
<b>583W</b>	Commercial	Black	1/2	SRS Guideline	2/22	1/2	
<b>725Y</b>	MAC Frontier	Black	PB	SRS Forward	2/12	3/4	
<b>861G</b>	PRK Flint	Black	1/2	MAC Humboldt	2/17	1/2	



### Group C

**\$ 1500**

Number	Sire	Color	% Salers	Bred To	Due Date	Calf %	Ave. WT
<b>408Y</b>	MAC Frontier	Black	PB	SRS Forward	3/2	3/4	11/3/21
<b>689G</b>	SRS Forward	Black	1/2	PRK Halfback	3/14	1/2	1085 lbs
<b>817G</b>	DJF Daybreak	Black	PB	PRK Halfback	3/7	3/4	
<b>887G</b>	GGT Final Choice	Black	5/8	PRK Halfback	3/14	5/8	
<b>0741G</b>	MJB Gladiator	Black	5/8	SRS Forward	3/4	5/8	



# Bred Heifers



## Group D

**\$ 1500**

Number	Sire	Color	% Salers	Bred To	Due Date	Calf %	Ave. WT
<b>471Y</b>	GGT Final Choice	Black	1/2	SRS Guideline	3/10	1/2	11/3/21
<b>579G</b>	SRS Dundee	Black	1/2	SRS Forward	3/13	1/2	1175 lbs
<b>807G</b>	MAC Anders	Black	PB	MJB Headliner	3/15	PB	
<b>923G</b>	MAC Frontier	Black	PB	MJB Headliner	3/21	PB	



## Group E

**\$ 1500**

Number	Sire	Color	% Salers	Bred To	Due Date	Calf %	Ave. WT
<b>071Y</b>	SRS Cinch	Red	1/2	SRS Forward	2/16	1/2	11/3/21
<b>371Y</b>	PRK Duracell	Red	1/2	SRS Hoosier	3/6	1/2	1090 lbs
<b>511Y</b>	MAC Frontier	Red	PB	MJB Headliner	2/25	PB	
<b>656Y</b>	SRS Cinch	Red	1/2	PRK Halfback	3/8	1/2	
<b>1684W</b>	Commercial	Red	1/2	PRK Flint	3/3	1/2	



## Group F

**\$ 1450**

Number	Sire	Color	% Salers	Bred To	Due Date	Calf %	Ave. WT
<b>454W</b>	Commercial	Black	1/2	PRK Halfback	3/23	1/2	11/3/21
<b>469W</b>	Commercial	Black	1/2	PRK Halfback	4/8	1/2	1080 lbs
<b>471W</b>	Commercial	Black	1/2	PRK Halfback	3/31	1/2	
<b>572W</b>	Commercial	Black	1/2	SRS Forward	4/8	1/2	
<b>1808W</b>	Commercial	Black	1/2	PRK Halfback	4/1	1/2	



## Group G

**\$ 1450**

Number	Sire	Color	% Salers	Bred To	Due Date	Calf %	Ave. WT
<b>594G</b>	MAC Enduro	Black	1/2	SRS Guideline	4/15	1/2	11/3/21
<b>653G</b>	SRS Domino	Black	1/2	PRK Halfback	4/11	1/2	1135 lbs
<b>803G</b>	DJF Daybreak	Black	PB	PRK Flint	4/17	3/4	
<b>810G</b>	MAC Anders	Black	PB	PRK Halfback	4/4	3/4	
<b>835G</b>	SRS Forward	Black	1/2	SRS Guideline	4/18	1/2	

# Parke Ranch Reference Service Sires

**PRK Flint 198F**



Semen Available

**Black Polled Optimizer #724634**

CED	BW	WW	YW	MWW	Milk	Fat	REA	Marb.	Doc.	Stay.
+16.9	-4.9	+46	+60	+37	+14	-0.05	+0.53	+0.3	+21	+14

**SRS Guideline 7126G**



Semen Available

**Black Polled Optimizer #732117**

CED	BW	WW	YW	MWW	Milk	Fat	REA	Marb.	Doc.	Stay.
+11.3	-4.1	+56	+79	+50	+22	-0.04	+0.48	+0.4	+21	+15

**MJB Headliner 300H**



**Black Polled PB Salers #737121**

CED	BW	WW	YW	MWW	Milk	Fat	REA	Marb.	Doc.	Stay.
+14.2	-0.6	+59	+78	+47	+17	-0.11	+0.95	+0.4	+10	+16

**PRK Halfback 440H**

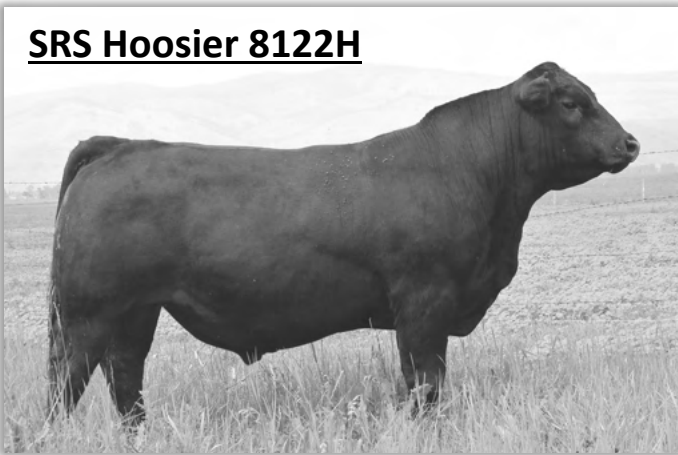


Calf Picture

**Hom. Black Polled Optimizer #737482**

CED	BW	WW	YW	MWW	Milk	Fat	REA	Marb.	Doc.	Stay.
+14.9	-1.2	+60	+88	+48	+18	-0.05	+0.56	+0.4	+19	+20

**SRS Hoosier 8122H**



**Black Polled Optimizer #739934**

CED	BW	WW	YW	MWW	Milk	Fat	REA	Marb.	Doc.	Stay.
+13.8	-0.5	+59	+88	+50	+20	-0.04	+0.56	+0.4	+6	+11

**DJF Garner 816G**



**Hom. Black Polled Optimizer #734731**

CED	BW	WW	YW	MWW	Milk	Fat	REA	Marb.	Doc.	Stay.
+7.9	+3.6	+72	+107	+55	+19	-0.05	+0.98	+0.3	+7	+15





WE

THANK

YOU!





**Parke Ranch**  
**Eaf & Tiffany Parke**  
**7 Peppergrass Lane**  
**Drummond, MT 59832**



# Parke Ranch

**Maternal Power  
Production Sale**

**Dec 7th thru 15th, 2021  
Drummond, Montana**



**Lot #17**



**We Believe In....  
Will Represent Honestly....  
And Stand Behind Our Cattle!**

*Eaf & Tiffany Parke Family*