

2017 Parke Ranch Maternal Power Bull Sale

Silent Auction Format

December 5th thru 13th, 2017

At the Ranch - Drummond, Mt

1516E

40 Bulls Sell

Salers & Optimizers

Eaf & Tiffany Parke

7 Peppergrass Lane

Drummond, Montana

406-288-3573 or 406-240-4167

parkeranch@gmail.com

www.parkeranch.com

November 2017

Dear Cattlemen,

Our family here at Parke Ranch would like to welcome you to our second silent auction Production Sale. We appreciate your interest and past support of our program. We feel that this silent auction sale format over several days allows you to view the sale bulls and cow herd at your convenience. It also allows you to make unpressured decisions about the herd sires that can move your breeding program forward.

We have been raising registered Salers genetics for over 20 years and are excited about the bulls we have to offer for sale this year. We feel they have a lot to offer the cattle industry and your breeding programs. They have been produced by a solid set of females which have been built with profit producing traits in mind and a balanced approach. The Salers cattle excel at many of the most economically relevant traits in the industry, including: fertility, longevity, calf survivability, efficiency, and maternal ability. Many of these Optimizer bulls are multiple generations deep in Salers X Angus genetics. They have been bred for consistency and the complimentary attributes of the 2 breeds with the added benefits of heterosis. The advantages of hybrid vigor are truly one of the very few "free lunches" that can be found in the cattle business. These Optimizer bulls can be equally successful in either a maternal focused program or one designed for performance and carcass quality. They truly are the most versatile option in the cattle industry for both the cow/calf producer or the feeder.

This year has been an interesting and challenging one for many throughout the west. We have had a few challenges here as well between a big storm in mid June that brought several days of flooding (which we were glad to have gotten as the summer progressed), to a very dry and hot late summer that was filled with fire and non stop smoke for several weeks. It now appears that winter has arrived a little early making sale preparations a little more difficult. It has been encouraging to see the cattle market rebound some this year and the increased strength that feeder cattle have experienced this fall. It is making the future look more encouraging!

We greatly enjoy talking about or looking at cattle, so feel free to give us a call or come visit anytime! We hope to see you in December and are always willing to assist in any way possible. We will answer any questions you may have and always strive to represent our cattle honestly. Thank you for your time and interest in our program!

Sincerely, *Eaf & Tiffany Parke and Family*

Parke Ranch is located in the Flint Creek Valley of Western Montana just South of Drummond. Take the Drummond exit off of Interstate 90 and head south on Montana Highway One towards Philipsburg. After 2.6 miles turn East on Mullan Rd and travel 1.5 miles and we are on the left.

Sale Procedure:

*Bulls will sell in a silent auction format with bidding opening at noon on Dec. 5, 2017.

*Bulls have a starting base price which is listed in the catalog. (\$2500, \$3000, or \$3500) The 3 price groups have remained the same from last year.

*Buyers may place a bid at base price on any bull without a bid or raise the bid by \$100 on any bulls with a bid. Bidding will continue until the sale closes at 2 pm on Dec. 13th

*Bids may be placed via phone, text, email, or in person anytime during the sale.

*Any bulls receiving a raising bid on Wednesday Dec. 13th will be involved in an oral bid off between the last bidder before the 13th and any bidders on the 13th before 2 pm. Bid offs will be handled in order of price and as quickly as the contending bidders can be reached following the close of the auction. Bulls without further bids on the 13th will be considered sold to the highest bidder at 2 pm on the 13th. Any bulls without a base bid will be available at base price. (To avoid bid offs we would encourage bidding early in the sale process so if needed you may move to other bull choices)

*A spreadsheet of sale bulls with current bids will be updated daily and available to view at www.parkeranch.com.

*You may view the bulls at your convenience at any time now or during the sale. Please call at any time if you have questions or need updates.

* A video of all sale bulls along with updated weights will be available by the end of November at www.parkeranch.com.

Bull History & Development

*All bulls were born in the first 23 days of the calving season (2 yr old females started 10 days earlier). We took actual birthweights with a scale within 24 hours as well as collected and recorded more than 20 other pieces of data on them and their dams.

*They were raised on milk and grass without any creep feed.

*Bulls were weaned Oct. 6th and are being fed free choice long stem grass hay and 5 lbs of bull challenger pellets per day.

*Bulls will be fed throughout the winter for a 2.8 lbs/day gain to ensure soundness.

*They will be semen tested in March and be vaccinated and ready to go to work.

* All double black bulls were DNA tested for coat color and those who were found to be homozygous black are designated as such in the catalog (HomBlk).

Sale Terms & Details

*Bulls will be fed free of charge and at our risk until delivery beginning in mid March . Up to 500 miles will be at no cost to the buyer with additional mileage at cost.

*1/2 of the purchase price will be due at sale time with the balance due at delivery.

*We are retaining 1/3 semen interest on all bulls and will collect semen before delivery, at our cost, on any we desire to use AI in our program. You have full salvage value.

*All bulls are guaranteed for the first breeding season for disposition, structural soundness, and fertility.

Reference Sires

SRS Bullseye 592B

Black Polled 50% Salers Born 2/13/14 Reg. #696436 Tattoo:SRS592B

HF Kodiak 5R

Soo Line Motive 9016 (AN)

TLA Beauty 5R

MAC Lansing 302L

SRS Juliet 0584R

SRS Juliet 9609F



CED	BW	WW	YW	MWW	Milk	Scrotal	Fat	REA	Marbling
0.0	+2.0	+39	+74	+40	+20	+0.2	+0.01	-0.03	+0.7

SRS Benchmark 8105B

Black Homozygous Polled 50% Salers Born 2/18/14 Reg. #696683 Tattoo:SRS8105B

Sitz Uncommon (AN)

SRS Zeus 0509Z

PRK Miss Montana 503R*

SRS Saint 0218S

SRS Shannon 8105U*

SRS Shannon 0660S



CED	BW	WW	YW	MWW	Milk	Scrotal	Fat	REA	Marbling
+0.5	+1.5	+65	+108	+57	+24	+0.7	-0.01	-0.02	+0.8

MJB Elway 322C

Homozygous Black Polled 56% Salers Born 2/13/15 Reg. #704219 Tattoo:MJB322C

MAC F1 Sundance 4S

MAC Quarterback 58Y

WJM Wilma 120W

TSB Tulsa 82W

MJB Yellow Rose 156Z

MIS 92F Masterpiece 57H



CED	BW	WW	YW	MWW	Milk	Scrotal	Fat	REA	Marbling
+1.4	-0.5	+45	+89	+43	+20	+0.0	+0.02	+0.01	+1.4

Reference Sires

DJF Border Line 815A

Red Homozygous Polled 50% Salers Born 2/06/14 Reg. #694425 Tattoo:DJF815A

TR Colt 45 UT804
C-Bar Evolution 107Y (AR)
LGS Abby 689S

S Nebraska 330N
STCY Unity 815U
STCY Natalie 315N



CED	BW	WW	YW	MWW	Milk	Scrotal	Fat	REA	Marbling
+0.6	+0.8	+59	+99	+49	+19	0.0	+0.01	+0.03	+0.1

NJF Boulder 46B

Black Polled PB Salers Born 1/30/14 Reg. #700335 Tattoo:NJF46B

GGT P Blk Quantum 207M
NJF Top Level 41T
NJF Miss Feist 215M

KKCC Mercury 416P
NJF Miss Mercury 292Z
NJF Miss Pathfinder 7009



CED	BW	WW	YW	MWW	Milk	Scrotal	Fat	REA	Marbling
+2.3	-1.9	+36	+65	+37	+20	+0.0	+0.01	+0.15	-0.4

PRK Ace 081A

Hom. Black Hom. Polled 49.9% Salers Born 2/15/13 Reg. #687625 Tattoo:PRK081A

SRS Uprising 0059U
PRK Yellowstone 966Y
PRK Recipe 966W*

SRS Unreal 0151U
PRK Gina 081X
PRK Gina 9713G



CED	BW	WW	YW	MWW	Milk	Scrotal	Fat	REA	Marbling
+2.1	-1.9	+40	+81	+40	+20	+0.4	+0.01	-0.07	+1.2

428E PRK Explosive 428E \$3500

Red Pld 56.3% Salers #717783

Soo Line Motive(AN)	Born	2/16/17
SRS Bullseye 592B	BW	93 lbs
SRS Juliet 0584R	205 Wt	777 lbs
SRS Zeus 0509Z	Index	110
PRK Bonnie 428B	11/10 Wt	1020
PRK Molly 828U	WDA	3.82 lbs
	Frame	6.3

BW +1.7 WW 44 YW 84 MWW 42 Milk 20

Dam's Prod: BW 2@91lbs WW 2@107

- * Quad polled
- * This bull is extremely long bodied, wide topped, and powerful.
- * He and his dam were shown by our son, Scott, at our fair this summer and received a purple ribbon.
- * His maternal grand dam is our daughter Melanie's 2 time grand champion female at the Tri-County Fair.

1516E PRK Excel 1516E \$3500

Blk Pld 49.7% Salers #716628

Soo Line Motive(AN)	Born	2/18/17
SRS Bullseye 592B	BW	93 lbs
SRS Juliet 0584R	205 Wt	751 lbs
PRK Ace 081A	Index	106
PRK Lady 1516C	11/10 Wt	890
PRK Lady 886U	WDA	3.36 lbs
	Frame	5.9

BW +1.1 WW 46 YW 86 MWW 45 Milk +22

Dam's Prod: BW 1@93 lbs WW 1@106

- * Quad Polled
- * A very correct made and attractive bull that has been a standout since birth.
- * His dam is a very feminine, stylish female with a tremendous udder.
- * A very consistent and productive cow family. His grand dam is the dam of 886E in this sale.



PRK Explosive 428E Sept. 2017



PRK Explosive 428E & dam Sept. 2017



PRK Excel 1516E Sept. 2017



PRK Excel 1516E & dam Sept. 2017

463E PRK Expert 463E \$3000

Red Pld 50.1% Salers #717733

Soo Line Motive(AN) **Born** 2/23/17
SRS Bullseye 592B **BW** 97 lbs
 SRS Juliet 0584R **205 Wt** 763 lbs
Index 108
 SRS Spartacus 0670Z **11/10 Wt** 864
PRK Cathleen 463B **WDA** 3.32 lbs
 PRK Cathleen 163Y **Frame** 6.2



PRK Expert 463E Sept. 2017

BW +2.2 WW 52 YW 96 MWW 47 Milk 21

Dam's Prod: BW 2@ 85 lbs WW 2@ 106

- * Quad Polled
- * Expert is a balanced well made bull that has good thickness.
- * His dam is a good young female whose first calf is in our bred heifer group. She has a perfect udder which is typical of the Spartacus daughters.
- * Bullseye calves are consistent in their thickness and shape.

364E PRK Eureka 364E \$3500

HomBlk P/S 52.6 %Salers #716686

Soo Line Motive(AN) **Born** 2/26/17
SRS Bullseye 592B **BW** 82 lbs
 SRS Shannon 8105U **205 Wt** 709 lbs
Index 100
 SRS United 0653U **11/10 Wt** 912
PRK Holly 364A **WDA** 3.55 lbs
 PRK Holly 464P **Frame** 6.3

BW +1.3 WW 45 YW 81 MWW 44 Milk +22

Dam's Prod: BW 3@78 lbs WW 3@100

- * Quad Polled
- * **Potential Heifer Bull**
- * A good looking bull that should work on heifers and still put some pounds on his calves.
- * His dam has put 3 bulls in our sale now with last years selling to McCollum's.



PRK Express 999E Sept. 2017

999E PRK Express 999E \$3500

HomBlk Pld 50.6% Salers #716619

Soo Line Motive(AN) **Born** 2/24/17
SRS Bullseye 592B **BW** 87 lbs
 SRS Juliet 0584R **205 Wt** 731 lbs
Index 104
 SRS Marksman 0059M **11/10 Wt** 918
PRK Kit 999W **WDA** 3.54 lbs
 PRK Kit 245M **Frame** 6.5

Dam's Prod: BW 7@82 lbs WW 7@102

- * Quad Polled
- * This bull has tremendous length of body with a good top and quarter.
- * He has a very easy going personality.
- * His dam is a no miss female. She has 5 females still in our herd and her only other bull calf was our only ever entry in the National Western Salers Sale. Her grandson was our top selling bull last year.

843E PRK Electric 843E \$3000

Red Pld 50% Salers #716621

Soo Line Motive(AN) **Born** 2/28/17
SRS Bullseye 592B **BW** 92 lbs
 SRS Juliet 0584R **205 Wt** 717 lbs
Index 102
 PRK Remington 312R **11/10 Wt** 892
PRK Cathleen 843U **WDA** 3.50 lbs
 PRK Cathleen 394N(AR) **Frame** 5.7



PRK Enterprise 187E Sept. 2017

BW +1.6 WW 43 YW 76 MWW 43 Milk 22

Dam's Prod: BW 8@86 lbs WW 8@103

- * Quad Polled
- * A thick, moderate framed bull that is very square made.
- * His dam is a good milking, very deep and thick female.
- * Cathleen is a top cow in our herd whose 8 calves have all been keepers.

492E PRK Exact 492E \$2500

Blk Pld 52.3% Salers #716627

Soo Line Motive (AN) **Born** 3/4/17
SRS Bullseye 592B **BW** 90 lbs
 SRS Juliet 0584R **205 Wt** 687 lbs
Index 97
 OPP Saber 847U **11/10 Wt** 826
PRK Unity 492B **WDA** 3.29 lbs
 PRK Unity 092X **Frame** 5.8

BW +0.6 WW 37 YW 77 MWW 39 Milk 20

Dam's Prod: BW 2@85 lbs WW 2@97

- * Triple Polled
- * Another Bullseye son with a powerful hip and good thickness.

**187E PRK Enterprise 187E \$3500**

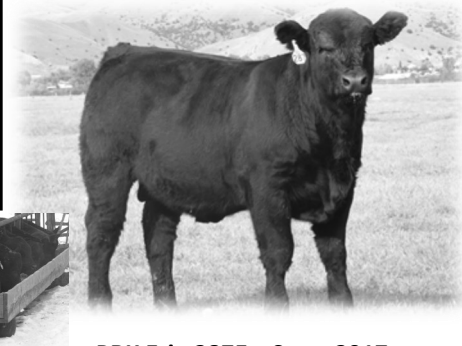
Blk Pld 50.3% Salers #716622

Soo Line Motive(AN) **Born** 3/1/17
SRS Bullseye 592B **BW** 85 lbs
 SRS Juliet 0584R **205 Wt** 690 lbs
Index 98
 SRS United 0653U **11/10 Wt** 896
PRK Julie 187Y **WDA** 3.53 lbs
 PRK Julie 787T **Frame** 6.0

BW -0.3 WW 37 YW 74 MWW 39 Milk 21

Dam's Prod: BW 5@79 lbs WW 5@99

- * Quad Polled
- * Enterprise is an attractive profiling bull with good length and top.
- * May work on larger framed heifers.
- * His mother is a feminine female with an excellent udder and disposition.



PRK Erie 287E Sept. 2017



PRK Elite 373E Sept. 2017

373E PRK Elite 373E \$3500

Red Pld 49.2% Salers #716626

SooLine Motive9016 **Born** 3/19/17
BW 88 lbs
SRS Bullseye 592B **205 Wt** 803 lbs
Index 114
11/10 Wt 910
WDA 3.86 lbs
PRK Pigeon 373A **Frame** 6.4
PRK Pigeon 873U

BW +1.3 WW 54 YW 98 MWW 50 Milk 23

Dam's Prod: BW 3@76 lbs WW 3@106

- * Quad Polled
- * Elite is a long, stout made red bull with great thickness and easy going personality
- * He is the highest weaning bull in the sale
- * His dam is another great United daughter with lots of milk and an excellent disposition.
- * A full sister to Elite is one of our top replacement heifers this year.



PRK Excite 594E Sept. 2017

287E PRK Erie 287E \$3000

Blk Pld 50.6% Salers #716625

SooLine Motive9016 **Born** 3/18/17
BW 98 lbs
SRS Bullseye 592B **205 Wt** 749 lbs
Index 106
11/10 Wt 910
WDA 3.84 lbs
PRK Gina 287Z **Frame** 6.3
PRK Gina 087X

BW +1.4 WW 49 YW 93 MWW 43 Milk 18

Dam's Prod: BW 4@86 lbs WW 4@103

- * Quad Polled
- * Here is a meat wagon of a bull with tremendous performance and 3rd highest WDA of sale bulls.
- * His dam is a moderate young female who has great milk and a super udder.
- * This cow family is a big part of our herd and this female is adding to it. Her first 3 daughters are all in the herd and a grandson is bull 474E in the sale.

594E PRK Excite 594E \$3500

HomBlk Pld 51.2% Salers #716596

SRS Zeus 0509Z **Born** 2/14/17
BW 84 lbs
SRS Benchmark 8105B **205 Wt** 745 lbs
Index 106
11/10 Wt 926
WDA 3.44 lbs
PRK Holly 594C **Frame** 6.1
PRK Holly 794T

BW +0.2 WW 56 YW 100 MWW 51 Milk 23

Dam's Prod: BW 1@84 lbs WW 1@106

- * Quad Polled
- * A moderate BW bull with good performance out of a first calf heifer. He is a very attractive and balanced bull.
- * The Benchmark calves are well made long bodied bulls with good performance.
- * His dam is thick made with a good udder.

533E PRK Emblem 533E \$2500

Red Pld 62.5% Salers #716597

SRS Zeus 0509Z **Born** 2/20/17
BW 83 lbs
SRS Benchmark 8105B **205 Wt** 687 lbs
Index 97
11/10 Wt 864
WDA 3.29 lbs
PRK Montana 533C **Frame** 5.4
PRK Montana 213Z

BW 0.0 WW 48 YW 86 MWW 48 Milk 24

Dam's Prod: BW 1@83 lbs WW 1@97

- * Quad Polled
- * **Potential Heifer Bull**
- * Good length of body and excellent disposition in this light birthweight bull.
- * His dam is a beautiful 2 year old with an excellent udder and sweet personality. Her maternal brother sells in this sale as 213E.

366E PRK England 366E \$3000

Blk Pld 49.8% Salers #716593

SRS Zeus 0509Z **Born** 3/4/17
BW 87 lbs
SRS Benchmark 8105B **205 Wt** 671 lbs
Index 95
11/10 Wt 840
WDA 3.35 lbs
PRK Lady 366A **Frame** 5.9
PRK Lady 066X

BW +0.9 WW 46 YW 85 MWW 44 Milk 21

Dam's Prod: BW 3@89 lbs WW 3@98

- * Quad Polled
- * A well made and balanced bull.
- * His dam is a very deep bodied and moderate framed ,thick cow.



198E PRK Email 198E \$2500

Blk Pld 48.4% Salers #716592

SRS Zeus 0509Z **Born** 3/4/17
BW 78 lbs
SRS Benchmark 8105B **205 Wt** 683 lbs
Index 97
11/10 Wt 832
WDA 3.31 lbs
PRK Virginia 198Y **Frame** 5.6
PRK Virginia 898U

BW -0.7 WW 51 YW 83 MWW 48 Milk 23

Dam's Prod: BW 5@86 lbs WW 5@102

- * Quad Polled
- * **Potential Heifer Bull**
- * Dam is a long bodied, heavy milking female with a great udder.
- * Her 2 heifers are both cows in our herd and her 2 bulls have both sold in our sales. Her maternal sister has a bull selling as 098E.

367E PRK Ekalaka 367E \$2500

HomBlk Pld 49.3% Salers #716594

SRS Zeus 0509Z **Born** 3/4/17
BW 90 lbs
SRS Benchmark 8105B **205 Wt** 667 lbs
Index 94
11/10 Wt 808
WDA 3.22 lbs
PRK Glasgow 367A **Frame** 5.4
PRK Glasgow 167Y

BW +0.3 WW 45 YW 82 MWW 40 Milk 18

Dam's Prod: BW 3@82 lbs WW 3@99

- * Quad Polled
- * A beautiful smaller framed cow that has good milk and an ideal udder. The WDA females are consistently moderate and perfect uddered.

474E PRK Eagle 474E \$2500

Blk P/S 56.3% Salers #716678

MAC Quarterback 58Y	Born 2/20/17
MJB Elway 322C	BW 92 lbs
MJB Yellow Rose 156Z	205 Wt 700 lbs
	Index 99
Opp Saber 847U	11/10 Wt 868
PRK Gina 474B	WDA 3.30 lbs
PRK Gina 287Z	Frame 5.6

**PRK 287E & PRK 463E**

BW +0.1 WW 45 YW 90 MWW 44 Milk 22

Dam's Prod: BW 2@89 lbs WW 2@103

* Quad Polled

* Here is a smaller framed bull that still has a lot of thickness and a powerful hip and quarter.

* His dam is a young cow from a terrific cow family and has a very good udder. Her maternal brother sells as 287E

* Elway is a bull that we purchased a semen interest in from MJB Salers in the National Western Sale for an outcross.

886E PRK Exxon 886E \$3500

HomBlk P/S 52.4% Salers #716677

MAC Quarterback 58Y	Born 2/24/17
MJB Elway 322C	BW 90 lbs
MJB Yellow Rose 156Z	205 Wt 747 lbs
	Index 106
SRS Policy 9336P	11/10 Wt 950
PRK Lady 886U	WDA 3.67 lbs
PRK Lady 466P	Frame 6.1

BW 0.0 WW 46 YW 90 MWW 46 Milk 23

Dam's Prod: BW 8@89 lbs WW 8@102

* Quad Polled

* Exxon is a very long bodied Elway son who has the thickness and power to sire some high performing calves.

* His dam is a good milking proven cow that always has a top calf. This is her fifth bull calf to make our sale bulls. Her two heifers are both in the herd and one is the mother to the 1516E bull.

480E PRK Emblazon 480E \$3000

HomBlk Horned 52.5% Salers #716585

MAC Quarterback 58Y	Born 2/21/17
MJB Elway 322C	BW 83 lbs
MJB Yellow Rose 156Z	205 Wt 690 lbs
	Index 98
SRS Spartacus 0670Z	11/10 Wt 912
PRK Rosebud 480B	WDA 3.48 lbs
PRK Rosebud 280Z	Frame 6.0

BW -1.0 WW 41 YW 84 MWW 41 Milk 21

Dam's Prod: BW 2@86 lbs WW 2@96

* Potential Heifer Bull

* A lighter birthweight bull that still has some thickness and a good top.

* His dam is a very long bodied female that milks really well. Her first calf is a good looking bred heifer in our herd.

* Elway is stamping his calves with moderate frames that are very thick ended and wide topped.

**PRK Exxon 886E Sept. 2017****378E PRK Elwood 378E \$3000**

HomBlk Pld 52.2% Salers #716605

MAC Quarterback 58Y	Born 2/27/17
MJB Elway 322C	BW 96 lbs
MJB Yellow Rose 156Z	205 Wt 691 lbs
	Index 98
SRS Unreal 0151U	11/10 Wt 870
PRK Suzanne 378A	WDA 3.40 lbs
PRK Suzanne 182Y	Frame 5.8

**PRK Elway 271E Sept. 2017**

BW +1.2 WW 48 YW 91 MWW 40 Milk 16

Dam's Prod: BW 3@91 lbs WW 3@99

* A thick made powerful bull that would work well on a set of Angus cows and keep the calves all black.

* Dam is a very long bodied and thick female with tremendous depth of body.

* Her first 2 heifer calves have been retained as replacements in our herd.

271E PRK Elway 271E \$3500

Blk Pld 52.1% Salers #716604

MAC Quarterback 58Y	Born 2/28/17
MJB Elway 322C	BW 93 lbs
MJB Yellow Rose 156Z	205 Wt 733 lbs
	Index 104
SRS Xpert 0881X	11/10 Wt 914
PRK Roberta 271Z	WDA 3.58 lbs
PRK Roberta 071X	Frame 5.9

BW +1.3 WW 49 YW 96 MWW 43 Milk 19

Dam's Prod: BW 4@92 lbs WW 4@100

* Quad Polled

* Another Elway with lots of thickness of quarter and wide topped.

* His mother is a very nice looking and well made female that has a terrific udder.

* This is an outcross type bull to most of our genetics and probably our top Elway son in this calf crop.

038E PRK Eli 038E \$2500

Blk Pld 59.1% Salers #716603

MAC Quarterback 58Y	Born 3/6/17
MJB Elway 322C	BW 93 lbs
MJB Yellow Rose 156Z	205 Wt 698 lbs
	Index 99
SRS United 0653U	11/10 Wt 820
PRK Treasure 038X	WDA 3.29 lbs
PRK Treasure 741T	Frame 5.6

BW +0.9 WW 44 YW 89 MWW 40 Milk 18

Dam's Prod: BW 6@83 lbs WW 6@97

* Quad Polled

* Another moderate framed Elway son that has some muscle expression and performance for his frame.

* His dam is a deep bodied female that is very balanced in her make up and a very good uddered female.

* This is her first bull calf and all of her 5 heifers were kept as replacements.

**PRK Hannah 729E Border Line daughter**

527E PRK Extra 527E \$3500

Blk Pld 62.5% Salers #716589

C-Bar Evolution (AR)	Born	2/9/17
DJF Border Line 815A	BW	86 lbs
STCY Unity 815U	205 Wt	696 lbs
SRS Yardmarker166Y	Index	99
PRK Jasmine 527C	11/10 Wt	944
PRK Jasmine 967W	WDA	3.45 lbs
	Frame	6.0



PRK Extra 527E Sept. 2017

BW +0.2 WW 49 YW 90 MWW 43 Milk 19

Dam's Prod: BW 1@86 lbs WW 1@99

* Quad Polled

* Extra has just what his name indicates in rib shape and depth of body. He will sire some calves that should push down the scales.

* His 2 yr old dam is a female with good thickness, a great disposition, and a quality udder.

071E PRK Equity 071E \$2500

Red P/S 48.4% Salers #716586

C-Bar Evolution (AR)	Born	3/10/17
DJF Border Line 815A	BW	90 lbs
STCY Unity 815A	205 Wt	708 lbs
PRK Tonka 298T	Index	100
PRK Roberta 071X	11/10 Wt	876
PRK Roberta 561R	WDA	3.58 lbs
	Frame	6.1

BW +1.0 WW 51 YW 89 MWW 41 Milk 16

Dam's Prod: BW 5@86 lbs WW 5@96

* His dam is a very correct made female that has tremendous depth, good thickness and great milk.

* Her 3 daughters have made replacements with 2 of them producing top bull calves this year (271E, 371E)

* Border Line has been siring powerful calves that have good depth and thickness.

384E PRK Edition 384E \$3000

Red Pld 49.8% Salers #716587

C-Bar Evolution (AR)	Born	2/26/17
DJF Border Line 815A	BW	94 lbs
STCY Unity 815U	205 Wt	773 lbs
SRS WDA 270W	Index	109
PRK Lass 384A	11/10 Wt	974
PRK Lass 184Y	WDA	3.79 lbs
	Frame	5.7

BW +1.2 WW 62 YW 107 MWW 48 Milk 17

Dam's Prod: BW 3@90lbs WW 3@105

* Quad Polled

* Top 5 for weaning performance in a very moderate frame.

* If you would like to increase depth of body and capacity in your herd this bull is unmatched in volume.

* His dam is an attractive smaller female with great depth, thickness, and udder.

Spencer & PRK Lass 384D August 2017
Maternal sister to 384E**169E PRK Easton 169E \$2500**

Blk P/S 48.4% Salers #716681

Tombstone 050(AN)	Born	3/10/17
SRS Ariat 270A	BW	93 lbs
SRS Footloose 9927J	205 Wt	735 lbs
PRK Tonka 298T	Index	104
PRK Rebecca 169Y	11/10 Wt	864
PRK Rebecca 569R	WDA	3.53 lbs
	Frame	6.0



SRS Ariat 270A Sire of 169E

Grand sire of several bulls selling

BW +1.4 WW 51 YW 92 MWW 45 Milk 19

Dam's Prod: BW 5@82 lbs WW 5@98

* Quad Polled

* A thick ended bull that will increase weaning weights and is very easy going.

* His Tonka sired dam is a solid good milking and uddered female.

* The Ariat bulls were some of the more popular in last years sale.

454E PRK Einstein 454E \$2500

Red Pld 51.2% Salers #716670

SRS Ariat 270A	Born	3/2/17
SRS Cinch 0778C	BW	71 lbs
SRS Pony Tail 0778T	205 Wt	696 lbs
SRS United 0653U	Index	99
PRK Holly 454B	11/10 Wt	824
PRK Holly 264Z	WDA	3.26 lbs
	Frame	5.6

BW -2.1 WW 45 YW 86 MWW 44 Milk 22

Dam's Prod: BW 2@81 lbs WW 2@106

* Triple Polled

* Potential Heifer Bull

* A very light birthweight bull that still has some performance and eye appeal with an easy going personality.

* He is out of our daughter, Deana's, 4-H cow. He was the champion bull at the Tri-County Fair.

* His dam is a beautiful young female who was the grand champion female at last years fair. She also raised one of our best bulls last year.

447E PRK Engine 447E \$3000

Red Pld 49.8% Salers #716669

SRS Ariat 270A	Born	2/23/17
SRS Cinch 0778C	BW	86 lbs
SRS Pony Tail 0778T	205 Wt	686 lbs
SRS Zip Code 0174Z	Index	97
PRK Annie 447B	11/10 Wt	906
PRK Annie 557R	WDA	3.48 lbs
	Frame	5.5

BW -0.6 WW 42 YW 85 MWW 38 Milk 17

Dam's Prod: BW 2@82 lbs WW 2@95

* Quad Polled

* Engine is a long bodied, thick topped bull in a moderate frame. He has a pedigree that makes him a possible heifer bull on larger heifers.

* Dam is a very long, good milking moderate cow. Had a bull in last years sale.

* Cinch was our pick of bulls in the 2016 Skinner Ranch Seedstock Sale.



Deana with PRK Einstein 454E Aug. 2017



SRS Cinch 0778C Sire of 447E & 454E

172E PRK Edison 172E \$3500

HomBlk Pld 47.8% Salers #716646

SRS Ariat 270A	Born 3/2/17
PRK Captain 098C	BW 96 lbs
PRK Virginia 098X	205 Wt 776 lbs
	Index 110
SRS Unreal 0151L	11/10 Wt 980
PRK Susannah 172Y	WDA 3.87 lbs
PRK Susannah887U*	Frame 6.1

BW +0.9 WW 54 YW 92 MWW 47 Milk 20

Dam's Prod: BW 5@77 lbs WW 5@101

* Quad Polled

* Edison is a lot like his sire with great length and a very wide top and expressive patterned quarter.

* He is the highest WDA bull in the sale. He will certainly sire a powerful set of calves.

* His dam is the daughter of a gold dam and is a heavy milking female with a great maternal background.



PRK Expert 463E and dam Sept. 2017

0557E PRK Ezra 0557E \$2500

Blk P/S 49% Salers #716644

SRS Ariat 270A	Born 2/27/17
PRK Captain 098C	BW 81 lbs
PRK Virginia 098X	205 Wt 669 lbs
	Index 95
Legend's Free Enterprise	11/10 Wt 834
PRK Annie 557R	WDA 3.26 lbs
PRK Annie 395N (AR)	Frame 6.0

BW -0.9 WW 39 YW 75 MWW 38 Milk 18

Dam's Prod: BW 11@83 lbs WW 11@98

* Quad Polled

* **Potential Heifer Bull**

* His dam is a proven older cow that is very deep bodied and easy fleshing who milks well.

* Dam is also the grand dam of the 447E bull in the sale.

332E PRK Enzyme 332E \$2500

Blk Pld 55.3% Salers #716647

SRS Ariat 270A	Born 3/2/17
PRK Captain 098C	BW 84 lbs
PRK Virginia 098X	205 Wt 670 lbs
	Index 95
SRS United 0653U	11/10 Wt 800
PRK Ginger 332A	WDA 3.16 lbs
PRK Ginger 032U	Frame 5.4

BW -0.1 WW 43 YW 81 MWW 40 Milk 18

Dam's Prod: BW 3@87 lbs WW 3@99

* Quad Polled

* A moderate birthweight bull that is very moderate framed.

* His dam has had 3 bull calves that have all made the bull pens.

* PRK Captain was a high performance bull that Skinners purchased from us in our 2015 private treaty sale.



PRK Everett 098E Sept. 2017

098E PRK Everett 098E \$3000

Blk Pld 48.1% Salers #716613

SRS Zeus 0509Z	Born 2/22/17
SRS Battalion 0984B	BW 79 lbs
SRS Seiko 0984W	205 Wt 682 lbs
	Index 97
SRS Uprising 0059U	11/10 Wt 892
PRK Virginia 098X	WDA 3.42 lbs
PRK Virginia 898U	Frame 5.7

BW -1.5 WW 43 YW 83 MWW 42 Milk 21

Dam's Prod: BW 6@90 lbs WW 6@101

* Quad Polled

* **Potential Heifer Bull**

* A moderate made and very thick topped bull.

* His dam is a moderate framed female with as much depth and thickness as any cow we have.

* She is a great milking female who is the dam of PRK Captain 098C.



Scott and Spencer with Scott's pair
PRK Explosive 428E and dam

570E PRK Eugene 570E \$2500

HomBlk Pld 49.4% Salers #716617

SRS Zeus 0509Z	Born 2/16/17
SRS Battalion 0984B	BW 99 lbs
SRS Seiko 0984W	205 Wt 764 lbs
	Index 108
SRS Ariat 270A	11/10 Wt 920
PRK Rosebud 570C	WDA 3.45 lbs
PRK Rosebud 070X	Frame 6.6

BW +1.6 WW 57 YW 105 MWW 51 Milk 23

Dam's Prod: BW 1@99 lbs WW 1@108

* Quad Polled

* If your looking to add some stretch and performance to your calves then Eugene is the bull for you.

* His dam is a well made and deep bodied 2 year old that is very balanced and good uddered.

* Battalion is a lighter birthweight sire who Skinners sold in their 2015 sale and we have used AI.

595E PRK Expand 595E \$3000

HomBlk P/S 55.7% Salers #717735

PRK Yellowstone 966Y	Born 2/10/17
PRK ACE 081A	BW 81 lbs
PRK Gina 081X	205 Wt 715 lbs
	Index 101
SRS Yahtzee 996Y	11/10 Wt 868
PRK Cinderella 595C	WDA 3.18 lbs
PRK Gina 423P	Frame 6.0

BW -1.1 WW 45 YW 86 MWW 42 Milk 19

Dam's Prod: BW 1@81 lbs WW 1@101

* Quad Polled

* **Potential Heifer Bull**

* Should work on heifers while still producing some size and performance in his calves.

* Dam is a moderate, very deep young female who has good thickness and is very heavy milking.

842E PRK Exacta 842E \$3000

Blk P/S 50% Salers #716608

PRK Yellowstone 966Y

Born 3/22/17**PRK ACE 081A****BW** 91 lbs

PRK Gina 081X

205 Wt 768 lbs

SRS Sequel 0122S

Index 109**11/10 Wt** 846**PRK Ginger 842U****WDA** 3.63 lbs

PRK Ginger 9702G

Frame 6.5

Spencer & PRK 263D Aug. 2017
Maternal brother to 263E

BW +1.5 WW 59 YW 105 MWW 50 Milk 21

Dam's Prod: BW 9@89 lbs WW 9@106

* Quad Polled

* A younger bull who is attractive and balanced in his make up. He has terrific performance and the numbers to go with it.

* His dam is a proven female that has as much performance as any cow in the herd. She has lots of depth and length with a good disposition.

263E PRK Embark 263E \$3000

Red Pld 48.3% Salers #716655

SRS Zeus 0509Z

Born 3/8/17**SRS Catalyst 0435C****BW** 83 lbs

SRS Patchwork 0435P

205 Wt 688 lbs

SRS Xtra 0347X

Index 97**11/10 Wt** 868**PRK Pigeon 263Z****WDA** 3.51 lbs

PRK Pigeon 073X

Frame 6.2

BW -1.6 WW 37 YW 76 MWW 38 Milk 19

Dam's Prod: BW 1@80 lbs WW 1@95

* Potential Heifer Bull

* A bull with a consistent light birthweight pedigree and the numbers to go with the look for easy calving.

* His dam is a smaller framed young cow with a very good udder.

* We purchased Catalyst in Skinners 2016 sale for his light birthweight and attractive phenotype.



PRK Embark 263E Sept. 2017

BW -1.1 WW 41 YW 80 MWW 40 Milk 20

Dam's Prod: BW 4@92 lbs WW 4@103

* Quad Polled

* Potential Heifer Bull

* Embark is a smooth made attractive patterned bull.

* His dam is a deep sided long female with lots of milk.

* Her young calf last year was one of Spencer's 4-H steers.

538E PRK Elect 538E \$3000

HomBlk P/S 75% Salers #716676

Opp Eliminator 038X

Born 2/21/17**MAC Capricious 233C****BW** 83 lbs

MAC Anne 149A

205 Wt 764 lbs

SRS Zeus 0509Z

Index 108**11/10 Wt** 894**PRK Gina 538C****WDA** 3.41 lbs

PRK Gina 943W

Frame 6.2

PRK Encore 213E Sept. 2017

BW +0.5 WW 57 YW 103 MWW 50 Milk 21

Dam's Prod: BW 1@83 lbs WW 1@108

* Quad Polled

* A high performing bull with length and good depth.

* His dam is an attractive young cow that is very long and great uddered.

* His dam is a maternal sister to PRK Yes 943Y.

115E PRK Explorer 115E \$3000

HomBlk Pld PB Salers #716638

NJF Top Level 41T

Born 3/2/17**NJF Boulder 46B****BW** 91 lbs

NJF Miss Mercury 292Z

205 Wt 690 lbs

DJF Whiskey River9006

Index 98**11/10 Wt** 856**PRK Hickory 115Y****WDA** 3.38 lbs

PRK Hickory 603S

Frame 6.2

BW +0.9 WW 41 YW 75 MWW 37 Milk 17

Dam's Prod: BW 5@86 lbs WW 5@98

* Quad Polled

* A purebred bull that is balanced and attractive in his profile.

* An easy going bull that had a full brother sell last year.

* His dam is an easy fleshing female that has lots of rib shape and depth. She also has a very nice udder.

213E PRK Encore 213E \$3000

Blk Pld Purebred Salers #716601

Opp Eliminator 038X

Born 3/10/17**MAC Capricious 233C****BW** 99 lbs

MAC Anne 149A

205 Wt 732 lbs

TSB Outback 132U

Index 104**11/10 Wt** 876**PRK Montana 213Z****WDA** 3.58 lbs

PRK Montana 813U

Frame 6.4

BW +2.2 WW 50 YW 90 MWW 50 Milk 26

Dam's Prod: BW 4@92 lbs WW 4@104

* Quad Polled

* A very nice patterned attractive purebred bull with lots of depth and capacity.

* His dam is becoming one of our very top purebred females who had a top performing bull last year as well.

* She is also the grand dam to the 533E bull in the sale.



PRK Explorer 115E Sept. 2017

821E	PRK Eclipse 821E	\$3500	504E	PRK Ebay 504E	\$3000
Blk P/S Purebred Salers	#716687		Blk Pld 75% Salers	#716673	
NJF Top Level 41T	Born 3/5/17		SRS Saint 0218S	Born 2/17/17	
NJF Boulder 46B	BW 88 lbs		SRS United 0653U	BW 96 lbs	
NJF Miss Mercury 292Z	205 Wt 756 lbs		SRS Starr 0653S*	205 Wt 793 lbs	
SRS Nokia 9722N	Index 107		SRS Yuma 072Y	Index 112	
PRK Heavenly 821U	11/10 Wt 880		PRK Dutchess 504C	11/10 Wt 994	
PRK Heavenly 631S	WDA 3.52 lbs		PRK Dutchess 314N	WDA 3.74 lbs	
	Frame 6.4			Frame 6.3	
BW +0.1 WW 44 YW 77 MWW 47 Milk 25			BW +2.1 WW 63 YW 112 MWW 53 Milk 21		
Dam's Prod: BW 8@92 lbs WW 8@105			Dam's Prod: BW 1@96 lbs WW 1@112		
* Triple Polled			* Quad Polled		
* Eclipse is a purebred bull with tremendous thickness of top and quarter. A balanced and well made bull you will find.			* The 2nd heaviest bull currently with big growth numbers. He has a tremendous amount of volume and capacity.		
* His dam is a heavy milking, easy fleshing and deep bodied female that has stood the test of time in our herd.			* His dam is a larger framed purebred female with lots of length and growth.		

Our family wants to express our sincere appreciation for your interest and support of our program!
It truly makes the whole process worth the effort when we can produce seedstock that allows you to be profitable in doing what you enjoy.
Thank You!



Parke Ranch
7 Peppergrass Lane
Drummond, Mt 59832

Parke Ranch
Maternal Power
Bull Sale 2017
Dec. 5th thru 13th
Drummond, Mt

