

2018

# Parke Ranch

## Maternal Power Bull Sale

### Silent Auction Format

Dec. 4th thru 12th, 2018  
Drummond, Montana



484F



**44 Bulls Sell**

**Salers & Optimizers**

**Eaf & Tiffany Parke**

7 Peppergrass Lane  
Drummond, Montana

406-288-3573 or 406-240-4167

parkeranch@gmail.com

www.parkeranch.com

November 2018

Dear Cattlemen,

Our family here at Parke Ranch would like to welcome you to our third silent auction Maternal Power Bull Sale. We greatly appreciate your interest and past support of our program and cattle. The feedback from past buyers has been positive about the cattle and sale procedure. We will continue again this year with the silent auction sale format over several days, which allows you to view the sale bulls and cow herd at your convenience. Everyone's schedule is different and life is busy so hopefully this gives you a little flexibility. It also allows you to make unpressured decisions about the herd sires that can move your breeding program in your desired direction.

2018 has been another unique year with its own challenges and blessings, but I guess that is what keeps life in agriculture interesting! The winter and calving season were definitely more difficult and labor demanding than we have experienced in quite some time. It sure was a blessing to have the Salers benefits of calf vigor and mothering ability to lessen the impact! Spring and early summer here in western Montana brought good moisture and when July came around we ended up with great haying weather. It was a tremendous year for grass volume and hay quantity to restock the depleted supplies. The cattle market has continued to show some improvement with the high demand for beef paving the way for brighter years to come!

Our family has had a great year and for the first time in over a decade has grown in size. On September 1st our oldest son, Joseph married Aubrey Fenton from Preston, Idaho. We are excited to have Aubrey as part of our family! Another new change came in late June when our middle son, Spencer left on a two year mission for the Church of Jesus Christ of Latter Day Saints. We miss him and his help but are glad for the great experiences he is having in Layton, Utah. Our oldest, Melanie, is in Rexburg, Idaho in her junior year of Animal Science at BYU-Idaho. Joseph & Aubrey are also in Rexburg studying Ag Business and Elementary Ed. This means things are a little more quiet around home and has Deana and Scott in the field and corral helping a lot more.

We are excited about the bulls in this years sale offering and feel they will make a positive impact in the profitability of the herds and operations where they end up. We welcome any questions and would encourage you to come and take a look through the bull pen and cow herd anytime! Thanks for your time and consideration of a Parke Ranch Bull! Hope to see or visit with you in December!



Sincerely, Eaf & Tiffany Parke

Melanie, Joseph & Aubrey, Spencer, Deana, and Scott



## **Ranch History, Genetics, and Program**

My Great Grandparents purchased the central part of our ranch in 1952 and moved from Idaho to western Montana. I am the 4th generation to raise cattle here in the Flint Creek Valley. We are a family operation without any outside help on the ranch. From the irrigating & haying to the breeding, calving, and clipping we do it as a family and are grateful for that opportunity. We are excited that our children are extremely interested, involved, and hoping to return to be a part of it in the future!

With our experiences over the past 22 years we have become more convinced of the tremendous benefits of Salers genetics and the advantages of heterosis. The traits found in these Optimizer cattle of longevity, fertility, and mothering ability are among the most profitable in the cattle industry. They also have great performance as we just shipped the bottom 2/3 of our steer calves weighing just over 750 lbs with no creep feed.

We have been focused for decades on developing a maternal cow herd built for success and profitability in a commercial setting. We sort and cull our cow herd very extensively each year for performance, confirmation, udder quality, disposition, and fertility. Any females not meeting our standards are culled, sold for commercial females, or used as receipt cows for a neighbors embryo program. We have not yet found the perfect animal, so we will represent our cattle realistically and be critically honest. Our number one goal is for you to be completely satisfied with your purchase and successful in your operation.

**We Believe In... Will Represent Honestly... and Stand Behind our Cattle!**

### **Sale Procedure:**

\*Bulls will sell in a silent auction format with bidding opening at noon on Dec. 4, 2018.

\*Bulls have a starting base price which is listed in the catalog. (\$2500, \$3000, or \$3500) The 3 price groups have remained the same as the last 2 years.

\*Buyers may place a bid at base price on any bull without a bid or raise the bid by \$100 on any bulls with a bid. Bidding will continue until the sale closes at 2 pm on Dec. 12th

\*Bids may be placed via phone, text, email, or in person anytime during the sale.

\*Any bulls receiving a raising bid on Wednesday Dec. 12th will be involved in an oral bid off between the last bidder before the 12th and any bidders on the 12th before 2 pm. Bid offs will be handled in order of price and as quickly as the contending bidders can be reached following the close of the auction. Bulls without further bids on the 12th will be considered sold to the highest bidder at 2 pm on the 12th. Any bulls without a base bid will be available at base price. (To avoid bid offs we would encourage bidding early in the sale process so if needed you may move to other bull choices)

\*A spreadsheet of sale bulls with current bids will be updated frequently and available to view at [www.parkeranch.com](http://www.parkeranch.com) or you may request updates on your bidding status.

**\* Please call with any questions. Home 406-288-3573 Cell 406-240-4167**

## **Bull History & Development**

\*All bulls were born in the first 26 days of the calving season (2 yr old females started 14 days ahead of mature cows). We took actual birthweights with a scale within 24 hours of birth as well as collected and recorded more than 20 other pieces of data on them and their dams.

\*They were raised on milk and grass without any creep feed.

\*Sale bulls are the top 30% of our 2018 male calves. They have been evaluated and sorted at many stages of life for dam quality, birthweight, disposition, confirmation, performance, and soundness.

\*Bulls were weaned Oct. 5th and are being fed free choice long stem grass hay and 5 lbs of bull challenger pellets per day.

\*Bulls will be fed throughout the winter for a 2.8 lbs/day gain to ensure soundness. We have had positive feedback on the bulls breeding activity and fall body condition.

\*They will be semen tested in March and be vaccinated and ready to go to work.

\* All double black bulls were DNA tested for coat color and those who were found to be homozygous black are designated as such in the catalog (HomBlk).

### **Health**

\* All bulls were vaccinated this fall with Vision 8, Pyramid 5, Foot Rot vaccine, Autogenous Respiratory (twice), and Autogenous Type A.

\*Spring vaccines will be given before delivery.

### **Sale Terms & Details**

\* 1/2 of the purchase price will be due at sale time with the balance due at delivery.

\* Bulls will be fed free of charge and at our risk until delivery beginning in mid March.

\* Free delivery up to 500 miles with any additional mileage at cost.

\* All bulls are fully guaranteed for the first breeding season for disposition, structural soundness, and fertility.

\* We will notify you as soon as possible if any bulls are injured in our care or do not pass the semen test. You can either select a replacement bull if one is available or receive a full refund of your initial payment.

\*We are retaining 1/3 semen interest on all bulls and will collect semen before delivery, at our cost, on any we desire to use AI in our program. You have full salvage value.

**\*We are offering a volume discount of 5% on any purchase of 5 or more bulls.**



## Inspection of Cattle

Bulls are available for your inspection at any time now or during the sale period. If you desire to call ahead we can make accommodations to improve your viewing of the bulls and cow herd if you would like.

## Directions to the Ranch

Exit Interstate 90 at Drummond. Head south on Highway #1 towards Philipsburg, MT. After 2.6 miles turn left (East) on Mullan Road and then travel 1.5 miles and our ranch will be on your left.

## Additional Information

\* We will have current weights as well as scrotal measurements on all of the bulls at the beginning of the sale period. We can email or fax these to you or they will be available when you come to view the sale offering.

\* A video of each bull in the sale offering will be posted to our website for your viewing by late November. [www.parkeranch.com](http://www.parkeranch.com)

## Contact Us

Home: 406-288-3573 Eaf 's Cell: 406-240-4167 Tiffany's Cell: 406-396-0106

Email: [parkeranch@gmail.com](mailto:parkeranch@gmail.com)

Web page: [www.parkeranch.com](http://www.parkeranch.com)



**2018  
4-H Fair Scenes**

**Salers Females  
Shine!**

**Congratulations**

**Sadler McCollum**

**Deana & Scott  
Parke**

# Reference Sires

## PRK Captain 098C

Hom. Black Hom. Polled 48% Salers Born 3/1/15 Reg. #702312 Tattoo:PRK098C

Tombstone 050 (AN)

**SRS Ariat 270A**

SRS Footloose 9927J

SRS Uprising 0059U

**PRK Virginia 098X**

PRK Virginia 898U



CED	BW	WW	YW	MWW	Milk	Scrotal	Fat	REA	Marbling
+0.2	+2.0	+50	+91	+42	+17	+0.3	+0.01	-0.08	+1.1

## SRS Benchmark 8105B

Black Homozygous Polled 50% Salers Born 2/18/14 Reg. #696683 Tattoo:SRS8105B

Sitz Uncommon (AN)

**SRS Zeus 0509Z**

PRK Miss Montana 503R\*

SRS Saint 0218S

**SRS Shannon 8105U\***

SRS Shannon 0660S



CED	BW	WW	YW	MWW	Milk	Scrotal	Fat	REA	Marbling
+1.1	+0.2	+59	+102	+51	+21	+0.8	-0.01	-0.01	+1.1

## MJB Elway 322C

Homozygous Black Polled 56% Salers Born 2/13/15 Reg. #704219 Tattoo:MJB322C

MAC F1 Sundance 4S

**MAC Quarterback 58Y**

WJM Wilma 120W

TSB Tulsa 82W

**MJB Yellow Rose 156Z**

MIS 92F Masterpiece 57H



CED	BW	WW	YW	MWW	Milk	Scrotal	Fat	REA	Marbling
+0.7	+0.5	+50	+95	+44	+20	+0.0	+0.02	-0.05	+1.7



# Reference Sires

## DJF Border Line 815A

Red Homozygous Polled 50% Salers Born 2/06/14 Reg. #694425 Tattoo:DJF815A

TR Colt 45 UT804  
C-Bar Evolution 107Y (AR)  
LGS Abby 689S

S Nebraska 330N  
STCY Unity 815U\*  
STCY Natalie 315N



CED	BW	WW	YW	MWW	Milk	Scrotal	Fat	REA	Marbling
+1.2	+0.6	+61	+128	+50	+20	+0.4	+0.02	+0.01	+1.0

## DJF Daybreak 264D

Hom. Black Hom. Polled PB Salers Born 2/11/16 Reg. #712760 Tattoo:DJF264D

Legend's Mojo 321N  
DJF Zodiac 941Z  
DJF Whirl 941W

SRS Wyatt Earp 965W  
DJF Zoey 264Z  
DJF Sahara 64S



CED	BW	WW	YW	MWW	Milk	Scrotal	Fat	REA	Marbling
+1.1	+0.2	+49	+84	+44	+20	+0.4	0.00	-0.09	+0.2

## PRK Duracell 252D

Black Homozygous Polled 50% Salers Born 3/4/16 Reg. #709879 Tattoo:PRK252D

C-Bar Evolution 107Y (AR)  
DJF Border Line 815A  
STCY Unity 815U\*

SRS WDA 270W  
PRK Robbie 252Z  
PRK Robbie 852U



CED	BW	WW	YW	MWW	Milk	Scrotal	Fat	REA	Marbling
+1.4	0.0	+50	+106	+40	+15	+0.2	+0.02	+0.01	+1.1

## 273F PRK Foreman 273F \$3500

Blk Pld 48.2% Salers #724575

SRS Ariat 270A	<b>Born</b> 2/23/18
<b>PRK Captain 098C</b>	<b>BW</b> 87 lbs
PRK Virginia 098X	<b>205 Wt</b> 688 lbs
SRS United 0653U	<b>Index</b> 101
<b>PRK Pigeon 273Z</b>	<b>11/10 Wt</b> 914
PRK Pigeon 873U	<b>WDA</b> 3.52 lbs
	<b>Frame</b> 6.3

BW +0.1 WW 43 YW 83 MWW 39 Milk 18

**Dam's Prod:** BW 5@76lbs WW 5@94

- \* Quad polled
- \* Here is a deep ribbed, thick, and very balanced bull with a quiet disposition.
- \* His dam is attractively made with a lot of thickness and depth and a solid udder.
- \* Captain is a bull we raised that was purchased by Skinners and we have used him AI the past 3 years.

## 372F PRK Fort Worth 372F \$3000

HomBlk Pld 48.4% Salers #724604

SRS Ariat 270A	<b>Born</b> 2/28/18
<b>PRK Captain 098C</b>	<b>BW</b> 85 lbs
PRK Virginia 098X	<b>205 Wt</b> 658 lbs
SRS United 0653U	<b>Index</b> 96
<b>PRK Susannah 372A</b>	<b>11/10 Wt</b> 910
PRK Susannah 172Y	<b>WDA</b> 3.57 lbs
	<b>Frame</b> 5.5

BW -0.8 WW 42 YW 79 MWW 39 Milk +18

**Dam's Prod:** BW 4@80 lbs WW 3@96

- \* Quad Polled
- \* **Potential Heifer Bull**
- \* A deep ribbed, moderate birthweight bull who is gaining well early.
- \* A full sister is a top bred heifer in our herd.
- \* His dam is a good milking United daughter and has a maternal brother selling in the sale as 172F.



PRK Foreman 273F & Dam Sept. 2018

## 587F PRK Forester 587F \$3500

Blk Pld 49.3% Salers #724598

SRS Ariat 270A	<b>Born</b> 2/27/18
<b>PRK Captain 098C</b>	<b>BW</b> 90 lbs
PRK Virginia 098X	<b>205 Wt</b> 728 lbs
SRS Zeus 0509Z	<b>Index</b> 106
<b>PRK Gina 587C</b>	<b>11/10 Wt</b> 954
PRK Gina 287Z	<b>WDA</b> 3.73 lbs
	<b>Frame</b> 6.4

BW +0.8 WW 55 YW 99 MWW 43 Milk 16

**Dam's Prod:** BW 2@89lbs WW 2@101

- \* Quad polled
- \* A very rugged and powerful bull who has lots of performance and is gaining well.
- \* His dam is a smaller framed deep bodied female who has a great udder. She weaned this calf at 64% of her weight.
- \* A top cow family in our herd. Her maternal brother was a top seller in 2017 sale.



PRK Forester 587F & dam Sept. 2018



**087F PRK Fireman 087F \$3500**

HomBlk Pld 50.2% Salers #724593

SRS Ariat 270A	<b>Born</b> 2/26/18
<b>PRK Captain 098C</b>	<b>BW</b> 88 lbs
PRK Virginia 098X	<b>205 Wt</b> 703 lbs
	<b>Index</b> 103
SRS Uprising 0059U	<b>11/10 Wt</b> 934
<b>PRK Gina 087X</b>	<b>WDA</b> 3.63 lbs
PRK Gina 857U	<b>Frame</b> 6.5

BW +0.7 WW 51 YW 97 MWW 43 Milk 18

**Dam's Prod:** BW 7@ 83 lbs WW 7@ 102

\* Quad Polled

\* Fireman is a very long bodied bull that is correct and stylish in his make-up and is going to be a top performer.

\* His dam is a proven female with good milk. She has produced 2 other bulls who have been top sellers and high gainers.

\* 2 of our top cow families behind this quality bull. His dam is also the great grand-dam of the 587F bull.

**187F PRK Flagship 187F \$3500**

HomBlk P/S 49.3% Salers #724615

SRS Ariat 270A	<b>Born</b> 3/1/18
<b>PRK Captain 098C</b>	<b>BW</b> 84 lbs
PRK Virginia 098X	<b>205 Wt</b> 695 lbs
	<b>Index</b> 101
SRS United 0653U	<b>11/10 Wt</b> 910
<b>PRK Julie 187Y</b>	<b>WDA</b> 3.58 lbs
PRK Julie 787T	<b>Frame</b> 6.2

BW -0.6 WW 44 YW 84 MWW 41 Milk +19

**Dam's Prod:** BW 6@80 lbs WW 5@99

\* Quad Polled

\* **Potential Heifer Bull**

\* Flagship has great length and is very cleanly made with a thick top.

\* His dam is an easy going female who has a very good udder and very feminine.

\* This is her third bull to make the sale with last years calf being one of the top sellers.



PRK 087C Maternal brother to 087F



PRK Flagship 187F Sept. 2018

**686F PRK Factor 686F \$3500**

Blk Pld 49.8% Salers #724536

SRS Ariat 270A	<b>Born</b> 2/8/18
<b>SRS Cinch 0778C</b>	<b>BW</b> 66 lbs
SRS Pony Tail 0778T	<b>205 Wt</b> 740 lbs
	<b>Index</b> 108
SRS Zeus 0509Z	<b>11/10 Wt</b> 950
<b>PRK Lady 686D</b>	<b>WDA</b> 3.45 lbs
PRK Lady 886U	<b>Frame</b> 6.1

BW -3.1 WW 48 YW 89 MWW 44 Milk 20

**Dam's Prod:** BW 1@66 lbs WW 1@108

\* Quad Polled

\* **Potential Heifer Bull**

\* You won't find a bull with any more birth to weaning spread than Factor. Lot's of calving ease bred in this bull.

\* His young dam has a tremendous udder and good milk. She weaned this calf Oct. 5th at 69% of her body weight.



PRK Factor 686F &amp; Dam Sept. 2018

**098F PRK Force 098F \$3000**

Red Pld 48% Salers #724576

SRS Ariat 270A	<b>Born</b> 2/23/18
<b>SRS Cinch 0778C</b>	<b>BW</b> 83 lbs
SRS Pony Tail 0778T	<b>205 Wt</b> 710 lbs
	<b>Index</b> 104
SRS Uprising 0059U	<b>11/10 Wt</b> 942
<b>PRK Virginia 098X</b>	<b>WDA</b> 3.62 lbs
PRK Virginia 898U	<b>Frame</b> 5.8

BW -1.0 WW 49 YW 95 MWW 43 Milk 18

**Dam's Prod:** BW 7@89 lbs WW 7@101

\* Quad Polled

\* Force is very thick ended and full of red meat. He has a moderate frame and birth weight without giving up performance.

\* His dam is an extremely deep bodied and thick female that milks very heavy.

\* She is the mother of PRK Captain 098C and had a very good bull in last years sale as well.

**455F PRK Fiesta 455F \$3000**

Blk Pld 49.5% Salers #724671

SRS Ariat 270A	<b>Born</b> 3/15/18
<b>SRS Cinch 0778C</b>	<b>BW</b> 81 lbs
SRS Pony Tail 0778T	<b>205 Wt</b> 667 lbs
	<b>Index</b> 97
SRS Yahtzee 996Y	<b>11/10 Wt</b> 828
<b>PRK Flicka 455B</b>	<b>WDA</b> 3.45 lbs
PRK Flicka 849U	<b>Frame</b> 6.0

BW -1.1 WW 40 YW 83 MWW 39 Milk 19

**Dam's Prod:** BW 3@81 lbs WW 3@95

\* Quad Polled

\* **Potential Heifer Bull**

\* Fiesta is a light birthweight bull who is very stylish and attractive.

\* Cinch is siring consistently light birth weight calves who have good performance.



SRS Cinch 0778C Reference Sire





**PRK Delta 440D Full Brother to 440F**

**062F PRK Freight Train 062F \$3500**

HomBlk Pld 50% Salers #724601

SRS Zeus 0509Z	<b>Born</b> 2/27/18
<b>SRS Benchmark 8105B</b>	<b>BW</b> 98 lbs
SRS Shannon8105U*	<b>205 Wt</b> 731 lbs
	<b>Index</b> 107
SRS Sequel 0122S	<b>11/10 Wt</b> 962
<b>PRK Malibu 062X</b>	<b>WDA</b> 3.76 lbs
PRK Malibu 252M	<b>Frame</b> 6.2

BW +2.2 WW 55 YW 104 MWW 51 Milk 24

**Dam's Prod:** BW 7@86 lbs WW 6@103

- \* Quad Polled
- \* Freight Train is extremely long bodied with good thickness. He will add pounds to your calf crop.
- \* He is third for WDA and fifth highest weight on Nov.10th.
- \* His dam is a very thick and deep bodied female who has a very good udder. A very balanced and attractively made cow who is proven with each calf above average in the herd at weaning.



**PRK Express 999E Mat Brother of 999F**

**440F PRK Forager 440F \$3000**

Blk P/S 50% Salers #724573

SRS Zeus 0509Z	<b>Born</b> 2/23/18
<b>SRS Benchmark 8105B</b>	<b>BW</b> 88 lbs
SRS Shannon8105U*	<b>205 Wt</b> 677 lbs
	<b>Index</b> 99
SRS United 0653U	<b>11/10 Wt</b> 854
<b>PRK Ruth 440B</b>	<b>WDA</b> 3.28 lbs
PRK Ruth 250Z	<b>Frame</b> 5.4

BW -0.5 WW 45 YW 90 MWW 43 Milk 21

**Dam's Prod:** BW 3@85 lbs WW 3@101

- \* Triple Polled
- \* A very square made and thick smaller framed bull.
- \* A full brother sold in our 2016 sale.
- \* His dam is an extremely good uddered female whose 3 calves have all been top end calves.

**999F PRK Freightliner 999F \$3000**

Blk Pld 50.6% Salers #724609

SRS Zeus 0509Z	<b>Born</b> 3/1/18
<b>SRS Benchmark 8105B</b>	<b>BW</b> 88 lbs
SRS Shannon8105U*	<b>205 Wt</b> 723 lbs
	<b>Index</b> 106
SRS Marksman 0059M	<b>11/10 Wt</b> 910
<b>PRK Kit 999W</b>	<b>WDA</b> 3.58 lbs
PRK Kit 245M	<b>Frame</b> 6.5

BW +0.5 WW 54 YW 95 MWW 49 Milk 22

**Dam's Prod:** BW 8@83 lbs WW 8@103

- \* Quad Polled
- \* This bull is another extremely long Benchmark son who will sire some high performing calves.
- \* His dam is as consistent as any cow in the herd. All 8 calves have been keepers.
- \* Her bull last year was very popular and our 3rd highest seller.

**484F PRK Fortress 484F \$3500**

HomBlk Pld 49.8% Salers #724625

SRS Zeus 0509Z	<b>Born</b> 3/3/18
<b>SRS Benchmark 8105B</b>	<b>BW</b> 93 lbs
SRS Shanon8105U*	<b>205 Wt</b> 770 lbs
	<b>Index</b> 112
SRS Zip Code 0174Z	<b>11/10 Wt</b> 926
<b>PRK Ginger 484B</b>	<b>WDA</b> 3.67 lbs
PRK Ginger 242M	<b>Frame</b> 6.5

BW +0.7 WW 61 YW 106 MWW 53 Milk 23

**Dam's Prod:** BW 3@84 lbs WW 3@109

- \* Quad Polled
- \* Here is a bull with length and performance. Highest 205 weight in the sale.
- \* Full brother and sister were top of their calf crops.
- \* His dam is a small well made female that milks great. Take a look at her average birth weights and weaning index.
- \* Fortress weaned at over 65% of his dams body weight.

**993F PRK Fame 993F \$3500**

HomBlk Pld 49.8% Salers #724628

SRS Zeus 0509Z	<b>Born</b> 3/4/18
<b>SRS Benchmark 8105B</b>	<b>BW</b> 94 lbs
SRS Shannon8105U*	<b>205 Wt</b> 740 lbs
	<b>Index</b> 108
SRS Sequel 0122S	<b>11/10 Wt</b> 984
<b>PRK Honor 993W</b>	<b>WDA</b> 3.92 lbs
PRK Honor 345N	<b>Frame</b> 6.6

BW +1.4 WW 57 YW 103 MWW 50 Milk 22

**Dam's Prod:** BW 8@87 lbs WW 8@103

- \* Triple Polled
- \* A powerful and balanced bull that combines length and thickness. He is the highest WDA and second heaviest bull in sale.
- \* Maternal brother was kept as our herd sire, PRK Bonsai 993B.
- \* His dam is a long made female that milks well and has raised 3 bulls and 5 replacement females.



**PRK Fortress 484F and dam Sept. 2018**



**Dam & Full Brother to 484F Sept. 2016**



**PRK Bonsai 993B Mat. Brother of 993F**



**PRK 263F & PRK 280F Sept. 2018**



**574F PRK Fresno 574F \$3500**

Red Pld 49.2% Salers #724550

C-Bar Evolution 107Y	<b>Born</b> 2/17/18
<b>DJF Border Line 815A</b>	<b>BW</b> 91 lbs
STCY Unity 815U	<b>205 Wt</b> 742 lbs
SRS Yakima 9118Y	<b>Index</b> 108
<b>PRK Jasmine 574C</b>	<b>11/10 Wt</b> 966
PRK Jasmine 194Y	<b>WDA</b> 3.63 lbs
	<b>Frame</b> 6.5

**Scott & PRK Fresno 574F Aug. 2018**

BW +0.6 WW 59 YW 115 MWW 46 Milk 17

**Dam's Prod:** BW 2@82 lbs WW 2@104

\* Quad Polled

\* A bull with good thickness that has lots of length and is clean made. Lots of power and performance in Fresno.

\* Scott showed this bull and his dam at our Tri-county Fair and Fresno was named Champion male beef.

\* His dam is an attractive, very feminine, balanced young female.

**360F PRK Firebird 360F \$3000**

Red Pld 49.2% Salers #724584

C-Bar Evolution 107Y	<b>Born</b> 2/25/18
<b>DJF Border Line 815A</b>	<b>BW</b> 90 lbs
STCY Unity 815U	<b>205 Wt</b> 658 lbs
SRS United 0653U	<b>Index</b> 96
<b>PRK Flicka 360A</b>	<b>11/10 Wt</b> 870
PRK Flicka 160Y*	<b>WDA</b> 3.37 lbs
	<b>Frame</b> 5.9

BW +0.5 WW 48 YW 102 MWW 44 Milk 20

**Dam's Prod:** BW 4@91 lbs WW 4@103

\* Quad Polled

\* A moderate Border Line with lots of capacity and volume.

\* His full brother, PRK Diablo, was a top bull in our 2016 sale who we have used AI in our program.

\* His dam is a very long, attractive, and balanced United daughter.

**384F PRK Fenway 384F \$3500**

Red Pld 49.8% Salers #724583

C-Bar Evolution 107Y	<b>Born</b> 2/25/18
<b>DJF Border Line 815A</b>	<b>BW</b> 91 lbs
STCY Unity 815U	<b>205 Wt</b> 720 lbs
SRS WDA 270W	<b>Index</b> 105
<b>PRK Lass 384A</b>	<b>11/10 Wt</b> 926
PRK Lass 184Y	<b>WDA</b> 3.59 lbs
	<b>Frame</b> 6.0

BW +0.6 WW 58 YW 117 MWW 47 Milk 18

**Dam's Prod:** BW 4@90 lbs WW 4@105

\* Quad Polled

\* An extremely long bodied and thick topped bull.

\* His full brother was a very popular bull in last years sale who performed well.

\* Fenway's dam is one of our favorites! She is moderate, easy fleshing, thick, good milking and perfect uddered. Her only daughter was shown by our son Spencer as a bred heifer.

**PRK Fenway 384F & Dam Sept. 2018****843F PRK Firestone 843F \$3500**

Red Pld 50% Salers #724600

C-Bar Evolution 107Y	<b>Born</b> 2/27/18
<b>DJF Border Line 815A</b>	<b>BW</b> 98 lbs
STCY Unity 815U	<b>205 Wt</b> 721 lbs
PRK Remington312R	<b>Index</b> 105
<b>PRK Cathleen 843U</b>	<b>11/10 Wt</b> 962
PRK Cathleen 394N	<b>WDA</b> 3.76 lbs
	<b>Frame</b> 6.4

**PRK Firestone 843F Sept. 2018**

BW +1.6 WW 56 YW 111 MWW 49 Milk 21

**Dam's Prod:** BW 9@87 lbs WW 9@103

\* Quad Polled

\* Firestone is a power house of a bull that will add lots of pounds to his calf crop. 3rd highest WDA bull in the sale.

\* A very powerful female that is long, thick, and very deep bodied. She milks heavy and all 9 of her calves made the bull pen or replacement heifer group.

\* She is the grandmother of the 163F bull.

**365F PRK Frontline 365F \$3000**

Blk P/S 50.1% Salers #724621

C-Bar Evolution 107Y	<b>Born</b> 3/2/18
<b>DJF Border Line 815A</b>	<b>BW</b> 92 lbs
STCY Unity 815U	<b>205 Wt</b> 684 lbs
SRS United 0653U	<b>Index</b> 100
<b>PRK Replica 365A</b>	<b>11/10 Wt</b> 880
PRK Replica 095X	<b>WDA</b> 3.48 lbs
	<b>Frame</b> 6.0

BW +0.6 WW 49 YW 102 MWW 44 Milk 20

**Dam's Prod:** BW 4@84 lbs WW 4@99

\* Triple Polled

\* A black Border Line with lots of depth of rib and good thickness.

\* His dam has 2 females in the herd and this is her second bull.

\* The Border Line cattle carry a lot of length and thickness and perform very well.

**375F PRK Fireball 375F \$3000**

Red Pld 50.1% Salers #724613

C-Bar Evolution 107Y	<b>Born</b> 3/1/18
<b>DJF Border Line 815A</b>	<b>BW</b> 79 lbs
STCY Unity 815U	<b>205 Wt</b> 650 lbs
SRS United 0653U	<b>Index</b> 95
<b>PRK Kit 375A</b>	<b>11/10 Wt</b> 872
PRK Kit 195Y	<b>WDA</b> 3.43 lbs
	<b>Frame</b> 5.5

BW -1.9 WW 41 YW 89 MWW 41 Milk 20

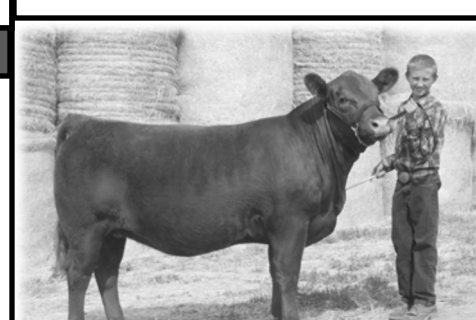
**Dam's Prod:** BW 4@84 lbs WW 4@101

\* Quad Polled

\* Potential Heifer Bull

\* A moderate framed, very attractive and square made bull. He is gaining well early on.

\* His dam is a heavy milking United daughter. The United's make very productive females. All 4 of her calves have been keepers.

**PRK Hannah 729E Border Line daughter**



**561F PRK Freight 561F \$3500**

Blk Pld 52.7% Salers #724562

DJF Border Line 815A

**Born** 2/21/18**PRK Diablo 360D****BW** 97 lbs

PRK Flicka 360A

**205 Wt** 752 lbs**Index** 110

SRS American 0472A

**11/10 Wt** 986**PRK Rhonda 561C****WDA** 3.76 lbs

PRK Rhonda 541R\*

**Frame** 6.3**PRK Freight 561F Sept. 2018****BW +1.1 WW 56 YW 111 MWW 50 Milk 22****Dam's Prod:** BW 2@85 lbs WW 2@106

\* Quad Polled

\* Freight is massive and probably the deepest bodied bull in the offering with great thickness. He is the heaviest bull on Nov. 10th and 3rd highest WDA bull.

\* His dam is a very attractively made female with great balance and a great udder structure. She weaned Freight at 63% of her body weight.

**594F PRK Ferrari 594F \$3000**

Blk Pld 50.9% Salers #724596

DJF Border Line 815A

**Born** 2/27/18**PRK Diablo 360D****BW** 92 lbs

PRK Flicka 360A

**205 Wt** 684 lbs**Index** 100

SRS American 0472A

**11/10 Wt** 846**PRK Holly 594C****WDA** 3.30 lbs

PRK Holly 794T

**Frame** 5.9**BW +1.4 WW 56 YW 111 MWW 45 Milk 17****Dam's Prod:** BW 4@89lbs WW 4@98

\* Quad Polled

\* A bull with a tremendous amount of thickness of top and quarter. He will put some shape of hip into your calves.

\* His dam is a long and deep bodied female and comes from a cow family with lots of volume and capacity.

**PRK Diablo 360D as a calf Nov. 2016****BW +0.5 WW 47 YW 99 MWW 46 Milk 23****Dam's Prod:** BW 2@88 lbs WW 2@103

\* Quad Polled

\* Ferrari is very clean, correct, and stylish in his type.

\* His dam is a thick made female with a great udder. Her bull in last years sale was the high seller.

\* Diablo was our pick of our red Border Line sons to go forward with in our program.

**537F PRK Fiat 537F \$2500**

Blk Pld 56.3% Salers #724645

DJF Border Line 815A

**Born** 3/8/18**PRK Duracell 252D****BW** 78 lbs

PRK Robbie 252Z

**205 Wt** 647 lbs**Index** 95

SRS Ariat 270A

**11/10 Wt** 758**PRK Shannon 537C****WDA** 3.07 lbs

PRK Shannon 325A

**Frame** 5.6**PRK Format 480F Sept. 2018****BW -0.5 WW 45 YW 94 MWW 38 Milk 16****Dam's Prod:** BW 2@86 lbs WW 2@96

\* Quad Polled

\* **Potential Heifer Bull**

\* A light birth weight bull with style and attractiveness.

\* His dam is a long bodied and deep ribbed young female with a very good udder.

**556F PRK Flash 556F \$3000**

HomBlk Pld 53.6% Salers #724656

DJF Border Line 815A

**Born** 3/11/18**PRK Duracell 252D****BW** 86 lbs

PRK Robbie 252Z

**205 Wt** 687 lbs**Index** 100

PRK Ace 081A

**11/10 Wt** 822**PRK Topaz 556C****WDA** 3.37 lbs

PRK Topaz 336A

**Frame** 6.2**480F PRK Format 480F \$3500**

HomBlk Pld 49.7% Salers #724652

DJF Border Line 815A

**Born** 3/10/18**PRK Duracell 252D****BW** 83 lbs

PRK Robbie 252Z

**205 Wt** 725 lbs**Index** 106

SRS Spartacus 0670Z

**11/10 Wt** 900**PRK Rosebud 480B****WDA** 3.67 lbs

PRK Rosebud 280Z

**Frame** 6.6**BW -0.9 WW 51 YW 101 MWW 43 Milk 18****Dam's Prod:** BW 3@85 lbs WW 3@99

\* Quad Polled

\* **Potential Heifer Bull**

\* A bull that will work on heifers and still add pounds to your calf crop. A very clean and stylish made bull with tremendous numbers.

\* Dam is a very long bodied and feminine female with great milk. She weaned Format at 61% of her body weight.

**BW -0.6 WW 48 YW 98 MWW 40 Milk 15****Dam's Prod:** BW 2@82 lbs WW 2@97

\* Quad Polled

\* A thick topped moderate birth weight bull.

\* Flash's dam is an attractive made young female with great balance and eye appeal. Scott showed her as a bred heifer at the fair in 2016.

\* Duracell was a bull we retained to use in our program as a heifer bull. His calves are light at birth but have grown out well with an attractive pattern. His dam is a gorgeous female.

**PRK Topaz 556C dam of PRK Flash 556F**





PRK Durango 170D March 2017

**263F PRK Frequency 263F \$3000**

Red Pld 48.8% Salers #724578

SRS Bullseye 592B	<b>Born</b> 2/24/18
<b>PRK Durango 170D</b>	<b>BW</b> 98 lbs
PRK Rosebud 170Y	<b>205 Wt</b> 680 lbs
	<b>Index</b> 99
SRS Xtra 0347X	<b>11/10 Wt</b> 894
<b>PRK Pigeon 263Z</b>	<b>WDA</b> 3.45 lbs
PRK Pigeon 073X	<b>Frame</b> 5.6

BW +0.3 WW 40 YW 83 MWW 40 Milk 20

**Dam's Prod:** BW 5@93 lbs WW 5@102

\* Triple Polled

\* Frequency is a very balanced bull with lots of thickness across his top and down his quarter.

\* His dam is a high volume and very long spined female. An easy keeper who also milks very heavy.

\* Durango was a light BW bull who sold in our 2016 sale to Silver Spur Salers. We have used him AI in our own program.



PRK Frequency 263F Sept. 2018

<b>665F</b>	<b>PRK Fuji 665F</b>	<b>\$3000</b>
Blk Pld	50% Salers	#724545
SRS Bullseye 592B	<b>Born</b> 2/15/18	
<b>PRK Durango 170D</b>	<b>BW</b> 89 lbs	
PRK Rosebud 170Y	<b>205 Wt</b> 701 lbs	
	<b>Index</b> 102	
SRS Spartacus 0670Z	<b>11/10 Wt</b> 848	
<b>PRK Honor 665D</b>	<b>WDA</b> 3.16 lbs	
PRK Honor 265Z	<b>Frame</b> 5.6	

BW +0.4 WW 44 YW 88 MWW 41 Milk 19

**Dam's Prod:** BW 1@89 lbs WW 1@102

\* Triple Polled

\* A smaller framed, very thick bull.

\* Dam is a beautiful, heavy milking, & good uddered female. She Weaned Fuji at 64% of her body weight.

**3137F PRK Ferdinand 3137F \$2500**

Blk Pld 50% Salers #724585

SRS Bullseye 592B	<b>Born</b> 2/25/18
<b>PRK Durango 170D</b>	<b>BW</b> 88 lbs
PRK Rosebud 170Y	<b>205 Wt</b> 662 lbs
	<b>Index</b> 97
PRK Yellowstone 966Y	<b>11/10 Wt</b> 866
<b>SRS Lucy 3137A</b>	<b>WDA</b> 3.36 lbs
SRS Lucy 0935W	<b>Frame</b> 5.7

BW -0.6 WW 38 YW 82 MWW 37 Milk 18

**Dam's Prod:** BW 4@90 lbs WW 4@98

\* Triple Polled

\* A moderate birthweight bull that is thick and deep in a smaller frame.

\* His dam is ideal in her type—deep, thick, easy fleshing, and great uddered.



3137A

<b>664F</b>	<b>PRK Fax 664F</b>	<b>\$3000</b>
Blk Pld	52.8% Salers	#724538
MAC Quarterback 58Y	<b>Born</b> 2/9/18	
<b>MJB Elway 322C</b>	<b>BW</b> 95 lbs	
MJB Yellow Rose 156Z	<b>205 Wt</b> 719 lbs	
	<b>Index</b> 105	
SRS United 0653U	<b>11/10 Wt</b> 912	
<b>PRK Jewel 664D</b>	<b>WDA</b> 3.33 lbs	
PRK Jewel 486B	<b>Frame</b> 5.9	

BW +1.3 WW 53 YW 101 MWW 46 Milk 20

**Dam's Prod:** BW 1@95 lbs WW 1@105

\* Quad Polled

\* Fax has a lot of thickness of top and quarter. He will add some power to your calf crop.

\* His dam is a long, good milking and great dispositioned 2 yr. old. She weaned him at 62% of her body weight.

**163F PRK Firm 163F \$3000**

HomBlk Pld 53.2% Salers #724592

MAC Quarterback 58Y	<b>Born</b> 2/26/18
<b>MJB Elway 322C</b>	<b>BW</b> 91 lbs
MJB Yellow Rose 156Z	<b>205 Wt</b> 706 lbs
	<b>Index</b> 103
SRS Unreal 0151U	<b>11/10 Wt</b> 930
<b>PRK Cathleen 163Y</b>	<b>WDA</b> 3.62 lbs
PRK Cathleen 843U	<b>Frame</b> 5.6

BW +0.9 WW 53 YW 97 MWW 45 Milk 19

**Dam's Prod:** BW 6@92 lbs WW 6@102

\* Quad Polled

\* Firm is a smaller framed bull that still has good performance and great thickness.

\* His dam is a longer, very deep bodied female. She is a maternal sister to the 843F bull in the sale.

<b>659F</b>	<b>PRK Frosty 659F</b>	<b>\$3000</b>
HomBlk Pld	52.8% Salers	#724540
MAC Quarterback 58Y	<b>Born</b> 2/11/18	
<b>MJB Elway 322C</b>	<b>BW</b> 81 lbs	
MJB Yellow Rose 156Z	<b>205 Wt</b> 676 lbs	
	<b>Index</b> 99	
SRS Ariat 270A	<b>11/10 Wt</b> 824	
<b>PRK Wendy 659D</b>	<b>WDA</b> 3.03 lbs	
PRK Wendy 269Z	<b>Frame</b> 5.0	

BW -0.9 WW 44 YW 88 MWW 42 Milk 20

**Dam's Prod:** BW 1@81 lbs WW 1@99

\* Quad Polled

\* Potential Heifer Bull

\* A small framed and thick made heifer bull.

\* Dam is a terrific looking young female with good milk and udder structure.

**280F PRK Fullback 280F \$3500**

HomBlk Pld 52.3% Salers #724622

Mac Quarterback 58Y	<b>Born</b> 3/2/18
<b>MJB Elway 322C</b>	<b>BW</b> 90 lbs
MJB Yellow Rose 156Z	<b>205 Wt</b> 755 lbs
	<b>Index</b> 110
SRS Xpert 0881X	<b>11/10 Wt</b> 972
<b>PRK Rosebud 280Z</b>	<b>WDA</b> 3.84 lbs
PRK Rosebud 070X	<b>Frame</b> 6.1

BW +0.3 WW 54 YW 102 MWW 50 Milk 23

**Dam's Prod:** BW 5@78 lbs WW 5@102

\* Quad Polled

\* The 3rd heaviest and 2nd highest WDA bull in the sale. He has tremendous thickness of quarter and top.

\* His dam is a very long, feminine and heavy milking, great uddered female. She is the grand dam of the 480F bull.





PRK Holly 854F SRS Dundee daughter

**059F PRK Faculty 059F \$2500**

HomBlk Pld 50% Salers #724679

Connealy Greeley	<b>Born</b> 3/22/18
<b>SRS Dundee 270D</b>	<b>BW</b> 74 lbs
SRS Finicky 0838U*	<b>205 Wt</b> 681 lbs
SRS Tahoe 0512T	<b>Index</b> 99
<b>PRK Wendy 059X</b>	<b>11/10 Wt</b> 820
LBR Daytonas Focus	<b>WDA</b> 3.52 lbs
	<b>Frame</b> 6.1

BW -2.4 WW 40 YW 78 MWW 41 Milk 21

**Dam's Prod:** BW 7@76 lbs WW 7@98

\* Quad Polled

\* **Potential Heifer Bull**

\* A very light birth weight bull from a calving ease cow that still has some performance.

\* Dam is an easy fleshing, deep bodied, heavy milking female.



PRK Fullback 280F Sept. 2018

**392F PRK Formula 392F \$2500**

HomBlk Pld 49% Salers #724666

Connealy Greeley	<b>Born</b> 3/13/18
<b>SRS Dundee 270D</b>	<b>BW</b> 91 lbs
SRS Finicky 0838U*	<b>205 Wt</b> 712 lbs
SRS Yakima 9118Y	<b>Index</b> 104
<b>PRK Unity 392A</b>	<b>11/10 Wt</b> 838
PRK Unity 092X	<b>WDA</b> 3.46 lbs
	<b>Frame</b> 6.2

BW +1.0 WW 47 YW 95 MWW 43 Milk 19

**Dam's Prod:** BW 4@84 lbs WW 4@102

\* Triple Polled

\* A younger bull with good performance.

\* We selected Dundee in Skinners 2017 sale for an outcross pedigree in our program. He comes from a tremendous dam and is producing some powerful calves.

**252F PRK Feature 252F \$2500**

Blk Pld 50% Salers #724686

Connealy Greeley	<b>Born</b> 3/26/18
<b>SRS Dundee 270D</b>	<b>BW</b> 94 lbs
SRS Finicky 0838U*	<b>205 Wt</b> 742 lbs
SRS WDA 270W	<b>Index</b> 108
<b>PRK Robbie 252Z</b>	<b>11/10 Wt</b> 856
PRK Robbie 562R	<b>WDA</b> 3.74 lbs
	<b>Frame</b> 5.9

BW +1.4 WW 54 YW 101 MWW 43 Milk 16

**Dam's Prod:** BW 5@79 lbs WW 4@99

\* Quad Polled

\* Feature was a standout at birth. He is one of the highest WDA bulls in the sale.

\* His dam has an ideal phenotype. She is very thick, deep, moderate, and a great uddered female.

\* She is the dam of our herd sire PRK Duracell 252D.



PRK Formal 169F Oct 5, 2018

**616F PRK Frisco 616F \$3000**

Blk Pld 62.5% Salers #724557

SRS Saint 0218S	<b>Born</b> 2/19/18
<b>SRS United 0653U</b>	<b>BW</b> 89 lbs
SRS Starr 0653S*	<b>205 Wt</b> 724 lbs
DJF Border Line 815A	<b>Index</b> 106
<b>PRK Crimson 616D</b>	<b>11/10 Wt</b> 896
PRK Crimson 514R	<b>WDA</b> 3.39 lbs
	<b>Frame</b> 6.0

BW +1.2 WW 52 YW 103 MWW 45 Milk 19

**Dam's Prod:** BW 1@89 lbs WW 1@106

\* Triple Polled

\* Here is a bull you will find in the pen as he is the most friendly.

\* His 2 year old dam is a long well made deep bodied female that weaned Frisco at 60% of body weight.

\* United has had a big impact on our cow herd. Several of the bulls in this sale have been produced by United daughters.



SRS Catalyst 0435C as a yearling

**169F PRK Formal 169F \$3000**

Blk Pld 48.4% Salers #724616

SRS Banner 0749B	<b>Born</b> 3/1/18
<b>SRS Dominant 256D</b>	<b>BW</b> 83 lbs
SRS Juliet 0829U*	<b>205 Wt</b> 668 lbs
PRK Tonka 298T	<b>Index</b> 98
<b>PRK Rebecca 169Y</b>	<b>11/10 Wt</b> 872
PRK Rebecca 569R	<b>WDA</b> 3.43 lbs
	<b>Frame</b> 6.1

BW -0.5 WW 45 YW 84 MWW 44 Milk 21

**Dam's Prod:** BW 6@82 lbs WW 6@98

\* Triple Polled

\* **Potential Heifer Bull**

\* An attractive made heifer bull that has some shape and thickness to his pattern.

\* Dam has a great disposition with good length and style. This is her 3rd bull to make our sale including last year.

**1514F PRK Firework 1514F \$2500**

Blk Pld 49.2% Salers #725273

SRS Zeus 0509Z	<b>Born</b> 3/12/18
<b>SRS Catalyst 0435C</b>	<b>BW</b> 92 lbs
SRS Patchwork 0435P	<b>205 Wt</b> 727 lbs
SRS Yahtzee 996Y	<b>Index</b> 106
<b>PRK Malibu 1514C</b>	<b>11/10 Wt</b> 838
PRK Malibu 256Z	<b>WDA</b> 3.45 lbs
	<b>Frame</b> 5.7

BW +1.0 WW 46 YW 82 MWW 36 Milk 14

**Dam's Prod:** BW 2@96 lbs WW 2@104

\* Quad Polled

\* A smooth and balanced made bull.

\* Dam is a very good uddered, good milking, and feminine female.

\* Catalyst is a smooth and stylish bull that we have been using with success on our heifers.



**125F PRK Flex 125F \$3000**

HomBlk Pld PB Salers #724587

NJF Top Level 41T	<b>Born</b> 2/25/18
<b>NJF Boulder 46B</b>	<b>BW</b> 95 lbs
NJF Miss Mercury 292Z	<b>205 Wt</b> 677 lbs
SRS Umpire 0584U	<b>Index</b> 99
<b>PRK Juice 125Y</b>	<b>11/10 Wt</b> 872
PRK Juice 725T	<b>WDA</b> 3.38 lbs
	<b>Frame</b> 6.1

**NJF Boulder 46B Sire of 125F & 115F**

BW +0.5 WW 42 YW 79 MWW 36 Milk 16

**Dam's Prod:** BW 6@83 lbs WW 6@95

- \* Quad Polled
- \* Flex is a Purebred bull with good thickness, balance, and eye appeal.
- \* His dam is an extremely long bodied female with a tremendous udder and a great disposition.
- \* His full sister was a 2 yr. old this year that did a good job with her calf.

**211F PRK Foresight 211F \$2500**

HomBlk P/S PB Salers #724657

DJF Zodiac 941Z	<b>Born</b> 3/11/18
<b>DJF Daybreak 264D</b>	<b>BW</b> 72 lbs
DJF Zoey 264Z	<b>205 Wt</b> 642 lbs
DJF Whiskey River9006	<b>Index</b> 94
<b>PRK Heavenly 211Z</b>	<b>11/10 Wt</b> 776
PRK Heavenly 411P	<b>WDA</b> 3.18 lbs
	<b>Frame</b> 5.4

BW -1.6 WW 37 YW 69 MWW 38 Milk 19

**Dam's Prod:** BW 5@84 lbs WW 5@101

- \* Quad Polled
- \* **Potential Heifer Bull**
- \* Should make a sleep all night heifer bull.
- \* His dam is a very balanced and attractively made female that has a good disposition and milk.
- \* Daybreak calves are light birthweight.

**115F PRK Firecracker 115F \$3000**

Red P/S PB Salers #724607

NJF Top Level 41T	<b>Born</b> 2/28/18
<b>NJF Boulder 46B</b>	<b>BW</b> 85 lbs
NJF Miss Mercury 292Z	<b>205 Wt</b> 702 lbs
DJFWhiskeyRiver9006	<b>Index</b> 103
<b>PRK Hickory 115Y</b>	<b>11/10 Wt</b> 884
PRK Hickory 603S	<b>WDA</b> 3.47 lbs
	<b>Frame</b> 6.4

BW -0.1 WW 45 YW 83 MWW 39 Milk 16

**Dam's Prod:** BW 6@86 lbs WW 6@99

- \* **Potential Heifer Bull**
- \* A bull with a moderate birth weight that still has some shape and thickness.
- \* His two full brothers have both made bulls and grew out well.
- \* His dam is an easy fleshing very moderate and deep Purebred female.

**PRK Firecracker 115F Sept. 2018****172F PRK Future 172F \$2500**

Blk Pld 73.7% Salers #724658

DJF Zodiac 941Z	<b>Born</b> 3/11/18
<b>DJF Daybreak 264D</b>	<b>BW</b> 89 lbs
DJF Zoey 264Z	<b>205 Wt</b> 678 lbs
SRS Unreal 0151U	<b>Index</b> 99
<b>PRK Susannah 172Y</b>	<b>11/10 Wt</b> 844
PRK Susannah 887U*	<b>WDA</b> 3.46 lbs
	<b>Frame</b> 5.4

BW -0.9 WW 41 YW 75 MWW 42 Milk 21

**Dam's Prod:** BW 6@79 lbs WW 6@101

- \* Quad Polled
- \* Future has a lot of volume and rib shape.
- \* His dam is a heavy milking female who has put 3 females back in our herd and had an extremely powerful bull last year.
- \* His dam is also the grand dam of the 372F bull in this sale.

**009F PRK Forecast 009F \$2500**

Blk Pld PB Salers #724533

DJF Zodiac 941Z	<b>Born</b> 3/26/18
<b>DJF Daybreak 264D</b>	<b>BW</b> 91 lbs
DJF Zoey 264Z	<b>205 Wt</b> 731 lbs
SRS Umpire 0584U	<b>Index</b> 107
<b>PRK Bridger 009X</b>	<b>11/10 Wt</b> 824
SRS Bridger 0833U	<b>WDA</b> 3.60 lbs
	<b>Frame</b> 5.9

BW +0.9 WW 54 YW 93 MWW 49 Milk 22

**Dam's Prod:** BW 6@96 lbs WW 6@105

- \* Quad Polled
- \* A younger bull with a lot of volume and performance for his age.
- \* His dam is a extremely long female with good thickness and depth and a great disposition.
- \* Bridger was shown by our son, Spencer, for several years at the County Fair.

**PRK 172E Mat. Brother of 172F****305F PRK Finalist 305F \$2500**

Blk Pld PB Salers #724678

DJF Zodiac 941Z	<b>Born</b> 3/19/18
<b>DJF Daybreak 264D</b>	<b>BW</b> 81 lbs
DJF Zoey 264Z	<b>205 Wt</b> 699 lbs
SRS Yahoo 252Y	<b>Index</b> 102
<b>PRK Crimson 305A</b>	<b>11/10 Wt</b> 780
PRK Crimson 705T	<b>WDA</b> 3.31 lbs
	<b>Frame</b> 5.5

BW -0.6 WW 44 YW 75 MWW 46 Milk 25

**Dam's Prod:** BW 4@78 lbs WW 4@103

- \* Quad Polled
- \* **Potential Heifer Bull**
- \* This heifer bull has a lot of length of body.
- \* His dam is an attractive well made Purebred cow who milks heavy and has an excellent disposition.

**PRK Bridger 009X Dam of 009F**





Our family wants to express our sincere appreciation  
for your interest and support of our program!  
It truly makes the whole process worth the effort when we  
can produce seedstock that allows you to be profitable in  
doing what you enjoy.  
**Thank You!**



Parke Ranch  
7 Peppergrass Lane  
Drummond, Mt 59832

**Parke Ranch**  
**Maternal Power**  
**Bull Sale 2018**  
Dec. 4th thru 12th  
**Drummond, Mt**

