

2020 Parke Ranch

Maternal Power Production Sale

Silent Auction Format

Dec. 7th thru 15th, 2020

At the Ranch

Drummond, Montana



90 Head Sell
60 Bulls
30 Bred Heifers



parkeranch@gmail.com

www.parkeranch.com

406-288-3573 or 406-240-4167

2020

Maternal Power Production Sale

Silent Auction Format

December 7th thru 15th
At the Ranch - Drummond, Mt

90 Head Sell
60 Bulls
30 Bred Heifers



We want to welcome you to our 5th Annual Maternal Power Production Sale. This years sale includes 60 bulls (which are from the top 40% of our male calf crop) and 30 head of commercial bred heifers from our replacement heifers. These cattle are bred with a focus on maternal strength and profit driven traits for the commercial cow/calf operation. Our cow herd is continually sorted and strictly culled on performance, efficiency, fertility, structure, udder quality, disposition, and phenotype. We have been selling seed stock for over 20 years now and are excited about our direction and progress. We are grateful for you taking time to look at our sale offering and feel confident that you will find genetics that can help you move your operation in a positive direction.

The cattle will again be offered in a silent auction format running over a 9 day sale period. We are aware this is a unique sale structure, but we feel it is a low pressure and flexible way for you to purchase the genetics that will fit your selection and budget criteria. We continue to receive positive feedback on the sale format from past customers. We are happy to answer any questions you might have regarding the sale procedure. We hope the timing and length of the sale will allow you to come and view the sale offering and cow herd at your convenience. This will allow us to visit about your needs and answer any questions you might have. If you are unable to come to the ranch we will have a video of the individual bulls and the heifer groups available for viewing through a link on our website prior to Dec. 1st.

2020 has certainly been an interesting year full of both old and unexpected new challenges. We are ever more grateful to be living in rural America! What a tremendous blessing to be surrounded by and working with family and good people! Melanie has spent the last year, since graduation, working at World West Sire Services near Billings, Mt. We are excited for her as she will soon be starting a new chapter in her life. She will be marrying Monson Wadsworth the day after the sale and moving to Idaho. Joseph, Aubrey, and Jaycie are now living next door to us which is lots of fun. Joseph is working on the ranch full time and Aubrey is finishing up schooling online. Spencer returned from his mission in April and spent the summer at home working. He has now started college in Rexburg, ID studying all things Ag. Deana is already a senior in high school and Scott has joined her as a freshman. They help out a lot around the ranch between school and sports, so maybe I should say not a lot other than during the summer.

We so much appreciate your interest and support of our program over the years! It is great to be in a business where we can call customers our friends! We are truly honored to be entrusted with your confidence in our program and will do all we can to maintain that trust! We look forward to visiting with you this December!



Parke Ranch

Sale Procedure:

- * Cattle will sell in a silent auction format with bidding opening at noon on Monday Dec. 7th, 2020.
- * Bulls have a starting base price which is listed in the catalog (\$2,500, \$3,000, & \$3,500). Bred Heifers will sell in small groups with a starting base price on a per head basis.
- * Bidders may place a bid at base price on any lot without a bid or raise the bid by a minimum of \$100 on any bull or \$25 on any heifer lots with a current bid. Bidding will be open until the sale closes on Tuesday Dec. 15th at 2 pm (Mountain Time).
- * Bids may be placed with Eaf or Joseph via phone, text, email, or in person at any time during the sale period.
- * Any lots receiving an increasing bid on Tuesday Dec. 15th may have an oral bid off at the sales close. This would involve the last bidder prior to the 15th and any bidders on the 15th. Bid offs will be handled in order of price and as quickly as the contending bidders can be reached after 2 pm.
- * Any lots without a bid during the 15th are considered sold to the leading bidder when the sale closes at 2 pm on the 15th.
- * Any lots without a base bid will be available for sale at the base price at the conclusion of the sale on a first come basis.
- * We would encourage bidding early in the sale period to reduce the number of bid offs and to allow you to move to other lots.
- * A spreadsheet will be updated frequently with current bids on our website at www.parkeranch.com or you may request update notifications if your bidding status changes.

Sale Terms and Details:

- * Females need to be picked up by the buyers before Dec. 31st.
- * 1/2 of purchase price is due at sales conclusion with the balance due at delivery.
- * Bulls will be fed free of charge and at our risk until delivery beginning around March 20th.
- * Bulls will be delivered free of charge up to 500 miles with any additional mileage at cost.
- * All bulls are fully guaranteed for the first breeding season for disposition, structural soundness, and fertility.
- * We will notify you as soon as possible if any bulls are injured in our care or do not pass the semen test. You may select a replacement bull if one is available, future credit, or receive a refund of your initial payment.
- * Parke Ranch is retaining 1/3 semen interest on all sale bulls and will collect semen before delivery, at our cost, on any we desire to use in our AI program. You have full salvage value.
- * A volume discount of 5% will be given on any purchase of 5 or more bulls.

Bull History & Development:

- * Bulls had actual birthweights taken with a scale at birth.
- * They have been raised without creep. Just milk and grass.
- * Sale bulls are from the top 40% of our male calves. They were sorted many times based on dam quality, birthweight, disposition, confirmation, performance, and soundness.
- * Bulls were weaned on October 5th and are being fed free choice long stem mixed hay and 6 lbs of bull challenger pellets.
- * They will be fed for a 2.8 lbs/day gain to grow them out sufficiently while ensuring their soundness and longevity.
- * Bulls will be semen tested and vaccinated in March and be ready for turn out when delivered.
- * Fall vaccinations included: Vision 8, Pyramid 5, Autogenous Type A, Autogenous Respiratory, Multi-Min, and Footrot. Spring vaccinations: Vision 8, Pyramid 5, Reprostar VL5 HB, & Footrot.

Catalog Details:

- * All double black bulls were DNA tested for coat color and those found to be homozygous black are designated in catalog.
- * Lot base prices are found in the upper right hand corner.
- * Dams average on calves birthweights and weaning indexes are listed along with her udder score (the first digit represents her udder suspension and the second digit is teat size, with 9 being the best and 1 the worst).
- * The listed EPD's are from the American Salers Association.

Cattle Inspection:

- * Cattle are available for inspection at any time now or during the sale period. If you desire to call ahead we can make accommodations to improve your viewing experience.
- * Have lunch on us. Plan a little extra time when you come to look at cattle and have a famous Parkers Hamburger on us at the restaurant in Drummond (they are closed Sun. & Mon.).
- * Exit interstate 90 at Drummond and head south on Hwy #1. After 2.6 miles turn east on Mullan Road and then travel 1.5 miles and our ranch is on the left.

Additional Information:

- * A video of the individual bulls and heifer groups will be up on our website before Dec. 1st.
- * We will have updated weights and scrotal measurements on all sale bulls at the start of the sale. These will be available on our website or when you come to view the cattle.

New at Parke Ranch:

- * We have a few bulls available again this year that are a 3 way cross of Salers X Angus X Simmental. Please see page 21 for more details and a further explanation.

Eaf's Cell: 406-240-4167

Home: 406-288-3573

Joseph's Cell: 406-396-0369

Email: parkeranch@gmail.com

Web page: www.parkeranch.com

We Believe In.... Will Represent Honestly.... And Stand Behind our Cattle!

Reference Sires

Black **SRS El Dorado 4147E** 2/27/17
Polled 50% Salers #717808

SOO Line Motive 9016 HK Kodiak 5R
 TLA Beauty 5R
SRS Bottom Line 978B
 SRS Juliet 0584R MAC Lansing 302L
 SRS Juliet 9609F
 SRS Zeus 0509Z SITZ Uncommon
 PRK Miss Montana 503R
SRS Pony Tail 4147B
 SRS Pony Tail 0778T S T S Rembrandt 8300R
 SRS Pony Tail 0302N

CED	BW	WW	YW	MWW	Milk	Fat	REA	Marb.	Doc.	Stay.
+14.3	-1.9	+53	+81	+47	+21	-0.03	+0.51	+0.4	+5	+14



Hom Black **SRS Entity 4108E** 2/27/17
Polled 50% Salers #717910

Connealy Consensus KMK Alliance 6595 I87
 Blinda of Conanga 004
Connealy Big Time 1251 7743
 Breeta of Conanga 525 Connealy Freight 232
 Britta of Conanga 5527
 LYZS Rowdy 28R JSR Cummings 169
 LYZS Melody 54M
SRS Columbia 4108B
 SRS Columbia 0530R MAC Lansing 302L
 SRS Columbia 0324N

CED	BW	WW	YW	MWW	Milk	Fat	REA	Marb.	Doc.	Stay.
+10.2	+0.3	+66	+101	+50	17	-0.03	+0.43	+0.5	+8	+14



Hom Black **MJB Gladiator 305B** 2/2/14
Polled/SC 50% Salers #694609

SRS Xtra 0347X SRS Uprising 0059U
 SRS Norah 0347N
SRS Spartacus 0670Z
 SRS Seiko 0670S SRS Nevada 9378N
 SRS Priceless 0447P
 MJB Barbwire 260S W Power Boss 203P
 MS W Independence
MJB Barbie 126Z
 MJB Morgiana 102S Morgans Direction 111 9901
 MJB Puma 103P

CED	BW	WW	YW	MWW	Milk	Fat	REA	Marb.	Doc.	Stay.
+13.6	+1.4	+72	+97	+53	+17	-0.04	+0.72	+0.3	+8	+20



Hom Black **MAC Enduro 43E** 2/4/17
Hom. Polled 50% Salers #720903

Connealy Consensus 7229 Connealy Consensus
 Blue Lilly of Conanga 16
Connealy Comrade 1385
 Happy Gee of Conanga G A R New Design 5050
 HAP Gina of Conanga 260
 S Nebraska 330N D Limited Edition 179L
 S Black Lady 50K
MAC Carina 176C
 MAC Willow 134W MAC Lennox 314L
 MAC Kesia 322K

CED	BW	WW	YW	MWW	Milk	Fat	REA	Marb.	Doc.	Stay.
+16.9	-1.3	+62	+97	+54	+23	-0.03	+0.55	+0.6	+12	+16

Hom Black **GGT Final Choice 119B** 1/7/14
Hom. Polled 62.5% Salers #695914

GGT P Heavy Duty 100J GGT P BLK Design 51D
 GGT MS P BLK Dusty 105E
GGT P BLK Heavy Hitter
 GGT P Harrah 195K MAC Gunsmoke 118G
 GGT Jewel 285S
 S A V Final Answer 0035 SITZ Traveler 8180
 S A V Emulous 8145
GGT MS Finality 139Y
 GRNO New Design 260P
 GGT Designer 222W GGT P Charisma 315K

CED	BW	WW	YW	MWW	Milk	Fat	REA	Marb.	Doc.	Stay.
+16.4	-4.7	+69	+92	+48	+13	-0.07	+0.62	+0.3	+14	+19

Reference Sires

Black **PRK Flint 198F** **3/15/18**

Polled **50% Salers** **#724634**

SOO Line Motive 9016 HF Kidiak 5R
TLA Beauty 5R
SRS Bullseye 592B
SRS Juliet 0584R MAC Lansing 302L
SRS Juliet 9609F
SRS Wanted 0218W SAV 004 Density 4336
SRS Juliet 0218M
PRK Virginia 198Y
PRK Virginia 898U SRS Nokia 9722N
PRK Virginia 298M

CED	BW	WW	YW	MWW	Milk	Fat	REA	Marb.	Doc.	Stay.
+15.3	-3.0	+48	+64	+39	+15	-0.04	+0.49	+0.3	+22	+12



Hom Black **MAC Earthquake 158E** **2/21/17**

Hom Polled **PB Salers** **#720946**

That's Zepplin 134Z JCGC Wide Load 1948W
JCGC Utterly Gorgeous
MAC Centennial 167C
MAC Wynne 258W MAC Navigator 281N
MAC Swan 161S
WHR Wyo Diamond JCG Diamond
TSB PLD Tess 111T
MAC Zinnia 207Z
MAC Von 383X MAC Thunder 15T
MAC Taffie 349T

CED	BW	WW	YW	MWW	Milk	Fat	REA	Marb.	Doc.	Stay.
+10.3	+2.8	+67	+90	+54	+20	-0.11	+0.75	+0.3	0	+16



Red **PRK Fenway 384F** **2/25/18**

Polled **50% Salers** **#724583**

C-Bar Evolution 107Y TR Colt 45 UT806
LGS Abby 689S
DJF Border Line 815A
STCY Unity 815U S Nebraska 330N
STCY Natalie 315N
SRS WDA 270W S A V 004 Density 4336
SRS Footloose 9927J
PRK Lass 384A
PRK Lass 184Y SRS United 0653U
PRK Lass 864U

CED	BW	WW	YW	MWW	Milk	Fat	REA	Marb.	Doc.	Stay.
+13.5	+0.5	+63	+100	+48	+17	-0.03	+0.51	+0.4	+19	+10



Hom Black **SRS Forward 0984F** **2/1/18**

Polled **50% Salers** **#725573**

SRS Bullseye 592B SOO Line Motive 9016
SRS Juliet 0584R
SRS Dialed In 3160D
SRS Suzette 3160 SRS Uprising 0059U
SRS Suzette 0675S
SRS Recruit 0122R BT Right Time 24J
SRS Aura 0122L
SRS Seiko 0984W
SRS Seiko 0670S SRS Nevada 9378N
SRS Priceless 0447P

CED	BW	WW	YW	MWW	Milk	Fat	REA	Marb.	Doc.	Stay.
+12.8	-3.1	+56	+78	+50	+22	-0.04	+0.62	+0.3	+14	+16

Hom Black **PRK Fullback 280F** **3/2/18**

Polled **50% Salers** **#724622**

MAC Quarterback 58Y MAC F1 Sundance 4S
WJM Wilma 120W
MJB Elway 322C
MJB Yellow Rose 156Z TSB Tulsa 82W
Mis 92F Masterpiece
SRS Xpert 0881X SRS Patent 0221P
SRS Priceless 0881U
PRK Rosebud 280Z
PRK Rosebud 070X PRK Tonka 298T
PRK Rosebud 870U

CED	BW	WW	YW	MWW	Milk	Fat	REA	Marb.	Doc.	Stay.
+10.9	+0.8	+72	+101	+54	+18	-0.05	+0.60	+0.4	+21	+17

Reference Sires

Hom Black **Hook's Eagle 6E** 1/22/17
 Hom Polled 75% Simm 25% AN #730666

Hook's Xavier 14x
 Hook's Black Hawk 50B
 Hook's Yvette 100Y
 GW-WBF Substance 820Y
 Hook's Crystal 1C
 Hook's Underestimated 6U

CED	BW	WW	YW	MWW	Milk	Fat	REA	Marb.	Doc.	Stay.
+15.0	-1.8	+104	+166	+72	+20	-0.07	+1.19	+0.5	+20	+16



Hom Black **S D S Graduate 006X** 2/4/10
 Hom Polled 62.5% Simm 37.5% AN #737322

Nichols Legacy G151
 Hook's Shear Force 38K
 C&D Tracy
 ALC Big Eye D09N
 S D S Queen 814U
 S D S Queen 443P

Nichols BLK Destiny D12
 Nichols Debra D81
 Circle S Leachman 600U
 Betsy
 CA Future Direction 5321
 ALC Hazel L12L

CED	BW	WW	YW	MWW	Milk	Fat	REA	Marb.	Doc.	Stay.
+16.8	-3.8	+77	+117	+63	+25	-0.07	+1.11	-0.1	+12	+20



EPD's - Expected Progeny Differences

Over the past couple of decades EPD's have become a leading industry tool for comparing performance, maternal, and carcass traits of different animals within a breed. They have continued to become more accurate at predicting the level of anticipated performance of an animals offspring. This allows producers to select animals that will maintain or help make progress towards breeding program goals. This past year the Salers Association became part of International Genetics Solutions (IGS). IGS is a multi-breed genetic evaluation that is the world's largest beef cattle database with nearly 20 million animals. It is made up of 17 different breed associations in the USA or Canada. This provides more accurate EPD's, the ability to incorporate genomic DNA, and the ability to directly compare individual animals from the different breeds involved in IGS (Salers, Simmental, Red Angus, Gelbvieh, Limousin, South Devon, Shorthorn, and Chianina). With the movement to IGS there are some adjustments needed in comparing this years EPD's to past years. Below is a chart showing where the main list sires averages were in 2019 compared to the new 2020 EPD's.

Main List Sires	CED	BW	WW	YW	MWW	Milk	Marb	REA	Doc	Stay
2019 EPD's	+0.3	+1.6	+42.7	+80	+41.5	+20.2	-0.4	+0.08	+9.8	+23.9
2020 IGS EPD's	+12.2	+0.2	+53	+75	+42.5	+16	0.0	+0.61	+8	+15

For example if in past years you were looking for bulls with EPD's under +2.0 BW that will now correlate to +0.6. If desired WW was over +40 it would now be +50.3. If you were looking for Milk above +15 you would now want over +10.8. Please ask if you have any questions as we recalculate our targets. Note that all bulls in the sale, no matter their breed make up, have directly comparable EPD's.

Optimizers



466H PRK Homestead 466H \$3500

Hom Black		Polled	50.0% SA		#738200	
Born	Adj BW	205 Wt	Index	11/12 Wt	WDA	Frame
3/8/20	86 lbs	741 lbs	105	880 bs	3.53 lbs	5.6

SRS Bottom Line 978B	SOO Line Motive 9016	Dam's Production	
SRS El Dorado 4147E	SRS Juliet 0584R	BW	5 @ 82
SRS Pony Tail 4147B	SRS Zeus 0509Z	WW	5 @ 99
SRS Zeus 0509Z	Sitz Uncommon	Udder	77
PRK Lady 466B	PRK Miss Montana 503R		
PRK Lady 466P	SRS Marksman 0059M		
	PRK Lady 146L		

CED	BW	WW	YW	MWW	Milk	Marb.	REA	Doc.	Stay.
+14.0	-2.3	+50	+71	+46	+21	+0.4	+0.41	0	+15

- * **Potential Heifer Bull** - Quad Polled
- * A balanced, attractive made, complete bull, whose dam would suggest he could be used affectively on heifers.
- * This bull comes from a cow family that has demonstrated great longevity in our cow herd.



499H PRK Hinze 499H \$3500

Black		Polled	50.0% SA		#738201	
Born	Adj BW	205 Wt	Index	11/12 Wt	WDA	Frame
3/4/20	100 lbs	799 lbs	113	956 lbs	3.78 lbs	6.7

SRS Bottom Line 978B	SOO Line Motive 9016	Dam's Production	
SRS El Dorado 4147E	SRS Juliet 0584R	BW	5 @ 88
SRS Pony Tail 4147B	SRS Zeus 0509Z	WW	5 @ 107
SRS United 0653U	SRS Saint 0218S	Udder	99
PRK Kit 499B	SRS Starr 0653S		
PRK Kit 999W	SRS Marksman 0059M		
	PRK Kit 245M		

CED	BW	WW	YW	MWW	Milk	Marb.	REA	Doc.	Stay.
+14.2	-1.1	+54	+80	+50	+23	+0.4	+0.46	+15	+17

- * Quad Polled
- * This is a powerful bull with a lot of eye appeal, and is tied for second highest WDA in the optimizer bulls.
- * The dam is a deep bodied high performance female, whose three daughters have all been retained as replacements.



899H PRK Hero 899H \$3500

Black		Polled	50.0% SA		#738204	
Born	Adj BW	205 Wt	Index	11/12 Wt	WDA	Frame
2/18/20	88 lbs	768 lbs	108	914 lbs	3.41 lbs	6.3

SRS Bottom Line 978B	SOO Line Motive 9016	Dam's Production	
SRS El Dorado 4147E	SRS Juliet 0584R	BW	1 @ 88
SRS Pony Tail 4147B	SRS Zeus 0509Z	WW	1 @ 108
DJF Border Line 815A	SRS Pony Tail 0778T	Udder	88
PRK Kit 899F	C-Bar Evolution 107Y		
PRK Kit 599C	STCY Unity 815U		
	SRS Zeus 0509Z		
	PRK Kit 999W		

CED	BW	WW	YW	MWW	Milk	Marb.	REA	Doc.	Stay.
+14.6	-1.8	+57	+86	+50	+21	+0.4	+0.48	+12	+11

- * Quad Polled
- * Hero has been catching our eye since a young calf. He has great length and thickness out of an impressive young cow.
- * This bulls dam is a long bodied, deep made, young female from a great cow family in our herd that has several bulls in this sale.



Optimizers



372H

PRK Hunk 372H

\$3500

Hom Black		Polled	50.0% SA		#738205	
Born	Adj BW	205 Wt	Index	11/12 Wt	WDA	Frame
2/26/20	81 lbs	728 lbs	103	906 lbs	3.48 lbs	5.8

Connealy Big Time	Connealy Consensus	Dam's Production
SRS Entity 4108E	Breeta of Conanga 525	BW 6 @ 81
SRS Columbia 4108B	LYZS Rowdy 28R	WW 5 @ 98
SRS United 0653U	SRS Saint 0218M	Udder 78
PRK Susannah 372A	SRS Starr 0653S	
PRK Susannah 172Y	SRS Unreal 0151U	
	PRK Susannah 887U	

CED	BW	WW	YW	MWW	Milk	Marb.	REA	Doc.	Stay.
+14.5	-1.7	+57	+83	+46	+18	+0.4	+0.39	+12	+17

* **Potential Heifer Bull** - Quad Polled

* This bull is a light birthweight calf, that still possesses good thickness, dimension and performance in a very stylish package.

* Hunk has the look of a herd sire and is backed by 3 Gold Dams in his pedigree.

* The dam is good milking, deep bodied and thick made.



372H

480H

PRK Haymaker 480H

\$3500

Hom Black		Scurred	50.0% SA		#738206	
Born	Adj BW	205 Wt	Index	11/12 Wt	WDA	Frame
2/27/20	100 lbs	759 lbs	107	972 lbs	3.75 lbs	6.3

Connealy Big Time	Connealy Consensus	Dam's Production
SRS Entity 4108E	Breeta of Conanga 525	BW 5 @ 93
SRS Columbia 4108B	LYZS Rowdy 28R	WW 5 @ 102
SRS Spartacus 0670Z	SRS Xtra 0347X	Udder 89
PRK Rosebud 480B	SRS Seiko 0670S	
PRK Rosebud 280Z	SRS Xpert 0881X	
	PRK Rosebud 070X	

CED	BW	WW	YW	MWW	Milk	Marb.	REA	Doc.	Stay.
+12.9	-0.1	+63	+93	+51	+19	+0.4	+0.43	+13	+19

* Quad Polled

* Powerful, deep made bull, with the fourth highest WDA among the optimizer bulls.

* His dam is a heavy milking, good uddered, long made, balanced female. She has had 2 top bulls in previous sales.

* She is also a maternal sister to PRK Fullback.



480H



081H

PRK Houston 081H

\$3500

Black		Polled	50.0% SA		#737446	
Born	Adj BW	205 Wt	Index	11/12 Wt	WDA	Frame
3/18/20	95 lbs	745 lbs	105	876 lbs	3.67 lbs	6.3

Connealy Comrade 1385	Connealy Consensus 7229	Dam's Production
MAC F1 Enduro 43E	Happy Gee of Conanga 919	BW 9 @ 89
MAC Carina 176C	S Nebraska 330N	WW 9 @ 103
SRS Unreal 0151U	MAC Willow 134W	Udder 78
PRK Gina 081X	SRS Marksman 0059M	
PRK Gina 9713G	SRS Lynn 0151L	
	SRS Outlook 9329E	
	9551 AN Dam	

CED	BW	WW	YW	MWW	Milk	Marb.	REA	Doc.	Stay.
+14.5	-0.7	+54	+77	+50	+23	+0.5	+0.47	+9	+16

* Quad Polled

* A young, solid made and attractive bull, with good performance

* His dam is a well proven top cow in our herd. She is a moderate framed, good milking, and consistent female.

Optimizers

384H PRK Heritage 384H \$3000

Black		Polled		50.0% SA		#737450	
Born	Adj BW	205 Wt	Index	11/12 Wt	WDA	Frame	
3/22/20	93 lbs	766 lbs	108	866 lbs	3.69 lbs	6.1	

Connealy Comrade 1385	Connnealy Consensus 7229	Dam's Production	
MAC F1 Enduro 43E	Happy Gee of Conanga 919	BW	6 @ 91
MAC Carina 176C	S Nebraska 330N	WW	6 @ 105
SRS WDA 270W	MAC Willow 134W	Udder	99
PRK Lass 384A	SAV 004 Density 4336		
PRK Lass 184Y	SRS Footloose 9927J		
	SRS United 0653U		
	PRK Lass 864U		

CED	BW	WW	YW	MWW	Milk	Marb.	REA	Doc.	Stay.
+14.9	0.0	+62	+94	+50	+19	+0.5	+0.54	+13	+17

- * Quad Polled
- * A young calf with good performance and super length.
- * His dam is a Gold Dam, with ideal body type, great milk and a perfect udder. Her pervious two bulls were top sellers, and her son PRK Fenway has several AI sons in the sale.

657H PRK Hookshot 657H \$3000

Hom Black		Polled		50.0% SA		#737454	
Born	Adj BW	205 Wt	Index	11/12 Wt	WDA	Frame	
3/5/20	85 lbs	695 lbs	98	888 lbs	3.52 lbs	5.5	

Connealy Comrade 1385	Connnealy Consensus 7229	Dam's Production	
MAC F1 Enduro 43E	Happy Gee of Conanga 919	BW	3 @ 83
MAC Carina 176C	S Nebraska 330N	WW	3 @ 95
SRS Bullseye 592B	MAC Willow 134W	Udder	99
PRK Gina 657D	SOO Line Motive 9016		
PRK Gina 857U	SRS Juliet 0584R		
	JBS Lancelot JR 81L		
	PRK Gina 9713G		

CED	BW	WW	YW	MWW	Milk	Marb.	REA	Doc.	Stay.
+13.6	-1.4	+54	+80	+46	+19	+0.5	+0.55	+15	+14

- * Quad Polled
- * He is a long bodied bull with a thick quarter and a wide top.
- * His dam is a moderate, very feminine female, with a great udder structure.

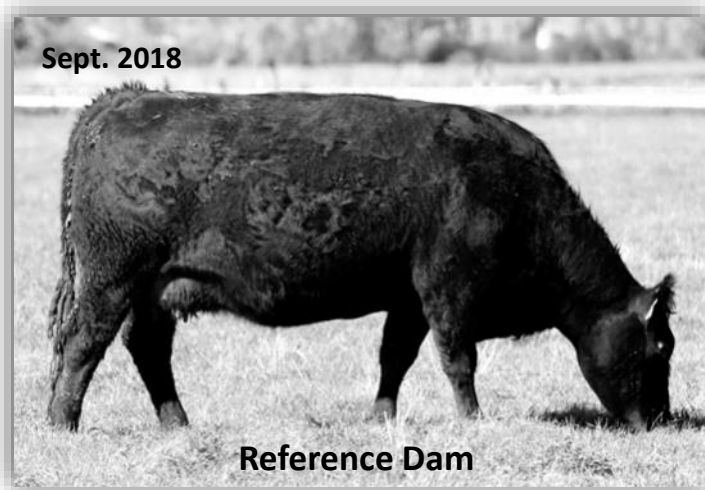
729H PRK Harvester 729H \$3500

Black		Polled		62.5% SA		#737456	
Born	Adj BW	205 Wt	Index	11/12 Wt	WDA	Frame	
3/5/20	103 lbs	726 lbs	102	878 lbs	3.48 lbs	5.6	

Connealy Comrade 1385	Connnealy Consensus 7229	Dam's Production	
MAC F1 Enduro 43E	Happy Gee of Conanga 919	BW	2 @ 91
MAC Carina 176C	S Nebraska 330N	WW	2 @ 100
DJF Border Line 815A	MAC Willow 134W	Udder	88
PRK Hannah 729E	C-Bar Evolution 107Y		
PRK Hannah 419B	STCY Unity 815U		
	SRS United 0653U		
	PRK Hannah 219Z		

CED	BW	WW	YW	MWW	Milk	Marb.	REA	Doc.	Stay.
+12.0	+1.9	+66	+102	+53	+20	+0.5	+0.57	+23	+14

- * Quad Polled
- * This is a moderate framed, thick made and long bodied bull with a very attractive profile.
- * His dam is a very balanced, attractive, high quality young cow. A maternal sister to PRK Hollywood 419H in the sale.



Reference Dam

PRK Lass 384A

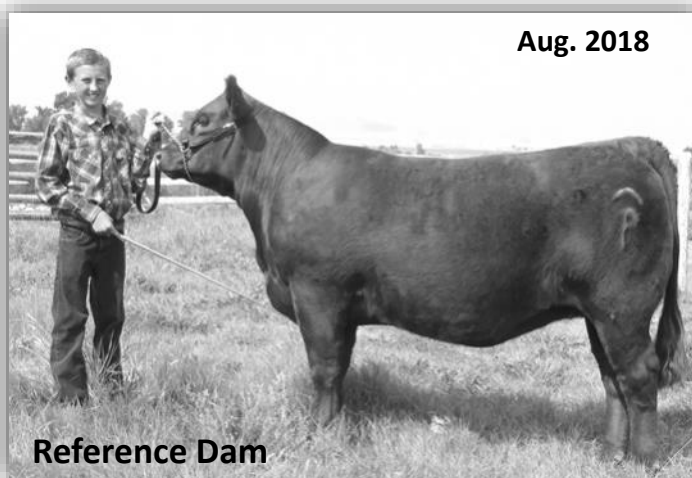
763H PRK Hank 763H \$2500

Hom Black		Polled		50.0% SA		#737458	
Born	Adj BW	205 Wt	Index	11/12 Wt	WDA	Frame	
2/28/20	80 lbs	679 lbs	96	818 lbs	3.17 lbs	5.3	

Connealy Comrade 1385	Connnealy Consensus 7229	Dam's Production	
MAC F1 Enduro 43E	Happy Gee of Conanga 919	BW	2 @ 84
MAC Carina 176C	S Nebraska 330N	WW	2 @ 94
MJB Elway 322C	MAC Willow 134W	Udder	99
PRK Pigeon 763E	MAC Quarterback 58Y		
PRK Pigeon 593C	MJB Yellow Rose 156Z		
	SRS Spartacus 0670Z		
	PRK Pigeon 393A		

CED	BW	WW	YW	MWW	Milk	Marb.	REA	Doc.	Stay.
+15.9	-1.7	+58	+85	+46	+18	+0.6	+0.52	+14	+17

- * **Potential Heifer Bull**– Quad Polled
- * His dam is a good uddered young cow.
- * Enduro is a bull we purchased with MJB Salers from Mac-Donalds in their 2018 sale. His first calves have good depth and length with an average 103 weaning index.



Reference Dam

PRK Hannah 729E - As a Bred Heifer

Optimizers

766H

PRK Hefty 766H

\$3000

Black		Polled		50.0% SA		#737460	
Born	Adj BW	205 Wt	Index	11/12 Wt	WDA	Frame	
3/15/20	97 lbs	738 lbs	104	852 lbs	3.52 lbs	5.7	

Connealy Comrade 1385	Connnealy Consensus 7229	Dam's Production	
MAC F1 Enduro 43E	Happy Gee of Conanga 919	BW	2 @ 86
MAC Carina 176C	S Nebraska 330N	WW	2 @ 103
	MAC Willow 134W	Udder	99
MJB Elway 322C	MAC Quarterback 58Y		
PRK Lady 766E	MJB Yellow Rose 156Z		
PRK Lady 466P	SRS Marksman 0059M		
	PRK Lady 146L		

CED	BW	WW	YW	MWW	Milk	Marb.	REA	Doc.	Stay.
+12.9	-0.1	+59	+85	+50	+21	+0.5	+0.49	+14	+16

- * Quad Polled
- * A moderate, square made, thick ended bull.
- * His dam is a good young female, and is the maternal sister to the dam of 466H.

Sept. 2020



766H

Sept. 2020



287H

287H

PRK Heavy Duty 287H

\$3500

Hom Black		Polled		50.0% SA		#737480	
Born	Adj BW	205 Wt	Index	11/12 Wt	WDA	Frame	
3/6/20	102 lbs	803 lbs	113	978 lbs	3.90 lbs	6.0	

MJB Elway 322C	MAC Quarterback 58Y	Dam's Production	
PRK Fullback 280F	MJB Yellow Rose 156Z	BW	7 @ 89
PRK Rosebud 280Z	SRS Xpert 0881X	WW	6 @ 106
	PRK Rosebud 070X	Udder	79
SRS WDA 270W	SAV 004 Density 4336		
PRK Gina 287Z	SRS Footloose 9927J		
PRK Gina 087X	SRS Uprising 0059U		
	PRK Gina 857U		

CED	BW	WW	YW	MWW	Milk	Marb.	REA	Doc.	Stay.
+10.1	+1.2	+71	+103	+53	+17	+0.4	+0.64	+18	+18

- * Quad Polled
- * This is a bull that is loaded with performance and has the highest WDA among the optimizer bulls. He has tons of power with lots of muscle, a thick top and great length.
- * His dam is a good dispositioned, moderate framed, deep and thick bodied female. She is a heavy milking female with great teat size. All of her calves have been keepers, with her only other bull being a top seller in our 2017 bull sale.

389H

PRK Headway 389H

\$2500

Black		Polled		50.0% SA		#737481	
Born	Adj BW	205 Wt	Index	11/12 Wt	WDA	Frame	
3/4/20	97 lbs	705 lbs	99	882 lbs	3.49 lbs	5.8	

MJB Elway 322C	MAC Quarterback 58Y	Dam's Production	
PRK Fullback 280F	MJB Yellow Rose 156Z	BW	6 @ 82
PRK Rosebud 280Z	SRS Xpert 0881X	WW	6 @ 100
	PRK Rosebud 070X	Udder	87
PRK Yellowstone 966Y	SRS Uprising 0059		
PRK Lori 389A	PRK Recipe 966W		
PRK Lori 789T	SRS Recruit 0122R		
	PRK Lori 542R		

CED	BW	WW	YW	MWW	Milk	Marb.	REA	Doc.	Stay.
+11.8	+0.6	+62	+90	+49	+18	+0.4	+0.59	+18	+17

- * Quad Polled
- * A long spined bull with lots of muscle dimension. He has 3 Gold Dams in his pedigree.
- * His dam is a good milking, deep bodied female.

Sept. 2020



389H

Optimizers

456H

PRK Helix 456H

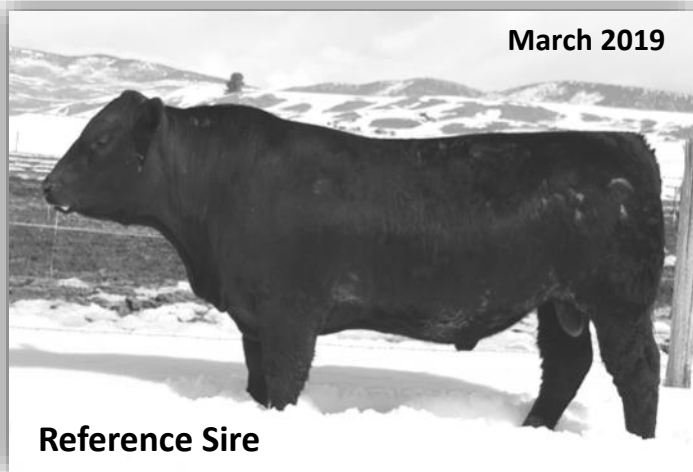
\$3000

Hom Black		Polled	50.0% SA		#737483	
Born	Adj BW	205 Wt	Index	11/12 Wt	WDA	Frame
3/4/20	85 lbs	699 lbs	99	838 lbs	3.31 lbs	5.9

MJB Elway 322C PRK Fullback 280F PRK Rosebud 280Z		MAC Quarterback 58Y MJB Yellow Rose 156Z SRS Xpert 0881X PRK Rosebud 070X		Dam's Production BW 5 @ 81	
MAC F1 Humboldt 312Z PRK 456B PRK 266Z		Werner War Party 2417 MAC BLK Melody 243M SRS Xtra 0347X PRK Savanna 646S		WW 5 @ 101 Udder 88	

CED	BW	WW	YW	MWW	Milk	Marb.	REA	Doc.	Stay.
+13.3	-0.9	+60	+84	+49	+19	+0.4	+0.56	+16	+16

- * This is a wide topped, long bodied bull.
- * His dam is an excellent dispositioned, good milking female with a very good udder.
- * Fullback was the top selling bull in our 2018 sale to Bruce Thurgood. His first calves are very long and wide topped.



Reference Sire

PRK Fullback 280F - As a Yearling

853H

PRK Holster 853H

\$3500

Black		Polled	50.0% SA		#737487	
Born	Adj BW	205 Wt	Index	11/12 Wt	WDA	Frame
2/22/20	91 lbs	767 lbs	108	916 lbs	3.47 lbs	5.8

MJB Elway 322C PRK Fullback 280F PRK Rosebud 280Z		MAC Quarterback 58Y MJB Yellow Rose 156Z SRS Xpert 0881X PRK Rosebud 070X		Dam's Production BW 1 @ 91	
SRS Duracell 252D PRK Ginger 853F PRK Ginger 653D		DJF Border Line 815A PRK Robbie 252Z SRS Ariat 270A PRK Ginger 333A		WW 1 @ 108 Udder 99	

CED	BW	WW	YW	MWW	Milk	Marb.	REA	Doc.	Stay.
+13.8	-0.1	+66	+98	+52	+19	+0.4	+0.56	+18	+14

- * Quad Polled
- * He is an easy going bull with lots of length and a thick top.
- * His dam is an extremely well made young female with good milk and an excellent disposition.

461H

PRK Headstart 461H

\$3500

Hom Black		Polled	50.0% SA		#738216	
Born	Adj BW	205 Wt	Index	11/12 Wt	WDA	Frame
3/6/20	91 lbs	721 lbs	102	870 lbs	3.47 lbs	5.7

Connealy Greeley SRS Dundee 270D SRS Finicky 0838U		Connealy Confidence 0100 Precious of Conanga 0484 Cro Survey 615S SRS Finicky 9809H		Dam's Production BW 4 @ 79	
SRS United 0653U PRK Rhonda 461B PRK Rhonda 541R		SRS Saint 0218S SRS Starr 0653S SRS Nokia 9722N PRK Nancy 347N		WW 4 @ 98 Udder 77	

CED	BW	WW	YW	MWW	Milk	Marb.	REA	Doc.	Stay.
+13.7	+0.8	+55	+78	+47	+20	+0.4	+0.51	+3	+17

- * Quad Polled
- * This is a thick made, deep bodied bull. He has four Gold Dams in his pedigree and a dam who milks well.
- * SRS Dundee has consistently sired calves with tremendous depth and thickness.

272H

PRK Herdsman 272H

\$3500

Hom Black		Polled	50.0% SA		#737432	
Born	Adj BW	205 Wt	Index	11/12 Wt	WDA	Frame
3/25/20	93 lbs	783 lbs	111	884 lbs	3.81 lbs	6.2

Connealy Greeley SRS Dundee 270D SRS Finicky 0838U		Connealy Confidence 0100 Precious of Conanga 0484 Cro Survey 615S SRS Finicky 9809H		Dam's Production BW 7 @ 90	
SRS Xtra 0347X PRK Unity 272Z PRK Unity 892U		SRS Uprising 0059U SRS Norah 0347N SRS Nokia 9722N 9792 SA/AN		WW 6 @ 104 Udder 88	

CED	BW	WW	YW	MWW	Milk	Marb.	REA	Doc.	Stay.
+11.5	+1.8	+63	+88	+52	+21	+0.4	+0.58	-2	+13

- * Quad Polled
- * This is a younger calf with tremendous performance. He has the second highest WDA for the optimizer bulls. He is a balanced and thick made bull.
- * His dam is a proven, consistent performing cow with great length and thickness. She is also a good milking female who has a nice udder.



Sept. 2020

461H

Optimizers

070H

PRK Hogan 070H \$3000

Hom Black		Scurred		62.5% SA		#737489
Born	Adj BW	205 Wt	Index	11/12 Wt	WDA	Frame
2/29/20	85 lbs	752 lbs	106	878 lbs	3.42 lbs	6.0

GGT P BLK Heavy Hitter	GGT P Heavy Duty 100J	Dam's Production	
GGT Final Choice 119B	GGT P Harrah 195K	BW	10 @ 89
GGT MS Finality 139Y	SAV Final Answer 0035	WW	9 @ 106
PRK Tonka 298T	GGT Designer 222W	Udder	67
PRK Rosebud 070X	SRS Nokia 9722N		
PRK Rosebud 870U	PRK Virginia 298M		
	SRS Marksman 0059		
	PRK Rosebud 570R		

CED	BW	WW	YW	MWW	Milk	Marb.	REA	Doc.	Stay.
+13.3	-1.9	+67	+94	+54	+20	+0.3	+0.51	+25	+18

- * Triple Polled
- * He is an easy going bull with good weaning performance.
- * His dam is a deep bodied, heavy milking female with a great personality. Nine of her offspring are in this years bull sale.

428H

PRK Hitchcock 428H \$3000

Black		Polled		62.5% SA		#737556
Born	Adj BW	205 Wt	Index	11/12 Wt	WDA	Frame
3/2/20	94 lbs	767 lbs	108	940 lbs	3.69 lbs	6.2

GGT P BLK Heavy Hitter	GGT P Heavy Duty 100J	Dam's Production	
GGT Final Choice 119B	GGT P Harrah 195K	BW	5 @ 93
GGT MS Finality 139Y	SAV Final Answer 0035	WW	5 @ 109
SRS Zeus 0509Z	GGT Designer 222W	Udder	87
PRK Bonnie 428B	SITZ Uncommon		
PRK Molly 828U	PRK Miss Montana 503R		
	DJF Rolen 5002R		
	PRK Molly 254M		

CED	BW	WW	YW	MWW	Milk	Marb.	REA	Doc.	Stay.
+12.0	-0.4	+70	+98	+52	+17	+0.4	+0.61	+13	+18

- * Quad Polled
- * He is a big topped, thick made, powerful bull.
- * His dam is a long bodied, powerful female that has put some top bulls in past sales. Her son in the 2017 sale was a top seller to Paul Tyler.

465H

PRK Headliner 465H \$3500

Black		Polled		62.5% SA		#737491
Born	BW	205 Wt	Index	11/12 Wt	WDA	Frame
3/5/20	95 lbs	741 lbs	105	880 lbs	3.49 lbs	5.8

GGT P BLK Heavy Hitter	GGT P Heavy Duty 100J	Dam's Production	
GGT Final Choice 119B	GGT P Harrah 195K	BW	5 @ 97
GGT MS Finality 139Y	SAV Final Answer 0035	WW	5 @ 99
SRS Spartacus 0670Z	GGT Designer 222W	Udder	99
PRK Roberta 465B	SRS Xtra 0347X		
PRK Roberta 271Z	SRS Seiko 0670S		
	SRS Xpert 0881X		
	PRK Roberta 071X		

CED	BW	WW	YW	MWW	Milk	Marb.	REA	Doc.	Stay.
+13.8	-0.1	+69	+94	+49	+15	+0.3	+0.52	+20	+21

- * Quad Polled
- * A balanced, thick made bull that has caught our eye since birth.
- * His dam is a very attractive and balanced female with lots of thickness and depth.
- * Typical of the Spartacus daughters she has a great udder.

Sept. 2020



465H

880H

PRK Hoodeenie 880H \$3000

Hom Black		Polled		62.5% SA		#737494
Born	Adj BW	205 Wt	Index	11/12 Wt	WDA	Frame
2/17/20	82 lbs	676 lbs	95	834 lbs	3.10 lbs	5.4

GGT P BLK Heavy Hitter	GGT P Heavy Duty 100J	Dam's Production	
GGT Final Choice 119B	GGT P Harrah 195K	BW	1 @ 82
GGT MS Finality 139Y	SAV Final Answer 0035	WW	1 @ 95
MAC Quarterback 58Y	GGT Designer 222W	Udder	99
PRK Rosebud 880F	MAC Quarterback 58Y		
PRK Rosebud 680D	MAC Yellow Rose 156Z		
	SRS Zeus 0509Z		
	PRK Rosebud 280Z		

CED	BW	WW	YW	MWW	Milk	Marb.	REA	Doc.	Stay.
+11.7	-2.7	+62	+85	+45	+14	+0.4	+0.54	+14	+18

- * **Potential Heifer Bull** - Quad Polled
- * A heifer bull with good balance and decent thickness. He comes from a cow family that has a big influence in our herd.
- * GGT Final Choice is an outcross light birth weight bull that we used last year. His calves came very easily out of a large group of heifers.

Sept. 2020



880H

Optimizers

390H PRK Horizon 390H \$3000

Hom Black		Polled	50.0% SA		#737538	
Born	Adj BW	205 Wt	Index	11/12 Wt	WDA	Frame
3/21/20	94 lbs	703 lbs	99	802 lbs	3.40 lbs	5.8

SRS Spartacus 0670Z	SRS Xtra 0347X	Dam's Production	
MRB Gladiator 305B	SRS Seiko 0670S	BW	6 @ 85
MRB Barbie 126Z	MRB Barbwire 260S	WW	6 @ 104
SRS United 0653U	MRB Morgiana 102S	Udder	68
PRK Kimberly 390A	SRS Saint 0218S		
PRK Kimberly 990W	SRS Starr 0653S		
	SRS Recruit 0122R		
	PRK Kimberly 470P		

CED	BW	WW	YW	MWW	Milk	Marb.	REA	Doc.	Stay.
+14.2	+0.6	+59	+83	+48	+18	+0.4	+0.55	+16	+20

* Quad Polled

* This is a young bull that is very clean made and attractive. His full brother sold in the Midland Bull Test Sale last year.

* His dam is a Gold Dam and a heavy milker. She is a long bodied, deep ribbed female and is the Grand Dam to the 790H bull in the sale.

554H PRK Husky 554H \$3500

Black		Polled	50.0% SA		#737540	
Born	Adj BW	205 Wt	Index	11/12 Wt	WDA	Frame
3/3/20	95 lbs	727 lbs	103	878 lbs	3.46 lbs	6.0

SRS Spartacus 0670Z	SRS Xtra 0347X	Dam's Production	
MRB Gladiator 305B	SRS Seiko 0670S	BW	4 @ 91
MRB Barbie 126Z	MRB Barbwire 260S	WW	4 @ 102
PRK Yellowstone 966Y	MRB Morgiana 102S	Udder	88
PRK Susannah 554C	SRS Uprising 0059U		
PRK Susannah 154Y	PRK Recipe 966W		
	SRS United 0653U		
	PRK Susannah 837U		

CED	BW	WW	YW	MWW	Milk	Marb.	REA	Doc.	Stay.
+13.6	+1.1	+67	+96	+50	+16	+0.4	+0.63	+18	+19

* Quad Polled

* This bull has an extremely attractive phenotype with great balance and thickness.

* His dam is a very attractive female with tremendous length and depth of rib.

627H PRK Highlight 627H \$3000

Hom Black		Polled	62.5% SA		#737541	
Born	Adj BW	205 Wt	Index	11/12 Wt	WDA	Frame
3/12/20	85 lbs	686 lbs	97	834 lbs	3.40 lbs	5.6

SRS Spartacus 0670Z	SRS Xtra 0347X	Dam's Production	
MRB Gladiator 305B	SRS Seiko 0670S	BW	3 @ 87
MRB Barbie 126Z	MRB Barbwire 260S	WW	3 @ 98
SRS Benchmark 8105B	MRB Morgiana 102S	Udder	77
PRK Hickory 627D	SRS Zeus 0509Z		
PRK Hickory 418B	SRS Shannon 8105U		
	OPP Saber 847U		
	PRK Hickory 823U		

CED	BW	WW	YW	MWW	Milk	Marb.	REA	Doc.	Stay.
+15.1	+0.1	+68	+96	+48	+15	+0.4	+0.68	+11	+19

* Quad Polled

* This bull is a younger Gladiator son that demonstrates good length and eye appeal. His full brother last year was a top bull in the sale and indexed 118 on feed.

* His dam has great length and as much depth as any cow in our herd.

Sept. 2020



554H

Sept. 2020



627H

March 2020



Full Brother

PRK Genesis 627F- As a Yearling

Optimizers

685H

PRK Hook 685H

\$2500

Black		Polled		50.0% SA		#737542
Born	Adj BW	205 Wt	Index	11/12 Wt	WDA	Frame
3/19/20	95 lbs	757 lbs	107	848 lbs	3.56 lbs	5.9

SRS Spartacus 0670Z	SRS Xtra 0347X	Dam's Production	
MRB Gladiator 305B	SRS Seiko 0670S	BW	3 @ 105
MRB Barbie 126Z	MRB Barbwire 260S		
	MRB Morgiana 102S		
PRK Bonsai 993B	SRS Zeus 0509Z	WW	3 @ 100
PRK Primrose 685D	PRK Honor 993W		
PRK Primrose 188Y	PRK Tonka 298T	Udder	98
	PRK Primrose 983W		

CED	BW	WW	YW	MWW	Milk	Marb.	REA	Doc.	Stay.
+11.1	+1.9	+67	+93	+49	+16	+0.4	+0.63	+13	+19

* Quad Polled

* This bull is a typical Gladiator calf with lots of thickness and width of top over his hip.

* His dam is a good looking female with super length of body.

799H

PRK Hampton 799H

\$2500

Black		Scurred		50.0% SA		#737547
Born	Adj BW	205 Wt	Index	11/12 Wt	WDA	Frame
3/16/20	71 lbs	696 lbs	98	774 lbs	3.21 lbs	5.3

SRS Spartacus 0670Z	SRS Xtra 0347X	Dam's Production	
MRB Gladiator 305B	SRS Seiko 0670S	BW	2 @ 71
MRB Barbie 126Z	MRB Barbwire 260S		
	MRB Morgiana 102S		
DJF Border Line 815A	C-Bar Evolution 107Y	WW	2 @ 97
PRK Kit 799E	STCY Unity 815U		
PRK Kit 199Y	SRS United 0653U	Udder	88
	PRK Kit 999W		

CED	BW	WW	YW	MWW	Milk	Marb.	REA	Doc.	Stay.
+17.8	-2.7	+58	+82	+47	+19	+0.3	+0.55	+19	+16

* **Potential Heifer Bull** - Quad Polled

* A smaller framed bull that is very wide made.

* His young dam is an easy fleshing female with tremendous thickness and depth and a great personality.

1810H

PRK Hashtag 1810H

\$3000

Hom Black		Scurred		50.0% SA		#737554
Born	Adj BW	205 Wt	Index	11/12 Wt	WDA	Frame
2/15/20	82 lbs	704 lbs	99	854 lbs	3.15 lbs	5.0

SRS Xtra 0347X	SRS Uprising 0059U	Dam's Production	
SRS Spartacus 0670Z	SRS Norah 0347N	BW	1 @ 82
SRS Seiko 0670S	SRS Nevada 9378N		
	SRS Priceless 0447P		
SRS Catalyst 0435C	SRS Zeus 0509Z	WW	1 @ 99
PRK Rosebud 1810F	SRS Patchwork 0435P		
PRK Rosebud 570C	SRS Ariat 270A	Udder	99
	PRK Rosebud 070X		

CED	BW	WW	YW	MWW	Milk	Marb.	REA	Doc.	Stay.
+16.1	-1.0	+58	+84	+48	+19	+0.4	+0.42	+18	+20

* **Potential Heifer Bull** - Quad Polled

* This is a bull that has good shape and thickness for a heifer bull.

* His two year old dam is very balanced in her phenotype, with good thickness and length. She also milks well and has a great udder.



Reference Sire

SRS Spartacus 0670Z - Sire & Grandsire

EPD and Catalog Explanations

Below is a chart showing the Salers Breed EPD Averages for all 2018 born cattle.

EPD's	CED	BW	WW	YW	MWW	Milk	Marb	REA	Doc	Stay
Breed Av	+12.2	0.0	+56	+78	+44	+16	+0.4	+0.68	+10	+14

CED (calving ease direct) - Expressed as a % of unassisted births. A bull with a +17.2 would be expected to produce 5% more unassisted births than the average Salers bull when bred to the same cows.

Doc (Docility) - Expressed as a percentage of an animals offspring that would be expected to have mild or restless disposition scores (1 or 2) rather than nervous, flighty, or aggressive(3, 4, or 5). A +20 means an animals offspring would be 10% more likely to have mild disposition scores than the breed average.

Stay (Stayability) - Expressed as a percentage of daughters who will remain in the herd until age 6. Cattle with a stayability of +20 would have 6% more daughters remain in the herd until 6 years old than the average Salers.

Color - Hom. Black (Homozygous Black) were DNA tested and will produce all black offspring when bred to red or black cows. **Black** - Black hided animal possessing one black and one red gene. When they are bred to black females they will produce 75% or higher black offspring. When bred to red cows they will produce 50% black calves.

Adj BW - Adjusted Birth Weight. We took actual birth weights with a digital scale within 24 hours of being born. These were reported and the Association adjusted them for age of dam. Young cows have weight added to their calves birth weight (2 yr olds add 4-5 lbs, 3 yr olds get 2-3 lbs, and 4 year old cows have 1 pound added).

Optimizers



734H PRK Homegrown 734H \$3000

Black		Scurred		50.0% SA		#737496
Born	Adj BW	205 Wt	Index	11/12 Wt	WDA	Frame
2/28/20	94 lbs	708 lbs	100	882 lbs	3.42 lbs	5.9

SRS Bullseye 592B	SOO Line Motive 9016	Dam's Production
PRK Flint 198F	SRS Juliet 0584R	BW 2 @ 100
PRK Virginia 198Y	SRS Wanted 0218W	WW 2 @ 106
DJF Border Line 815A	PRK Virginia 898U	Udder 98
PRK Replica 734E	C-Bar Evolution 107Y	
PRK Replica 547C	STCY Unity 815U	
	SRS Spartacus 0670Z	
	PRK Replica 365A	

CED	BW	WW	YW	MWW	Milk	Marb.	REA	Doc.	Stay.
+13.8	-0.2	+59	+87	+48	+18	+0.3	+0.51	+17	+12

- * Quad Polled
- * This is a PRK Flint son that has a nice pattern and good balance.
- * His dam is another young DJF Border Line female that is showing good performance in an attractive package.

1814H PRK Hightop 1814H \$2500

Black		Polled	50.0% SA		#737497	
Born	Adj BW	205 Wt	Index	11/12 Wt	WDA	Frame
3/2/20	80 lbs	712 lbs	100	812 lbs	3.18 lbs	5.3

SRS Bullseye 592B	SOO Line Motive 9016	Dam's Production
PRK Flint 198F	SRS Juliet 0584R	BW 1 @ 80
PRK Virginia 198Y	SRS Wanted 0218W	WW 1 @ 100
PRK Duracell 252D	PRK Virginia 898U	Udder 99
PRK Montana 1814F	DJF Border Line 815A	
PRK Montana 624D	PRK Robbie 252Z	
	MAC F1 Humboldt 312Z	
	PRK Montana 424B	

CED	BW	WW	YW	MWW	Milk	Marb.	REA	Doc.	Stay.
+16.5	-2.5	+54	+79	+45	+18	+0.4	+0.56	+22	+12

- * **Potential Heifer Bull** - Quad Polled
- * A heifer bull that should produce some very good females.
- * His dam is another high quality two year old PRK Duracell daughter that has an excellent disposition. From the same cow family as the 424H bull.

841H PRK Highway 841H \$2500

Red		Polled		50.0% SA		#737498
Born	Adj BW	205 Wt	Index	11/12 Wt	WDA	Frame
3/10/20	83 lbs	722 lbs	102	820 lbs	3.32 lbs	5.4

SRS Bullseye 592B	SOO Line Motive 9016	Dam's Production
PRK Flint 198F	SRS Juliet 0584R	BW 1 @ 83
PRK Virginia 198Y	SRS Wanted 0218W	WW 1 @ 102
SRS Ariat 270A	PRK Virginia 898U	Udder 89
PRK Malibu 841F	Tumbstone 050	
PRK Malibu 241Z	SRS Footloose 9927J	
	PRK Poplar 292X	
	PRK Malibu 062X	

CED	BW	WW	YW	MWW	Milk	Marb.	REA	Doc.	Stay.
+14.3	-1.7	+52	+76	+44	+18	+0.3	+0.45	+20	+13

- * **Potential Heifer Bull** - Quad Polled
- * His sire, PRK Flint, was used with great success on our heifers. His calves are attractive in their type and have good performance with an average weaning index of 102.
- * PRK Flint's dam is a Gold Dam and has proven herself as a top female in our herd.

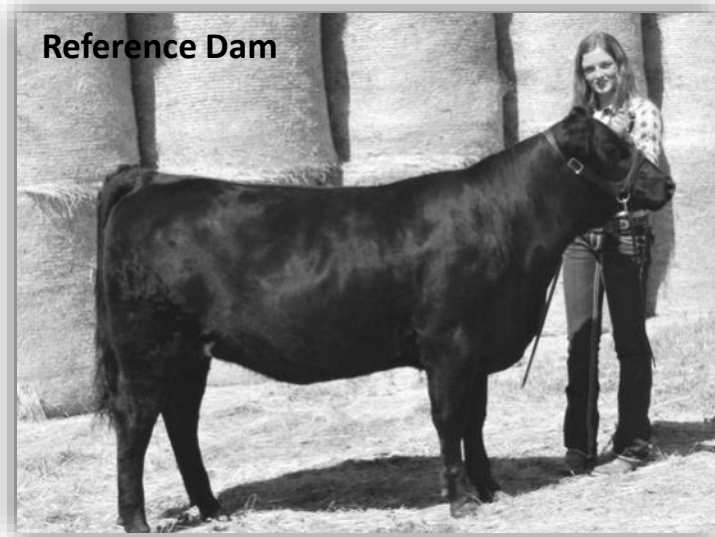
854H PRK Honda 854H \$3000

Black		Polled		50.0% SA		#737499
Born	Adj BW	205 Wt	Index	11/12 Wt	WDA	Frame
3/1/20	78 lbs	734 lbs	104	868 lbs	3.39 lbs	5.6

SRS Bullseye 592B	SOO Line Motive 9016	Dam's Production
PRK Flint 198F	SRS Juliet 0584R	BW 1 @ 78
PRK Virginia 198Y	SRS Wanted 0218W	WW 1 @ 104
SRS Dundee 270D	PRK Virginia 898U	Udder 88
PRK Holly 854F	Connealy Greeley	
PRK Holly 454B	SRS Finicky 0838U	
	SRS United 0653U	
	PRK Holly 264Z	

CED	BW	WW	YW	MWW	Milk	Marb.	REA	Doc.	Stay.
+15.6	-1.9	+54	+74	+46	+19	+0.3	+0.51	+22	+14

- * **Potential Heifer Bull** - Quad Polled
- * A clean made, attractive heifer bull that still has performance due to his length of body.
- * His dam is an attractive young female out of our daughter Deana's 4-H cow.



PRK Holly 854F - As a Bred Heifer

Optimizers

886H PRK Hunter 886H \$3000

Black		Polled		50.0% SA		#737503	
Born	Adj BW	205 Wt	Index	11/12 Wt	WDA	Frame	
3/2/20	86 lbs	769 lbs	109	880 lbs	3.45 lbs	6.2	

SRS Bullseye 592B	SOO Line Motive 9016	Dam's Production	
PRK Flint 198F	SRS Juliet 0584R	BW	1 @ 86
PRK Virginia 198Y	SRS Wanted 0218W		
	PRK Virginia 898U	WW	1 @ 109
MJB Elway 322C	MAC Quarterback 58Y		
PRK Lady 886F	MJB Yellow Rose 156Z	Udder	88
PRK Lady 886U	SRS Policy 9336P		
	PRK Lady 466P		

CED	BW	WW	YW	MWW	Milk	Marb.	REA	Doc.	Stay.
13.2	-0.8	+57	+75	+47	+18	+0.4	+0.49	+16	+14

* Quad Polled

* Hunter is a long bodied calf that has good performance with a weaning index of 109.

* He descends from the same cow family as the 766H and 466H bulls.

680H PRK Hayday 680H \$3500

Hom Black		Polled		50.0% SA		#737525	
Born	Adj BW	205 Wt	Index	11/12 Wt	WDA	Frame	
2/24/20	79 lbs	716 lbs	101	902 lbs	3.44 lbs	5.9	

SRS Dialed In 3160D	SRS Bullseye 592B	Dam's Production	
SRS Forward 0984F	SRS Suzette 3160A	BW	3 @ 82
SRS Seiko 0984W	SRS Recruit 0122R		
	SRS Seiko 0670S	WW	3 @ 103
SRS Zeus 0509Z	SITZ Uncommon		
PRK Rosebud 680D	PRK Miss Montana 503R	Udder	88
PRK Rosebud 280Z	SRS Xpert 0881X		
	PRK Rosebud 070X		

CED	BW	WW	YW	MWW	Milk	Marb.	REA	Doc.	Stay.
+13.8	-2.9	+59	+83	+51	+22	+0.3	+0.53	+16	+17

* **Potential Heifer Bull** - Quad Polled

* This bull possesses good thickness and has good performance for a heifer bull with a balanced EPD profile.

* His dam is a very long, balanced young female that comes from a great cow family. Related to the 880H, 480H, and 070H bulls as well as PRK Fullback.

Sept. 2020



680H

890H PRK Hondoo 890H \$3000

Hom Black		Polled		50.0% SA		#737504	
Born	Adj BW	205 Wt	Index	11/12 Wt	WDA	Frame	
3/13/20	90 lbs	792 lbs	112	836 lbs	3.43 lbs	5.5	

SRS Bullseye 592B	SOO Line Motive 9016	Dam's Production	
PRK Flint 198F	SRS Juliet 0584R	BW	1 @ 90
PRK Virginia 198Y	SRS Wanted 0218W		
	PRK Virginia 898U	WW	1 @ 112
SRS Domino 155D	SRS Banner 0749B		
PRK Honor 890F	SRS Juliet 0829U	Udder	99
PRK Honor 460B	SRS Zip Code 0174Z		
	PRK Honor 181Y		

CED	BW	WW	YW	MWW	Milk	Marb.	REA	Doc.	Stay.
+14.6	-0.9	+61	+86	+49	+18	+0.3	+0.51	+15	+14

* Quad Polled

* Hondoo is a younger bull with good balance and thickness in a moderate frame. He also has great weaning numbers and performance.

* His two year old dam is a very long female with great balance.

Sept. 2020



890H

778H PRK Hershey 778H \$3000

Black		Polled		50.0% SA		#737527	
Born	Adj BW	205 Wt	Index	11/12 Wt	WDA	Frame	
3/10/20	84 lbs	705 lbs	99	830 lbs	3.36 lbs	5.8	

SRS Dialed In 3160D	SRS Bullseye 592B	Dam's Production	
SRS Forward 0984F	SRS Suzette 3160A	BW	2 @ 90
SRS Seiko 0984W	SRS Recruit 0122R		
	SRS Seiko 0670S	WW	2 @ 99
SRS Catalyst 0435C	SRS Zeus 0509Z		
PRK Melanie 778E	SRS Patchwork 0435P	Udder	99
PRK Melanie 478B	SRS Yahtzee 996Y		
	PRK Melanie 278Z		

CED	BW	WW	YW	MWW	Milk	Marb.	REA	Doc.	Stay.
+11.1	-1.2	+59	+85	+48	+19	+0.3	+0.57	+13	+17

* Quad Polled

* His sire, SRS Forward, was our pick of Skinners 2018 bulls for use on our heifers. His first calves came easily and averaged 76 pounds at birth. They have grown well with good depth and thickness and an average weaning index of 102.

Optimizers



793H PRK Highmark 793H \$3000

Hom Black		Polled	50.0% SA		#737528	
Born	Adj BW	205 Wt	Index	11/12 Wt	WDA	Frame
3/4/20	86 lbs	699 lbs	100	850 lbs	3.36 lbs	5.5

SRS Dialed In 3160D	SRS Bullseye 592B	Dam's Production
SRS Forward 0984F	SRS Suzette 3160A	
SRS Seiko 0984W	SRS Recruit 0122R	BW 3 @ 75
PRK Captain 098C	SRS Seiko 0670S	WW 3 @ 99
PRK Honor 793E	SRS Ariat 270A	Udder 99
PRK Honor 993W	PRK Virginia 098X	
	SRS Sequel 0122S	
	PRK Honor 345N	

CED	BW	WW	YW	MWW	Milk	Marb.	REA	Doc.	Stay.
+11.1	-1.1	+56	+80	+49	+21	+0.3	+0.59	+13	+16

* Quad Polled— **Twin**

* Highmark is a moderate, very thick made, squared hipped bull.

* His dam is a good uddered, attractive made, and long bodied young female.

793bH PRK Highwater 793bH \$2500

Black		Polled	50.0% SA		#737529	
Born	Adj BW	205 Wt	Index	11/12 Wt	WDA	Frame
3/4/20	73 lbs	685 lbs	100	824 lbs	3.26 lbs	5.4

SRS Dialed In 3160D	SRS Bullseye 592B	Dam's Production
SRS Forward 0984F	SRS Suzette 3160A	
SRS Seiko 0984W	SRS Recruit 0122R	BW 3 @ 75
PRK Captain 098C	SRS Seiko 0670S	WW 3 @ 99
PRK Honor 793E	SRS Ariat 270A	Udder 99
PRK Honor 993W	PRK Virginia 098X	
	SRS Sequel 0122S	
	PRK Honor 345N	

CED	BW	WW	YW	MWW	Milk	Marb.	REA	Doc.	Stay.
+11.1	-1.1	+56	+80	+49	+21	+0.3	+0.59	+13	+16

* Quad Polled— **Twin**

* He was raised on a foster dam. Highwater is a smaller framed bull with lots of shape and thickness across his hip and down his top.

847H PRK Hudini 847H \$3500

Hom Black		Polled	50.0% SA		#737530	
Born	Adj BW	205 Wt	Index	11/12 Wt	WDA	Frame
3/9/20	83 lbs	806 lbs	114	884 lbs	3.56 lbs	6.2

SRS Dialed In 3160D	SRS Bullseye 592B	Dam's Production
SRS Forward 0984F	SRS Suzette 3160A	
SRS Seiko 0984W	SRS Recruit 0122R	BW 1 @ 83
PRK Duracell 252D	SRS Seiko 0670S	WW 1 @ 114
PRK Topaz 847F	DJF Border Line 815A	Udder 89
PRK Topaz 623D	PRK Robbie 252Z	
	SRS Bullseye 592B	
	PRK Winter 945W	

CED	BW	WW	YW	MWW	Milk	Marb.	REA	Doc.	Stay.
+14.5	-2.1	+61	+90	+52	+22	+0.3	+0.66	+16	+13

* **Potential Heifer Bull**— Quad Polled

* There is a lot of growth performance out of this potential heifer bull. He is a deep bodied and thick made calf.

* His dam is a good milking, long bodied, little larger framed PRK Duracell daughter.

879H PRK Holland 879H \$3500

Black		Polled	50.0% SA		#737488	
Born	Adj BW	205 Wt	Index	11/12 Wt	WDA	Frame
3/13/20	92 lbs	771 lbs	109	872 lbs	3.57 lbs	5.6

SRS Dialed In 3160D	SRS Bullseye 592B	Dam's Production
SRS Forward 0984F	SRS Suzette 3160A	
SRS Seiko 0984W	SRS Recruit 0122R	BW 1 @ 92
SRS Benchmark 8105B	SRS Seiko 0670S	WW 1 @ 109
PRK Kit 879F	SRS Zeus 0509Z	Udder 99
PRK Kit 699D	SRS Shannon 8105U	
	DJF Border Line 815A	
	PRK Kit 999W	

CED	BW	WW	YW	MWW	Milk	Marb.	REA	Doc.	Stay.
+14.1	-1.7	+62	+88	+49	+18	+0.3	+0.54	+20	+14

* Quad Polled

* Holland is a good dispositioned, moderate framed bull, with good thickness and balance.

* His dam is a top end two year old with a moderate frame and comes from another great cow family. From the same cow family as 899H, 799H, 599H, and 499H.



Optimizers

169H PRK Heatseeker 169H \$3000

Red		Scurred		50.0% SA		#737514	
Born	Adj BW	205 Wt	Index	11/12 Wt	WDA	Frame	
3/6/20	97 lbs	704 lbs	99	844 lbs	3.36 lbs	6.1	

DJF Border Line 815A	C-Bar Evolution 107Y	Dam's Production	
PRK Fenway 384F	STCY Unity 815U	BW	8 @ 85
PRK Lass 384F	SRS WDA 270W		
	PRK Lass 184Y	WW	8 @ 99
PRK Tonka 298T	SRS Nokia 9722N		
PRK Rebecca 169Y	PRK Virginia 298M	Udder	78
PRK Rebecca 569R	SRS Legend 9816L		
	PRK 285M		

CED	BW	WW	YW	MWW	Milk	Marb.	REA	Doc.	Stay.
+12.7	+0.6	+55	+82	+46	+18	+0.3	+0.46	+25	+14

* Quad Polled

* Heatseeker is an easy going bull with good length of body and thickness.

* His dam is a very gentle and proven cow, whose last four bulls have all made the sale.

574H PRK Hickory 574H \$3500

Red		Polled		50.0% SA		#737518	
Born	Adj BW	205 Wt	Index	11/12 Wt	WDA	Frame	
2/28/20	90 lbs	749 lbs	106	932 lbs	3.61 lbs	6.1	

DJF Border Line 815A	C-Bar Evolution 107Y	Dam's Production	
PRK Fenway 384F	STCY Unity 815U	BW	4 @ 88
PRK Lass 384F	SRS WDA 270W		
	PRK Lass 184Y	WW	4 @ 103
SRS Yakima 9118YY	SRS Unreal 0151U		
PRK Jasmine 574C	SRS Lace 9118W	Udder	87
PRK Jasmine 194Y	SRS United 0653U		
	PRK Jasmine 894U		

CED	BW	WW	YW	MWW	Milk	Marb.	REA	Doc.	Stay.
+13.9	-0.3	+60	+91	+47	+17	+0.4	+0.51	+20	+13

* Quad Polled

* This is a very clean fronted bull with a lot of thickness in his quarter and good depth of rib.

* Scott showed him at the fair and received Grand Champion Male beef.

* His dam is a very balanced, feminine female whose other son was a top selling bull in our 2018 sale to Two Creek Ranch.

599H PRK Hawkeye 599H \$3500

Red		Polled		50.0% SA		#737519	
Born	Adj BW	205 Wt	Index	11/12 Wt	WDA	Frame	
2/29/20	78 lbs	716 lbs	101	898 lbs	3.49 lbs	5.5	

DJF Border Line 815A	C-Bar Evolution 107Y	Dam's Production	
PRK Fenway 384F	STCY Unity 815U	BW	4 @ 78
PRK Lass 384F	SRS WDA 270W		
	PRK Lass 184Y	WW	4 @ 101
SRS Zeus 0509Z	SITZ Uncommon		
PRK Kit 599C	PRK Miss Montana 503R	Udder	87
PRK Kit 999W	SRS Marksman 0059M		
	PRK Kit 245M		

CED	BW	WW	YW	MWW	Milk	Marb.	REA	Doc.	Stay.
+15.3	-2.2	+56	+82	+47	+19	+0.4	+0.43	+16	+13

* Potential Heifer Bull - Quad Polled

* This calf will make a consistent heifer bull, while still possessing good performance and length. He had a closely related brother sell in last years sale.

* His dam's four calves have all been keepers. She is the grand dam to the 899H bull and is part of a very consistent cow family.

194H PRK Homestretch 194H \$2500

Red		Polled		50.0% SA		#737515	
Born	Adj BW	205 Wt	Index	11/12 Wt	WDA	Frame	
3/5/20	80 lbs	681 lbs	96	810 lbs	3.21 lbs	5.4	

DJF Border Line 815A	C-Bar Evolution 107Y	Dam's Production	
PRK Fenway 384F	STCY Unity 815U	BW	8 @ 79
PRK Lass 384F	SRS WDA 270W		
	PRK Lass 184Y	WW	8 @ 90
SRS United 0653U	SRS Saint 0218S		
PRK Jasmine 194Y	SRS Starr 0653S	Udder	76
PRK Jasmine 894U	OPP Special Duty 626S		
	PRK 392N		

CED	BW	WW	YW	MWW	Milk	Marb.	REA	Doc.	Stay.
+18.0	-3.0	+50	+75	+39	+15	+0.3	+0.47	+17	+13

* Potential Heifer Bull - Quad Polled

* This bull should make a fool proof calving ease heifer bull with lots of length.

* Homestretch has three Gold Dams in his pedigree.

* His dam is a good looking SRS United daughter, who is the grand dam to the 574H bull.



599H

Optimizers

790H PRK Huntley 790H \$3000

Red		Polled		50.0% SA		#737523
Born	Adj BW	205 Wt	Index	11/12 Wt	WDA	Frame
2/29/20	78 lbs	678 lbs	96	822 lbs	3.20 lbs	5.5

DJF Border Line 815A	C-Bar Evolution 107Y	Dam's Production	
PRK Fenway 384F	STCY Unity 815U	BW	2 @ 78
PRK Lass 384F	SRS WDA 270W	WW	2 @ 99
PRK Cash 160C	PRK Lass 184Y	Udder	99
PRK Kimberly 790E	SRS Zeus 0509Z		
PRK Kimberly 390A	PRK Flicka 160Y		
	SRS United 0653U		
	PRK Kimberly 990W		

CED	BW	WW	YW	MWW	Milk	Marb.	REA	Doc.	Stay.
+16.4	-2.0	+55	+84	+46	+18	+0.4	+0.47	+17	+15

- * **Potential Heifer Bull**– Quad Polled
- * Huntley is a lighter birthweight bull with good length and muscle expression.
- * He has four Gold Dams in his pedigree. His dam is a good uddered, long female, and a maternal sister to the 390H bull.

794H PRK Historic 794H \$3000

Red		Polled		50.0% SA		#737524
Born	Adj BW	205 Wt	Index	11/12 Wt	WDA	Frame
2/14/20	90 lbs	668 lbs	94	842 lbs	3.10 lbs	5.4

DJF Border Line 815A	C-Bar Evolution 107Y	Dam's Production	
PRK Fenway 384F	STCY Unity 815U	BW	2 @ 88
PRK Lass 384F	SRS WDA 270W	WW	2 @ 95
PRK Cinch 0778C	PRK Lass 184Y	Udder	99
PRK Holly 794E	SRS Ariat 270A		
PRK Holly 494B	SRS Pony Tail 0778T		
	SRS Zip Code 0174Z		
	PRK Holly 794T		

CED	BW	WW	YW	MWW	Milk	Marb.	REA	Doc.	Stay.
+15.1	-0.6	+57	+90	+44	+15	+0.4	+0.45	+16	+14

- * Quad Polled
- * This is a very well balanced bull with good eye appeal and thickness.
- * His young dam is one of our favorites for phenotype, udder and milk. Her first bull sold in last years sale.

876H PRK Howdy 876H \$3000

Red		Polled		50.0% SA		
Born	BW	205 Wt	Index	11/12 Wt	WDA	Frame
2/16/20	88 lbs	718 lbs	101	866 lbs	3.21 lbs	5.8

DJF Border Line 815A	C-Bar Evolution 107Y	Dam's Production	
PRK Fenway 384F	STCY Unity 815U	BW	1 @ 84
PRK Lass 384F	SRS WDA 270W	WW	1 @ 100
PRK Cash 160C	PRK Lass 184Y	Udder	88
PRK 876F	SRS Zeus 0509Z		
PRK 576C	PRK Flicka 160Y		
	SRS Yakima 9118Y		
	PRK 567R		

CED	BW	WW	YW	MWW	Milk	Marbling	REA

- * Howdy sells as a commercial bull.
- * He is a thick made, balanced bull that has stuck out since birth in the first calf heifer group.
- * PRK Fenway was a top selling bull in our 2018 sale to the White Rock Ranch. He is out of one of our very best cows, and his calves present lots of length and thickness through their quarter.

467H PRK Hayward 467H \$3500

Hom Black		Scurred		50.0% SA		#737418
Born	Adj BW	205 Wt	Index	11/12 Wt	WDA	Frame
3/1/20	87 lbs	725 lbs	102	910 lbs	3.55 lbs	5.9

SRS Ariat 270A	Tombstone 050	Dam's Production	
SRS Cinch 0778C	SRS Footloose 9927J	BW	5 @ 93
SRS Pony Tail 0778T	STS Rembrandt 8300R	WW	5 @ 106
SRS Zip Code 0174Z	SRS Pony Tail 0302N	Udder	66
PRK Glasgow 467B	SRS Uprising 0059U		
PRK Glasgow 167Y	SRS Laurel 0174L		
	PRK Tonka 298T		
	PRK Glasgow 547R		

CED	BW	WW	YW	MWW	Milk	Marb.	REA	Doc.	Stay.
+14.8	-0.7	+58	+86	+45	+16	+0.4	+0.38	+25	+19

- * This bull will put a lot of capacity, thickness, and muscle into a set of calves.
- * His dam is extremely deep bodied and a thick made female that milks very heavy.

155H PRK Highlander 155H \$3000

Red		Scurred		50.0% SA		#738214
Born	Adj BW	205 Wt	Index	11/12 Wt	WDA	Frame
3/10/20	95 lbs	756 lbs	107	874 lbs	3.54 lbs	6.4

SRS Ariat 270A	Tombstone 050	Dam's Production	
SRS Cinch 0778C	SRS Footloose 9927J	BW	8 @ 93
SRS Pony Tail 0778T	STS Rembrandt 8300R	WW	8 @ 103
SRS Wanted 0218W	SRS Pony Tail 0302N	Udder	88
PRK Replica 155Y	S A V 004 Density 4336		
PRK Replica 853U	SRS Juliet 0218M		
	PRK Sonic 711S		
	PRK Replica 575R		

CED	BW	WW	YW	MWW	Milk	Marb.	REA	Doc.	Stay.
13.4	+0.2	+61	+91	+46	+16	+0.4	+0.52	+21	+15

- * Highlander is an attractive made, very long bodied and balanced bull.
- * His dam is an easy fleshing thick made female.
- * SRS Cinch daughters are making good females with excellent udders.



Sept. 2020

467H Pair

Enhancers

424H

PRK Hawk 424H

\$3500

Black		Polled	37.5% SA	37.5% Simm	#737443	
Born	Adj BW	205 Wt	Index	11/12 Wt	WDA	Frame
3/1/20	79 lbs	751 lbs	106	972 lbs	3.80 lbs	6.0

Hook's Black Hawk 50B	Hook's Xavier 14X	Dam's Production
Hook's Eagle 6E	Hook's Yvette 100Y	BW 5 @ 79
Hook's Crystal 1C	GW-WBF Substance 820Y	
SRS United 0653U	Hook's Underestimated 6U	WW 5 @ 101
PRK Montana 424B	SRS Saint 0218S	
PRK Montana 807U	SRS Starr 0653S	Udder 89
	DJF Rolan 5002R	
	PRK Montana Lass 507R	

CED	BW	WW	YW	MWW	Milk	Marb.	REA	Doc.	Stay.
+17.2	-2.5	+76	+118	+57	+19	+0.5	+0.92	+25	+18

* **Potential Heifer Bull**- Quad Polled

* Hawk is a good natured, very deep bodied bull. He is a lighter birthweight bull that still has a lot of performance.
 * He has a full sister in our bred heifer group that we have been impressed with. His dam is a quality female with lots of length, thickness and a good disposition.

615H

PRK Hercules 615H

\$3500

Black		Polled		37.5% SA	37.5% Simm	#737445
Born	Adj BW	205 Wt	Index	11/12 Wt	WDA	Frame
2/26/20	83 lbs	834 lbs	118	1060 lbs	4.08 lbs	6.3

Hook's Black Hawk 50B	Hook's Xavier 14X	Dam's Production
Hook's Eagle 6E	Hook's Yvette 100Y	BW 3 @ 80
Hook's Crystal 1C	GW-WBF Substance 820Y	
MAC F1 Humboldt 312Z	Hook's Underestimated 6U	WW 3 @ 109
PRK Highlight 615D	Werner War Party 2417	
PRK Highlight 409B	MAC BLK Melody 243M	Udder 78
	KEYS Zodiac 20Z	
	PRK Highlight 109Y	

CED	BW	WW	YW	MWW	Milk	Marb.	REA	Doc.	Stay.
+14.7	-2.1	+86	+131	+65	+22	+0.5	+0.98	+24	+17

* **POWERFUL**. Hercules lives up to his name and has been a standout since birth. Weaned in early October at 930 pounds with no creep. Probably the greatest birth to weaning spread bull we have ever raised. Currently the heaviest bull with the highest WDA in the sale.

* His dam is a top end female with a great disposition, excellent length and is heavy milking. Her first bull had a 109 Midland index and sold for \$4750.

419H

PRK Hollywood 419H

\$3500

Hom Black		Polled	37.5% SA	31.3% Simm	#737549	
Born	Adj BW	205 Wt	Index	11/12 Wt	WDA	Frame
2/25/20	84 lbs	721 lbs	102	910 lbs	3.49 lbs	6.0

Hook's Shear Force 38K	Nichols Legacy G151	Dam's Production
SDS Graduate 006X	C&D Tracy	BW 5 @ 90
SDS Queen 814U	ALC Big Eye D09N	
SRS United 0653U	SDS Queen 443P	WW 5 @ 103
PRK Hannah 419B	SRS Saint 0218S	
PRK Hannah 219Z	SRS Starr 0653S	Udder 68
	SRS Ultimate 0730X	
	PRK Hannah 716T	

CED	BW	WW	YW	MWW	Milk	Marb.	REA	Doc.	Stay.
+14.4	-1.4	+66	+98	+55	+22	+0.2	+0.87	+18	+21

* **Quad Polled**

* Hollywood is a deep bodied, balanced bull with a lot of style.

* His dam is a long bodied, balanced female, that our son Spencer showed at the fair for a few years. She is the grand dam to the 729H bull.

533H

PRK Harrison 533H

\$2500

Black		Polled	37.5% SA	37.5% Simm	#737444	
Born	Adj BW	205 Wt	Index	11/12 Wt	WDA	Frame
3/2/20	83 lbs	643 lbs	91	848 lbs	3.33 lbs	5.5

Hook's Black Hawk 50B	Hook's Xavier 14X	Dam's Production
Hook's Eagle 6E	Hook's Yvette 100Y	BW 4 @ 84
Hook's Crystal 1C	GW-WBF Substance 820Y	
SRS Ariat 270A	Hook's Underestimated 6U	WW 4 @ 96
PRK Montana 533C	Tombstone 050	
PRK Montana 213Z	SRS Footloose 9927J	Udder 87
	TSB Outback 132U	
	PRK Montana 813U	

CED	BW	WW	YW	MWW	Milk	Marb.	REA	Doc.	Stay.
+15.0	-1.9	+72	+114	+52	+16	+0.4	+0.87	+15	+17

* **Potential Heifer Bull**- Quad Polled

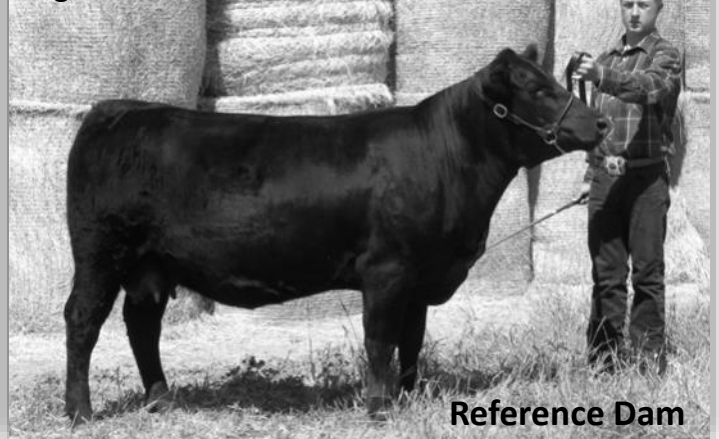
* This is a lighter birthweight bull that still has good shape and is gaining well on feed, typical of the Eagle calves.
 * His dam is a very well made female with lots of thickness and an excellent disposition. She is the grand dam to 830H, and maternal sister to 213H.

Sept. 2020



615H

Aug. 2016



Reference Dam

PRK Hannah 419B - As a 2 Yr. Old

Enhancers

1816H PRK Hoss 1816H \$3500

Hom Black		Scurred	25% SA	31.3% Simm	#737551	
Born	Adj BW	205 Wt	Index	11/12 Wt	WDA	Frame
2/13/20	80 lbs	776 lbs	110	978 lbs	3.58 lbs	5.6

Hook's Shear Force 38K		Nichols Legacy G151		<u>Dam's Production</u>	
SDS	Graduate 006X	C&D Tracy		BW	1 @ 80
	SDS Queen 814U	ALC Big Eye D09N			
		SDS Queen 443P			
PRK	MJB Elway 322C	MAC Quarterback 58Y		WW	1 @ 110
	Lady 1816F	MJB Yellow Rose 156Z			
	PRK Lady 1516C	PRK Ace 081A		Udder	99
		PRK Lady 886U			

CED	BW	WW	YW	MWW	Milk	Marb.	REA	Doc.	Stay.
+15.4	-2.2	+71	+101	+58	+23	+0.2	+0.85	+13	+17

* Potential Heifer Bull

- * Here is an attractive patterned bull that is very deep ribbed. It's hard to find this much performance coupled with a light birth weight especially out of a first calf heifer.
- * His dam is a good milking, excellent uddered, very feminine female tied together in a balanced package.



830H PRK Harley 830H \$3500

Black		Polled		31.3% SA	31.3% Simm	#737553
Born	Adj BW	205 Wt	Index	11/12 Wt	WDA	Frame
2/20/20	85 lbs	827 lbs	117	1012 lbs	3.80 lbs	6.3

Hook's Shear Force 38K	Nichols Legacy G151	<u>Dam's Production</u>	
SDS Graduate 006X	C&D Tracy	BW	1 @ 85
SDS Queen 814U	ALC Big Eye D09N		
	SDS Queen 443P		
DJF Border Line 815A	C-Bar Evolution 107Y	WW	1 @ 117
PRK Montana 830F	STCY Unity 815U		
	SRS Ariat 270A	Udder	77
PRK Montana 533C	PRK Montana 213Z		

CED	BW	WW	YW	MWW	Milk	Marb.	REA	Doc.	Stay.
+15.5	-1.5	+77	+120	+60	+22	+0.1	+0.92	+20	+15

* Quad Polled

- * This is a well put together bull that is hard to find fault with. He is a complete package with impressive numbers and a great phenotype. Harley is a very smooth designed bull for how much power and thickness he has. Second heaviest and second highest WDA bull in the sale.
- * His two year old dam is a heavy milking female backed by some powerful cows.

827H PRK Heston 827H \$3000

Hom Black		Scurred	37.5% SA	31.3% Simm	#737552	
Born	Adj BW	205 Wt	Index	11/12 Wt	WDA	Frame
2/23/20	100 lbs	770 lbs	109	896 lbs	3.41 lbs	6.4

Hook's Shear Force 38K		Nichols Legacy G151		<u>Dam's Production</u>	
SDS	Graduate 006X	C&D Tracy		BW	1 @ 100
	SDS Queen 814U	ALC Big Eye D09N			
PRK	PRK Duracell 252D	SDS Queen 443P		WW	1 @ 109
	Heavenly 827F	DJF Border Line 815A			
	PRK Heavenly 121Y	PRK Robbie 252Z		Udder	99
		SRS Wyatt Earp 965W			
		PRK Heavenly 011K			

CED	BW	WW	YW	MWW	Milk	Marb.	REA	Doc.	Stay.
+11.3	0.0	+69	+106	+57	+23	+0.2	+0.86	+6	+16

* Quad Polled

- * Heston is a deep bodied, bigger framed bull that should add a lot of performance to his calves.
- * His dam is a very long bodied great two year old PRK Duracell daughter with an excellent udder.

Breed Explanations

Optimizer - Term used by the Salers Association to refer to cattle that are crossbred between registered Salers and Angus or Red Angus cattle.

Enhancer - Name we have given to our 3 way cross cattle which are made up of Salers, Simmental, and Angus or Red Angus. We have been using 1/2 to 3/4 Salers X Angus or Red Angus and breeding them to 1/2 to 3/4 Simmental X Angus or Red Angus. We are more concerned with type of cattle than specific percentages.

We have been breeding Salers cattle for 25 years and prior to that were using Simmental in our commercial herd. We have decided to again incorporate some Simmental genetics into some of our cattle. We feel this can increase the level of hybrid vigor and genetic diversity available to our customers. Simmental can contribute performance, depth, thickness, and rib eye area. Salers adds calving ease, calf vigor, dressing percentage, fertility, hardiness and a cleaner more eye appealing phenotype. All three of the breeds are very strong in maternal traits and that continues to be a big focus of our program! We plan to continue to breed Salers cattle as well as Optimizers as we increase and develop our Enhancers.

Sept. 2020



Salers

020H PRK Horsepower 020H \$3500

Black		Polled	PB Salers		#737466	
Born	Adj BW	205 Wt	Index	11/12 Wt	WDA	Frame
3/10/20	96 lbs	773 lbs	109	898 lbs	3.64 lbs	6.4

MAC Centennial 167C	That's Zeppelin 134Z	<u>Dam's Production</u>	
MAC Earthquake 158E	MAC Wynne 258W	BW	10 @ 89
MAC Zinnia 207Z	WHR Wyo Diamond		
SRS Tahoe 0512T	MAC Von 383X	WW	10@ 102
PRK Birch 020X	TSB PLD Marcus 27N		
PRK Birch 630S	SRS Rapture 0512R		
	SRS Nokia 9722N	Udder	68
	SRS Birch 9846H		

CED	BW	WW	YW	MWW	Milk	Marb.	REA	Doc.	Stay.
+12.7	+1.4	+61	+82	+51	+21	+0.4	+0.73	+8	+15

* Quad Polled

* This is a thick made purebred calf, with the highest WDA among the Salers.

* His dam is a moderate framed, heavy milking purebred cow that has raised several top calves.

Sept. 2020



703H PRK High Five 703H \$3000

Black		Scurred	PB Salers		#737476	
Born	Adj BW	205 Wt	Index	11/12 Wt	WDA	Frame
3/8/20	91 lbs	700 lbs	99	802 lbs	3.22 lbs	5.9

MAC Centennial 167C	That's Zeppelin 134Z	<u>Dam's Production</u>	
MAC Earthquake 158E	MAC Wynne 258W	BW	2 @ 89
MAC Zinnia 207Z	WHR Wyo Diamond		
PRK Casino 020C	MAC Von 383X	WW	2 @ 95
PRK Montana 703E	SRS Outback 0809X		
PRK Montana 203Z	PRK Birch 020X	Udder	88
	SRS Wyoming 9939W		
	PRK Montana 003X		

CED	BW	WW	YW	MWW	Milk	Marb.	REA	Doc.	Stay.
+13.3	+0.8	+58	+78	+46	+17	+0.4	+0.78	-2	+16

* Quad Polled

* This calf is an attractive patterned purebred calf.

* MAC Earthquake sires calves with thickness and muscle expression. He sired a son that topped the Macdonald Ranches Production sale last year.

798H PRK Hurricane 798H \$2500

Black		Polled	75.0% SA		#737478	
Born	Adj BW	205 Wt	Index	11/12 Wt	WDA	Frame
3/8/20	92 lbs	669 lbs	94	816 lbs	3.28 lbs	5.8

MAC Centennial 167C	That's Zeppelin 134Z	<u>Dam's Production</u>	
MAC Earthquake 158E	MAC Wynne 258W	BW	2 @ 84
MAC Zinnia 207Z	WHR Wyo Diamond		
	MAC Von 383X		
SRS Cinch 0778C	SRS Ariat 270A	WW	2 @ 97
PRK Ruth 798E	SRS Pony Tail 0778T		
	SRS United 0653U		
PRK Ruth 440B	PRK Ruth 250Z	Udder	99

CED	BW	WW	YW	MWW	Milk	Marb.	REA	Doc.	Stay.
+13.6	+0.4	+58	+84	+46	+18	+0.3	+0.57	+12	+18

* Quad Polled

* Hurricane is a good patterned, attractive and level made bull.

* His dam is a great uddered, very long bodied, and balanced female.

968H PRK Hitachi 968H \$3000

Hom Black		Polled	75.0% SA		#737464	
Born	Adj BW	205 Wt	Index	11/12 Wt	WDA	Frame
3/18/20	96 lbs	723 lbs	102	836 lbs	3.50 lbs	6.4

MAC Centennial 167C	That's Zeppelin 134Z	<u>Dam's Production</u>	
MAC Earthquake 158E	MAC Wynne 258W	BW	10 @ 86
MAC Zinnia 207Z	WHR Wyo Diamond		
	MAC Von 383X		
SRS Sequel 0122S	Connealy Danny Boy	WW	10 @ 99
PRK Pepsi 968W	SRS Aura 0122L		
PRK Pepsi 449P	SRS Legend 9816H	Udder	68
	9979J AR/SM/XX Dam		

CED	BW	WW	YW	MWW	Milk	Marb.	REA	Doc.	Stay.
+10.8	+1.4	+55	+74	+49	+22	+0.4	+0.68	+4	+16

* Here is a younger bull with a little more frame that is clean made and long bodied.

* His dam has stood the test of time and is a good milker and long spined.



Salers

213H PRK Hondo 213H \$3000

Black		Polled	PB Salers		#737505	
Born	Adj BW	205 Wt	Index	11/12 Wt	WDA	Frame
3/7/20	90 lbs	694 lbs	98	8.32 lbs	3.33 lbs	6.5

MAC Decade 140D	MAC Union Station 87U	Dam's Production	
MAC Frontier 184F	MAC Zoe 503Z	BW	7 @ 88
MAC Yorann 258Y	MAC Torrington 139T	WW	7 @ 99
TSB Outback 132U	MAC Royann 100R	Udder	76
PRK Montana 213Z	PCSL Czar 47S		
PRK Montana 813U	TSB PLD Kari 106S		
	SRS Nokia 9722N		
	PRK Miss Montana 313N		

CED	BW	WW	YW	MWW	Milk	Marb.	REA	Doc.	Stay.
+12.5	+0.7	+58	+78	+47	+18	+0.4	+0.93	+10	+18

* Quad Polled

* Hondo is a smooth made, long bodied, stylish purebred Salers bull.

* His dam is a heavy milking, thick, deep bodied purebred cow. All four of her bulls have made the sale, with last years being a highlight. PRK Goldrush sold to Silver Spur Salers for \$5000 in last years sale and indexed 117 on feed.

720H PRK Highpoint 720H \$2500

Red		Polled	87.5% SA		#737513	
Born	Adj BW	205 Wt	Index	11/12 Wt	WDA	Frame
3/10/20	92 lbs	714 lbs	101	800 lbs	3.24 lbs	6.1

MAC Decade 140D	MAC Union Station 87U	Dam's Production	
MAC Frontier 184F	MAC Zoe 503Z	BW	2 @ 93
MAC Yorann 258Y	MAC Torrington 139T	WW	2 @ 103
SRS Tahoe 0512T	MAC Royann 100R	Udder	99
PRK Ruth 720E	TSB PLD Marcus 27U		
PRK Ruth 850U	SRS Rapture 0512R		
	SRS Sequel 0122S		
	PRK Ruth 550R		

CED	BW	WW	YW	MWW	Milk	Marb.	REA	Doc.	Stay.
+11.2	+1.5	+58	+84	+48	+19	+0.4	+0.84	+17	+16

* Quad Polled

* This is a deep ribbed bull with a little bigger frame.

* The dam is a good uddered, longer and bigger framed female. Her bull sold to White Rock Ranch in last years sale.

March 2020



Maternal Brother

PRK Gold Rush 213G - As a Yearling

506H PRK Hiawatha 506H \$3000

Red		Polled	PB Salers		#737414	
Born	Adj BW	205 Wt	Index	11/12 Wt	WDA	Frame
3/3/20	91 lbs	709 lbs	100	858 lbs	3.38 lbs	5.8

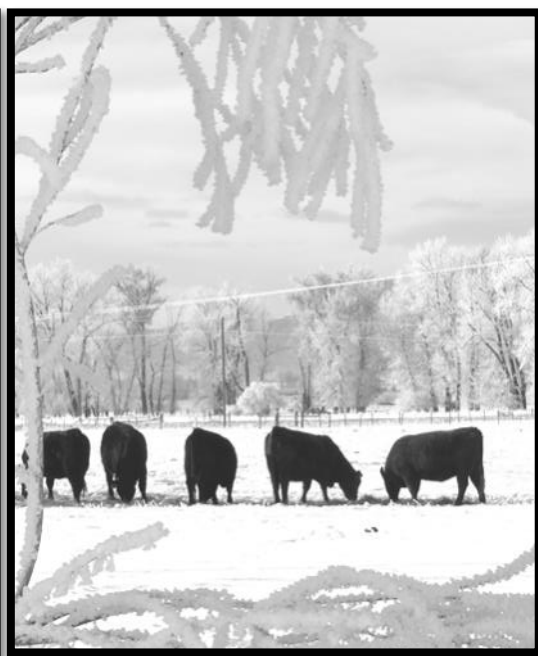
MAC Centurion 240X	D Century	Dam's Production	
MAC Anders 29A	MAC Rissa 379R	BW	4 @ 92
WJM Uriah 249U	MAC Lennox 314L	WW	4 @ 101
SRS Zerox 1058Z	WJM Petra 117P	Udder	98
PRK Hickory 506C	SRS Wyoming 9939J		
PRK Hickory 116Y	SRS Finicky 1058X		
	DJF Whiskey River 9006W		
	PRK Hickory 603S		

CED	BW	WW	YW	MWW	Milk	Marb.	REA	Doc.	Stay.
+14.1	-1.0	+54	+73	+47	+20	+0.4	+0.78	+14	+18

* Quad Polled

* This is a deep bodied bull with good thickness in his quarter.

* His dam possesses lots of capacity and is a good milking female.



Bred Heifers

Most of these heifers were bred, born, and raised here on the ranch. Last fall we did hand pick a few heifers from a couple of our long time commercial customers, so 7 of these heifers are from those genetics. They were all developed together through the winter on long stem grass hay. They have not been fed any concentrates or supplements other than mineral. These heifers sell as commercial heifers even though many of them are registered females and siblings to the bulls selling in this and past sales. They were bred to calving ease sires for both AI and clean-up bulls. You can find most of their service sires listed following the heifer lots or in the Reference Sire section before the bull lots. They were ultra sounded for calving dates on Aug. 10th after a 60 day breeding season. We have sorted the heifers into smaller groups by calving dates. They will sell in the silent auction along with the bulls. The heifers have base prices listed with each group on a per head basis. The bidding will proceed with \$25 per head bid increases until the close of the sale at 2 pm on Dec. 15th. We would ask that you make arrangements to pick up your heifers by the end of the year. A video of the heifer lots will be available on our web site or you may come at any time to view the heifers.



Group A

\$ 1550

Number	Sire	Color	% Saler	Bred To	Due Date	Calf %	WT
135G	MJB Gladiator	Black	5/8	GGT Final Choice	2/14	5/8	1085
146Y	PRK Cash	Black	1/2	PRK Flint	2/16	1/2	1125
269G	MJB Gladiator	Black	1/2	MJB Velocity	2/19	1/2	1165
667G	SRS Dundee	Black	1/2	GGT Final Choice	2/17	1/2	1120
680Y	MJB Gladiator	Black	1/2	GGT Final Choice	2/18	5/8	1170
923G	DJF Daybreak	Black	PB	MAC Anders	2/14	PB	1130



Group B

\$ 1500

Number	Sire	Color	% Saler	Bred To	Due Date	Calf %	WT
490o	Commercial	Black	1/2	SRS Guideline	2/24	1/2	1110
12W	Commercial	Black	1/2	PRK Gallant	3/1	1/2	1110
392Y	SRS Dundee	Black	1/2	PRK Flint	3/9	1/2	1150
075G	PRK Diablo	Black	1/2	SRS Forward	3/11	1/2	1155



Group C

\$ 1500

Number	Sire	Color	% Saler	Bred To	Due Date	Calf %	WT
502Y	SRS Bullseye	Red	3/4	PRK Duracell	2/23	5/8	1070
702Y	PRK Casino	Red	PB	PRK Duracell	3/7	3/4	1020
489o	Commercial	Red	1/2	PRK Flint	3/1	1/2	1015
17W	Commercial	Red	1/2	PRK Flint	2/23	1/2	1070

Bred Heifers



Group D

\$ 1500

Number	Sire	Color	% Saler	Bred To	Due Date	Calf %	WT
184Y	MJB Gladiator	Black	1/2	PRK Flint	3/14	1/2	1090
708G	PRK Casino	Black	PB	SRS Forward	3/15	3/4	1045
329o	Commercial	Black	1/2	SRS Forward	3/16	1/2	1140
468o	Commercial	Black	1/2	SRS Forward	3/16	1/2	1135



Group E

\$ 1500

Number	Sire	Color	% Saler	Bred To	Due Date	Calf %	WT
634G	MJB Gladiator	Black	1/2	SRS Guideline	3/20	1/2	1110
516Y	PRK Casino	Black	PB	PRK Duracell	3/30	3/4	1115
016Y	MAC Earthquake	Black	PB	PRK Duracell	3/31	3/4	1050



Group F

\$ 1450

Number	Sire	Color	% Saler	Bred To	Due Date	Calf %	WT
0886o	Commercial	Red	1/2	PRK Flint	3/22	1/2	1075
330Y	SRS Bullseye	Red	5/8	PRK Duracell	4/1	5/8	1000
506G	PRK Casino	Red	PB	PRK Duracell	4/2	3/4	1030
404Y	SRS Cinch	Red	3/4	SRS Forward	4/9	5/8	1170



Group G

\$ 1500

Number	Sire	Color	% Saler	Bred To	Due Date	Calf %	WT
481G	SRS Dundee	Black	1/2	PRK Flint	4/3	1/2	1090
694Y	SRS Dundee	Black	1/2	SRS Forward	4/3	1/2	1120
540G	PRK Cash	Black	1/2	PRK Flint	4/4	1/2	1140
372Y	PRK Captain	Black	1/2	SRS Forward	4/7	1/2	1170
608G	MAC Earthquake	Black	PB	SRS Forward	4/10	3/4	1060

Bred Heifer Reference Service Sires

PRK Duracell 252D



CED	BW	WW	YW	MWW	Milk	Fat	REA	Marb.	Doc.	Stay.
+17.2	-1.9	+56	+94	+47	+19	-0.03	+0.53	+0.4	+18	+9

SRS Guideline 7126G



CED	BW	WW	YW	MWW	Milk	Fat	REA	Marb.	Doc.	Stay.
+17.3	-2.6	+61	+87	+49	+19	-0.04	+0.53	+0.4	+20	+15

New Parke Ranch Herd Sires

PRK Gametime 160G



CED	BW	WW	YW	MWW	Milk	Fat	REA	Marb.	Doc.	Stay.
+11.9	-0.1	+58	+86	+49	+20	-0.04	+0.42	+0.4	+14	+17

SRS General 4180G



CED	BW	WW	YW	MWW	Milk	Fat	REA	Marb.	Doc.	Stay.
+12.2	+1.3	+71	+105	+54	+18	-0.03	+0.60	+0.4	+5	+15

PRK Gunslinger 538G



CED	BW	WW	YW	MWW	Milk	Fat	REA	Marb.	Doc.	Stay.
+8.2	+1.3	+65	+97	+48	+16	-0.05	+0.68	+0.3	-2	+12

PRK GPS 728G



CED	BW	WW	YW	MWW	Milk	Fat	REA	Marb.	Doc.	Stay.
+17.1	-1.8	+53	+77	+47	+21	-0.04	+0.59	+0.3	+20	+10





Parke Ranch
Eaf & Tiffany Parke
7 Peppergrass Lane
Drummond, MT 59832

Parke Ranch
Maternal Power
Production Sale

December 7th thru 15th, 2020

Drummond, Montana



We Believe In....

Will Represent Honestly....

And Stand Behind Our Cattle!

Eaf & Tiffany Parke Family