

Parke Ranch

2022 Maternal Power Production Sale

SILENT AUCTION FORMAT

December 6th thru 14th, 2022

At the Ranch – Drummond, Montana



Salers, Simmental, and Angus Genetics

120 Head Sell!

66 Bulls

54 Bred heifers

ParkeRanch.com



Eaf & Tiffany Parke Family

7 Peppergrass Lane
Drummond, MT 59832

Home 406-288-3573

Eaf cell 406-240-4167

Joseph cell 406-396-0369

parkeranch@gmail.com

www.ParkeRanch.com

Our family wants to welcome you to our 7th annual Maternal Power Production Sale. We are very appreciative of you taking time to look at our sale offering and are always willing to discuss the cattle or answer any questions you may have. Our goal is to help you find the genetics that will ensure the success of your operation in the decades to come.

This year's sale will consist of 66 head of bulls (from the top 30% of our male calves) and 54 head of bred heifers from our group of home raised replacement females. We have spent decades strictly sorting our cow herd for improved fertility, efficiency, and performance. We continually strive to improve udder quality and disposition in a phenotypically attractive and functional package that will lead to increased longevity, convenience, and profitability.

We continue to offer the sale cattle in a silent auction format where each lot will have an initial base price and be available for bidding throughout the 9-day sale period. We would encourage anyone new to call and discuss the sale process. Our hope is to make it as convenient, flexible, and low pressure as possible. Unfortunately for the first time we have had to increase the base prices of the bulls this year. As you are painfully aware the costs associated with raising, feeding and delivering the cattle has dramatically increased the last couple of years. On a positive note, it was great to see the price for cattle improve significantly this year and have a brighter looking future.

The significant change in our family this year was the marriage of Spencer and Alita last December. Alita graduated from college in April, and they returned to Drummond! Spencer helped on the ranch this summer and is planning to work logging during the winter. Melanie & Monson continue to work on a ranch in the Paradise Valley. Joseph, Aubrey, Jaycie, and Jackson are here on the ranch full time. Deana is a Sophomore at BYU-I and comes home to help between her semesters. Scott continues to grow taller and seems to have more to do all the time. We feel extremely blessed to be surrounded by family and involved in Agriculture which allows us to associate with so many great people! We look forward to visiting with you this December and greatly appreciate your interest and support of our program!

Parke Ranch

2022 Maternal Power Production Sale

Silent Auction December 6 thru 14, 2022 At the Ranch - Drummond, Montana

SALE PROCEDURE

- Cattle will sell in a silent auction format with bidding opening at noon on Tuesday Dec. 6th, 2022.
- Bulls have a starting base price which is listed in the catalog (\$3,000, \$3,400, & \$3,800). Bred Heifers will sell in small groups with a starting base price on a per head basis.
- Bidders may place a bid at base price on any lot without a bid or raise the bid by a minimum of \$100 on any bull or \$25 on any heifer lots with a current bid. Bidding will be open until the sale closes on Wednesday Dec. 14th at 2 pm (Mountain Time).
- Bids can only be placed with Eaf or Joseph via phone, text, email, or in person at any time during the sale period.
- Any lots receiving an increasing bid on Wednesday Dec. 14th may have an oral bid off at the close of the sale. This would involve the last bidder prior to the 14th and any bidders on the 14th, if they wish to continue bidding. Bid offs will be handled in order of price and as quickly as the contending bidders can be reached after 2 pm.
- Any lots without a bid during the 14th are considered sold to the high bidder when the sale closes at 2 pm on the 14th.
- Any lots without a base bid will be available for sale at the base price at the conclusion of the sale on a first come basis.
- We would encourage bidding early in the sale period to reduce the number of bid offs and to allow you to move to other lots.
- A spreadsheet on our website at www.parkeranch.com will be updated frequently with current bids or you may request update notifications if your bidding status changes.

SALE TERMS AND DETAILS

- Females need to be picked up by the buyers by Dec. 31st.
- 1/2 of purchase price is due at sales conclusion with the balance due at delivery.
- Bulls will be fed free of charge and at our risk until delivery, beginning around March 20th.
- Bulls will be delivered free of charge up to 500 miles with any additional mileage at cost.
- All bulls are guaranteed for disposition, structural soundness, and fertility for the first breeding season.
- We will notify you as soon as possible if any bulls are injured in our care or do not pass the semen test. You may select a replacement bull if one is available, future credit, or receive a refund of your initial payment.
- Parke Ranch is retaining 1/3 semen interest on all sale bulls and will collect semen before delivery, at our cost, on any we desire to use in our AI program. You have full salvage value.
- A volume discount of 5% will be given on any purchase of 5 or more bulls.

BULL HISTORY & DEVELOPMENT

- Bulls had actual birthweights taken with a scale at birth.
- They have been raised without creep. Just milk and grass.
- Sale bulls are from the top 30% of our male calves. They were sorted many times based on dam quality, birthweight, disposition, confirmation, performance, and soundness.
- Bulls were weaned on October 4th and are being fed free choice long stem mixed hay and 6 lbs of bull challenger pellets.
- They will be fed for a 2.8 lbs/day gain to grow them out sufficiently while ensuring their soundness and longevity.
- Bulls will be semen tested and vaccinated in March and be ready for turn out when delivered.
- Fall vaccinations included: Vision 8, Pyramid 5, Autogenous Type A, Autogenous Respiratory, Multi-Min, and Footrot. Spring vaccinations: Vision 8, Pyramid 5, Reprostar VL5 HB, & Footrot.

CATALOG DETAILS

- All double black bulls were DNA tested for coat color and those found to be homozygous black are designated in the catalog.
- Lot base prices are found in the upper right hand corner.
- Dams average on calves birthweights and weaning indexes are listed along with her udder score (the first digit represents her udder suspension and the second digit is teat size, with 9 being the best and 1 the worst).
- The listed EPDs are from the American Salers Association.
- Potential Heifer bulls are ranked. (4★ being the most reliable)

CATTLE INSPECTION

- Cattle are available for inspection at any time now or during the sale period. If you desire to call ahead we can make accommodations to improve your viewing experience.
- Have lunch on us. Plan a little extra time when you come to look at cattle and have a famous Parkers Hamburger on us at the restaurant in Drummond (they are closed Sun. & Mon.).
- Exit interstate 90 at Drummond and head south on Hwy #1. After 2.6 miles turn east on Mullan Road and then travel 1.5 miles and our ranch is on the left.

ADDITIONAL INFORMATION

- A link to a video of the individual bulls and heifer groups will be up on our website before Dec. 1st.
- We will have updated weights and scrotal measurements on all sale bulls at the start of the sale. These will be available on our website or when you come to view the cattle.

We Believe In . . . Will Represent Honestly . . . And Stand Behind Our Cattle!

PRK FLINT 198F



P Reference Sire PRK FLINT 198F

Black Polled 1/2 SA 3/8 AN 1/8 AR reg: 724634

SOO LINE MOTIVE 9016
SRS BULLSEYE 592B
 SRS JULIET 0584R

SRS WANTED 0218W
PRK VIRGINIA 198Y
 PRK VIRGINIA 898U

HF KODIAK 5R
 TLA BEAUTY 5R
 MAC LANSING 302L
 SRS JULIET 9609F
 S A V 004 DENSITY 4336
 SRS JULIET 0218M
 SRS NOKIA 9722N
 PRK VIRGINIA 298M

CED	BW	WW	YW	MWW	Milk	Marb	REA	Doc	Stay
+18.0	-4.5	+46	+61	+35	+13	+0.1	+0.44	+25	+15

PRK DURACELL 252D



P Reference Sire PRK DURACELL 252D

Black Hom Polled 1/2 SA 3/8 AR 1/8 AN reg: 709879

C-BAR EVOLUTION 107Y
DJF BORDER LINE 815A
 STCY UNITY 815U

SRS WDA 270W
PRK ROBBIE 252Z
 PRK ROBBIE 852U

TR COLT 45 UT806
 LGS ABBY 689S
 S NEBRASKA 330N
 STCY NATALIE 315N
 S A V 004 DENSITY 4336
 SRS FOOTLOOSE 9927J
 SRS SEQUEL 0122S
 PRK ROBBIE 562R

CED	BW	WW	YW	MWW	Milk	Marb	REA	Doc	Stay
+16.1	-2.6	+59	+98	+41	+12	+0.1	+0.46	+18	+13

SRS GENERAL 4180G



P Reference Sire SRS GENERAL 4180G

Hom Black Hom Polled 1/2 SA 1/2 AN reg: 732124

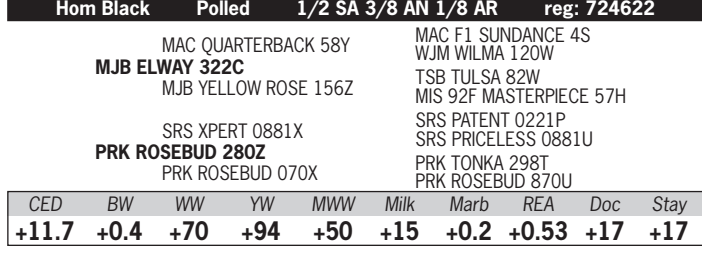
CONNEALY GREELEY
SRS DYNASTY 667D
 SRS FINICKY 0838U

SRS GUNSLINGER 605Z
SRS JULIET 4180B
 SRS JULIET 0218M

CONNEALY CONFIDENCE 0100
 PRECIOUS OF CONANGA 0484
 CRO SURVEY 615S
 SRS FINICKY 9809H
 TOMBSTONE 050
 BASIN JOYCE S474
 SRS FOCUS 9403F
 SRS JULIET 9505E

CED	BW	WW	YW	MWW	Milk	Marb	REA	Doc	Stay
+11.4	+1.5	+77	+109	+52	+14	+0.1	+0.57	-7	+18

P Reference Sire PRK FULLBACK 280F



P Reference Sire PRK GOLD RUSH 213G

Red Polled Purebred Salers reg: 730932

MAC CENTURION 240X
MAC ANDERS 29A
 WJM URIAH 249U

TSB OUTBACK 132U
PRK MONTANA 213Z
 PRK MONTANA 813U

D CENTURY
 MAC RISSA 379R
 MAC LENNOX 314L
 WJM PETRA 117P9H
 PCSL CZAR 47S
 TSB PLD KARI 106S
 SRS NOKIA 9722N
 PRK MISS MONTANA 313N

CED	BW	WW	YW	MWW	Milk	Marb	REA	Doc	Stay
+16.6	-2.8	+42	+64	+40	+19	-0.2	+0.78	+14	+20

Hom Black Polled 1/2 SA 3/8 AN 1/8 AR reg: 724622

MAC QUARTERBACK 58Y
MJB ELWAY 322C
 MJB YELLOW ROSE 156Z

SRS XPERT 0881X
PRK ROSEBUD 280Z
 PRK ROSEBUD 070X

MAC F1 SUNDANCE 4S
 WJM WILMA 120W
 TSB TULSA 82W
 MIS 92F MASTERPIECE 57H
 SRS PATENT 0221P
 SRS PRICELESS 0881U
 PRK TONKA 298T
 PRK ROSEBUD 870U

CED	BW	WW	YW	MWW	Milk	Marb	REA	Doc	Stay
+11.7	+0.4	+70	+94	+50	+15	+0.2	+0.53	+17	+17

Reference Sire GW TRIPLE CROWN 018C

Hom Black		Hom Polled		5/8 SM 3/8 AN		reg: 2954741			
GW PREMIUM BEEF 021TS		G A R US PREMIUM BEEF		GW MISS LUCKY CHARM 410P					
J BAR J NIGHTRIDE 225Z		GW MISS LUCKY CHARM 410P		GW LUCKY BOY 252U					
J BAR J MISS ND 793X		793T		G A R PREDESTINED					
GW PREDESTINED 701T		GW MISS LUCKY STRIKE 363		GW PREMIUM BEEF 021TS					
GW MISS GPRD 359A		GW MISS LUCKY STRIKE 363		GW PREMIUM BEEF 021TS					
GW MISS PREM BEEF 240Y		GW MISS EMBLAZON 751U		GW MISS EMBLAZON 751U					
CED	BW	WW	YW	MWW	Milk	Marb	REA	Doc	Stay
+14.7	-1.9	+90.8	+150	+66.1	+20.7	+0.77	+1.15	+22.3	+19.3



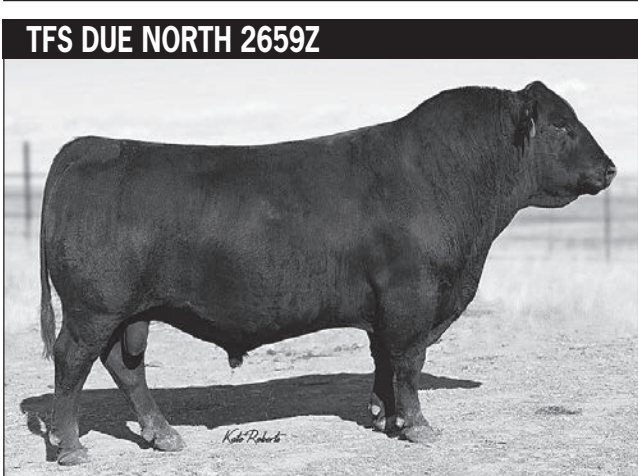
Reference Sire GIBBS 6155D SUPER DUTY

Hom Black		Hom Polled		1/2 SM 1/2 AN		reg: 3256504			
WERNER WAR PARTY 2417S		CONNEALY ONWARD		BAAR USA LADY JAYE 489					
R B TOUR OF DUTY 177		BAAR USA LADY JAYE 489		VERMILION DATELINE 7078					
B A LADY 6807 305		G D LADY HI FLYER 302		SSF BLK MIDLAND R431					
SSF BLK MIDLAND T525T		SSF BLACK ANN N211		BF N315 MARATHON					
SSF BLK LOUISE Y534		SSF BLACK ANN N211		SSF BLACK LOUISE L331					
SSF BLK LOUISE S824		SSF BLACK LOUISE L331		SSF BLACK LOUISE L331					
CED	BW	WW	YW	MWW	Milk	Marb	REA	Doc	Stay
+17.1	-2.2	+74.5	+117.1	+64.5	+27.3	+0.33	+0.57	+15.5	+18.6



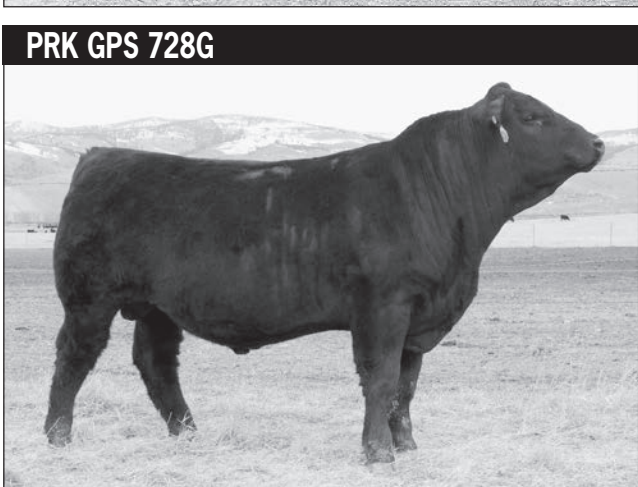
Reference Sire TFS DUE NORTH 2659Z

Hom Black		Hom Polled		5/8 SM 3/8 AN		reg: 2654477			
NICHOLS LEGACY G151		NICHOLS BLK DESTINY D12		NICHOLS DEBRA D81					
HOOKS SHEAR FORCE 38K		NICHOLS DEBRA D81		CIRCLE S LEACHMAN 600U					
C&D TRACY		BETSY		S A F FOCUS OF E R					
MYTTY IN FOCUS		S A F FOCUS OF E R		MYTTY COUNTESS 906					
TFS 1/4 SM 3/4 AN 8419T		MYTTY COUNTESS 906		BOYD BEEF MAKER 3069					
TFS GOOD AS GOLD 0056K 6		BOYD BEEF MAKER 3069		BONINA GOLDENGLow 0056K					
CED	BW	WW	YW	MWW	Milk	Marb	REA	Doc	Stay
+14.7	-1.4	+75.2	+117.2	+59.6	+22.1	+0.53	+0.61	+18.6	+15.6



Reference Sire PRK GPS 728G

Hom Black		Hom Polled		1/2 AN 3/8 SA 1/8 SM		reg: 730893			
CONNEALY CONFIDENCE 0100		CONNEALY TOBIN		BECKA GALA OF CONANGA 8281					
MSR TENACITY 3733A		CONNEALY TOBIN		BECKA GALA OF CONANGA 8281					
MSR 1206Y OF 9325W SBET		DIKEMANS SURE BET		MSR 9325W OF 2094 VOY					
SRS BULLSEYE 592B		SOO LINE MOTIVE 9016		SRS JULIET 0584R					
PRK HICKORY 728E		SRS JULIET 0584R		OPP SABER 847U					
PRK HICKORY 418B		OPP SABER 847U		PRK HICKORY 823U					
CED	BW	WW	YW	MWW	Milk	Marb	REA	Doc	Stay
+14.4	-0.4	+65	+92	+55	+22	+0.1	+0.57	+8	+15



P 1 PRK KINETIC 269K \$3,400

Hom Black		Polled		1/2 SA 1/2 AN		reg: P751163	
Born	BW	205 Wt	Index	11/5 Wt	WDA	Frame	
2/16/2022	82	714	100	860	3.28	5.4	

CONNEALY COMRADE 1385 CONNEALY CONSENSUS 7229
 HAPPY GEE OF CONANGA 919
MAC F1 ENDURO 43E
 MAC CARINA 176C
 S NEBRASKA 330N
 MAC WILLOW 134W
 SRS XTRA 0347X
PRK WENDY 269Z
 PRK WENDY 059X
 SRS UPRISING 0059U
 SRS NORAH 0347N
 SRS TAHOE 0512T
 LBR DAYTONAS FOCUS S609

Dam's Production	
BW	9 @ 84
WW	9 @ 103
Udder	5-7

CED	BW	WW	YW	MWW	Milk	Marb	REA	Doc	Stay
+16.9	-2.2	+61	+90	+52	+21	+0.2	+0.51	+10	+18

★★★ Potential Heifer Bull • Quad Polled

- Heavy milking, proven female with several daughters in the herd and Gold Dam status.
- Her only other son, a full brother to Kinetic, was a top indexing and selling bull in Midland Bull Test.



P 2 PRK KRYPTO 287K \$3,800

Hom Black		Polled		1/2 SA 1/2 AN		reg: P751164	
Born	BW	205 Wt	Index	11/5 Wt	WDA	Frame	
3/17/2022	105	863	121	944	4.05	6.7	

CONNEALY COMRADE 1385 CONNEALY CONSENSUS 7229
 HAPPY GEE OF CONANGA 919
MAC F1 ENDURO 43E
 MAC CARINA 176C
 S NEBRASKA 330N
 MAC WILLOW 134W
 SRS WDA 270W
PRK GINA 287Z
 PRK GINA 087X
 S A V 004 DENSITY 4336
 SRS FOOTLOOSE 9927J
 SRS UPRISING 0059U
 PRK GINA 857U

Dam's Production	
BW	9 @ 92
WW	8 @ 108
Udder	5-8

CED	BW	WW	YW	MWW	Milk	Marb	REA	Doc	Stay
+11.5	+1.1	+75	+112	+57	+20	+0.2	+0.67	+7	+20

Quad Polled

- Krypto is very powerful from every angle with over a 4.0 lbs WDA.
- Dam is a very thick, deep bodied, and moderate female who has reached Gold Dam status.
- She is one of our top indexing proven females.
- Her other 2 bulls have been top end bulls in our sale.

Maternal Brother to Lot 2



PRK Heavy Duty 287H • March, 2021



P 3 PRK KIT KAT 836K \$3,400

Hom Black		Polled		1/2 SA 1/2 AN		reg: P751172	
Born	BW	205 Wt	Index	11/5 Wt	WDA	Frame	
2/27/2022	82	670	94	806	3.21	5.1	

CONNEALY COMRADE 1385 CONNEALY CONSENSUS 7229
 HAPPY GEE OF CONANGA 919
MAC F1 ENDURO 43E
 MAC CARINA 176C
 S NEBRASKA 330N
 MAC WILLOW 134W
 SRS BULLSEYE 592B
PRK GINGER 836F
 PRK GINGER 141Y
 SOO LINE MOTIVE 9016
 SRS JULIET 0584R
 SRS UNITED 0653U
 PRK GINGER 242M

Dam's Production	
BW	3 @ 79
WW	3 @ 91
Udder	9-8

CED	BW	WW	YW	MWW	Milk	Marb	REA	Doc	Stay
+13.9	-0.7	+61	+92	+45	+15	+0.2	+0.58	+15	+19

★★ Potential Heifer Bull

- A cleanly designed bull with lots of style and an attractive profile.
- His dam is a very long spined and thick female with tremendous balance.
- Her yearling daughter was shown by Scott and received a purple ribbon this year at the Tri-County Fair.

Maternal Sister to Lot 3



PRK Ginger 126J • August, 2022



Dam of Lot 4



PRK Virginia 998G • March, 2022



LOT 6

P 4 PRK KIOSK 998K \$3,400

Hom Black		Scurred		1/2 SA 1/2 AN		reg: S751176	
Born	BW	205 Wt	Index	11/5 Wt	WDA	Frame	
2/22/2022	75	679	95	816	3.19	4.8	

CONNEALY COMRADE 1385 CONNEALY CONSENSUS 7229
 HAPPY GEE OF CONANGA 919
MAC F1 ENDURO 43E
 MAC CARINA 176C
 MJB GLADIATOR 305B
PRK VIRGINIA 998G
 PRK VIRGINIA 198Y

S NEBRASKA 330N
 MAC WILLOW 134W
 SRS SPARTACUS 0670Z
 MJB BARBIE 126Z
 SRS WANTED 0218W
 PRK VIRGINIA 898U

Dam's Production	
BW	2 @ 78
WW	2 @ 96
Udder	9-9

CED	BW	WW	YW	MWW	Milk	Marb	REA	Doc	Stay
+16.8	-2.4	+61	+86	+48	+18	+0.2	+0.54	+15	+19

- ★★★★ Potential Heifer Bull • Quad Polled
- A smaller framed bull that will work great on heifers and comes from a super cow family.
 - His dam is a gorgeous, great uddered young female.
 - She is a maternal sister to our proven Herd Sire, PRK Flint, who is a tremendous heifer bull.

P 5 PRK KIWI 0104K \$3,000

Hom Black		Polled		1/2 SA 3/8 AN 1/8 AR		reg: P751692	
Born	BW	205 Wt	Index	11/5 Wt	WDA	Frame	
2/21/2022	86	740	103	796	3.10	5.0	

SRS ELEMENT 4154E
SRS GUIDELINE 7126G
 SRS LACE 7126E
 PRK DURACELL 252D
PRK CATHLEEN 0104H
 PRK CATHLEEN 064X

SRS BENCHMARK 8105B
 SRS MORGAN 4154B
 SRS BOTTOM LINE 978B
 SRS LACE 3179A
 DJF BORDER LINE 815A
 PRK ROBBIE 252Z
 SRS SEQUEL 0122S
 PRK CATHLEEN 664S

Dam's Production	
BW	1 @ 86
WW	1 @ 103
Udder	8-9

CED	BW	WW	YW	MWW	Milk	Marb	REA	Doc	Stay
+12.9	-2.3	+58	+87	+51	+23	+0.1	+0.45	+18	+14

- Quad Polled
- Great deal of volume and capacity in this bull.
 - Dam is a solid young female with a good disposition.

P 6 PRK KEYNOTE 0112K \$3,800

Red		Polled		1/2 SA 1/2 AN		reg: P751239	
Born	BW	205 Wt	Index	11/5 Wt	WDA	Frame	
2/17/2022	83	706	99	816	3.13	4.7	

SRS ELEMENT 4154E
SRS GUIDELINE 7126G
 SRS LACE 7126E
 SRS DUNDEE 270D
PRK SUZANNE 0112H
 PRK SUZANNE 1712E

SRS BENCHMARK 8105B
 SRS MORGAN 4154B
 SRS BOTTOM LINE 978B
 SRS LACE 3179A
 CONNEALY GREELEY
 SRS FINICKY 0838U
 SRS BENCHMARK 8105B
 PRK SUZANNE 572C

Dam's Production	
BW	1 @ 83
WW	1 @ 99
Udder	9-8

CED	BW	WW	YW	MWW	Milk	Marb	REA	Doc	Stay
+8.4	-1.2	+61	+89	+49	+19	+0.1	+0.46	+22	+15

- Quad Polled
- Another Guideline son with super depth and rib shape along with thickness.
 - His mother is a beautiful young female with lots of length and an attractive design.

Value to be Found

We would encourage you to look through all the bulls in the sale offering as often there is great quality and value to be found in the lower price groups. This year we again feel that the bulls are very close in quality from the bottom group to many in the higher price groups. We had to make the price group decisions more than a month in advance of the sale and find that some can change a lot in that amount of time. Your own priorities, preferences, and objectives may also differ from our opinion and judgment. We feel that all the offered bulls have tremendous value at their base prices. When you consider the calf value of the offspring they will sire, the longevity they possess through genetics and development, and their salvage value they offer a great opportunity and investment.





P 9 PRK KODEE 996K \$3,000

Black	Polled	1/2 SA 1/2 AN		reg: P751262		
Born	BW	205 Wt	Index	11/5 Wt	WDA	Frame
2/24/2022	95	701	98	816	3.21	5.3

SRS ELEMENT 4154E
SRS GUIDELINE 7126G
 SRS LACE 7126E

SRS BENCHMARK 8105B
 SRS MORGAN 4154B
 SRS BOTTOM LINE 978B
 SRS LACE 3179A

SRS DUNDEE 270D
PRK LADY 996G
 PRK LADY 666D

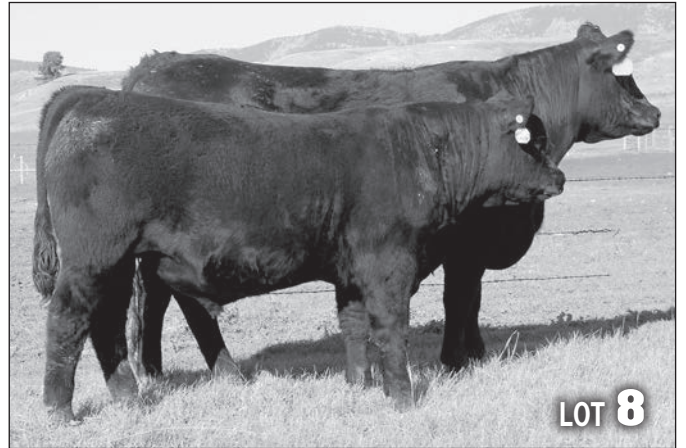
SRS BENCHMARK 8105B
 SRS MORGAN 4154B
 SRS BOTTOM LINE 978B
 SRS LACE 3179A
 CONNEALY GREELEY
 SRS FINICKY 0838U
 SRS SPARTACUS 0670Z
 PRK LADY 466B

Dam's Production	
BW	2 @ 87
WW	2 @ 97
Udder	8-8

CED	BW	WW	YW	MWW	Milk	Marb	REA	Doc	Stay
+9.5	-0.1	+60	+85	+49	+20	+0.1	+0.43	+22	+17

Quad Polled

- This is a moderate, balanced, and correct made bull.
- Dam is from the impactful Lady cow family which possesses great longevity.
- She is a maternal sister to the dam of lot #14.



P 7 PRK KARMA 0148K \$3,800

Black	Polled	1/2 SA 1/2 AN		reg: P751245		
Born	BW	205 Wt	Index	11/5 Wt	WDA	Frame
2/13/2022	96	773	108	892	3.37	5.6

SRS ELEMENT 4154E
SRS GUIDELINE 7126G
 SRS LACE 7126E

SRS CINCH 0778C
PRK JEWEL 0148H
 PRK JEWEL 748E

SRS BENCHMARK 8105B
 SRS MORGAN 4154B
 SRS BOTTOM LINE 978B
 SRS LACE 3179A

SRS ARIAT 270A
 SRS PONY TAIL 0778T
 PRK ACE 081A
 PRK JEWEL 486B

Dam's Production	
BW	1 @ 96
WW	1 @ 108
Udder	8-9

CED	BW	WW	YW	MWW	Milk	Marb	REA	Doc	Stay
+9	-0.6	+64	+96	+54	+22	+0.1	+0.49	+20	+16

Quad Polled

- A very powerful and high performing bull.
- His dam is a good milking and uddered, deep bodied young cow.
- Guideline calves have lots of thickness down their top and into their quarter.

P 8 PRK KLASSIC 095K \$3,800

Hom Black	Polled	1/2 SA 1/2 AN		reg: P751251		
Born	BW	205 Wt	Index	11/5 Wt	WDA	Frame
2/5/2022	79	734	103	868	3.18	5.5

SRS ELEMENT 4154E
SRS GUIDELINE 7126G
 SRS LACE 7126E

SRS UNITED 0653U
PRK GINA 095H
 PRK GINA 895F

SRS BENCHMARK 8105B
 SRS MORGAN 4154B
 SRS BOTTOM LINE 978B
 SRS LACE 3179A

SRS SAINT 0218S
 SRS STARR 0653S
 SRS ARIAT 270A
 PRK CINDERELLA 595C

Dam's Production	
BW	1 @ 79
WW	1 @ 103
Udder	7-7

CED	BW	WW	YW	MWW	Milk	Marb	REA	Doc	Stay
+13.2	-2.6	+58	+85	+50	+21	+0.1	+0.45	+20	+17

***** Potential Heifer Bull • Quad Polled**

- Klassic is one of our favorites and a promising herd sire with a great disposition.
- He has lots of body length in addition to the traditional thickness of Guideline sons.
- His 2 year old mother is a very long bodied and heavy milking female.



P 10 PRK KENTUCKY 266K \$3,400

Black	Polled	1/2 SA 3/8 AN 1/8 AR			reg: P751154	
Born	BW	205 Wt	Index	11/5 Wt	WDA	Frame
3/5/2022	90	725	101	844	3.44	5.9

KEYS RETRIBUTION 18B
MJB VELOCITY 414E
 MJB MARY 134C

KEYS DIRECT FIRE 18Y
 MISS KEY KRISTIN 57Y
 MAC QUARTERBACK 58Y
 MJB YELLOW ROSE 138Z

Dam's Production	
BW	9 @ 90
WW	9 @ 102
Udder	7-7

SRS XTRA 0347X
PRK 266Z
 PRK SAVANNA 646S

SRS UPRISING 0059U
 SRS NORAH 0347N
 SRS FOCUS 9403F
 9876H

CED	BW	WW	YW	MWW	Milk	Marb	REA	Doc	Stay
+12.1	-0.6	+57	+83	+43	+15	+0.2	+0.52	+12	+17

Quad Polled

- A solid, long bodied bull that takes after his very long spined dam.
- She is a deep, easy fleshing female who has several daughters in the herd.



P 11 PRK KNIFE 372K \$3,800

Hom Black	Polled	1/2 SA 3/8 AN 1/8 AR			reg: P751155	
Born	BW	205 Wt	Index	11/5 Wt	WDA	Frame
2/24/2022	89	705	99	866	3.41	6.3

KEYS RETRIBUTION 18B
MJB VELOCITY 414E
 MJB MARY 134C

KEYS DIRECT FIRE 18Y
 MISS KEY KRISTIN 57Y
 MAC QUARTERBACK 58Y
 MJB YELLOW ROSE 138Z

Dam's Production	
BW	8 @ 83
WW	7 @ 99
Udder	7-7

SRS UNITED 0653U
PRK SUSANNAH 372A
 PRK SUSANNAH 172Y

SRS SAINT 0218S
 SRS STARR 0653S
 SRS UNREAL 0151U
 PRK SUSANNAH 887U

CED	BW	WW	YW	MWW	Milk	Marb	REA	Doc	Stay
+14.7	-2.3	+55	+80	+42	+15	+0.3	+0.45	+14	+20

★ Potential Heifer Bull • Quad Polled

- Here is a thick topped bull with a moderate birth weight.
- His deep bodied dam is a heavy milking female who continues to do a great job.
- Her 2020 son was a top selling heifer bull in our production sale.

P 12 PRK KNOX 634K \$3,800

Hom Black	Polled	1/2 SA 1/2 AN			reg: P751156	
Born	BW	205 Wt	Index	11/5 Wt	WDA	Frame
2/22/2022	76	728	102	916	3.58	5.5

KEYS RETRIBUTION 18B
MJB VELOCITY 414E
 MJB MARY 134C

KEYS DIRECT FIRE 18Y
 MISS KEY KRISTIN 57Y
 MAC QUARTERBACK 58Y
 MJB YELLOW ROSE 138Z

Dam's Production	
BW	5 @ 81
WW	5 @ 100
Udder	9-9

SRS ARIAT 270A
PRK FLICKA 634D
 PRK FLICKA 343A

TOMBSTONE 050
 SRS FOOTLOOSE 9927J
 DJF XCLUSIVE 498X
 PRK FLICKA 839U

CED	BW	WW	YW	MWW	Milk	Marb	REA	Doc	Stay
+14.2	-2.9	+57	+85	+43	+15	+0.2	+0.49	+9	+18

★★ Potential Heifer Bull • Quad Polled

- Knox is definitely a bull with very good spread from birth to weaning and a top WDA figure.
- He is extremely thick with a powerful hip and quarter.
- His mother milks great and has a super udder and teat structure.

OPTIMIZER BULLS



PRK Hunk 372H • September, 2020

P 13 PRK KINGPIN 847K \$3,400

Hom Black	Polled	1/2 SA 3/8 AN 1/8 AR			reg: P751158	
Born	BW	205 Wt	Index	11/5 Wt	WDA	Frame
3/6/2022	88	751	105	862	3.53	6.5

KEYS RETRIBUTION 18B
MJB VELOCITY 414E
 MJB MARY 134C

KEYS DIRECT FIRE 18Y
 MISS KEY KRISTIN 57Y
 MAC QUARTERBACK 58Y
 MJB YELLOW ROSE 138Z

Dam's Production	
BW	3 @ 86
WW	3 @ 106
Udder	9-8

PRK DURACELL 252D
PRK TOPAZ 847F
 PRK TOPAZ 6223D

DJF BORDER LINE 815A
 PRK ROBBIE 252Z
 SRS BULLSEYE 592B
 PRK WINTER 945W

CED	BW	WW	YW	MWW	Milk	Marb	REA	Doc	Stay
+12.8	-1.6	+60	+95	+44	+14	+0.2	+0.58	+15	+17

Quad Polled

- An attractive patterned bull with a little more size and stretch and good performance.
- Cow is a long bodied, very balanced female.
- All 3 of her sons have made the bull pen.



P 14 PRK KANSAS 866K \$3,800

Hom Black	Polled	1/2 SA 3/8 AN 1/8 AR			reg: P751159	
Born	BW	205 Wt	Index	11/5 Wt	WDA	Frame
3/7/2022	96	754	105	884	3.64	6.4

KEYS RETRIBUTION 18B		KEYS DIRECT FIRE 18Y		MISS KEY KRISTIN 57Y		<table border="1"> <tr> <th colspan="2">Dam's Production</th> </tr> <tr> <td>BW</td> <td>3 @ 83</td> </tr> <tr> <td>WW</td> <td>3 @ 104</td> </tr> <tr> <td>Udder</td> <td>9-9</td> </tr> </table>		Dam's Production		BW	3 @ 83	WW	3 @ 104	Udder	9-9
Dam's Production															
BW	3 @ 83														
WW	3 @ 104														
Udder	9-9														
MJB VELOCITY 414E		MAC QUARTERBACK 58Y		MJB YELLOW ROSE 138Z											
MJB MARY 134C		SRS ARIAT 270A		SRS PONY TAIL 0778T											
SRS CINCH 0778C		SRS SPARTACUS 0670Z		PRK LADY 466B											
PRK LADY 866F		PRK LADY 666D													

CED	BW	WW	YW	MWW	Milk	Marb	REA	Doc	Stay
+13	-0.9	+61	+93	+45	+15	+0.2	+0.49	+15	+20

Quad Polled

- A good performing, well made Velocity son.
- The dam is a feminine female with good milk and a super udder.
- Her other 2 calves were retained as replacements in the herd.
- She descends from a great cow family with amazing longevity.



Paternal Brother to Lots 10-15



PRK Jacuzzi 971J • March, 2022

P 15 PRK KENYA 980K \$3,800

Black	Polled	1/2 SA 3/8 AN 1/8 AR			reg: P751162	
Born	BW	205 Wt	Index	11/5 Wt	WDA	Frame
2/23/2022	79	693	97	818	3.21	5.5

KEYS RETRIBUTION 18B		KEYS DIRECT FIRE 18Y		MISS KEY KRISTIN 57Y		<table border="1"> <tr> <th colspan="2">Dam's Production</th> </tr> <tr> <td>BW</td> <td>2 @ 79</td> </tr> <tr> <td>WW</td> <td>2 @ 96</td> </tr> <tr> <td>Udder</td> <td>9-9</td> </tr> </table>		Dam's Production		BW	2 @ 79	WW	2 @ 96	Udder	9-9
Dam's Production															
BW	2 @ 79														
WW	2 @ 96														
Udder	9-9														
MJB VELOCITY 414E		MAC QUARTERBACK 58Y		MJB YELLOW ROSE 138Z											
MJB MARY 134C		SRS BULLSEYE 592B		SRS JULIET 0584R											
PRK ROSEBUD 980G		SRS XPERT 0881X		PRK ROSEBUD 070X											
PRK ROSEBUD 280Z															

CED	BW	WW	YW	MWW	Milk	Marb	REA	Doc	Stay
+13.6	-2.8	+54	+81	+40	+13	+0.2	+0.53	+13	+18

★★ Potential Heifer Bull • Quad Polled

- Bull with very good balance in phenotype and his numbers.
- A long bodied young female with an ideal udder and from a top cow family.
- We retained a Velocity son, PRK Jacuzzi 971J, last year for a herd sire in our program.

EPD and Catalog Explanations

Below is a chart showing the Salers Breed EPD Averages for all 2020 born cattle.

EPDs	CED	BW	WW	YW	MWW	Milk	Marb	REA	Doc	Stay
Breed Av	+12.2	+0.0	+59	+84	+46	+17	+0.0	+0.66	+10	+15

The Salers and Simmental breed associations are both part of the new IGS multi-breed genetic evaluation. This means you can directly compare the Salers, Optimizer, and Enhancer EPDs.

All EPDs in the catalog were current as of Nov. 1st. These are now updated weekly so you may find the most current EPD for any animal by using the American Salers Association website and search with the animal's registration number.

CED (calving ease direct) - Expressed as a % of unassisted births. A bull with a +17.2 would be expected to produce 5% more unassisted births than the average Salers bull when bred to the same cows.

Doc (Docility) - Expressed as a percentage of an animals offspring that would be expected to have mild or restless disposition scores (1 or 2) rather than nervous, flighty, or aggressive scores (3, 4, or 5). A +20 means an animals offspring would be 10% more likely to have mild disposition scores than the breed average.

Stay (Stayability) - Expressed as a percentage of daughters who will remain in the herd until age 6. Cattle with a stayability of +20 would have 5% more daughters remain in the herd until at least age 6 than the average Salers.

Color - Hom. Black (Homozygous Black) bulls were DNA tested and will produce all black offspring when bred to red or black cows. **Black** - Black hided animal possessing one black and one red gene. When they are bred to black females also with a red gene they will produce 75% black offspring. When bred to red cows they will produce 50% black calves.

Dam's Production - BW Number of calves born and their average actual birth weight in pounds. WW is the number of offspring weaned and their average weaning index. Udder is a two-digit score representing udder suspension and teat size with 9 being ideal. The first digit corresponds to udder suspension tightness and how level the udder floor and quarters are and the second digit represents the teat length, diameter, and shape.

P 16 PRK KILN 499K \$3,000

Black	Horned	1/2 SA 1/2 AN		reg: 751128		
Born	BW	205 Wt	Index	11/5 Wt	WDA	Frame
3/7/2022	99	753	105	856	3.52	5.6

SRS SPARTACUS 0670Z MJB GLADIATOR 305B MJB BARBIE 126Z	SRS XTRA 0347X SRS SEIKO 0670S MJB BARBWIRE 260S MJB MORGIANA 102S	Dam's Production BW 6 @ 90 WW 6 @ 105 Udder 9-9
SRS UNITED 0653U PRK KIT 499B PRK KIT 999W	SRS SAINT 0218S SRS STARR 0653S SRS MARKSMAN 0059M PRK KIT 245M	

CED	BW	WW	YW	MWW	Milk	Marb	REA	Doc	Stay
+12.1	+1.1	+65	+92	+51	+19	+0.1	+0.55	+16	+20

Horned

- Here is a thick topped, wide based bull.
- A deep bodied female with a super udder from a great cow family.
- She has produced 3 females in our herd, with one sending a bull to Midland this year.
- She is a maternal sister to the Lot #54 bull.

P 17 PRK KOOTENAI 554K \$3,800

Black	Scurred	1/2 SA 1/2 AN		reg: S751129		
Born	BW	205 Wt	Index	11/5 Wt	WDA	Frame
3/6/2022	95	755	105	916	3.75	6.1

SRS SPARTACUS 0670Z MJB GLADIATOR 305B MJB BARBIE 126Z	SRS XTRA 0347X SRS SEIKO 0670S MJB BARBWIRE 260S MJB MORGIANA 102S	Dam's Production BW 6 @ 89 WW 6 @ 102 Udder 7-7
PRK YELLOWSTONE 966Y PRKSUSSANAH 554C PRK SUSANNAH 154Y	SRS UPRISING 0059U PRK RECIPE 966W SRS UNITED 0653U PRK SUSANNAH 837U	

CED	BW	WW	YW	MWW	Milk	Marb	REA	Doc	Stay
+13.2	+0.6	+68	+97	+49	+15	+0.1	+0.6	+8	+19

Quad Polled

- A bull that combines good thickness with a lot of eye appeal and style.
- His dam is a long, deep bodied female with lots of milk.
- A full brother sold in our 2020 sale to Dustin & Shannon McCollum.

P 18 PRK KNOWLEDGE 799K \$3,400

Black	Polled	1/2 SA 3/8 AN 1/8 AR		reg: P751131		
Born	BW	205 Wt	Index	11/5 Wt	WDA	Frame
2/20/2022	84	690	96	826	3.20	6.0

SRS SPARTACUS 0670Z MJB GLADIATOR 305B MJB BARBIE 126Z	SRS XTRA 0347X SRS SEIKO 0670S MJB BARBWIRE 260S MJB MORGIANA 102S	Dam's Production BW 4 @ 76 WW 4 @ 98 Udder 8-8
DJF BORDER LINE 815A PRK KIT 799E PRK KIT 199Y	C-BAR EVOLUTION 107Y STCY UNITY 815U SRS UNITED 0653U PRK KIT 999W	

CED	BW	WW	YW	MWW	Milk	Marb	REA	Doc	Stay
+16	-2.2	+59	+88	+45	+15	+0.1	+0.53	+17	+17

★★★ Potential Heifer Bull • Quad Polled

- A heifer bull with a little more frame and lots of length.
- From the same great cow family as lots #16, #30, & #54.
- The dam is a tremendously thick and deep Border Line female.



P 19 PRK KOOL 990K \$3,400

Hom Black	Scurred	1/2 SA 3/8 AN 1/8 AR		reg: S751134		
Born	BW	205 Wt	Index	11/5 Wt	WDA	Frame
2/26/2022	90	772	108	854	3.39	5.9

SRS SPARTACUS 0670Z MJB GLADIATOR 305B MJB BARBIE 126Z	SRS XTRA 0347X SRS SEIKO 0670S MJB BARBWIRE 260S MJB MORGIANA 102S	Dam's Production BW 2 @ 83 WW 2 @ 100 Udder 9-9
PRK DURACELL 252D PRK ROSEBUD 990G PRK ROSEBUD 670D	DJF BORDER LINE 815A PRK ROBBIE 252Z SRS UNITED 0653U PRK ROSEBUD 470B	

CED	BW	WW	YW	MWW	Milk	Marb	REA	Doc	Stay
+14.2	-0.4	+69	+102	+48	+14	+0.1	+0.6	+11	+18

Quad Polled

- Kool is just that in his makeup and design.
- He will be an eye catcher in the pen.
- Dam is another high quality Duracell daughter with a great udder.

Full Brother to Lot 17



PRK Husky 554H • March, 2021

Full Brother to Lot 18



PRK Hampton 799H • March, 2021



P 20 PRK KIRK 062K \$3,400

Black		Polled		5/8 SA 3/8 AN		reg: P751691									
Born	BW	205 Wt	Index	11/5 Wt	WDA	Frame									
2/25/2022	96	757	106	856	3.38	6.0									
MJB GLADIATOR 305B PRK GOVERNOR 187G PRK JULIE 187Y		SRS SPARTACUS 0670Z MJB BARBIE 126Z SRS UNITED 0653U PRK JULIE 787T		SRS ARIAT 270A SRS PONY TAIL 0778T DJF BORDER LINE 815A PRK SENSATION 511C		<table border="1"> <tr><th colspan="2">Dam's Production</th></tr> <tr><td>BW</td><td>1 @ 96</td></tr> <tr><td>WW</td><td>1 @ 106</td></tr> <tr><td>Udder</td><td>9-9</td></tr> </table>		Dam's Production		BW	1 @ 96	WW	1 @ 106	Udder	9-9
Dam's Production															
BW	1 @ 96														
WW	1 @ 106														
Udder	9-9														
CED	BW	WW	YW	MWW	Milk	Marb	REA	Doc	Stay						
+15.5	+0	+63	+93	+47	+16	+0	+0.5	+13	+17						

Quad Polled

- Lots of length of body in this bull.
- His 2 year old dam is extremely balanced in her phenotype with lots of milk and a super udder.
- PRK Governor was a top selling bull in our 2019 sale to Jim & Terry Wilson.



P 21 PRK KINGSMAN 657K \$3,800

Hom Black		Polled		1/2 SA 1/2 AN		reg: P751237									
Born	BW	205 Wt	Index	11/5 Wt	WDA	Frame									
2/28/2022	94	688	96	842	3.37	5.6									
MJB GLADIATOR 305B PRK GOVERNOR 187G PRK JULIE 187Y		SRS SPARTACUS 0670Z MJB BARBIE 126Z SRS UNITED 0653U PRK JULIE 787T		SRS BULLSEYE 592B SRS JULIET 0584R JBS LANCELOT JR 81L PRK GINA 9713G		<table border="1"> <tr><th colspan="2">Dam's Production</th></tr> <tr><td>BW</td><td>5 @ 88</td></tr> <tr><td>WW</td><td>5 @ 96</td></tr> <tr><td>Udder</td><td>9-9</td></tr> </table>		Dam's Production		BW	5 @ 88	WW	5 @ 96	Udder	9-9
Dam's Production															
BW	5 @ 88														
WW	5 @ 96														
Udder	9-9														
CED	BW	WW	YW	MWW	Milk	Marb	REA	Doc	Stay						
+12.5	-0.8	+53	+73	+41	+15	+0.1	+0.51	+7	+18						

Quad Polled

- A very attractive and eye appealing bull that is clean in his design.
- He should sire some front pasture offspring or show quality calves.
- A moderate, very balanced, and feminine made female with a perfect udder behind this bull.

Sire of Lots 21-21



PRK Governor 187G • March, 2020



OPTIMIZER BULLS



P23 PRK KAZUKI 0107K \$3,000

Black	Polled	1/2 SA 3/8 AN 1/8 AR			reg: P751142	
Born	BW	205 Wt	Index	11/5 Wt	WDA	Frame
2/22/2022	78	687	96	766	2.99	5.0

DJF BORDER LINE 815A
PRK DURACELL 252D
 PRK ROBBIE 252Z

C-BAR EVOLUTION 107Y
 STCY UNITY 815U
 SRS WDA 270W
 PRK ROBBIE 852U
 SRS SPARTACUS 0670Z
 MJB BARBIE 126Z
 PRK BONSAI 993B
 PRK JULIE 187Y

Dam's Production	
BW	1 @ 78
WW	1 @ 96
Udder	9-8

CED	BW	WW	YW	MWW	Milk	Marb	REA	Doc	Stay
+16.9	-2.7	+56	+85	+41	+13	+0.1	+0.49	+6	+16

*** Potential Heifer Bull • Quad Polled

• Very nicely made 2 year old dam whose mother is a maternal sister to PRK Governor.

• PRK Duracell has been a very solid herd bull for many years.

P24 PRK KILOVOLT 592K \$3,400

Black	Polled	1/2 SA 3/8 AN 1/8 AR			reg: P751357	
Born	BW	205 Wt	Index	11/5 Wt	WDA	Frame
3/15/2022	96	764	107	904	3.85	6.5

DJF BORDER LINE 815A
PRK DURACELL 252D
 PRK ROBBIE 252Z

C-BAR EVOLUTION 107Y
 STCY UNITY 815U
 SRS WDA 270W
 PRK ROBBIE 852U
 SRS UPRISE 0059U
 SRS KRISTY 0996W
 SRS MARKSMAN 0059M
 PRK NAOMI 584R

Dam's Production	
BW	6 @ 93
WW	6 @ 108
Udder	7-7

CED	BW	WW	YW	MWW	Milk	Marb	REA	Doc	Stay
+12.6	-0.7	+61	+96	+48	+18	+0	+0.49	+9	+14

Quad Polled

• Lots of performance in this bull with a WDA of 3.85 lbs.

• A heavy milking, deep bodied female who has 2 prior sons as Midland graduates with an average MBT Index of 104.



P25 PRK KILOWATT 653K \$3,400

Red	Polled	1/2 SA 3/8 AN 1/8 AR			reg: P751150	
Born	BW	205 Wt	Index	11/5 Wt	WDA	Frame
3/7/2022	94	703	98	848	3.49	6.3

DJF BORDER LINE 815A
PRK DURACELL 252D
 PRK ROBBIE 252Z

C-BAR EVOLUTION 107Y
 STCY UNITY 815U
 SRS WDA 270W
 PRK ROBBIE 852U
 TOMBSTONE 050
 SRS FOOTLOOSE 9927J
 SRS UNITED 0653U
 PRK GINGER 032X

Dam's Production	
BW	5 @ 89
WW	5 @ 99
Udder	7-9

CED	BW	WW	YW	MWW	Milk	Marb	REA	Doc	Stay
+14.2	-1	+58	+92	+42	+13	+0	+0.44	+20	+15

Quad Polled

• Good combination of performance and eye appeal in this bull.

• Dam has put 3 females back in our herd.

P22 PRK KNOXVILLE 433K \$3,800

Red	Polled	5/8 SA 1/4 AR 1/8 AN			reg: P751126	
Born	BW	205 Wt	Index	11/5 Wt	WDA	Frame
3/6/2022	86	738	103	844	3.46	6.0

C-BAR EVOLUTION 107Y
 DJF BORDER LINE 815A
 STCY UNITY 815U

TR COLT 45 UT806
 LGS ABBY 689S
 S NEBRASKA 330N
 STCY NATALIE 315N
 SITZ UNCOMMON
 PRK MISS MONTANA 503R
 DJF ROLAN 5002R
 PRK GINA 9713G

Dam's Production	
BW	7 @ 84
WW	5 @ 103
Udder	8-8

CED	BW	WW	YW	MWW	Milk	Marb	REA	Doc	Stay
+14.2	-1.4	+61	+98	+46	+15	+0.1	+0.52	+2	+15

Quad Polled

• A very good red bull with a balanced phenotype and solid numbers.

• His Gold Dam is a very long, clean made female that is a maternal sister to the dam of lot #52.

• Border Line cattle have a lot of performance in an attractive, thick body type.

Maternal Brother to Lot 22



PRK Geyser 433G • March, 2020

Sire of Lot 22 • Grandsire of Lots 23-25



DJF Border Line 815A



P26 PRK KICKOFF 0119K \$3,800

Hom Black	Polled	1/2 SA 3/8 AN 1/8 AR			reg: P751186	
Born	BW	205 Wt	Index	11/5 Wt	WDA	Frame
2/13/2022	69	744	104	878	3.31	5.4

MJB ELWAY 322C PRK FULLBACK 280F PRK ROSEBUD 280Z		MAC QUARTERBACK 58Y MJB YELLOW ROSE 156Z SRS XPERT 0881X PRK ROSEBUD 070X		Dam's Production BW 1 @ 69 WW 1 @ 104 Udder 8-8					
SRS EL DORADO 4147E PRK CATHLEEN 0119H PRK CATHLEEN 837F		SRS BOTTOM LINE 978B SRS PONY TAIL 4147B SRS BENCHMARK 8105B PRK CATHLEEN 637D							
CED	BW	WW	YW	MWW	Milk	Marb	REA	Doc	Stay
+17.2	-4.3	+59	+83	+47	+18	+0.2	+0.5	+20	+15

- ★★★★ Potential Heifer Bull • Quad Polled
- Hard to find a bull with this much thickness and calving ease in one package.
 - Great top and quarter with a clean front.
 - Sire, PRK Fullback, was a top selling bull in our 2018 sale to Bruce & Heidi Thurgood.



P27 PRK KICKER 948K \$3,800

Hom Black	Polled	5/8 SA 3/8 AN			reg: P751193	
Born	BW	205 Wt	Index	11/5 Wt	WDA	Frame
2/28/2022	77	752	105	860	3.44	6.1

MJB ELWAY 322C PRK FULLBACK 280F PRK ROSEBUD 280Z		MAC QUARTERBACK 58Y MJB YELLOW ROSE 156Z SRS XPERT 0881X PRK ROSEBUD 070X		Dam's Production BW 2 @ 76 WW 2 @ 102 Udder 9-9					
SRS SPARTACUS 0670Z PRK JEWEL 948G PRK JEWEL 748E		SRS XTRA 0347X SRS SEIKO 0670S PRK ACE 081A PRK JEWEL 486B							
CED	BW	WW	YW	MWW	Milk	Marb	REA	Doc	Stay
+13.8	-1.5	+64	+87	+51	+19	+0.1	+0.54	+15	+18

- ★★ Potential Heifer Bull • Quad Polled
- Kicker is a great combination of light birthweight, good performance, and quality phenotype.
 - Dam is a high quality young female with an attractive style and excellent udder, typical of the Spartacus daughters.
 - She is 2 for 2 in producing sale bulls.

P28 PRK KILOMETER 271K \$3,800

Hom Black	Polled	1/2 SA 3/8 AN 1/8 AR			reg: P751201	
Born	BW	205 Wt	Index	11/5 Wt	WDA	Frame
3/4/2022	100	806	113	938	3.81	6.5

SRS BULLSEYE 592B PRK FLINT 198F PRK VIRGINIA 198Y		SOO LINE MOTIVE 9016 SRS JULIET 0584R SRS WANTED 0218W PRK VIRGINIA 898U		Dam's Production BW 9 @ 97 WW 9 @ 104 Udder 8-8					
SRS XPERT 0881X PRK ROBERTA 271Z PRK ROBERTA 071X		SRS PATENT 0221P SRS PRICELESS 0881U PRK TONKA 298T PRK ROBERTA 561R							
CED	BW	WW	YW	MWW	Milk	Marb	REA	Doc	Stay
+12.1	+0.8	+62	+84	+48	+17	+0	+0.44	+17	+17

- Quad Polled
- Great weaning index on this super long bodied Flint son.
 - His mother is a very attractive well designed 10 year old female with a solid udder.
 - Her other 3 sons have also made our production sale and a grandson is lot #60.



P29 PRK KELSO 985K \$3,400

Red	Scurred	1/2 SA 1/2 AN		reg: S751204		
Born	BW	205 Wt	Index	11/5 Wt	WDA	Frame
2/22/2022	93	747	104	868	3.39	6.1

SRS BULLSEYE 592B PRK FLINT 198F PRK VIRGINIA 198Y		SOO LINE MOTIVE 9016 SRS JULIET 0584R SRS WANTED 0218W PRK VIRGINIA 898U		Dam's Production BW 2 @ 85 WW 2 @ 101 Udder 9-9					
SRS DOMINANT 256D PRK RIBBON 985G PRK RIBBON 575C		SRS BANNER 0749B SRS JULIET 0829U SRS SPARTACUS 0670Z PRK RIBBON 348A							
CED	BW	WW	YW	MWW	Milk	Marb	REA	Doc	Stay
+13.4	-0.8	+60	+87	+46	+16	+0.1	+0.43	+23	+17

- Quad Polled
- Another extremely long spined Flint son.
 - A good uddered young female with lots of lenth.
 - PRK Flint is doing a great job as a light birthweight sire for us.
 - We really admired his first daughters as they calved this spring - moderate, smooth made, great udders, and wonderful dispositions.

OPTIMIZER BULLS

P30 PRK KEY WEST 1999K \$3,400

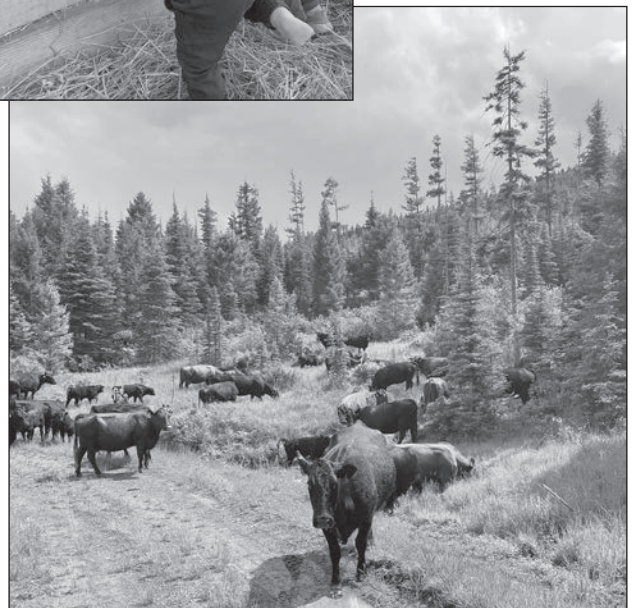
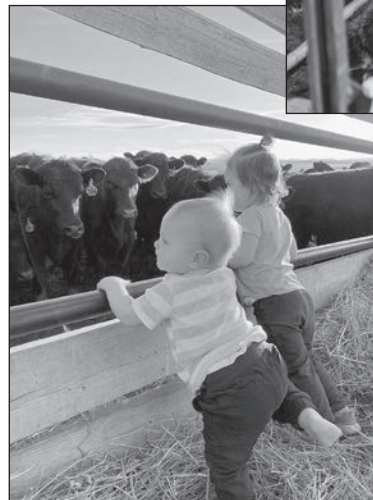
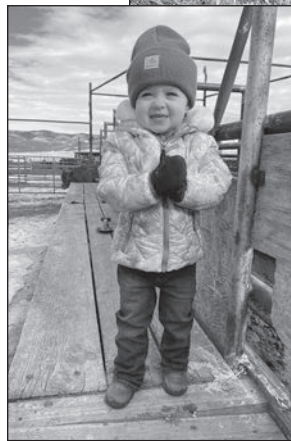
Hom Black		Polled	1/2 SA 1/2 AN		reg: P751270		
Born	BW	205 Wt	Index	11/5 Wt	WDA	Frame	
2/26/2022	94	712	100	806	3.20	5.4	

SRS DYNASTY 667D SRS GENERAL 4180G SRS JULIET 4180B	CONNEALY GREELEY SRS FINICKY 0838U SRS GUNSLINGER 605Z SRS JULIET 0218M CONNEALY BIG TIME 1251 7743 SRS COLUMBIA 4108B SRS UNITED 0653U PRK KIT 999W	Dam's Production BW 2 @ 84 WW 2 @ 100 Udder 9-8
SRS ENTITY 4108E PRK KIT 999G PRK KIT 199Y		

CED	BW	WW	YW	MWW	Milk	Marb	REA	Doc	Stay
+11.8	+0.7	+69	+100	+50	+16	+0.1	+0.5	+7	+19

Quad Polled

- Another bull from the Kit cow family.
- His dam is a maternal sister to the dam of lot #18 and her first calf is a top bred heifer.
- SRS General is a moderate framed bull with as much mass and volume as you will find anywhere.



P31 PRK KETTLE 884K \$3,800

Black		Polled	1/2 SA 1/2 AN		reg: P751275		
Born	BW	205 Wt	Index	11/5 Wt	WDA	Frame	
2/25/2022	87	714	100	850	3.36	5.8	

SRS DYNASTY 667D SRS GENERAL 4180G SRS JULIET 4180B	CONNEALY GREELEY SRS FINICKY 0838U SRS GUNSLINGER 605Z SRS JULIET 0218M SRS ARIAT 270A SRS PONY TAIL 0778T MAC F1 HUMBOLDT 312Z PRK HONOR 460B	Dam's Production BW 3 @ 81 WW 3 @ 102 Udder 8-8
SRS CINCH 0778C PRK HONOR 884F PRK HONOR 654D		

CED	BW	WW	YW	MWW	Milk	Marb	REA	Doc	Stay
+14.5	-0.6	+65	+95	+49	+17	+0.1	+0.49	-1	+18

Quad Polled

- A well made, balanced, and attractively designed bull.
- The Honor cow is a very long and deep sided female with a very balanced phenotype.
- She milks well and has produced 2 replacement females before this bull.

Dam of Lot 31



PRK Honor 884F



OPTIMIZER BULLS

Sire of Lots 32, 33



DJF Garner 816G



Sire of Lot 34



SRS Hoosier 8122H

P 34 PRK KEVIN 758K \$3,000

Black	Polled	1/2 SA	3/8 AN	1/8 AR	reg: P751313		
Born	BW	205 Wt	Index	11/5 Wt	WDA	Frame	
2/24/2022	76	673	94	770	3.03	5.3	

SRS EL DORADO 4147E
SRS HOOSIER 8122H
 SRS COLUMBIA 8122F

SRS BOTTOM LINE 978B
 SRS PONY TAIL 4147B
 HF DISTINCT 104D
 SRS COLUMBIA 4101B
 SRS ARIAT 270A
 PRK VIRGINIA 098X
 SRS UNITED 0653J
 PRK TEARDROP 973W

Dam's Production	
BW	5 @ 72
WW	5 @ 98
Udder	9-8

CED	BW	WW	YW	MWW	Milk	Marb	REA	Doc	Stay
+15.5	-2.9	+50	+75	+41	+16	+0.1	+0.44	+10	+14

★★★ Potential Heifer Bull • Quad Polled

- Should make a consistent heifer bull.
- An easy fleshing female with a solid udder backs this bull.

P 32 PRK KRAFT 780K \$3,800

Hom Black	Polled	1/2 SA	1/2 AN	reg: P751281			
Born	BW	205 Wt	Index	11/5 Wt	WDA	Frame	
3/11/2022	92	764	107	886	3.71	6.1	

PVF INSIGHT 0129
DJF GARNER 816G
 DJF URBANA 816U

S A V BRILLIANCE 8077
 PVF MISSIE 790
 MBF 83KB
 DJF SARA 616S

SRS BULLSEYE 592B
PRK ROSEBUD 780E
 PRK ROSEBUD 280Z

SOO LINE MOTIVE 9016
 SRS JULIET 0584R
 SRS XPERT 0881X
 PRK ROSEBUD 070X

Dam's Production	
BW	4 @ 83
WW	4 @ 103
Udder	8-8

CED	BW	WW	YW	MWW	Milk	Marb	REA	Doc	Stay
+10.7	+0.7	+65	+96	+51	+19	+0	+0.76	+6	+17

Quad Polled

- This bull has a very neat design with a great hip and very good performance.
- His mother has a very clean, extended front and a lot of length of body.

P 33 PRK KIP 894K \$3,000

Black	Polled	1/2 SA	3/8 AN	1/8 AR	reg: P751283		
Born	BW	205 Wt	Index	11/5 Wt	WDA	Frame	
3/24/2022	97	801	112	816	3.61	5.9	

PVF INSIGHT 0129
DJF GARNER 816G
 DJF URBANA 816U

S A V BRILLIANCE 8077
 PVF MISSIE 790
 MBF 83KB
 DJF SARA 616S

PRK TONKA 298T
PRK JASMINE 894F
 PRK JASMINE 394A

SRS NOKIA 9722N
 PRK VIRGINIA 298M
 SRS YAKIMA 9118YY
 PRK JASMINE 194Y

Dam's Production	
BW	3 @ 87
WW	3 @ 103
Udder	8-8

CED	BW	WW	YW	MWW	Milk	Marb	REA	Doc	Stay
+9.4	+2.3	+65	+94	+53	+20	+0.1	+0.65	+15	+18

Quad Polled

- A younger bull with a lot of performance and potential.
- A well made and balanced female who has a top heifer in our replacement group.

Maternal Grand sire of Lot 34



PRK Captain 098C



OPTIMIZER BULLS

P 35 PRK KAWASAKI 0195K \$3,800

Hom Black	Polled	1/2 SM 1/4 SA 1/4 AN			reg: P751328	
Born	BW	205 Wt	Index	11/5 Wt	WDA	Frame
2/5/2022	91	756	106	920	3.37	5.7

J BAR J NIGHTRIDE 25Z
GW TRIPLE CROWN 018C
 GW MISS GPRD 359A

HOOK'S EAGLE 6E
PRK JUICE 0195H
 PRK JUICE 125Y

GW PREMIUM BEEF 021TS
 J BAR J MISS ND 793X
 GW PREDESTINED 701T
 GW MISS PREM BEEF 240Y

HOOK'S BLACK HAWK 50B
 HOOK'S CRYSTAL 1C
 SRS UMPIRE 0584U
 725T

Dam's Production	
BW	1 @ 91
WW	1 @ 106
Udder	8-8

CED	BW	WW	YW	MWW	Milk	Marb	REA	Doc	Stay
+13	-1	+84	+132	+59	+17	+0.5	+1.05	+25	+18

Quad Polled

- A 2nd generation product of our Enhancer Program with a great balanced EPD profile.
- His 2 year old dam is a good milking, very long and deep bodied Eagle daughter.
- She is a maternal sister to the Lot #46 bull.

P 37 PRK KODA 040K \$3,400

Hom Black	Polled	3/8 SA 3/8 SM 1/4 AN			reg: P751330	
Born	BW	205 Wt	Index	11/5 Wt	WDA	Frame
2/10/2022	92	753	105	894	3.34	5.4

J BAR J NIGHTRIDE 25Z
GW TRIPLE CROWN 018C
 GW MISS GPRD 359A

MAC FRONTIER 184F
PRK SHANNON 040H
 PRK SHANNON 251Z

GW PREMIUM BEEF 021TS
 J BAR J MISS ND 793X
 GW PREDESTINED 701T
 GW MISS PREM BEEF 240Y

MAC DECADE 140D
 MAC YORANN 258Y
 SRS XTRA 0347X
 SRS SHANNON 1051X

Dam's Production	
BW	1 @ 92
WW	1 @ 105
Udder	8-8

CED	BW	WW	YW	MWW	Milk	Marb	REA	Doc	Stay
+13.8	+0	+77	+119	+56	+17	+0.4	+0.9	+22	+19

Quad Polled

- A more moderate Enhancer that still carries a lot of depth of rib and volume typical of the Triple Crown calves.
- Triple Crown is a proven 5/8 Simmental sire known for top of the breed All Purpose and Terminal Indexes and a disposition improver.

P 36 PRK KEROSENE 0198K \$3,800

Hom Black	Polled	1/2 SM 3/8 AN 1/8 SA			reg: P751329	
Born	BW	205 Wt	Index	11/5 Wt	WDA	Frame
2/14/2022	80	774	108	882	3.34	5.7

J BAR J NIGHTRIDE 25Z
GW TRIPLE CROWN 018C
 GW MISS GPRD 359A

S D S GRADUATE 006X
PRK HICKORY 0198H
 PRK HICKORY 728E

GW PREMIUM BEEF 021TS
 J BAR J MISS ND 793X
 GW PREDESTINED 701T
 GW MISS PREM BEEF 240Y

HOOKS SHEAR FORCE 38K
 S D S QUEEN 814U
 SRS BULLSEYE 592B
 PRK HICKORY 418B

Dam's Production	
BW	1 @ 80
WW	1 @ 108
Udder	7-6

CED	BW	WW	YW	MWW	Milk	Marb	REA	Doc	Stay
+15.3	-2.1	+79	+124	+61	+22	+0.4	+1.06	+16	+19

★★ Potential Heifer Bull • Quad Polled

- Kerosene is a lighter birthweight bull with lots of performance and one we have had our eye on all summer.
- Lots of maternal strength in this pedigree.
- His mother is a very heavy milking young cow with lots of capacity and length.
- She is a maternal sister to our Enhancer herd sire, PRK GPS, whose mother is an ideal female in our eyes.



Breed Explanations

Optimizer - Term used by the Salers Association to refer to cattle that are crossbred between registered Salers and Angus or Red Angus cattle.

Enhancer - Name we have given to our 3-way cross cattle which are made up of Salers, Simmental, and Angus or Red Angus. We have been using 1/2 to 3/4 Salers X Angus or Red Angus and breeding them to 1/2 to 3/4 Simmental X Angus or Red Angus. We are more concerned with the quality and type of cattle and their beneficial contributions to our program than specific percentages.

We have been breeding Salers cattle for 25 years and prior to that were using Simmental in our commercial herd. We have decided to again incorporate some Simmental genetics into part of our cattle. We feel this can increase the level of hybrid vigor and genetic diversity available to our customers. Simmental can contribute performance, depth, thickness, and rib eye area to their offspring. Salers cattle add calving ease, calf vigor, dressing percentage, fertility, hardiness and a cleaner more eye appealing phenotype. All three of the breeds are very strong in maternal traits and that continues to be a big focus of our breeding program! We plan to continue to breed Salers cattle as well as Optimizers as we increase and develop our Enhancer program.



P 40 PRK KINGSTON 081K \$3,400

Black	Polled	1/2 AN	3/8 SM	1/8 SA	reg: P751333	
Born	BW	205 Wt	Index	11/5 Wt	WDA	Frame
3/6/2022	77	702	98	826	3.39	5.9

J BAR J NIGHTRIDE 25Z
GW TRIPLE CROWN 018C
 GW MISS GPRD 359A

GW PREMIUM BEEF 021TS
 J BAR J MISS ND 793X
 GW PREDESTINED 701T
 GW MISS PREM BEEF 240Y

SRS UNREAL 0151U
PRK GINA 081X
 PRK GINA 9713G

SRS MARKSMAN 0059M
 SRS LYNN 0151L
 SRS OUTLOOK 9329E
 9551 AN DAM

Dam's Production	
BW	11 @ 89
WW	11 @ 103
Udder	7-8

CED	BW	WW	YW	MWW	Milk	Marb	REA	Doc	Stay
+16.4	-3.4	+59	+91	+51	+22	+0.4	+0.7	+19	+20

*** Potential Heifer Bull • Quad Polled

- A heifer bull that should sire some tremendous females.
- His 12 year old dam is a good milking, moderate, attractively designed female.
- She has stood the test of time and has produced some great ones over the years and continues to do so with her 12th calf on it's way early next calving season.

P 38 PRK KOOL KAT 057K \$3,400

Hom Black	Polled	3/8 AN	3/8 SM	1/4 SA	reg: P751331	
Born	BW	205 Wt	Index	11/5 Wt	WDA	Frame
2/16/2022	92	758	106	876	3.34	6.2

J BAR J NIGHTRIDE 25Z
GW TRIPLE CROWN 018C
 GW MISS GPRD 359A

MJB GLADIATOR 305B
PRK GINA 057H
 PRK GINA 727E

GW PREMIUM BEEF 021TS
 J BAR J MISS ND 793X
 GW PREDESTINED 701T
 GW MISS PREM BEEF 240Y

SRS SPARTACUS 0670Z
 MJB BARBIE 126Z
 SRS BULLSEYE 592B
 PRK GINA 943W

Dam's Production	
BW	1 @ 92
WW	1 @ 106
Udder	9-9

CED	BW	WW	YW	MWW	Milk	Marb	REA	Doc	Stay
+13.1	+0.3	+79	+123	+56	+17	+0.4	+0.92	+14	+19

Quad Polled

- This Enhancer inherited the style and clean made phenotype of his Salers dam along with the added performance from Triple Crown.
- His young dam milks well with a great udder structure and she is a maternal sister to the lot #52 bull.



P 39 PRK KABOOM 077K \$3,800

Hom Black	Scurred	3/8 AN	3/8 SM	1/4 SA	reg: S751332	
Born	BW	205 Wt	Index	11/5 Wt	WDA	Frame
2/15/2022	88	863	121	940	3.57	6.5

J BAR J NIGHTRIDE 25Z
GW TRIPLE CROWN 018C
 GW MISS GPRD 359A

GGT FINAL CHOICE 119B
PRK ROBIN 077H
 PRK ROBIN 377A

GW PREMIUM BEEF 021TS
 J BAR J MISS ND 793X
 GW PREDESTINED 701T
 GW MISS PREM BEEF 240Y

GGT P BLK HEAVY HITTER
 GGT MS FINALITY 139Y
 SRS YAHTZEE 996Y
 PRK ROBIN 577R

Dam's Production	
BW	1 @ 88
WW	1 @ 121
Udder	9-9

CED	BW	WW	YW	MWW	Milk	Marb	REA	Doc	Stay
+14.6	-1.2	+83	+129	+63	+22	+0.4	+0.95	+23	+18

Quad Polled

- Performance plus in this deep sided and long spined bull.
- He weaned off his 2 year old dam at over 900 lbs and has over a 3.5 lbs WDA.
- His grand dam is an easy fleshing, very deep moderate female who is a Gold Dam.



ENHANCER BULLS

P41 PRK KATLEMASTER 528K \$3,800

Hom Black	Polled	3/8 SA 3/8 AN 1/4 SM			reg: P751334	
Born	BW	205 Wt	Index	11/5 Wt	WDA	Frame
3/6/2022	99	795	111	914	3.75	6.2

J BAR J NIGHTRIDE 25Z
GW TRIPLE CROWN 018C
 GW MISS GPRD 359A

SRS ARIAT 270A
PRK GINA 528C
 PRK GINA 308A

GW PREMIUM BEEF 021TS
 J BAR J MISS ND 793X
 GW PREDESTINED 701T
 GW MISS PREM BEEF 240Y
 TOMBSTONE 050
 SRS FOOTLOOSE 9927J
 SRS YUMA 072Y
 PRK GINA 933W

Dam's Production	
BW	6 @ 88
WW	6 @ 109
Udder	7-8

CED	BW	WW	YW	MWW	Milk	Marb	REA	Doc	Stay
+12.3	-0.5	+79	+123	+59	+20	+0.4	+0.86	+15	+18

Quad Polled

- Another pound producing Enhancer bull.
- Potential herd sire that is attractively designed and backed by super maternal.
- His mother is a Gold Dam with great thickness and depth who also milks very well.
- She has produced 2 bulls & 4 replacement females in her 6 calves with a 109 weaning index!



LOT 41

P42 PRK KING 624K \$3,800

Hom Black	Polled	3/8 AN 3/8 SA 1/4 SM			reg: P751335	
Born	BW	205 Wt	Index	11/5 Wt	WDA	Frame
3/6/2022	89	780	109	896	3.67	6.3

J BAR J NIGHTRIDE 25Z
GW TRIPLE CROWN 018C
 GW MISS GPRD 359A

MAC F1 HUMBOLDT 312Z
PRK MONTANA 624D
 PRK MONANA 424B

GW PREMIUM BEEF 021TS
 J BAR J MISS ND 793X
 GW PREDESTINED 701T
 GW MISS PREM BEEF 240Y
 WERNER WAR PARTY 2417
 MAC BLK MELODY 243M
 SRS UNITED 0653U
 PRK MONTANA 807U

Dam's Production	
BW	5 @ 85
WW	5 @ 107
Udder	6-6

CED	BW	WW	YW	MWW	Milk	Marb	REA	Doc	Stay
+14.4	-1.6	+76	+120	+61	+24	+0.5	+0.91	+22	+20

Quad Polled

- A very long sided and good topped potential herd sire with a great balanced EPD profile.
- Dam has reached Gold Dam status.
- She is a heavy milking, easy fleshing female who has as much volume and capacity as you will find.



LOT 42



LOT 44

P43 PRK KNIGHT RIDER 888K \$3,400

Black White Face	Polled	3/8 AN 3/8 SM 1/4 SA			reg: P751336	
Born	BW	205 Wt	Index	11/5 Wt	WDA	Frame
2/27/2022	84	740	103	850	3.39	6.2

J BAR J NIGHTRIDE 25Z
GW TRIPLE CROWN 018C
 GW MISS GPRD 359A

SRS CINCH 0778C
PRK MOLLY 888F
 PRK MOLLY 628D

GW PREMIUM BEEF 021TS
 J BAR J MISS ND 793X
 GW PREDESTINED 701T
 GW MISS PREM BEEF 240Y
 SRS ARIAT 270A
 SRS PONY TAIL 0778T
 DJF BORDER LINE 815A
 PRK MOLLY 828U

Dam's Production	
BW	3 @ 77
WW	3 @ 98
Udder	9-8

CED	BW	WW	YW	MWW	Milk	Marb	REA	Doc	Stay
+16.4	-2.8	+72	+118	+54	+18	+0.4	+0.79	+24	+17

*** Potential Heifer Bull • Quad Polled

- You won't give up performance with this heifer bull.
- This is the bull for you if your wife or daughter want a little white on them.
- The Cinch daughters are making top females.
- A thick made and easy fleshing female from the same cow family as lot #47.

P44 PRK KENAI 0122K \$3,800

Hom Black	Polled	1/2 AN 1/4 SA 1/4 SM			reg: P751338	
Born	BW	205 Wt	Index	11/5 Wt	WDA	Frame
2/7/2022	84	796	111	956	3.53	6.0

R B TOUR OF DUTY 177
GIBBS 6155D SUPER DUTY
 SSF BLK LOUISE Y534

MAC F1 ENDURO 43E
PRK UNITY 0122H
 PRK UNITY 752E

WERNER WAR PARTY 2417
 B A LADY 6807 305
 SSF BLK MIDLAND T525
 SSF BLK LOUISE S824
 CONNEALY COMRADE 1385
 MAC CARINA 176C
 MJB ELWAY 322C
 PRK UNITY 552C

Dam's Production	
BW	1 @ 84
WW	1 @ 111
Udder	8-9

CED	BW	WW	YW	MWW	Milk	Marb	REA	Doc	Stay
+16.2	-1.1	+76	+115	+62	+24	+0.3	+0.62	+13	+18

* Potential Heifer Bull • Quad Polled

- Long, deep Enhancer bull who could be used on larger heifers or cows.
- His 2 year old dam is at the top of the herd with great milk, extremely deep bodied, and wonderful eye appeal.
- Her dam is a Gold Dam whose 3 daughters have all been retained in the herd.

ENHANCER BULLS

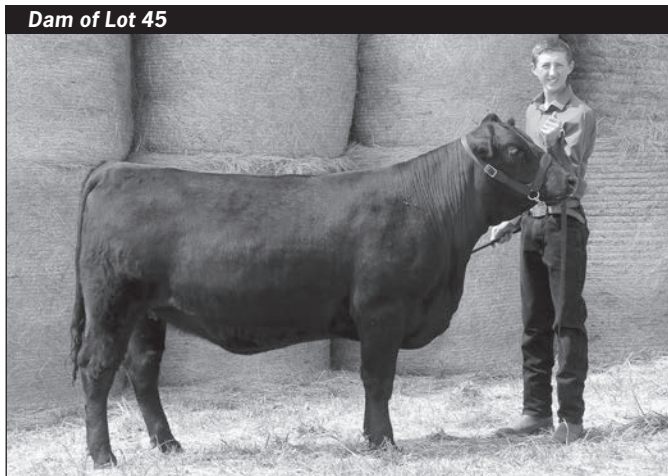


P 45 PRK KOBE 080K \$3,400

Hom Black	Polled	3/8 AN 1/4 SA 1/4 SM 1/8 AR	reg: P751340			
Born	BW	205 Wt	Index	11/5 Wt	WDA	Frame
2/4/2022	77	665	93	814	2.97	4.6

R B TOUR OF DUTY 177 GIBBS 6155D SUPER DUTY SSF BLK LOUISE Y534	WERNER WAR PARTY 2417 B A LADY 6807 305 SSF BLK MIDLAND T525 SSF BLK LOUISE S824 GGT P BLK HEAVY HITTER GGT MS FINALITY 139Y DJF BORDER LINE 815A PRK SHANNON 251Z	Dam's Production BW 1 @ 77 WW 1 @ 93 Udder 9-9							
GGT FINAL CHOICE 119B PRK SHANNON 080H PRK SHANNON 838F									
CED	BW	WW	YW	MWW	Milk	Marb	REA	Doc	Stay
+16.2	-2.6	+66	+100	+52	+19	+0.2	+0.54	+21	+17

- *** Potential Heifer Bull • Quad Polled
- Small framed heifer bull with some dimension and muscle shape.
 - Excellent disposition for both him and his dam.
 - She has good milk and an ideal phenotype with length and thickness.
 - She was shown by Scott as a yearling at our Tri County Fair and received Grand Champion Female.



PRK Shannon 080H • August, 2021

P 46 PRK KARATE 125K \$3,800

Hom Black	Polled	1/2 SA 1/4 AN 1/4 SM	reg: P751341			
Born	BW	205 Wt	Index	11/5 Wt	WDA	Frame
2/27/2022	84	738	103	856	3.41	5.4

R B TOUR OF DUTY 177 GIBBS 6155D SUPER DUTY SSF BLK LOUISE Y534	WERNER WAR PARTY 2417 B A LADY 6807 305 SSF BLK MIDLAND T525 SSF BLK LOUISE S824 CRO SURVEY 615S SRS JULIET 0584R TSB FRESNO 149R PRK JUICE 421P	Dam's Production BW 10 @ 83 WW 10 @ 95 Udder 9-8							
SRS UMPIRE 0584U PRK JUICE 125Y 725T									
CED	BW	WW	YW	MWW	Milk	Marb	REA	Doc	Stay
+14	-2	+64	+95	+51	+19	+0.1	+0.61	+22	+17

- ** Potential Heifer Bull • Quad Polled
- Thick topped bull with length, balance and a good disposition.
 - Long, attractive, good uddered and proven female.
 - Super Duty is know for his excellent dam and great milking and quality uddered daughters.

P 47 PRK KING KONG 428K \$3,800

Black	Polled	3/8 AN 3/8 SA 1/4 SM	reg: P751343			
Born	BW	205 Wt	Index	11/5 Wt	WDA	Frame
2/22/2022	93	842	118	1061	4.14	6.4

R B TOUR OF DUTY 177 GIBBS 6155D SUPER DUTY SSF BLK LOUISE Y534	WERNER WAR PARTY 2417 B A LADY 6807 305 SSF BLK MIDLAND T525 SSF BLK LOUISE S824 SITZ UNCOMMON PRK MISS MONTANA 503R DJF ROLEN 5002R PRK MOLLY 254M	Dam's Production BW 7 @ 90 WW 7 @ 108 Udder 6-5							
SRS ZEUS 0509Z PRK BONNIE 428B PRK MOLLY 828U									
CED	BW	WW	YW	MWW	Milk	Marb	REA	Doc	Stay
+14.2	-0.4	+76	+114	+64	+26	+0.2	+0.65	+14	+18

- Quad Polled
- Bonnie strikes again with another massive, long, thick and powerful bull.
 - King Kong weaned at over 950 lbs and has a WDA over 4.1 lbs with no creep feed.
 - Bonnie is a Gold Dam who exemplifies length, thickness, and fleshing ability and has produced several top bulls.



PRK Explosive 428E • March 2018



PRK Gizmo 428G • September, 2019



LOT 48

P48 PRK KALISPELL 1909K \$3,400

Black	Polled	3/8 AN	3/8 SM	1/4 SA	reg: P751320		
Born	BW	205 Wt	Index	11/5 Wt	WDA	Frame	
2/20/2022	90	708	99	830	3.22	5.0	

HOOKS SHEAR FORCE 38K TFS DUE NORTH 2659Z TFS 1/4 SM 3/4 AN 8419T	NICHOLS LEGACY G151 C&D TRACY MYTTY IN FOCUS TFS GOOD AS GOLD 0056K 6	Dam's Production BW 2 @ 83 WW 2 @ 99 Udder 9-9							
SRS CINCH 0778C PRK HANNAH 1909G PRK HANNAH 729E	SRS ARIAT 270A SRS PONY TAIL 0778T DJF BORDER LINE 815A PRK HANNAH 419B								
CED	BW	WW	YW	MWW	Milk	Marb	REA	Doc	Stay
+15	-1	+67	+105	+51	+17	+0.3	+0.52	+21	+16

Quad Polled

- A moderate, well balanced, and thick Enhancer bull.
- His young dam is a beautiful Cinch daughter who has a perfect udder.



LOT 49

P49 PRK KNOME 367K \$3,400

Hom Black	Scurred	3/8 AN	3/8 SM	1/4 SA	reg: S751321		
Born	BW	205 Wt	Index	11/5 Wt	WDA	Frame	
2/22/2022	77	692	97	826	3.23	5.0	

HOOKS SHEAR FORCE 38K TFS DUE NORTH 2659Z TFS 1/4 SM 3/4 AN 8419T	NICHOLS LEGACY G151 C&D TRACY MYTTY IN FOCUS TFS GOOD AS GOLD 0056K 6	Dam's Production BW 7 @ 81 WW 7 @ 96 Udder 8-8							
SRS WDA 270W PRK GLASGOW 367A PRK GLASGOW 167Y	S A V 004 DENSITY 4336 SRS FOOTLOOSE 9927J PRK TONKA 298T PRK GLASGOW 547R								
CED	BW	WW	YW	MWW	Milk	Marb	REA	Doc	Stay
+17.1	-3.6	+56	+83	+46	+18	+0.3	+0.46	+12	+18

★★★★ Potential Heifer Bull • Quad Polled

- Heifer bull with lots of length and thickness in a moderate package.
- Proven cow that is smaller framed, very deep ribbed, and attractively designed with good milk.

P50 PRK KETCHUM 715K \$3,400

Black	Polled	3/8 SA	3/8 AN	1/4 SM	reg: P751323		
Born	BW	205 Wt	Index	11/5 Wt	WDA	Frame	
3/6/2022	98	715	100	860	3.52	6.0	

HOOKS SHEAR FORCE 38K TFS DUE NORTH 2659Z TFS 1/4 SM 3/4 AN 8419T	NICHOLS LEGACY G151 C&D TRACY MYTTY IN FOCUS TFS GOOD AS GOLD 0056K 6	Dam's Production BW 4 @ 92 WW 4 @ 97 Udder 9-8							
SRS BULLSEYE 592B PRK HICKORY 715E PRK HICKORY 116Y	SOO LINE MOTIVE 9016 SRS JULIET 0584R DJF WHISKEY RIVER 9006W PRK HICKORY 603S								
CED	BW	WW	YW	MWW	Milk	Marb	REA	Doc	Stay
+9.8	+0.3	+64	+96	+46	+14	+0.2	+0.59	+23	+17

Quad Polled

- The Hickory cow is typical of SRS Bullseye daughters with great balance, moderate frame, and a high quality udder.
- Due North is a proven, consistent sire who is known for producing offspring that are very functional, have good dispositions, and great udders.



LOT 51

P51 PRK KODIAK 781K \$3,800

Black	Polled	3/8 AN	3/8 SM	1/4 SA	reg: P751324		
Born	BW	205 Wt	Index	11/5 Wt	WDA	Frame	
2/25/2022	82	716	100	908	3.59	5.8	

HOOKS SHEAR FORCE 38K TFS DUE NORTH 2659Z TFS 1/4 SM 3/4 AN 8419T	NICHOLS LEGACY G151 C&D TRACY MYTTY IN FOCUS TFS GOOD AS GOLD 0056K 6	Dam's Production BW 4 @ 88 WW 4 @ 103 Udder 9-9							
MJB ELWAY 322C PRK GINA 781E PRK GINA 081X	MAC QUARTERBACK 58Y MJB YELLOW ROSE 156Z SRS UNREAL 0151U PRK GINA 9713G								
CED	BW	WW	YW	MWW	Milk	Marb	REA	Doc	Stay
+14.5	-1.7	+62	+91	+51	+20	+0.4	+0.52	+19	+17

★★ Potential Heifer Bull • Quad Polled

- A lighter birth weight bull that still possess great performance and is backed by a strong cow family.
- Dam is long bodied and has a great phenotype and udder design.
- Her 2 daughters are top end females in our herd and she is a maternal sister to lot #40.





LOT 52



LOT 53

P 52 PRK KNIGHT 727K \$3,800

Black	Polled	3/8 SM	3/8 SA	1/4 AN	reg: P751215	
Born	BW	205 Wt	Index	11/5 Wt	WDA	Frame
3/7/2022	102	762	107	902	3.71	5.8

HOOK'S BLACK HAWK 50B
HOOK'S EAGLE 6E
 HOOK'S CRYSTAL 1C

HOOK'S XAVIER 14X
 HOOK'S YVETTE 100Y
 GW-WBF SUBSTANCE 820Y
 HOOK'S UNDERESTIMATED 6U

SRS BULLSEYE 592B
PRK GINA 727E
 PRK GINA 943W

Dam's Production
 BW **4 @ 91**
 WW **4 @ 104**
 Udder **8-8**

CED	BW	WW	YW	MWW	Milk	Marb	REA	Doc	Stay
+10.1	+0.5	+80	+124	+56	+16	+0.3	+0.99	+13	+19

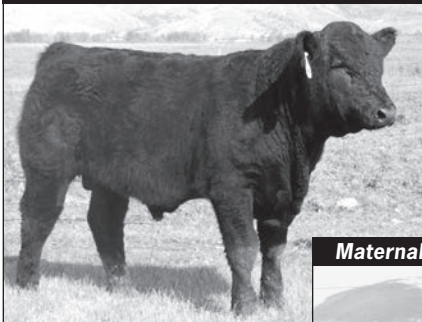
Quad Polled

- Performance and phenotype are combined in this Enhancer.
- His dam is very clean made and feminine in her design and from the same Gina cow family as lots #22, #40, #51 & #59.
- Eagle sires calves with unmatched volume, depth, and performance.



LOT 52

Maternal Brother to Lot 54



PRK Express 999E
 September, 2017

Maternal Brother to Lot 54



PRK Zoro 999Z • January 2013

P 53 PRK KRYPTONYTE 533K \$3,800

Red	Scurred	5/8 SA	1/4 AN	1/8 SM	reg: S751302	
Born	BW	205 Wt	Index	11/5 Wt	WDA	Frame
2/23/2022	90	724	101	896	3.51	6.2

HOOK'S EAGLE 6E
PRK HERCULES 615H
 PRK HIGHLIGHT 615D

HOOK'S BLACK HAWK 50B
 HOOK'S CRYSTAL 1C
 MAC F1 HUMBOLDT 312Z
 PRK HIGHLIGHT 409B

SRS ARIAT 270A
PRK MONTANA 533C
 PRK MONTANA 213Z

Dam's Production
 BW **6 @ 83**
 WW **6 @ 98**
 Udder **7-6**

CED	BW	WW	YW	MWW	Milk	Marb	REA	Doc	Stay
+13.6	-1.5	+72	+110	+54	+18	+0.1	+0.87	+9	+18

- The only red Enhancer in the sale but as thick, long, and good as any.
- The Montana cow is long bodied, thick, balanced, and heavy milking.
- She is a maternal sister to the Herd Sire, PRK Gold Rush 213G, owned by Silver Spur Salers.
- PRK Hercules was a top selling bull in our 2020 Production sale to Bruce & Heidi Thurgood and out of a Gold Dam.

P 54 PRK KENO 999K \$3,800

Black	Polled	1/2 SA	1/4 AN	1/4 SM	reg: P751306	
Born	BW	205 Wt	Index	11/5 Wt	WDA	Frame
2/25/2022	86	747	104	902	3.57	6.6

HOOK'S EAGLE 6E
PRK HERCULES 615H
 PRK HIGHLIGHT 615D

HOOK'S BLACK HAWK 50B
 HOOK'S CRYSTAL 1C
 MAC F1 HUMBOLDT 312Z
 PRK HIGHLIGHT 409B

SRS MARKSMAN 0059M
PRK KIT 999W
 PRK KIT 245M

Dam's Production
 BW **12 @ 85**
 WW **12 @ 104**
 Udder **8-8**

CED	BW	WW	YW	MWW	Milk	Marb	REA	Doc	Stay
+12.9	-1.6	+68	+101	+58	+24	+0.1	+0.71	+24	+18

- Keno is a bigger framed bull with tremendous length and performance.
- This cow family has a big influence in our herd and has 4 bulls in this sale. She is a deep ribbed, good milking Gold Dam who has put all 12 of her calves in the replacement or bull sale pen.
- 6 of her daughters are still producing in our herd.

Sire of Lots 53, 54



PRK Hercules 615H

P 55 PRK KABOB 0196K \$3,800

Hom Black	Polled	3/8 AN 3/8 SM 1/4 SA			reg: P751216	
Born	BW	205 Wt	Index	11/5 Wt	WDA	Frame
2/8/2022	87	727	102	874	3.24	5.0

MSR TENACITY 3733A
PRK GPS 728G
 PRK HICKORY 728E

CONNEALY CONFIDENCE 0100
 MSR 1206Y OF 9325W SBET
 SRS BULLSEYE 592B
 PRK HICKORY 418B

HOOK'S EAGLE 6E
PRK LADY 0196H
 PRK LADY 1516C

HOOK'S BLACK HAWK 50B
 HOOK'S CRYSTAL 1C
 PRK ACE 081A
 PRK LADY 886U

Dam's Production	
BW	1 @ 87
WW	1 @ 102
Udder	9-9

CED	BW	WW	YW	MWW	Milk	Marb	REA	Doc	Stay
+14.7	-0.7	+69	+99	+56	+22	+0.2	+0.68	+14	+17

Quad Polled

- 2nd generation Enhancer, Kabob has lots of thickness and length of spine typical of the GPS sons.
- His 2 year old dam is an Eagle daughter that is an attractive, good milking female and out of a Gold Dam.

P 56 PRK KINGDOM 1062K \$3,400

Hom Black	Polled	1/2 AN 3/8 SA 1/8 SM			reg: P751356	
Born	BW	205 Wt	Index	11/5 Wt	WDA	Frame
3/7/2022	90	754	105	810	3.33	6.0

MSR TENACITY 3733A
PRK GPS 728G
 PRK HICKORY 728E

CONNEALY CONFIDENCE 0100
 MSR 1206Y OF 9325W SBET
 SRS BULLSEYE 592B
 PRK HICKORY 418B

SRS SEQUEL 0122S
PRK MALIBU 062X
 PRK MALIBU 252M

CONNEALY DANNY BOY
 SRS AURA 0122L
 SRS GRANITE 9336G
 9512 AN/SM DAM

Dam's Production	
BW	11 @ 89
WW	11 @ 104
Udder	5-7

CED	BW	WW	YW	MWW	Milk	Marb	REA	Doc	Stay
+12	+0.1	+59	+87	+55	+26	+0.1	+0.62	+14	+14

Quad Polled

- Lots of maternal strength bred into this bull.
- His 12 year old dam is very long with tremendous volume and lots of milk.
- She is a Gold Dam and the dam of PRK GPS has also reached Gold Dam status.

P 57 PRK KIRBY 694K \$3,000

Hom Black	Polled	1/2 AN 3/8 SA 1/8 SM			reg: P751358	
Born	BW	205 Wt	Index	11/5 Wt	WDA	Frame
2/27/2022	84	711	99	856	3.41	5.4

MSR TENACITY 3733A
PRK GPS 728G
 PRK HICKORY 728E

CONNEALY CONFIDENCE 0100
 MSR 1206Y OF 9325W SBET
 SRS BULLSEYE 592B
 PRK HICKORY 418B

PRK BONSAI 993B
PRK JASMINE 694D
 PRK JASMINE 394A

SRS ZEUS 0509Z
 PRK HONOR 993W
 SRS YAKIMA 9118YY
 PRK JASMINE 194Y

Dam's Production	
BW	5 @ 87
WW	5 @ 101
Udder	8-8

CED	BW	WW	YW	MWW	Milk	Marb	REA	Doc	Stay
+15.5	-1.9	+58	+81	+50	+21	+0.1	+0.52	+10	+17

★ Potential Heifer Bull • Quad Polled

- Moderate, square made lower % Simmental Enhancer.
- The Jasmine cow is very deep bodied with great extension and very easy keeping.



LOT 58

P 58 PRK KICKBACK 818K \$3,800

Hom Black	Polled	5/8 SA 1/4 AN 1/8 SM			reg: P751359	
Born	BW	205 Wt	Index	11/5 Wt	WDA	Frame
3/11/2022	94	807	113	864	3.62	6.1

MSR TENACITY 3733A
PRK GPS 728G
 PRK HICKORY 728E

CONNEALY CONFIDENCE 0100
 MSR 1206Y OF 9325W SBET
 SRS BULLSEYE 592B
 PRK HICKORY 418B

DJF DAYBREAK 264D
PRK SKITTLES 818F
 PRK SKITTLES 408B

DJF ZODIAC 941Z
 DJF ZOEY 264Z
 SRS ULTIMATE 0730X
 PRK SKITTLES 128Y

Dam's Production	
BW	3 @ 82
WW	3 @ 111
Udder	7-6

CED	BW	WW	YW	MWW	Milk	Marb	REA	Doc	Stay
+13	-0.3	+65	+92	+54	+22	+0	+0.65	+5	+12

Quad Polled

- Kickback will be one you notice and admire for his thickness, definition, and shape along with great length.
- His dam is a bigger, high capacity, heavy milking female out of one of our favorite Purebred Salers cows.



LOT 59

P 59 PRK KEY 9157K \$3,400

Hom Black	Polled	3/8 SA 3/8 AN 1/4 SM			reg: P751161	
Born	BW	205 Wt	Index	11/5 Wt	WDA	Frame
2/23/2022	89	712	99	856	3.36	5.6

KEYS RETRIBUTION 18B
MJB VELOCITY 414E
 MJB MARY 134C

KEYS DIRECT FIRE 18Y
 MISS KEY KRISTIN 57Y
 MAC QUARTERBACK 58Y
 MJB YELLOW ROSE 138Z
 HOOK'S BLACK HAWK 50B
 HOOK'S CRYSTAL 1C
 JBS LANCELOT JR 81L
 PRK GINA 9157G
 PRK GINA 857U

Dam's Production	
BW	2 @ 84
WW	1 @ 99
Udder	9-9

CED	BW	WW	YW	MWW	Milk	Marb	REA	Doc	Stay
+12.3	-1.7	+64	+97	+45	+13	+0.4	+0.7	+15	+19

Quad Polled

- An Enhancer that is very clean made and correct in his design.
- Dam is a young Eagle Daughter who is moderate framed with a great udder and a part of the prolific Gina cow family.

ENHANCER BULLS





P 60 PRK KIA 465K \$3,400

Red	Polled	3/4 SA 1/4 AN			reg: P751125		
Born	BW	205 Wt	Index	11/5 Wt	WDA	Frame	
3/7/2022	100	755	106	860	3.54	6.0	

MAC CENTURION 240X MAC ANDERS 29A WJM URIAH 249U	D CENTURY MAC RISSA 379R MAC LENNOX 314L WJM PETRA 117P	<i>Dam's Production</i> BW 7 @ 98 WW 7 @ 101 Udder 8-9
SRS SPARTACUS 0670Z PRK ROBERTA 465B PRK ROBERTA 271Z	SRS XTRA 0347X SRS SEIKO 0670S SRS XPERT 0881X PRK ROBERTA 071X	

CED	BW	WW	YW	MWW	Milk	Marb	REA	Doc	Stay
+15.4	+0.4	+59	+83	+48	+18	+0	+0.61	+10	+22

Quad Polled

- A smooth sided and balanced profiling higher percentage Salers bull.
- The Roberta cow is as thick made and balanced as any cow in the herd.
- She has an ideal udder structure and is extremely easy fleshing and a maternal sister to lot #28.

P 61 PRK KASH 0154K \$3,400

Red	Polled	3/4 SA 1/4 AN			reg: P751226		
Born	BW	205 Wt	Index	11/5 Wt	WDA	Frame	
2/18/2022	80	662	93	776	2.98	5.0	

MAC ANDERS 29A PRK GOLD RUSH 213G PRK MONTANA 213Z	MAC CENTURION 240X WJM URIAH 249U TSB OUTBACK 132U PRK MONTANA 813U	<i>Dam's Production</i> BW 1 @ 80 WW 1 @ 93 Udder 8-8
SRS EL DORADO 4147E PRK HOPE 0154H PRK HOLLY 454B	SRS BOTTOM LINE 978B SRS PONY TAIL 4147B SRS UNITED 0653U PRK HOLLY 264Z	

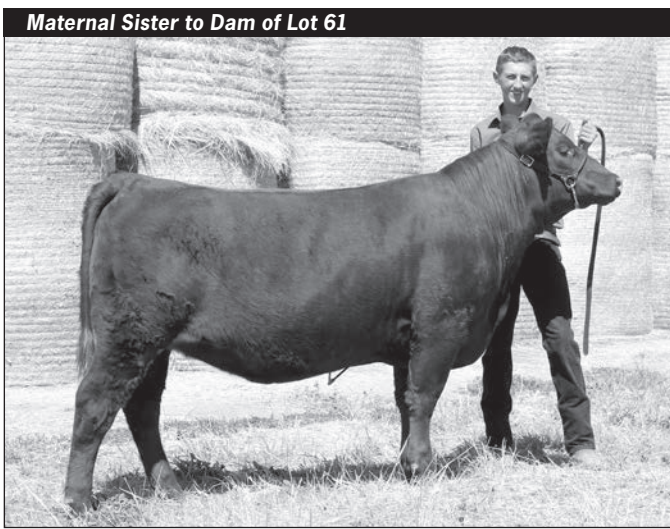
CED	BW	WW	YW	MWW	Milk	Marb	REA	Doc	Stay
+17.7	-3	+43	+65	+42	+21	+0	+0.59	+20	+19

★★★★ Potential Heifer Bull • Quad Polled

- Kash has an extremely attractive design and good thickness for a heifer bull, along with a gentle demeanor.
- His good milking and deep bodied mother is out of our daughter, Deana's, old show cow.
- Holly has produced some great bulls and females and has a super sweet personality.



PRK Headliner 465H • March, 2021



PRK Jewel 154J • August, 2022



Sire of Lots 61 and 62



PRK Gold Rush 213G

P 64 PRK KENDRICK 504K \$3,000

Red		Polled		3/4 SA 1/4 AN		reg: P751252			
Born	BW	205 Wt	Index	11/5 Wt	WDA	Frame			
3/10/2022	94	749	105	830	3.46	5.9			
SRS ELEMENT 4154E		SRS BENCHMARK 8105B		SRS MORGAN 4154B		Dam's Production			
SRS GUIDELINE 7126G		SRS BOTTOM LINE 978B		SRS LACE 3179A		BW	6 @ 93		
SRS LACE 7126E		SRS YUMA 072Y		DJP WHISKEY RIVER 9006W		WW	6 @ 106		
PRK DUTCHESS 504C		PRK DUTCHESS 314N		SRS RUSSETT 0305N		Udder	6-6		
				GGT P HEAVY DUTY 100J					
				LCY DUTCHESS 164L					
CED	BW	WW	YW	MWW	Milk	Marb	REA	Doc	Stay
+8.8	-0.7	+67	+97	+55	+21	-0.1	+0.7	+19	+17

Quad Polled

- Another high volume SRS Guideline son.
- His mother is a bigger, very long and thick, high performing female who has reached Gold Dam status.

P 62 PRK KOMATSU 520K \$3,400

Red		Polled		PUREBRED		reg: P751231			
Born	BW	205 Wt	Index	11/5 Wt	WDA	Frame			
2/24/2022	102	755	106	922	3.63	6.8			
MAC ANDERS 29A		MAC CENTURION 240X		WJM URIAH 249U		Dam's Production			
PRK GOLD RUSH 213G		TSB OUTBACK 132U		PRK MONTANA 813U		BW	6 @ 91		
PRK MONTANA 213Z		SRS WDA 270W		SRS RAINBIRD 0744T		WW	6 @ 102		
SRS CRIMSON TIDE 0744Z		PRK CRIMSON 520C		PRK CRIMSON 305A		Udder	8-8		
CED	BW	WW	YW	MWW	Milk	Marb	REA	Doc	Stay
+13.6	+0.3	+59	+85	+49	+19	-0.1	+0.81	+16	+17

Quad Polled

- Here is a high performing, very long sided, bigger bull who will sire calves that Salers have been appreciated for.
- He has a thick, attractively made dam who is one of our best Purebred females.
- PRK Gold Rush sold to Silver Spur Salers in our 2019 sale and we continue to use him in our AI program.

P 65 PRK KNICKS 501K \$3,000

Hom Black		Polled		3/4 SA 1/4 AN		reg: P751202			
Born	BW	205 Wt	Index	11/5 Wt	WDA	Frame			
2/26/2022	96	696	97	840	3.33	5.9			
SRS BULLSEYE 592B		SOO LINE MOTIVE 9016		SRS JULIET 0584R		Dam's Production			
PRK FLINT 198F		SRS WANTED 0218W		PRK VIRGINIA 898U		BW	6 @ 90		
PRK VIRGINIA 198Y		TSB OUTBACK 132U		SRS AURA 0809U		WW	6 @ 96		
SRS OUTBACK 0809X		PRK HEAVENLY 501C		MAC MINDBENDER 98M		Udder	6-7		
		PRK HEAVENLY 631S		PRK HEAVENLY 011K					
CED	BW	WW	YW	MWW	Milk	Marb	REA	Doc	Stay
+13.7	-1	+50	+69	+39	+14	+0	+0.59	+18	+15

Quad Polled

- A higher percentage Salers with a very good top and thickness throughout.
- Dam is an easy fleshing, good milking, very deep bodied Purebred female.

P 63 PRK KNOCKOFF 014K \$3,400

Black		Polled		3/4 SA 1/4 AN		reg: P751246			
Born	BW	205 Wt	Index	11/5 Wt	WDA	Frame			
3/15/2022	88	761	106	814	3.46	4.9			
SRS ELEMENT 4154E		SRS BENCHMARK 8105B		SRS MORGAN 4154B		Dam's Production			
SRS GUIDELINE 7126G		SRS BOTTOM LINE 978B		SRS LACE 3179A		BW	1 @ 88		
SRS LACE 7126E		MAC DECADE 140D		MAC YORANN 258Y		WW	1 @ 106		
MAC FRONTIER 184F		SRS YUMA 072Y		PRK HANNAH 016X		Udder	7-9		
PRK HANNAH 014H		PRK HANNAH 516C							
CED	BW	WW	YW	MWW	Milk	Marb	REA	Doc	Stay
+12.3	-1.4	+60	+86	+50	+20	+0	+0.62	+18	+16

Quad Polled

- A very deep sided, high volume moderate 3/4 Salers bull.
- His 2 year old dam is a well made female with a great amount of milk.

P 66 PRK KIEV 800K \$3,000

Hom Black		Polled		PUREBRED		reg: P751308			
Born	BW	205 Wt	Index	11/5 Wt	WDA	Frame			
3/6/2022	82	731	102	762	3.12	6.3			
MAC FRONTIER 184F		MAC DECADE 140D		MAC YORANN 258Y		Dam's Production			
PRK HONDO 213H		TSB OUTBACK 132U		PRK MONTANA 813U		BW	3 @ 79		
PRK MONTANA 213Z		SRS OUTBACK 0809X		PRK BIRCH 020X		WW	3 @ 100		
PRK CASINO 020C		SRS NOKIA 9722N		PRK FLICKA 730T		Udder	8-8		
PRK FLICKA 800F		PRK FLICKA 930W							
CED	BW	WW	YW	MWW	Milk	Marb	REA	Doc	Stay
+16	-1.7	+51	+69	+46	+21	-0.1	+0.77	+6	+17

***** Potential Heifer Bull • Quad Polled**

- This is a very long spined bull with a good top.
- His grand dam did a great job for many years.
- PRK Hondo is a maternal brother to PRK Gold Rush that we have been using clean up for a couple of years.

Parke Ranch Bred Sale Heifers

These Bred heifers (all but 2) were born, developed, and bred here on Parke Ranch. They were weaned last Fall on October 1st and ran on meadow regrowth for 45 days. They were developed through the winter on long stem grass/alfalfa hay. They have not received any concentrates or supplements other than mineral. These heifers sell as commercial heifers even though many of them are registered females and siblings to bulls selling in this and past sales. They are bred to calving ease sires we use in our herd for both AI and clean-up bulls. You can find most of their service sires listed following the heifer lots or in the Reference Sire section before the bull lots. They were ultra-sounded for calving dates on August 11th after a 65-day breeding season. We have sorted the heifers into smaller groups by calving dates, breed, and phenotype. They will sell in the silent auction along with the bulls. The heifer groups have base prices listed with each group on a per head basis. The bidding will proceed with \$25 per head bid increases until the close of the sale at 2 pm on Dec. 14th, in the same format as the bulls. We would ask that you make arrangements to pick up your heifers by the end of the year. A video of the heifer lots will be available on our website, or you may come at any time to view the heifers.

Group A

\$1750

Number	Sire	Color	% Salers	Bred To	Due Date	Calf %	Average WT
384Y	SRS General	Black	1/2	SRS Guideline	2/11	1/2	10/28/22
680Y	MAC Enduro	Black	1/2	PRK Jury	2/18	1/2	1175 lbs
767G	DJF Garner	Black	1/2	PRK Flint	2/11	1/2	
773Y	PRK Duracell	Black	1/2	SRS Guideline	2/11	1/2	
898Y	SRS Forward	Black	1/2	PRK Jury	2/12	1/2	

Group B

\$1700

Number	Sire	Color	% Salers	Bred To	Due Date	Calf %	Average WT
036G	GGT Final Choice	Black	5/8	SRS Guideline	2/19	5/8	10/28/22
062G	MAC Frontier	Black	3/4	PRK Jury	2/18	5/8	1150 lbs
225Y	MAC Frontier	Black	PB	PRK Jury	2/20	3/4	
409G	MAC Anders	Black	PB	PRK Flint	2/9	3/4	
509G	MAC Anders	Black	PB	PRK Flint	2/11	3/4	
516Y	MAC Frontier	Black	PB	SRS Guideline	2/9	3/4	

Group C

\$1700

Number	Sire	Color	% Salers	Bred To	Due Date	Calf %	Average WT
386Y	MAC Enduro	Black	1/2	PRK Flint	2/11	1/2	10/28/22
428G	GGT Final Choice	Black	5/8	SRS Guideline	2/19	5/8	1080 lbs
461Y	Dundee/Gladiator	Black	5/8	PRK Halfback	2/18	5/8	
776G	Dundee/Gladiator	Black	1/2	PRK Jury	2/18	1/2	
830Y	Dundee/Gladiator	Black	5/8	PRK Jury	2/18	5/8	
987Y	PRK Flint	Black	1/2	MAC Judson	2/19	1/2	

BRED HEIFERS

Group D

\$1650

Number	Sire	Color	% Salers	Bred To	Due Date	Calf %	Average WT
D126Y	AVS Mr Deeds	Black	1/2	SRS Cinch	2/18	1/2	10/28/22
1981G	SRS Forward	Black	1/2	PRK Halfback	2/11	1/2	1030 lbs
390G	SRS General	Black	1/2	PRK Halfback	2/19	1/2	
555Y	PRK Duracell	Black	1/2	MAC Judson	2/12	1/2	
805G	Dundee/Gladiator	Black	3/4	PRK Halfback	2/18	5/8	

Group E

\$1700

Number	Sire	Color	% Salers	Bred To	Due Date	Calf %	Average WT
1974G	PRK Flint	Black	1/2	PRK Jury	2/11	1/2	10/28/22
337G	PRK Gametime	Black	1/2	SRS Cinch	2/19	1/2	1005 lbs
447G	SRS General	Black	1/2	PRK Governor	2/20	1/2	
587G	PRK Fullback	Black	5/8	SRS Guideline	2/13	5/8	
996G	GGT Final Choice	Black	5/8	PRK Halfback	2/19	5/8	

Group F

\$1750

Number	Sire	Color	% Salers	Bred To	Due Date	Calf %	Average WT
155Y	PRK GPS	Black	Enhancer	PRK Halfback	2/15	Enhancer	10/28/22
199G	Hooks Full Figures	Black	Enhancer	SRS Guideline	2/25	Enhancer	1100 lbs
679Y	PRK GPS	Black	Enhancer	SRS Guideline	2/10	Enhancer	
891Y	PRK GPS	Black	Enhancer	PRK Halfback	2/18	Enhancer	
932G	SDS Graduate	Black	Enhancer	PRK Hercules	2/18	Enhancer	

Group G

\$1700

Number	Sire	Color	% Salers	Bred To	Due Date	Calf %	Average WT
116B	MAC Frontier	Red	PB	MAC Judson	2/19	3/4	10/28/22
544Y	MAC Frontier	Red	3/4	PRK Halfback	2/18	5/8	1030 lbs
722G	MAC Frontier	Red	7/8	PRK Halfback	3/2	3/4	
852Y	PRK Fenway	Red	1/2	PRK Governor	2/19	1/2	

BRED HEIFERS

Group H

\$1700

Number	Sire	Color	% Salers	Bred To	Due Date	Calf %	Average WT
D107Y	TSB Rival	Black	1/2	PRK Flint	3/7	1/2	10/28/22
115G	PRK Gold Rush	Black	PB	SRS Jury	3/10	3/4	1050 lbs
387Y	SRS Guideline	Black	1/2	PRK Halfback	3/4	1/2	
864Y	PRK Duracell	Black	1/2	PRK Halfback	3/14	1/2	
901Y	MJB Velocity	Black	3/4	SRS Jury	3/7	5/8	
986Y	PRK Flint	Black	1/2	PRK Halfback	3/3	1/2	

Group I

\$1650

Number	Sire	Color	% Salers	Bred To	Due Date	Calf %	Average WT
1816G	DJF Garner	Black	1/2	SRS Guideline	3/16	1/2	10/28/22
1915Y	SRS Guideline	Black	1/2	PRK Halfback	3/27	1/2	1020 lbs
1990G	SRS Guideline	Black	1/2	PRK Halfback	3/29	1/2	
543Y	SRS Duracell	Black	1/2	PRK Halfback	3/28	1/2	
718G	MAC Earthquake	Black	7/8	PRK Jury	3/24	3/4	

Group J

\$1700

Number	Sire	Color	% Salers	Bred To	Due Date	Calf %	Average WT
603Y	MAC Frontier	Red	PB	PRK Jury	3/29	3/4	10/28/22
732G	PRK Gunslinger	Red	1/2	SRS Guideline	3/27	1/2	1125 lbs
853G	PRK Gametime	Red	1/2	MJB Headliner	3/29	3/4	

Group K

\$1650

Number	Sire	Color	% Salers	Bred To	Due Date	Calf %	Average WT
372Y	SRS General	Black	1/2	PRK Flint	4/9	1/2	10/28/22
478G	PRK Flint	Black	1/2	MAC Judson	3/30	1/2	1135 lbs
667G	SRS Guideline	Black	1/2	MAC Judson	4/13	1/2	
9124G	PRK GPS	Black	Enhancer	PRK Halfback	4/15	Enhancer	

BRED HEIFERS

PRK Jury 976J



Black		Polled		1/2 SA 1/2 AN			reg: 744423		
CED	BW	WW	YW	MWW	Milk	Marb	REA	Doc	Stay
+16.5	-5.5	+49	+69	+45	+21	+0.1	+0.38	+18	+17

MAC F1 JUDSON 96J



Red		Polled		1/2 SA 1/2 AR			reg: 748742		
CED	BW	WW	YW	MWW	Milk	Marb	REA	Doc	Stay
+14.8	-2.3	+64	+93	+55	+24	-0.2	+0.36	+13	+15

PRK HALFBACK 440H



Hom Black		Polled		5/8 SA 3/8 AN			reg: 737482		
CED	BW	WW	YW	MWW	Milk	Marb	REA	Doc	Stay
+15.1	-1.1	+59	+80	+46	+17	+0.1	+0.43	+18	+18

SRS JUDGE 7135J



Hom Black		Polled		1/2 SA 1/2 AN			reg: 745635		
CED	BW	WW	YW	MWW	Milk	Marb	REA	Doc	Stay
+12.6	-0.6	+82	+122	+66	+25	+0.1	+0.71	+9	+13

SRS CINCH 0778C



Black		Hom Polled		1/2 SA 1/2 AN			reg: 705321		
CED	BW	WW	YW	MWW	Milk	Marb	REA	Doc	Stay
+19.3	-3.0	+55	+88	++42	+15	-0.1	+0.35	+20	+19

PRK JACUZZI 971J



Black		Polled		1/2 SA 3/8 AN 1/8 AR			reg: 744421		
CED	BW	WW	YW	MWW	Milk	Marb	REA	Doc	Stay
+6.0	+0.3	+68	+105	+48	+14	+0.2	+0.65	+18	+20



We Believe In . . . Will Represent Honestly . . . And Stand Behind Our Cattle!

Parke Ranch

2022 Maternal Power Production Sale

SILENT AUCTION FORMAT

December 6th thru 14th, 2022

At the Ranch – Drummond, Montana



Parke Ranch
Eaf & Tiffany Parke Family
7 Peppergrass Lane
Drummond, MT 59832

FIRST CLASS

US Postage
Paid
Ballyhoo Printing
59457



FIRST CLASS