

Parke Ranch

2023 Maternal Power Production Sale

SILENT AUCTION FORMAT

December 5th thru 13th, 2023

At the Ranch – Drummond, Montana



Salers, Simmental, and Angus Genetics

145 Head Sell!

75 Bulls

6 Heifers Calves

65 Bred Females

ParkeRanch.com



Eaf & Tiffany Parke Family

7 Peppergrass Lane
Drummond, MT 59832

Home 406-288-3573
Eaf cell 406-240-4167
Joseph cell 406-396-0369

parkeranch@gmail.com

www.ParkeRanch.com

Our family welcomes you to our 8th annual Maternal Power Production Sale. It is hard to believe how fast this year has gone and how the years add up so quickly. We are so grateful for you taking time to evaluate our sale offering. We appreciate the friendships we have developed through our interactions in the seedstock business. We value each of you as customers, supporters, or fellow livestock producers. We are truly passionate about striving to improve our cattle herd and are thrilled when anyone takes time to evaluate our livestock. We welcome any feedback or suggestions you may have.

We are very excited about our sale offering this year. We will have 75 bulls in this year's sale which were selected and sorted from 270 male calves born on our place. They have been sorted for performance, phenotype, structure, soundness, disposition, and dam quality. This is our entire bull crop as we didn't send any bulls to Midland this year for the first time in over 20 years. We again will be offering 50 bred heifers as well as 15 young bred cows in our production sale. They were bred, born, and raised here on our ranch. They will sell as commercial females even though most are registered. They contain the same genetics and are bred to the same herd sires as the females in our herd. New this year we are offering 6 top end registered heifer calves. They are registered with the American Sellers Association and were selected to represent what we are breeding for in our program. They should make great producing females while also being stylish and attractive enough to work well for a young person looking to be competitive in the show ring.

This year has been a welcomed record setting year in regards to the cattle markets and everything seems pointed towards a continued positive trend for several years to come. Most people's feed supply has seen improvement with the better moisture this past year. This fall we were able to sell our steer calves for over \$1825 per head and received better than \$3,000 for a couple of old bulls we took to the sale yard! The cattle in this year's sale should give you unprecedented levels of return for your investment over their lifetime of production!

One of the very best aspects of being involved in Agriculture and living in rural America is the opportunity to be near and work with our family on a frequent basis. We are blessed to be entirely a family run operation. We are able to do everything involved (maybe more than some want) from the calving, Al'ing, irrigating, farming, haying, clipping, picturing, and cattle work year around. We know the sale offering very well and will do our best to answer any questions you have and represent the cattle in an honest manner. We look forward to visiting more this coming December and welcome you to call or stop by at your convenience. We greatly appreciate your trust in us as a seedstock producer and will do our best to maintain that trust!

Thank you,

The Parke Family



Parke Ranch

2023 Maternal Power Production Sale

Silent Auction December 5 thru 13, 2023 At the Ranch - Drummond, Montana

SALE PROCEDURE

- Cattle will sell in a silent auction format with bidding opening at noon on Tuesday Dec. 5th, 2023.
- Bulls and heifer calves have a starting base price which is listed in the catalog. Bred females will sell in small groups with a starting base price on a per head basis.
- Bidders may place a bid at base price on any lot without a bid or raise the bid by a minimum of \$100 on any bull or heifer calf and \$25 on any bred female lots with a current bid. Bidding will be open until the sale closes on Wednesday Dec. 13th at 2 pm (Mountain Time).
- Bids can only be placed with Eaf or Joseph via phone, text, email, or in person at any time during the sale period.
- Any lots receiving an increasing bid on Wednesday Dec. 13th may have an oral bid off at the close of the sale. This would involve the last bidder prior to the 13th and any bidders on the 13th, if they wish to continue bidding. Bid offs will be handled in order of price and as quickly as the contending bidders can be reached after 2 pm.
- Any lots without a bid during the 13th are considered sold to the high bidder when the sale closes at 2 pm on the 13th.
- Any lots without a base bid will be available for sale at the base price at the conclusion of the sale on a first come basis.
- We would encourage bidding early in the sale period to reduce the number of bid offs and to allow you to move to other lots.
- A spreadsheet on our website at www.parkeranch.com will be updated frequently with current bids or you may request update notifications if your bidding status changes.

SALE TERMS AND DETAILS

- Females need to be picked up by the buyers by Dec. 31st.
- 1/2 of purchase price is due at sales conclusion with the balance due at delivery.
- Bulls will be fed free of charge and at our risk until delivery, beginning around March 20th.
- Bulls will be delivered free of charge up to 500 miles with any additional mileage at cost.
- All bulls are guaranteed for disposition, structural soundness, and fertility for the first breeding season.
- We will notify you as soon as possible if any bulls are injured in our care or do not pass the semen test. You may select a replacement bull if one is available, future credit, or receive a refund of your initial payment.
- Parke Ranch is retaining 1/3 semen interest on all sale bulls and will collect semen before delivery, at our cost, on any we desire to use in our AI program. You have full salvage value.
- A volume discount of 5% will be given on any purchase of 5 or more bulls.

BULL HISTORY & DEVELOPMENT

- Bulls had actual birthweights taken with a scale at birth.
- They have been raised without creep. Just milk and grass.
- Sale bulls are from the top 30% of our male calves. They were sorted many times based on dam quality, birthweight, disposition, confirmation, performance, and soundness.
- Bulls were weaned on October 6th and are being fed free choice long stem mixed hay and 7 lbs of bull challenger pellets.
- They will be fed for a 2.8 lbs/day gain to grow them out sufficiently while ensuring their soundness and longevity.
- Bulls will be semen tested and vaccinated in March and be ready for turn out when delivered.
- Fall vaccinations included: Vision 8, Pyramid 5, Autogenous Type A, Autogenous Respiratory, Multi-Min, and Footrot. Spring vaccinations: Vision 8, Pyramid 5, Reprostar VL5 HB, & Footrot.

CATALOG DETAILS

- All double black bulls were DNA tested for coat color and those found to be homozygous black are designated in the catalog.
- Lot base prices are found in the upper right hand corner.
- Dams average on calves birthweights and weaning indexes are listed along with her udder score (the first digit represents her udder suspension and the second digit is teat size, with 9 being the best and 1 the worst).
- The listed EPDs are from the American Salers Association.
- Potential Heifer bulls are ranked. (4★ being the most reliable)

CATTLE INSPECTION

- Cattle are available for inspection at any time now or during the sale period. If you desire to call ahead we can make accommodations to improve your viewing experience.
- Have lunch on us. Plan a little extra time when you come to look at cattle and have a famous Parkers Hamburger on us at the restaurant in Drummond (they are closed Sun. & Mon.).
- Exit interstate 90 at Drummond and head south on Hwy #1. After 2.6 miles turn east on Mullan Road and then travel 1.5 miles and our ranch is on the left.

ADDITIONAL INFORMATION

- A link to a video of the individual bulls, heifer calves, and bred females groups will be up on our website before Dec. 1st.
- We will have updated weights and scrotal measurements on all sale bulls at the start of the sale. These will be available on our website or when you come to view the cattle.



We Believe In . . . Will Represent Honestly . . . And Stand Behind Our Cattle!

P Reference Sire PRK JACUZZI 971J

Black Hom Polled 1/2 SA 1/2 AN reg: 744421

KEYS RETRIBUTION 18B
MRB VELOCITY 414E
 MRB MARY 134C
 MRB GLADIATOR 305B
PRK GLASGOW 971G
 PRK GLASGOW 671D

KEYS DIRECT FIRE 18Y
 MISS KEY KRISTIN 57Y
 MAC QUARTERBACK 58Y
 MRB YELLOW ROSE 138Z
 SRS SPARTACUS 0670Z
 *MRB BARBIE 126Z
 PRK ACE 081A
 PRK GLASGOW 467B

CED	BW	WW	YW	MWW	Milk	Marb	REA	Doc	Stay
+2.6	+2.5	+76	+116	+52	+14	+0.2	+0.73	+23	+15

PRK JACUZZI 971J



P Reference Sire PRK FLINT 198F

Black Polled 1/2 SA 3/8 AN 1/8 AR reg: 724634

SOO LINE MOTIVE 9016
SRS BULLSEYE 592B
 SRS JULIET 0584R
 SRS WANTED 0218W
 ***PRK VIRGINIA 198Y**
 PRK VIRGINIA 898U

HF KODIAK 5R
 TLA BEAUTY 5R
 MAC LANSING 302L
 SRS JULIET 9609F
 S A V 004 DENSITY 4336
 SRS JULIET 0218M
 SRS NOKIA 9722N
 PRK VIRGINIA 298M

CED	BW	WW	YW	MWW	Milk	Marb	REA	Doc	Stay
+20.1	-5.7	+45	+62	+32	+10	+0.0	+0.42	+28	+14

PRK FLINT 198F



P Reference Sire SRS JUDGE 7135J

Hom Black Hom Polled 1/2 SA 1/2 AN reg: 745635

SRS ENGAGE 4221E
SRS GOVERNOR 4111G
 SRS LACE 4111B
 SRS BENCHMARK 8105B
SRS AURA 7135E
 SRS AURA 4152B

SITZ BRIGADE 12074
 SRS MANOR 4221B
 SRS YUMA 072Y
 *SRS LACE 0814U
 SRS ZEUS 0509Z
 *SRS SHANNON 8105U
 SRS WDA 575Z
 SRS AURA 0933W

CED	BW	WW	YW	MWW	Milk	Marb	REA	Doc	Stay
+11.4	+0.2	+96	+140	+70	+22	+0.1	+0.81	-4	+14

SRS JUDGE 7135J



P Reference Sire MAC F1 JUDSON 96J

Red Hom Polled 1/2 SA 1/2 AR reg: 748742

LSF SAGA 1040Y
PIC CINCH 4126
 TKP BONNE BEL 110
 MAC ATOMIC FORCE 36A
MAC GEMMA 374G
 *MAC ZAILA 109Z

BECKTON EPIC R397 K
 LSF MINOLA T7172 W9041
 HXC CONQUEST 4405P
 TKP BONNE BEL 9031
 MAC CENTURION 240X
 *MAC SHEILA 208S
 MAC TORRINGTON 139T
 MAC REBA 150R

CED	BW	WW	YW	MWW	Milk	Marb	REA	Doc	Stay
+12.5	-1.5	+66	+97	+57	+24	-0.2	+0.35	+21	+17

P Reference Sire JSR CHEMISTRY 921

Black Hom Polled 3/4 SA 1/4 AN reg: 733012

TSB HUNTER 10C
ECR ELECTRON 712E OF 48T
 OPP BLACK LADY 48T
 CCC/MARX UPWARD 0512
 ***JSR MS ROCKY 338A**
 JSR MS JAMACA 762

ASHLYNN'S ACE
 TSB LANEY 95A
 GGT P BLK TRIFECTA 383L
 *OPP BLACK LADY 48P
 SITZ UPWARD 307R
 SITZ ERICA EVERELDA 2578
 CMC MR JAMACA M44K
 JSR MS PACIFIC 1116

CED	BW	WW	YW	MWW	Milk	Marb	REA	Doc	Stay
+9.2	+3.0	+77	+117	+52	+13	-0.2	+0.74	+14	+10

MAC F1 ENDURO 43E



P Reference Sire MAC F1 ENDURO 43E

Hom Black Hom Polled 1/2 SA 1/2 AN reg: 720903

CONNEALY CONSENSUS 7229 CONNEALY CONSENSUS
CONNEALY COMRADE 1385 BLUE LILLY OF CONANGA 16
 HAPPY GEE OF CONANGA 919 G A R NEW DESIGN 5050
 HAP GINA OF CONANGA 260 4965
 S NEBRASKA 330N D LIMITED EDITION 179L
MAC CARINA 176C *S BLACK LADY 50K
 MAC WILLOW 134W MAC LENNOX 314L
 MAC KESIA 322K

CED	BW	WW	YW	MWW	Milk	Marb	REA	Doc	Stay
+11.2	+0.2	+71	+107	+54	+18	+0.3	+0.53	+14	+17

SRS GUIDELINE 7126G



P Reference Sire SRS GUIDELINE 7126G

Black Polled 1/2 SA 1/2 AN reg: 732117

SRS BENCHMARK 8105B SRS ZEUS 0509Z
SRS ELEMENT 4154E *SRS SHANNON 8105U
 SRS MORGAN 4154B PRK YELLOWSTONE 966Y
 *SRS MORGAN 0938W
 SRS BOTTOM LINE 978B SOO LINE MOTIVE 9016
***SRS LACE 7126E** SRS JULIET 0584R
 SRS LACE 3179A SRS UNREAL 0151U
 *SRS LACE 8114U

CED	BW	WW	YW	MWW	Milk	Marb	REA	Doc	Stay
+11.3	-4.1	+58	+81	+49	+21	+0.1	+0.44	+25	+13

PRK GPS 728G



P Reference Sire PRK GPS 728G

Hom Black Hom Polled 3/8 AN 3/8 SA 1/4 SM reg: 730893

CONNEALY CONFIDENCE 0100 CONNEALY TOBIN
MSR TENACITY 3733A BECKA GALA OF CONANGA 8281
 MSR 1206Y OF 9325W SBET DIKEMANS SURE BET
 MSR 9325W OF 2094 VOY
 SRS BULLSEYE 592B SOO LINE MOTIVE 9016
***PRK HICKORY 728E** SRS JULIET 0584R
 PRK HICKORY 418B OPP SABER 847U
 *PRK HICKORY 823U

CED	BW	WW	YW	MWW	Milk	Marb	REA	Doc	Stay
+16.0	-1.0	+62	+88	+50	+19	+0.1	+0.52	+14	+16

P Reference Sire SRS GENERAL 4180G

Hom Black	Hom Polled	1/2 SA	1/2 AN	reg:					
				732124					
CONNEALY GREELEY CONNEALY CONFIDENCE 0100 SRS DYNASTY 667D PRECIOUS OF CONANGA 0484 SRS FINICKY 0838U CRO SURVEY 615S *SRS FINICKY 9809H SRS GUNSLINGER 605Z TOMBSTONE 050 SRS JULIET 4180B BASIN JOYCE S474 SRS JULIET 0218M SRS FOCUS 9403F SRS JULIET 9505E									
CED	BW	WW	YW	MWW	Milk	Marb	REA	Doc	Stay
+11.1	+1.7	+78	+110	+54	+15	+0.2	+0.63	-8	+17

P Reference Sire PRK JURY 976J

Black Polled 1/2 SA 1/2 AN reg: 744423

SRS ELEMENT 4154E SRS BENCHMARK 8105B
SRS GUIDELINE 7126G SRS MORGAN 4154B
 SRS LACE 7126E SRS BOTTOM LINE 978B
 *SRS LACE 3179A
 SRS UNITED 0653U SRS SAINT 0218S
PRK LADY 976G *SRS STARR 0653S
 PRK LADY 766E MJB ELWAY 322C
 PRK LADY 466P

CED	BW	WW	YW	MWW	Milk	Marb	REA	Doc	Stay
+19.1	-7.2	+47	+64	+43	+20	+0.1	+0.38	+13	+17

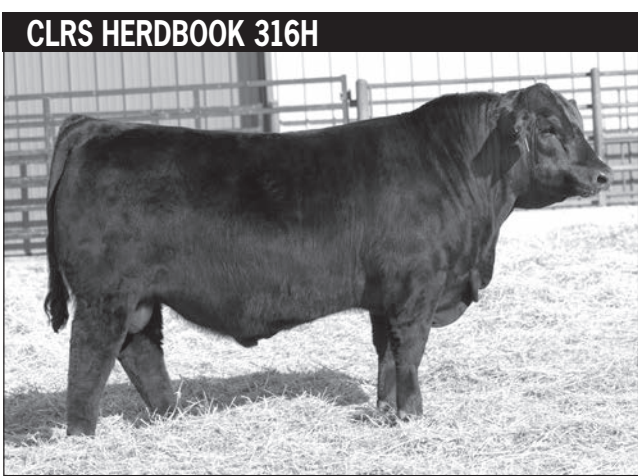
P Reference Sire GW TRIPLE CROWN 018C

Hom Black		Hom Polled		5/8 SM	3/8 AN	reg: 2954741				
GW PREMIUM BEEF 021TS		G A R US PREMIUM BEEF								
J BAR J NIGHTRIDE 225Z		GW MISS LUCKY CHARM 410P								
J BAR J MISS ND 793X		GW LUCKY BOY 252U								
		793T								
GW PREDESTINED 701T		G A R PREDESTINED								
GW MISS GPRD 359A		GW MISS LUCKY STRIKE 363								
GW MISS PREM BEEF 240Y		GW PREMIUM BEEF 021TS								
		GW MISS EMBLAZON 751U								
CED	BW	WW	YW	MWW	Milk	Marb	REA	Doc	Stay	
+14.9	-2.0	+90.6	+150.7	+62.9	+17.6	+0.71	+1.25	+23.1	+16.6	



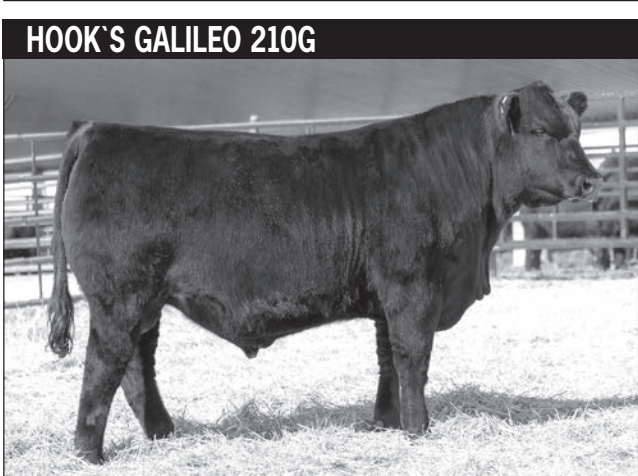
P Reference Sire CLRS HERDBOOK 316H

Hom Black		Hom Polled		5/8 SM	3/8 AN	reg: 3709219				
J BAR J NIGHTRIDE 225Z		GW PREMIUM BEEF 021TS								
GW TRIPLE CROWN 018C		J BAR J MISS ND 793X								
GW MISS GPRD 359A		GW PREDESTINED 701T								
		GW MISS PREM BEEF 240Y								
MCM TOP GRADE 018X		MR NLC UPGRADE U8676								
CLRS ALL XCELLENCE 316 A		MCM 513R								
HOOK'S XCELLENCE 87X		TNT DUAL FOCUS T249								
		HOOKS PETUNIA 56P								
CED	BW	WW	YW	MWW	Milk	Marb	REA	Doc	Stay	
+10.7	-1.0	+91.5	+140.6	+69.6	+24.0	+0.42	+1.27	+19.0	+18.8	



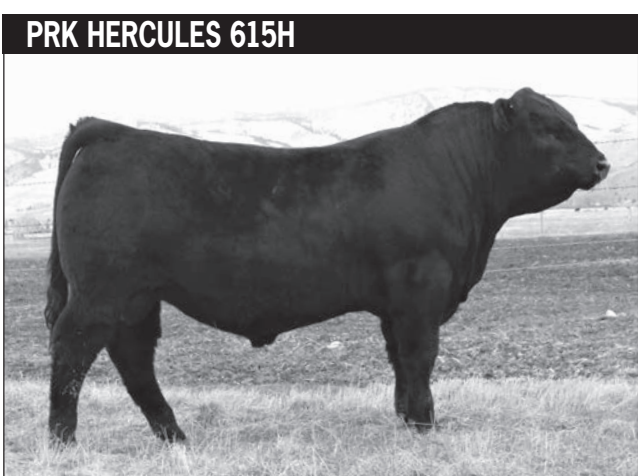
P Reference Sire HOOK'S GALILEO 210G

Hom Black		Hom Polled		3/4 SM	1/4 AN	reg: 3563620				
BRIDLE BIT CALVARY C503		CCR FRONTIER 0053Z								
BRIDLE BIT ECLIPSE E744		BRIDLE BIT MISS X058								
BRIDLE BIT MISS A327		BAR CK TEBOW 1006X								
		BRIDLE BIT MISS Y183								
HOOK'S BEACON 56BS		HOOKS SHEAR FORCE 38K								
HOOK'S EVITA 18E		HOOKS ZAFIRAH 41Z								
HOOK'S YUMA 49Y		HOOKS TITUS 31T								
		HOOK'S UNIVERSAL 17U								
CED	BW	WW	YW	MWW	Milk	Marb	REA	Doc	Stay	
+17.9	-2.3	+90.2	+141.9	+80.1	+35.0	+1.16	+0.67	+23.1	+19.3	



P Reference Sire PRK HERCULES 615H

Black		Polled		3/8 SA	3/8 SM	1/4 AN	reg: 737445			
HOOK'S BLACK HAWK 50B		HOOK'S XAVIER 14X								
HOOK'S EAGLE 6E		HOOK'S YVETTE 100Y								
HOOK'S CRYSTAL 1C		GW-WBF SUBSTANCE 820Y								
		HOOK'S UNDERESTIMATED 6U								
MAC F1 HUMBOLDT 312Z		WERNER WAR PARTY 2417								
*PRK HIGHLIGHT 615D		MAC BLK MELODY 243M								
PRK HIGHLIGHT 409B		KEYS ZODIAC 20Z								
		PRK HIGHLIGHT 109Y								
CED	BW	WW	YW	MWW	Milk	Marb	REA	Doc	Stay	
+14.5	-2.7	+89	+134	+67	+23	+0.3	+1.10	+21	+16	



EPD and Catalog Explanations

Below is a chart showing the Salers Breed EPD Averages for all 2021 born cattle.

EPDs	CED	BW	WW	YW	MWW	Milk	Marb	REA	Doc	Stay
Breed Av	+12.4	-0.1	+62	+89	+47	+16	+0.0	+0.65	+10	+14

The Salers and Simmental breed associations are both part of the new IGS multi-breed genetic evaluation. This means you can directly compare the Salers, Optimizer, and Enhancer EPDs.

All EPDs in the catalog were current as of Nov. 1st. These are now updated weekly so you may find the most current EPD for any animal by using the American Salers Association website and search with the animal's registration number.

CED (calving ease direct) - Expressed as a % of unassisted births. A bull with a +17.4 would be expected to produce 5% more unassisted births than the average Salers bull when bred to the same cows.

Doc (Docility) - Expressed as a percentage of an animals offspring that would be expected to have mild or restless disposition scores (1 or 2) rather than nervous, flighty, or aggressive scores (3, 4, or 5). A +20 means an animals offspring would be 10% more likely to have mild disposition scores than the breed average.

Stay (Stayability) - Expressed as a percentage of daughters who will remain in the herd until age 6. Cattle with a stayability of +19 would have 5% more daughters remain in the herd until at least age 6 than the average Salers.

Color - Hom. Black (Homozygous Black) bulls were DNA tested and will produce all black offspring when bred to red or black cows. **Black - Black** hided animal possessing one black and one red gene. When they are bred to black females also with a red gene they will produce 75% black offspring. When bred to red cows they will produce 50% black calves.

Dam's Production - **BW** Number of calves born and their average actual birth weight in pounds. **WW** is the number of offspring weaned and their average weaning index. **Udder** is a two-digit score representing udder suspension and teat size with 9 being ideal. The first digit corresponds to udder suspension tightness and how level the udder floor and quarters are and the second digit represents the teat length, diameter, and shape.

Gold Dam - Used in the footnote comments. A designation from the Salers Association for those females who meet or exceed the following requirements: Calve by the age of 2.3 years, wean a minimum of 3 natural calves each born within a 395 day interval, and their calves must average at least a 105 weaning index. This designation represents the top 2% of registered females.



1 PRK LIGHTHOUSE 0127L \$4,200

Bull	Red	Polled	1/2 SA	1/2 AN	reg: P756652
Born	BW	205 Wt	Index	11/6 Wt	WDA
3/5/2023	95	691	103	814	3.31

MJB VELOCITY 414E
PRK JACUZZI 971J
PRK GLASGOW 971G

KEYS RETRIBUTION 18B
MJB MARY 134C
MJB GLADIATOR 305B
PRK GLASGOW 671D
CONNEALY COMRADE 1385
MAC CARINA 176C
SRS CINCH 0778C
PRK JASMINE 967W

Dam's Production	
BW	2@93
WW	2@104
Udder	9-9

CED	BW	WW	YW	MWW	Milk	Marb	REA	Doc	Stay
+7.5	+1.3	+70	+105	+51	+16	+0.2	+0.61	+24	+16

Quad Polled

- A deep ribbed, clean designed, and easy going red bull.
- His young dam is a nicely designed female that is very balanced and attractively made.
- She is a maternal sister to the lot #24 bull.
- Jacuzzi is a Velocity son that we kept for a herd sire due to his terrific phenotype and great dam.

2 PRK LOCKBOX 039L \$3,800

Bull	Hom Black	Polled	5/8 SA	3/8 AN	reg: P756654
Born	BW	205 Wt	Index	11/6 Wt	WDA
3/7/2023	97	719	107	850	3.48

MJB VELOCITY 414E
PRK JACUZZI 971J
PRK GLASGOW 971G

KEYS RETRIBUTION 18B
MJB MARY 134C
MJB GLADIATOR 305B
PRK GLASGOW 671D
MAC CENTENNIAL 167C
MAC ZINNIA 207Z
SRS UMPIRE 0584U
LBR DAYTONAS FOCUS S609

Dam's Production	
BW	2@82
WW	2@101
Udder	8-8

CED	BW	WW	YW	MWW	Milk	Marb	REA	Doc	Stay
+6.8	+1.3	+69	+104	+51	+16	+0.1	+0.69	+22	+15

Quad Polled

- Another Jacuzzi with a good disposition who has lots of performance and a wide top.
- The dam of Lockbox has tremendous depth of body and good thickness.



P 5 PRK LUXURY 149L \$4,200

Bull	Hom Black	Scurred	1/2 SA	1/2 AN	reg: P756513	
Born	BW	205 Wt	Index	11/6 Wt	WDA	Frame
2/3/2023	68	641	96	830	3.01	4.8

SRS BULLSEYE 592B
PRK FLINT 198F
 *PRK VIRGINIA 198Y

SOO LINE MOTIVE 9016
 SRS JULIET 0584R
 SRS WANTED 0218W
 PRK VIRGINIA 898U
 CONNEALY COMRADE 1385
 MAC CARINA 176C
 SRS XTRA 0347X
 PRK WENDY 059X

Dam's Production	
BW	1@68
WW	1@96
Udder	9-9

CED	BW	WW	YW	MWW	Milk	Marb	REA	Doc	Stay
+18.9	-5	+52	+75	+41	+16	+0.1	+0.47	+25	+16

- ★★★★ **Potential Heifer Bull • Quad Polled**
- A very high birthweight bull with good length and an attractive pattern.
 - His 2 year old dam has a very nicely designed udder with lots of milk.
 - She is a full sister to a very good bull who was a top seller in the Midland 2021 sale to the Rugg Ranch.
 - He had a 106 Midland index with a 116 efficiency ratio.

Lot 5 Dam's Full Brother



PRK Hulk 269H • April 2021

Maternal Brother to Lot 4



PRK Theodore 963L • August 2023

P 3 PRK LEGEND 848L \$4,200

Bull	Black	Polled	5/8 SA	3/8 AN	reg: P756645		
Born	BW	205 Wt	Index	11/6 Wt	WDA	Frame	
2/27/2023	90	727	108	860	3.41	5.7	

MJB VELOCITY 414E
PRK JACUZZI 971J
 PRK GLASGOW 971G

KEYS RETRIBUTION 18B
 MJB MARY 134C
 MJB GLADIATOR 305B
 PRK GLASGOW 671D
 DJF BORDER LINE 815A
 PRK ROBBIE 252Z
 SRS ZEUS 0509Z
 PRK TREASURE 038X

Dam's Production	
BW	4@90
WW	4@106
Udder	7-8

CED	BW	WW	YW	MWW	Milk	Marb	REA	Doc	Stay
+8.6	-0.1	+70	+106	+51	+16	+0.2	+0.62	+20	+15

Quad Polled

- Legend is a bull with the look and numbers to make a top end herd sire.
- He possess great thickness with an attractive and smooth made design.
- Legend is a bull that we possibly will look to use AI in our program.
- His dam is a moderate sized Duracell daughter who weaned him at 59% of her body weight.

P 4 PRK LEWIS 963L \$3,400

Bull	Red	Polled	1/2 SA	1/2 AN	reg: P756648		
Born	BW	205 Wt	Index	11/6 Wt	WDA	Frame	
3/18/2023	99	708	106	786	3.37	5.8	

MJB VELOCITY 414E
PRK JACUZZI 971J
 PRK GLASGOW 971G

SRS DUNDEE 270D
PRK CATHLEEN 963G
 PRK CATHLEEN 543C

KEYS RETRIBUTION 18B
 MJB MARY 134C
 MJB GLADIATOR 305B
 PRK GLASGOW 671D
 CONNEALY GREELEY
 *SRS FINICKY 0838U
 PRK ACE 081A
 PRK CATHLEEN 843U

Dam's Production	
BW	3@82
WW	3@104
Udder	8-9

CED	BW	WW	YW	MWW	Milk	Marb	REA	Doc	Stay
+7.7	+1.4	+67	+102	+52	+18	+0.2	+0.65	+22	+16

Quad Polled

- This younger red bull has good performance and a very good personality.
- His mother is a thick made, deep bodied, female whose first calf was a Midland graduate with a 102 index and very good efficiency numbers.
- Jacuzzi calves weaned off very heavy with lots of depth and gentle demeanors.

OPTIMIZER BULLS

P 6 PRK LOKI 151L \$3,400

Bull	Hom Black	Polled	1/2 SA	1/2 AN	reg: P756514
Born	BW	205 Wt	Index	11/6 Wt	WDA Frame
2/4/2023	81	646	96	808	2.9 5.0

SRS BULLSEYE 592B		SOO LINE MOTIVE 9016	
PRK FLINT 198F	*PRK VIRGINIA 198Y	SRS JULIET 0584R	SRS WANTED 0218W
MAC F1 ENDURO 43E		PRK VIRGINIA 898U	PRK VIRGINIA 898U
PRK SHANNON 151J	PRK SHANNON 151Z	SRS DIALED IN 3160D	SRS SEIKO 0984W
PRK SHANNON 151Z		PRK BONSAI 993B	PRK RRIMROSE 188Y

CED	BW	WW	YW	MWW	Milk	Marb	REA	Doc	Stay
+16.7	-3.3	+54	+79	+41	+14	+0.1	+0.45	+25	+16

- Typical of the Flint sons he is long spined, easy calving, and has a nice personality.
- Loki's dam is a very long bodied young cow who milks very well.

P 7 PRK LENNOX 185L \$3,800

Bull	Black	Polled	1/2 SA	1/2 AN	reg: P756516
Born	BW	205 Wt	Index	11/6 Wt	WDA Frame
2/8/2023	76	660	98	820	3.03 5.0

SRS BULLSEYE 592B		SOO LINE MOTIVE 9016	
PRK FLINT 198F	*PRK VIRGINIA 198Y	SRS JULIET 0584R	SRS WANTED 0218W
SRS FORWARD 0984F		PRK VIRGINIA 898U	PRK VIRGINIA 898U
PRK PRIMROSE 185J	PRK PRIMROSE 685D	SRS DIALED IN 3160D	SRS SEIKO 0984W
PRK PRIMROSE 685D		PRK BONSAI 993B	PRK RRIMROSE 188Y

CED	BW	WW	YW	MWW	Milk	Marb	REA	Doc	Stay
+15.9	-3.3	+54	+77	+44	+17	+0.1	+0.52	+25	+15

- A light birthweight bull who still has some top and shape to his quarter.
- A long bodied and deep made female who milks heavily is his dam.
- She is a maternal sister to the lot #36 bull.

P 8 PRK LAD 2115L \$3,800

Bull	Hom Black	Polled	1/2 SA	1/2 AN	reg: P756520
Born	BW	205 Wt	Index	11/6 Wt	WDA Frame
2/11/2023	76	644	96	836	3.12 4.8

SRS BULLSEYE 592B		SOO LINE MOTIVE 9016	
PRK FLINT 198F	*PRK VIRGINIA 198Y	SRS JULIET 0584R	SRS WANTED 0218W
SRS GENERAL 4180G		PRK VIRGINIA 898U	PRK VIRGINIA 898U
PRK UNITY 2115J	PRK UNITY 1715E	SRS DYNASTY 667D	SRS JULIET 4180B
PRK UNITY 1715E		SRS BATTALION 0984B	PRK UNITY 555C

CED	BW	WW	YW	MWW	Milk	Marb	REA	Doc	Stay
+17.9	-3.6	+55	+75	+42	+14	+0.1	+0.47	+19	+15

- Lad is a calving ease bull who weaned at over 61% of his dam's body weight.
- His young dam milks great and is very deep and thick.
- The Flint females are making great young cows with super udders and wonderful personalities.

P 9 PRK LEHI 471L \$4,200

Bull	Hom Black	Polled	1/2 SA	3/8 AN	1/8 AR	reg: P756509
Born	BW	205 Wt	Index	11/6 Wt	WDA Frame	
3/4/2023	98	741	111	908	3.68 6.3	

SRS BULLSEYE 592B		SOO LINE MOTIVE 9016	
PRK FLINT 198F	*PRK VIRGINIA 198Y	SRS JULIET 0584R	SRS WANTED 0218W
SRS SPARTACUS 0670Z		PRK VIRGINIA 898U	PRK VIRGINIA 898U
PRK ROSEBUD 471B	PRK ROSEBUD 070X	SRS XTRA 0347X	SRS SEIKO 0670S
PRK ROSEBUD 070X		PRK TONKA 298T	PRK ROSEBUD 870U

CED	BW	WW	YW	MWW	Milk	Marb	REA	Doc	Stay
+13.9	-0.7	+63	+88	+49	+18	+0.1	+0.45	+26	+17

- A very long bodied, high performing Flint son with a super disposition.
- He should produce offspring with great personalities and daughters with excellent udder structure.
- His dam is very attractively made with lots of milk and a super udder.
- Great maternal backs this bull with both his dam and Flints dam being "Gold Dam" status.



P 10 PRK LIGHT 0171L \$3,800

Bull	Red	Polled	5/8 SA	3/8 AN	reg: P756632
Born	BW	205 Wt	Index	11/6 Wt	WDA Frame
3/22/2023	82	704	105	758	3.31 5.3

SRS EL DORADO 4147E		SRS BOTTOM LINE 978B	
SRS HOOSIER 8122H	SRS COLUMBIA 8122F	SRS PONY TAIL 4147B	HF DISTINCT 104D
SRS DOMINANT 256D		SRS COLUMBIA 4101B	SRS BANNER 0749B
PRK RHONDA 0171H	PRK RHONDA 171Y	*SRS JULIET 0829U	*SRS UNITED 0653U
PRK RHONDA 171Y		*PRK RHONDA 541R	

CED	BW	WW	YW	MWW	Milk	Marb	REA	Doc	Stay
+15.1	-1.9	+57	+84	+49	+21	+0.1	+0.42	-8	+13

- This younger bull is very clean made and attractive in his design with very good performance for his lighter birth weight.

Value to be Found

We would encourage you to look through all the bulls in the sale offering, as often there is great quality and value to be found in the lower price groups. We feel that the bulls are very even and close in quality from the bottom group to many in the higher price groups. We had to make the price group decisions more than a month in advance of the sale and find that some can change a lot in that amount of time. Your own priorities, preferences, and objectives may also differ from our opinion and judgment. We feel that all the offered bulls have tremendous value at their base prices. When you consider the calf value of the offspring they will sire, the longevity they possess through genetics and development, and their salvage value they offer a great opportunity and investment.

OPTIMIZER BULLS



P 11 PRK LEADER 1919L \$3,800

Bull	Hom Black	Polled	1/2 SA	1/2 AN	reg: P756626		
Born	BW	205 Wt	Index	11/6 Wt	WDA	Frame	
2/18/2023	88	642	96	890	3.41	5.2	

SRS EL DORADO 4147E	SRS BOTTOM LINE 978B	<i>Dam's Production</i> BW 3@77 WW 3@92 Udder 8-9
SRS HOOSIER 8122H	SRS PONY TAIL 4147B	
SRS COLUMBIA 8122F	HF DISTINCT 104D	
	SRS COLUMBIA 4101B	
SRS DUNDEE 270D	CONNEALY GREELEY	
PRK LORI 1919G	*SRS FINICKY 0838U	
PRK LORI 589C	*SRS UNITED 0653U	
	PRK LORI 389A	

CED	BW	WW	YW	MWW	Milk	Marb	REA	Doc	Stay
+14.4	-0.8	+59	+89	+46	+17	+0.1	+0.54	+1	+14

- Quad Polled**
- This smooth and clean made bull has been an eye catcher from early last Spring.
 - The Lori cow is a long, balanced female with a very nice udder whose first calf is one of our top 2 year old females.

P 12 PRK LIBERTY 2155L \$4,200

Bull	Black	Polled	5/8 SA	3/8 AN	reg: P756608		
Born	BW	205 Wt	Index	11/6 Wt	WDA	Frame	
2/10/2023	74	708	106	830	3.09	5.5	

MAC F1 FREEDOM 150F	CONNEALY COMRADE 1385	<i>Dam's Production</i> BW 1@74 WW 1@106 Udder 9-9
MJB PATRIOT 342H	*MAC AZURE 81A	
MJB DIAMOND 140F	NJF BOULDER 46B	
	MJB DAKOTA 152C	
MJB VELOCITY 414E	KEYS RETRIBUTION 18B	
DLB VEL STARLIGHT 115J	MJB MARY 134C	
DLB HD STARLIGHT 647D	OPP 1001Y OF 58W	
	DLB PREM STARLIGHT 16Y	

CED	BW	WW	YW	MWW	Milk	Marb	REA	Doc	Stay
+11.8	-0.6	+69	+108	+49	+15	+0.2	+0.58	+9	+15

- ★★ Potential Heifer Bull • Quad Polled**
- Take a look at this Herd Sire prospect who has the numbers and look of a great one.
 - Liberty has a moderate birth weight with great performance and the thickness and style to make a breed impact in any herd.
 - His 2 year old dam came from Dan & Marilyn Deichmann.
 - She is a very clean and attractive female with a great udder and weaned him at over 65%.



MJB Patriot 342H

P 13 PRK LOYALIST 879L \$4,200

Bull	Black	Polled	5/8 SA 3/8 AN		reg: P756607	
Born	BW	205 Wt	Index	11/6 Wt	WDA	Frame
2/20/2023	92	679	101	916	3.54	6.1

MAC F1 FREEDOM 150F MJB PATRIOT 342H MJB DIAMOND 140F	CONNEALY COMRADE 1385 *MAC AZURE 81A NJF BOULDER 46B MJB DAKOTA 152C	Dam's Production BW 4@83 WW 4@102 Udder 9-9
SRS BENCHMARK 8105B PRK KIT 879F PRK KIT 699D	SRS ZEUS 0509Z *SRS SHANNON 8105U DJF BORDER LINE 815A *PRK KIT 999W	

CED	BW	WW	YW	MWW	Milk	Marb	REA	Doc	Stay
+14.1	-1.5	+71	+108	+52	+16	+0.1	+0.48	+18	+13

Quad Polled

- Loyalist is a balanced bull who has good thickness over his top and through his quarter with an easy going demeanor.
- His dam is very long sided with a super udder and wonderful disposition who weaned him at 59%.
- She is a maternal sister to the dam of lot #37 and the grand dam to lot #34.
- After using his sire MJB Patriot in our AI program for 2 years, we purchased him this fall to use naturally.



P 14 PRK LANDMARK 885L \$4,200

Bull	Hom Black	Polled	1/2 SA 3/8 AN 1/8 AR		reg: P756504	
Born	BW	205 Wt	Index	11/6 Wt	WDA	Frame
2/27/2023	95	709	106	878	3.48	5.2

MJB ELWAY 322C PRK FULLBACK 280F *PRK ROSEBUD 280Z	MAC QUARTERBACK 58Y *MJB YELLOW ROSE 156Z SRS XPERT 0881X PRK ROSEBUD 070X	Dam's Production BW 4@79 WW 4@101 Udder 9-9
SRS CATALYST 0435C PRK REPLIC 885F PRK REPLIC 485B	SRS ZEUS 0509Z SRS PATCHWORK 0435P *SRS UNITED 0653U PRK REPLIC 095X	

CED	BW	WW	YW	MWW	Milk	Marb	REA	Doc	Stay
+13.7	-0.4	+64	+88	+52	+20	+0.1	+0.52	+14	+17

Quad Polled

- A bull with great length in a moderate and very clean made attractive package.
- Landmark will mark his calves with lots of thickness and length.
- His sire, PRK Fullback, was a top seller in our 2017 sale to Bruce and Heidi Thurgood and we have continued to use him with success in our AI program.



Maternal Brother to Lot 13



PRK Holland 879H • March, 2021

P 15 PRK LODGE 0134L \$3,400

Bull	Hom Black	Polled	1/2 SA 1/2 AN		reg: P756678	
Born	BW	205 Wt	Index	11/6 Wt	WDA	Frame
3/1/2023	83	719	107	812	3.25	5.8

SRS GOVERNOR 4111G SRS JUDGE 7135J SRS AURA 7135E	SRS ENGAGE 4221E SRS LACE 4111B SRS BENCHMARK 8105B SRS AURA 4152B CONNEALY COMRADE 1385 MAC CARINA 176C PRK GINGER 0134H *PRK GINGER 484B	Dam's Production BW 2@77 WW 2@102 Udder 9-9
MAC F1 ENDURO 43E PRK GINGER 0134H *PRK GINGER 484B	SRS ZIP CODE 0174Z PRK GINGER 242M	

CED	BW	WW	YW	MWW	Milk	Marb	REA	Doc	Stay
+13.9	-1.4	+76	+108	+60	+22	+0.2	+0.65	+5	+16

★ ★ Potential Heifer Bull • Quad Polled

- A potential heifer bull with good performance and EPD profile.
- His young dam is a top end female who is moderate, deep, and thick with an ideal udder and milk.
- She weaned this calf at over 65% of her body weight.
- Her dam is a gold dam and the cow family is very efficient and gentle.



P 16 PRK LANCASTER 058L \$4,200

Bull	Hom Black	Polled	5/8 SA 3/8 AN		reg: P756681	
Born	BW	205 Wt	Index	11/6 Wt	WDA	Frame
2/26/2023	98	707	105	888	3.51	5.8

SRS GOVERNOR 4111G SRS JUDGE 7135J SRS AURA 7135E	SRS ENGAGE 4221E SRS LACE 4111B SRS BENCHMARK 8105B SRS AURA 4152B SRS BULLSEYE 592B *PRK VIRGINIA 198Y SRS DUNDEE 270D PRK WINTER 540C	Dam's Production BW 2@87 WW 2@101 Udder 9-9
PRK FLINT 198F PRK WINTER 058H PRK WINTER 858F		

CED	BW	WW	YW	MWW	Milk	Marb	REA	Doc	Stay
+12.6	-0.2	+77	+111	+56	+18	+0.1	+0.65	+10	+15

Quad Polled

- Lancaster is very deep sided and balanced in his phenotype.
- He weaned at 65% of his 3 year old dam's weight.
- She is a Flint daughter who is very attractive and balanced with a great udder.



PRK Journey 557J • September 2021

P 17 PRK LAWMAN 184L \$4,200

Bull	Hom Black	Polled	1/2 SA	1/2 AN	reg: P756664		
Born	BW	205 Wt	Index	11/6 Wt	WDA	Frame	
3/4/2023	90	747	111	880	3.56	5.7	

SRS GOVERNOR 4111G	SRS ENGAGE 4221E	Dam's Production
SRS JUDGE 7135J	SRS LACE 4111B	
SRS AURA 7135E	SRS BENCHMARK 8105B	BW 11@86
*SRS UNITED 0653U	SRS AURA 4152B	WW 11@101
PRK LASS 184Y	SRS SAINT 0218S	Udder 6-8
PRK LASS 864U	*SRS STARR 0653S	
	PRK SONIC 711S	
	PRK LASS 144L	

CED	BW	WW	YW	MWW	Milk	Marb	REA	Doc	Stay
+13	-0.6	+77	+112	+59	+20	+0.1	+0.6	+10	+16

Quad Polled

- This bull is one we really appreciate for his length of body and eye appeal.
- He has a very bright future and is backed by a dam who has stood the test of time.
- She is a heavy milking, attractive made female.

P 18 PRK LOGO 280L \$4,200

Bull	Hom Black	Polled	1/2 SA	1/2 AN	reg: P756665		
Born	BW	205 Wt	Index	11/6 Wt	WDA	Frame	
3/8/2023	83	721	108	886	3.65	6.0	

SRS GOVERNOR 4111G	SRS ENGAGE 4221E	Dam's Production
SRS JUDGE 7135J	SRS LACE 4111B	
SRS AURA 7135E	SRS BENCHMARK 8105B	BW 10@82
SRS XPERT 0881X	SRS AURA 4152B	WW 10@104
*PRK ROSEBUD 280Z	SRS PATENT 0221P	Udder 7-8
PRK ROSEBUD 070X	*SRS PRICELESS 0881U	
	PRK TONKA 298T	
	PRK ROSEBUD 870U	

CED	BW	WW	YW	MWW	Milk	Marb	REA	Doc	Stay
+14.4	-1.9	+76	+111	+62	+24	+0	+0.61	+6	+17

★ Potential Heifer Bull • Quad Polled

- Logo is a bull we put a mark on when he was born.
- He is better than breed average in all 8 of the performance EPD's.
- This cow is one of our very best proven females in the herd and a gold dam.
- She is a beautifully designed attractive female with great length, thickness, and milk.
- She has several daughters in the herd as well as a couple of top bulls, including Fullback who we are using.
- To top it off she has an excellent disposition.

P 19 PRK LODESTAR 557L \$3,800

Bull	Hom Black	Polled	1/2 SA	3/8 AN	1/8 AR	reg: P756668	
Born	BW	205 Wt	Index	11/6 Wt	WDA	Frame	
3/7/2023	99	771	115	884	3.62	6.5	

SRS GOVERNOR 4111G	SRS ENGAGE 4221E	Dam's Production
SRS JUDGE 7135J	SRS LACE 4111B	
SRS AURA 7135E	SRS BENCHMARK 8105B	BW 7@89
SRS XTRA 0347X	SRS AURA 4152B	WW 7@105
*PRK ANNIE 557C	SRS UPRISING 0059U	Udder 7-7
PRK ANNIE 557R	*SRS NORAH 0347N	
	LEGEND'S FREE ENTERPRISE	
	PRK ANNIE 395N	

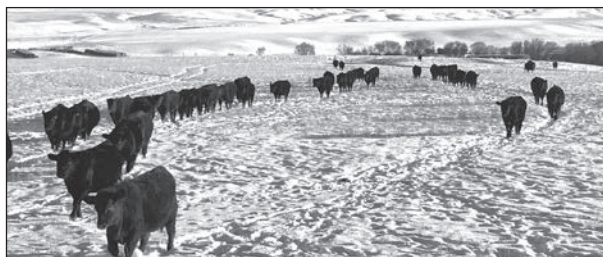
CED	BW	WW	YW	MWW	Milk	Marb	REA	Doc	Stay
+12.2	+0.1	+80	+116	+60	+20	+0.1	+0.6	+10	+16

Quad Polled

- Here is another high performance Judge son who has super length and will sire a powerful set of calves.
- His dam has reached gold dam status and weaned Lodestar at 60% of her body weight.
- She is a moderate framed female with good thickness and milk.



PRK Fullback 280F • September 2018



OPTIMIZER BULLS

P20 PRK LOGGER 955L \$3,800

Bull	Horn	Black	Polled	1/2 SA	1/2 AN	reg: P756674	
Born	BW	205 Wt	Index	11/6 Wt	WDA	Frame	
3/4/2023	91	773	115	870	3.52	6.6	

SRS GOVERNOR 4111G SRS JUDGE 7135J SRS AURA 7135E	SRS ENGAGE 4221E SRS LACE 4111B SRS BENCHMARK 8105B SRS AURA 4152B SRS SPARTACUS 0670Z *MJB BARBIE 126Z *SRS UNITED 0653U PRK UNITY 381A	Dam's Production BW 3@91 WW 3@103 Udder 8-9
MJB GLADIATOR 305B PRK UNITY 955G PRK UNITY 555C		

CED	BW	WW	YW	MWW	Milk	Marb	REA	Doc	Stay
+12.4	+0.3	+86	+124	+62	+19	+0.1	+0.74	+4	+16

Quad Polled

- This bull will do the job if you are looking for increased payweight at weaning.
- You won't be sacrificing maternal either as he is above breed average for milk and stayability.
- The Judge sons are going to be long bodied, deep ribbed, and heavy weaning, judging from our first calf crop.

P21 PRK LUCKY CHARM 0164L \$3,800

Bull	Red	Polled	1/2 SA	3/8 AR	1/8 AN	reg: P756691	
Born	BW	205 Wt	Index	11/6 Wt	WDA	Frame	
2/27/2023	88	683	102	822	3.26	5.5	

PIE CINCH 4126 MAC F1 JUDSON 96J MAC GEMMA 374G	LSF SAGA 1040Y TKP BONNE BEL 110 MAC ATOMIC FORCE 36A *MAC ZAILA 109Z DJF BORDER LINE 815A PRK ROBBIE 252Z SRS XTRA 0347X *PRK HOLLY 464P	Dam's Production BW 2@77 WW 2@99 Udder 9-9
PRK DURACELL 252D PRK HOLLY 0164H PRK HOLLY 264Z		

CED	BW	WW	YW	MWW	Milk	Marb	REA	Doc	Stay
+13.1	-1.2	+65	+98	+53	+21	-0.1	+0.46	+21	+17

Quad Polled

- If balance in both phenotype and EPD profile is important then look up this gentle red bull.
- He has a strong maternal pedigree and should sire some great females.
- His young dam has a flawless phenotype in our opinion and is similarly bred to the dam of lot #22.

P22 PRK LUCKY 154L \$4,200

Bull	Red	Polled	1/2 SA	3/8 AR	1/8 AN	reg: P755804	
Born	BW	205 Wt	Index	11/6 Wt	WDA	Frame	
2/9/2023	68	652	97	814	3.01	5.2	

PIE CINCH 4126 MAC F1 JUDSON 96J MAC GEMMA 374G	LSF SAGA 1040Y TKP BONNE BEL 110 MAC ATOMIC FORCE 36A *MAC ZAILA 109Z DJF BORDER LINE 815A *PRK LASS 384A *SRS UNITED 0653U PRK HOLLY 264Z	Dam's Production BW 1@68 WW 1@97 Udder 9-9
PRK FENWAY 384F PRK JEWEL 154J PRK HOLLY 454B		

CED	BW	WW	YW	MWW	Milk	Marb	REA	Doc	Stay
+13.5	-0.9	+66	+95	+53	+20	-0.1	+0.41	+22	+17

★★★ Potential Heifer Bull • Quad Polled

- A very long spined light birth weight bull with some shape and dimension to his quarter.
- His 2 year old dam is a daughter of Deana's prolific 4-H cow.
- She is hard to find fault with from her excellent disposition and udder to her length, thickness, and balance.
- She combines 2 of our very best red cow families.

P23 PRK LIMA 177L \$3,800

Bull	Red	Polled	1/2 SA	3/8 AR	1/8 AN	reg: P756696	
Born	BW	205 Wt	Index	11/6 Wt	WDA	Frame	
2/23/2023	80	670	100	806	3.15	5.4	

PIE CINCH 4126 MAC F1 JUDSON 96J MAC GEMMA 374G	LSF SAGA 1040Y TKP BONNE BEL 110 MAC ATOMIC FORCE 36A *MAC ZAILA 109Z DJF BORDER LINE 815A PRK ROBBIE 252Z SRS YAHTZEE 996Y PRK ROBIN 577R	Dam's Production BW 1@80 WW 1@100 Udder 8-8
PRK DURACELL 252D PRK ROBIN 177J *PRK ROBIN 377A		

CED	BW	WW	YW	MWW	Milk	Marb	REA	Doc	Stay
+14.2	-2	+63	+95	+52	+21	-0.1	+0.46	+18	+16

★★ Potential Heifer Bull • Quad Polled

- Another red bull with a balanced performance profile who has lots of depth and capacity.
- His dam is a good milking, balanced, and deep ribbed female who weaned this calf at 58%.
- Grand dam is a gold dam and proven female in our herd.

P24 PRK LOWBOY 737L \$3,800

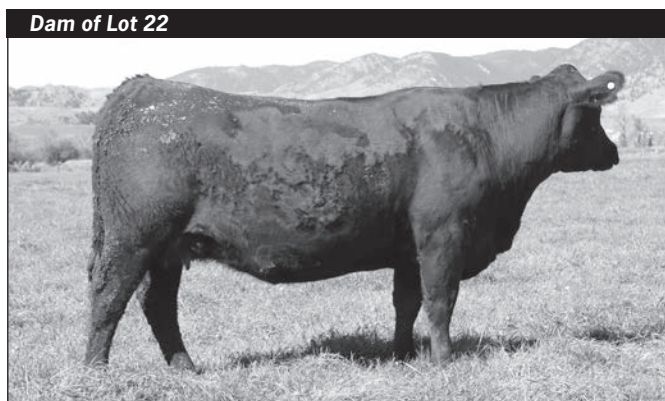
Bull	Red	Polled	1/2 SA	3/8 AR	1/8 AN	reg: P756685	
Born	BW	205 Wt	Index	11/6 Wt	WDA	Frame	
3/21/2023	93	739	110	850	3.7	5.9	

PIE CINCH 4126 MAC F1 JUDSON 96J MAC GEMMA 374G	LSF SAGA 1040Y TKP BONNE BEL 110 MAC ATOMIC FORCE 36A *MAC ZAILA 109Z SRS ARIAT 270A SRS PONY TAIL 0778T BIG SKY TRITON 40R PRK 392N	Dam's Production BW 5@90 WW 5@108 Udder 8-7
SRS CINCH 0778C • PRK JASMINE 737E PRK JASMINE 967W		

CED	BW	WW	YW	MWW	Milk	Marb	REA	Doc	Stay
+13.8	-1.5	+63	+93	+54	+22	-0.1	+0.44	+21	+16

Quad Polled

- A younger calf with lots of weaning performance.
- His dam is an easy fleshing female who possesses length and depth and has achieved gold dam status.
- She is also the grand dam of lot #1.



PRK Jewel 154J • September 2023

P25 PRK LIGHTNING 779L \$4,200

Bull	Red	Polled	1/2 SA	1/2 AR	reg: P756686	
Born	BW	205 Wt	Index	11/6 Wt	WDA	Frame
2/28/2023	86	709	106	948	3.78	6.6

PIE CINCH 4126 MAC F1 JUDSON 96J MAC GEMMA 374G	LSF SAGA 1040Y TKP BONNE BEL 110 MAC ATOMIC FORCE 36A *MAC ZAILA 109Z	<i>Dam's Production</i> BW 5@78 WW 5@103 Udder 7-7
DJF BORDER LINE 815A PRK KIT 779E PRK KIT 599C	C-BAR EVOLUTION 107Y *STCY UNITY 815U SRS ZEUS 0509Z *PRK KIT 999W	

CED	BW	WW	YW	MWW	Milk	Marb	REA	Doc	Stay
+14.8	-3	+63	+95	+53	+22	-0.1	+0.41	+25	+16

- ★★ Potential Heifer Bull • Quad Polled
- Lightning has tremendous length coupled with a good top and lots of eye appeal.
 - A very gentle red bull who combines good performance with strong maternal.
 - The dam is a very thick made and deep bodied female who comes from a great cow family in our program.
 - She is a full sister to the dam of lot #83 heifer calf.



OPTIMIZER BULLS

Aiming High in Big Sky

When the Salers Association announced that Jr. Nationals for 2023 was coming to Montana, Deana started begging to be able to attend. She has been missing showing since her 4-H career ended a couple of years ago. We left Joseph and Spencer to start the haying and we loaded up the trailer and headed to Lewistown for the last week in June. Scott and Deana exhibited 2 Optimizer market steers, 3 Optimizer yearling heifers, and then a 2-year-old Optimizer female and her bull calf. They had a busy and fun week. In addition to showing their cattle they participated in team sales, a skill-a-thon contest, and team fitting. They had lots of fun, made many new friends, and learned a lot from everyone there. We are sure grateful for everyone who put in so much work to make this great event possible.

All of the cattle we exhibited were bred and raised here on our operation. They were sired by Parke, Skinner, and MacDonald herd sires that we own and use in our pastures. Scott received reserve division champion with his Optimizer heifer, PRK Lass 297K, sired by PRK Duracell 252D. Deana won Grand Champion Optimizer bull with PRK Lucky 154L (who sells as Lot #22), a son of MAC F1 Judson 96J. She was also Grand Champion Optimizer pair with him and his dam, PRK Jewel 154J. Jewel is a daughter of PRK Fenway 384F and was raised by Deana out of her 4-H cow. Deana received the Brenton Salyers Premier Exhibitor award for the 2023 Junior Nationals and Parke Ranch was honored to be awarded the Premier Breeder award.





LOT 26

P 26 PRK LINEAR 835L \$3,800

Bull	Red	Polled	1/2 SA	1/4 AN	1/4 AR	reg: P756688													
Born	BW	205 Wt	Index	11/6 Wt	WDA	Frame													
2/25/2023	72	664	99	832	3.28	6.0													
PIE CINCH 4126 MAC F1 JUDSON 96J MAC GEMMA 374G			LSF SAGA 1040Y TKP BONNE BEL 110 MAC ATOMIC FORCE 36A *MAC ZAILA 109Z					<table border="1"> <tr><th colspan="2">Dam's Production</th></tr> <tr><td>BW</td><td>4@79</td></tr> <tr><td>WW</td><td>4@99</td></tr> <tr><td>Udder</td><td>8-8</td></tr> </table>				Dam's Production		BW	4@79	WW	4@99	Udder	8-8
Dam's Production																			
BW	4@79																		
WW	4@99																		
Udder	8-8																		
SRS CINCH 0778C PRK KIT 835F PRK KIT 635D			SRS ARIAT 270A SRS PONY TAIL 0778T *SRS UNITED 0653U PRK KIT 445B																
CED	BW	WW	YW	MWW	Milk	Marb	REA	Doc	Stay										
+14.5	-1.5	+61	+90	+50	+20	-0.1	+0.38	+19	+18										

- ★ Potential Heifer Bull • Quad Polled
- TWIN
- An easy going long red bull with good depth.
- Mother is a high quality female that is attractively designed with lots of length.
- Judson appears to stamp his first calves with lots of length of body and very good personalities.

P 27 PRK LUMBERJACK 0109L \$3,800

Bull	Hom Black	Scurred	1/2 SA	1/2 AN	reg: P756502														
Born	BW	205 Wt	Index	11/6 Wt	WDA	Frame													
2/21/2023	101	751	112	946	3.67	6.4													
CONNEALY COMRADE 1385 MAC F1 ENDURO 43E MAC CARINA 176C			CONNEALY CONSENSUS 7229 HAPPY GEE OF CONANGA 919 *S NEBRASKA 330N MAC WILLOW 134W					<table border="1"> <tr><th colspan="2">Dam's Production</th></tr> <tr><td>BW</td><td>2@98</td></tr> <tr><td>WW</td><td>2@117</td></tr> <tr><td>Udder</td><td>8-8</td></tr> </table>				Dam's Production		BW	2@98	WW	2@117	Udder	8-8
Dam's Production																			
BW	2@98																		
WW	2@117																		
Udder	8-8																		
SRS DOMINO 155D PRK KIT 0109H *PRK KIT 999W			SRS BANNER 0749B *SRS JULIET 0829U SRS MARKSMAN 0059M PRK KIT 245M																
CED	BW	WW	YW	MWW	Milk	Marb	REA	Doc	Stay										
+8.8	+1.8	+76	+115	+61	+22	+0.2	+0.49	+18	+17										

- Here is a bull with loads of performance due to his length and capacity.
- Lumberjack is a quiet bull with a strong maternal pedigree starting at his gold dam grandmother who weaned her 13th calf this fall.
- You will find this cow family in many of the pedigrees in our cow herd.
- He weaned at 65% of his dam's weight and her first calf was a top performing bull at Midland with a 108 Midland Index.
- Fertility and Longevity run deep in this bulls genetics.



P 28 PRK LOOT 052L \$3,800

Bull	Black	Polled	5/8 SA	3/8 AN	reg: P757424											
Born	BW	205 Wt	Index	11/6 Wt	WDA	Frame										
2/21/2023	92	678	101	860	3.33	5.5										
CONNEALY COMRADE 1385 MAC F1 ENDURO 43E MAC CARINA 176C			CONNEALY CONSENSUS 7229 HAPPY GEE OF CONANGA 919 *S NEBRASKA 330N MAC WILLOW 134W					<table border="1"> <tr><th colspan="2">Dam's Production</th></tr> <tr><td>BW</td><td>2@92</td></tr> <tr><td>WW</td><td>2@101</td></tr> <tr><td>Udder</td><td>9-9</td></tr> </table>	Dam's Production		BW	2@92	WW	2@101	Udder	9-9
Dam's Production																
BW	2@92															
WW	2@101															
Udder	9-9															
SRS CINCH 0778C PRK GINGER 052H PRK GINGER 332A			SRS ARIAT 270A SRS PONY TAIL 0778T *SRS UNITED 0653U PRK GINGER 032X													
CED	BW	WW	YW	MWW	Milk	Marb	REA	Doc	Stay							
+14.3	-0.8	+64	+97	+50	+18	+0.2	+0.49	+24	+17							

- Quad Polled
- Here is a bull to improve disposition without sacrificing other important traits.
- A young female that is very balanced, attractive, moderate and great uddered weaned him at over 60% of her body weight.



LOT 29



LOT 29

P 29 PRK LANDSLIDE 776L \$4,200

Bull	Hom Black	Polled	1/2 SA	1/2 AN	reg: P756496														
Born	BW	205 Wt	Index	11/6 Wt	WDA	Frame													
3/4/2023	97	688	103	834	3.38	5.5													
CONNEALY COMRADE 1385 MAC F1 ENDURO 43E MAC CARINA 176C			CONNEALY CONSENSUS 7229 HAPPY GEE OF CONANGA 919 *S NEBRASKA 330N MAC WILLOW 134W					<table border="1"> <tr><th colspan="2">Dam's Production</th></tr> <tr><td>BW</td><td>5@80</td></tr> <tr><td>WW</td><td>4@97</td></tr> <tr><td>Udder</td><td>9-9</td></tr> </table>				Dam's Production		BW	5@80	WW	4@97	Udder	9-9
Dam's Production																			
BW	5@80																		
WW	4@97																		
Udder	9-9																		
SRS CINCH 0778C PRK GLASGOW 776E PRK GLASGOW 567C			SRS ARIAT 270A SRS PONY TAIL 0778T PRK ACE 081A PRK GLASGOW 367A																
CED	BW	WW	YW	MWW	Milk	Marb	REA	Doc	Stay										
+13.7	-0.9	+64	+97	+49	+17	+0.2	+0.49	+12	+18										

- Quad Polled
- Landslide demonstrates lots of volume and capacity along with great thickness and muscle expression.
- His dam is a nicely designed, feminine made female with a great udder.
- Enduro has been siring quality and consistent offspring for several years in our program.

OPTIMIZER BULLS

P 30 PRK LEXINGTON 783L \$3,800

Bull	Hom Black	Scurred	5/8 SA	3/8 AN	reg: S756497	
Born	BW	205 Wt	Index	11/6 Wt	WDA	Frame
2/25/2023	96	720	107	924	3.64	6.2

CONNEALY COMRADE 1385
MAC F1 ENDURO 43E
 MAC CARINA 176C

CONNEALY CONSENSUS 7229
 HAPPY GEE OF CONANGA 919
 *S NEBRASKA 330N
 MAC WILLOW 134W

MAC QUARTERBACK 58Y
 *MJB YELLOW ROSE 156Z

MJB ELWAY 322C
PRK SUZANNE 783E
 PRK SUZANNE 483B

SRS YAKIMA 9118YY
 PRK SUZANNE 182Y

Dam's Production	
BW	5@85
WW	4@99
Udder	8-8

CED	BW	WW	YW	MWW	Milk	Marb	REA	Doc	Stay
+9.5	+0.6	+71	+102	+52	+17	+0.2	+0.58	+12	+18

- If you are looking to improve performance in your calf crop this bull will add lots of length and stretch to his calves.
- Dam is a thick made good milking female who had a top group bull in our 2021 sale.



P 33 PRK LARAMIE 162L \$4,200

Bull	Hom Black	Polled	1/2 SA	1/2 AN	reg: P756568	
Born	BW	205 Wt	Index	11/6 Wt	WDA	Frame
2/17/2023	87	687	102	844	3.22	5.0

SRS ELEMENT 4154E
SRS GUIDELINE 7126G
 *SRS LACE 7126E

SRS BENCHMARK 8105B
 SRS MORGAN 4154B
 SRS BOTTOM LINE 978B
 SRS LACE 3179A

MJB ELWAY 322C
 *PRK ROSEBUD 280Z

PRK FULLBACK 280F
PRK ROSEBUD 162J
 PRK ROSEBUD 962G

PRK DURACELL 252D
 PRK ROSEBUD 780E

Dam's Production	
BW	1@87
WW	1@102
Udder	9-9

CED	BW	WW	YW	MWW	Milk	Marb	REA	Doc	Stay
+10.9	-2.5	+64	+93	+50	+18	+0.1	+0.51	+24	+15

- Quad Polled
- A long made bull with a great top and a stylish and attractive design.
- Very similarly bred to lot #32 with a great personality and terrific numbers.
- Another Fullback daughter with lots of length and a nicely designed udder.



PRK Keynote 0112K • September 2022

P 31 PRK LIVINGSTON 0112L \$3,400

Bull	Hom Black	Polled	1/2 SA	1/2 AN	reg: P756563	
Born	BW	205 Wt	Index	11/6 Wt	WDA	Frame
3/17/2023	86	703	105	796	3.4	5.1

SRS ELEMENT 4154E
SRS GUIDELINE 7126G
 *SRS LACE 7126E

SRS BENCHMARK 8105B
 SRS MORGAN 4154B
 SRS BOTTOM LINE 978B
 SRS LACE 3179A

CONNEALY GREELEY
 *SRS FINICKY 0838U

SRS DUNDEE 270D
PRK SUZANNE 0112H
 PRK SUZANNE 1712E

SRS BENCHMARK 8105B
 PRK SUZANNE 572C

Dam's Production	
BW	2@85
WW	2@102
Udder	9-8

CED	BW	WW	YW	MWW	Milk	Marb	REA	Doc	Stay
+10.9	-1.4	+64	+93	+50	+18	+0.1	+0.5	+23	+14

- Quad Polled
- A moderate framed and deep bodied bull with good performance for a modest birthweight.
- His full brother was in our top group in last years sale.
- His mother is a high quality young female who has great length, personality, and an attractive phenotype.

P 32 PRK LIFETIME 0139L \$3,400

Bull	Hom Black	Polled	1/2 SA	1/2 AN	reg: P756565	
Born	BW	205 Wt	Index	11/6 Wt	WDA	Frame
2/18/2023	99	667	99	820	3.14	4.8

SRS ELEMENT 4154E
SRS GUIDELINE 7126G
 *SRS LACE 7126E

SRS BENCHMARK 8105B
 SRS MORGAN 4154B
 SRS BOTTOM LINE 978B
 SRS LACE 3179A

MJB ELWAY 322C
 *PRK ROSEBUD 280Z

PRK FULLBACK 280F
PRK PIGEON 0139H
 PRK PIGEON 593C

SRS SPARTACUS 0670Z
 PRK PIGEON 393A

Dam's Production	
BW	2@88
WW	2@99
Udder	9-8

CED	BW	WW	YW	MWW	Milk	Marb	REA	Doc	Stay
+10.9	-0.7	+63	+88	+50	+19	+0.1	+0.46	+25	+17

- Quad Polled
- Here is a very thick topped and quartered bull who comes in a moderate sized frame.
- An easy going bull with a very balanced and above average EPD profile.
- Young dam is a good milking and long bodied female.

P 34 PRK LEGENDARY 189L \$4,200

Bull	Hom Black	Polled	1/2 SA	1/2 AN	reg: P756569	
Born	BW	205 Wt	Index	11/6 Wt	WDA	Frame
2/8/2023	82	693	103	854	3.15	4.8

SRS ELEMENT 4154E
SRS GUIDELINE 7126G
 *SRS LACE 7126E

SRS BENCHMARK 8105B
 SRS MORGAN 4154B
 SRS BOTTOM LINE 978B
 SRS LACE 3179A

SRS DYNASTY 667D
 SRS JULIET 4180B

SRS GENERAL 4180G
PRK KIT 189J
 PRK KIT 879F

SRS BENCHMARK 8105B
 PRK KIT 699D

Dam's Production	
BW	1@82
WW	1@103
Udder	9-9

CED	BW	WW	YW	MWW	Milk	Marb	REA	Doc	Stay
+13.8	-2.6	+65	+91	+51	+19	+0.1	+0.49	+18	+14

- ** Potential Heifer Bull • Quad Polled
- A potential heifer bull that is moderate in frame but has good performance.
- Definitely have to admire him for his thick top and powerful hip and quarter.
- His dam is a heavy milking, good uddered female that weaned her calf at 67% of her body weight.
- She is a maternal sister to the lot #13 bull.



Birthweight

Here at Parke Ranch we believe in honest, accurate, objective, and complete data collection and reporting. This is the beginning point of any valuable analysis or decision making which uses weights, indexes, or EPD. One of these times of data collection is at an animal's birth. We weigh each calf with a digital scale within 24 hours of their birth. Several years back I conducted my own experiment by both weighing and using a tape to measure and estimate birth weight for every calf born that year. I found the tape measuring method to be very subjective depending on who was measuring, where the tape was placed, how tight it was pulled, or the composition of the calf. We found a correlation between the two methods of measuring birth weight, but definitely found that the heavier calves were several pounds lighter using the taping method when compared to the actual scale weight. Because of this experience we have decided to weigh each calf with a scale. We recognize that many producers for various reasons use other methods. If comparing birth weights between animals from different producers, it might be of value to make sure you are comparing apples to apples.

Birth weights are significantly impacted by several factors other than just genetics. Environment and producer practices also have a large effect on a calf's actual birth weight. The weather conditions (temperature) play a role in the size of the developing fetus. Calves with the same genetic make-up will weigh more at birth in the colder climates of the North when compared to those born in the Mid-West or the South. Birth weights are also lower in those calves born in the Fall compared to late Winter or Spring. The body condition, size and age of the dam during fetal growth will impact the birth weight as well. The length of gestation can be impacted by several variables and plays a role in a calf's weight at birth. These factors and others are important to consider if we are comparing weights between different herds and environments. Make sure you aren't comparing apples to oranges!

It is true that for many years birth weight was maybe the only performance indicator we had to use in predicting calving difficulty of offspring. Over the last couple of decades however we have developed other indicators that are more reliable when attempting to predict calving ease. The EPD for birth weight uses calculations that remove the variables caused by environment, producer differences, or even methods of weighing (This is also true of the other EPD figures). Because of these reasons we would encourage you, if birth weight is an area of concern in your selection process, to utilize the BW EPD rather than the actual birth weight when making comparisons between animals (especially if they are from different herds).

If you are concerned about the calving ease of an animal's offspring, we would encourage you to focus less on the BW EPD and look more to the Calving Ease Direct EPD. Calving Ease Direct takes into account additional factors, other than just birth weight, which impact dystocia and calving difficulty. This EPD is expressed as a percentage of unassisted births from an animal's offspring. For example: if the CED EPD for bull A is +16.3 and bull B is +11.3 you could expect heifers bred to Bull A to have 5% more unassisted births than if the same heifers were bred to Bull B.

We recognize that the actual birth weights of the cattle at Parke Ranch are quite possibly higher than are listed in other operations. We believe that this is because of some of the reasons we have discussed above. We have used enough proven herd sires in our program that we have confidence in the accuracy and predictability of our Birth Weight EPD numbers. The reports we have received from past customers continue to validate this belief. Each year we analyze our actual birth weights and castrate any bulls who we have concern might not be safe for use on any mature cows. We also sell as feeders any heifer calves who have excessive birth weights. In an effort to share all of the information we have in helping you with your selection, we have listed the average actual birth weights of a dam's offspring. We have also designated in the catalog the bulls we feel confident may be suitable for use in breeding heifers. We scored these potential heifer bulls with a star system. The 4 star bulls are those that we are the most confident in for use on heifers and the 1 star bulls are those we feel would work on some larger heifers. We are always willing to answer any questions you may have regarding our program or any specific sale animal.



452Y	252Y x Spartacus	483/6	SCORE 8+	B/D 2/26/16
U.S. 99	BCS 6	MILK 6	DISPO Good	
91 SpacA-P	W 1 Flat 1	Bal 1	FTL 1/4 TD 1	RTL 1
L 3 D 3 T 3 H 4	Bal 3	SCORE 3	Fem 3	B/D 2/26/17
90 U.S. 99	BCS 7	MILK 6	DISPO Good	
0 SpacA-P	W 1 Flat 1	Bal 1	FTL 1/2 TD 1	RTL 1/4
L 2 D 4 T 2 H 4	Bal 2	SCORE 3	Fem 3	B/D 2/29/18
89 U.S. 99	BCS 7	MILK 6	DISPO Good	
0 SpacA-P	W 1 Flat 1	Bal 1	FTL 1/2 TD 1	RTL 1/4
L 2 D 4 T 2 H 4	Bal 1	SCORE 9	Fem 2	B/D 2/21/19
85 U.S. 99	BCS 7	MILK 6	DISPO Good	
0 SpacA-P	W 1 Flat 1	Bal 1	FTL 1/2 TD 1	RTL 1/4
L 2 D 4 T 2 H 4	Bal 1	SCORE 9	Fem 2	Good Good

P 35 PRK LIFELINE 195L \$3,800

Bull	Hom Black	Scurred	5/8 SA 3/8 AN		reg: S756570				
Born	BW	205 Wt	Index	11/6 Wt	WDA	Frame			
2/16/2023	78	664	99	810	3.08	4.8			
SRS ELEMENT 4154E SRS GUIDELINE 7126G *SRS LACE 7126E		SRS BENCHMARK 8105B SRS MORGAN 4154B SRS BOTTOM LINE 978B SRS LACE 3179A		Dam's Production BW 1@78 WW 1@99 Udder 7-8					
MAC F1 ENDURO 43E PRK REPLICIA 195J PRK REPLICIA 765E		CONNEALY COMRADE 1385 MAC CARINA 176C MJB ELWAY 322C PRK REPLICIA 365A							
CED	BW	WW	YW	MWW	Milk	Marb	REA	Doc	Stay
+13.8	-3.1	+59	+84	+48	+18	+0.2	+0.48	+18	+15

★★ Potential Heifer Bull • Quad Polled

- Another moderate framed Guideline son who is light birth weight with some thickness and shape.
- Mother is a good milking, deep ribbed 2 year old.

P 36 PRK LILLARD 685L \$3,400

Bull	Black	Polled	1/2 SA 1/2 AN		reg: P756560				
Born	BW	205 Wt	Index	11/6 Wt	WDA	Frame			
3/10/2023	93	681	102	792	3.29	5.2			
SRS ELEMENT 4154E SRS GUIDELINE 7126G *SRS LACE 7126E		SRS BENCHMARK 8105B SRS MORGAN 4154B SRS BOTTOM LINE 978B SRS LACE 3179A		Dam's Production BW 6@98 WW 6@102 Udder 8-8					
PRK BONSAI 993B PRK PRIMROSE 685D PRK RRIMROSE 188Y		SRS ZEUS 0509Z PRK HONOR 993W PRK TONKA 298T PRK PRIMROSE 983W							
CED	BW	WW	YW	MWW	Milk	Marb	REA	Doc	Stay
+10	-0.9	+61	+86	+50	+20	+0.1	+0.47	+20	+16

Quad Polled

- A square made, moderate bull with lots of top and hip.
- The Primrose cow is doing a good job in our herd with 2 previous quality bulls.
- She is also the grand dam to the lot #7 bull.

P 37 PRK LUIGI 159L \$3,400

Bull	Hom Black	Polled	1/2 SA 1/2 AN		reg: P756663				
Born	BW	205 Wt	Index	11/6 Wt	WDA	Frame			
2/14/2023	86	647	96	830	3.13	4.7			
SRS GUIDELINE 7126G PRK JURY 976J PRK LADY 976G		SRS ELEMENT 4154E *SRS LACE 7126E *SRS UNITED 0653U PRK LADY 766E		Dam's Production BW 1@86 WW 1@96 Udder 9-8					
MAC F1 ENDURO 43E PRK KIT 159J PRK KIT 699D		CONNEALY COMRADE 1385 MAC CARINA 176C DJF BORDER LINE 815A *PRK KIT 999W							
CED	BW	WW	YW	MWW	Milk	Marb	REA	Doc	Stay
+15.2	-3.5	+55	+80	+46	+18	+0.1	+0.42	+18	+17

★ Potential Heifer Bull • Quad Polled

- Smaller framed bull with good thickness of quarter and lots of rib for a moderate birth weight.
- Very nicely designed, long, and thick young female with good milk and disposition.
- She is a maternal sister to the dam of lot #13 and from the popular Kit cow family.

P 38 PRK LUNAR 670L \$3,800

Bull	Hom Black	Polled	1/2 SA 1/2 AN		reg: P756578				
Born	BW	205 Wt	Index	11/6 Wt	WDA	Frame			
3/26/2023	99	727	108	840	3.73	6.0			
SRS DYNASTY 667D SRS GENERAL 4180G SRS JULIET 4180B		CONNEALY GREELEY *SRS FINICKY 0838U SRS GUNSLINGER 605Z SRS JULIET 0218M		Dam's Production BW 6@88 WW 6@102 Udder 8-8					
*SRS UNITED 0653U PRK ROSEBUD 670D PRK ROSEBUD 470B		SRS SAINT 0218S *SRS STARR 0653S SRS SPARTACUS 0670Z PRK ROSEBUD 070X							
CED	BW	WW	YW	MWW	Milk	Marb	REA	Doc	Stay
+12.7	+0.7	+69	+100	+51	+17	+0.1	+0.53	+7	+19

Triple Polled

- The youngest bull in the sale and one of the highest WDA bulls.
- Lunar resembles his sire, General, with tremendous volume and capacity.
- His attractively designed mother is an easy fleshing, good milking female who has produced 4 replacement females in our herd and is the grand dam to lot #49.

Full Brother to Lot 36



PRK Knockout 685K • September 2022

P 39 PRK LANDLORD 932L \$3,400

Bull	Hom Black	Polled	5/8 SA 3/8 AN		reg: P756583				
Born	BW	205 Wt	Index	11/6 Wt	WDA	Frame			
3/8/2023	91	692	103	786	3.23	5.6			
SRS DYNASTY 667D SRS GENERAL 4180G SRS JULIET 4180B		CONNEALY GREELEY *SRS FINICKY 0838U SRS GUNSLINGER 605Z SRS JULIET 0218M		Dam's Production BW 3@78 WW 3@100 Udder 8-8					
PRK DURACELL 252D PRK BRIDGER 932G PRK BRIDGER 718E		DJF BORDER LINE 815A PRK ROBBIE 252Z SRS CINCH 0778C PRK BRIDGER 509C							
CED	BW	WW	YW	MWW	Milk	Marb	REA	Doc	Stay
+14.1	-0.7	+68	+102	+49	+15	+0.1	+0.59	+6	+16

Quad Polled

- A nicely designed and attractively patterned bull.
- Dam is a long bodied and balanced female with great milk.

Sire of Lots 38 & 39



SRS General 4180G • September 2022



P 40 PRK LANCELOT 048L \$3,800

Bull	Hom Black	Polled	3/8 SM	3/8 SA	1/4 AN	reg: P756705	
Born	BW	205 Wt	Index	11/6 Wt	WDA	Frame	
2/26/2023	91	667	99	856	3.38	5.5	

J BAR J NIGHTRIDE 25Z
GW TRIPLE CROWN 018C
 GW MISS GPRD 359A

GW PREMIUM BEEF 021TS
 J BAR J MISS ND 793X
 GW PREDESTINED 701T
 GW MISS PREM BEEF 240Y

MAC EARTHQUAKE 158E
PRK GINA 048H
 PRK GINA 481B

MAC CENTENNIAL 167C
 MAC ZINNIA 207Z
 SRS ZEUS 0509Z
 PRK GINA 081X

Dam's Production	
BW	2@87
WW	2@100
Udder	9-9

CED	BW	WW	YW	MWW	Milk	Marb	REA	Doc	Stay
+13.6	-0.8	+72	+112	+51	+16	+0.3	+0.91	+20	+17

Quad Polled

- A well put together and balanced bull in both phenotype and numbers.
- His dam is a gorgeous young cow from the great Gina cow family.
- Her first calf is a top bred heifer in our herd and she is a maternal sister to the lot #59 bull.



P 41 PRK LAKER 1916L \$3,800

Bull	Hom Black	Polled	3/8 SM	3/8 AN	1/4 SA	reg: P756703	
Born	BW	205 Wt	Index	11/6 Wt	WDA	Frame	
2/28/2023	90	668	100	856	3.41	5.9	

J BAR J NIGHTRIDE 25Z
GW TRIPLE CROWN 018C
 GW MISS GPRD 359A

GW PREMIUM BEEF 021TS
 J BAR J MISS ND 793X
 GW PREDESTINED 701T
 GW MISS PREM BEEF 240Y
 CONNEALY BIG TIME 1251 7743
 SRS COLUMBIA 4108B
 SRS AMERICAN 0472A
 PRK HOLLY 794T

SRS ENTITY 4108E
PRK HOLLY 1916G
 PRK HOLLY 594C

Dam's Production	
BW	3@89
WW	3@98
Udder	8-9

CED	BW	WW	YW	MWW	Milk	Marb	REA	Doc	Stay
+14.5	-1.7	+72	+117	+52	+16	+0.4	+0.86	+22	+17

Quad Polled

- Here is a deep bodied, big middled Triple Crown son.
- The Triple Crown sons seem to do really well on feed the last couple of years.
- The Holly cow is a well made and attractive female who milks really well.



P 42 PRK LINCHPIN 196L \$4,200

Bull	Hom Black	Polled	3/8 SM	3/8 AN	1/4 SA	reg: P756706	
Born	BW	205 Wt	Index	11/6 Wt	WDA	Frame	
2/11/2023	78	681	102	894	3.34	5.0	

J BAR J NIGHTRIDE 25Z
GW TRIPLE CROWN 018C
 GW MISS GPRD 359A

GW PREMIUM BEEF 021TS
 J BAR J MISS ND 793X
 GW PREDESTINED 701T
 GW MISS PREM BEEF 240Y

MAC F1 ENDURO 43E
PRK LADY 196J
 PRK LADY 666D

CONNEALY COMRADE 1385
 MAC CARINA 176C
 SRS SPARTACUS 0670Z
 PRK LADY 466B

Dam's Production	
BW	1@78
WW	1@102
Udder	9-8

CED	BW	WW	YW	MWW	Milk	Marb	REA	Doc	Stay
+15.6	-2.3	+75	+117	+56	+19	+0.5	+0.85	+18	+18

★★★ Potential Heifer Bull • Quad Polled

- Linchpin is a longer bodied, good topped Enhancer that carries more muscle expression into his lower quarter.
- His dam is a terrific young female with great thickness and milk.
- She is a maternal sister to a bull we sold in Midland 2021 to Reece & Katelyn Middlemist and she weaned this calf at 67% of her weight.



ENHANCER BULLS



P 43 PRK LARIAT 528L \$4,200

Bull	Hom Black	Polled	3/8 SM	3/8 SA	1/4 AN	reg: P756699	
Born	BW	205 Wt	Index	11/6 Wt	WDA	Frame	
3/1/2023	88	738	110	934	3.74	6.0	

J BAR J NIGHTRIDE 25Z
GW TRIPLE CROWN 018C
 GW MISS GPRD 359A

SRS ARIAT 270A
 • **PRK GINA 528C**
 PRK GINA 308A

GW PREMIUM BEEF 021TS
 J BAR J MISS ND 793X
 GW PREDESTINED 701T
 GW MISS PREM BEEF 240Y
 TOMBSTONE 050
 SRS FOOTLOOSE 9927J
 SRS YUMA 072Y
 PRK GINA 933W

Dam's Production	
BW	7@88
WW	7@109
Udder	7-8

CED	BW	WW	YW	MWW	Milk	Marb	REA	Doc	Stay
+14.3	-2	+78	+120	+57	+18	+0.3	+0.9	+15	+15

Quad Polled

- A big performance Enhancer with a modest birthweight and a very attractive phenotype.
- We expect great things from this herd sire prospect who boasts tremendous spread from birth to yearling.
- His full brother in last years sale posted an on feed gain index of 115 and was a top bull selling to Emil Herbst.
- This gold dam is a very deep, good milking, and easy fleshing female whose 6 calves have all been keepers, including the dam to lot #69.

P 44 PRK LEADOFF 671L \$4,200

Bull	Hom Black	Polled	3/8 SM	3/8 AN	1/4 SA	reg: P756701	
Born	BW	205 Wt	Index	11/6 Wt	WDA	Frame	
2/28/2023	83	681	102	860	3.43	6.0	

J BAR J NIGHTRIDE 25Z
GW TRIPLE CROWN 018C
 GW MISS GPRD 359A

PRK ACE 081A
PRK GLASGOW 671D
 PRK GLASGOW 467B

GW PREMIUM BEEF 021TS
 J BAR J MISS ND 793X
 GW PREDESTINED 701T
 GW MISS PREM BEEF 240Y
 PRK YELLOWSTONE 966Y
 PRK GINA 081X
 SRS ZIP CODE 0174Z
 PRK GLASGOW 167Y

Dam's Production	
BW	6@87
WW	6@104
Udder	5-8

CED	BW	WW	YW	MWW	Milk	Marb	REA	Doc	Stay
+14.8	-2.3	+71	+112	+56	+21	+0.4	+0.86	+21	+18

★ ★ Potential Heifer Bull • Triple Polled

- This potential heifer bull has a little more performance and size along with a very clean design and attractive profile.
- His mother is a feminine, heavy milking female with a very good disposition.
- Triple Crown has sired a couple of sets of high quality calves on our place with very good performance and easy going personalities.
- We are now using a son of his in our AI program, CLRS Herdbook.

Breed Explanations

Optimizer - Term used by the Salers Association to refer to cattle that are crossbred between registered Salers and Angus or Red Angus cattle.

Enhancer - Name we have given to our 3-way cross cattle which are made up of Salers, Simmental, and Angus or Red Angus. We have been using 1/2 to 3/4 Salers X Angus or Red Angus and breeding them to 1/2 to 3/4 Simmental X Angus or Red Angus. We are more concerned with the quality and type of cattle and their beneficial contributions to our program than specific percentages.

We have been breeding Salers cattle for 25 years and prior to that were using Simmental in our commercial herd. We have decided to again incorporate some Simmental genetics into part of our cattle. We feel this can increase the level of hybrid vigor and genetic diversity available to our customers. Simmental can contribute performance, depth, thickness, and rib eye area to their offspring. Salers cattle add calving ease, calf vigor, dressing percentage, fertility, hardiness and a cleaner more eye appealing phenotype. All three of the breeds are very strong in maternal traits and that continues to be a big focus of our breeding program! We plan to continue to breed Salers cattle as well as Optimizers as we increase and develop our Enhancer program.

Full Brother to Lot 43



PRK Kattlemaster 528K • March 2023



ENHANCER BULLS



P 45 PRK LINE DRIVE 0122L \$3,800

Bull	Hom Black	Polled	1/2 AN	3/8 SM	1/8 SA	reg: P756716	
Born	BW	205 Wt	Index	11/6 Wt	WDA	Frame	
2/21/2023	75	675	101	822	3.19	5.0	

GW TRIPLE CROWN 018C
CLRS HERDBOOK 316H
 CLRS ALL XCELLENCE 316A
 MAC F1 ENDURO 43E
PRK UNITY 0122H
 *PRK UNITY 752E

J BAR J NIGHTRIDE 25Z
 GW MISS GPRD 359A
 MCM TOP GRADE 018X
 HOOK'S XCELLENCE 87X
 CONNEALY COMRADE 1385
 MAC CARINA 176C
 MJB ELWAY 322C
 PRK UNITY 552C

Dam's Production	
BW	2@80
WW	2@106
Udder	7-9

CED	BW	WW	YW	MWW	Milk	Marb	REA	Doc	Stay
+14	-2.5	+74	+112	+59	+22	+0.3	+0.9	+15	+18

- ★★ Potential Heifer Bull • Quad Polled
- Line Drive was a standout through the summer for his top and thickness for a moderate framed bull.
 - His young mother is a top female in the herd for her depth, balanced make-up, and great milk.
 - She weaned this calf at over 66% of her body weight and her bull last year was in our top price group.
 - Her dam has achieved gold dam status.

P 46 PRK LEATHERMAN 452L \$4,200

Bull	Black	Polled	1/2 AN	3/8 SM	1/8 SA	reg: P756707	
Born	BW	205 Wt	Index	11/6 Wt	WDA	Frame	
2/24/2023	99	750	112	980	3.84	5.8	

GW TRIPLE CROWN 018C
CLRS HERDBOOK 316H
 CLRS ALL XCELLENCE 316A
 SRS SPARTACUS 0670Z
PRK ROBBIE 452B
 PRK ROBBIE 252Z

J BAR J NIGHTRIDE 25Z
 GW MISS GPRD 359A
 MCM TOP GRADE 018X
 HOOK'S XCELLENCE 87X
 SRS XTRA 0347X
 SRS SEIKO 0670S
 SRS WDA 270W
 PRK ROBBIE 852U

Dam's Production	
BW	7@86
WW	6@100
Udder	9-9

CED	BW	WW	YW	MWW	Milk	Marb	REA	Doc	Stay
+11.9	-0.6	+79	+117	+60	+21	+0.3	+0.9	+20	+20

- Quad Polled
- A herd bull prospect that checks all of the boxes.
 - He packs a tremendous amount of weight into a moderate and attractive package and tops the sale for WDA.
 - Definitely a bull that can add both performance and maternal to his offspring.
 - This cow is unique in how much depth, thickness, and milk she puts into a moderate package.
 - There are generations of easy fleshing, great udder, and highly productive genetics behind this bull.
 - She is a maternal sister to our herdsire, PRK Duracell 252D.
 - She weaned Leatherman at over 60% of her mature body weight.





P 47 PRK LEGACY 667L \$4,200

Bull	Hom Black	Polled	3/8 AN	3/8 SM	1/4 SA	reg: P756709	
Born	BW	205 Wt	Index	11/6 Wt	WDA	Frame	
2/28/2023	95	693	103	858	3.42	5.6	

GW TRIPLE CROWN 018C
CLRS HERDBOOK 316H
 CLRS ALL XCELLENCE 316A

J BAR J NIGHTRIDE 25Z
 GW MISS GPRD 359A
 MCM TOP GRADE 018X
 HOOK'S XCELLENCE 87X

SRS ARIAT 270A
PRK GLASGOW 667D
 PRK GLASGOW 167Y

TOMBSTONE 050
 SRS FOOTLOOSE 9927J
 PRK TONKA 298T
 PRK GLASGOW 547R

Dam's Production	
BW	6@86
WW	6@100
Udder	8-8

CED	BW	WW	YW	MWW	Milk	Marb	REA	Doc	Stay
+10.8	-0.3	+73	+111	+55	+18	+0.2	+0.77	+15	+20

Quad Polled

- Here is a bull that is very smooth made in his design and puts together lots of thickness and balance.
- A no holes prospect that puts it all together.
- A long female that carries lots of rib shape and thickness.
- A very similar looking son last year in the bull pen grew out very well.



PRK Kodak 667K • September 2022

P 48 PRK LUNKER 728L \$3,800

Bull	Hom Black	Scurred	3/8 AN	3/8 SA	1/4 SM	reg: S756711	
Born	BW	205 Wt	Index	11/6 Wt	WDA	Frame	
3/4/2023	107	735	110	930	3.77	5.8	

GW TRIPLE CROWN 018C
CLRS HERDBOOK 316H
 CLRS ALL XCELLENCE 316A

J BAR J NIGHTRIDE 25Z
 GW MISS GPRD 359A
 MCM TOP GRADE 018X
 HOOK'S XCELLENCE 87X

SRS BULLSEYE 592B
• PRK HICKORY 728E
 PRK HICKORY 418B

SRS LINE MOTIVE 9016
 SRS JULIET 0584R
 *OPP SABER 847U
 *PRK HICKORY 823U

Dam's Production	
BW	5@92
WW	5@108
Udder	8-9

CED	BW	WW	YW	MWW	Milk	Marb	REA	Doc	Stay
+8.6	+2	+79	+119	+60	+20	+0.2	+0.97	+13	+18

Quad Polled

- This is a very powerful, thick, and wide based bull that was a stand out from day one.
- A little more birth weight than we usually leave as a bull but don't feel it will be any issue when used on mature cows.
- We kept him because of his quality and how much we love his gold dam mother.
- She is an ideal cow in type and production and weaned Lunker at over 60%.
- She raised our herdsire, PRK GPS, on her first try and has since had another bull and 2 replacement females.
- She is the grand dam of lot #62 and her bred heifer is among the very best of our replacements.



PRK GPS 728G • September 2019



PRK GPS 728G • September 2019



ENHANCER BULLS

P49 PRK LITHIUM 850L \$3,800

Bull	Hom Black	Scurred	3/8 AN	3/8 SM	1/4 SA	reg: S756713	
Born	BW	205 Wt	Index	11/6 Wt	WDA	Frame	
3/3/2023	91	665	99	868	3.5	5.5	

GW TRIPLE CROWN 018C
CLRS HERDBOOK 316H
 CLRS ALL XCELLENCE 316
 PRK DURACELL 252D
PRK ROSEBUD 850F
 PRK ROSEBUD 670D

J BAR J NIGHTRIDE 25Z
 GW MISS GPRD 359A
 MCM TOP GRADE 018X
 HOOK'S XCELLENCE 87X
 DJF BORDER LINE 815A
 PRK ROBBIE 252Z
 *SRS UNITED 0653U
 PRK ROSEBUD 470B

Dam's Production	
BW	4@79
WW	4@96
Udder	8-9

CED	BW	WW	YW	MWW	Milk	Marb	REA	Doc	Stay
+13.8	-1.9	+72	+112	+54	+18	+0.3	+0.84	+18	+18

Quad Polled

- A good patterned and balanced appearing and performing bull.
- His mother is an attractively made, deep sided and long Duracell daughter who milks well.
- She is a maternal sister to the lot #38 bull.
- We selected Herdbook as an AI sire in our Enhancer program because of his clean made phenotype and pedigree.



P50 PRK LEVI 0194L \$3,800

Bull	Hom Black	Polled	3/8 SA	3/8 AN	1/4 SM	reg: P756537	
Born	BW	205 Wt	Index	11/6 Wt	WDA	Frame	
2/23/2023	80	648	97	838	3.27	5.0	

MSR TENACITY 3733A
PRK GPS 728G
 *PRK HICKORY 728E

HOOK'S EAGLE 6E
PRK LASS 0194H
 PRK LASS 644D

CONNELLY CONFIDENCE 0100
 MSR 1206Y OF 9325W SBET
 SRS BULLSEYE 592B
 PRK HICKORY 418B
 HOOK'S BLACK HAWK 50B
 HOOK'S CRYSTAL 1C
 PRK ACE 081A
 *PRK LASS 384A

Dam's Production	
BW	2@76
WW	2@93
Udder	8-8

CED	BW	WW	YW	MWW	Milk	Marb	REA	Doc	Stay
+15.4	-1.5	+67	+101	+50	+16	+0.2	+0.72	+21	+17

★★ Potential Heifer Bull • Quad Polled

- This bull will improve disposition and increase volume and capacity in his calves.
- The Lass cow has unmatched length and depth for a young female and is an easy keeper.



P51 PRK LOCH NESS 0196L \$3,400

Bull	Hom Black	Polled	3/8 SA	3/8 AN	1/4 SM	reg: P756539	
Born	BW	205 Wt	Index	11/6 Wt	WDA	Frame	
2/25/2023	87	685	102	840	3.31	5.6	

MSR TENACITY 3733A
PRK GPS 728G
 *PRK HICKORY 728E

HOOK'S EAGLE 6E
PRK LADY 0196H
 *PRK LADY 1516C

CONNELLY CONFIDENCE 0100
 MSR 1206Y OF 9325W SBET
 SRS BULLSEYE 592B
 PRK HICKORY 418B
 HOOK'S BLACK HAWK 50B
 HOOK'S CRYSTAL 1C
 PRK ACE 081A
 PRK LADY 886U

Dam's Production	
BW	2@87
WW	2@102
Udder	8-9

CED	BW	WW	YW	MWW	Milk	Marb	REA	Doc	Stay
+15.2	-1.3	+67	+95	+54	+20	+0.2	+0.67	+16	+16

Quad Polled

- Lots of thickness and shape to his quarter and top which is typical of the GPS calves.
- This bull could be a great value on sale day as his full brother was a top group bull in last years sale.
- Dam is a very attractively designed, good milking female from the great Lady cow family.

P52 PRK LEONARD 146L \$3,400

Bull	Black	Polled	1/2 AN	3/8 SA	1/8 SM	reg: P756540	
Born	BW	205 Wt	Index	11/6 Wt	WDA	Frame	
2/15/2023	81	643	96	798	3.02	4.8	

MSR TENACITY 3733A
PRK GPS 728G
 *PRK HICKORY 728E

PRK GAMETIME 160G
PRK LADY 146J
 PRK LADY 846F

CONNELLY CONFIDENCE 0100
 MSR 1206Y OF 9325W SBET
 SRS BULLSEYE 592B
 PRK HICKORY 418B
 PRK ENTITY 4108E
 *PRK FLICKA 160Y
 PRK DIABLO 360D
 PRK LADY 466B

Dam's Production	
BW	1@81
WW	1@96
Udder	8-8

CED	BW	WW	YW	MWW	Milk	Marb	REA	Doc	Stay
+16	-1.4	+61	+88	+48	+17	+0.1	+0.48	+17	+16

★★ Potential Heifer Bull • Quad Polled

- A long bodied, smaller framed bull that should work to sire quality calves out of some larger heifers.
- GPS continues to be used AI and in our pastures the last 4 years due to the quality and consistency of his progeny.
- They are moderate framed with great length and thickness of top along with a powerful hip and rear quarter shape.



ENHANCER BULLS



P 53 PRK LAS VEGAS 2195L \$3,800

Bull	Hom Black	Polled	3/8 SM	3/8 SA	1/4 AN	reg: P756542	
Born	BW	205 Wt	Index	11/6 Wt	WDA	Frame	
2/14/2023	87	697	104	866	3.27	5.3	

MSR TENACITY 3733A PRK GPS 728G *PRK HICKORY 728E		CONNEALY CONFIDENCE 0100 MSR 1206Y OF 9325W SBET SRS BULLSEYE 592B PRK HICKORY 418B		Dam's Production BW 1@87 WW 1@104 Udder 9-9					
HOOK'S FULL FIGURES 11F PRK WENDY 2195J PRK WENDY 239Z		TJ DIPLOMAT 294D HOOK'S DOCILA 23D SRS UMPIRE 0584U LBR DAYTONAS FOCUS S609							
CED	BW	WW	YW	MWW	Milk	Marb	REA	Doc	Stay
+16	-1.6	+68	+101	+56	+22	+0.2	+0.71	+21	+15

Quad Polled

- This second generation Enhancer has a lot of capacity along with lots of length and width down his top.
- His calving ease numbers indicate he could be used on some larger heifers.
- His mother is a long and deep bodied 2 year old who is a maternal sister to the dam of lot #2.

P 55 PRK LOGIC 627L \$4,200

Bull	Hom Black	Polled	1/2 SA	3/8 AN	1/8 SM	reg: P756533	
Born	BW	205 Wt	Index	11/6 Wt	WDA	Frame	
3/12/2023	93	703	105	838	3.51	5.6	

MSR TENACITY 3733A PRK GPS 728G *PRK HICKORY 728E		CONNEALY CONFIDENCE 0100 MSR 1206Y OF 9325W SBET SRS BULLSEYE 592B PRK HICKORY 418B		Dam's Production BW 6@90 WW 6@107 Udder 6-6					
SRS BENCHMARK 8105B *PRK HICKORY 627D PRK HICKORY 418B		SRS ZEUS 0509Z *SRS SHANNON 8105U *OPP SABER 847U *PRK HICKORY 823U							
CED	BW	WW	YW	MWW	Milk	Marb	REA	Doc	Stay
+14.9	-0.3	+69	+101	+54	+19	+0.1	+0.61	+12	+16

Quad Polled

- A younger calf with a bright future.
- He possesses a very thick and square hip along with the length of GPS.
- He boasts 4 gold dams in his pedigree including his high performing mother.
- She is quite likely the deepest bodied mature cow in the herd with lots of length and good milk and disposition.
- She has 3 previous bulls we have sold in our sales with an average 109 yearling index.

P 54 PRK LONE PEAK 424L \$3,800

Bull	Black	Polled	1/2 SA	3/8 AN	1/8 SM	reg: P756530	
Born	BW	205 Wt	Index	11/6 Wt	WDA	Frame	
3/11/2023	102	735	110	860	3.58	5.8	

MSR TENACITY 3733A PRK GPS 728G *PRK HICKORY 728E		CONNEALY CONFIDENCE 0100 MSR 1206Y OF 9325W SBET SRS BULLSEYE 592B PRK HICKORY 418B		Dam's Production BW 8@82 WW 8@101 Udder 7-8					
*SRS UNITED 0653U PRK MONANA 424B PRK MONTANA 807U		SRS SAINT 0218S *SRS STARR 0653S DJF ROLEN 5002R PRK MONTANA LASS 507R							
CED	BW	WW	YW	MWW	Milk	Marb	REA	Doc	Stay
+14.7	-0.1	+62	+89	+50	+19	+0	+0.6	+19	+18

Quad Polled

- A GPS son with a little more size along with great length and thickness and super performance.
- Dam is a proven cow with several daughters in the herd and a top bull in our 2020 sale.
- She carries tremendous depth of rib along with good milk and a super personality.



ENHANCER BULLS



P 56 PRK LOTTERY 883L \$4,200

Bull	Hom Black	Scurred	1/2 SA 3/8 AN 1/8 SM		reg: UP756536	
Born	BW	205 Wt	Index	11/6 Wt	WDA	Frame
3/1/2023	92	724	108	926	3.7	5.5

MSR TENACITY 3733A
PRK GPS 728G
 *PRK HICKORY 728E

CONNEALY CONFIDENCE Q100
 MSR 1206Y OF 9325W SBET
 SRS BULLSEYE 592B
 PRK HICKORY 418B

PRK DURACELL 252D
PRK PIGEON 883F
 PRK PIGEON 673D

DJF BORDER LINE 815A
 PRK ROBBIE 252Z
 SRS BULLSEYE 592B
 PRK PIGEON 873U

Dam's Production	
BW	4@90
WW	4@102
Udder	8-8

CED	BW	WW	YW	MWW	Milk	Marb	REA	Doc	Stay
+14.3	-0.8	+66	+97	+50	+17	+0.1	+0.55	+15	+15

Quad Polled

- This moderate framed meat wagon has as much thickness of quarter as any calf in the sale.
- He is a standout phenotypically with near the top performance for WDA.
- If you want as much performance and pounds as possible without increasing frame size there is no gamble in taking this bull home.
- Dam is another nicely designed Duracell daughter with lots of length and a quality udder.



P 58 PRK LONG RANGE 1517L \$4,200

Bull	Black	Polled	1/2 SA 3/8 AN 1/8 SM		reg: P756610	
Born	BW	205 Wt	Index	11/6 Wt	WDA	Frame
3/3/2023	91	734	109	888	3.58	6.2

HOOK'S EAGLE 6E
PRK HERCULES 615H
 *PRK HIGHLIGHT 615D

HOOK'S BLACK HAWK 50B
 HOOK'S CRYSTAL 1C
 MAC F1 HUMBOLDT 312Z
 PRK HIGHLIGHT 409B

SRS YAHTZEE 996Y
 *PRK JANUARY 1517C
 *PRK JANUARY 267Z

SRS UPRISING 0059U
 *SRS KRISTY 0996W
 SRS WDA 270W
 *PRK JANUARY 329N

Dam's Production	
BW	7@87
WW	7@105
Udder	7-7

CED	BW	WW	YW	MWW	Milk	Marb	REA	Doc	Stay
+12.6	-0.8	+78	+115	+63	+24	+0.2	+0.85	+12	+17

Quad Polled

- Here is a bull with style and great eye appeal with a little more size and super length.
- His EPD profile is above average in every area including carcass and he has great performance indexes.
- Maternal should be great as his pedigree is filled with gold dams including both his dam and grand dam.
- His mother carries as much thickness and body condition as any female in the herd while also milking great.
- Her first calf was a Midland graduate in 2018 sale who had above average indexes in every measured category.



P 57 PRK LUSTER 031L \$4,200

Bull	Black	Scurred	5/8 SA 1/4 AN 1/8 SM		reg: S756617	
Born	BW	205 Wt	Index	11/6 Wt	WDA	Frame
2/20/2023	78	676	101	830	3.2	5.6

HOOK'S EAGLE 6E
PRK HERCULES 615H
 *PRK HIGHLIGHT 615D

MAC F1 ENDURO 43E
PRK BIRCH 031H
 PRK BIRCH 611D

HOOK'S BLACK HAWK 50B
 HOOK'S CRYSTAL 1C
 MAC F1 HUMBOLDT 312Z
 PRK HIGHLIGHT 409B

CONNEALY COMRADE 1385
 MAC CARINA 176C
 SRS YARDMARKER 166Y
 PRK BIRCH 020X

Dam's Production	
BW	1@78
WW	1@101
Udder	9-9

CED	BW	WW	YW	MWW	Milk	Marb	REA	Doc	Stay
+14.9	-2.6	+71	+106	+55	+19	+0.2	+0.83	+16	+16

★★★ Potential Heifer Bull • Quad Polled

- This smooth shouldered, long spined and deep sided bull will make a great heifer bull while still siring calves that will perform well.
- His young dam is a thick made female with a high quality udder and good disposition.



ENHANCER BULLS

P59 PRK LAND ROVER 481L \$3,400

Bull	Red	Scurred	1/2 SA 3/8 AN 1/8 SM		reg: S756609	
Born	BW	205 Wt	Index	11/6 Wt	WDA	Frame
3/5/2023	87	721	108	884	3.59	5.5

HOOK'S EAGLE 6E
PRK HERCULES 615H
 *PRK HIGHLIGHT 615D

SRS ZEUS 0509Z
PRK GINA 481B
 PRK GINA 081X

HOOK'S BLACK HAWK 50B
 HOOK'S CRYSTAL 1C
 MAC F1 HUMBOLDT 312Z
 PRK HIGHLIGHT 409B
 SITZ UNCOMMON
 *PRK MISS MONTANA 503R
 SRS UNREAL 0151U
 PRK GINA 9713G

Dam's Production	
BW	8@86
WW	8@99
Udder	8-8

CED	BW	WW	YW	MWW	Milk	Marb	REA	Doc	Stay
+14.9	-2.7	+70	+102	+56	+21	+0.2	+0.76	+19	+17

Quad Polled

- The only red Enhancer in the sale, Land Rover, has lots of performance in a powerful package that maybe isn't as smooth as most.
- The Gina cow is moderate sized with good milk who holds her body condition well.
- She is part of a cow family with great longevity and has a full sister to this bull in our bred heifer group.



P61 PRK LEVERAGE 9193L \$3,800

Bull	Black	Scurred	3/8 AN 3/8 SA 1/4 SM		reg: S756614	
Born	BW	205 Wt	Index	11/6 Wt	WDA	Frame
3/1/2023	74	637	95	802	3.21	5.8

HOOK'S EAGLE 6E
PRK HERCULES 615H
 *PRK HIGHLIGHT 615D

MSR TENACITY 3733A
PRK HONOR 9193G
 PRK HONOR 793E

HOOK'S BLACK HAWK 50B
 HOOK'S CRYSTAL 1C
 MAC F1 HUMBOLDT 312Z
 PRK HIGHLIGHT 409B
 CONNEALY CONFIDENCE 0100
 MSR 1206Y OF 9325W SBET
 PRK CAPTAIN 098C
 PRK HONOR 993W

Dam's Production	
BW	3@71
WW	3@94
Udder	8-8

CED	BW	WW	YW	MWW	Milk	Marb	REA	Doc	Stay
+18.1	-5.5	+64	+94	+52	+20	+0.2	+0.7	+17	+16

★★★★ Potential Heifer Bull • Quad Polled

- This should be a highly predictable calving ease sire while still giving you a set of calves with some growth and great maternal.
- The dam is a moderate sized female that is correct in her design and weaned him at over 57% of her body weight.
- Her first 2 calves made the bull sale and in our replacement pen of bred heifers.



P60 PRK LEGO 693L \$4,200

Bull	Hom Black	Polled	1/2 SA 3/8 AN 1/8 SM		reg: P756611	
Born	BW	205 Wt	Index	11/6 Wt	WDA	Frame
3/4/2023	91	710	106	856	3.47	5.7

HOOK'S EAGLE 6E
PRK HERCULES 615H
 *PRK HIGHLIGHT 615D

SRS ZEUS 0509Z
PRK HONOR 693D
 PRK HONOR 993W

HOOK'S BLACK HAWK 50B
 HOOK'S CRYSTAL 1C
 MAC F1 HUMBOLDT 312Z
 PRK HIGHLIGHT 409B
 SITZ UNCOMMON
 *PRK MISS MONTANA 503R
 SRS SEQUEL 0122S
 PRK HONOR 345N

Dam's Production	
BW	6@88
WW	6@106
Udder	7-7

CED	BW	WW	YW	MWW	Milk	Marb	REA	Doc	Stay
+13.5	-1.7	+72	+105	+58	+22	+0.3	+0.79	+12	+17

Quad Polled

- A bull with great thickness and performance while maintaining a clean and attractive phenotype.
- Hercules was a top selling bull in our 2020 sale to Bruce and Heidi Thurgood.
- He had a 114 YW index and is likely one of the highest performance bulls we have raised.
- We are really excited about his 2 calf crops as they are moderate birth weight with lots of performance and his daughters are attractive broody looking females.

ENHANCER BULLS

Maternal Brother to Lot 62



PRK Kerosene 0198K • September 2022

Dam of Lot 64



PRK Hannah 729E • August 2018

P 62 PRK LERWICK 0198L \$3,400

Bull	Hom Black	Polled	5/8 SM	1/4 AN	1/8 SA	reg: P756721	
Born	BW	205 Wt	Index	11/6 Wt	WDA	Frame	
2/27/2023	90	685	102	792	3.14	5.4	

BRIDLE BIT ECLIPSE E744		BRIDLE BIT CALVARY C503		Dam's Production BW 2@85 WW 2@105 Udder 7-7					
HOOK'S GALILEO 210G HOOK'S EVITA 18E		BRIDLE BIT MISS A327 HOOK'S BEACON 56B HOOK'S YUMA 49Y							
S D S GRADUATE 006X		HOOKS SHEAR FORCE 38K							
PRK HICKORY 0198H *PRK HICKORY 728E		S D S QUEEN 814U SRS BULLSEYE 592B PRK HICKORY 418B							
CED	BW	WW	YW	MWW	Milk	Marb	REA	Doc	Stay
+15.5	-1.5	+76	+117	+65	+27	+0.6	+0.76	+10	+19

Quad Polled

- A second generation Enhancer with very good EPD profile.
- His mother is a very long bodied female that milks well and had a good bull in last years sale.
- She is a maternal sister to the lot #48 bull.

Dam & Maternal Brother to Lot 63



PRK Freight 561F

P 63 PRK LAMBORGHINI 561L \$4,200

Bull	Hom Black	Polled	3/8 SM	3/8 SA	1/4 AN	reg: P756718	
Born	BW	205 Wt	Index	11/6 Wt	WDA	Frame	
3/3/2023	72	683	102	832	3.35	5.5	

BRIDLE BIT ECLIPSE E744		BRIDLE BIT CALVARY C503		Dam's Production BW 7@86 WW 7@106 Udder 6-8					
HOOK'S GALILEO 210G HOOK'S EVITA 18E		BRIDLE BIT MISS A327 HOOK'S BEACON 56B HOOK'S YUMA 49Y							
SRS AMERICAN 0472A		PRK YELLOWSTONE 966Y							
*PRK RHONDA 561C *PRK RHONDA 541R		SRS PONDERA 0472P *SRS NOKIA 9722N PRK NANCY 347N							
CED	BW	WW	YW	MWW	Milk	Marb	REA	Doc	Stay
+19.6	-4.1	+67	+101	+64	+30	+0.6	+0.57	+18	+18

***** Potential Heifer Bull • Quad Polled**

- Here is another very reliable Enhancer heifer bull with a great deal of style and eye appeal who still has above average performance.
- If you are looking to improve maternal here is a bull with great milk numbers and generations of gold dams.
- The Rhonda cow is a gold dam who is easy fleshing and thick made.
- She has raised 2 other top bulls and 3 retained females with her heifer in this years replacements being one of the best.

P 64 PRK LIMITED 729L \$3,800

Bull	Black	Polled	3/8 SM	3/8 SA	1/4 AN	reg: P756719	
Born	BW	205 Wt	Index	11/6 Wt	WDA	Frame	
3/8/2023	85	634	95	802	3.3	5.6	

BRIDLE BIT ECLIPSE E744		BRIDLE BIT CALVARY C503		Dam's Production BW 5@83 WW 5@97 Udder 8-7					
HOOK'S GALILEO 210G HOOK'S EVITA 18E		BRIDLE BIT MISS A327 HOOK'S BEACON 56B HOOK'S YUMA 49Y							
DJF BORDER LINE 815A		C-BAR EVOLUTION 107Y							
PRK HANNAH 729E PRK HANNAH 419B		*STCY UNITY 815U *SRS UNITED 0653U PRK HANNAH 219Z							
CED	BW	WW	YW	MWW	Milk	Marb	REA	Doc	Stay
+16.2	-1.7	+71	+110	+58	+22	+0.6	+0.55	+22	+17

***** Potential Heifer Bull • Quad Polled**

- Limited is a well made and very balanced bull that should make some great females.
- His dam is hard to find any fault with phenotypically as she is very smooth and balanced in her design.
- Her 3 daughters are all in the herd and her only other bull sold in our 2020 sale to Kerry Doney.



Maternal Brother to Lot 63



PRK Freight 561F • September 2018

ENHANCER BULLS



P 65 PRK LEXUS 951L \$4,200

Bull	Hom Black	Polled	3/8 AN	3/8 SM	1/4 SA	reg:	P756720
Born	BW	205 Wt	Index	11/6 Wt	WDA	Frame	
3/4/2023	93	721	108	872	3.53	5.8	

BRIDLE BIT ECLIPSE E744
HOOK'S GALILEO 210G
 HOOK'S EVITA 18E

BRIDLE BIT CALVARY C503
 BRIDLE BIT MISS A327
 HOOK'S BEACON 56B
 HOOK'S YUMA 49Y

SRS SPARTACUS 0670Z
PRK GINA 951G
 PRK GINA 781E

SRS XTRA 0347X
 SRS SEIKO 0670S
 MJB ELWAY 322C
 PRK GINA 081X

Dam's Production	
BW	3@91
WW	3@106
Udder	9-9

CED	BW	WW	YW	MWW	Milk	Marb	REA	Doc	Stay
+15.3	-0.7	+77	+115	+65	+27	+0.7	+0.59	+17	+20

Quad Polled

- An Enhancer who has unlimited potential in looks, pedigree and numbers.
- He is very long sided with terrific depth and great performance.
- This cow is another great Gina female who is one of our very favorite young cows.
- She is good milking, great uddered, easy going, and has ideal size and balance.
- She weaned Lexus at over 61% of her weight and had a top bull in our 2021 sale that sold to Dan Underm.

P 66 PRK LOOKOUT 2198L \$4,200

Bull	Hom Black	Polled	1/2 AN	3/8 SA	1/8 SM	reg:	P757427
Born	BW	205 Wt	Index	11/6 Wt	WDA	Frame	
2/12/2023	79	698	104	850	3.18	5.0	

MJB GLADIATOR 305B
PRK GOVERNOR 187G
 PRK JULIE 187Y

SRS SPARTACUS 0670Z
 *MJB BARBIE 126Z
 *SRS UNITED 0653U
 PRK JULIE 787T

TFS DUE NORTH 2659Z
PRK CRIMSON 2198J
 PRK CRIMSON 9106G

HOOKS SHEAR FORCE 38K
 TFS 1/4 SM 3/4 AN 8419T
 MSR TENACITY 3733A
 PRK CRIMSON 616D

Dam's Production	
BW	1@79
WW	1@104
Udder	9-9

CED	BW	WW	YW	MWW	Milk	Marb	REA	Doc	Stay
+13.7	-3.3	+61	+89	+51	+20	+0.2	+0.52	+12	+15

★★★ Potential Heifer Bull • Quad Polled

- This is a calving ease bull with good weaning performance and as much style and look as you can put in one.
- His very moderate framed, deep bodied, and good milking 2 year old dam weaned him at an amazing 76% of her body weight with no creep.
- Governor was a top selling bull in our 2019 production sale to Jim Wilson and we have been using him a little AI for several years.

Maternal Brother to Lot 65



PRK Juneau 951J • September 2021

Sire of Lot 66 & 80



PRK Governor 187G • March 2020

ENHANCER BULLS

P 67 PRK LOYAL 2176L \$4,200

Bull	Hom Black	Polled	1/2 SA 3/8 AN 1/8 SM			reg: P756523	
Born	BW	205 Wt	Index	11/6 Wt	WDA	Frame	
3/3/2023	89	734	109	854	3.44	5.8	

SRS BULLSEYE 592B
PRK FLINT 198F
 *PRK VIRGINIA 198Y

SRS JULIET 0584R
 SRS WANTED 0218W
 PRK VIRGINIA 898U

TFS DUE NORTH 2659Z
PRK HICKORY 2176J
 PRK HICKORY 626D

HOOKS SHEAR FORCE 38K
 TFS 1/4 SM 3/4 AN 8419T
 *SRS UNITED 0653U
 PRK HICKORY 326A

Dam's Production	
BW	1@89
WW	1@109
Udder	9-9

CED	BW	WW	YW	MWW	Milk	Marb	REA	Doc	Stay
+15.8	-1.4	+62	+90	+46	+15	+0.2	+0.51	+27	+16

Quad Polled

- A lower percentage Simmental Enhancer who has great length and balance from his sire, Flint.
- He also has a lot of thickness over his top and into his quarter and a gentle demeanor.
- Dam is a nicely designed 2 year old with great thickness and an ideal udder and disposition.



P 68 PRK LINEUP 2188L \$4,200

Bull	Black	Polled	1/2 SA 3/8 AN 1/8 SM			reg: P756526	
Born	BW	205 Wt	Index	11/6 Wt	WDA	Frame	
2/10/2023	93	699	104	900	3.35	5.2	

SRS BULLSEYE 592B
PRK FLINT 198F
 *PRK VIRGINIA 198Y

HOOK'S EAGLE 6E
PRK HICKORY 2188J
 PRK HICKORY 418B

SOO LINE MOTIVE 9016
 SRS JULIET 0584R
 SRS WANTED 0218W
 PRK VIRGINIA 898U

HOOK'S BLACK HAWK 50B
 HOOK'S CRYSTAL 1C
 *OPP SABER 847U
 *PRK HICKORY 823U

Dam's Production	
BW	1@93
WW	1@104
Udder	8-8

CED	BW	WW	YW	MWW	Milk	Marb	REA	Doc	Stay
+16.3	-1.4	+70	+103	+51	+16	+0.2	+0.77	+26	+16

Quad Polled

- A bull that was a stand out in the 2 year old group since birth.
- Tremendous volume and thickness of quarter in this moderate framed and disposition improver.
- Dam is an Enhancer with an excellent personality who milks heavily.
- She is the thickest made and highest capacity 2 year old with great fleshing ability.



P 69 PRK LEOPOLD 2178L \$3,800

Bull	Hom Black	Polled	1/2 SA 3/8 AN 1/8 SM			reg: P756572	
Born	BW	205 Wt	Index	11/6 Wt	WDA	Frame	
2/24/2023	77	718	107	816	3.2	5.4	

SRS ELEMENT 4154E
SRS GUIDELINE 7126G
 *SRS LACE 7126E

SRS BENCHMARK 8105B
 SRS MORGAN 4154B
 SRS BOTTOM LINE 978B
 SRS LACE 3179A
 T.J. DIPLOMAT 294D
 HOOK'S DOCILA 23D

HOOK'S FULL FIGURES 11F
PRK GINA 2178J
 *PRK GINA 528C

SRS ARIAT 270A
 PRK GINA 308A

Dam's Production	
BW	1@77
WW	1@107
Udder	9-9

CED	BW	WW	YW	MWW	Milk	Marb	REA	Doc	Stay
+14.6	-3.9	+66	+96	+56	+23	+0.2	+0.69	+17	+14

★★★ Potential Heifer Bull • Quad Polled

- Here is a calving ease bull that won't sacrifice weaning performance.
- His 2 year old mother is a very nicely made female that is very strong in the maternal traits and comes from a gold dam .
- She is a maternal sister to the lot #43 bull in the sale.
- Please note that this bull got an ulcer in his eye this fall that appears to be healing up well and shouldn't be an issue moving forward.

Genomic Testing Project

This fall we became part of the Salers Cattle Drive genomic project. This project was established to improve the genetic predictions of the females in the Salers database. Ultimately this project will help increase the accuracy levels of the EPDs of the Salers breed and the cattle that are tested.

In August, while ultra sounding our cow herd for pregnancy we collected and submitted 340 DNA samples on the active registered females in our herd and later this fall we will collect and submit DNA on the bred heifers being put back into production. The major reason we decided to take the time and invest financially in order to participate in this project is to improve the accuracy of the data we are supplying to you, our customers. Genotyping our cow herd will not necessarily make their EPD's appear better from a numerical stand point, but it will improve their accuracy. This will allow you to have more confidence that you are truly getting what the EPDs predict for how an animal's offspring will perform. In simple terms, for example, the genotyping of a specific animal will make the accuracy level of their BW EPD be equal to that of an animal that has had birth weights reported on 22 offspring. This will allow EPDs to be significantly more accurate at an earlier age. This should improve the chance of any positive changes you are hoping to have with your breeding decisions when using EPDs as a selection tool.



P 70 PRK LINK 900L \$4,200

Bull	Hom Black	Polled	3/4 SA	1/4 AN	reg: P756561				
Born	BW	205 Wt	Index	11/6 Wt	WDA	Frame			
3/3/2023	89	705	105	864	3.48	5.8			
SRS ELEMENT 4154E		SRS BENCHMARK 8105B							
SRS GUIDELINE 7126G		SRS MORGAN 4154B							
*SRS LACE 7126E		SRS BOTTOM LINE 978B							
MAC EARTHQUAKE 158E		SRS LACE 3179A							
PRK TWILIGHT 900G		MAC CENTENNIAL 167C							
*PRK TWILIGHT 928W		MAC ZINNIA 207Z							
		*SRS NOKIA 9722N							
		LYZS TWILIGHT 28T							
		Dam's Production							
		BW 3@89							
		WW 3@101							
		Udder 7-7							
CED	BW	WW	YW	MWW	Milk	Marb	REA	Doc	Stay
+12.8	-2.4	+60	+83	+51	+21	-0.1	+0.57	+19	+15

Quad Polled

- Link is a 75% Salers that could add new genetics to some purebred females along with some added thickness of top and muscle expression of quarter.
- His dam is an easy going and heavy milking female out of a gold dam.



P 71 PRK LOTTO 409L \$4,200

Bull	Black	Scurred	PUREBRED		reg: S756638				
Born	BW	205 Wt	Index	11/6 Wt	WDA	Frame			
2/28/2023	95	688	103	826	3.29	5.8			
*SRS OUTBACK 0809X		TSB OUTBACK 132U							
MAC HOMESTEAD 126H		SRS AURA 0809U							
*MAC VERDA 171X		MAC F1 SAMURAI 70S							
KEYS ZODIAC 20Z		MAC UMATILLA 168U							
PRK HIGHLIGHT 409B		KEYS LONGSHOT 1X							
PRK HIGHLIGHT 109Y		MISS KEY ESTELLE 10N							
		SRS UMPIRE 0584U							
		PRK HIGHLIGHT 509R							
		Dam's Production							
		BW 8@86							
		WW 8@100							
		Udder 7-7							
CED	BW	WW	YW	MWW	Milk	Marb	REA	Doc	Stay
+10.4	+0.9	+63	+86	+48	+16	-0.1	+0.74	+14	+15

- Lotto is a purebred herd sire prospect who is extremely attractive in his pattern and design.
- He is clean made with a good top and thick quarter and easy going.
- His proven mother is very long and balanced in her make up.
- She milks well and has a good disposition and is the grand mother to our Hercules bull.

P 72 PRK LAKOTA 034L \$4,200

Bull	Hom Black	Polled	3/4 SA	1/4 AN	reg: P756589				
Born	BW	205 Wt	Index	11/6 Wt	WDA	Frame			
2/27/2023	97	788	118	942	3.74	6.0			
ECR ELECTRON 712E OF 48T		TSB HUNTER 10C							
JSR CHEMISTRY 921		*OPP BLACK LADY 48T							
*JSR MS ROCKY 338A		CCC/MARX UPWARD 0512							
MAC EARTHQUAKE 158E		JSR MS JAMACA 762							
PRK FLICKA 034H		MAC CENTENNIAL 167C							
PRK FLICKA 634D		MAC ZINNIA 207Z							
		SRS ARIAT 270A							
		PRK FLICKA 343A							
		Dam's Production							
		BW 2@94							
		WW 2@114							
		Udder 8-8							
CED	BW	WW	YW	MWW	Milk	Marb	REA	Doc	Stay
+10.8	+1.8	+71	+105	+51	+16	-0.1	+0.68	+8	+12

Quad Polled

- Power and Performance in this 75% Salers herd sire prospect.
- Lakota was our top indexing bull at weaning and one of the top WDA bulls we have in the sale.
- He has tremendous length and is very deep sided.
- His young dam has gotten off to a terrific start with her first calf going to Midland last year.
- He finished the test with a 108 Midland index and was a top seller at \$7,000 to the Rugg Ranch.

Maternal Brother to Lot 72



PRK Karat 034K • April 2023

Sire of Lot 71



MAC Homestead 126H • February 2021

P 73 PRK LIONHEART 708L \$3,800

Bull	Red	Scurred	7/8 SA	1/8 AN	reg: S756586	
Born	BW	205 Wt	Index	11/6 Wt	WDA	Frame
3/6/2023	94	670	100	842	3.44	6.0

ECR ELECTRON 712E OF 48T
JSR CHEMISTRY 921
 *JSR MS ROCKY 338A

TSB HUNTER 10C
 *OPP BLACK LADY 48T
 CCC/MARX UPWARD 0512
 JSR MS JAMACA 762

NJF BOULDER 46B
PRK TWILIGHT 708E
 PRK TWILIGHT 108Y

NJF TOP LEVEL 41T
 NJF MISS MERCURY 292Z
 SRS WYOMING 9939W
 *PRK TWILIGHT 928W

Dam's Production	
BW	5@80
WW	4@95
Udder	7-7

CED	BW	WW	YW	MWW	Milk	Marb	REA	Doc	Stay
+13.8	-0.4	+63	+91	+46	+14	-0.2	+0.69	+7	+11

Quad Polled

- Red high percentage Salers with good length and thickness over his top and into his quarter.



P 74 PRK LYNX 108L \$4,200

Bull	Red	Polled	3/4 SA	1/4 AN	reg: P757425	
Born	BW	205 Wt	Index	11/6 Wt	WDA	Frame
2/16/2023	83	654	98	812	3.09	5.4

SRS GUIDELINE 7126G
PRK JURY 976J
 PRK LADY 976G

SRS ELEMENT 4154E
 *SRS LACE 7126E
 *SRS UNITED 0653U
 PRK LADY 766E

MAC FRONTIER 184F
PRK GINA 108J
 PRK GINA 308A

MAC DECADE 140D
 MAC YORANN 258Y
 SRS YUMA 072Y
 PRK GINA 933W

Dam's Production	
BW	1@83
WW	1@98
Udder	7-8

CED	BW	WW	YW	MWW	Milk	Marb	REA	Doc	Stay
+17.5	-4.1	+54	+74	+45	+18	+0	+0.55	+14	+16

★★★ Potential Heifer Bull • Quad Polled

- This red 75% Salers bull will work great on heifers.
- He has very good length and some shape to his top and quarter.
- The Gina 2 year old dam has tremendous length coupled with good volume and milk.
- She is a maternal sister to the dam of lot #43.

P 75 PRK LION 026L \$3,800

Bull	Red	Polled	PUREBRED	reg: P757929		
Born	BW	205 Wt	Index	11/6 Wt	WDA	Frame
2/23/2023	98	683	102	790	3.09	6.0

MAC ANDERS 29A
PRK GOLD RUSH 213G
 PRK MONTANA 213Z

MAC CENTURION 240X
 *WJM URIAH 249U
 TSB OUTBACK 132U
 PRK MONTANA 813U

MAC FRONTIER 184F
PRK HICKORY 026H
 PRK HICKORY 716E

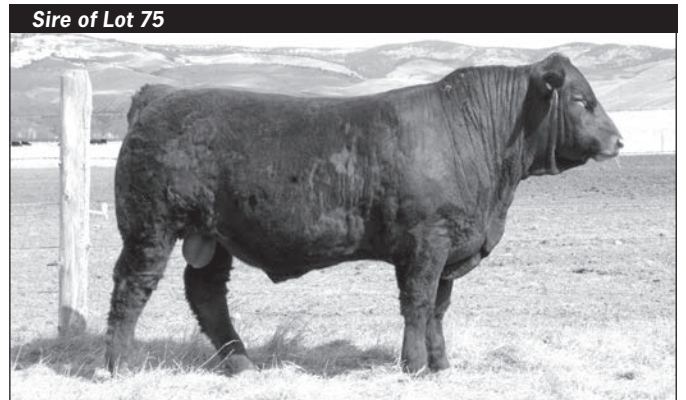
MAC DECADE 140D
 MAC YORANN 258Y
 SRS BULLSEYE 592B
 PRK HICKORY 116Y

Dam's Production	
BW	2@93
WW	2@100
Udder	9-8

CED	BW	WW	YW	MWW	Milk	Marb	REA	Doc	Stay
+11.6	-0.1	+53	+77	+41	+14	-0.1	+0.67	+14	+19

Quad Polled

- Purebred bull with lots of body length and a clean made profile.
- His young dam is doing a good job with her first calf, a full sister to this bull, making the replacement pen.



PRK Gold Rush 213G • March 2020



Parke Ranch Elite Heifer Calves

New this year we are offering some of our very best registered replacement heifer calves. We feel these heifers are truly elite for their potential to become great production females in any herd as well as having the look and style to have a competitive show career for any young person. We have selected heifers that represent our breeding program and are a sampling of our different herd sires in use. Most are out of young dams with our newest genetics. We are feeding these heifers a few pounds of pellets since weaning in early October. We have tried to price them so young people might afford a quality female to get started with or add to their growing herd. We definitely feel this is a great opportunity considering the bright future of the cattle industry.



80 PRK RIBBON 375L \$2,500

Heifer	Black	Polled	1/2 SA	1/2 AN	reg: 758477	
Born	BW	205 Wt	Index	11/6 Wt	WDA	Frame
2/18/2023	82	644	106	762.00	2.92	6.00

MJB GLADIATOR 305B
PRK GOVERNOR 187G
PRK JULIE 187Y

SRS SPARTACUS 0670Z
*MJB BARBIE 126Z

SRS UNITED 0653U
PRK JULIE 787T

Dam's Production
BW 1 @ 82

SRS GUIDELINE 7126G
PRK RIBBON 175J
PRK RIBBON 575C

SRS ELEMENT 4154E
*SRS LACE 7126E

SRS SPARTACUS 0670Z
PRK RIBBON 348A

Udder 8-9

CED	BW	WW	YW	MWW	Milk	Marb	REA	Doc	Stay
+11.6	-0.5	+64	+89	+49	+17	+0.1	+0.50	+14	+16

Quad Polled

- This great prospect combines super length, excellent thickness, and wonderful depth in a very balanced and attractive profile.
- She is extremely smooth made and blends all of her thirds in a unique package.
- Ribbon was accidentally weaned off of her mother in the cold of late February and then grafted on another cow who raised her through the summer (We listed her WW index within the herd even though officially it is 100).
- 2 year old dam is a moderate, long made Guideline female.
- Grandmother is a super female in our program and great grand dam is still in production as well.
- Governor definitely added his clean made profile and style to this daughter.



81 PRK PRIMROSE 3128L \$2,500

Heifer	Black	Polled	1/2 SA	1/2 AN	reg: 758457	
Born	BW	205 Wt	Index	11/6 Wt	WDA	Frame
2/11/2023	82	698	115	788.00	2.94	5.70

SRS GUIDELINE 7126G
PRK JURY 976J
PRK LADY 976G

SRS ELEMENT 4154E
*SRS LACE 7126E

*SRS UNITED 0653U
PRK LADY 766E

Dam's Production
BW 1 @ 82

MJB VELOCITY 414E
PRK PRIMROSE 168J
PRK PRIMROSE 968G

KEYS RETRIBUTION 18B
MJB MARY 134C

SRS DOMINO 155D
PRK PRIMROSE 588C

WW 1 @ 115
Udder 9-8

CED	BW	WW	YW	MWW	Milk	Marb	REA	Doc	Stay
+13.2	-3.7	+55	+81	+45	+18	+0.2	+0.46	+12	+16

Quad Polled

- Here is a powerful female that has been an eye catcher all summer.
- Typical of the Jury females she has tremendous volume, depth of flank and thickness over her top and into her quarter while still maintaining a clean and attractive front third.
- 2 year old Velocity sired dam is long and balanced and off to a great start.
- She weaned this heifer at 62% of her body weight and bred back AI.
- Grand dam is very attractively designed and deep ribbed and also has a top end heifer calf this year.

82 PRK JEWEL 3146L \$2,500

Heifer	Black	Polled	1/2 SA	1/2 AN	reg: 758468	
Born	BW	205 Wt	Index	11/6 Wt	WDA	Frame
2/15/2023	86	672	110	770.00	2.92	5.80

MJB ELWAY 322C
PRK FULLBACK 280F
*PRK ROSEBUD 280Z

MAC QUARTERBACK 58Y
*MJB YELLOW ROSE 156Z

SRS XPERT 0881X
PRK ROSEBUD 070X

Dam's Production
BW 1 @ 86

PRK FLINT 198F
PRK JEWEL 2146J
PRK JEWEL 946G

SRS BULLSEYE 592B
*PRK VIRGINIA 198Y

SRS CINCH 0778C
*PRK JEWEL 746E

WW 1 @ 110
Udder 8-9

CED	BW	WW	YW	MWW	Milk	Marb	REA	Doc	Stay
+15	-1.7	+61	+86	+45	+15	+0.1	+0.49	+23	+17

- Jewel is an extremely long bodied and level topped female with very good extension and a powerful hip.
- Another great weaning index on this powerful female.
- Her dam is another Flint daughter who has a nicely designed udder with very good milk and a super personality.
- She is a very attractively put together female who bred up early after weaning this big heifer at 63% of her body weight.
- Grand dam on both sides have achieved gold dam status.

P 83 PRK KIT 3149L \$2,500

Heifer	Red	Polled	1/2 SA	1/2 AR	reg: 758397	
Born	BW	205 Wt	Index	11/6 Wt	WDA	Frame
2/24/2023	85	633	104	768.00	3.01	6.10

PIE CINCH 4126 MAC F1 JUDSON 96J MAC GEMMA 374G	LSF SAGA 1040Y TKP BONNE BEL 110 MAC ATOMIC FORCE 36A *MAC ZAILA 109Z C-BAR EVOLUTION 107Y *STCY UNITY 815U SRS ZEUS 0509Z *PRK KIT 999W	Dam's Production BW 4 @ 91 WW 4 @ 110 Udder 7-7
DJF BORDER LINE 815A • PRK KIT 899F PRK KIT 599C		

CED	BW	WW	YW	MWW	Milk	Marb	REA	Doc	Stay
+13.1	-1.2	+67	+100	+56	+23	-0.1	+0.42	+22	+15

Quad Polled

- Here is a great prospect out of a proven female and terrific cow family.
- This heifer is as long as the day with a very extended front and balanced profile.
- She is a full sib in blood to the lot #25 bull.
- Her mother is a gold dam who has raised a couple of top end bulls in our sale, including the high seller in the 2021 sale to the Mentzer Ranch.
- Lots of maternal, thickness, and volume in this cow family.
- The first Judson calves are very attractively designed and extremely long spined.

P 84 PRK MONTANA 3184L \$2,500

Heifer	Black	Polled	3/8 AN	3/8 SA	1/4 SM	reg: 758437	
Born	BW	205 Wt	Index	11/6 Wt	WDA	Frame	
2/23/2023	88	651	107	744.00	2.91	6.10	

GW TRIPLE CROWN 018C CLRS HERDBOOK 316H CLRS ALL XCELLENCE 316A	J BAR J NIGHTRIDE 25Z GW MISS GPRD 359A MCM TOP GRADE 018X HOOK'S XCELLENCE 87X SRS SPARTACUS 0670Z *MJB BARBIE 126Z MAC F1 HUMBOLDT 312Z PRK MONTANA 424B	Dam's Production BW 2 @ 89 WW 1 @ 107 Udder 9-8
MJB GLADIATOR 305B PRK MONTANA 054H *PRK MONTANA 624D		

CED	BW	WW	YW	MWW	Milk	Marb	REA	Doc	Stay
+10.8	-0.2	+79	+119	+61	+22	+0.3	+0.96	+17	+17

Quad Polled

- An Enhancer heifer with possibly the most show ring look and style, with a very clean made design and lots of extension.
- A very attractive and feminine constructed heifer that still carries thickness throughout.
- In addition to the phenotype she has an excellent set of numbers to back it up.
- Dam is a beautiful young female that is moderate framed, deep, with a great look and good milk.
- Grand mother is a gold dam who had a great heifer calf this year and the great grand dam has a bull that sells as lot #54.

P 85 PRK JASMINE 3172L \$2,500

Heifer	Black	Polled	1/2 SA	1/4 SM	1/4 AN	reg: 758469	
Born	BW	205 Wt	Index	11/6 Wt	WDA	Frame	
2/10/2023	76	674	111	788.00	2.93	5.60	

HOOK'S EAGLE 6E PRK HERCULES 615H *PRK HIGHLIGHT 615D	HOOK'S BLACK HAWK 50B HOOK'S CRYSTAL 1C MAC F1 HUMBOLDT 312Z PRK HIGHLIGHT 409B MSR TENACITY 3733A *PRK HICKORY 728E SRS YAKIMA 9118YY PRK JASMINE 194Y	Dam's Production BW 1 @ 76 WW 1 @ 111 Udder 9-9
PRK GPS 728G PRK JASMINE 2174J *PRK JASMINE 394A		

CED	BW	WW	YW	MWW	Milk	Marb	REA	Doc	Stay
+14.2	-1.7	+73	+108	+59	+22	+0.2	+0.78	+18	+16

Quad Polled

- This second generation Enhancer posts tremendous spread from birth to weaning.
- She is a moderate framed female with great shape through her middle and into her powerful quarter.
- This female combines 2 top Enhancer sires which we have bred here on our ranch as well as 3 gold dams in her pedigree.
- Her dam is a really long female who has a great udder and she bred back AI after raising this big heifer.
- Jasmine's sire, PRK Hercules, is siring tremendous performance and good dispositions in his deep bodied and thick offspring.



HEIFER CALVES

Tri-County Fair

August 2023 marked the 19th consecutive year that at least one of the Parke children exhibited cattle at the Tri-County Fair in Deer Lodge, MT. This is most likely a streak that is over for a few years, as it was probably Scott's last and it will be a few before the next generation gets started. The next generation will be the 4th of the Parke Family to exhibit cattle at the Tri-County Fair. It has truly been a great experience and opportunity and a wonderful learning environment! We greatly appreciate the many who have made this all possible! The 4-H program and experience teaches so many worthwhile lessons for life.

Scott had a successful year with the 5 head he exhibited this year. His Optimizer yearling heifer, PRK Lass 297L, was a purple ribbon winner and stood 2nd in the yearling heifer class of more than 15 head. She was also named Champion Crossbred

Heifer. His market steer, PRK Alvin 971K, an Optimizer sired by SRS Guideline also received a purple ribbon. He ended up placing 3rd for the market steer show and was awarded the Champion Locally Grown and Ranch Raised (top non club bred steer) Awards. He also showed a 2-year-old Optimizer female and bull calf. They were awarded Reserve Champion Female Beef as well as Reserve Champion Male Beef over all breeds. We are proud of the fact that we have been competitive in the steer show over the years while exhibiting our own cattle that are from our breeding program. Most of all we are excited that our breeding cattle have excelled in the show ring and even more importantly they have all been bred and gone on to make productive cows in the real world! 11 times over the last 15 years a Parke bred female has won either Grand or Reserve Champion Female Beef at the Tri-County Fair. We definitely believe the heifer calves we are offering in this sale have that potential as well.



Parke Ranch Bred Females

These females were born, developed, and bred here on Parke Ranch. The bred heifers were weaned last Fall and ran on meadow regrowth for 45 days. They were developed through the winter on long stem grass/alfalfa hay. They have not received any concentrates or supplements other than mineral. These females sell as commercial females even though many of them are registered females and siblings to bulls selling in this and past sales. They are bred to sires we use in our herd for both AI and clean-up bulls. You can find most of their service sires listed following the female lots or in the Reference Sire section before the bull lots. They were ultra-sounded for calving dates in August after a 70-day breeding season. We have sorted the females into smaller groups by calving dates, breed, and phenotype. They will sell in the silent auction along with the bulls. The female groups have base prices listed with each group on a per head basis. The bidding will proceed with \$25 per head bid increases until the close of the sale at 2 pm on Dec. 13th, in the same format as the bulls. We would ask that you make arrangements to pick up your females by the end of the year. A video of the female lots will be available on our website, or you may come at any time to view the females.

P Group A - Bred Heifers

\$2,500

Number	Sire	Color	% Salers	Bred To	Due Date	Calf %	Average WT
188Y	MAC Enduro	Black	1/2	PRK Klassic	2/12	5/8	10/24/23
308G	MJB Headliner	Black	PB	PRK Flint	2/14	3/4	1145 lbs
509G	SRS General	Black	3/4	PRK Flint	3/4	5/8	
712Y	SRS Dundee	Black	3/4	PRK Kenworth	2/21	5/8	
858G	MAC Enduro	Black	5/8	PRK Flint	2/13	5/8	
920G	MJB Headliner	Black	7/8	PRK Flint	2/13	3/4	

P Group B - Bred Heifers

\$2,500

Number	Sire	Color	% Salers	Bred To	Due Date	Calf %	Average WT
035G	SRS Hoosier	Black	5/8	PRK Jury	2/11	5/8	10/24/23
387Y	MAC Enduro	Black	1/2	PRK Fullback	2/19	1/2	1090 lbs
743Y	MAC Enduro	Black	1/2	PRK Jury	2/16	1/2	
773Y	PRK Duracell	Black	1/2	PRK Fullback	2/19	1/2	
841G	DJF Garner	Black	1/2	PRK Flint	2/20	1/2	
952Y	MAC Enduro	Black	1/2	PRK GPS	2/14	Enhancer	

P Group C - Bred Heifers

\$2,500

Number	Sire	Color	% Salers	Bred To	Due Date	Calf %	Average WT
041G	SRS Forward	Black	5/8	PRK Hercules	2/10	Enhancer	10/24/23
082Y	PRK Flint	Black	1/2	PRK Klondike	2/20	Enhancer	1055 lbs
555Y	DJF Garner	Black	1/2	PRK Flint	2/10	1/2	
575Y	MAC Enduro	Black	1/2	PRK Klondike	2/13	Enhancer	
886G	PRK Duracell	Black	5/8	PRK Klondike	2/12	Enhancer	
933B	DJF Garner	Black	5/8	PRK Flint	2/19	5/8	

BRED FEMALES

Group D - Bred Heifers

\$2,500

Number	Sire	Color	% Salers	Bred To	Due Date	Calf %	Average WT
187Y	Gibbs Super Duty	Black	Enhancer	PRK GPS	2/14	Enhancer	10/24/23
199G	Hooks Full Figures	Black	Enhancer	PRK Hercules	2/20	Enhancer	1120 lbs
553G	PRK GPS	Black	Enhancer	PRK Jury	2/25	Enhancer	
846G	PRK GPS	Black	Enhancer	PRK Kenworth	2/19	Enhancer	
879G	Gibbs Super Duty	Black	Enhancer	PRK Kenworth	3/12	Enhancer	

Group E - Bred Heifers

\$2,500

Number	Sire	Color	% Salers	Bred To	Due Date	Calf %	Average WT
1974G	ECR Holt	Red	1/2	PRK Jury	3/9	1/2	10/24/23
526G	TSB Outback	Red	PB	PRK Jury	2/26	3/4	1120 lbs
708G	SRS Umpire	Red	PB	PRK Jury	3/12	3/4	
901Y	SRS Umpire	Red	PB	MAC Judson	3/3	3/4	

Group F - Bred Heifers

\$2,500

Number	Sire	Color	% Salers	Bred To	Due Date	Calf %	Average WT
0100G	PRK Flint	Black	1/2	PRK GPS	3/12	Enhancer	10/24/23
172Y	DJF Garner	Black	1/2	PRK Jury	3/11	1/2	1040 lbs
184Y	SRS General	Black	1/2	PRK Flint	3/3	1/2	
336B	MAC Enduro	Black	5/8	PRK Flint	3/7	5/8	
343G	SRS Dundee	Black	1/2	PRK Jury	3/12	1/2	

Group G - Bred Heifers

\$2,500

Number	Sire	Color	% Salers	Bred To	Due Date	Calf %	Average WT
305Y	SRS Umpire	Red	PB	MAC Judson	3/16	3/4	10/24/23
703Y	PRK Hondo	Red	PB	PRK Jury	3/12	3/4	1040 lbs
859G	PRK Duracell	Red	1/2	PRK Jury	3/21	1/2	
927Y	SRS Hoosier	Red	5/8	PRK Jury	3/20	5/8	

Group H - Bred Heifers

\$2,450

Number	Sire	Color	% Salers	Bred To	Due Date	Calf %	Average WT
0101G	SRS Angus	Black	1/4	PRK Jury	3/24	3/8	10/24/23
155Y	PRK Duracell	Black	1/2	PRK Jury	3/16	1/2	1095 lbs
693Y	TSF Due North	Black	Enhancer	PRK Flint	3/25	Enhancer	
877Y	PRK Flint	Black	1/2	MAC Judson	3/21	1/2	

Group I - Bred Heifers

\$2,450

Number	Sire	Color	% Salers	Bred To	Due Date	Calf %	Average WT
042Y	PRK Gold Rush	Black	7/8	PRK Kenworth	3/27	3/4	10/24/23
061Y	PRK Governor	Black	5/8	PRK Flint	3/31	5/8	1128 lbs
219Y	PRK Flint	Black	3/4	PRK Klondike	3/28	Enhancer	
594G	MAC Enduro	Black	1/2	PRK Klondike	3/27	Enhancer	
928Y	Triple Crown	Black	Enhancer	PRK GPS	3/29	Enhancer	

Group J - Bred Heifers

\$2,400

Number	Sire	Color	% Salers	Bred To	Due Date	Calf %	Average WT
0136G	SRS Angus	Black	1/4	PRK Flint	4/6	3/8	10/24/23
058G	MAC Humboldt	Black	5/8	PRK Jury	4/3	5/8	1125 lbs
451G	SRS Dundee	Black	1/2	PRK Jury	4/2	1/2	
778G	MAC Enduro	Black	1/2	PRK Jury	4/18	1/2	
783Y	SRS Guideline	Black	5/8	PRK Kenworth	4/17	5/8	
805G	PRK Hondo	Black	PB	PRK Jury	4/16	3/4	

Group K - 2-3 Yr Old Cows

\$2,400

Number	Sire	Color	% Salers	Bred To	Due Date	Calf %	Average WT
150Y	SRS General	Black	1/2	MJB Enduro	4/23	1/2	8/25/23
2134Y	PRK Gunslinger	Black	1/2	SRS Hoosier	4/27	1/2	1210 lbs
029G	MAC Earthquake	Black	3/4	PRK Jacuzzi	4/23	5/8	
032Y	MAC Earthquake	Black	3/4	SRS Judge	4/19	5/8	
051G	PRK Flint	Black	1/2	SRS Judge	4/26	1/2	
070Y	GGT Final Choice	Black	5/8	MJB Enduro	4/15	5/8	

Group L - 3-4 Yr Old Cows

\$2,400

Number	Sire	Color	% Salers	Bred To	Due Date	Calf %	Average WT
0190B	SD Graduate	Black	Enhancer	PRK GPS	5/4	Enhancer	8/25/23
956G	PRK Duracell	Black	5/8	PRK Kenworth	4/28	5/8	1365 lbs
980Y	SRS Bullseye	Black	1/2	SRS Judge	4/26	1/2	
9193Y	MSR Tenacity	Black	Enhancer	PRK Klondike	5/4	Enhancer	

Group M - 3-5 Yr Old Cows

\$2,400

Number	Sire	Color	% Salers	Bred To	Due Date	Calf %	Average WT
005Y	MAC Frontier	Red	PB Salers	MAC Enduro	4/16	3/4	8/25/23
0126Y	PRK Flint	Red	1/2	MAC Judson	4/30	1/2	1310 lbs
0464G	McColum	Red	1/2	PRK Jacuzzi	5/7	1/2	
852Y	SRS Benchmark	Red	1/2	PRK Jacuzzi	4/27	1/2	

BRED FEMALES

PRK JURY 976J



Black		Polled		1/2 SA 1/2 AN			reg: 744423		
CED	BW	WW	YW	MWW	Milk	Marb	REA	Doc	Stay
+19.1	-7.2	+47	+64	+43	+20	+0.1	+0.38	+13	+17

PRK KENWORTH 794K



Black		Polled		1/2 SA 1/2 AN			reg: 751171		
CED	BW	WW	YW	MWW	Milk	Marb	REA	Doc	Stay
+15.4	-2.0	+59	+88	+47	+18	+0.2	+0.42	+13	+17

PRK KLASSIC 095K



Hom Black		Polled		5/8 SA 3/8 AN			reg: 751251		
CED	BW	WW	YW	MWW	Milk	Marb	REA	Doc	Stay
+13.2	-2.8	+57	+79	+47	+18	+0.1	+0.40	+19	+16

PRK KLONDIKE 798K



Black		Polled		1/2 AN 3/8 SM 1/8 SA			reg: 751325		
CED	BW	WW	YW	MWW	Milk	Marb	REA	Doc	Stay
+16.5	-2.0	+65	+101	+52	+20	+0.3	+0.51	+22	+18

MAC F1 JUDSON 96J



Red		Hom Polled		1/2 SA 1/2 AR			reg: 748742		
CED	BW	WW	YW	MWW	Milk	Marb	REA	Doc	Stay
+12.5	-1.5	+66	+97	+57	+24	-0.2	+0.35	+21	+17

PRK FULLBACK 280F



Hom Black		Hom Polled		1/2 SA 3/8 AN 1/8 AR			reg: 724622		
CED	BW	WW	YW	MWW	Milk	Marb	REA	Doc	Stay
+12.3	+0.4	+69	+96	+51	+16	+0.2	+0.55	+20	+17



We Believe In . . . Will Represent Honestly . . . And Stand Behind Our Cattle!

Parke Ranch

2023 Maternal Power Production Sale

SILENT AUCTION FORMAT

December 5th thru 13th, 2023

At the Ranch – Drummond, Montana



Parke Ranch
Eaf & Tiffany Parke Family
7 Peppergrass Lane
Drummond, MT 59832

FIRST CLASS

US Postage
Paid
Ballyhoo Printing
59457



FIRST CLASS