

Parke Ranch

2024 Maternal Power Production Sale

SILENT AUCTION FORMAT

December 9th thru 14th, 2024

At the Ranch – Drummond, Montana



Salers, Simmental, and Angus Genetics

143 Head Sell!

78 Bulls

6 Heifers Calves

59 Bred Heifers

ParkeRanch.com



Eaf & Tiffany Parke Family

7 Peppergrass Lane
Drummond, MT 59832

Home 406-288-3573
Eaf cell 406-240-4167
Joseph cell 406-396-0369

parkeranch@gmail.com

www.ParkeRanch.com

It is with great enthusiasm that our family invites you to view our annual sale offering. It is almost unbelievable that this marks our 9th production sale at the ranch and our 28th year of producing seedstock already! We are extremely grateful for each of you who take time to evaluate our program and cattle, whether it's your first look or you have been with us since our beginnings! We invest a great deal of time and effort in planning, working, and evaluating in order to ensure we are offering cattle that will help make your operation profitable and your work enjoyable.

This year's Maternal Power Production Sale will include 75+ bulls, 60 bred heifers, and 6 elite registered heifer calves. We appreciate all of the feedback received from our survey last winter. Because of overwhelming support, we will again offer these cattle in a silent auction format in just a little shorter sale period. There are a few other slight changes to the sale process which you can find on the next page. The sale cattle fall into 3 breed designations: Salers (3/4 to Purebred Salers), Optimizers (1/2 & 5/8 Salers crossed with Angus or Red Angus), and Enhancers (Salers X Angus crossed with Simmental X Angus). They are bred for balance in performance and size with an emphasis on maternal qualities and longevity. If they are going to stay around our place they must have fertility, soundness, good dispositions, milk, quality udder structure, and an appealing phenotype.

It has been an exciting year for our family with some great additions and milestones. Our youngest, Scott, graduated from high school in May after a successful senior year academically and with his athletics (cross country, basketball, and track). In early July he left for Missouri to serve for 2 years as a missionary for The Church of Jesus Christ of Latter-Day Saints. His help and humor have already been missed. In early May, Spencer and Alita had their first baby, a little boy named Bridger Reed. September brought a third child to Joseph and Aubrey's family, Weston Joseph. It is so great to have them all living and helping on the ranch! Melanie and Monson are back in Moore, Idaho and it has been wonderful to have them back on several weekends. Deana is now in her senior year of college and is still on the track that allows her to be home during the winter to help with calving.

We would sure welcome and appreciate any questions or inquiries about the sale offering or our program. If you can find a chance to come to the ranch and view the cattle in person at any time before the sale concludes, we will enjoy showing you the sale cattle and cow herd. We understand it's not always possible to get away and will do all we can to ensure you can make needed purchases with confidence. We will post a video on our website of each lot before the end of November. We are available at any time to discuss your needs, answer questions, and make recommendations if desired. We will guarantee your satisfaction when the cattle get to your place. We look forward to visiting this December and are grateful for your interest and consideration of our program to meet your seedstock needs!

Thank you,
The Parke Family



Parke Ranch

2024 Maternal Power Production Sale

Silent Auction December 9 thru 14, 2024 At the Ranch - Drummond, Montana

SALE PROCEDURE

- Cattle will sell in a silent auction format with bidding opening at noon on Monday Dec. 9th, 2024.
- Bulls and heifer calves have a starting base price which is listed in the catalog. Bred females will sell in small groups with a starting base price on a per head basis.
- Bidders may place a bid at base price on any lot without a bid or raise the bid by a minimum of \$100 on any bull or heifer calf and \$25 on any bred female lots with a current bid. Bidding will be open until the sale closes on Saturday Dec. 14th at 2 pm (Mountain Time).
- 2 changes to our sale procedure this year after receiving customer feedback. When you first contact us to bid you will be assigned a bidder number that will be used on the current bid tracker spreadsheet. The other change is that any bull lot reaching a bid level of \$5,000 will trigger minimum bid increases of \$250 instead of \$100 going forward.
- Bids can only be placed with Eaf or Joseph via phone, text, email, or in person at any time during the sale period.
- Any lots receiving an increasing bid on Saturday Dec. 14th may have an oral bid off at the close of the sale. This would involve the last bidder prior to the 14th and any bidders on the 14th, if they wish to continue bidding. Bid offs will be handled in order of price and as quickly as the contending bidders can be reached after 2 pm.
- Any lots without a bid during the 14th are considered sold to the high bidder when the sale closes at 2 pm on the 14th.
- Any lots without a base bid will be available for sale at the base price at the conclusion of the sale on a first come basis.
- We would encourage bidding early in the sale period to reduce the number of bid offs and to allow you to move to other lots.
- A spreadsheet on our website at www.parkeranch.com will be updated frequently with current bids and bidder number or you may request update notifications if your bidding status changes.

SALE TERMS AND DETAILS

- Females need to be picked up by the buyers by Dec. 31st.
- 1/2 of purchase price is due at sales conclusion with the balance due at delivery.
- Bulls will be fed free of charge and at our risk until delivery, beginning around March 20th.
- Bulls will be delivered free of charge up to 500 miles with any additional mileage at cost.
- All bulls are guaranteed for disposition, structural soundness, and fertility for the first breeding season.
- We will notify you as soon as possible if any bulls are injured in our care or do not pass the semen test. You may select a replacement bull if one is available, future credit, or receive a refund of your initial payment.
- Parke Ranch is retaining 1/3 semen interest on all sale bulls and will collect semen before delivery, at our cost, on any we desire to use in our AI program. You have full salvage value.
- A volume discount of 5% will be given on any purchase of 5 or more bulls.

BULL HISTORY & DEVELOPMENT

- Bulls had actual birthweights taken with a scale at birth.
- They have been raised without creep. Just milk and grass.
- Sale bulls are from the top 33% of our male calves. They were sorted many times based on dam quality, birthweight, disposition, confirmation, performance, and soundness.
- Bulls were weaned on October 5th and are being fed free choice long stem mixed hay and 7 lbs of bull challenger pellets.
- They will be fed for a 2.8 lbs/day gain to grow them out sufficiently while ensuring their soundness and longevity.
- Bulls will be semen tested and vaccinated in March and be ready for turn out when delivered.
- Fall vaccinations included: Vision 8, Pyramid 5, Autogenous Type A, Autogenous Respiratory, Multi-Min, and Footrot. Spring vaccinations: Vision 8, Pyramid 5, Reprostar VL5 HB, & Footrot.

CATALOG DETAILS

- All double black bulls were DNA tested for coat color and those found to be homozygous black are designated in the catalog.
- Lot base prices are found in the upper right hand corner.
- Dams average on calves birthweights and weaning indexes are listed along with her udder score (the first digit represents her udder suspension and the second digit is teat size, with 9 being the best and 1 the worst).
- The listed EPDs are from the American Salers Association.
- Potential Heifer bulls are ranked. (4★ being the most reliable)

CATTLE INSPECTION

- Cattle are available for inspection at any time now or during the sale period. If you desire to call ahead we can make accommodations to improve your viewing experience.
- Have lunch on us. Plan a little extra time when you come to look at cattle and have a famous Parkers Hamburger on us at the restaurant in Drummond (they are closed Sun. & Mon.).
- Exit interstate 90 at Drummond and head south on Hwy #1. After 2.6 miles turn east on Mullan Road and then travel 1.5 miles and our ranch is on the left.

ADDITIONAL INFORMATION

- A link to a video of the individual bulls, heifer calves, and bred females groups will be up on our website before Dec. 1st.
- We will have updated weights and scrotal measurements on all sale bulls at the start of the sale. These will be available on our website or when you come to view the cattle.

We Believe In . . . Will Represent Honestly . . . And Stand Behind Our Cattle!

P Reference Sire

TSB BUBBA 38K

Black Polled 7/8 SA 1/8 AN reg: 753433

ECR ELECTRON 712E OF 48T
JSR CHEMISTRY 9105
JSR MS ROCKY 3248A

KKCC REVELATION 401B
TSB BLOSSOM 162F
TSB JONNA 171A

TSB HUNTER 10C
*OPP BLACK LADY 48T
JCG ROCK 021X
JSR MS PAYDAY 7239
KKCC RESOLUTION 901W
KKCC BP PREDESTINED 705T
SRS WILDCAT 0560W
*MISS KEY DESIGN 121P

CED	BW	WW	YW	MWW	Milk	Marb	REA	Doc	Stay
+11.0	+0.4	+73	+117	+50	+13	+0.0	+0.77	+13	+15

- Our pick and high seller from the 2023 TB Sellers Sale.
- A long bodied, thick quartered, big scrotal and gentle high percentage Sellers herd sire.
- Dam is a clean made, attractive female with a very good udder.
- His first calf crop contained many high quality bulls with great thickness of top and expressive muscled quarters.

TSB BUBBA 38K



P Reference Sire

MAC F1 FREEDOM 150F

Hom Black Hom Polled 1/2 SA 1/2 AN reg: 727868

CONNEALY CONSENSUS 7229
CONNEALY COMRADE 1385
HAPPY GEE OF CONANGA 919

MAC WYNHAM 54W
*MAC AZURE 81A
MAC YAVANNAH 351Y

CONNEALY CONSENSUS
BLUE LILLY OF CONANGA 16
G A R NEW DESIGN 5050
HAP GINA OF CONANGA 260 4965
MAC TOPEKA 159T
MAC TERRI 127T
MAC NAVIGATOR 281N
MAC SAVANNAH 259S

CED	BW	WW	YW	MWW	Milk	Marb	REA	Doc	Stay
+12.4	-0.8	+67	+110	+58	+24	+0.3	+0.60	+16	+14

- Proven Optimizer herd sire from the Doubet bull battery that we used in our AI program.
- Freedom is a very long bodied, clean made, and correct bull out of a terrific gold dam mother.
- Our first calves are moderate framed with very good length and thickness in an attractive package.

MAC F1 FREEDOM 150F



P Reference Sire

MJB PATRIOT 342H

Black Hom Polled 5/8 SA 3/8 AN reg: 737190

CONNEALY COMRADE 1385
MAC F1 FREEDOM 150F
*MAC AZURE 81A

NJF BOULDER 46B
MJB DIAMOND 140F
MJB DAKOTA 152C

CONNEALY CONSENSUS 7229
HAPPY GEE OF CONANGA 919
MAC WYNHAM 54W
MAC YAVANNAH 351Y
NJF TOP LEVEL 41T
NJF MISS MERCURY 292Z
MCD PERFORMER 116
MJB MS CLASSIC 146T

CED	BW	WW	YW	MWW	Milk	Marb	REA	Doc	Stay
+10.9	-0.9	+70	+109	+55	+20	+0.2	+0.28	+11	+14

- Patriot is a Freedom son that Deichman Cattle Co. purchased from Doubet Ranch.
- We have used Patriot AI for a couple of years and then added him to our herd bull battery last year.
- We really like the balance, eye appeal and composition of the Patriot calves and they are moderate birth weight with above average performance.

MJB PATRIOT 342H



P Reference Sire

PRK FLINT 198F

Black Polled 1/2 SA 3/8 AN 1/8 AR reg: 724634

SOO LINE MOTIVE 9016
SRS BULLSEYE 592B
SRS JULIET 0584R

SRS WANTED 0218W
*PRK VIRGINIA 198Y
PRK VIRGINIA 898U

HF KODIAK 5R
TLA BEAUTY 5R
MAC LANSING 302L
SRS JULIET 9609F
S A V 004 DENSITY 4336
SRS JULIET 0218M
SRS NOKIA 9722N
PRK VIRGINIA 298M

CED	BW	WW	YW	MWW	Milk	Marb	REA	Doc	Stay
+22.3	-5.8	+39	+59	+33	+13	+0.2	+0.30	+27	+20

- Flint is an elite calving ease sire that we retained for our herd sire from our 2018 calf crop.
- We now have 146 calves sired by Flint and he is as proven a calving ease bull as we have ever used along with being a disposition improver.
- His biggest contribution is probably his females as they are moderate, easy fleshing, terrific uddered, and great footed and we expect them to be around a long time!

PRK FLINT 198F



P Reference Sire **MAC F1 ENDURO 43E**

Hom Black Hom Polled 1/2 SA 1/2 AN reg: 720903

CONNEALY CONSENSUS 7229
CONNEALY COMRADE 1385
 HAPPY GEE OF CONANGA 919
 S NEBRASKA 330N
MAC CARINA 176C
 MAC WILLOW 134W
 CONNEALY CONSENSUS
 BLUE LILLY OF CONANGA 16
 G A R NEW DESIGN 5050
 HAP GINA OF CONANGA 260 4965
 D LIMITED EDITION 179L
 *S BLACK LADY 50K
 MAC LENNOX 314L
 MAC KESIA 322K

CED	BW	WW	YW	MWW	Milk	Marb	REA	Doc	Stay
+10.5	+0.1	+65	+101	+55	+23	+0.4	+0.33	+15	+18

- Purchased in partnership with Doubet Ranch from MacDonald's 2018 sale and used natural service and AI for 6 years.
- Enduro sires solid, balanced cattle that are deep sided and good footed with good performance for their moderate birth weights.

MAC F1 ENDURO 43E



P Reference Sire **MAC F1 JUDSON 96J**

Red Hom Polled 1/2 SA 1/2 AR reg: 748742

LSF SAGA 1040Y
PIE CINCH 4126
 TKP BONNE BEL 110
 MAC ATOMIC FORCE 36A
MAC GEMMA 374G
 *MAC ZAILA 109Z
 BECKTON EPIC R397 K
 LSF MINOLA T7172 W9041
 HXC CONQUEST 4405P
 TKP BONNE BEL 9031
 MAC CENTURION 240X
 *MAC SHEILA 208S
 MAC TORRINGTON 139T
 MAC REBA 150R

CED	BW	WW	YW	MWW	Milk	Marb	REA	Doc	Stay
+16.5	-2.4	+61	+81	+56	+25	-0.1	+0.21	+20	+18

- We selected and purchased Judson in MacDonald's 2022 Sale as an outcross for our red cattle.
- He is a calving ease sire with great performance, strong maternal numbers and pedigree along with good docility.
- We are looking forward to calving his first daughters this coming Spring.

MAC F1 JUDSON 96J



P Reference Sire **SRS JUDGE 7135J**

Hom Black Hom Polled 1/2 SA 1/2 AN reg: 745635

SRS ENGAGE 4221E
SRS GOVERNOR 4111G
 SRS LACE 4111B
 SRS BENCHMARK 8105B
SRS AURA 7135E
 SRS AURA 4152B
 SITZ BRIGADE 12074
 SRS MANOR 4221B
 SRS YUMA 072Y
 *SRS LACE 0814U
 SRS ZEUS 0509Z
 *SRS SHANNON 8105U
 SRS WDA 575Z
 SRS AURA 0933W

CED	BW	WW	YW	MWW	Milk	Marb	REA	Doc	Stay
+8.9	+0.9	+89	+138	+65	+20	+0.2	+0.90	-2	+18

- Judge was our pick and top selling Optimizer in Skinners 2022 Production Sale to bring a new pedigree into our program.
- Judge is a high performance sire who has great maternal.
- He sires cattle with tremendous length, great depth and volume, along with a little more frame.

SRS JUDGE 7135J



P Reference Sire **PRK KEYSTONE 739K**

Hom Black Polled 1/2 SA 3/8 AN 1/8 SM reg: 751305

HOOK'S EAGLE 6E
PRK HERCULES 615H
 *PRK HIGHLIGHT 615D
 SRS BENCHMARK 8105B
PRK WENDY 739E
 PRK WENDY 239Z
 HOOK'S BLACK HAWK 50B
 HOOK'S CRYSTAL 1C
 MAC F1 HUMBOLDT 312Z
 PRK HIGHLIGHT 409B
 SRS ZEUS 0509Z
 *SRS SHANNON 8105U
 SRS UMPIRE 0584U
 LBR DAYTONAS FOCUS

CED	BW	WW	YW	MWW	Milk	Marb	REA	Doc	Stay
+16.5	-2.4	+77	+111	+57	+18	+0.2	+0.79	+16	+18

- We kept Keystone from our 2022 calf crop as our pick of our Enhancer bulls to carry on the Hercules pedigree.
- Keystone is a very deep bodied, long sided, and extremely thick made bull out of a very good SRS Benchmark female.
- Keystone's first calf crop were lighter birth weight with a nice pattern and very good growth as they had a 106 weaning index.

PRK KEYSTONE 739K



P Reference Sire

GW JAILBREAK 555

Hom Black Hom Polled 5/8 SM 9/32 AN 3/32 AR reg: 3877088

GW MOVIN ON 183C
GW SPARKY 369E
GW MISS CONQUEST 538C

GW PREDESTINED 701T
GW MISS GPRD 038W
GW MISS LUCKY ONE 736R

GW PREMIUM BEEF 021TS
GW MISS PREDESTINED 117Y
HXC CONQUEST 4405P
GW MISS HIGH BET 337A
G A R PREDESTINED
GW MISS LUCKY STRIKE 363
GW LUCKY ONE 686K
GW MISS LUCKY CHARM 114N

CED	BW	WW	YW	MWW	Milk	Marb	REA	Doc	Stay
+15.7	-1.6	+95.3	+151.0	+78.3	+30.8	+0.5	+0.68	+21.2	+18.8

- Jailbreak was used in our AI program to bring in some new genetics for our Enhancer program.
- He was selected for his balanced EPD profile, super phenotype, and knowledge that his dam had consistently raised top end bulls in the Gateway Program.
- His first calves have very good length of body, tremendous rib and volume, along with wonderful dispositions.
- We are very glad that we again used him in our AI program in 2024.

GW JAILBREAK 555



P Reference Sire

PRK KLONDIKE 798K

Black Hom Polled 1/2 AN 1/4 SM 1/4 SA reg: 751325

HOOKS SHEAR FORCE 38K
TFS DUE NORTH 2659Z
TFS 1/4 SM 3/4 AN 8419T

SRS CINCH 0778C
PRK RUTH 798E
PRK RUTH 440B

NICHOLS LEGACY G151
C&D TRACY
MYTTY IN FOCUS
TFS GOOD AS GOLD 0056K 6
SRS ARIAT 270A
SRS PONY TAIL 0778T
SRS UNITED 0653U
PRK RUTH 250Z

CED	BW	WW	YW	MWW	Milk	Marb	REA	Doc	Stay
+14.0	-0.8	+55	+93	+49	+22	+0.3	+0.62	+24	+19

- We kept Klondike from our 2022 bulls to use in our Enhancer program on both heifers and cows.
- His power, volume, thickness and docility coupled with great maternal strength make him usable in so many ways.
- Klondike's terrific SRS Cinch sired dam is an elite cow in our herd for phenotype and production and we selected her to be among the first cows we flushed this past Spring.

PRK KLONDIKE 798K



P Reference Sire HOOK'S FULL FIGURES 11F

Black Hom Polled 3/4 SM 1/4 AN reg: 3403323

MAR INNOVATION 251
TJ DIPLOMAT 294D
TJ 33Y

HOOKS SHEAR FORCE 38K
HOOK'S DOCILA 23D
HOOK'S YONKERS 21Y

CONNEALY IMPRESSION
MAR FINAL KAHUNA 856
RCR STETSON T17
MS MISS 306R
NICHOLS LEGACY G151
C&D TRACY
HOOK'S INFINITI 10UJ
HOOK'S UNITY 2U

CED	BW	WW	YW	MWW	Milk	Marb	REA	Doc	Stay
+16.8	-1.9	+84.7	+133.0	+75.8	+33.6	+0.66	+1.25	+16.2	+15.6

- This is a higher percentage Simmental bull with a red gene that has a terrific EPD profile.
- We went back to using Full Figures in our AI after seeing the quality of his females when they started production.
- He sires moderate birth weight, good performance, tremendous rib dimension, good thickness, and beautiful females.

HOOK'S FULL FIGURES 11F



P Reference Sire

PRK GPS 728G

Hom Black Hom Polled 3/8 AN 3/8 SA 1/4 SM reg: 730893

CONNEALY CONFIDENCE 0100
MSR TENACITY 3733A
MSR 1206Y OF 9325W SBET

SRS BULLSEYE 592B
*PRK HICKORY 728E
PRK HICKORY 418B

CONNEALY TOBIN
BECKA GALA OF CONANGA 8281
DIKEMANS SURE BET
MSR 9325W OF 2094 VOY
SOO LINE MOTIVE 9016
SRS JULIET 0584R
OPP SABER 847U
*PRK HICKORY 823U

CED	BW	WW	YW	MWW	Milk	Marb	REA	Doc	Stay
+15.1	-1.5	+55	+79	+49	+21	+0.1	+0.49	+11	+14

- GPS was retained from our 2019 calf crop as our first Enhancer Herd Sire.
- He possesses lots of length to go with an extremely wide top and powerful hip and muscular quarter and injects this into his offspring.
- His mother is an attractive female who is likely at the top of our herd for efficiency.
- She was selected as part of our donor group this Spring because of her consistency in raising high quality performance offspring.

PRK GPS 728G



EPD and Catalog Explanations

Below is a chart showing the Salers Breed EPD Averages for all 2022 born cattle.

EPDs	CED	BW	WW	YW	MWW	Milk	Marb	REA	Doc	Stay
Breed Av	+12.6	-0.4	+59	+86	+48	+19	+0.1	+0.60	+11	+15

The Salers and Simmental breed associations are both part of the new IGS multi-breed genetic evaluation. This means you can directly compare the Salers, Optimizer, and Enhancer EPDs.

All EPDs in the catalog were current as of Nov. 1st. These are now updated weekly so you may find the most current EPD for any animal by using the American Salers Association website and search with the animal's registration number.

CED (calving ease direct) - Expressed as a % of unassisted births. A bull with a +17.6 would be expected to produce 5% more unassisted births than the average Salers bull when bred to the same cows.

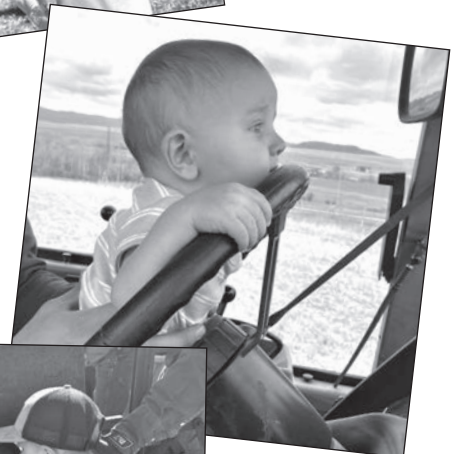
Doc (Docility) - Expressed as a percentage of an animals offspring that would be expected to have mild or restless disposition scores (1 or 2) rather than nervous, flighty, or aggressive scores (3, 4, or 5). A +21 means an animals offspring would be 10% more likely to have mild disposition scores than the breed average.

Stay (Stayability) - Expressed as a percentage of daughters who will remain in the herd until age 6. Cattle with a stayability of +20 would have 5% more daughters remain in the herd until at least age 6 than the average Salers.

Color - Hom. Black (Homozygous Black) bulls were DNA tested and will produce all black offspring when bred to red or black cows. Black - Black hided animal possessing one black and one red gene. When they are bred to black females also with a red gene they will produce 75% black offspring. When bred to red cows they will produce 50% black calves.

Dam's Production - BW Number of calves born and their average actual birth weight in pounds. WW is the number of offspring weaned and their average weaning index. Udder is a two-digit score representing udder suspension and teat size with 9 being ideal. The first digit corresponds to udder suspension tightness and how level the udder floor and quarters are and the second digit represents the teat length, diameter, and shape.

Gold Dam - Used in the footnote comments. A designation from the Salers Association for those females who meet or exceed the following requirements: Calve by the age of 2.3 years, wean a minimum of 3 natural calves each born within a 395 day interval, and their calves must average at least a 105 weaning index. This designation represents the top 2% of registered females.



P 1 PRK MAIN EVENT 020M \$4,500

Bull	Red	Polled	7/8 SA 1/8 AN	reg: P763146
Born	BW	205 Wt	Index	11/6 Wt
3/5/2024	95	772	110	928

ECR ELECTRON 712E OF 48T

JSR CHEMISTRY 921

*JSR MS ROCKY 338A

TSB HUNTER 10C

*OPP BLACK LADY 48T

CCC/MARX UPWARD 0512

JSR MS JAMACA 762

MAC DECADE 140D

MAC YORANN 258Y

*SRS CRIMSON TIDE 0744Z

PRK CRIMSON 305A

MAC FRONTIER 184F

PRK CRIMSON 020H

PRK CRIMSON 520C

Dam's Production

BW **3@87**

WW **3@99**

Udder **9-9**

CED	BW	WW	YW	MWW	Milk	Marb	REA	Doc	Stay
+12.2	+2.6	+71	+105	+50	+15	+0	+7.4	+14	+18

Quad Polled

- He is a very thick topped and quartered herd sire prospect who is balanced and attractive in his phenotype.
- His dam is a long bodied, great looking purebred female who has an excellent udder.
- She is the maternal sister to the Lot 10 bull.
- Chemistry is siring long bodied, thick, and high performing offspring.



P 2 PRK MERCURY 824M \$4,500

Bull	Red	Polled	3/4 SA 1/4 AN	reg: P763144		
Born	BW	205 Wt	Index	11/6 Wt	WDA	Frame
2/27/2024	95	758	108	896	3.54	5.8

ECR ELECTRON 712E OF 48T
 JSR CHEMISTRY 921
 *JSR MS ROCKY 338A

SRS CINCH 0778C
 PRK HEAVENLY 824F
 PRK HEAVENLY 021X

TSB HUNTER 10C
 *OPP BLACK LADY 48T
 CCC/MARX UPWARD 0512
 JSR MS JAMACA 762

SRS ARIAT 270A
 SRS PONY TAIL 0778T
 SRS SAFE BET 9529S
 *PRK HEAVENLY 821U

Dam's Production	
BW	5@82
WW	5@101
Udder	9-9

CED	BW	WW	YW	MWW	Milk	Marb	REA	Doc	Stay
+14.9	+0.3	+62	+98	+48	+17	+0	+4.0	+18	+14

Quad Polled

- Mercury is a second generation 3/4 Salers that has been a standout all summer and a definite herd sire with lots to offer any herd.
- He is long and deep sided with lots of power and a good personality.
- His dam is an extremely deep, thick, moderate balanced female sired by the great female maker, SRS Cinch 0778C.
- We selected his mother to start our Salers donor program this Spring as we feel she is our best proven higher % female.
- Mercury has twin full sisters that are at the top of our bred heifers.

Dam of Lot 2



PRK Heavenly 824F • October 2024

P 3 PRK MOAB 001M \$3,500

Bull	Red	Polled	PUREBRED	reg: P763142		
Born	BW	205 Wt	Index	11/6 Wt	WDA	Frame
3/8/2024	90	731	104	854	3.51	5.3

JSR CHEMISTRY 9105
 TSB BUBBA 38K
 TSB BLOSSOM 162F

MAC FRONTIER 184F
 PRK HEAVENLY 001H
 PRK HEAVENLY 501C

ECR ELECTRON 712E OF 48T
 JSR MS ROCKY 3248A
 KKCC REVELATION 401B
 TSB JONNA 171A

MAC DECADE 140D
 MAC YORANN 258Y
 *SRS OUTBACK 0809X
 PRK HEAVENLY 631S

Dam's Production	
BW	3@91
WW	3@102
Udder	9-8

CED	BW	WW	YW	MWW	Milk	Marb	REA	Doc	Stay
+13.0	-0.1	+62	+92	+47	+16	+0	+7.2	+12	+17

Quad Polled

- A deep ribbed, easy going purebred with good weaning performance.
- His maternal sister is a good looking bred heifer.



P 4 PRK MIDNIGHT 026M \$3,500

Bull	Black	Polled	7/8 SA 1/8 AN	reg: P763139		
Born	BW	205 Wt	Index	11/6 Wt	WDA	Frame
3/5/2024	89	714	102	836	3.40	5.7

JSR CHEMISTRY 9105
 TSB BUBBA 38K
 TSB BLOSSOM 162F

MAC FRONTIER 184F
 PRK HICKORY 026H
 PRK HICKORY 716E

ECR ELECTRON 712E OF 48T
 JSR MS ROCKY 3248A

KKCC REVELATION 401B
 TSB JONNA 171A
 MAC DECADE 140D
 MAC YORANN 258Y
 SRS BULLSEYE 592B
 PRK HICKORY 116Y

Dam's Production	
BW	3@91
WW	3@100
Udder	9-8

CED	BW	WW	YW	MWW	Milk	Marb	REA	Doc	Stay
+10.8	+1.1	+65	+99	+45	+13	+0	+6.1	+13	+18

Quad Polled

- Midnight will add some length of body to his offspring.
- He weaned at 56% of his dam's body weight.

P 5 PRK MUFASA 037M \$3,500

Bull	Black	Polled	7/8 SA 1/8 AR	reg: P763136		
Born	BW	205 Wt	Index	11/6 Wt	WDA	Frame
3/1/2024	87	686	98	792	3.17	5.3

JSR CHEMISTRY 9105
 TSB BUBBA 38K
 TSB BLOSSOM 162F

MAC FRONTIER 184F
 PRK KATHLEEN 037H
 PRK CATHLEEN 637D

ECR ELECTRON 712E OF 48T
 JSR MS ROCKY 3248A

KKCC REVELATION 401B
 TSB JONNA 171A
 MAC DECADE 140D
 MAC YORANN 258Y
 *DJF BORDER LINE 815A
 PRK CATHLEEN 243Z

Dam's Production	
BW	3@91
WW	3@97
Udder	8-7

CED	BW	WW	YW	MWW	Milk	Marb	REA	Doc	Stay
+14.2	-0.2	+63	+98	+45	+14	+0	+6.4	+12	+17

Quad Polled

- A clean made, correct bull with lots of length of spine.
- Dam is a deep middled, long, easy fleshing female with a great disposition.





P 6 PRK MAJOR LEAGUE 1280M \$4,500

Bull						
Bull	Red	Polled	3/4 SA 1/4 AN	reg: P763143		
Born	BW	205 Wt	Index	11/6 Wt	WDA	Frame
3/13/2024	99	770	110	916	3.85	6.1

JSR CHEMISTRY 9105
TSB BUBBA 38K
TSB BLOSSOM 162F

ECR ELECTRON 712E OF 48T
JSR MS ROCKY 3248A

KKCC REVELATION 401B
TSB JONNA 171A

SRS PATENT 0221P
*SRS PRICELESS 0881U

PRK TONKA 298T
PRK ROSEBUD 870U

Dam's Production
BW 11@83
WW 11@105
Udder 7-8

CED	BW	WW	YW	MWW	Milk	Marb	REA	Doc	Stay
+12.6	+0.1	+66	+101	+54	+21	+0	+7.4	+11	+18

Quad Polled

- Here is another red herd sire prospect that checks all the boxes with his numbers, performance, and phenotype.
- The dam is a gold dam that has stood the test of time and continues to be a top producer with another AI calf coming at 13 years of age.
- She has lots of power in a stylish package along with a great personality.
- She has put several females back in the herd and her 3 previous bulls were all top sellers.
- She is the grandmother to the Lot 85 heifer calf.

Dam & Maternal Brother of Lot 6



PRK Fullback 280F • September 2018

P 7 PRK MOTIVE 149M \$4,500

Bull	Black	Polled	3/4 SA 1/4 AN	reg: P763131		
Born	BW	205 Wt	Index	11/6 Wt	WDA	Frame
2/21/2024	87	731	104	950	3.67	6.0

JSR CHEMISTRY 9105
TSB BUBBA 38K
TSB BLOSSOM 162F

ECR ELECTRON 712E OF 48T
JSR MS ROCKY 3248A

KKCC REVELATION 401B
TSB JONNA 171A

CONNEALY COMRADE 1385
MAC CARINA 176C

SRS XTRA 0347X
PRK WENDY 059X

Dam's Production
BW 2@78
WW 2@100
Udder 8-8

CED	BW	WW	YW	MWW	Milk	Marb	REA	Doc	Stay
+12.7	-0.8	+69	+110	+53	+18	+2	+6.1	+13	+17

Quad Polled

- A negative bw epd bull with loads of growth and performance.
- Motive has massive volume and capacity.
- His young dam is a very good female out of a gold dam and her first calf was a top selling heifer bull to Steven Schwend last year.

P 8 PRK MICROSOFT 2110M \$4,000

Bull Hom Black Polled 3/4 SA 1/4 AN reg: P763132						
Born	BW	205 Wt	Index	11/6 Wt	WDA	Frame
2/21/2024	88	714	102	850	3.28	5.4

JSR CHEMISTRY 9105
TSB BUBBA 38K
TSB BLOSSOM 162F

ECR ELECTRON 712E OF 48T
JSR MS ROCKY 3248A

KKCC REVELATION 401B
TSB JONNA 171A

SRS ELEMENT 4154E
*SRS LACE 7126E

PRK DURACELL 252D
PRK ROSEBUD 670D

Dam's Production
BW 2@86
WW 2@106
Udder 9-9

CED	BW	WW	YW	MWW	Milk	Marb	REA	Doc	Stay
+13.1	-1	+61	+98	+48	+17	+1	+6.1	+17	+19

Quad Polled

- Another higher percentage Salers out of Bubba that will be great at infusing some heterosis into a set of English cattle.
- His mother is a moderate framed, attractive made female with lots of thickness and good milk.

P 9 PRK MACRO 2115M \$4,500

Bull	Black	Polled	3/4 SA 1/4 AN	reg: P763133		
Born	BW	205 Wt	Index	11/6 Wt	WDA	Frame
2/22/2024	98	764	109	924	3.58	5.5

JSR CHEMISTRY 9105
TSB BUBBA 38K
TSB BLOSSOM 162F

ECR ELECTRON 712E OF 48T
JSR MS ROCKY 3248A

KKCC REVELATION 401B
TSB JONNA 171A

SRS DYNASTY 667D
SRS JULIET 4180B

SRS BATTALION 0984B
PRK UNITY 555C

Dam's Production
BW 2@87
WW 2@102
Udder 8-8

CED	BW	WW	YW	MWW	Milk	Marb	REA	Doc	Stay
+9.0	+1.1	+73	+109	+52	+16	+1	+6.4	+11	+16

Quad Polled

- A high indexing powerful bull who has a great top and thick quarter while still maintaining a clean attractive design.
- Macro will give your weaning weights a boost without increasing your frame size.
- His young dam is moderate and very deep ribbed with lots of milk and her first calf was a good seller in last year's sale.



P 10 PRK MAXWELL 520M \$3,500

Bull	Black	Polled	7/8 SA 1/8 AN	reg: P763140		
Born	BW	205 Wt	Index	11/6 Wt	WDA	Frame
3/6/2024	103	720	103	818	3.34	5.7

JSR CHEMISTRY 9105
TSB BUBBA 38K
TSB BLOSSOM 162F

ECR ELECTRON 712E OF 48T
JSR MS ROCKY 3248A
KKCC REVELATION 401B
TSB JONNA 171A

Dam's Production
BW 8@94
WW 8@103
Udder 8-8

*SRS CRIMSON TIDE 0744Z
PRK CRIMSON 520C
PRK CRIMSON 305A

SRS WDA 270W
*SRS RAINBIRD 0744T
SRS YAHOO 252Y
PRK CRIMSON 705T

CED	BW	WW	YW	MWW	Milk	Marb	REA	Doc	Stay
+9.5	+1.3	+69	+105	+51	+17	+0	+7.3	+8	+16

Quad Polled

- A higher % Salers bull with a good design and profile.
- The Crimson cow is a beautifully made, easy going female who has lots of thickness and capacity.



P 11 PRK METALLIC 886M \$4,000

Bull	Hom Black	Polled	3/4 SA 1/4 AN	reg: P763141		
Born	BW	205 Wt	Index	11/6 Wt	WDA	Frame
3/6/2024	89	718	102	896	3.66	6.0

JSR CHEMISTRY 9105
TSB BUBBA 38K
TSB BLOSSOM 162F

ECR ELECTRON 712E OF 48T
JSR MS ROCKY 3248A
KKCC REVELATION 401B
TSB JONNA 171A

Dam's Production
BW 5@80
WW 5@102
Udder 9-8

MJB ELWAY 322C
PRK LADY 886F
PRK LADY 886U

MAC QUARTERBACK 58Y
*MJB YELLOW ROSE 156Z
SRS POLICY 9336P
PRK LADY 466P

CED	BW	WW	YW	MWW	Milk	Marb	REA	Doc	Stay
+13.4	-0.6	+61	+89	+48	+18	+1	+5.9	+11	+17

Quad Polled

- Metallic brings good performance with lots of length and a little more frame.
- Dam is a solid cow from a cow family with lots of longevity.



P 12 PRK MAXIMUM 308M \$4,000

Bull	Red	Polled	3/4 SA 1/4 AN	reg: P763252		
Born	BW	205 Wt	Index	11/6 Wt	WDA	Frame
3/11/2024	103	777	111	904	3.77	6.4

MJB VELOCITY 414E
PRK JACUZZI 971J
PRK GLASGOW 971G

KEYS RETRIBUTION 18B
MJB MARY 134C

MJB GLADIATOR 305B
PRK GLASGOW 671D
DJF WHISKEY RIVER 9006W
SRS RUSSETT 0305N
*MAC TORRINGTON 139T
PRK GINA 423P

Dam's Production
BW 10@85
WW 10@106
Udder 5-6

CED	BW	WW	YW	MWW	Milk	Marb	REA	Doc	Stay
+5.2	+2.6	+73	+108	+51	+15	+1	+8.4	+17	+16

Quad Polled

- A cow bull that is going to add lots of power and performance along with an attractive design and a little more frame.
- Dam is a very deep ribbed and long bodied female that has been producing good ones for many years.
- Jacuzzi was a bull we retained in 2021 that has been siring bigger, powerful, and correct offspring.
- Sons last year included a top seller to Jensen Brothers and one to Norman Lorang that we used in our AI program.



PRK Jacuzzi 971J • April 2022

P 13 PRK MOUNTAINTOP 911M \$4,500

Bull	Black	Polled	3/4 SA 1/4 AN	reg: P763254		
Born	BW	205 Wt	Index	11/6 Wt	WDA	Frame
3/28/2024	92	809	115	888	3.98	6.7

MJB VELOCITY 414E
PRK JACUZZI 971J
PRK GLASGOW 971G

KEYS RETRIBUTION 18B
MJB MARY 134C

MJB GLADIATOR 305B
PRK GLASGOW 671D
MAC CENTENNIAL 167C
MAC ZINNIA 207Z
SRS YUMA 072Y
PRK HEAVENLY 411P

Dam's Production
BW 4@86
WW 4@104
Udder 8-7

CED	BW	WW	YW	MWW	Milk	Marb	REA	Doc	Stay
+5.4	+1.8	+69	+101	+50	+16	+0	+8.3	+15	+16

Quad Polled

- If you like good ones with a little more frame and length then Mountaintop will fit the ticket.
- He has the highest WDA of the Salers bulls and has an attractive design and pattern that should make for an impressive bull as he matures.
- His mother is a long, balanced, and good milking purebred cow.

Return on Investment

We recognize that your purchase of breeding stock is a significant investment and feel that Parke genetics offer you a great value on that investment. We understand that you don't always know exactly what your bull needs will be for the next year at the time of our sale, but the benefit is that often there are savings compared to the Spring sales. In addition to the savings, there is no risk to you. We feed them free of charge and assume all responsibility for their health, and soundness, and guarantee them to pass a semen test and meet your satisfaction at delivery in April.

It is well deserved but still exciting to see the current market situation and most analysts are very optimistic about the coming years. We feel that the sale cattle all have tremendous value at their base price. Last year just over half of the sale lots sold at their base price and you can be confident that no cattle will be bid up unless it's by a contending customer. Big steer calves were bringing over \$1,900 when contracted in early summer and the salvage value on good big bulls has been around \$3,500 this year.

One other figure to keep in mind when evaluating your purchase is the return value. A simple calculation shows that a bull who sires calves weighing only 15 pounds more at weaning will conservatively produce an increased return of around \$2,500 over 3 years of use. This doesn't factor in the added value or increase if females are retained and incorporated into your breeding program. Just something to keep in mind when evaluating your next herd sire purchase.



P 14 PRK MEGABYTE 634M \$4,500

Bull	Black	Polled	3/4 SA 1/4 AN	reg: P763236					
<i>Born</i>	<i>BW</i>	<i>205 Wt</i>	<i>Index</i>	<i>11/6 Wt</i>	<i>WDA</i>	<i>Frame</i>			
2/20/2024	91	703	100	914	3.52	5.6			
*SRS OUTBACK 0809X			<div>TSB OUTBACK 132U SRS AURA 0809U MAC F1 SAMURAI 70S MAC UMATILLA 168U TOMBSTONE 050 SRS FOOTLOOSE 9927J DJF XCLUSIVE 498X PRK FLICKA 839U</div> <div>Dam's Production BW 7@84 WW 6@101 Udder 7-8</div>						
MAC HOMESTEAD 126H									
*MAC VERDA 171X									
SRS ARIAT 270A									
PRK FLICKA 634D									
PRK FLICKA 343A									
CED	BW	WW	YW	MWW	Milk	Marb	REA	Doc	Stay
+12.7	+0	+53	+73	+48	+22	+0	+63	+3	+16

Quad Polled

- Megabyte has good thickness down his top and into his rear quarter along with a stylish profile and great balance.
- His long bodied dam is a good milker with a very solid udder structure.



MAC Homestead 126H • March 2021

P 15 PRK MESQUITE 115M \$4,000

BULL INFORMATION									
Bull	Hom Black	Polled	3/4 SA 1/4 AN	reg: P763156					
Born	BW	205 Wt	Index	11/6 Wt	WDA	Frame			
3/5/2024	88	748	107	864	3.51	5.7			
CONNEALY COMRADE 138S			CONNEALY CONSENSUS 7229						
MAC F1 ENDURO 43E			HAPPY GEE OF CONANGA 919						
MAC CARINA 176C			*S NEBRASKA 330N						
			MAC WILLOW 134W						
MAC EARTHQUAKE 158E			MAC CENTENNIAL 167C						
PRK JUICE 115J			MAC ZINNIA 207Z						
PRK JUICE 825F			SRS DOMINO 155D						
			PRK JUICE 515C						
					Dam's Production				
					BW	2@89			
					WW	2@103			
					Udder	9-8			
CED	BW	WW	YW	MWW	Milk	Marb	REA	Doc	Stay
+10.2	+0.8	+67	+99	+57	+24	+2	+60	+8	+18

Quad Polled

- This 3/4 Salers has lots of rib depth, length, and is smooth sided.
- Dam is a very attractive young female with lots of volume and thickness.





P 16 PRK MARSHALL 0189M \$4,000

Bull	Black	Polled	1/2 SA	1/2 AN	reg: P763152	
Born	BW	205 Wt	Index	11/6 Wt	WDA	Frame
3/2/2024	89	706	101	818	3.29	5.2

CONNEALY COMRADE 1385
MAC F1 ENDURO 43E
MAC CARINA 176C

PRK FLINT 198F
PRK KIT 0189H
*PRK KIT 789E

CONNEALY CONSENSUS 7229
HAPPY GEE OF CONANGA 919
*S NEBRASKA 330N
MAC WILLOW 134W
SRS BULLSEYE 592B
*PRK VIRGINIA 198Y
PRK CAPTAIN 098C
*PRK KIT 499B

Dam's Production	
BW	3@83
WW	3@97
Udder	9-9

CED	BW	WW	YW	MWW	Milk	Marb	REA	Doc	Stay
+11.0	-0.8	+57	+88	+48	+20	+2	+2.1	+23	+17

Quad Polled

- This might be the most correct and stylish bull in the sale.
- He has good thickness and an easy going demeanor.
- His young moderate Flint dam has a great udder and disposition.
- Her first 2 calves are top end young females in our herd.

P 17 PRK MACHETE 834M \$3,500

Bull	Black	Polled	1/2 SA	1/2 AN	reg: P763158	
Born	BW	205 Wt	Index	11/6 Wt	WDA	Frame
3/9/2024	91	707	101	818	3.38	5.8

CONNEALY COMRADE 1385
MAC F1 ENDURO 43E
MAC CARINA 176C

SRS DUNDEE 270D
PRK CATHLEEN 834F
PRK CATHLEEN 543C

CONNEALY CONSENSUS 7229
HAPPY GEE OF CONANGA 919
*S NEBRASKA 330N
MAC WILLOW 134W
CONNEALY GREELEY
*SRS FINICKY 0838U
PRK ACE 081A
PRK CATHLEEN 843U

Dam's Production	
BW	5@88
WW	5@108
Udder	6-9

CED	BW	WW	YW	MWW	Milk	Marb	REA	Doc	Stay
+11.8	-0.5	+56	+84	+52	+24	+2	+4.4	+12	+18

Quad Polled

- A moderate bull with good shape and thickness.
- His dam is a top indexing female in the herd with lots of depth and milk.



P 18 PRK MULLAN 1810M \$4,500

Bull	Black	Polled	5/8 SA	3/8 AN	reg: P763145	
Born	BW	205 Wt	Index	11/6 Wt	WDA	Frame
3/4/2024	91	726	103	902	3.65	5.5

ECR ELECTRON 712E OF 48T
JSR CHEMISTRY 921
*JSR MS ROCKY 338A

SRS CATALYST 0435C
PRK ROSEBUD 1810F
PRK ROSEBUD 570C

TSB HUNTER 10C
*OPP BLACK LADY 48T
CCC/MARK UPWARD 0512
JSR MS JAMACA 762
SRS ZEUS 0509Z
SRS PATCHWORK 0435P
SRS ARIAT 270A
PRK ROSEBUD 070X

Dam's Production	
BW	5@93
WW	5@103
Udder	8-9

CED	BW	WW	YW	MWW	Milk	Marb	REA	Doc	Stay
+12.7	+0.8	+64	+97	+49	+17	+0	+5.8	+14	+16

Quad Polled

- Mullan has good performance in a moderate frame.
- He has been one we have appreciated all summer for his thickness, shape, and design.
- Dam is from the Rosebud cow family and is a heavy milking, moderate and deep female who has now put 3 calves into the bull sale.
- We have a very nice bred heifer in our replacements that is a full sister to Mullan.

Maternal Brother to Lot 18



PRK James Bond 1810J • March 2022

P 19 PRK MARVEL 0139M \$4,500

Bull	Hom Black	Polled	1/2 SA	1/2 AN	reg: P763169	
Born	BW	205 Wt	Index	11/6 Wt	WDA	Frame
3/3/2024	95	718	102	870	3.51	5.4

CONNEALY COMRADE 1385
MAC F1 FREEDOM 150F
*MAC AZURE 81A

PRK FULLBACK 280F
PRK PIGEON 0139H
PRK PIGEON 593C

HAPPY GEE OF CONANGA 919
MAC WYNDHAM 54W
MAC YAVANNAH 351Y
MJB ELWAY 322C
*PRK ROSEBUD 280Z
SRS SPARTACUS 0670Z
PRK PIGEON 393A

Dam's Production	
BW	3@90
WW	3@100
Udder	9-8

CED	BW	WW	YW	MWW	Milk	Marb	REA	Doc	Stay
+12.3	+0.6	+67	+102	+54	+21	+2	+6.3	+16	+17

Quad Polled

- Here is a bull with loads of shape over his top and into his quarter in a moderate and long package.
- This is the second bull this moderate young female has produced.
- She weaned Marvel at 60% of her body weight.

P20 PRK METRO 168M \$3,500

Bull	Hom Black	Polled	1/2 SA	1/2 AN	reg: P763167		
Born	BW	205 Wt	Index	11/6 Wt	WDA	Frame	
2/23/2024	100	714	102	882	3.43	6.0	

CONNEALY COMRADE 1385
MAC F1 FREEDOM 150F
*MAC AZURE 81A

MAC WYNDHAM 54W
MAC YAVANNAH 351Y
KEYS RETRIBUTION 18B
MJB MARY 134C
SRS DOMINO 155D
PRK PRIMROSE 588C

Dam's Production	
BW	2@91
WW	2@108
Udder	7-8

CED	BW	WW	YW	MWW	Milk	Marb	REA	Doc	Stay
+8.7	+0.8	+64	+101	+52	+20	+3	+55	+13	+18

Quad Polled

- This bull is very attractive and balanced in his design.
- His young dam is off to a good start with her first calf being one of our highest indexing heifers that sold to Camas Prairie Salers as one of our elite heifer calves in our 2023 sale.

Maternal Sister to Lot 20



PRK Primrose 3128L • September 2023



LOT 21

P21 PRK MAJOR 561M \$4,500

Bull	Hom Black	Scurred	5/8 SA	3/8 AN	reg: P763174		
Born	BW	205 Wt	Index	11/6 Wt	WDA	Frame	
3/9/2024	88	735	105	872	3.60	5.7	

CONNEALY COMRADE 1385
MAC F1 FREEDOM 150F
*MAC AZURE 81A

SRS AMERICAN 0472A
*PRK RHONDA 561C
*PRK RHONDA 541R

CONNEALY CONSENSUS 7229
HAPPY GEE OF CONANGA 919
MAC WYNDHAM 54W
MAC YAVANNAH 351Y
PRK YELLOWSTONE 966Y
SRS PONDERA 0472P
*SRS NOKIA 9722N
PRK NANCY 347N

Dam's Production	
BW	8@86
WW	8@106
Udder	6-8

CED	BW	WW	YW	MWW	Milk	Marb	REA	Doc	Stay
+14.2	-1.6	+56	+89	+55	+27	+1	+46	+13	+16

Quad Polled

- Major is a bull who we really appreciate for his length, depth of flank, and his powerful hip.
- He is a moderate birth weight & framed homozygous black bull with above average performance and super maternal.
- Rhonda is a gold dam who has lots of depth of body and milk.
- She has put 5 sons in our bull sales and 3 females back into the herd.



LOT 22

P22 PRK MAXIMUS 699M \$4,000

Bull	Black	Polled	1/2 SA	3/8 AN	1/8 AR	reg: P763168		
Born	BW	205 Wt	Index	11/6 Wt	WDA	Frame		
3/2/2024	90	684	97	842	3.38	5.0		

CONNEALY COMRADE 1385
MAC F1 FREEDOM 150F
*MAC AZURE 81A

*DJF BORDER LINE 815A
PRK KIT 699D
*PRK KIT 999W

CONNEALY CONSENSUS 7229
HAPPY GEE OF CONANGA 919
MAC WYNDHAM 54W
MAC YAVANNAH 351Y
C-BAR EVOLUTION 107Y
*STCY UNITY 815U
SRS MARKSMAN 0059M
PRK KIT 245M

Dam's Production	
BW	6@83
WW	6@96
Udder	8-8

CED	BW	WW	YW	MWW	Milk	Marb	REA	Doc	Stay
+13.5	-0.9	+60	+98	+51	+21	+1	+44	+22	+16

Quad Polled

- Maximus is a bull that has stood out since this spring with tremendous shape to his quarter and topline.
- His mother is a proven cow with lots of capacity of rib in a moderate frame.
- She has put some great females back in the herd and is the grand dam to Lot 29.

P23 PRK MARKSMAN 767M \$4,000

Bull	Hom Black	Polled	1/2 SA	1/2 AN	reg: P763175		
Born	BW	205 Wt	Index	11/6 Wt	WDA	Frame	
3/9/2024	98	764	109	894	3.69	6.3	

CONNEALY COMRADE 1385
MAC F1 FREEDOM 150F
*MAC AZURE 81A

PRK CAPTAIN 098C
PRK GLASGOW 767E
PRK GLASGOW 167Y

CONNEALY CONSENSUS 7229
HAPPY GEE OF CONANGA 919
MAC WYNDHAM 54W
MAC YAVANNAH 351Y
SRS ARIAT 270A
PRK VIRGINIA 098X
PRK TONKA 298T
PRK GLASGOW 547R

Dam's Production	
BW	6@88
WW	6@101
Udder	9-9

CED	BW	WW	YW	MWW	Milk	Marb	REA	Doc	Stay
+8.9	+0.9	+63	+95	+51	+20	+2	+36	+15	+16

Quad Polled

- Here is a bull that will add some pounds to your weaning weights.
- The dam is a powerful female with lots of length and depth and a really well designed udder.

Maternal Brother to Lot 21



PRK Jayhawk 561J • September 2021



P26 PRK MOOSE 627M \$4,000

Bull	Hom Black	Polled	5/8 SA 3/8 AN	reg: P763345		
Born	BW	205 Wt	Index	11/6 Wt	WDA	Frame
2/28/2024	95	735	105	930	3.69	6.1

MAC F1 FREEDOM 150F
MBJ PATRIOT 342H
 MJB DIAMOND 140F

CONNEALY COMRADE 1385
 *MAC AZURE 81A
 NJF BOULDER 46B
 MJB DAKOTA 152C

SRS BENCHMARK 8105B
 *PRK HICKORY 627D
 PRK HICKORY 418B

SRS ZEUS 0509Z
 *SRS SHANNON 8105U
 *OPP SABER 847U
 *PRK HICKORY 823U

Dam's Production		
BW	WW	Udder
7@91	7@108	6-6

CED	BW	WW	YW	MWW	Milk	Marb	REA	Doc	Stay
+10.2	+0.1	+71	+110	+57	+21	+3	+43	+10	+15

Quad polled

- If you want to add some size and performance through added length and depth without sacrificing solid maternal traits here is one to consider.
- The Hickory cow is an extremely deep and long female with gold dam status and high indexes.
- She has now put 5 bulls in our sales with some very top end bulls who have gained extremely well and is the grandmother to lot 62.

P24 PRK MAINSTREAM 868M \$3,500

Bull		Hom Black	Polled	5/8 SA 3/8 AN	reg: P763170	
Born	BW	205 Wt	Index	11/6 Wt	WDA	Frame
3/4/2024	85	701	100	828	3.35	5.8

CONNEALY COMRADE 1385
MAC F1 FREEDOM 150F
 *MAC AZURE 81A

CONNEALY CONSENSUS 7229
 HAPPY GEE OF CONANGA 919

MJB ELWAY 322C
PRK MELANIE 868F
 PRK MELANIE 368A

MAC WYNDHAM 54W
 MAC YAVANNAH 351Y
 MAC QUARTERBACK 58Y
 *MJB YELLOW ROSE 156Z
 PRK YELLOWSTONE 966Y
 PRK MELANIE 248M

Dam's Production		
BW	WW	Udder
5@84	5@95	8-8

CED	BW	WW	YW	MWW	Milk	Marb	REA	Doc	Stay
+12.5	-0.9	+65	+99	+50	+17	+2	+72	+17	+15

★ Potential Heifer Bull • Quad Polled

- A clean made bull that is very straight in his lines.
- The dam is a balanced and attractively designed female with an excellent disposition.

P25 PRK MOTTO 056M \$4,000

reg: P763348						
Bull	Red	Polled	5/8 SA 3/8 AN			
Born	BW	205 Wt	Index	11/6 Wt	WDA	Frame
3/2/2024	94	728	104	876	3.52	5.9

MAC F1 FREEDOM 150F
MBJ PATRIOT 342H
 MJB DIAMOND 140F

PRK FLINT 198F
PRK GINGER 056H
 PRK GINGER 553C

CONNEALY COMRADE 1385
 *MAC AZURE 81A
 NJF BOULDER 46B
 MJB DAKOTA 152C
 SRS BULLSEYE 592B
 *PRK VIRGINIA 198Y
 SRS ARIAT 270A
 PRK GINGER 333A

Dam's Production		
BW	WW	Udder
3@87	3@93	8-9

CED	BW	WW	YW	MWW	Milk	Marb	REA	Doc	Stay
+12.8	-0.5	+64	+99	+50	+18	+1	+35	+17	+16

Quad Polled

- Motto is a balanced bull with a good set of numbers behind him.
- His dam is typical of the Flint females with an attractive profile, moderate size, good udder, and gentle demeanor.

Maternal Brother to Lot 26



PRK Julius 627J • March 2022

Maternal Brother to Lot 26



PRK Highlight 627H • March 2021





P27 PRK MONARCH 776M \$4,500

Bull Hom Black Polled 5/8 SA 3/8 AN reg: UP763347						
Born	BW	205 Wt	Index	11/6 Wt	WDA	Frame
3/2/2024	85	709	101	890	3.57	5.5

MAC F1 FREEDOM 150F
MJB PATRIOT 342H
MJB DIAMOND 140F

CONNEALY COMRADE 1385
*MAC AZURE 81A
NJF BOULDER 46B
MJB DAKOTA 152C
SRS ARIAT 270A
SRS PONY TAIL 0778T
PRK ACE 081A
PRK GLASGOW 367A

Dam's Production	
BW	6@81
WW	6@99
Udder	8-9

CED	BW	WW	YW	MWW	Milk	Marb	REA	Doc	Stay
+13.8	-2.6	+61	+90	+50	+20	+3	+23	+11	+17

★★ Potential Heifer Bull • Quad Polled

- A smooth made, balanced bull with good shape.
- Dam is another high quality SRS Cinch female that has raised several replacement heifers and a high selling bull last year to Roy Lutts, PRK Lanslide 776L who we used AI in our program.

Maternal Brother to Lot 27



PRK Landslide 776L • March 2024

P29 PRK MAGA 879M \$4,000

Bull	Red	Polled	5/8 SA 3/8 AN	reg: P763349		
Born	BW	205 Wt	Index	11/6 Wt	WDA	Frame
3/5/2024	86	760	108	844	3.43	5.4

MAC F1 FREEDOM 150F
MJB PATRIOT 342H
MJB DIAMOND 140F

CONNEALY COMRADE 1385
*MAC AZURE 81A
NJF BOULDER 46B
MJB DAKOTA 152C
SRS ZEUS 0509Z
*SRS SHANNON 8105U
*DJF BORDER LINE 815A
*PRK KIT 999W

Dam's Production	
BW	5@84
WW	5@104
Udder	8-9

CED	BW	WW	YW	MWW	Milk	Marb	REA	Doc	Stay
+14.2	-2.2	+67	+103	+53	+20	+2	+20	+18	+17

★★ Potential Heifer Bull • Quad Polled

- Here is a very long bodied bull with good muscle shape throughout and super performance for a light birthweight bull.
- The Kit cow family has done great things for us and there are 3 gold dams in this pedigree.
- His dam has produced all keepers including 2 prior bulls with one being a full brother in last year's sale and is the grandmother to Lot 77 and a maternal sister to lot 22.

Maternal Brother to Lot 29



PRK Holland 879H • March 2021

P28 PRK MEDAL 790M \$3,500

Bull	Red	Polled	5/8 SA 3/8 AN	reg: P763350		
Born	BW	205 Wt	Index	11/6 Wt	WDA	Frame
3/9/2024	95	723	103	898	3.71	6.2

MAC F1 FREEDOM 150F
MJB PATRIOT 342H
MJB DIAMOND 140F

CONNEALY COMRADE 1385
*MAC AZURE 81A
NJF BOULDER 46B
MJB DAKOTA 152C
SRS ZEUS 0509Z
*PRK FLICKA 160Y
*SRS UNITED 0653U
PRK KIMBERLY 990W

Dam's Production	
BW	6@83
WW	6@101
Udder	8-7

CED	BW	WW	YW	MWW	Milk	Marb	REA	Doc	Stay
+13.7	-0.7	+65	+96	+54	+21	+2	+49	+11	+18

Quad Polled

- Medal is a long spined bull who is backed by good numbers and 3 gold dams in his pedigree.
- His length comes from his mother who has put 2 previous sons in the sale.





P 30 PRK MASTER 929M \$4,000

Bull	Hom Black	Polled	5/8 SA	3/8 AN	reg: P763346				
Born	BW	205 Wt	Index	11/6 Wt	WDA	Frame			
2/29/2024	81	698	99	894	3.56	5.7			
MAC F1 FREEDOM 150F			CONNEALY COMRADE 1385						
MJB PATRIOT 342H			*MAC AZURE 81A						
MJB DIAMOND 140F			NJF BOULDER 46B						
			MJB DAKOTA 152C						
MJB GLADIATOR 305B			SRS SPARTACUS 0670Z						
PRK BELLE 929G			*MJB BARBIE 126Z						
PRK BELLE 429B			*SRS UNITED 0653U						
			PRK YASMINE 129Y						
			Dam's Production						
			BW		4@80				
			WW		4@95				
			Udder		8-9				
CED	BW	WW	YW	MWW	Milk	Marb	REA	Doc	Stay
+13.6	-1.8	+61	+88	+48	+17	+1	+.41	+12	+17

★★★ Potential Heifer Bull • Quad Polled

- Nicely designed, smooth made calving ease bull.
- An attractive made female who milks well coupled with a nice udder who has produced 3 replacement females including a super full sister to this bull.

P 31 PRK MANCHESTER 169M \$4,000

Bull	Red	Polled	1/2 SA	1/2 AR	reg: P763276				
Born	BW	205 Wt	Index	11/6 Wt	WDA	Frame			
2/18/2024	72	690	98	860	3.28	5.3			
PIE CINCH 4126			LSF SAGA 1040Y				<div>Dam's Production</div> <div>BW2@76</div> <div>WW2@96</div> <div>Udder8-9</div>		
MAC F1 JUDSON 96J			TKP BONNE BEL 110						
MAC GEMMA 374G			MAC ATOMIC FORCE 36A						
			*MAC ZAILA 109Z						
PRK FENWAY 384F			*DJF BORDER LINE 815A						
PRK REBECCA 169J			*PRK LASS 384A						
PRK REBECCA 169Y			PRK TONKA 298T						
			PRK REBECCA 569R						
CED	BW	WW	YW	MWW	Milk	Marb	REA	Doc	Stay
+17.6	-3.9	+52	+70	+48	+22	+0	+27	+21	+20

★★★★ Potential Heifer Bull • Quad Polled

- This smaller framed heifer bull has great length and very good thickness.
- Typical of the Fenway females she is super long and very feminine and balanced in her phenotype.
- She weaned this bull at 60% of her body weight.



P 32 PRK MATER 179M \$4,500

Bull	Black	Polled	1/2 SA	3/8 AR	1/8 AN	reg: P763279			
Born	BW	205 Wt	Index	11/6 Wt	WDA	Frame			
2/26/2024	85	762	109	954	3.76	6.1			
PIE CINCH 4126			LSF SAGA 1040Y			<div>Dam's Production</div> <div>BW2@77</div> <div>WW2@106</div> <div>Udder9-7</div>			
MAC F1 JUDSON 96J			TKP BONNE BEL 110						
MAC GEMMA 374G			MAC ATOMIC FORCE 36A						
			*MAC ZAILA 109Z						
PRK GAMETIME 160G			SRS ENTITY 4108E						
PRK KIT 179J			*PRK FLICKA 160Y						
PRK KIT 779E			*DJF BORDER LINE 815A						
			PRK KIT 599C						
CED	BW	WW	YW	MWW	Milk	Marb	REA	Doc	Stay
+15.5	-2	+63	+87	+56	+25	+0	+4.8	+19	+18

★★ Potential Heifer Bull • Quad Polled

- You likely won't find a calving ease bull with this much performance without driving lots of miles.
- He has been dog gentle since birth and has tremendous length to go with great maternal figures.
- His young dam is an easy fleshing female who raised a terrific full sister on her first try and she is the maternal sister to the lot 33 bull.



P 33 PRK MCQUEEN 779M \$4,500

Bull	Red	Polled	1/2 SA	1/2 AR	reg: P763277				
Born	BW	205 Wt	Index	11/6 Wt	WDA	Frame			
2/25/2024	76	748	107	956	3.75	5.6			
PIE CINCH 4126			LSF SAGA 1040Y		<div>Dam's Production</div> <div>BW6@77</div> <div>WW6@105</div> <div>Udder7-7</div>				
MAC F1 JUDSON 96J			TKP BONNE BEL 110						
MAC GEMMA 374G			MAC ATOMIC FORCE 36A						
*DJF BORDER LINE 815A			*MAC ZAILA 109Z						
PRK KIT 779E			C-BAR EVOLUTION 107Y						
PRK KIT 599C			*STCY UNITY 815U						
			SRS ZEUS 0509Z						
			*PRK KIT 999W						
CED	BW	WW	YW	MWW	Milk	Marb	REA	Doc	Stay
+19.8	-4.2	+58	+84	+54	+25	+0	+3.4	+21	+17

★★★★ Potential Heifer Bull • Quad Polled

- McQueen is an amazing combination of calving ease and muscle shape over his top and into his quarter.
- He might need to travel with a wide load sign attached.
- We had a top end full brother in last year's sale who gained really well on feed.
- This cow has terrific depth, capacity and thickness along with an excellent disposition.
- The Kit cow family strikes again as she is the grandmother to lot 32 and closely related to the dam of lot 22.



P35 PRK MONTEREY 052M \$4,000

Bull	Red	Polled	5/8 SA	3/8 AN	reg: P763197	
Born	BW	205 Wt	Index	11/6 Wt	WDA	Frame
3/3/2024	83	724	103	870	3.51	5.6

*DJF BORDER LINE 815A

PRK FENWAY 384F

*PRK LASS 384A

SRS CINCH 0778C

PRK GINGER 052H

PRK GINGER 332A

C-BAR EVOLUTION 107Y

*STCY UNITY 815U

SRS WDA 270W

PRK LASS 184Y

SRS ARIAT 270A

SRS PONY TAIL 0778T

*SRS UNITED 0653U

PRK GINGER 032X

Dam's Production

BW 3@89

WW 3@102

Udder 9-9

CED	BW	WW	YW	MWW	Milk	Marb	REA	Doc	Stay
+16.2	-1.4	+59	+88	+47	+18	+0	+44	+22	+20

★★ Potential Heifer Bull • Quad Polled

- Here is a moderate framed, long spined bull with good performance for his calving ease.
- Not to sound like a broken record but this is another Cinch female that is very attractive, great uddered and excellent dispositioned.

P34 PRK MUSCLE MAN 888M \$4,500

Bull	Red/WF	Polled	5/8 SA	1/4 AR	1/8 AN	reg: P763278
Born	BW	205 Wt	Index	11/6 Wt	WDA	Frame
2/25/2024	82	747	106	990	3.88	5.8

PIE CINCH 4126
MAC F1 JUDSON 96J
MAC GEMMA 374G

SRS CINCH 0778C
PRK MOLLY 888F
PRK MOLLY 628D

LSF SAGA 1040Y
TKP BONNE BEL 110

MAC ATOMIC FORCE 36A

*MAC ZAILA 109Z

SRS ARIAT 270A

SRS PONY TAIL 0778T

*DJF BORDER LINE 815A

PRK MOLLY 828U

Dam's Production

BW 5@78

WW 4@102

Udder 8-8

CED	BW	WW	YW	MWW	Milk	Marb	REA	Doc	Stay
+18.8	-3.5	+61	+88	+52	+22	+1	+16	+19	+19

★★★ Potential Heifer Bull • Quad Polled

- This bull is named correctly and likely has the biggest spread from birth to current weight.
- He is the heaviest Optimizer bull in the sale and has stood out since birth because of his shape and chrome.
- His maternal brother is doing a good job for Morgan Batty in Utah.
- Dam is another Cinch female who possesses great capacity and thickness and descends from Melanie's old Champion show cow.

Grand Dam to Lots 35-37 & 83



PRK Lass 384A • September 2018

Sire & Grand Dam to Lots 35-37 & 83



PRK Fenway 384F • September 2018

Dam & Full Brother to Lot 33



PRK Lightning 779L • September 2023

Full Brother to Lot 33



PRK Lightning 779L • September 2023





P36 PRK MAVERICK 1454M \$4,500

Bull	Red	Polled	1/2 SA	3/8 AN	1/8 AR	reg: P763196		
Born	BW	205 Wt	Index	11/6 Wt	WDA	Frame		
2/25/2024	92	719	102	896	3.51	5.8		

*DJF BORDER LINE 815A
PRK FENWAY 384F
 *PRK LASS 384A

*SRS UNITED 0653U
PRK HOLLY 454B
 PRK HOLLY 264Z

C-BAR EVOLUTION 107Y
 *STCY UNITY 815U

SRS WDA 270W
 PRK LASS 184Y

SRS SAINT 0218S
 *SRS STARR 0653S
 SRS XTRA 0347X
 *PRK HOLLY 464P

Dam's Production		
BW	9@83	
WW	9@105	
Udder	6-6	

CED	BW	WW	YW	MWW	Milk	Marb	REA	Doc	Stay
+15.0	-0.8	+59	+85	+48	+19	+0	+4.6	+21	+22

Quad Polled

- Maverick will add an extra dose of style and phenotype to go along with good balance, thickness, and shape.
- He has been an eye catcher since birth and is backed by tremendous females including 4 gold dams.
- Proven dam has consistently raised some high quality offspring including 2 prior top bulls and 5 replacement females, including the dam of lot 52.
- She is Deana's 4-H cow and made 7 trips to the county fair bringing home lots of hardware over the years.

Dam & Full Sister to Lot 36



PRK Holly 454B & PRK Jewell 154J
 August 2021



Dam & Maternal Brother to Lot 36



PRK Holly 454B • August 2016

P37 PRK MANNING 987M \$3,500

Bull	Red	Polled	1/2 SA	3/8 AN	1/8 AR	reg: P763198		
Born	BW	205 Wt	Index	11/6 Wt	WDA	Frame		
3/10/2024	90	739	105	880	3.65	6.1		

*DJF BORDER LINE 815A
PRK FENWAY 384F
 *PRK LASS 384A

SRS CINCH 0778C
PRK SUSANNAH 987G
 PRK SUSANNAH 387A

C-BAR EVOLUTION 107Y
 *STCY UNITY 815U
 SRS WDA 270W
 PRK LASS 184Y
 SRS ARIAT 270A
 SRS PONY TAIL 0778T
 PRK YELLOWSTONE 966Y
 *PRK SUSANNAH 887U

Dam's Production		
BW	4@88	
WW	4@102	
Udder	7-8	

CED	BW	WW	YW	MWW	Milk	Marb	REA	Doc	Stay
+13.1	-0.7	+62	+92	+48	+17	+1	+4.3	+18	+20

Quad Polled

- A long sided bull with good WDA figures.
- Fenway sires cattle with super length of body along with good muscle shape down their top and into their quarter.
- Fenway's dam is a beautiful, moderate sized, easy fleshing female with a perfect udder still at 11 years of age.

P38 PRK MINUTEMAN 2144M \$4,000

Bull	Black	Polled	1/2 SA	3/8 AN	1/8 AR	reg: P763321		
Born	BW	205 Wt	Index	11/6 Wt	WDA	Frame		
3/8/2024	75	728	100	816	3.36	5.7		

PRK HERCULES 615H
PRK KEYSTONE 739K
 PRK WENDY 739E

SRS GUIDELINE 7126G
PRK SUSANNAH 2144J
 PRK SUSANNAH 944G

HOOK'S EAGLE 6E
 *PRK HIGHLIGHT 615D
 SRS BENCHMARK 8105B
 PRK WENDY 239Z
 SRS ELEMENT 4154E
 *SRS LACE 7126E
 PRK DIABLO 360D
 PRK SUSANNAH 344A

Dam's Production		
BW	3@70	
WW	2@104	
Udder	9-8	

CED	BW	WW	YW	MWW	Milk	Marb	REA	Doc	Stay
+16.1	-3.6	+64	+97	+51	+20	+2	+6.8	+15	+18

★★ Potential Heifer Bull • Quad Polled

- Twin
- This bull is a twin that was raised on his dam as a single calf.
- Good thickness and shape for a calving ease bull
- Young dam is a moderate sized cow who raised a good replacement heifer on her first try.

P39 PRK MIRACLE 2152M \$4,500

Bull	Hom Black	Polled	5/8 SA	3/8 AN	reg: P763326			
Born	BW	205 Wt	Index	11/6 Wt	WDA	Frame		
3/24/2024	92	791	113	830	3.66	5.8		

PRK HERCULES 615H
PRK KEYSTONE 739K
 PRK WENDY 739E

AVS MR DEEDS 719D
DLB BB MIDNIGHT 120J
 DLB GD MIDNIGHT 558C

HOOK'S EAGLE 6E
 *PRK HIGHLIGHT 615D
 SRS BENCHMARK 8105B
 PRK WENDY 239Z
 ECR BLACK BEAR 430B
 DHD MANDY 008X
 OPP 1002Y OF 50U
 DLB SNAP MIDNITE C100U

Dam's Production		
BW	2@86	
WW	2@107	
Udder	9-8	

CED	BW	WW	YW	MWW	Milk	Marb	REA	Doc	Stay
+13.8	-0.7	+70	+104	+54	+19	+1	+5.4	+13	+15

Quad Polled

- A younger calf with tremendous weaning index who has a very square top and powerful hip and quarter.
- Dam's first calf is a very nice bred heifer in our replacements.



P40 PRK MASTERCARD 693M \$4,500

Bull	Hom Black	Polled	1/2 SA	1/2 AN	reg: P763324		
Born	BW	205 Wt	Index	11/6 Wt	WDA	Frame	
3/21/2024	84	805	115	904	3.93	5.9	

PRK HERCULES 615H
PRK KEYSTONE 739K
PRK WENDY 739E

HOOK'S EAGLE 6E
*PRK HIGHLIGHT 615D
SRS BENCHMARK 8105B
PRK WENDY 239Z
SITZ UNCOMMON
*PRK MISS MONTANA 503R
SRS SEQUEL 0122S
PRK HONOR 345N

Dam's Production	
BW	7@88
WW	7@107
Udder	7-7

CED	BW	WW	YW	MWW	Milk	Marb	REA	Doc	Stay
+15.5	-2.4	+65	+93	+55	+22	+2	+5.4	+9	+18

★★ Potential Heifer Bull • Quad Polled

- This is the heaviest WDA Optimizer bull with tremendous spread from birth to weaning, which is typical of the first Keystone calves.
- Mastercard is very long sided with good depth.
- Heavy milking female who raised a closely related top bull in our sale last year selling to Brian McNaney.



P41 PRK MAUI 933M \$4,000

Bull	Hom Black	Polled	5/8 SA	3/8 AN	reg: P763325		
Born	BW	205 Wt	Index	11/6 Wt	WDA	Frame	
3/23/2024	83	694	99	786	3.45	6.0	

PRK HERCULES 615H
PRK KEYSTONE 739K
PRK WENDY 739E

HOOK'S EAGLE 6E
*PRK HIGHLIGHT 615D
SRS BENCHMARK 8105B
PRK WENDY 239Z
COLEMAN REGIS 904
*MAC ZARISSA 36Z
*SRS UNITED 0653U
DWB TOPAZ 3T

Dam's Production	
BW	4@76
WW	4@94
Udder	8-7

CED	BW	WW	YW	MWW	Milk	Marb	REA	Doc	Stay
+19.9	-3.1	+58	+80	+45	+16	+1	+5.8	+14	+19

★★★★ Potential Heifer Bull • Quad Polled

- This younger bull will do a great job on heifers while still siring calves with some thickness of top and muscle.
- Dam is an attractively made long bodied female with great feet.

P42 PRK METEORITE 161M \$4,000

Bull	Hom Black	Polled	1/2 SA	1/2 AN	reg: P763258		
Born	BW	205 Wt	Index	11/6 Wt	WDA	Frame	
3/8/2024	82	743	106	868	3.57	6.1	

SRS GOVERNOR 4111G
SRS JUDGE 7135J
*SRS AURA 7135E

SRS ENGAGE 4221E
SRS LACE 4111B
SRS BENCHMARK 8105B
SRS AURA 4152B
SRS DYNASTY 667D
SRS JULIET 4180B
SRS CINCH 0778C
PRK LADY 666D

Dam's Production	
BW	2@77
WW	2@107
Udder	8-9

CED	BW	WW	YW	MWW	Milk	Marb	REA	Doc	Stay
+12.7	-1	+74	+113	+58	+21	+3	+4.4	+1	+17

★ Potential Heifer Bull • Quad Polled

- A bull with lots of length and stretch that will add some performance to the calves of some bigger heifers.
- We kept a maternal brother last year (PRK Laser 161L) and used him very heavily both AI and natural as a calving ease sire.
- This young female is off to a great start and she is extremely long, moderate framed, and great uddered.



P43 PRK MEMPHIS 856M \$3,500

Bull	Hom Black	Scurred	1/2 SA	1/2 AN	reg: S763264		
Born	BW	205 Wt	Index	11/6 Wt	WDA	Frame	
3/16/2024	91	761	108	896	3.81	6.1	

SRS GOVERNOR 4111G
SRS JUDGE 7135J
*SRS AURA 7135E

SRS ENGAGE 4221E
SRS LACE 4111B
SRS BENCHMARK 8105B
SRS AURA 4152B
SRS ARIAT 270A
SRS PONY TAIL 0778T
MAC F1 HUMBOLDT 312Z
PRK 266Z

Dam's Production	
BW	5@88
WW	5@108
Udder	9-9

CED	BW	WW	YW	MWW	Milk	Marb	REA	Doc	Stay
+12.6	-0.3	+72	+112	+60	+24	+2	+6.5	+7	+19

Quad Polled

- Memphis will add lots of performance to his calves and is very long spined and deep ribbed which is typical of Judge offspring.
- His Cinch sired dam is a well designed long bodied female with a great udder.
- Her first calf was a bull we used as a natural service sire in our program.

Breed Explanations

Optimizer - Term used by the Salers Association to refer to cattle that are crossbred between registered Salers and Angus or Red Angus cattle.

Enhancer - Name we have given to our 3-way cross cattle which are made up of Salers, Simmental, and Angus or Red Angus. We have been using 1/2 to 3/4 Salers X Angus or Red Angus and breeding them to 1/2 to 3/4 Simmental X Angus or Red Angus. We are more concerned with the quality and type of cattle and their beneficial contributions to our program than specific percentages.

We have been breeding Salers cattle for over 25 years and prior to that were using Simmental in our commercial herd. We have decided to again incorporate some Simmental genetics into part of our cattle. We feel this can increase the level of hybrid vigor and genetic diversity available to our customers. Simmental can contribute performance, depth, thickness, and rib eye area to their offspring. Salers cattle add calving ease, calf vigor, dressing percentage, fertility, hardiness and a cleaner more eye appealing phenotype. All three of the breeds are very strong in maternal traits and that continues to be a big focus of our breeding program! We plan to continue to breed Salers cattle as well as Optimizers as we increase and develop our Enhancer program.

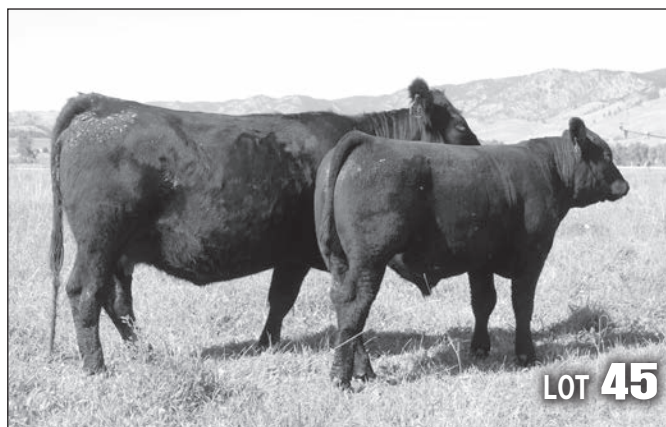


P44 PRK MERGER 976M \$4,500

Bull	Hom Black	Polled	1/2 SA	1/2 AN	reg: P763255		
Born	BW	205 Wt	Index	11/6 Wt	WDA	Frame	
3/2/2024	80	767	109	964	3.87	6.2	
SRS GOVERNOR 4111G SRS JUDGE 7135J *SRS AURA 7135E *SRS UNITED 0653U PRK LADY 976G PRK LADY 766E							
SRS ENGAGE 4221E SRS LACE 4111B SRS BENCHMARK 8105B SRS AURA 4152B SRS SAINT 0218S *SRS STARR 0653S MJB ELWAY 322C PRK LADY 466P							
Dam's Production BW 4@76 WW 4@104 Udder 7-8							
CED	BW	WW	YW	MWW	Milk	Marb	REA
+17.4	-2.6	+69	+102	+56	+22	+2	+71
							+5
							+18

★★ Potential Heifer Bull • Quad Polled

- Another big spread bull with a little more frame and lots of performance to go with an attractive phenotype.
- Dam is a maternal sister to lot 73 and raised our herdsire, PRK Jury, who we have been using with success on heifers for several years.



P45 PRK MAGNIFY 268M \$4,000

Bull	Black	Polled	1/2 SA	1/2 AN	reg: P763187		
Born	BW	205 Wt	Index	11/6 Wt	WDA	Frame	
2/8/2024	83	690	98	890	3.27	5.3	
SRS BULLSEYE 592B PRK FLINT 198F *PRK VIRGINIA 198Y DJF GARNER 816G PRK HOLLY 268K PRK HOLLY 964G							
SOO LINE MOTIVE 9016 SRS JULIET 0584R SRS WANTED 0218W PRK VIRGINIA 898U PVF INSIGHT 0129 *DJF URBANA 816U SRS DOMINO 155D PRK HOLLY 564C							
Dam's Production BW 1@83 WW 1@98 Udder 9-8							
CED	BW	WW	YW	MWW	Milk	Marb	REA
+13.1	-1.7	+56	+88	+46	+18	+0	+58
							+16
							+17

★ Potential Heifer Bull • Quad Polled

- A moderate framed lighter birthweight bull with very good thickness and shape through his hip and lower quarter.
- His mother is a very deep bodied, easy fleshing, and good milking 2 year old female.

P46 PRK MURDOCH 366M \$3,500

Bull	Hom Black	Polled	1/2 SA	1/2 AN	reg: P763190		
Born	BW	205 Wt	Index	11/6 Wt	WDA	Frame	
2/22/2024	99	713	102	906	3.51	6.1	
SRS BULLSEYE 592B PRK FLINT 198F *PRK VIRGINIA 198Y DJF XCLUSIVE 498X PRK LADY 366A PRK LADY 066X							
SOO LINE MOTIVE 9016 SRS JULIET 0584R SRS WANTED 0218W PRK VIRGINIA 898U B C EMBLAZON 854E 8023 DJF PAISLEY 498P *SRS UNITED 0653U PRK LADY 466P							
Dam's Production BW 10@97 WW 10@102 Udder 7-7							
CED	BW	WW	YW	MWW	Milk	Marb	REA
+12.5	-0.1	+52	+76	+43	+17	+0	+35
							+19
							+20

Quad Polled

- A very long spined bull who is easy to get along with.
- Proven dam is very deep ribbed and easy keeping.



P47 PRK MATCHBOX 732M \$3,500

Bull	Hom Black	Scurred	1/2 SA	1/2 AN	reg: S763192	
Born	BW	205 Wt	Index	11/6 Wt	WDA	Frame
2/28/2024	95	685	98	854	3.39	5.5

SRS BULLSEYE 592B
PRK FLINT 198F
*PRK VIRGINIA 198Y

SRS CINCH 0778C
PRK GINGER 732E
PRK GINGER 342A

SOO LINE MOTIVE 9016
SRS JULIET 0584R
SRS WANTED 0218W
PRK VIRGINIA 898U
SRS ARIAT 270A
SRS PONY TAIL 0778T
SRS WDA 270W
PRK GINGER 242M

Dam's Production	
BW	6@94
WW	6@103
Udder	8-9

CED	BW	WW	YW	MWW	Milk	Marb	REA	Doc	Stay
+16.7	-2.1	+49	+74	+42	+17	+2	+2.1	+18	+19

Quad Polled

- Matchbox is a very square made bull with good thickness. If you want a bull to fix udder structure in his daughters this one stacks 3 sires that have been as good as any we have ever used.
- A really moderate sized, nicely made, and deep bodied female.



P48 PRK MADDOX 265M \$4,000

Bull	Hom Black	Scurred	5/8 SA	3/8 AN	reg: P763311	
Born	BW	205 Wt	Index	11/6 Wt	WDA	Frame
2/8/2024	83	696	99	834	3.07	5.3

SRS GUIDELINE 7126G
PRK KLASSIC 095K
PRK GINA 095H

MJB VELOCITY 414E
PRK HONOR 265K
PRK HONOR 654D

SRS ELEMENT 4154E
*SRS LACE 7126E
*SRS UNITED 0653U
PRK GINA 895F
KEYS RETRIBUTION 18B
MJB MARY 134C
MAC F1 HUMBOLDT 312Z
PRK HONOR 460B

Dam's Production	
BW	1@83
WW	1@99
Udder	9-9

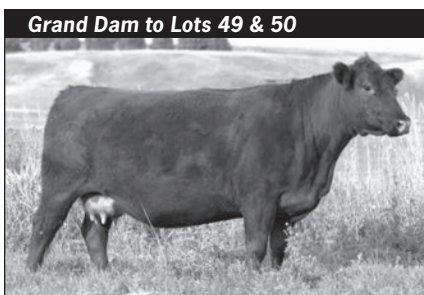
CED	BW	WW	YW	MWW	Milk	Marb	REA	Doc	Stay
+12.2	-1.4	+45	+66	+39	+16	+3	+3.6	+17	+19

★ Potential Heifer Bull • Quad Polled

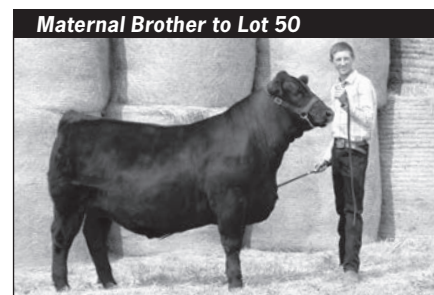
- A bull who you appreciate for his balanced and attractive make up with good shape.
- A very long bodied and feminine fronted 2 year old female is his mother.



PRK Klassic 095L • March 2023



PRK Holly 794E • October 2024



Scott with PRK Sundance 694H • August 2021

P49 PRK MONTGOMERY 185M \$3,500

Bull	Hom Black	Polled	1/2 SA	1/2 AN	reg: P763339	
Born	BW	205 Wt	Index	11/6 Wt	WDA	Frame
3/18/2024	81	717	102	796	3.42	5.4

MAC F1 ENDURO 43E
PRK KENWORTH 794K
PRK HOLLY 794E

SRS FORWARD 0984F
PRK PRIMROSE 185J
PRK PRIMROSE 685D

CONNELLY COMRADE 1385
MAC CARINA 176C
SRS CINCH 0778C
PRK HOLLY 494B
SRS DIALED IN 3160D
SRS SEIKO 0984W
PRK BONSAI 993B
PRK PRIMROSE 188Y

Dam's Production	
BW	2@79
WW	2@100
Udder	8-8

CED	BW	WW	YW	MWW	Milk	Marb	REA	Doc	Stay
+14.2	-1.4	+57	+84	+52	+23	+2	+4.6	+11	+18

★★ Potential Heifer Bull • Quad Polled

- A smaller framed bull that has a clean design and smooth shouldered.
- Dam had a light birth weight bull in our sale last year.



PRK Kenworth 794K • April 2024



P53 PRK MARIO 2205M \$4,000

Bull	Hom Black	Scurred	3/8 AN 3/8 SM 1/4 SA	reg: P763243		
Born	BW	205 Wt	Index	11/6 Wt	WDA	Frame
2/15/2024	71	685	98	860	3.25	5.1

GW SPARKY 369E
GW JAILBREAK 555J
GW MISS GPRD 038W

SRS FORWARD 0984F
PRK ROSEBUD 2205K
PRK ROSEBUD 0125H

GW MOVIN ON 183C
GW MISS CONQUEST 538C
GW PREDESTINED 701T
GW MISS LUCKY ONE 736R
SRS DIALED IN 3160D
SRS SEIKO 0984W
PRK FULLBACK 280F
PRK ROSEBUD 850F

Dam's Production		
BW	1@71	
WW	1@97	
Udder	7-8	

CED	BW	WW	YW	MWW	Milk	Marb	REA	Doc	Stay
+17.9	-3	+70	+110	+61	+26	+2	+70	+17	+18

★★★ Potential Heifer Bull • Quad Polled

- A smaller framed heifer bull with very good thickness of quarter and top.
- Dam is a long bodied 2 year old that is very balanced and feminine.



P51 PRK MAHOMES 0134M \$4,500

Bull		Hom Black	Polled	3/8 AN 3/8 SM 1/4 SA	reg: P763249	
Born	BW	205 Wt	Index	11/6 Wt	WDA	Frame
3/12/2024	87	750	107	910	3.81	5.9

GW SPARKY 369E
GW JAILBREAK 555J
GW MISS GPRD 038W

MAC F1 ENDURO 43E
PRK GINGER 0134H
*PRK GINGER 484B

GW MOVIN ON 183C
GW MISS CONQUEST 538C
GW PREDESTINED 701T
GW MISS LUCKY ONE 736R
CONNEALY COMRADE 1385
MAC CARINA 176C
SRS ZIP CODE 0174Z
PRK GINGER 242M

Dam's Production		
BW	3@80	
WW	3@103	
Udder	8-9	

CED	BW	WW	YW	MWW	Milk	Marb	REA	Doc	Stay
+15.7	-1.8	+73	+109	+63	+27	+4	+40	+18	+19

★ Potential Heifer Bull • Quad Polled

- Here is an extremely deep bodied, smoothly designed, calving ease bull with super WDA that weaned at 60% of dams weight.
- His dam is a moderate female with a great deal of eye appeal who raised another calving ease bull that sold in last year's sale.
- She is a maternal sister to the dam of lot 65.

P52 PRK MAGIC 154M \$4,500

Bull	Black	Polled	3/8 AN 3/8 SM 1/4 SA	reg: P763245		
Born	BW	205 Wt	Index	11/6 Wt	WDA	Frame
2/18/2024	87	795	113	1020	3.89	5.8

GW SPARKY 369E
GW JAILBREAK 555J
GW MISS GPRD 038W

PRK FENWAY 384F
PRK JEWEL 154J
PRK HOLLY 454B

GW MOVIN ON 183C
GW MISS CONQUEST 538C
GW PREDESTINED 701T
GW MISS LUCKY ONE 736R
*DJF BORDER LINE 815A
*PRK LASS 384A
*SRS UNITED 0653U
PRK HOLLY 264Z

Dam's Production		
BW	2@78	
WW	2@105	
Udder	9-9	

CED	BW	WW	YW	MWW	Milk	Marb	REA	Doc	Stay
+14.9	-0.7	+84	+127	+68	+26	+2	+59	+21	+21

Quad Polled

- You will have a hard time finding a bull with any better EPD and performance numbers than Magic.
- In addition to the numbers he is an attractively designed bull that is as long as a train.
- His young dam is an ideal female in our mind and is backing it up with her production.
- Her heifer bull was a top seller last year to Steven Schwend and she weaned this calf at 62% of her weight.
- Jewel is from a great cow family and is a full sister to the lot 36 bull.



Dam & Maternal Brother to Lot 52



PRK Jewell 154J • September 2023



P54 PRK MONTANA 280M \$4,500

Bull	Hom Black	Polled	3/8 AN	3/8 SM	1/4 SA	reg: P763244
Born	BW	205 Wt	Index	11/6 Wt	WDA	Frame
2/18/2024	99	775	110	972	3.71	6.0

GW SPARKY 369E
GW JAILBREAK 555J
GW MISS GPRD 038W

MAC F1 ENDURO 43E
PRK LADY 280K
PRK LADY 666D

GW MOVIN ON 183C
GW MISS CONQUEST 538C
GW PREDESTINED 701T
GW MISS LUCKY ONE 736R
CONNEALY COMRADE 1385
MAC CARINA 176C
SRS SPARTACUS 0670Z
PRK LADY 466B

Dam's Production
BW 1@99
WW 1@110
Udder 9-9

CED	BW	WW	YW	MWW	Milk	Marb	REA	Doc	Stay
+11.5	+0.2	+77	+117	+66	+28	+5	+53	+19	+19

Quad Polled

- Montana will catch the eye of cattlemen with his impressive design, balanced phenotype, friendly demeanor, power, and great performance.
- He possesses one of the best Marbling EPDs in the sale.
- His 2 year old dam is a moderate sized, very high quality and good milking female who weaned him at 75% of her body weight.

Maternal Brother to Lot 56



PRK Lexus 951L
September 2023

Dam & Maternal Brother to Lot 55



PRK Hickory 728E & PRK GPS 728G • September 2019



P55 PRK MEGAWATT 728M \$4,500

Bull	Hom Black	Polled	3/8 SA	3/8 AN	1/4 SM	reg: P763246
Born	BW	205 Wt	Index	11/6 Wt	WDA	Frame
2/24/2024	98	788	112	1065	4.16	6.2

GW SPARKY 369E
GW JAILBREAK 555J
GW MISS GPRD 038W

SRS BULLSEYE 592B
*PRK HICKORY 728E
PRK HICKORY 418B

GW MOVIN ON 183C
GW MISS CONQUEST 538C
GW PREDESTINED 701T
GW MISS LUCKY ONE 736R
SOO LINE MOTIVE 9016
SRS JULIET 0584R
*OPP SABER 847U
*PRK HICKORY 823U

Dam's Production
BW 6@93
WW 6@109
Udder 8-8

CED	BW	WW	YW	MWW	Milk	Marb	REA	Doc	Stay
+10.9	+0.9	+79	+120	+64	+25	+3	+74	+15	+20

Quad Polled

- This bull is flat out massive due to his length of body and tremendous capacity.
- He came off the cow at 948 lbs for a 70% weaning percentage and remember this was with no creep and he summered on dry range through July.
- He is currently at an amazing WDA of 4.16 lbs.
- We chose this cow as one of 5 in our first group of donors due to her consistent production, beautiful design, good udder, great milk and gold dam status.
- She raised our GPS herd sire on her first try, along with 2 other top bulls, and 2 great females with one being the dam to the lot 59 bull.

P56 PRK MASS 951M \$4,500

Bull	Black	Polled	3/8 AN	3/8 SM	1/4 SA	reg: 763250
Born	BW	205 Wt	Index	11/6 Wt	WDA	Frame
03/14/2024	99	837	119	984	4.15	6.3

GW SPARKY 369E
GW JAILBREAK 555J
GW MISS GPRD 038W

SRS SPARTACUS 0670Z
*PRK GINA 951G
PRK GINA 781E

GW MOVIN ON 183C
GW MISS CONQUEST 538C
GW PREDESTINED 701T
GW MISS LUCKY ONE 736R
SRS XTRA 0347X
SRS SEIKO 0670S
MJB ELWAY 322C
PRK GINA 081X

Dam's Production
BW 4@93
WW 4@109
Udder 9-9

CED	BW	WW	YW	MWW	Milk	Marb	REA	Doc	Stay
+12.9	+0.5	+83	+121	+68	+27	+2	+61	+17	+20

Quad Polled

- Here is the highest 205 day weight bull in the sale because of his super depth and volume along with great length.
- His gold dam mother is an ideal female in our opinion due to her impressive phenotype, great personality, and good performance.
- Her first calf, PRK Juneau, sold to Dan Undem and last years bull went to Ted & Julie Beck.

P57 PRK MAYOR 0195M \$3,500

Bull	Black	Polled	3/8 SA	3/8 AN	1/4 SM	reg: P763302	
Born	BW	205 Wt	Index	11/6 Wt	WDA	Frame	
3/4/2024	89	684	97	852	3.45	6.0	

TFS DUE NORTH 2659Z
PRK KLONDIKE 798K
 PRK RUTH 798E

HOOK'S EAGLE 6E
PRK JUICE 0195H
 PRK JUICE 125Y

HOOKS SHEAR FORCE 38K
 TFS 1/4 SM 3/4 AN 8419T
 SRS CINCH 0778C
 PRK RUTH 440B
 HOOK'S BLACK HAWK 50B
 HOOK'S CRYSTAL 1C
 SRS UMPIRE 0584U
 725T

Dam's Production	
BW	3@89
WW	3@100
Udder	8-8

CED	BW	WW	YW	MWW	Milk	Marb	REA	Doc	Stay
+14.2	-1.2	+58	+96	+48	+19	+2	+88	+23	+19

Quad Polled

- A clean made bull with good rib shape and depth.
- Dam is a really nicely made young cow with tremendous length coupled with good volume and lots of milk.
- Her first son sold well to Tracy Lake Land & Livestock in 2022.



P59 PRK MISSOURI 0198M \$4,500

Bull	Black	Polled	3/8 AN	3/8 SA	1/4 SM	reg: P763298	
Born	BW	205 Wt	Index	11/6 Wt	WDA	Frame	
3/1/2024	95	775	110	964	3.86	5.9	

TFS DUE NORTH 2659Z
PRK KLONDIKE 798K
 PRK RUTH 798E

S D S GRADUATE 006X
PRK HICKORY 0198H
 *PRK HICKORY 728E

HOOKS SHEAR FORCE 38K
 TFS 1/4 SM 3/4 AN 8419T
 SRS CINCH 0778C
 PRK RUTH 440B
 HOOKS SHEAR FORCE 38K
 S D S QUEEN 814U
 SRS BULLSEYE 592B
 PRK HICKORY 418B

Dam's Production	
BW	3@88
WW	3@106
Udder	7-6

CED	BW	WW	YW	MWW	Milk	Marb	REA	Doc	Stay
+13.3	+0.1	+66	+104	+55	+22	+2	+82	+17	+20

Quad Polled

- There is a lot of beef in this 2nd generation Enhancer high performing bull.
- He carries lots of thickness to go along with super rib shape and volume and is one we noticed at a very young age.
- Dam is a maternal sister to the Lot 55 bull and has terrific length and depth along with lots of milk.

P58 PRK MILESTONE 0196M \$4,500

Bull	Black	Polled	1/2 AN	1/4 SM	1/4 SA	reg: P763301	
Born	BW	205 Wt	Index	11/6 Wt	WDA	Frame	
3/3/2024	88	721	103	878	3.54	5.7	

TFS DUE NORTH 2659Z
PRK KLONDIKE 798K
 PRK RUTH 798E

HOOK'S EAGLE 6E
PRK LADY 0196H
 *PRK LADY 1516C

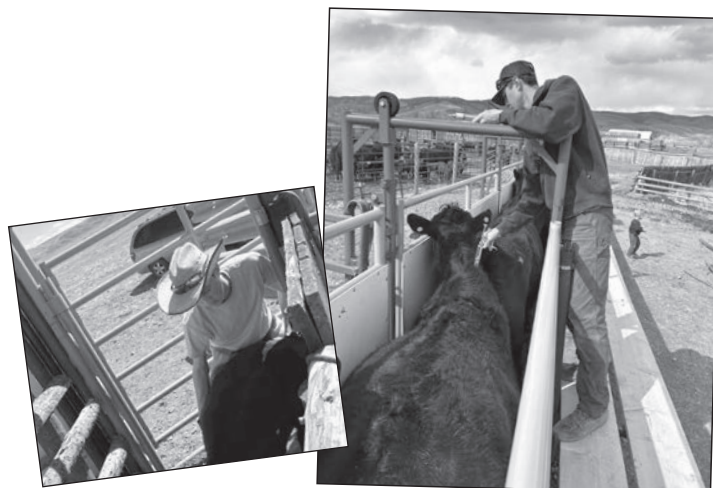
HOOKS SHEAR FORCE 38K
 TFS 1/4 SM 3/4 AN 8419T
 SRS CINCH 0778C
 PRK RUTH 440B
 HOOK'S BLACK HAWK 50B
 HOOK'S CRYSTAL 1C
 PRK ACE 081A
 PRK LADY 886U

Dam's Production	
BW	3@87
WW	3@102
Udder	8-9

CED	BW	WW	YW	MWW	Milk	Marb	REA	Doc	Stay
+14.0	-1	+61	+96	+53	+23	+3	+82	+21	+19

★ Potential Heifer Bull • Quad Polled

- We really like Milestone for his length, thickness and clean and attractive design.
- Great maternal heritage with a good milking dam and a gold dam for a grandmother.
- The Lady cow is very consistent, balanced and feminine and weaned this calf at 59%.





P60 PRK MAZARATTI 162M \$4,000

P763296						
Bull	Hom Black	Polled	1/2 AN 3/8 SA 1/8 SM	reg: P763296		
<i>Born</i>	<i>BW</i>	<i>205 Wt</i>	<i>Index</i>	<i>11/6 Wt</i>	<i>WDA</i>	<i>Frame</i>
2/24/2024	85	707	101	906	3.54	5.6

TFS DUE NORTH 2659Z
PRK KLONDIKE 798K
PRK RUTH 798E

HOOKS SHEAR FORCE 38K
TFS 1/4 SM 3/4 AN 8419T
SRS CINCH 0778C
PRK RUTH 440B

PRK FULLBACK 280F
PRK ROSEBUD 162J
PRK ROSEBUD 962G

MJB ELWAY 322C
*PRK ROSEBUD 280Z
PRK DURACELL 252D
PRK ROSEBUD 780E

Dam's Production	
BW	2@86
WW	2@101
Udder	8-8

CED	BW	WW	YW	MWW	Milk	Marb	REA	Doc	Stay
+15.2	-1.5	+57	+91	+49	+20	+1	+64	+19	+19

★★ Potential Heifer Bull • Quad Polled

- Mazaratti has a really nice pattern with lots of length, great top hip shape, thickness and depth.
- He weaned at 64% of his dams weight.
- Dam is extremely long spined and produced a top group bull last year with her first calf.



P61 PRK MACK 2267M \$4,000

P763292						
Bull	Red	Polled	1/2 AN 3/8 SA 1/8 SM	reg: P763292		
Born	BW	205 Wt	Index	11/6 Wt	WDA	Frame
2/9/2024	70	667	95	830	3.06	4.8

TFS DUE NORTH 2659Z
PRK KLONDIKE 798K
PRK RUTH 798E

HOOKS SHEAR FORCE 38K
TFS 1/4 SM 3/4 AN 8419T
SRS CINCH 0778C
PRK RUTH 440B

PRK HERCULES 615H
PRK TOPAZ 2267K
PRK TOPAZ 137Y

HOOK'S EAGLE 6E
*PRK HIGHLIGHT 615D
*SRS UNITED 0653U
DWB TOPAZ 3T

Dam's Production	
BW	1@70
WW	1@95
Udder	7-7

CED	BW	WW	YW	MWW	Milk	Marb	REA	Doc	Stay
+18.0	-3.5	+56	+86	+49	+21	+3	+71	+22	+19

★★★★ Potential Heifer Bull • Quad Polled

- This calving ease bull is smaller framed with lots of muscle and an extremely powerful hip and quarter.
- Young dam has great length and capacity and milks really well.

P62 PRK MEGATRON 227M \$4,500

Bull	Black	Polled	1/2 SA 3/8 AN 1/8 SM	reg: P763295		
Born	BW	205 Wt	Index	11/6 Wt	WDA	Frame
2/17/2024	83	832	100	990	3.76	6.0

TFS DUE NORTH 2659Z
PRK KLONDIKE 798K
PRK RUTH 798E

HOOKS SHEAR FORCE 38K
TFS 1/4 SM 3/4 AN 8419T
SRS CINCH 0778C
PRK RUTH 440B

PRK DURACELL 252D
PRK HICKORY 227K
*PRK HICKORY 627D

*DJF BORDER LINE 815A
PRK ROBBIE 252Z
SRS BENCHMARK 8105B
PRK HICKORY 418B

Dam's Production	
BW	1@83
WW	1@100
Udder	8-8

CED	BW	WW	YW	MWW	Milk	Marb	REA	Doc	Stay
+14.4	-0.9	+56	+94	+48	+19	+2	+70	+18	+18

Quad Polled

- A bull that is impressive and powerful from every angle and will sire some tremendous feeding cattle.
- We gave this bull a 100 weaning index because he ended up nursing on 2 first calf heifers.
- His dam carries a lot of depth and is a maternal sister to the lot 26 bull.



P63 PRK MESA 2299M \$4,500

Bull	Black	Polled	1/2 AN 1/4 SM 1/4 SA	reg: P763291		
Born	BW	205 Wt	Index	11/6 Wt	WDA	Frame
2/8/2024	86	716	102	898	3 30	5 5

TFS DUE NORTH 2659Z
PRK KLONDIKE 798K
PRK RUTH 798E

HOOKS SHEAR FORCE 38K
TFS 1/4 SM 3/4 AN 8419T
SRS CINCH 0778C
PRK RUTH 440B

HOOK'S FULL FIGURES 11F
PRK KIT 2299K
PRK KIT 599C

TJ DIPLOMAT 294D
HOOK'S DOCILA 23D
SRS ZEUS 0509Z
*PRK KIT 999W

Dam's Production	
BW	1@86
WW	1@102
Udder	8-9

CED	BW	WW	YW	MWW	Milk	Marb	REA	Doc	Stay
+16.5	-1.8	+57	+91	+56	+27	+3	+81	+23	+17

★ Potential Heifer Bull • Quad Polled

- This balanced bull is clean made and deep bodied.
- His 2 year old dam is a gentle, heavy milking, deep sided female from the Kit cow family and weaned him at 73%.



P 64 PRK MATADOR 1909M \$4,500

Bull	Black	Polled	3/8 SM	3/8 SA	1/4 AN	reg: P763184
Born	BW	205 Wt	Index	11/6 Wt	WDA	Frame
3/7/2024	90	744	106	908	3.72	5.8

TJ DIPLOMAT 294D
HOOK'S FULL FIGURES 11F
HOOK'S DOCILA 23D

MAR INNOVATION 251
TJ 33Y
HOOKS SHEAR FORCE 38K
HOOK'S YONKERS 21Y

SRS CINCH 0778C
PRK HANNAH 1909G
PRK HANNAH 729E

SRS ARIAT 270A
SRS PONY TAIL 0778T
*DJF BORDER LINE 815A
PRK HANNAH 419B

Dam's Production
BW 4@85
WW 4@101
Udder 8-9

CED	BW	WW	YW	MWW	Milk	Marb	REA	Doc	Stay
+15.6	-1.7	+72	+115	+60	+24	+4	+7.3	+19	+15

Quad Polled

- Matador has an impressive set of balanced EPDs to go along with a great phenotype.
- He has super length, with lots of volume and great thickness in an eye appealing package.
- Another beautiful Cinch daughter with a very good disposition who has produced 4 keepers with her 4 previous calves.



P 66 PRK MERLIN 833M \$4,000

Bull	Red	Polled	3/8 SM	3/8 AN	1/4 SA	reg: P763181
Born	BW	205 Wt	Index	11/6 Wt	WDA	Frame
3/3/2024	90	758	108	964	3.89	6.3

TJ DIPLOMAT 294D
HOOK'S FULL FIGURES 11F
HOOK'S DOCILA 23D

MAR INNOVATION 251
TJ 33Y
HOOKS SHEAR FORCE 38K
HOOK'S YONKERS 21Y

SRS DOMINO 155D
*PRK CATHEEN 833F
PRK CATHEEN 243Z

SRS BANNER 0749B
*SRS JULIET 0829U
SRS WDA 270W
PRK CATHEEN 843U

Dam's Production
BW 5@86
WW 5@106
Udder 7-6

CED	BW	WW	YW	MWW	Milk	Marb	REA	Doc	Stay
+15.3	-1.3	+71	+110	+64	+29	+4	+7.5	+8	+19

Quad Polled

- Merlin has very good performance figures due to his combination of length and volume.
- Cow is a gold dam who has as much length of body and extension as any female we have.
- She has produced 2 top females in the herd with her 2 year old being a full sister to this bull.

P 65 PRK MASCOTT 2284M \$3,500

Bull	Hom Black	Polled	1/2 SM	3/8 AN	1/8 SA	reg: P763177
Born	BW	205 Wt	Index	11/6 Wt	WDA	Frame
2/12/2024	67	663	94	850	3.17	4.6

TJ DIPLOMAT 294D
HOOK'S FULL FIGURES 11F
HOOK'S DOCILA 23D

MAR INNOVATION 251
TJ 33Y
HOOKS SHEAR FORCE 38K
HOOK'S YONKERS 21Y

TFS DUE NORTH 2659Z
PRK GINGER 2284K
*PRK GINGER 484B

HOOKS SHEAR FORCE 38K
TFS 1/4 SM 3/4 AN 8419T
SRS ZIP CODE 0174Z
PRK GINGER 242M

Dam's Production
BW 1@67
WW 1@94
Udder 8-9

CED	BW	WW	YW	MWW	Milk	Marb	REA	Doc	Stay
+19.9	-4.2	+61	+91	+58	+28	+5	+7.6	+15	+17

★★★★ Potential Heifer Bull • Quad Polled

- This heifer bull will moderate frame score while adding thickness and shape to his offspring and make high quality females.
- He will also contribute some good marbling to his calf crop.
- 2 year old dam is very moderate and deep with great balance and milk.
- She weaned this bull at 72% and is a maternal sister to the dam of lot 51.





P 67 PRK MENTOR 836M \$4,000

Bull	Hom Black	Scurred	3/8 AN 3/8 SM 1/4 SA	reg: S763179		
Born	BW	205 Wt	Index	11/6 Wt	WDA	Frame
2/28/2024	88	705	100	920	3.65	5.5

TJ DIPLOMAT 294D
HOOK'S FULL FIGURES 11F
HOOK'S DOCILA 23D

SRS BULLSEYE 592B
PRK GINGER 836F
PRK GINGER 141Y

MAR INNOVATION 251
TJ 33Y
HOOKS SHEAR FORCE 38K
HOOK'S YONKERS 21Y
SOO LINE MOTIVE 9016
SRS JULIET 0584R
*SRS UNITED 0653U
PRK GINGER 242M

Dam's Production	
BW	5@88
WW	5@97
Udder	8-8

CED	BW	WW	YW	MWW	Milk	Marb	REA	Doc	Stay
+14.3	-0.6	+70	+109	+56	+21	+3	+95	+18	+17

- A bull with worlds of capacity and depth along with good thickness backed up by his top rib eye area EPD.
- Dam is very long and balanced with great style.
- She has produced another top group bull and a heifer that Scott showed at the fair in 2022.

P 68 PRK MJ 899M \$4,500

P763182						
Bull	Black	Polled	3/8 SM 1/4 SA 1/4 AN 1/8 AR	reg: P763182		
Born	BW	205 Wt	Index	11/6 Wt	WDA	Frame
3/3/2024	71	729	104	898	3.62	5.1

TJ DIPLOMAT 294D
HOOK'S FULL FIGURES 11F
HOOK'S DOCILA 23D

*DJF BORDER LINE 815A
*PRK KIT 899F
PRK KIT 599C

MAR INNOVATION 251
TJ 33Y
HOOKS SHEAR FORCE 38K
HOOK'S YONKERS 21Y
C-BAR EVOLUTION 107Y
*STCY UNITY 815U
SRS ZEUS 0509Z
*PRK KIT 999W

Dam's Production	
BW	5@87
WW	5@109
Udder	7-7

CED	BW	WW	YW	MWW	Milk	Marb	REA	Doc	Stay
+18.8	-3.6	+64	+101	+62	+30	+4	+78	+19	+16

★★★★ Potential Heifer Bull • Quad Polled

- Moderate, wide, and thick would describe this bull.
- His full brother, PRK Jumbo, was the high selling bull in our 2021 sale to the Mentzer family.
- His gold dam mother has an additional 2 gold dams in her pedigree signaling the good milk and maternal in this bull.
- In addition to Jumbo she has produced a top selling bull in our 2020 sale to Roger Derks and an elite heifer calf in last year's sale to Rob Bodine.

Maternal Sister to Lot 68



PRK Kit 3149L • September 2023

Genomic Project Update

Last year we collected and submitted DNA tissue samples on over 425 of our females and our herd sires. We invested the time and finances into this effort in order to increase the accuracy of the data and information we are supplying to our customers. Participating in this genomic project not only verified the pedigrees of the animals in our herd but also increased the reliability (accuracy) of their EPDs. By doing this the EPDs of the animals in this year's sale offering have increased accuracy levels from what they would normally possess without having any offspring reported. This should improve the opportunity you have to make decisions and selections that will assist in moving your program in your desired direction.

By having genomic-enhanced EPDs it is equivalent to having the following number of offspring with actual performance data reported for each trait.

25+ offspring for Calving Ease Direct, Birth Weight, Weaning Weight, Yearling Weight, and Docility

19 offspring for Milk and 15 for Stayability

5-8 offspring for carcass EPDs

We see this as an additional tool to increase the value and usefulness of the data that goes into selection decisions. We continue to collect and submit actual data related to the various traits incorporated into EPD calculations. We believe in accurately collecting and honestly reporting birthweights, weaning weights, yearling weights, mature weights, calving ease scores, disposition scores, hip heights, disposal codes, and udders scores. Feel free to inquire about any questions you may have about Genomic enhanced EPDs or any individual measurements on any of the sale lots.

Dam & Full Brother to Lot 68



PRK Jumbo 899J • September 2021

Maternal Brother to Lot 68



PRK Hero 899H • April 2021



P 69 PRK MICHELIN 2184M \$4,500

Bull	Hom Black	Scurred	3/8 SA 3/8 AN 1/4 SM	reg: P763208		
Born	BW	205 Wt	Index	11/6 Wt	WDA	Frame
3/9/2024	88	789	112	936	3.87	5.8

MSR TENACITY 3733A PRK GPS 728G *PRK HICKORY 728E	CONNEALY CONFIDENCE 0100 MSR 1206Y OF 9325W SBET SRS BULLSEYE 592B PRK HICKORY 418B	Dam's Production
HOOK'S EAGLE 6E PRK MONTANA 2184J PRK MONANA 424B	HOOK'S BLACK HAWK 50B HOOK'S CRYSTAL 1C *SRS UNITED 0653U PRK MONTANA 807U	BW 2@79 WW 2@103 Udder 7-8

CED	BW	WW	YW	MWW	Milk	Marb	REA	Doc	Stay
+15.6	-1.3	+66	+96	+54	+22	+1	+77	+18	+17

★ Potential Heifer Bull • Quad Polled

- Michelin may be as long bodied as any bull in the offering and he has a powerful hip and top butt along with great performance.
- His length comes from both sides of his pedigree and his dam adds good depth and a clean profile along with super milk.



P 70 PRK MCGYVER 556M \$4,000

Bull	Black	Polled	1/2 SA 1/2 AN	reg: P763214		
Born	BW	205 Wt	Index	11/6 Wt	WDA	Frame
3/18/2024	85	715	102	840	3.61	5.8

MSR TENACITY 3733A PRK GPS 728G *PRK HICKORY 728E	CONNEALY CONFIDENCE 0100 MSR 1206Y OF 9325W SBET SRS BULLSEYE 592B PRK HICKORY 418B	Dam's Production
PRK ACE 081A PRK TOPAZ 556C PRK TOPAZ 336A	PRK YELLOWSTONE 966Y PRK GINA 081X *SRS UNITED 0653U DWB TOPAZ 3T	BW 8@91 WW 7@100 Udder 6-7

CED	BW	WW	YW	MWW	Milk	Marb	REA	Doc	Stay
+15.5	-1.9	+52	+73	+45	+19	+1	+54	+14	+19

Quad Polled

- A typical GPS son with lots of width across his top and into his rear quarter.
- Dam has tons of volume and middle with very good milk and a good personality.

P 71 PRK MOSES 615M \$4,000

Bull	Hom Black	Scurred	5/8 SA 3/8 AN	reg: S763213		
Born	BW	205 Wt	Index	11/6 Wt	WDA	Frame
3/17/2024	84	733	104	860	3.68	5.6

MSR TENACITY 3733A PRK GPS 728G *PRK HICKORY 728E	CONNEALY CONFIDENCE 0100 MSR 1206Y OF 9325W SBET SRS BULLSEYE 592B PRK HICKORY 418B	Dam's Production
MAC F1 HUMBOLDT 312Z *PRK HIGHLIGHT 615D PRK HIGHLIGHT 409B	WERNER WAR PARTY 2417 MAC BLK MELODY 243M KEYS ZODIAC 20Z PRK HIGHLIGHT 109Y	BW 7@80 WW 7@107 Udder 5-7

CED	BW	WW	YW	MWW	Milk	Marb	REA	Doc	Stay
+15.9	-2.4	+53	+77	+52	+26	+2	+45	+15	+16

★★ Potential Heifer Bull •

- A calving ease bull with very good thickness throughout.
- His mother is a gold dam with lots of depth, length, and milk along with an excellent disposition who consistently raises good calves.
- She raised the herdsire, PRK Hercules selling to Bruce Thurgood, who we continue to use in our AI program as well as a very good 2 year old female who is a full sister to Moses.



PRK Ruth 798E • October 2024



P 72 PRK MILLENNIUM 798M \$4,500

Bull	Hom Black	Polled	1/2 AN 1/2 SA	reg: P763210		
Born	BW	205 Wt	Index	11/6 Wt	WDA	Frame
3/10/2024	95	726	103	880	3.65	5.8

MSR TENACITY 3733A PRK GPS 728G *PRK HICKORY 728E	CONNEALY CONFIDENCE 0100 MSR 1206Y OF 9325W SBET SRS BULLSEYE 592B PRK HICKORY 418B	Dam's Production
SRS CINCH 0778C PRK RUTH 798E PRK RUTH 440B	SRS ARIAT 270A SRS PONY TAIL 0778T *SRS UNITED 0653U PRK RUTH 250Z	BW 6@90 WW 6@100 Udder 9-9

CED	BW	WW	YW	MWW	Milk	Marb	REA	Doc	Stay
+14.8	-0.7	+55	+84	+49	+21	+1	+41	+18	+19

Quad Polled

- He has the GPS thickness and power with a little more style and smoothness.
- His dam has great length along with a beautiful and powerful phenotype.
- We flushed this cow in the Spring as well as her mother back to Cinch in an attempt to multiply this females influence in our program.
- This is her third bull with one being our Enhancer herd sire, PRK Klondike 798K the sire to lots 57 - 63.

P73 PRK MELBOURNE 766M \$4,000

Bull	Hom Black	Polled	3/8 AN	3/8 SA	1/4 SM	reg: P763218	
Born	BW	205 Wt	Index	11/6 Wt	WDA	Frame	
2/27/2024	86	691	98	890	3.52	5.5	

GW TRIPLE CROWN 018C
CLRS HERDBOOK 316H
CLRS ALL XCELLENCE 316 A

MJB ELWAY 322C
PRK LADY 766E
PRK LADY 466P

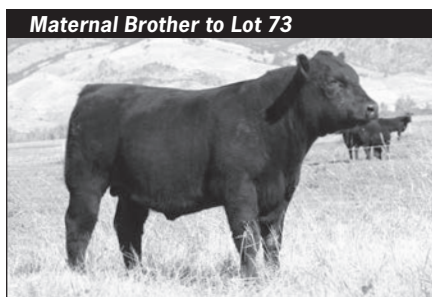
J BAR J NIGHTRIDE 25Z
GW MISS GPRD 359A
MCM TOP GRADE 018X
HOOK'S XCELLENCE 87X
MAC QUARTERBACK 58Y
*MJB YELLOW ROSE 156Z
SRS MARKSMAN 0059M
PRK LADY 146L

Dam's Production	
BW	6@85
WW	6@99
Udder	8-8

CED	BW	WW	YW	MWW	Milk	Marb	REA	Doc	Stay
+14.9	-2.1	+64	+87	+53	+21	+2	+92	+13	+15

★ Potential Heifer Bull • Quad Polled

- Here is a moderate framed bull with lots of width of top and a great rib eye area EPD.
- Dam comes from the Lady cow family and is deep and moderate sized, weaning this bull at 58%.
- She is the grand dam of lot 44 as well as our herdsire, PRK Jury 976J.



PRK Hefty 766H • September 2020

P75 PRK MARINE 743M \$4,000

Bull	Black	Polled	1/2 SA	3/8 AN	1/8 SM	reg: P763318	
Born	BW	205 Wt	Index	11/6 Wt	WDA	Frame	
3/19/2024	86	728	104	854	3.68	5.4	

HOOK'S EAGLE 6E
PRK KNIGHT 727K
PRK GINA 727E

PRK CASH 160C
PRK CATHLEEN 743E
PRK CATHLEEN 243Z

HOOK'S BLACK HAWK 50B
HOOK'S CRYSTAL 1C
SRS BULLSEYE 592B
PRK GINA 943W
SRS ZEUS 0509Z
*PRK FLICKA 160Y
SRS WDA 270W
PRK CATHLEEN 843U

Dam's Production	
BW	6@80
WW	6@95
Udder	8-7

CED	BW	WW	YW	MWW	Milk	Marb	REA	Doc	Stay
+16.3	-3	+56	+82	+46	+18	+2	+68	+12	+19

★ ★ Potential Heifer Bull • Quad Polled

- This is a thick, square made and moderate bull.
- His sire, PRK Knight 727K, is an Enhancer bull we retained and his first calves are moderate at birth with lots of thickness and weaned with an average 103 index.



PRK Knight 727K • September 2024

P74 PRK MCGUIRE 998M \$4,000

Bull	Black	Polled	3/8 AN	3/8 SM	1/4 SA	reg: P763221	
Born	BW	205 Wt	Index	11/6 Wt	WDA	Frame	
3/2/2024	81	720	103	880	3.53	5.9	

GW TRIPLE CROWN 018C
CLRS HERDBOOK 316H
CLRS ALL XCELLENCE 316 A

MJB GLADIATOR 305B
PRK VIRGINIA 998G
*PRK VIRGINIA 198Y

J BAR J NIGHTRIDE 25Z
GW MISS GPRD 359A
MCM TOP GRADE 018X
HOOK'S XCELLENCE 87X
SRS SPARTACUS 0670Z
*MJB BARBIE 126Z
SRS WANTED 0218W
PRK VIRGINIA 898U

Dam's Production	
BW	4@79
WW	4@98
Udder	9-9

CED	BW	WW	YW	MWW	Milk	Marb	REA	Doc	Stay
+15.3	-2.3	+72	+104	+55	+19	+2	+86	+21	+21

★★★ Potential Heifer Bull • Quad Polled

- A calving ease bull with good length of body and depth of rib.
- The Virginia female is very attractive in her design and body type with good depth and balance.
- She comes from a gold dam and is a maternal sister to our herdsire, PRK Flint, who excels at calving ease and terrific females.



P76 PRK MAGMA 910M \$4,000

Bull	Red	Polled	5/8 SA	1/4 SM	1/8 AN	reg: P763319	
Born	BW	205 Wt	Index	11/6 Wt	WDA	Frame	
3/19/2024	87	759	108	886	3.82	6.2	

HOOK'S EAGLE 6E
PRK KNIGHT 727K
PRK GINA 727E

MAC EARTHQUAKE 158E
*PRK HEAVENLY 910G
PRK HEAVENLY 121Y

HOOK'S BLACK HAWK 50B
HOOK'S CRYSTAL 1C
SRS BULLSEYE 592B
PRK GINA 943W
MAC CENTENNIAL 167C
MAC ZINNIA 207Z
SRS WYATT EARP 965W
PRK HEAVENLY 631S

Dam's Production	
BW	4@95
WW	4@108
Udder	9-9

CED	BW	WW	YW	MWW	Milk	Marb	REA	Doc	Stay
+10.6	-0.1	+63	+92	+53	+22	+1	+92	+7	+17

Quad Polled

- This bull is long sided with a very clean and correct phenotype in addition to lots of rib eye and performance.
- His dam has achieved gold dam status and is very good uddered and has extra stretch and size.



ENHANCER BULLS



P 77 PRK MUSTANG 189M \$4,500

Bull	Red	Scurred	1/2 SA 3/8 AN 1/8 SM	reg: P763224		
Born	BW	205 Wt	Index	11/6 Wt	WDA	Frame
2/20/2024	80	695	99	882	3.39	5.2

HOOK'S EAGLE 6E
PRK HERCULES 615H
*PRK HIGHLIGHT 615D

SRS GENERAL 4180G
PRK KIT 189J
PRK KIT 879F

HOOK'S BLACK HAWK 50B
HOOK'S CRYSTAL 1C
MAC F1 HUMBOLDT 312Z
PRK HIGHLIGHT 409B

SRS DYNASTY 667D
SRS JULIET 4180B
SRS BENCHMARK 8105B
PRK KIT 699D

Dam's Production	
BW	2@81
WW	2@101
Udder	9-9

CED	BW	WW	YW	MWW	Milk	Marb	REA	Doc	Stay
+16.4	-3	+65	+95	+53	+20	+.3	+.69	+17	+20

★★★ Potential Heifer Bull • Quad Polled

- Mustang brings calving ease without giving up depth, thickness or shape.
- His young dam had a top selling calving ease bull in last year's sale to Rusty Cornwall and is a maternal sister to lot 29.
- PRK Hercules is siring calves with calving ease and lots of depth.
- He has amazing EPDs and we love his heifer calves.

P 78 PRK MOUNTAIN 2198M \$4,500

Bull		Hom Black	Polled	3/8 AN 3/8 SA 1/4 SM	reg: P763322	
Born	BW	205 Wt	Index	11/6 Wt	WDA	Frame
3/14/2024	83	762	109	860	3.63	5.4

PRK HERCULES 615H
PRK KEYSTONE 739K
PRK WENDY 739E

TFS DUE NORTH 2659Z
PRK CRIMSON 2198J
PRK CRIMSON 9106G

HOOK'S EAGLE 6E
*PRK HIGHLIGHT 615D
SRS BENCHMARK 8105B
PRK WENDY 239Z

HOOKS SHEAR FORCE 38K
TFS 1/4 SM 3/4 AN 8419T
MSR TENACITY 3733A
PRK CRIMSON 616D

Dam's Production	
BW	2@81
WW	2@106
Udder	9-8

CED	BW	WW	YW	MWW	Milk	Marb	REA	Doc	Stay
+18.4	-3.8	+65	+95	+54	+21	+.3	+.69	+16	+16

★★★★ Potential Heifer Bull • Quad Polled

- A second generation Enhancer with as much calving ease and performance combination as any bull in the sale.
- He is extremely deep ribbed and weaned at 66% of his dam's weight.
- His small framed dam has lots of thickness and a quality udder.
- Her first calf, PRK Lookout, was a top bull in last year's sale who we used in our AI program as a calving ease sire.



PRK Lookout 2198L • March 2024



PRK Justice 950J • September 2021

Parke Ranch Elite Heifer Calves

We are again offering some of our very top-end registered heifer calves in this year's sale. We are confident that these heifers have tremendous potential to make great producing females as well as the promise to do well in the show ring for a young person. We want to encourage and give young people an opportunity to infuse quality genetics into their future herd at an affordable price. We will give a 12.5% rebate on the purchase price of any heifer calf in this year's sale to any buyers under 20 years of age. These heifers were selected to give a cross-section of our breeding program and breeds. They are from different sires we are using with confidence in our program and from some of our proven cow families. They were weaned on September 26th and we started feeding them a few pounds of pellets on Oct. 8th.



P80 PRK TREASURE 414M \$3,000

Heifer	Hom Black	Quad Polled	3/4 SA 1/4 AN	reg: P763666
Born	BW	205 Wt	Index	11/6 Wt
2/29/2024	93	676	105	764

*SRS OUTBACK 0809X
MAC HOMESTEAD 126H
*MAC VERDA 171X

MJB ELWAY 322C
PRK TREASURE 844F
*PRK TREASURE 334A

TSB OUTBACK 132U
SRS AURA 0809U
MAC F1 SAMURAI 70S
MAC UMATILLA 168U
MAC QUARTERBACK 58Y
*MJB YELLOW ROSE 156Z
*SRS UNITED 0653U
PRK TREASURE 741T

Dam's Production
BW 5@85
WW 5@98
Udder 7-7

CED	BW	WW	YW	MWW	Milk	Marb	REA	Doc	Stay
+13.4	+1.3	+62	+85	+49	+19	+1	+86	+10	+19

- Treasure is a a powerful 3/4 Salers female with a great deal of volume and thickness.
- She carries lots of thickness of top back into an expressive hip and quarter.
- Her dam is a very good milking female with tremendous capacity and a great personality.
- The maternal grand dam is a gold dam.
- Treasure's sire, MAC Homestead, also has a gold dam as his mother and sires cattle with a lot of balance and attractiveness.



P81 PRK SUZANNE 422M \$3,000

Heifer	Black	Quad Polled	5/8 SA 3/8 AN	reg: P763725
Born	BW	205 Wt	Index	11/6 Wt
3/2/2024	85	670	104	770

SRS GUIDELINE 7126G
PRK KLASSIC 095K
PRK GINA 095H

SRS DUNDEE 270D
PRK SUZANNE 0112H
PRK SUZANNE 1712E

SRS ELEMENT 4154E
*SRS LACE 7126E
*SRS UNITED 0653U
PRK GINA 895F
CONNEALY GREELEY
*SRS FINICKY 0838U
SRS BENCHMARK 8105B
PRK SUZANNE 572C

Dam's Production
BW 3@85
WW 3@102
Udder 8-8

CED	BW	WW	YW	MWW	Milk	Marb	REA	Doc	Stay
+10.7	-0.2	+59	+90	+48	+18	+1	+40	+16	+17

- This 5/8 Salers female has a bright future.
- Suzanne is a very eye appealing heifer who is clean fronted while still carrying lots of depth through her rib and into her flank.
- She blends thickness and femininity in a very uniform package making for a great show prospect.
- Her young, SRS Dundee sired, dam is long bodied and stylish whose first two calves both sold as bulls in our past production sales.
- Suzanne's sire, PRK Klassic, was a high selling bull in our 2022 sale to Silver Spur Salers in Missouri.
- We have used Klassic with great success as a calving ease sire.

P82 PRK ROSEBUD 450M \$3,000

Heifer	Black	Quad Polled	5/8 SA 3/8 AN	reg: P763648
Born	BW	205 Wt	Index	11/6 Wt
3/6/2024	87	662	103	756

MAC F1 FREEDOM 150F
MJB PATRIOT 342H
MJB DIAMOND 140F

MJB GLADIATOR 305B
PRK ROSEBUD 950G
PRK ROSEBUD 650D

CONNEALY COMRADE 138S
*MAC AZURE 81A
NJF BOULDER 46B
MJB DAKOTA 152C
SRS SPARTACUS 0670Z
*MJB BARBIE 126Z
*SRS UNITED 0653U
PRK ROSEBUD 480B

Dam's Production
BW 4@89
WW 4@102
Udder 8-9

CED	BW	WW	YW	MWW	Milk	Marb	REA	Doc	Stay
+11.5	+0.2	+67	+100	+53	+19	+1	+43	+11	+18

- Rosebud is another 5/8 Optimizer heifer who has a lot going for her starting by the backing of one of our top cow families.
- Her maternal great grandmother is the dam of the heifer selling as lot #85.
- This heifer is very long spined, clean fronted, and straight in her lines while still having adequate volume to do well in the show ring or the pasture for years to come.
- Rosebud's dam is a feminine female with great length and good milk and udder structure.
- Her first calf was one of our favorite bulls in the 2021 sale, and her next 2 are great young cows in our herd.
- This heifers full sister from last year is one of our top looking bred heifers.
- We really like our Patriot females and are excited to calve the first ones this coming season.
- After using MJB Patriot in our AI program for a couple of years we purchased him from Deichman Cattle Co. and are using him in our pastures now.



P 83 PRK JASMINE 474M \$3,000

Heifer	Red	Quad Polled	1/2 SA 3/8 AN 1/8 AR	reg: P763583
Born	BW	205 Wt	Index	11/6 Wt
2/24/2024	86	663	103	786
	WDA	Frame		
	3.07	5.3		

*DJF BORDER LINE 815A
PRK FENWAY 384F
*PRK LASS 384A

SRS YAKIMA 9118YY
PRK JASMINE 574C
PRK JASMINE 194Y

C-BAR EVOLUTION 107Y
*STCY UNITY 815U

SRS WDA 270W
PRK LASS 184Y
SRS UNREAL 0151U
*SRS LACE 9118W
*SRS UNITED 0653U
PRK JASMINE 894U

Dam's Production	
BW	8@87
WW	8@103
Udder	7-7

CED	BW	WW	YW	MWW	Milk	Marb	REA	Doc	Stay
+14.4	-1	+58	+83	+46	+17	+1	+40	+17	+20

- This red Optimizer heifer has been one that stood out all summer.
- Jasmine is a long sided female with very good thickness and an easy going personality.
- Her dam is an attractive cow with lots of volume and thickness.
- She made a few trips to our county fair over the years bringing home banners on multiple occasions.
- Jasmine's sire, PRK Fenway, was a high seller in our 2018 sale who we have used AI for several years because of his length and correctness.
- Fenway's gold dam is still producing in our herd at 12 years of age and is a model female for body type and udder structure.
- A full brother to this heifer was the high selling red bull in our 2020 Production Sale.

P 84 PRK WENDY 4195M \$3,000

Heifer	Hom Black	Quad Polled	3/8 AN 3/8 SA 1/4 SM	reg: P763628
Born	BW	205 Wt	Index	11/6 Wt
2/27/2024	85	698	108	780
	WDA	Frame		
	3.08	5		

MSR TENACITY 3733A
PRK GPS 728G
*PRK HICKORY 728E

HOOK'S FULL FIGURES 11F
PRK WENDY 2195J
PRK WENDY 239Z

CONNEALY CONFIDENCE 0100
MSR 1206Y OF 9325W SBET

SRS BULLSEYE 592B
PRK HICKORY 418B
TJ DIPLOMAT 294D
HOOK'S DOCILA 23D
SRS UMPIRE 0584U
LBR DAYTONAS FOCUS S609

Dam's Production	
BW	2@86
WW	2@106
Udder	9-9

CED	BW	WW	YW	MWW	Milk	Marb	REA	Doc	Stay
+15.1	-1.2	+68	+103	+58	+24	+2	+76	+19	+17

- This is a second generation Enhancer with very good numbers and even a better phenotype.
- Wendy is a moderated framed female with great length, tremendous thickness, excellent volume, and a beautiful top line along with a wonderful personality.
- This heifer doesn't appear to have any holes no matter what you want to do with her.
- Her full brother sold in last year's sale to Keith Meckling.
- The dam is a very deep bodied, excellent uddered young female.
- The dam's sire, Hook's Full Figures, has produced some great young cows and we have gone back to using him in our Enhancer AI program.
- Wendy's sire, PRK GPS, is a moderate framed, very muscular and thick topped sire out of a gold dam who we flushed this Spring and we have used him for 5 years.

Dam to Lot 83

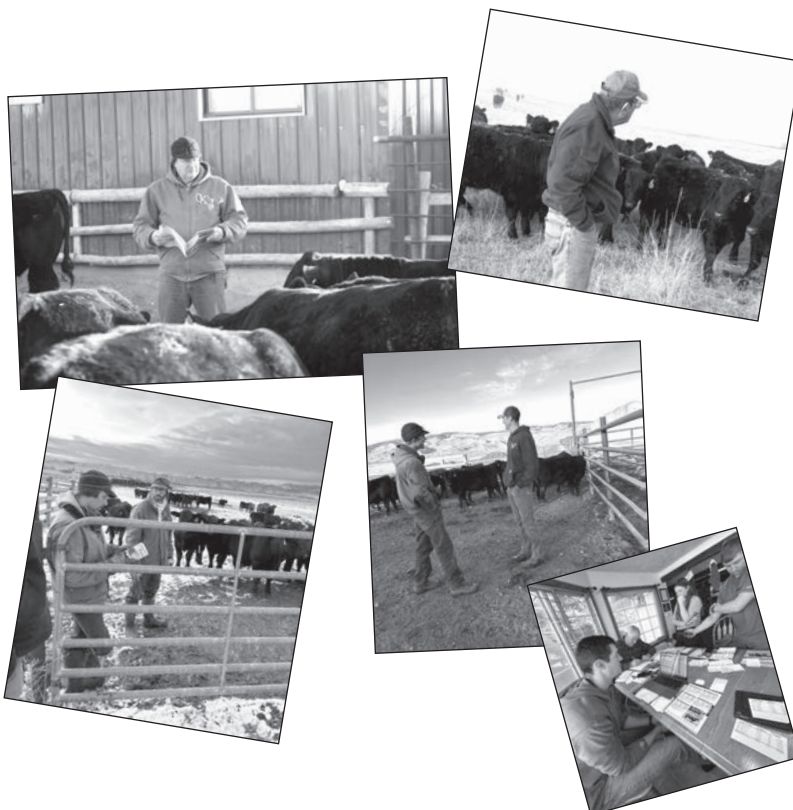


PRK Jasmine 574C • August 2016

Dam & Full Brother to Lot 83



PRK Hickory 574H • August 2020





Dam & Maternal Brother to Lot 85



PRK Haymaker 480H • September 2020

P 85 PRK MALIBU 4198M \$3,000

Heifer	Black	Quad Polled	3/8 AN 3/8 SM 1/4 SA	reg: P763764
Born	BW	205 Wt	Index	11/6 Wt
3/2/2024	79	642	99	766

GW SPARKY 369E
GW JAILBREAK 555J
 GW MISS GPRD 038W

SRS SPARTACUS 0670Z
PRK ROSEBUD 480B
 *PRK ROSEBUD 280Z

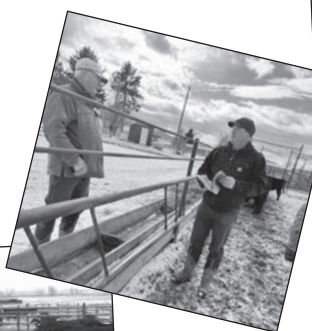
GW MOVIN ON 183C
 GW MISS CONQUEST 538C
 GW PREDESTINED 701T
 GW MISS LUCKY ONE 736R

SRS XTRA 0347X
 SRS SEIKO 0670S
 SRS XPRT 0881X
 PRK ROSEBUD 070X

Dam's Production	
BW	9@88
WW	9@104
Udder	7-8

CED	BW	WW	YW	MWW	Milk	Marb	REA	Doc	Stay
+15.9	-1.7	+72	+109	+63	+28	+2	+4.8	+15	+20

- Malibu is an Enhancer heifer who possesses loads of style and eye appeal coupled with generations of cow power.
- Another heifer with great EPD's and lots of maternal potential.
- Her dam is from the great Rosebud cow family and her grand dam is a gold dam that is still producing top end calves at 13 years of age (son sells as lot #6).
- Dam is a great looking, long, and balanced female who milks great and has a wonderful personality and sired by the great female producer, SRS Spartacus.
- Malibu's sire, GW Jailbreak, is a Simm/Angus sire we used AI because of his phenotype, balanced numbers, and terrific dam.
- His first offspring at our place are deep sided, fast growing, and have excellent dispositions.



Thank You
 for your
 continued support!



Industry Future

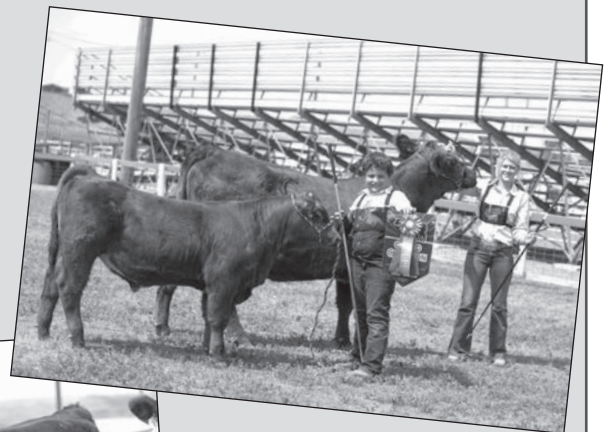
Parke Ranch is a multi-generational family operation that has great faith in and desire to support the upcoming generation and the future of Agriculture. We believe two of the great programs to assist in ensuring the bright future of our youth and industry are 4-H and FFA. The 4th generation of our family will be starting 4-H in a few years. 2024 was the first time in the last 20 years that there wasn't a Parke exhibiting our cattle at the Tri-County Fair in Deer Lodge. We continue to be heavily involved as we feel the value, lessons, and opportunities of this program are unmatched. Eaf has been a fair board member for 20+ years, Tiffany has been a club leader for many years, and each August our family spends the fair week working and enjoying the activities and associations of the fair. We are also an active participant in the annual livestock auction. This year we are also excited to donate a pick of our heifer calves for the Rocky Mountain Stockgrowers Association to award to a local youth to incorporate into their breeding project.

We wanted to recognize the efforts and successes of a few 4-H youth who exhibited cattle with Parke genetics this past summer.

Lexi Nelson of Hall, Montana purchased an Enhancer heifer calf in our 2023 production sale. She exhibited PRK Montana at the Tri-County Fair in Deer Lodge, Mt in mid-August. She was part of the bred heifer Market Replacement Heifer show. She received a purple ribbon along with being named Grand Champion and was awarded the Champion Locally Grown and Ranch Raised Replacement Heifer awards! Congratulations Lexi on a very successful year and tremendous 4-H career! In 2023 she received the Progeny of Dam award with her 8-year-old cow "Ruby" and her 5 offspring. Lexi purchased Ruby from us in 2015 as a heifer calf.

Will and Charlie Hebel of Circle, MT had a banner-winning year at the McCone County Fair in 2024. It was Charlie's first year with a market steer and he showed an Optimizer x Red Angus steer. He was selected as the Reserve Champion Junior Beef Showman with his gentle steer. He also exhibited his 2-year-old Female and bull calf, which were awarded the Overall Grand Champion Breeding project just edging out his brother. Will had a 2-year-old Optimizer female with a great-looking heifer calf at side. Both of these calves as well as Charlie's steer were sired by PRK Juneau 951J, who their grandfather (Dan Undem) purchased in our 2021 Production Sale. Juneau's maternal brother is lot #56 in this year's sale.

Tierrah Rigby of Drummond also exhibited in the Tri-County Fair. One of her market steers was an Enhancer cross steer who was sired by PRK Jumbo 899J. Jumbo is a red Enhancer who was purchased as the high-selling bull in our 2021 sale by the Mentzer Ranch (Tierrah's grandparents). Her steer placed 3rd in the non-club influenced class and went on to receive carcass Steer of Merit when harvested. Jumbo has also sired several steers that have gone to other 4-H youth in western Montana. A black full brother to Jumbo sells in this year's sale as lot #68.



Parke Ranch Bred Heifers

These bred heifers were born, developed, and bred here at Parke Ranch. They were weaned last Fall on September 29th and ran on meadow regrowth for 45 days. They were developed through the winter on long-stem grass/alfalfa hay. They have not received any concentrates or supplements other than minerals. These heifers sell as commercial heifers even though many of them are registered females and siblings to bulls selling in this and past sales. They are bred to calving ease sires we use in our herd for both AI and clean-up bulls. You can find most of their service sires listed following the heifer lots or in the Reference Sire section before the bull lots. They were ultra-sounded for calving dates on August 22nd. We have sorted the heifers into smaller groups by calving dates, breed, and phenotype. They will sell in the silent auction along with the bulls. The heifer groups have base prices listed with each group on a per-head basis. The bidding will proceed with \$25 per head bid increases until the close of the sale at 2 pm on Dec. 14th, in the same format as the bulls. We would ask that you make arrangements to pick up your heifers by the end of the year. A video of the heifer lots will be available on our website, or you may come at any time to view the heifers.

P Group A - Bred Heifers

\$3,000

Number	Sire	Color	% Salers	Bred To	Due Date	Calf %	Average WT
027Y	Dundee/Jupiter	Black	3/4	PRK Kenworth	2/23	5/8	10/23/24
057G	SRS General	Black	5/8	PRK Flint	2/17	5/8	1123 lbs
125Y	MAC Homestead	Black	PB	PRK Laser	2/16	3/4	
506G	MJB Headliner	Black	PB	PRK Flint	2/17	3/4	
877Y	PRK Flint	Black	1/2	PRK Jury	2/17	1/2	

P Group B - Bred Heifers

\$3,000

Number	Sire	Color	% Salers	Bred To	Due Date	Calf %	Average WT
0114Y	SRS Guideline	Black	1/2	PRK Kenworth	2/8	1/2	10/23/24
560G	MAC Enduro	Black	1/2	PRK Laser	2/10	1/2	1172 lbs
778G	MAC Enduro	Black	1/2	PRK Flint	2/10	1/2	
793Y	SRS Judge	Black	1/2	PRK Flint	2/10	1/2	
985Y	MAC Enduro	Black	1/2	PRK Flint	2/9	1/2	

P Group C - Bred Heifers

\$2,950

Number	Sire	Color	% Salers	Bred To	Due Date	Calf %	Average WT
0154G	PRK Fullback	Black	1/2	PRK Monument	2/10	5/8	10/23/24
142Y	SRS Guideline	Black	1/2	PRK Kenworth	2/22	1/2	1080 lbs
156Y	PRK Flint	Black	1/2	PRK Monument	2/10	5/8	
1908Y	SRS Judge	Black	1/2	MJB Patriot	2/9	5/8	
466G	PRK Jacuzzi	Black	1/2	PRK Flint	2/17	1/2	

Group D - Bred Heifers

\$3,000

Number	Sire	Color	% Salers	Bred To	Due Date	Calf %	Average WT
0137G	Dundee/Jupiter	Black	1/2	PRK Jury	2/23	1/2	10/23/24
0464G	Dundee/Jupiter	Black	1/2	PRK Kenworth	2/23	1/2	1155 lbs
1990G	SRS Forward	Black	1/2	PRK Kenworth	2/16	1/2	
331G	SRS Forward	Black	5/8	PRK Kenworth	2/17	5/8	
445G	Dundee/Jupiter	Black	1/2	PRK Flint	2/16	1/2	

Group E - Bred Heifers

\$3,000

Number	Sire	Color	% Salers	Bred To	Due Date	Calf %	Average WT
016Y	PRK GPS	Black	Enhancer	PRK Flint	2/16	Enhancer	10/23/24
081G	PRK Hercules	Black	Enhancer	PRK Lookout	2/12	Enhancer	1088 lbs
0192Y	PRK GPS	Black	Enhancer	PRK Kenworth	2/16	Enhancer	
287G	Hook's Galileo	Black	Enhancer	PRK Hercules	2/8	Enhancer	
2180G	PRK Flint	Black	Enhancer	PRK Monument	2/9	Enhancer	

Group F - Bred Heifers

\$2,950

Number	Sire	Color	% Salers	Bred To	Due Date	Calf %	Average WT
064Y	PRK Jacuzzi	Red	5/8	MAC Judson	2/16	5/8	10/23/24
0184Y	PRK Game Time	Red	1/2	PRK Monument	2/10	5/8	1160 lbs
12Y	MAC Judson	Red	3/4	PRK Kenworth	2/9	5/8	
180Y	MAC Judson	Red	1/2	PRK Kenworth	3/5	1/2	

Group G - Bred Heifers

\$2,950

Number	Sire	Color	% Salers	Bred To	Due Date	Calf %	Average WT
0102Y	SRS Judge	Black	1/2	PRK Laser	3/5	1/2	10/23/24
600G	SRS Forward	Black	3/4	PRK Jury	3/8	5/8	1217 lbs
789G	SRS Guideline	Black	1/2	PRK Laser	3/2	1/2	
854G	SRS Judge	Black	1/2	PRK Laser	3/2	1/2	
998Y	SRS Judge	Black	1/2	PRK Laser	3/5	1/2	

Group H - Bred Heifers

\$2,900

Number	Sire	Color	% Salers	Bred To	Due Date	Calf %	Average WT
023G	MJB Headliner	Black	PB	PRK Kenworth	3/12	3/4	10/23/24
0168G	Dundee/Jupiter	Black	1/2	PRK Kenworth	3/2	1/2	1093 lbs
192Y	PRK Jury	Black	1/2	PRK Kenworth	3/12	1/2	
666G	PRK Jacuzzi	Black	1/2	PRK Kenworth	3/17	1/2	
959G	PRK Jury	Black	1/2	PRK Kenworth	3/8	1/2	

Group I - Bred Heifers

\$2,900

Number	Sire	Color	% Salers	Bred To	Due Date	Calf %	Average WT
1715Y	SRS General	Black	1/2	PRK Jury	3/23	1/2	10/23/24
1917G	SRS General	Black	1/2	PRK Jury	3/31	1/2	1125 lbs
1974G	SRS Forward	Black	1/2	PRK Jury	3/19	1/2	
308G	MJB Headliner	Black	PB	PRK Laser	3/16	3/4	
504Y	MAC Homestead	Black	PB	PRK Laser	3/24	3/4	

Group J - Bred Heifers

\$2,850

Number	Sire	Color	% Salers	Bred To	Due Date	Calf %	Average WT
088G	SRS Judge	Black	5/8	PRK Kenworth	4/13	5/8	10/23/24
0104Y	PRK GPS	Black	Enhancer	PRK Flint	4/26	Enhancer	1170 lbs
117Y	MAC Judson	Black	5/8	PRK Flint	4/4	5/8	
440G	CLRS Herdbook	Black	Enhancer	PRK Laser	4/4	Enhancer	
624G	PRK GPS	Black	Enhancer	PRK Flint	4/11	Enhancer	
999G	SRS Judge	Black	1/2	PRK Flint	4/14	1/2	

Group K - Bred Heifers

\$2,800

Number	Sire	Color	% Salers	Bred To	Due Date	Calf %	Average WT
097G	PRK Duracell	Black	5/8	PRK Jury	4/15	5/8	10/23/24
0117G	SRS Hoosier	Black	1/2	PRK Kenworth	4/6	1/2	1075 lbs
167G	PRK Jacuzzi	Black	1/2	PRK Kenworth	4/28	1/2	
252Y	SRS Judge	Black	1/2	PRK Kenworth	4/22	1/2	
653G	SRS Hoosier	Black	5/8	PRK Jury	4/13	5/8	
799G	JSR Chemistry	Black	7/8	PRK Laser	4/12	3/4	

Group L - Bred Heifers

\$2,800

Number	Sire	Color	% Salers	Bred To	Due Date	Calf %	Average WT
394Y	MAC Judson	Red	1/2	PRK Jury	4/8	1/2	10/23/24
428G	PRK Jacuzzi	Red	5/8	PRK Kenworth	4/12	5/8	1204 lbs



PRK LASER 161L



Black		Polled		1/2 SA 1/2 AN		reg: 756515				
CED	BW	WW	YW	MWW	Milk	Marb	REA	Doc	Stay	
+19.9	-4.2	+57	+92	+46	+18	+0.0	+0.00	+20	+18	

PRK MONUMENT 2155L



Black		Hom Polled		5/8 SA 3/8 AN		reg: 756608				
CED	BW	WW	YW	MWW	Milk	Marb	REA	Doc	Stay	
+14.4	-2.5	+50	+77	+40	+15	+0.3	+0.51	+10	+17	

PRK JURY 976J



Black		Polled		1/2 SA 1/2 AN		reg: 744423				
CED	BW	WW	YW	MWW	Milk	Marb	REA	Doc	Stay	
+23.2	-6.9	+46	+62	+44	+22	+0.2	+0.29	+14	+19	

PRK KENWORTH 794K



Black		Polled		1/2 SA 1/2 AN		reg: 751171				
CED	BW	WW	YW	MWW	Milk	Marb	REA	Doc	Stay	
+15.7	-2.2	+58	+90	+51	+22	+0.4	+0.28	+10	+18	

LKL LINCOLN 891L

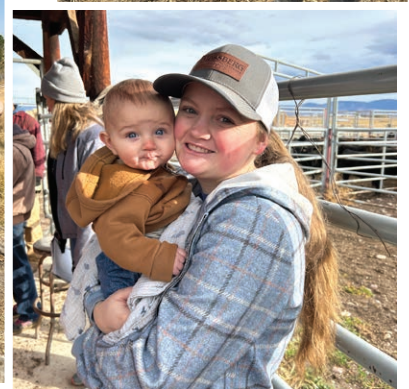
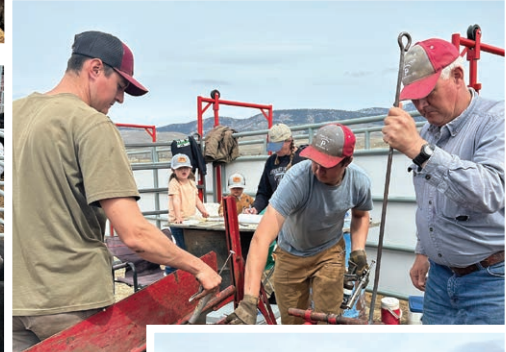
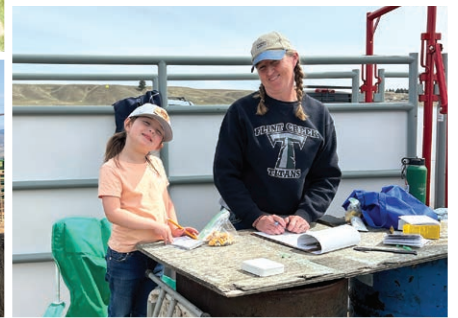


Red		Hom Polled		5/8 SA 1/4 AN 1/8 AR		reg: 756800				
CED	BW	WW	YW	MWW	Milk	Marb	REA	Doc	Stay	
+10.4	+0.5	+76	+118	+58	+20	+0.1	+0.51	+14	+16	

ECR LIBERTY 413L



Black		Polled		3/4 SA 1/4 AN		reg: 757350				
CED	BW	WW	YW	MWW	Milk	Marb	REA	Doc	Stay	
+10.4	+0.2	+81	+123	+58	+18	+0.1	+0.68	+13	+13	



We Believe In . . . Will Represent Honestly . . . And Stand Behind Our Cattle!

Parke Ranch

2024 Maternal Power Production Sale

SILENT AUCTION FORMAT

December 9th thru 14th, 2024

At the Ranch – Drummond, Montana



Parke Ranch
Eaf & Tiffany Parke Family
7 Peppergrass Lane
Drummond, MT 59832

FIRST CLASS

US Postage
Paid
Ballyhoo Printing
59457

FIRST CLASS